

PRIVILEGIO — RIVA



Builder: [RIVA](#)

Year Built: 2010

Model: Motor Yacht

Price: PRICE ON APPLICATION

Location: United States

LOA: 92' 0" (28.04m)

Beam: 23' 3" (7.09m)

Max Draft: 6' 7" (2.01m)

Cruise Speed: 28 Kts. (32 MPH)

Max Speed: 34 Kts. (39 MPH)

Our experienced yacht broker, Andrey Shestakov, will help you choose and buy a yacht that best suits your needs **PRIVILEGIO — RIVA** from our catalogue. Presently, at Shestakov Yacht Sales Inc., we have a wide variety of yachts available on our sale's list. We also work in close contact with all the big yacht manufacturers from all over the world.

If you would like to buy a yacht **PRIVILEGIO — RIVA** or would like help answering any questions concerning purchasing, selling or chartering a yacht, please call **+1(954)274-4435**

TABLE OF CONTENTS

TABLE OF CONTENTS	2
SPECIFICATIONS	4
Overview	4
Basic Information	4
Dimensions	4
Speed, Capacities and Weight	4
Accommodations	4
Hull and Deck Information	5
Engine Information	5
DETAILED INFORMATION	6
Remarks	6
Walkthrough	6
Main Salon	6
Galley and Laundry	7
Master Stateroom	7
VIP Stateroom Forward	7
Guest Stateroom Port and Starboard	7
Pilothouse	8
Aft Deck	8
Flybridge	8
Navigation Systems	8
Deck Equipment	8
Lazarette / Beach Platform	8
Machinery	9
Crew Quarters	9
Exclusions	9
Disclaimer	9
PHOTOS	10

Layout	13
Layout	14
CONTACTS	15
Contact details	15
Telephones	15
Office hours	15
Address	15

SPECIFICATIONS

Overview

This yacht is the uncontested, finest example of a 92' Riva Duchessa available on the market today. The owner is a textbook yacht owner who has cared for this yacht since purchase. She is kept in a boathouse out of the sun and harsh UV rays and she shows flawlessly.

Basic Information

Category: Motor Yacht

Sub Category: Flybridge

Model Year: 2010

Year Built: 2010

Country: United States

Fly Bridge: Yes

Dimensions

LOA: 92' 0" (28.04m)

Beam: 23' 3" (7.09m)

Max Draft: 6' 7" (2.01m)

Speed, Capacities and Weight

Cruise Speed: 28 Kts. (32 MPH)

Max Speed: 34 Kts. (39 MPH)

Water Capacity: 350 Gallons

Fuel Capacity: 2377 Gallons

Accommodations

Total Cabins: 4

Total Heads: 7

Hull and Deck Information

Hull Material: Composite

Deck Material: Teak

Hull Configuration: Planing

Engine Information

Engines: 2

Manufacturer: MTU

Model: 16V2000M93

Engine Type: Inboard

Fuel Type: Diesel

DETAILED INFORMATION

Remarks

This yacht is the uncontested, finest example of a 92' Riva Duchessa available on the market today. The owner is a textbook yacht owner who has cared for this yacht since purchase. She is kept in a boathouse out of the sun and harsh UV rays and she shows flawlessly.

Walkthrough

Boarding aft, guests are welcomed to a large aft deck which features a custom table with forward facing seating and chairs for eight of your closest guests. The full teak walk-around decks are in perfect condition and lead to the plush bow seating area.

Forward from the aft deck to expansive glass entry, guests enter the main salon which features white painted wood floors accented by cherry paneled walls. To starboard is family style seating with one large sofa and two love seats boasting gorgeous views from the light soaking windows.

Continuing forward, guests enter the formal dining area accommodating eight at the large dining table. Forward port of the main salon and dining areas, guests will find stairs to the intimate lower deck boasting 4 staterooms. The day head is located port of the stairs.

The lower deck sleeping arrangements feature a queen VIP forward, two twin staterooms midship, and the full beam master located aft. Each stateroom feature en-suite head and shower.

The master is complimented with a split his and hers conjoined by an expansive walk in shower. Up a level and forward of the main salon and dining, guests will arrive to the pilothouse.

The pilothouse includes two separate seating areas with a table. Starboard of the pilothouse, stairs lead to the flybridge.

Forward of the pilothouse is the fully equipped galley including wine cooler, electric cook top, oven, and side by side refrigerator.

Port side off the galley is the captain's cabin with en-suite head and shower. Forward of the galley are two twin bunk crew cabins with shared head and shower.

Main Salon

The salon area is fitted with a light colored wood floor throughout accompanied with cherry wood walls. Eight large windows invite natural light to enter both spaces. U-shaped seating and leather coffee table oppose the Sony HDTV on electric lift. The formal dining table can accommodate eight guests. (8) Large windows Sony TV on electric lift Bose surround sound Leather coffee table with storage AN locker with Sony BluRay DVD, Bose Surround Sound, Kalidescape

System Cabinetry port and starboard Vitrifrigo refrigerator is located port side aft New LED lights Electric shades Electric aft salon shades Wood white floor 3 sets of leather sofas Forward to salon is a day head, custom white marble floor, window with blind

Galley and Laundry

Located forward of pilothouse, the galley offers crew access from the main deck. The galley is well fitted for gourmet food preparation. Wood floor Corian countertop Miele 6 burner cooktop Miele oven Miele dishwasher Broan Elite trash compactor Gaggenau side by side refrigerator/freezer Whynter wine cooler General Electric microwave Miele side by side washer/dryer New LED lights New Wynter wine cooler

Master Stateroom

Offers a well appointed full-beam master with island berth on the lower deck. Nightstands are located port and starboard, both with built in cabinets. A full walk in closet is located starboard in the companionway. A desk/vanity is located port side with six drawers and leather chair. A settee is positioned starboard side under a large bay window allowing for natural lighting in the master. The his and hers split master head is shown with marble top counters with two bowl sinks, shower stall, large bath, and with head/bidet. Island berth Walk-in closet with drawers, hanging bar, and safe Built in desk with chair and six drawers Sony TV New LED lights Sony TV Carpet floor Leather sofa to starboard side Big ocean view port hole port and starboard side Master Head Marble counters with double sinks Split His & Hers conjoined by central shower Built in rain shower Window with blinds New over-head lights Large mirror

VIP Stateroom Forward

The VIP stateroom is located on lower forward. The VIP is fitted with queen size berths and bath with walk in shower and head/bidet. Queen size berth with custom leather headboard & large mirror Berth base with storage drawers Storage located port and starboard Nightstands, port and starboard New Sony TV New LED lights New TV LG Carpet floor Large ocean view porthole port and starboard side White custom leather wall covers VIP Head Separate head/bidet Walk in shower Mounted sink with faucet Marble white floor Window with blind

Guest Stateroom Port and Starboard

Two twin berths are located port and starboard midship. Each stateroom has en-suite shower and head. Single berth inboard and outboard Step access to forward head (3) Storage cabinets above berths Wardrobe with interior light New LED lights New LG TV Port and Starboard Heads Head/bidet Mounted sink with mirror back splash Enclosed shower New LED lights New LG TV

Pilothouse

The pilothouse can be accessed from the main companionway. The pilothouse is equipped with the latest electronics including New Garmin electronic, bow & stern thruster controls. There are two seating areas in the pilothouse, including one large table for guests to enjoy the wonderful views. (2) New Garmin New Garmin Auto pilot New Garmin transducer New Icon VHF Iridium Sat Phone Lighted alarm panel to bilge pumps, high water alarms, pumps, etc. KVH Trac Vision ABT Stern and Bow thruster controls ABT Trac stabilizers Nav Net computer system Fire Control system U-shaped upholstered seating Wood table New overhead LED lights

Aft Deck

Accessed via teak staircase port or starboard side from the swim platform offering easy access to the water. The passerelle is located starboard aft allowing for stern to dockage. The custom table allows up to 8 guests to enjoy the open air while dining. Full teak walk around decks with access to seating in the bow and large sun pad. There is a remote control station located on the port side aft. Teak decks Access to swim platform and beach club Custom table with upholstered forward facing seating and 4 chairs Full teak cap rails Access to upper deck via ten teak stairs New overhead LED lights New JL audio speakers Raritan Ice maker Video camera

Flybridge

The Flybridge is accessed via stairs located on the aft deck, or through an interior set of stairs by the pilothouse. This area is wonderful for entertaining and enjoying the sunshine on the large sun pads. The flybridge is equipped with a Miele electric cooktop, BBQ, refrigerator and icemaker. A davit is aft deck. Miele electric cooktop Miele BBQ Refrigerator and Icemaker Sunning pads Besenzoni davit New over head LED lights

Navigation Systems

SAT Receiver: Trac Vision HD7 SAT Phone: Iridium 9555 New garmin New yacht controller New VHF New Garmin autopilot New Garmin sounder transducer

Deck Equipment

Anchor Windlass: Lofrans Boat Crane and Davits: Besenzoni modification and inside baskets remote control Passerelle: Besenzoni

Lazarette / Beach Platform

Features a hydraulically actuated aft transom door with teak overlay. When this door is lowered it

converts into the beach access.

Machinery

Engine Type: (2) MTU 16V 2000 M93 2435HP Engine Hours: 1956 & 185 Gearboxes for Main Engines: ZF Drive: V Drive Speed Consumption per hours/Range RPM (2) Twin Kohler Generator 27 KW Hours: Port: 3441 Starboard: 3756 Shore Power: 1x 100AMP 3 Phase Atlas converter Air Conditioning 2x Condaria Systems: (4) chillers aft (2) chillers forward Water makers: Idromar MC3J water maker fully serviced Trim Tabs/Stabilizers: ABT Trac Fins American Bow Thruster (Bow and Stern) Steering System: BCS Fuel Separator & Filtration: Racor filter Sewage System: Hamann Serviced January 2018: engines, generators, transmissions, new batteries (all), fire extinguisher system, bottom paint.

Crew Quarters

The crew quarters are located forward of the galley. A captain's cabin is located port side with a full berth and en-suite head & shower. Two forward cabins each have upper/lower berths. The forward cabins share a central head & shower. Upper and lower single berth with storage pocket and reading light Hanging locker with dressing mirror Miele side by side washer/dryer is located aft of crew area New LED lights New TV

Exclusions

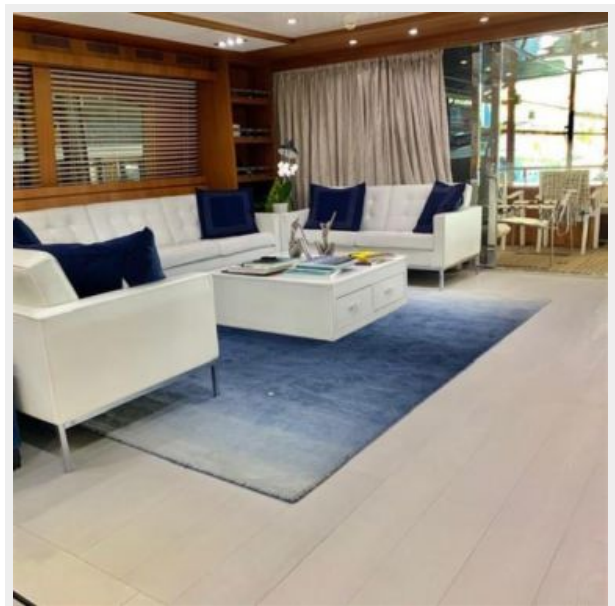
Owner's personal belongings.

Disclaimer

The Company offers the details of this vessel or yacht in good faith but cannot guarantee or warrant the accuracy of this information nor warrant the condition of the vessel. A buyer should instruct his representatives, agents, or his surveyors, to investigate such details as the buyer desires validated. This vessel or yacht is offered subject to prior sale, price change, or withdrawal without notice.

PHOTOS









Layout



Layout



CONTACTS

Andrey Shestakov, leading yacht broker of the sales department of Shestakov Yacht Sales Inc. Shestakov Yacht Sales Inc., the official representative of the Miami/Fort Lauderdale FL headquarters.

Contact details

Email: andrey@shestakovyachtsales.com

Web: shestakovyachtsales.com/en/

Telephones

USA: +1(954)274-4435

Office hours

Monday – Saturday: **9:00 - 21:00** EDT

Sunday: **closed**

Address



Harbour Towne Marina, 850 NE 3rd St,
STE 213, Dania, FL 33004