

JASMINE — ACICO YACHTS



Builder: [Acico Yachts](#)

Year Built: 2011

Model: Motor Yacht

Price: PRICE ON APPLICATION

Location: Italy

LOA: 74' 10" (22.80m)

Beam: 20' 5" (6.20m)

Max Draft: 5' 11" (1.80m)

Cruise Speed: 15 Kts. (17 MPH)

Max Speed: 20 Kts. (23 MPH)

Our experienced yacht broker, Andrey Shestakov, will help you choose and buy a yacht that best suits your needs **JASMINE — Acico Yachts** from our catalogue. Presently, at Shestakov Yacht Sales Inc., we have a wide variety of yachts available on our sale's list. We also work in close contact with all the big yacht manufacturers from all over the world.

If you would like to buy a yacht **JASMINE — Acico Yachts** or would like help answering any questions concerning purchasing, selling or chartering a yacht, please call **+1(954)274-4435**

TABLE OF CONTENTS

TABLE OF CONTENTS	2
SPECIFICATIONS	3
Overview	3
Basic Information	3
Dimensions	3
Speed, Capacities and Weight	4
Accommodations	4
Hull and Deck Information	4
Engine Information	4
DETAILED INFORMATION	5
Yacht Introduction	5
Main Features	5
Machinery	6
Galley & Laundry Equipment	6
Communication, Navigation & Entertainment Equipment	7
Tender & Toys	7
Deck Equipment	8
Safety & Security Equipment	8
Exclusions	8
Disclaimer	8
PHOTOS	9
Jasmine-15	9
CONTACTS	12
Contact details	12
Telephones	12
Office hours	12
Address	12

SPECIFICATIONS

Overview

Jasmine is a 22.8m motor yacht with an extremely unique aesthetic to her exterior. Jasmine's retro design and sweeping superstructure houses a minimalist interior that encapsulates the latest in modern technology. Built by Acico Yachts and delivered in 2011, Jasmine is presented for sale by her original owner in immaculate condition with low engine hours. Jasmine offers a new owner a low maintenance aluminum hull, enhanced comfort thanks to zero speed stabilisers, and an impressively long range at an economic fuel consumption. Jasmine's interior is naturally well lit, functional yet luxurious, and she has three extremely comfortable cabins in which up to six guests can be accommodated. There is a master suite with a double bed, a VIP double and a guest twin. There are also quarters for two crew and Jasmine operates beautifully as a family yacht on that basis. Interior finishes include wooden floors, built-in cabinetry and fabric-clad bulwarks and ceilings. Jasmine has a cosy aft deck that's suitable for dining, but much more space for sun lounging and socialising is found forwards where there are cushioned sun pads and room for additional furniture. Special attention was given to soundproofing during Jasmine's build and the vessel is capable of near silent operation underway. Jasmine has a top speed of 20 knots and a cruising speed of 15 knots. Jasmine has a tender garage at her stern for 3.3m tender. This yacht was designed for large range cruising in coastal and inland waters. The open arrangement between the lower and upper deck generates a transparent and spacious feeling, allowing for good communication between the areas. The aft deck features sleek storage with an integrated wash place and a freely furnished open area. The flybridge offers a large sundeck and a three seat driving set-up. She has accommodation for 6 guests in 3 staterooms.

Basic Information

Category: Motor Yacht

Model Year: 2011

Year Built: 2011

Country: Italy

Dimensions

LOA: 74' 10" (22.80m)

Beam: 20' 5" (6.20m)

Max Draft: 5' 11" (1.80m)

Speed, Capacities and Weight

Cruise Speed: 15 Kts. (17 MPH)

Cruise Speed Range: 17

Max Speed: 20 Kts. (23 MPH)

Max Speed Range: 23 Kts.

Displacement: 110231.131 Pounds

Gross Tonnage: 50 Pounds

Water Capacity: 528.344104 Gallons

Holding Tank: 412.10840112 Gallons

Fuel Capacity: 2232.2538394 Gallons

Accommodations

Total Cabins: 3

Sleeps: 6

Total Heads: 3

Crew Cabin: 1

Crew Sleeps: 2

Crew Heads: 1

Hull and Deck Information

Hull Material: Aluminum

Deck Material: Teak

Exterior Designer: ABD Architects

Interior Designer: Olivier F. van Meer
Design

Engine Information

Engines: 2

Manufacturer: Volvo Penta

Model: D-13

Engine Type: Inboard

Fuel Type: Diesel

DETAILED INFORMATION

Yacht Introduction

Jasmine is a 22.8m motor yacht with an extremely unique aesthetic to her exterior. Jasmine's retro design and sweeping superstructure houses a minimalist interior that encapsulates the latest in modern technology.

Built by Acico Yachts and delivered in 2011, Jasmine is presented for sale by her original owner in immaculate condition with low engine hours. Jasmine offers a new owner a low maintenance aluminium hull, enhanced comfort thanks to zero speed stabilisers, and an impressively long range at an economic fuel consumption.

Jasmine's interior is naturally well lit, functional yet luxurious, and she has three extremely comfortable cabins in which up to six guests can be accommodated. There is a master suite with a double bed, a VIP double and a guest twin. There are also quarters for two crew and Jasmine operates beautifully as a family yacht on that basis. Interior finishes include wooden floors, built-in cabinetry and fabric-clad bulwarks and ceilings.

Jasmine has a cosy aft deck that's suitable for dining, but much more space for sun lounging and socialising is found forwards where there are cushioned sun pads and room for additional furniture.

Special attention was given to soundproofing during Jasmine's build and the vessel is capable of near silent operation underway. Jasmine has a top speed of 20 knots and a cruising speed of 15 knots.

Jasmine has a tender garage at her stern for 3.3m tender.

This yacht was designed for large range cruising in coastal and inland waters. The open arrangement between the lower and upper deck generates a transparent and spacious feeling, allowing for good communication between the areas. The aft deck features sleek storage with an integrated wash place and a freely furnished open area. The flybridge offers a large sundeck and a three seat driving set-up. She has accommodation for 6 guests in 3 staterooms.

Main Features

- Najad zero speed stabilizers
- Dutch build pedigree
- Long range
- Low fuel consumption
- Tender garage

Machinery

Machinery

Stabilizers: Navigation/ Zero speed

Generators: Northern Light 20kw 3900 hrs

2nd Gen Fischer panda 345hr

Electricity

Voltage: 24 Volt

Power converter: Masgtervolt

Inverter: Victron Energy

Shore power: 64 AMP

Battery Charger: Mastervolt (Service Engine, Genset 1 & 2 Batteries in 2015)

Air Conditioning: Webasto

Other Machinery: Syde Power (Hydraulic)

Trimtabs: Bennet 24 Volt

Heating: Inverse Compressor Airco System

Fuel filter: Racor

Steering system and engine controls:2

Sanitary system: TECMA

Galley & Laundry Equipment

Galley

- Oven: Miele
- Refrigerators: 4 x Frigomar

- Microwaves: Miele
- Freezer: 1 x Frigomar
- Burners: Miele
- Dishwasher: Miele
- Icemakers: Oshizaki

Laundry

- Washing Machines: Miele
- Dryers: Miele

Communication, Navigation & Entertainment Equipment

Communications Equipment

- Inmarsat: Mini-C
- Printer: HP/Computer: Mac
- 2 x fixed VHF Simrad rs87
- Handheld VHF

Navigation Equipment

- Autopilot: 2 x Simrad AP 28
- Plotter: 2 x Furuno Navnet 3D (1 Flybridge/1 Wheelhouse)
- Wind instruments: Furuno
- Compasses
- Radar: Furuno
- Rudder indicator
- GPS: Furuno
- Rudder indicator
- Synchroniser
- Depthsounder
- AIS: Transporter Class B
- Log

Entertainment Equipment

- TV: 2 x Samsung
- DVD: Bose System
- Music System: JL Audio, Amplifier Denon, Audio Heos Wifi through all boat

Tender & Toys

2016 William Tenderjet 325 only 10 hrs

Deck Equipment

- Anchor Chain 130 100m
- Windlasses: Sanguineti Chiavari (hidden)
- Capstans: Lewmar (Hydraulic)
- Bathroom Platform fix
- Swimming Ladder: Manual - Big, inox stainless steel
- Passarelle
- Sun Awing: Automatic in the stern + 1 arsbic manual tent on bow
- Winter covers: Fully equipped in Stamoid
- Deck Shower
- Search light & horn

Safety & Security Equipment

- 2 x Liferafts for 12 person
- Engine fire fighting system
- Fire extinguishers
- Bilge pumps
- Alarm system
- E.P.I.R.B.
- Closed circuit T.V.
- Intercom

Exclusions

Owner's personal belongings.

Disclaimer

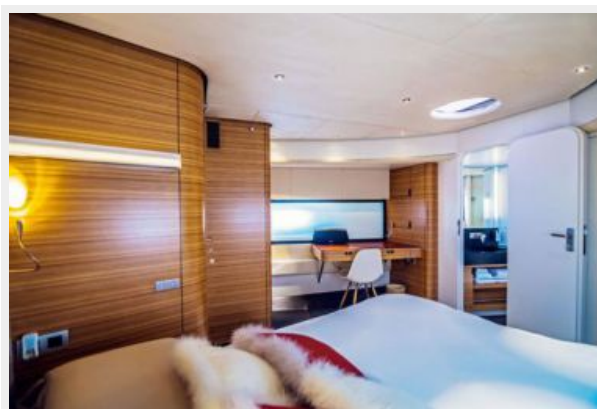
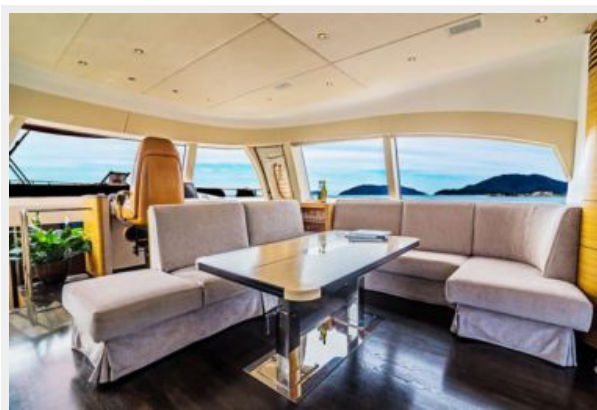
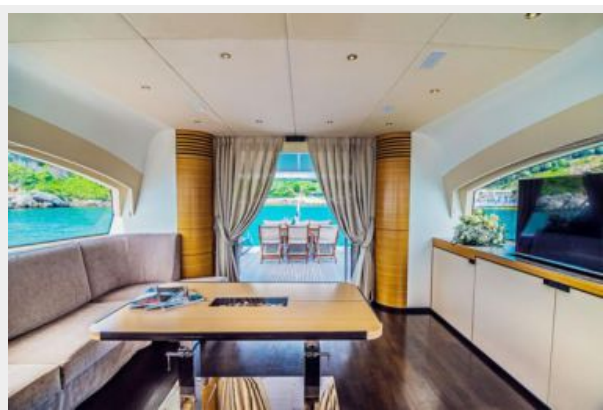
The Company offers the details of this vessel or yacht in good faith but cannot guarantee or warrant the accuracy of this information nor warrant the condition of the vessel. A buyer should instruct his representatives, agents, or his surveyors, to investigate such details as the buyer desires validated. This vessel or yacht is offered subject to prior sale, price change, or withdrawal without notice.

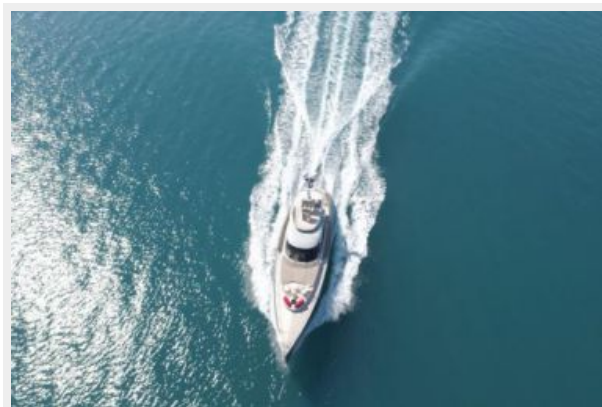
PHOTOS



Jasmine-15







CONTACTS

Andrey Shestakov, leading yacht broker of the sales department of Shestakov Yacht Sales Inc. Shestakov Yacht Sales Inc., the official representative of the Miami/Fort Lauderdale FL headquarters.

Contact details

Email: **andrey@shestakovyachtsales.com**

Web: shestakovyachtsales.com/en/

Telephones

USA: **+1(954)274-4435**

Office hours

Monday – Saturday: **9:00 - 21:00 EDT**

Sunday: **closed**

Address



Harbour Towne Marina, 850 NE 3rd St,
STE 213, Dania, FL 33004