

AZIMUT 100



Year Built: 2014

Model: Motor Yacht

Price: PRICE ON APPLICATION

LOA: 101' 11" (31.04mm)

Beam: 22.9

Max Draft: 67' (20.4mm)

Cruise Speed: 22.5 Knots Kts. (26 MPH)

Max Speed: 26 Knots Kts. (30 MPH)

Our experienced yacht broker, Andrey Shestakov, will help you choose and buy a yacht that best suits your needs **Azimut 100** — n/a from our catalogue. Presently, at Shestakov Yacht Sales Inc., we have a wide variety of yachts available on our sale's list. We also work in close contact with all the big yacht manufacturers from all over the world.

If you would like to buy a yacht **Azimut 100** — n/a or would like help answering any questions concerning purchasing, selling or chartering a yacht, please call **+1(954)274-4435**

TABLE OF CONTENTS

TABLE OF CONTENTS	2
SPECIFICATIONS	4
Overview	4
Basic Information	5
Dimensions	5
Speed, Capacities and Weight	5
Accommodations	5
Hull and Deck Information	5
Engine Information	5
PHOTOS	6
DJI_0444	6
DJI_0448	6
DJI_0451	6
DJI_0454	6
IMG_0527	6
IMG_0530	6
IMG_0531	7
IMG_0533	7
IMG_0535	7
IMG_0630	7
IMG_0603	7
IMG_0604	7
IMG_0602	8
IMG_0539	8
IMG_0541	8
IMG_0543	8
IMG_0545	8
IMG_0547	8

IMG_0598	9
IMG_0554	9
IMG_0593	9
IMG_0563	9
IMG_0570	9
IMG_0579	9
IMG_0584	10
IMG_0605	10
IMG_0609	10
IMG_0611	10
IMG_0624	10
IMG_0639	10
IMG_0645	11
CONTACTS	12
Contact details	12
Telephones	12
Office hours	12
Address	12

SPECIFICATIONS

Overview

AUDIO VISUAL

–Denon 5.1 entertainment system in all guest cabins Samsung tv behind mirror glass–Denon 5.1 receiver saloon Samsung tv on lifter–Crew cabin tv–Crew stereo x 3–Bridge stereo

SAFETY & SECURITY

Safety–2 x 8-man life rafts–2 x EPIRBS

Fire Fighting–FM200 fire system–Extinguishers in machinery and passageways–Fire blanket in galley

Alarms–Smoke/heat detection alarm system in all spaces

Security–Pivoting and zooming camera in engines room + two fixed cameras in the aft flybridge for mooring purposes.–Cameras can be seen through an Ipad using the wifi network of the SAT COM

COMMUNICATION EQUIPMENT

–SAT COM antenna (KVH V7) + wifi access points covering the boat with the Internet SAT signal

NAVIGATION

–Furuno Vx2 navigation system–Open array 4 ft radar–50/200khz sounder–2 x VX2 MFDs

DECK EQUIPMENT

Deck Equipment–2 x Lofrans Ercole vertical windlasses

Ground Tackle–Two Posidonia HHP 105 kg anchors (each) , sold steel and zinc plated .–150 m of 13mm zinc plated chain for each anchor

Winches–2 x Lofrans winches

DOMESTIC EQUIPMENT

Galley–5 x fridges - Climma–2 x freezers – Climma

TENDERS & SPORT EQUIPMENT

Tenders Williams Turbojet tender model 445

Jet Skis Kawasaki STX-15F

Basic Information

Category: Motor Yacht

Model Year: 2014

Year Built: 2014

Dimensions

LOA: 101' 11" (31.04mm)

Beam: 22.9

Max Draft: 67' (20.4mm)

Speed, Capacities and Weight

Cruise Speed: 22.5 Knots Kts. (26 MPH)

Max Speed: 26 Knots Kts. (30 MPH)

Water Capacity: 2000 Gallons

Fuel Capacity: 3830.49 Gal Gallons

Accommodations

Total Cabins: 5

Hull and Deck Information

Hull Material: GRP

Hull Color: white

Engine Information

Engines: 2

Manufacturer: MTU

Engine Type: Inboard

Fuel Type: Diesel

PHOTOS

DJI_0444



DJI_0448



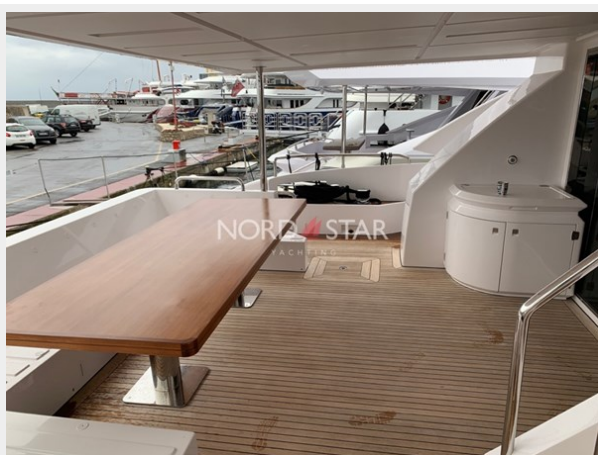
DJI_0451



DJI_0454



IMG_0527



IMG_0530



IMG_0531



IMG_0533



IMG_0535



IMG_0630



IMG_0603



IMG_0604



IMG_0602



IMG_0539



IMG_0541



IMG_0543



IMG_0545



IMG_0547



IMG_0598



IMG_0554



IMG_0593



IMG_0563



IMG_0570



IMG_0579



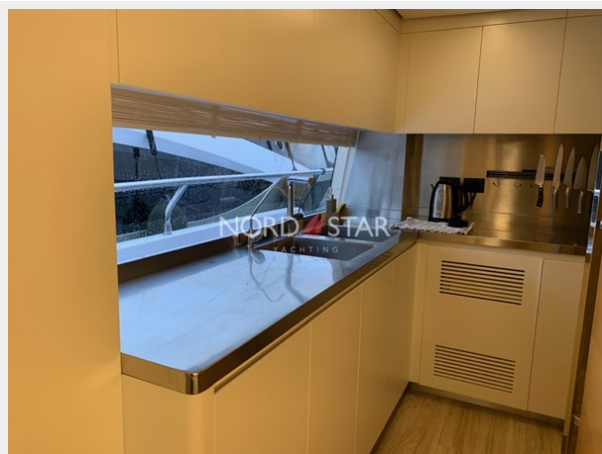
IMG_0584



IMG_0605



IMG_0609



IMG_0611



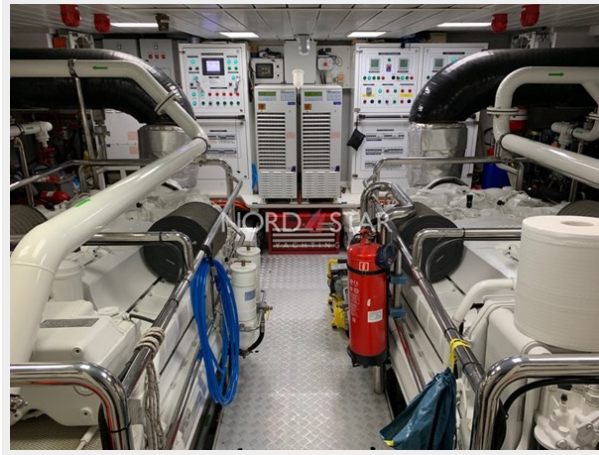
IMG_0624



IMG_0639



IMG_0645



CONTACTS

Andrey Shestakov, leading yacht broker of the sales department of Shestakov Yacht Sales Inc. Shestakov Yacht Sales Inc., the official representative of the Miami/Fort Lauderdale FL headquarters.

Contact details

Email: **andrey@shestakovyachtsales.com**

Web: shestakovyachtsales.com/en/

Telephones

USA: +1(954)274-4435

Office hours

Monday – Saturday: **9:00 - 21:00** EDT

Sunday: **closed**

Address



Harbour Towne Marina, 850 NE 3rd St,
STE 213, Dania, FL 33004