

DARLIN — AZIMUT



Builder: [AZIMUT](#)

Year Built: 2013

Model: Motor Yacht

Price: PRICE ON APPLICATION

Location: United States

LOA: 95' 0" (28.96m)

Beam: 23' 7" (7.19m)

Max Draft: 6' 2" (1.88m)

Our experienced yacht broker, Andrey Shestakov, will help you choose and buy a yacht that best suits your needs **DARLIN — AZIMUT** from our catalogue. Presently, at Shestakov Yacht Sales Inc., we have a wide variety of yachts available on our sale's list. We also work in close contact with all the big yacht manufacturers from all over the world.

If you would like to buy a yacht **DARLIN — AZIMUT** or would like help answering any questions concerning purchasing, selling or chartering a yacht, please call **+1(954)274-4435**

TABLE OF CONTENTS

TABLE OF CONTENTS	2
SPECIFICATIONS	7
Overview	7
Basic Information	7
Dimensions	7
Speed, Capacities and Weight	8
Accommodations	8
Hull and Deck Information	8
Engine Information	8
DETAILED INFORMATION	9
Base and Options	9
Upgrades	10
Main Engines	11
Bow Thruster	11
Transom	11
Cockpit	11
Salon/ Dining Area	12
Galley	12
Wheelhouse	12
Master Cabin	13
Aft Master Head	13
Bow Master Head	14
VIP Cabin	14
VIP Head	14
Guest Cabins	14
Guest Heads	15
Flybridge	15
Bow	16

Exterior Color	16
Exclusions	16
Disclaimer	16
PHOTOS	17
95Az-86 (Large)	17
95Az-89	17
95Az-88	17
95Az-87	17
95Az-93	17
95Az-92	17
95Az-37	18
95Az-36	18
95Az-40	18
95Az-35	18
95Az-39	18
95Az-43	18
95Az-42	19
95Az-44	19
95Az-41	19
95Az-45	19
95Az-46	19
95Az-47	19
95Az-48	20
95Az-58	20
95Az-57	20
95Az-59	20
95Az-56	20
95Az-73	20
95Az-75	21

95Az-72	21
95Az-54	21
95Az-55	21
95Az-53	21
95Az-49	21
95Az-52	22
95Az-51	22
95Az-60	22
95Az-61	22
95Az-62	22
95Az-63	22
95Az-64	23
95Az-65	23
95Az-66	23
95Az-5	23
95Az-6	23
95Az-7	23
95Az-67	24
95Az-1	24
95Az-2	24
95Az-3	24
95Az-4	24
95Az-69	24
95Az-71	25
95Az-8	25
95Az-76	25
95Az-84	25
95Az-77	25
95Az-70	25

95Az-12	26
95Az-13	26
95Az-21	26
95Az-22	26
95Az-23	26
95Az-11	26
95Az-24	27
95Az-20	27
95Az-18	27
95Az-16	27
95Az-19	27
95Az-14	27
95Az-15	28
95Az-25	28
95Az-27	28
95Az-28	28
95Az-29	28
95Az-30	28
95Az-31	29
95Az-33	29
95Az-32	29
95Az-26	29
95Az-78	29
95Az-79	29
95Az-80	30
95Az-81	30
95Az-82	30
95Az-83	30
CONTACTS	31

Contact details	31
Telephones	31
Office hours	31
Address	31

SPECIFICATIONS

Overview

"JUST LISTED" 2013 AZIMUT FLY W/ CAT C32A ENGINES. Great example of a Stefano Righini design which has the styling but also performs well at sea and runs 22 plus knots when needed. She is a 2 owner yacht and the current owners had her interior decor done over with a custom designer. "Darlin" has new look and features 3/4" light oak flooring on the main interior deck, new furniture, Upgraded stone surfaces, headliners and all interior cloth wall materials UPGRADED. New bedding and mattresses through out the cabins as well as new Blinds and decor. Interior carpeting few years old.

All electronics have been replaced with GARMIN units 10/19 (see details in listing), , Water Maker and 2 Zodiac Solas 8 person life rafts.

"Darlin" has been well maintained by the current Captain and his crew since the owners took delivery 1/2015. Cruised the Bahamas and a season in the BVI's. Great option for private use or perfect for Charter market. She is currently located on the New River in Fort Lauderdale, FL and easy to show. Ready to go cruising this season.

Please call for more details and to arrange to see her in person...

Basic Information

Category: Motor Yacht

Sub Category: Flybridge

Model Year: 2013

Year Built: 2013

Country: United States

Coast Guard #: 1245699

Fly Bridge: Yes

Cockpit: Yes

Dimensions

LOA: 95' 0" (28.96m)

Beam: 23' 7" (7.19m)

Max Draft: 6' 2" (1.88m)

Speed, Capacities and Weight

Water Capacity: 476 Gallons

Holding Tank: 291 Gallons

Fuel Capacity: 3170 Gallons

Accommodations

Total Cabins: 4

Total Heads: 6

Captain Cabin: True

Hull and Deck Information

Hull Material: Fiberglass

Engine Information

Engines: 2

Manufacturer: Caterpillar

Model: C32A

Engine Type: Inboard

Fuel Type: Diesel

DETAILED INFORMATION

Base and Options

- Zero speed stabilizers
- Hydraulic stern thruster
- Humphree Intruder trim Tabs
- Video cameras- aft cockpit,engine room, tow camera plus both side decks
- Fresh Air system
- Oil change system- engines and generators
- Predisposition for transom name backlighted
- Shore power converter
- Underwater lights total 8 white lights. Added 2 on ort and stb master
- Dimmers for cockpit and flybridge
- Folding bimini top (new canvas)-Bow
- 2 spotlights- aft flybridge
- Hard top with opening roof
- Additional radar arch
- Crane on flybridge
- Custom cabinet with gas bbq
- Galley door to cover shelves
- Additional furniture next to bar
- Central vacuum system
- Wine cooler
- Rubrail on swim platform and sponsoms
- Shelves over engines for working space
- Natural stone wet bar top
- Flybridge teak deck
- Additional Pullman beds in guest cabin
- Sea recovery watermaker (larger Size) Aqua Matic 1800 (75 GPH)
- Additional glendenning cable master
- Remove 95 logo from sides of arch
- Dual Oversized Hot water heaters
- Two umbrella bases-bow area
- Hi-lo mechanism for fly table
- Icemaker predisposition on fly
- Removable mast
- 3 lounge chairs
- Custom headboard for master cabin
- Additional tower bar, day, guest and VIP heads
- Thicker pad under master carpet
- Door stop on salon door
- Additional small drawer in salon cabinet

- Custom Sofa and 2 Arm Chairs
- Garbage disposal
- Different grid on galley fancoil
- Custom vanity in master cabin
- One vanity chair in master cabin
- Isotherm safe 30
- Make up mirror for the head
- Additional shower set above shower column
- Port guest, one table lamp
- Stbd guest, one lamp
- 3 adj.spotlights in salon
- 2 adj. spotlights in master

Upgrades

- 6 Underwater lights
- AC Chiller system and Fresh Air Make up Unit all Replaced late 2017
- Painted Tenerife Blue hull sides with ceramic coating done yearly
- Dual cradle mounted Zodiak Solas 8 person rated life Rafts
- ZAR ZF 2 tender w/ 60hp Yamaha outboard mounted on aft FLY bridge
- Custom bedding and UPGRADED mattresses in all cabins
- Lower Main deck has new 3/4" light oak flooring
- New Salon and Dining Furniture.
- TWO Hot water Heaters
- Added new teak on the Swim Paltform lift
- Fridge in the master suite
- UPGRADED larger TV in the salon and Helm Seating area
- New UPGRADED surfaces on the cabinets and wet bar.
- Added light oak details in the Cabinets
- New Custom Ceiling inserts (removed original dark wood)
- New Window Blinds and Treatment
- Interior carpeting replaced few years ago
- Overhead engine work benches
- A Sea power transformers for power conversion worldwide
- GARMIN electronics upgrade (see details below) October 2019
- KVH HD-7 Tri-Americas LNB w/16 tuner capacity (8 currently in use) Matching dummy dome housing small antenna farm New Oct. 2019

Main Helm(2) Garmin 17" Chartplotters(3) Garmin GMI 20 mini displays(2) Garmin Grid 20 wireless controllers Simrad A2004 comercial grade autopilot control head(2) Garmin GHS 11 VHF

Fly Helm(2) Garmin 16" Chartplotters(1) Garmin GMI 20 mini display(2) Garmin Grid 20

wired controllers Simrad A2004 commercial grade autopilot control head(2) Garmin GHS 11 VHF 2nd Station

Crew Area(1) Garmin 8" Chartplotter(1) Garmin GMI 20 @ Emergency steering station

AIS Class B Sirius XM Offshore Weather Airmar Weather Station Depth/Speed/Temp Transducer

Main Engines

- CAT C32 ACERT
- Diesel engine 12V cylinders.
- Max power: 1415 kW @2300 rpm

Bow Thruster

- Hydraulic system
- Power at the propeller: 35kW (33.5 hp)

Transom

- Hydraulic lift swim platform
- Electro-hydraulic retractable gangway, starboard side
- Water shore connection, shower, fresh water both sides
- Shore power inlets
- Black water shore discharge system on starboard side
- Watertight door to access lower deck /crew quarters placed in the middle of the transom

Cockpit

- C-shaped fiberglass settee for 6 people with cushions
- Cockpit table in teak
- Four folding chairs
- Fiberglass bar cabinet with fridge, trash bin
- Control panel for the gangway and the swim platform, placed in the handrail on starboard side of the settee
- Fresh water inlets on port and starboard side
- Watertight halogen lights on the ceiling
- Covers for the settee
- Drainage holes

Salon/ Dining Area

- Custom L-shaped Sofa
- 2 Custom Club chairs
- Custom Built AV Cabinets for UPGRADED TV
- Furniture with hi-lo system for TV
- Furniture between salon and dining area, for storage of dishware, glassware and cutlery
- Dining table with 8 dining chairs
- Storage cabinet on starboard side in the dining area
- Bar unit with marble top, Fridge and Icemaker
- Storage cabinet on port side next to the bar
- Sub Zero Wine cooler
- Sliding door diving the dining area and the wheelhouse
- Direct and indirect lights on ceiling

Galley

- Side access door on starboard side on the superstructure
- Slide access door from the dining area
- Working top in granite with sink and cooking top
- Furniture with storage and oven on port side
- Furniture with microwave, dishwasher, drawer and Spice Rack on starboard side
- Hanging cabinets on port and starboard sides, with storage
- Fridge, freezer on bow bulkhead
- Electric 5 burner cook top with Extractor Hood

Wheelhouse

- Equipped with:
 - Storage cabinet on port side
 - Main engines control
 - Main engines and inverters gauges
 - Bow thruster control
 - Navigation electronics New GARMIN equipment 10/2019
- Main Helm(2) Garmin 17" Chartplotters(3) Garmin GMI 20 mini displays(2) Garmin Grid 20 wireless controllers Simrad A2004 commercial grade autopilot control head(2) Garmin GHS 11 VHF

Crew Area

(1) Garmin 8" Chartplotter(1) Garmin GMI 20 @ Emergency steering station

AIS Class B Sirius XM Offshore Weather Airmar Weather Station Depth/Speed/Temp Transducer

- Intercom controls
- 15" touch screen to control and monitor the following systems:
- 220V power system
- 24V power system
- Navigation
- Lights, navigation lights, searchlight, horn, wipers
- Indicator alarms of: fuel tanks level, water tank level, grey and black water tanks
- Bilges
- Batteries
- Fire alarm system
- Central staircase to lower deck
- Sofa C-shaped on port side with storage underneath and storage drawer on the side
- Natural Stone table
- Two single pilot seats
- Electrical panel placed on aft of the helm seats

Master Cabin

- Private access with separate staircase from the salon
- Lower deck lobby with storage area
- Double bed with storage underneath
- Two nightstands with two drawers each
- Two reading lamps
- Indirect lights on ceiling
- Direct lights on ceiling
- Panoramic windows
- Opening portholes on both sides
- Custom sofa
- Dressing area on port side with two wardrobes
- Drawer columns on starboard and port sides
- Custom Desk with chair on starboard side
- TV on aft bulkhead
- Safe box
- Fridge and Stone Top for Coffee station

Aft Master Head

- WC tecma
- Bidet

- Sink
- Jacuzzi water tub
- Mirror, shelves and cabinet under sink

Bow Master Head

- WC tecma
- Sink
- Mirror, shelves and cabinet under sink
- Shower with column and central rain shower on ceiling

VIP Cabin

- Double bed with storage underneath
- Two nightstands with drawers
- Wardrobe with shelves on starboard side
- Wardrobe with hanging bar and shelves on aft starboard
- Storage cabinet on starboard side
- Storage cabinet with drawers and vanity on port side
- Storage area behind the headboard panel
- Hanging cabinets on both sides above windows
- Emergency hatch on ceiling
- Upgraded Natural Stone surfaces
- Direct TV sat

VIP Head

- WC tecma
- Bidet
- Sink
- Mirror, shelves and cabinet under sink
- Shower with column and central rain shower on ceiling

Guest Cabins

- Access from the lower deck corridor
- Double bed with storage underneath
- Nightstand in the middle with 4 drawers
- Wardrobe with hanging bar and drawer
- Storage cabinet on hull side

- Storage cabinet forward
- Pullman berths for each cabin

Guest Heads

- WC tecma
- sink
- Mirror, shelves and cabinets under sink
- Cabinet with drawers on hull side
- Shower with column and central rain shower on ceiling

Flybridge

- Accessible through external staircase in the aft cockpit with teak steps.
- Pilot console places on port side includes:
 - Steering wheel
 - Main engine controls
 - Main engines and reversing gear gauges
 - Instruments for navigation NEW GARMIN EQUIPMENT
 - Fly Helm(2) Garmin 16" Chartplotters(1) Garmin GMI 20 mini display(2) Garmin Grid 20 wired controllers Simrad A2004 commercial grade autopilot control head(2) Garmin GHS 11 VHF 2nd Station
- Bow thruster control
- Forward anchor winches control
- Navigation lights control
- Horn control
- Search light control
- Fire extinguisher pump control
- Maneuvering intercom
- Helm settee in fiberglass with cushions on starboard side, with 3 seats, backrest and storage underneath
- Bar unit on port side with counter top on granite equipped with fridge and storage
- Storage space in the fiberglass on bow, starboard side L-shaped sofa area for 3 people with cushions and storage space inside, placed on starboard side, beside the console station
- Table in teak in front of the sitting area on starboard side
- Three folding chairs
- Storage unit in fiberglass on starboard side, between the bow sofa and the dining area
- C-shaped sofa on starboard with storage underneath
- One table in teak for 10 people on starboard side, with central removable extension
- Plumbing & Electrical for Hot Tub hidden under deck
- Fiberglass roll bar includes:

- Navigation lights, antennas, horn
- Searchlight placed on bow of the windscreen of the flybridge
- Drainage holes
- Rope light under all of the raised fiberglass furniture
- Watertight spotlights on the roll bar
- Covers for the sofas, sunpad, tables, bar cabinets and console

Bow

- Chain storage with drainage
- Chain washer through the fire extinguisher hose
- Sunbathing cushions area on the superstructure
- C-shaped sofa integrated in the superstructure, with cushions and backrest
- Watertight halogen lights recessed in the fiberglass placed in the sofa area and in the bow mooring area
- Two teak coffee tables
- Two electric wipers for forward windows
- Black mesh for the front wheelhouse windscreen
- Emergency escape hatch from the VIP cabin

Exterior Color

BLUE

Exclusions

Owner's personal belongings.

Disclaimer

The Company offers the details of this vessel or yacht in good faith but cannot guarantee or warrant the accuracy of this information nor warrant the condition of the vessel. A buyer should instruct his representatives, agents, or his surveyors, to investigate such details as the buyer desires validated. This vessel or yacht is offered subject to prior sale, price change, or withdrawal without notice.

PHOTOS

95Az-86 (Large)



95Az-89



95Az-88



95Az-87



95Az-93



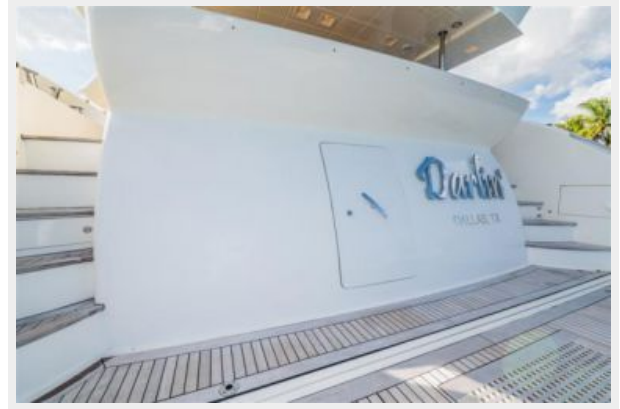
95Az-92



95Az-37



95Az-36



95Az-40



95Az-35



95Az-39



95Az-43



95Az-42



95Az-44



95Az-41



95Az-45



95Az-46



95Az-47



95Az-48



95Az-58



95Az-57



95Az-59



95Az-56



95Az-73



95Az-75



95Az-72



95Az-54



95Az-55



95Az-53



95Az-49



95Az-52



95Az-51



95Az-60



95Az-61



95Az-62



95Az-63



95Az-64



95Az-65



95Az-66



95Az-5



95Az-6



95Az-7



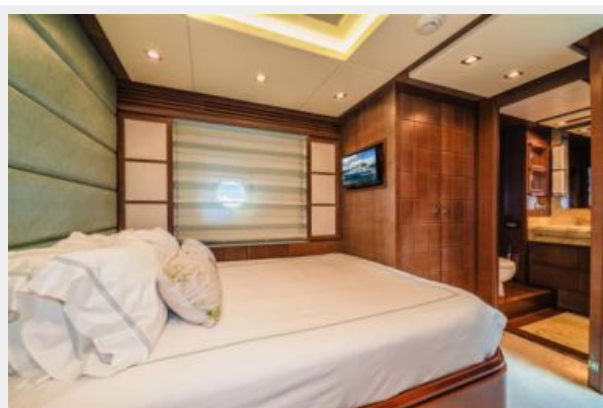
95Az-67



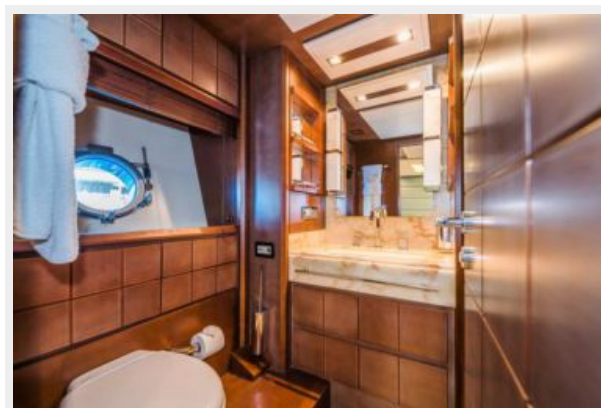
95Az-1



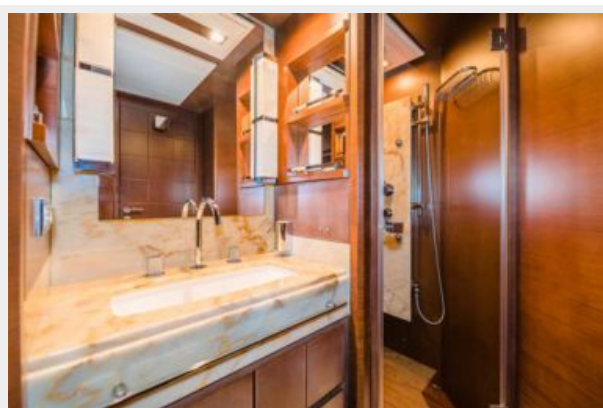
95Az-2



95Az-3



95Az-4



95Az-69



95Az-71



95Az-8



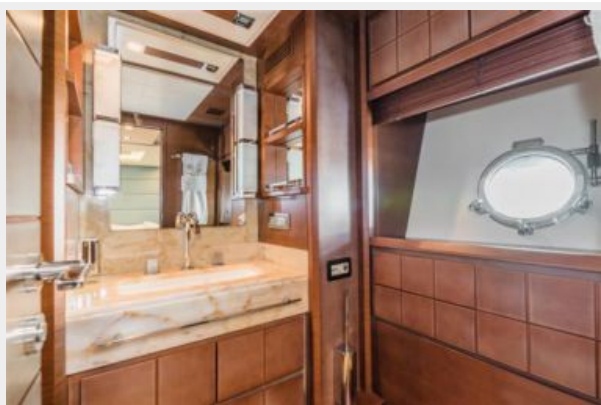
95Az-76



95Az-84



95Az-70



95Az-77



95Az-12



95Az-13



95Az-21



95Az-22



95Az-23



95Az-11



95Az-24



95Az-20



95Az-18



95Az-16



95Az-19



95Az-14



95Az-15



95Az-25



95Az-27



95Az-28



95Az-29



95Az-30



95Az-31



95Az-33



95Az-32



95Az-26



95Az-78



95Az-79



95Az-80



95Az-81



95Az-82



95Az-83



CONTACTS

Andrey Shestakov, leading yacht broker of the sales department of Shestakov Yacht Sales Inc. Shestakov Yacht Sales Inc., the official representative of the Miami/Fort Lauderdale FL headquarters.

Contact details

Email: andrey@shestakovyachtsales.com

Web: shestakovyachtsales.com/en/

Telephones

USA: +1(954)274-4435

Office hours

Monday – Saturday: **9:00 - 21:00** EDT

Sunday: **closed**

Address



Harbour Towne Marina, 850 NE 3rd St,
STE 213, Dania, FL 33004