

## FREDDY — SANLORENZO



**Builder:** SANLORENZO

**Year Built:** 2017

**Model:** Motor Yacht

**Price:** PRICE ON APPLICATION

**Location:** United States

**LOA:** 106' 0" (32.31m)

**Beam:** 23' 1" (7.04m)

**Max Draft:** 6' 4" (1.93m)

**Cruise Speed:** 24 Kts. (28 MPH)

**Max Speed:** 28 Kts. (32 MPH)

Our experienced yacht broker, Andrey Shestakov, will help you choose and buy a yacht that best suits your needs **Freddy — SANLORENZO** from our catalogue. Presently, at Shestakov Yacht Sales Inc., we have a wide variety of yachts available on our sale's list. We also work in close contact with all the big yacht manufacturers from all over the world.

If you would like to buy a yacht **Freddy — SANLORENZO** or would like help answering any questions concerning purchasing, selling or chartering a yacht, please call **+1(954)274-4435**

# TABLE OF CONTENTS

|                              |    |
|------------------------------|----|
| TABLE OF CONTENTS            | 2  |
| SPECIFICATIONS               | 5  |
| Overview                     | 5  |
| Basic Information            | 5  |
| Dimensions                   | 5  |
| Speed, Capacities and Weight | 6  |
| Accommodations               | 6  |
| Hull and Deck Information    | 6  |
| Engine Information           | 6  |
| DETAILED INFORMATION         | 7  |
| AMERICA'S EDITION            | 7  |
| Exclusions                   | 11 |
| Disclaimer                   | 11 |
| PHOTOS                       | 12 |
| Freddy Starboard View        | 12 |
| Freddy Port Profile          | 12 |
| Salon                        | 12 |
| Salon Dining                 | 12 |
| Flybridge Lounge             | 12 |
| Aft Deck Dining              | 12 |
| Foward Lounge                | 13 |
| Bow Seating                  | 13 |
| Balcony                      | 13 |
| Salon                        | 13 |
| Salon                        | 13 |
| Salon                        | 13 |
| Salon                        | 14 |
| Pilothouse                   | 14 |

|                                   |           |
|-----------------------------------|-----------|
| Pilothouse                        | 14        |
| On Deck Primary Stateroom         | 14        |
| Primary Stateroom                 | 14        |
| On Deck Primary Stateroom         | 14        |
| On Deck Primary Stateroom         | 15        |
| On Deck Primary Stateroom         | 15        |
| Primary Head                      | 15        |
| Primary Stateroom Looking Forward | 15        |
| Primary Stateroom Head            | 16        |
| Lower Foyer                       | 16        |
| Galley Below                      | 16        |
| VIP Stateroom                     | 16        |
| VIP Head                          | 17        |
| Starboard Twin Stateroom          | 17        |
| Guest Queen Stateroom             | 17        |
| Engine Room                       | 17        |
| Engine Room                       | 17        |
| Flybridge                         | 17        |
| Flybridge                         | 18        |
| Flybridge Dining                  | 18        |
| Flybridge Helm                    | 18        |
| Flybridge Lounge                  | 18        |
| Flybridge                         | 18        |
| Flybridge Lounge Aerial View      | 18        |
| GA                                | 19        |
| Bow Lounge Aerial View            | 19        |
| <b>CONTACTS</b>                   | <b>20</b> |
| Contact details                   | 20        |
| Telephones                        | 20        |

|              |    |
|--------------|----|
| Office hours | 20 |
| Address      | 20 |

---

# SPECIFICATIONS

---

## Overview

---

Freddy is a beautiful planning yacht with 925 hours. Her familiar, yet updated lines reflect over 50 years of nautical expertise and handcrafted quality. Designed to specifically suit the Americas market, she has full "Americas Edition Standard" specifications, plus innovative interior and exterior features.

The focal point of the main salon is a stunning hydraulic drop-down terrace. A substantial garage stores a tender and water toys, leaving the decks and flybridge uncluttered for entertaining. At the bow is a seating and sunbathing area shaded by a removable sail-cover style awning.

Accommodations include an on-deck Master stateroom, two spacious VIP staterooms and two guest staterooms. For ultimate privacy, all staterooms have ensuite heads. One guest stateroom features a convertible sliding berth system to allow for a twin or double berth arrangement. Crew accommodations for 5

## DUTY PAID

---

## Basic Information

---

**Category:** Motor Yacht

**Sub Category:** Flybridge

**Model Year:** 2017

**Year Built:** 2017

**Country:** United States

**Fly Bridge:** Yes

**Cockpit:** Yes

---

## Dimensions

---

**LOA:** 106' 0" (32.31m)

**Beam:** 23' 1" (7.04m)

**Max Draft:** 6' 4" (1.93m)

---

## Speed, Capacities and Weight

---

**Cruise Speed:** 24 Kts. (28 MPH)

**Max Speed:** 28 Kts. (32 MPH)

**Displacement:** 275578 Pounds

**Gross Tonnage:** 199 Pounds

**Water Capacity:** 739 Gallons

**Holding Tank:** 369 Gallons

**Fuel Capacity:** 3275 Gallons

---

## Accommodations

---

**Total Cabins:** 5

**Total Berths:** 4

**Sleeps:** 10

**Total Heads:** 6

**Crew Cabin:** 5

**Crew Sleeps:** 6

**Crew Heads:** 3

---

## Hull and Deck Information

---

**Hull Material:** Fiberglass

**Hull Configuration:** Deep Vee

**Interior Designer:** Marty Lowe

---

## Engine Information

---

**Engines:** 2

**Manufacturer:** MTU

**Model:** 16V2000 M96

**Engine Type:** Inboard

**Fuel Type:** Diesel

---

# DETAILED INFORMATION

---

## AMERICA'S EDITION

---

### ELECTRICAL SYSTEM

Electrical system: 127/220V

Frequency convertor: ASEA (220V/110V 50Hz/60Hz) with seamless transfer, including deletion of isolation transformers

Shore power connections: Two (2) 220V AC 100A Threephase 60Hz

Generators: Two (2) Kohler 55KW

Failsafe galvanic isolator for dry dock

Battery charger: 12V/25A for generator batteries

Aft Glendenning Cablemasters with 30m (98') cable: Two (2) CM8

GFCI distributed in technical room, bathroom, galley and exterior utilizing waterproof boxes in engine room and lazarette

Isolation transformers (not installed in case of Frequency Converter installation)

Double gang 110V 60Hz USA/EU sockets

One (1) 24V master switch dedicated to navigation electronics at pilothouse

### ENGINE ROOM EQUIPMENT

Double Racor filters for generators

Electric pump in lieu of manual pump for engine oil change system (not including dirty oil storage tank)

Ball valve thruhull fittings (engine cooling exhausts remain as gate valves)

Engine oil change system with manual pump (upgraded below)

Overboard venting for dryer, in lieu of selfcontained ventilation

Watermaker: Sea Recovery 1800 gallons/day (includes predisposition)

Additional fresh water purification system with active carbons

Additional grey water pump installed in bypass

---

Additional black water pump installed in bypass

Installation of FM200 fire system equipment (USCG approved)

## **AIR CONDITIONING SYSTEM**

Tropicalized air conditioning system (twin chillers) with chilled water piping insulation upgrade: 240,000 BTU

Air conditioning condensation draining overboard

Ozone treatment for air conditioning system

## **MANEUVERING CONTROLS**

MTU Blue Line controls

## **NAVIGATION ELECTRONICS**

Raymarine VHF with US channels

Additional electrical conduits between the engine room, pilothouse, flybridge helm station and hard top

FLIR thermal camera for night vision/low light

## **COMPLEMENTS FOR THE EXTERIOR**

Three (3) Freshwater outlets: Flybridge, aft and bow

Lateral gangway: Marquipt Sea Stair in stainless steel with teak steps

Prop speed antifouling system on shafts, propellers, intruder, bow and stern thruster propellers, swim platform

Disappearing stern shower

Stainless steel column shower on flybridge

Teak flybridge deck

Aft flybridge awning: Sailcover sun shade system with SeaSmart removable stainless steel stanchions

Bow seating area awning: Sailcover sun shade system with SeaSmart removable carbon fiber stanchions

Manual hilow table for bow seating area; convertible to a sunbed with included cushion filler



panel

Two (2) electric hilot tables for the aft deck; convertible to make one large table

Custom teak cabinet on the flybridge to house the Kenyon Texan BBQ

Paola Lenti furnishings and Exterior décor

Six (6) Underwater lights: OceanLED 7000 lumen

Custom made flybridge pilot cabinet modified to store the TV lift

## **APPLIANCES**

Washing machine: Asko

Dryer: Asko

Cooktop: Miele

Oven: Miele

Ventilation fan: Miele

Dishwasher: Miele

Galley upright refrigerator/freezer: Two (2) SubZero 700TCI with drawer units

Sink/food waste disposal: Insinkerator Compact 3/4 HP

Microwave: Sharp

Wine cooler (24"): SubZero

Salon bar ice maker: Scotsman

Salon bar refrigerator: Frigonautica

Flybridge bar refrigerator: Frigonautica

Flybridge bar ice maker: Indel Webasto, clearcube

## **ALARMS AND SECURITY**

Five (5) Camera CCTV IP system: Two (2) fixed cameras in the cockpit and three (3) fixed cameras in the engine room. Includes DVR, one (1) monitor and monitoring on the crew mess TV.

Additional fullfunction touch screen systems monitor located in crew mess

## **ELECTRONICS**

KVH HD7 Antenna SAT TV

iPad remote control lighting for the exterior, main deck and pilothouse (actual buttons remain as switches)

## **COMPLEMENTS FOR THE INTERIOR**

Salon terrace with electrohydraulic opening system

Additional set of enlarged hull side windows: Two (2) port and two (2) starboard; total of eight including standard windows

Upgraded wheelhouse dashboard with TV repetition on one of the monitor

Lower deck floating staircase in stainless steel

Indirect LED lighting behind drapery curtains in master, VIP and guest staterooms

Master, VIP and guest bedframes and desk tops covered in leather

Convertible sliding berth system in guest stateroom; allows for twin or double berth arrangement

VIP and guest stateroom TVs mounted behind a mirror panel; chrome frame around the TVs and vanity niches

Five (5) Overhead rain showers: One for master shower and for each VIP/guest shower

Six (6) Teak marble walls in lieu of standard lacquer: Master water closet/shower, VIP and guest showers

Upgraded interior décor, furnishings, fixtures, lighting and artwork

Pratesi set of linens for all the boat

China, cutlery and glassware for 12 pax

One (1) Additional safe in captain's cabin

N. 4 additional electric blackout roller curtains for VIPs and guests cabin

## EXCLUSIONS

"FREDDY" is a registered name and does not convey.

Exclusions are to include but are not limited to, all owner's personal items. A detailed list of exclusions will be provided at the time of sale, upon written request.

---

## Exclusions

Owner's personal belongings.

---

## Disclaimer

The Company offers the details of this vessel or yacht in good faith but cannot guarantee or warrant the accuracy of this information nor warrant the condition of the vessel. A buyer should instruct his representatives, agents, or his surveyors, to investigate such details as the buyer desires validated. This vessel or yacht is offered subject to prior sale, price change, or withdrawal without notice.

# PHOTOS

**Freddy Starboard View**



**Freddy Port Profile**



**Salon**



**Salon Dining**



**Flybridge Lounge**



**Aft Deck Dining**





**Bow Seating**



**Foward Lounge**



**Balcony**



**Salon**



**Salon**



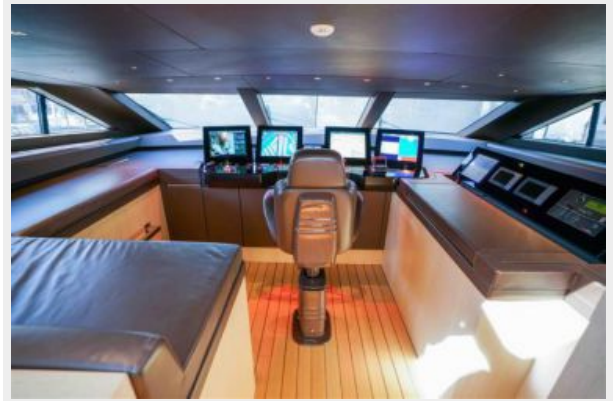
**Salon**



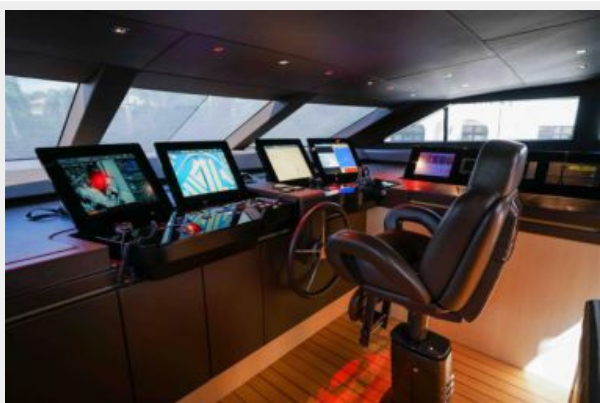
**Salon**



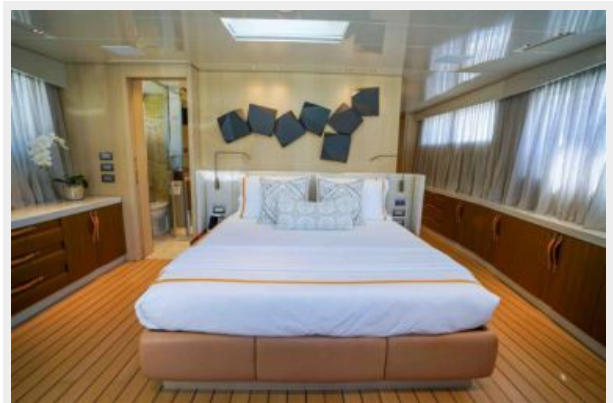
**Pilothouse**



**Pilothouse**



**On Deck Primary Stateroom**



**On Deck Primary Stateroom**



**Primary Stateroom**





**On Deck Primary Stateroom**



**On Deck Primary Stateroom**



**Primary Head**



**Primary Stateroom Looking Forward**



**Primary Stateroom Head**



**Lower Foyer**



**Galley Below**



**VIP Stateroom**





**VIP Head**



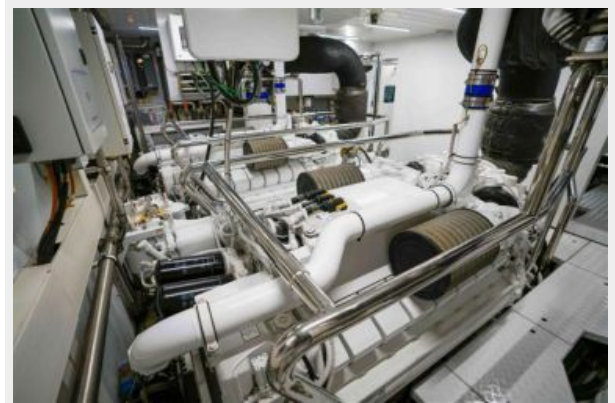
**Starboard Twin Stateroom**



**Guest Queen Stateroom**



**Engine Room**



**Engine Room**



**Flybridge**



**Flybridge**



**Flybridge Dining**



**Flybridge Helm**



**Flybridge Lounge**



**Flybridge**



**Flybridge Lounge Aerial View**





# GA

## Bow Lounge Aerial View



# CONTACTS

---

Andrey Shestakov, leading yacht broker of the sales department of Shestakov Yacht Sales Inc. Shestakov Yacht Sales Inc., the official representative of the Miami/Fort Lauderdale FL headquarters.

## Contact details

---

Email: [andrey@shestakovyachtsales.com](mailto:andrey@shestakovyachtsales.com)

Web: [shestakovyachtsales.com/en/](http://shestakovyachtsales.com/en/)

## Telephones

---

USA: +1(954)274-4435

## Office hours

---

Monday – Saturday: **9:00 - 21:00** EDT

Sunday: **closed**

## Address

---



Harbour Towne Marina, 850 NE 3rd St,  
STE 213, Dania, FL 33004