

## KISMET — OCEAN ALEXANDER



**Судостроитель:** OCEAN ALEXANDER

**Год постройки:** 2005

**Модель:** Моторная яхта

**Цена:** ЦЕНА ЯХТЫ ПО ЗАПРОСУ

**Местонахождение:** Trinidad and Tobago

**Длина общая:** 45' 0" (13.72m)

**Ширина:** 14' 8" (4.47m)

**Макс. осадка:** 4' 0" (1.22m)

**Крейс. скорость:** 10 Kts. (12 MPH)

**Макс. скорость:** 14 Kts. (16 MPH)

Купить Kismet — OCEAN ALEXANDER а также выбрать подходящую вам яхту из нашего каталога яхт вам поможет опытный яхтенный брокер Андрей Шестаков. На сегодняшний день компания Shestakov Yacht Sales Inc. имеет большое количество яхт в собственном списке продаж, а также тесно сотрудничает со всеми крупными яхтенными производителями по всему миру.

Для того чтобы купить яхту Kismet — OCEAN ALEXANDER а также проконсультироваться по любому вопросу связанному с покупкой, продажей, чартером яхт позвоните по телефону **+7(918)465-66-44**.

# ОГЛАВЛЕНИЕ

ОГЛАВЛЕНИЕ	2
ХАРАКТЕРИСТИКИ	4
Основная информация	4
Размеры	4
Скорость, вместимость и масса	4
Размещение	4
Корпус и палуба	4
Информация о двигателе	5
ПОДРОБНОЕ ОПИСАНИЕ	6
Description	6
Vessel Walkthrough	6
Salon	7
Galley	7
Master Stateroom	7
Guest Stateroom	8
Pilothouse	8
Hull and Deck	9
Electrical System	9
Mechanical Equipment and Engine Room	10
Exterior Hardware & Fitting	10
Исключения	11
Отказ от ответственности	11
ФОТОГРАФИИ	12
45-2005-Ocean-Alexander-Motor-02	12
45-2005-Ocean-Alexander-Motor-03	12
45-2005-Ocean-Alexander-Motor-04	12
45-2005-Ocean-Alexander-Motor-05	12
45-2005-Ocean-Alexander-Motor-06	13

---

45-2005-Ocean-Alexander-Motor-07	13
45-2005-Ocean-Alexander-Motor-08	13
45-2005-Ocean-Alexander-Motor-09	13
45-2005-Ocean-Alexander-Motor-10	13
45-2005-Ocean-Alexander-Motor-11	13
45-2005-Ocean-Alexander-Motor-12	14
45-2005-Ocean-Alexander-Motor-13	14
45-2005-Ocean-Alexander-Motor-14	14
45-2005-Ocean-Alexander-Motor-15	14
45-2005-Ocean-Alexander-Motor-17	14
45-2005-Ocean-Alexander-Motor-16	14
45-2005-Ocean-Alexander-Motor-18	15
45-2005-Ocean-Alexander-Motor-19	15
45-2005-Ocean-Alexander-Motor-20	15
<b>КОНТАКТЫ</b>	<b>16</b>
Контактная информация	16
Телефоны	16
Время работы	16
Адрес	16

---

# ХАРАКТЕРИСТИКИ

## Основная информация

Тип судна: Моторная яхта

Модельный год: 2005

Год постройки: 2005

Страна: Trinidad and Tobago

## Размеры

Длина общая: 45' 0" (13.72m)

Длина по ватерлинии: 42' 6" (12.95m)

Ширина: 14' 8" (4.47m)

Макс. осадка: 4' 0" (1.22m)

## Скорость, вместимость и масса

Крейс. скорость: 10 Kts. (12 MPH)

Макс. скорость: 14 Kts. (16 MPH)

Вместимость воды: 200 Gallons

Вместимость сточного бака: 60 Gallons

Объем топливного бака: 600 Gallons

## Размещение

Всего ком. состава: 2

## Корпус и палуба

Материал корпуса: Fiberglass

## Информация о двигателе

---

**Двигатели:** 2

**Производитель:** Yanmar

**Модель:** 4LHA-STP

**Тип двигателя:** Inboard

**Тип топлива:** Diesel

---

# ПОДРОБНОЕ ОПИСАНИЕ

---

## Description

---

*Kismet* has had an extremely discriminating owner who has lavished love and money on her. She has maintained the highest degree and shows better than new. She is ready to cruise and carry her new owners on to adventures of a life time.

## Vessel Walkthrough

---

When one enters *Kismet*, thru either port or starboard doors, the immediate impression is of how spacious and bright this yacht is. The plush carpet is neutral and is located in the staterooms as well as the main salon. Forward to starboard is the lower helm station with its custom helm seat and full array of electronics. The visibility from the helm seat is extremely good with large windows forward. To port is a well-designed sea going galley with a lovely teak and holly sole and abundant storage for the chef. The chef will not feel left out of the social gatherings in the salon. The Franke sink, granite counter tops, 3-burner electric cook top, microwave, fridge and disposal make producing gourmet meals a breeze. There is a good sized breakfast/buffet counter located on at the aft end of the galley.

Forward of the galley and down three steps on center line one finds the guest stateroom and guest head. The attention to detail and the fit and finish are excellent. This stateroom is a vee berth with a large filler making for an extremely comfortable guest berth for your friends or family. A large cedar lined hanging locker and numerous drawers make it easy to put away all of your guest's possessions, Opening port lights with screens add lots of natural light to this stateroom. The private guest head has a black granite counter top, separate shower stall, opening port light and a fresh water Tecma head.

Back up the three steps and proceeding aft one is in the main salon. Again, here the attention to detail is evident in the matched teak with its satin finish. The ultra-leather settee is both comfortable and also of a neutral color that complements the satin teak. The hi-lo table has custom-designed hassocks for both extra seating and additional storage. The settee is located to starboard and the entertainment center is located to port. The salon has very good sized windows that provide clear vistas while cruising.

Proceeding aft and down three steps, one enters the master suite with its center line queen berth. Opening port lights, an abundance of storage and a cedar lined hanging locker all add to the overall ambience of this stateroom. The master head is located to port and features black granite counter top, good storage, Tecma fresh water head, and a very comfortable separate shower stall. Total privacy from one's guests.

Outside and up on the flybridge there is very comfortable seating for your guests and family with a table perfect for al fresco dining. The pilot of your fine yacht will have great visibility from the

helm seat. Complete electronics are at one's fingertips. While underway, you can roll up the enclosure and feel the ocean breezes. With both bow and stern thrusters, she is easy to operate and docking is a breeze. You and your guests also have the choice of lounging on the aft cabin top as there is room here to put lounge chairs. The Steel head davit makes launching and retrieving the inflatable dinghy very easy for shore side excursions.

## Salon

---

- Teak paneling and cabinetry
- Carpet throughout
- Soft vinyl headliners
- Satin varnish for interior finish
- Push button handles for drawers & cupboards
- LED lights
- Hydraulic hi-low teak top table w/slider & (2) seats stored under table
- Entertainment center, port side
- Teak valance board
- Hatch to engine room
- L-shaped Ultra leather settee with storage under seats & teak table in salon
- Air Conditioning
- Home theatre DVD/CD/Tuner system
- 20" LCD Television

## Galley

---

- Black Granite counter tops
- Teak panel and cabinetry
- Storage cabinets and drawers
- Franke Sink
- Tube light under cabinets
- Teak and holly flooring
- Refrigerator with freezer
- 3-Burner electric cook-top
- Microwave convection oven
- GFI (11 OV only) AC outlet
- Disposal
- Overhead dish locker aft
- Push button handles for drawers & cupboards

## Master Stateroom

---

- Air Conditioning
- Queen size berth, with storage underneath
- Cedar lined hanging locker full height with auto lighting
- Bureau & mirror
- Night stands with drawer
- Sliding side windows w/screens
- Storage/shelves hull side
- Private head with stall shower
- Tube lights under bunk
- DVD/DC system
- 20" LCD TV set up with storage behind TV
- Push button handles for drawers & cupboards
- LED lights
- Painted floors with carpet

---

## Guest Stateroom

---

- Air Conditioning
- Painted floors with carpet
- Large V-berth with center filler
- Soft vinyl on hull sides
- Cedar lined hanging locker w/auto lighting
- Adjacent head with stall shower
- LED lights
- Mirror
- Push button handles for drawers & cupboards

---

## Pilothouse

---

- Two control stations FB & salon
- Electric MMC engine control with synchronization
- Complete engine instrumentation
- Raymarine C-80 Chart Plotter/GPS
- Raymarine Tridata
- Icom 604 VHF radio
- Flow Scan
- Furuno NavNet 1920C
- Simrad AP26 autopilot
- Furuno 4kw radar
- Electric 8hp bow thruster
- Stern thruster
- Hydraulic steering system



- International navigation lights
- Engine alarm system, audio oil and temperature
- Heavy-duty Grover air horn
- Tank Tender system for (4) tanks
- Steering control station with bolster helm seat
- Holding tank gauge

## Hull and Deck

---

- Hand-laid, gel coated FRP hull
- Solid fiberglass hull bottom
- Carbon fiber reinforced structural stringers unit
- AL-600 core on superstructure
- S/S rail gates port & stbd
- Fiberglass caprails
- Windshield on FB, Lexan
- FB seat w/storage underneath
- Fiberglass bow pulpit with S/S anchor roller
- Frameless window
- Tempered dark tinted window glass
- Screens on all opening windows, and port light screen/shade for hatch
- Diamond Sea-Glaze sliding doors salon to side deck, port and stbd side
- Recessed fiberglass step from side deck to sundeck
- (2) Ocean Alexander Flybridge helm seats
- Fiberglass swim platform
- Fresh water wash down in cockpit & foredeck
- Sea-water wash down at bow & cockpit
- S/S water tanks with sight gauges

## Electrical System

---

- Kohler 8KW (8E0ZD)generator with sound shield
- Heavy duty batteries
- 12V lights in all compartments
- Engine battery disconnect switch
- Battery paralleling system w/control switch breakers
- 2000W inverter/charger
- Bonding system throughout
- Shore power receptacle 1x50AMP
- 125/240 in two locations
- Polarity reverse indicating light

---

## Mechanical Equipment and Engine Room

---

- Pressurized fresh water system
- Water heater, 20 gal.
- Aluminum fuel tanks with sight gauges
- Color coded piping for fuel and water
- Holding tank plumbed dockside or overboard discharge
- Common drainage system for sink, shower, bilge & exterior deck
- (4) Electric bilge pumps 12V auto/manual switch, sumped when available
- One manual bilge pump
- Engine room high water bilge alarm
- Lighted bilge
- Spare conduit running from engine room to lower station & engine room to FB
- Bronze sea cocks and raw water strainers on all intakes
- Engine room lead foam sound insulation
- Dual Racor fuel/water separator for mains & generator
- (2) Engine room vent blowers, 12V
- Heron rubber floor on engine room walkway
- (2) 110V fluorescent lights
- 12V ceiling lights & anti-explosion type in engine room
- FRP exhaust pipes with mufflers
- Dripless engine shaft seal logs
- Dripless seals for rudder posts
- Oil changing system for both engines and genset
- 40,000 BTU Air conditioning split between master stateroom, salon, galley and guest stateroom salon, with (3) electronic controls
- Twin Yanmar diesels 240 horse power each with 470 hours
- Kohler 8 kw. Generator with 465 hrs.

---

## Exterior Hardware & Fitting

---

- Stainless steel hardware and rudders
- 1-1/4" S/S handrails & stanchions
- S/S cleats & hawse holes
- S/S square port lights, 4 fwd
- Vertical windlass VRC 1250
- Aft deck shower, dock side water and TV phone inlet
- Passive stabilizer on hull bottom
- Bronze through hull fittings
- Teak steering wheel inside & S/S on FB Windshield wipers & washers
- S/S handrails on back transom
- 45 lb. anchor
- Stainless steel framed enclosure with heavy Stamoid material and full roll ups

- Steelhead Davit
- Blue covers for windscreen
- Caribe 8' dinghy with 8 hp Mercury

## Исключения

---

При продаже яхты исключаются личные вещи владельца.

## Отказ от ответственности

---

Компания предоставляет описание судна или яхты добросовестно, но не может гарантировать точность этой информации, а также не ручается за техническое состояние. Покупатель должен проинструктировать своих агентов или оценщиков исследовать представленную информацию более подробно, по собственному желанию. Продажа судна или яхты, изменение цены или снятие с продажи будет происходить без предварительного уведомления.

# ФОТОГРАФИИ

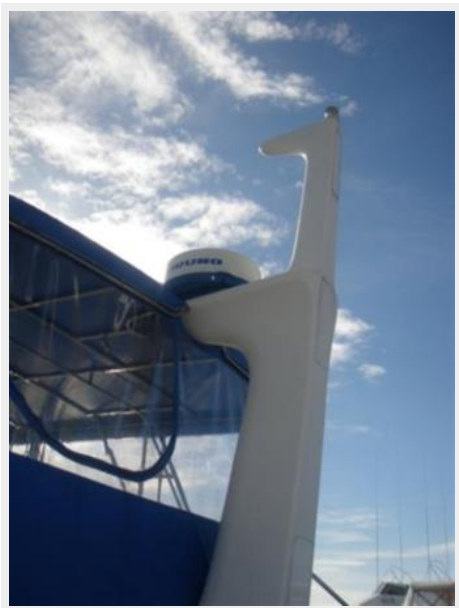
45-2005-Ocean-Alexander-Motor-02



45-2005-Ocean-Alexander-Motor-03



45-2005-Ocean-Alexander-Motor-04



45-2005-Ocean-Alexander-Motor-05



45-2005-Ocean-Alexander-Motor-06



45-2005-Ocean-Alexander-Motor-07



45-2005-Ocean-Alexander-Motor-08



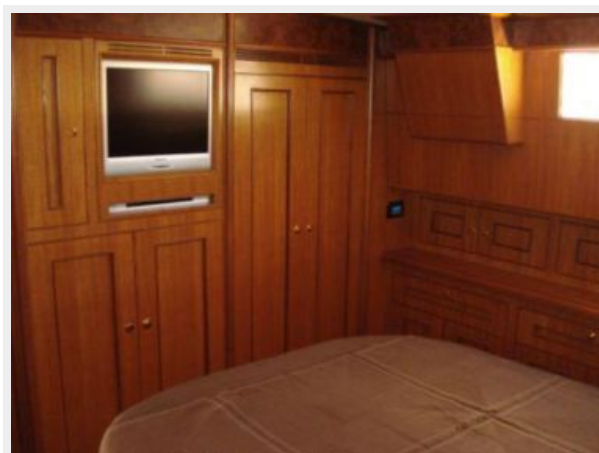
45-2005-Ocean-Alexander-Motor-09



45-2005-Ocean-Alexander-Motor-10



45-2005-Ocean-Alexander-Motor-11



45-2005-Ocean-Alexander-Motor-12



45-2005-Ocean-Alexander-Motor-13



45-2005-Ocean-Alexander-Motor-14



45-2005-Ocean-Alexander-Motor-15



45-2005-Ocean-Alexander-Motor-17

45-2005-Ocean-Alexander-Motor-16



45-2005-Ocean-Alexander-Motor-18



45-2005-Ocean-Alexander-Motor-19



45-2005-Ocean-Alexander-Motor-20



# КОНТАКТЫ

---

Андрей Шестаков (Andrey Shestakov) – ведущий яхтенный брокер отдела продаж яхт и судов компании Shestakov Yacht Sales Inc. Официальный представитель Shestakov Yacht Sales Inc. для русскоговорящих клиентов в центральном офисе компании в Майами/Форт Лодердейл/Флорида/США.

## Контактная информация

---

Email: [andrey@shestakovyachtsales.com](mailto:andrey@shestakovyachtsales.com)

Web: [shestakovyachtsales.com](http://shestakovyachtsales.com)

## Телефоны

---

Краснодарский край: **+7(918)465-66-44**

США, Майами, Флорида: **+1(954)274-4435**

## Время работы

---

Понедельник – Суббота: **9:00 - 21:00**  
EDT

Воскресенье: **Закрито**

## Адрес

---



Harbour Towne Marina, 850 NE 3rd St,  
STE 213, Dania, FL 33004