

ILLUSION PLUS — PRIDE MEGA YACHTS



Судостроитель: PRIDE MEGA YACHTS

Год постройки: 2018

Модель: Моторная яхта

Цена: ЦЕНА ЯХТЫ ПО ЗАПРОСУ

Местонахождение: Spain

Длина общая: 290' 5" (88.50m)

Ширина: 50' 6" (15.39m)

Мин. осадка: 0' 0" (0.00m)

Макс. осадка: 13' 2" (4.00m)

Крейс. скорость: 15 Kts. (17 MPH)

Макс. скорость: 17 Kts. (20 MPH)

Купить ILLUSION PLUS — PRIDE MEGA YACHTS а также выбрать подходящую вам яхту из нашего каталога яхт вам поможет опытный яхтенный брокер Андрей Шестаков. На сегодняшний день компания Shestakov Yacht Sales Inc. имеет большое количество яхт в собственном списке продаж, а также тесно сотрудничает со всеми крупными яхтенными производителями по всему миру.

Для того чтобы купить яхту ILLUSION PLUS — PRIDE MEGA YACHTS а также проконсультироваться по любому вопросу связанному с покупкой, продажей, чартером яхт позвоните по телефону **+7(918)465-66-44**.

ОГЛАВЛЕНИЕ

ОГЛАВЛЕНИЕ	2
ХАРАКТЕРИСТИКИ	5
Обзор	5
Основная информация	5
Размеры	5
Скорость, вместимость и масса	6
Размещение	6
Корпус и палуба	6
Информация о двигателе	6
ПОДРОБНОЕ ОПИСАНИЕ	7
Overview	7
General Specifications	8
Mechanical Equipment	8
Tank Capacities	9
Navigation Equipment	9
Communication Equipment	9
Deck Equipment	10
Entertainment Equipment	10
Galley and Laundry Equipment	10
Crew Quarters	11
Security, Safety, and Fire-Fighting Equipment	11
Tenders and Toys	11
Исключения	11
Отказ от ответственности	11
ФОТОГРАФИИ	13
Maindeck Aft Interior Lounge	13
Maindeck Aft Interior Lounge (Cinema)	13
Maindeck Aft Dining (Meeting) Area	13

Maindeck Aft Interior Lounge	13
Maindeck Aft Dining (Meeting) Area	13
Maindeck Foyer	13
Maindeck Foyer	14
Master Stateroom	14
Master Stateroom	14
Master Bath (His)	14
Master Bath (Her)	14
Master Wardrobe	14
Library	15
Maindeck Guest Corridor	15
VIP Stateroom	15
VIP Stateroom	15
VIP Bath	15
Guest Stateroom	15
Guest Bath	16
Twin Stateroom	16
Guest Stateroom	16
Guest Lounge	16
Guest Bath	16
Upperdeck Corridor	16
Upperdeck Salon	17
Upperdeck Salon	17
Upperdeck Tea Table	17
Bridge	17
Bridge Salon	17
Ocean Lounge	17
Beauty Salon	18
Upperdeck Dining Area	18

Gym	18
Interior Sundeck Lounge	18
Bridge Aft Deck	18
Sundeck Aft Deck	18
Master Balcony	19
Upper Aft Deck	19
Upper Aft Deck	19
Maindeck and Swimming Pool	19
Spa	19
Aft Deck	19
Spa	20
Spa	20
Tender Garage	20
Stern	20
Port Bow Profile	20
Stern and Tender	20
ILLUSION PLUS Layout	21
Aerial Profile	21
КОНТАКТЫ	22
Контактная информация	22
Телефоны	22
Время работы	22
Адрес	22

ХАРАКТЕРИСТИКИ

Обзор

*Not available for sale to US residents while in US waters. Designed by Rainsford Saunders and built by Pride Mega Yachts, ILLUSION PLUS is the largest gigayacht ever to be produced in Asia. ILLUSION PLUS combines performance and comfort while offering the long-range cruising capabilities of 5000 nautical miles at 15 knots. The 88.5-meter, six-deck yacht has benefitted from private use since her 2018 launch. An innovative vertical bow and an abundance of interior volume measuring in at 3,642 gross tons coupled with her unique propulsion system make her a truly unique gigayacht. Pride worked closely with Rolls-Royce to create a diesel-electric system with Azipull thruster pods, she is ultra-efficient and quiet, without compromising her speed. The interior design is by the renowned Sinot Yacht Design. The main deck salon mezzanine feature allows the interior to be opened up creating a double-height atrium, comfortable seating and a cinema screen while an elevator connects 4 of the 6 decks. She features accommodations for 12 guests in 8 massive staterooms including a noteworthy 860-square-foot owners suite, located on its own deck. In addition to the suite, the yacht has two VIPs, two double guest cabins, one twin, and two staterooms for the owners staff on the deck below. Quarters for the 25 crew members are in 15 cabins on lower decks.

Основная информация

Тип судна: Моторная яхта

Модельный год: 2018

Год постройки: 2018

Страна: Spain

Размеры

Длина общая: 290' 5" (88.50m)

Длина по ватерлинии: 0' 0" (0.00m)

Длина палубы: 0' 0" (0.00m)

Ширина: 50' 6" (15.39m)

Мин. осадка: 0' 0" (0.00m)

Макс. осадка: 13' 2" (4.00m)

Трапы: 0' 0" (0.00m)

Длина привального бруса: 0' 0" (0.00m)

Скорость, вместимость и масса

Крейс. скорость: 15 Kts. (17 MPH)

Дальность на крейсерской скорости:
5000

Макс. скорость: 17 Kts. (20 MPH)

Водоизмещение: 3017 Pounds

Чистый вес: 3642 Pounds

Вместимость воды: 39360 Gallons

Вместимость сточного бака: 7130
Gallons

Объем топливного бака: 68945 Gallons

Размещение

Всего кают: 8

Спальные места: 12

Каюты экипажа: 15

Спальных мест экипажа: 25

Корпус и палуба

Материал корпуса: Steel

Дизайнер корпуса: Azure

Дизайнер экстерьера: Rainsford
Saunders Design

Дизайнер интерьера: Sinot Exclusive
Yacht Design

Информация о двигателе

Двигатели: 2

Производитель: Rolls Royce

Тип двигателя: Inboard

Тип топлива: Diesel

ПОДРОБНОЕ ОПИСАНИЕ

Overview

*Not available for sale to US residents while in US waters.

Designed by Rainsford Saunders and built by Pride Mega Yachts, ILLUSION PLUS is the largest gigayacht ever to be produced in Asia. ILLUSION PLUS combines performance and comfort while offering the long-range cruising capabilities of 5000 nautical miles at 15 knots. The 88.5-meter, six-deck yacht has benefited from private use since her 2018 launch. An innovative vertical bow and an abundance of interior volume measuring in at 3,642 gross tons coupled with her unique propulsion system make her a truly unique gigayacht. Pride worked closely with Rolls-Royce to create a diesel-electric system with Azipull thruster pods, she is ultra-efficient and quiet, without compromising her speed.

The interior design is by the renowned Sinot Yacht Design. The main deck salon mezzanine feature allows the interior to be opened creating a double-height atrium, comfortable seating and a cinema screen while an elevator connects four of the six decks. She features accommodations for 12 guests in 8 massive staterooms including a noteworthy 860-square-foot owners suite, located on its own deck. In addition to the suite, the yacht has two VIPs, two double guest cabins, one twin, and two staterooms for the owner's staff on the deck below. Quarters for the 25 crew members are in 15 cabins on lower decks.

Illusion Plus is a real opportunity to acquire an "as new" vessel without having to wait the building time.

Design

- Interior design by Sinot Exclusive Yacht Design
- Interior fit-out by Greenline Yacht Interiors
- Naval architecture by AZURE
- Large 6-deck volume of 3,642 GT
- 2 x Jacuzzi's including a 5 x 4m main deck Jacuzzi with waterfall feature
- Dedicated spa with sauna, steam room, massage room and lobby
- 80m² Owner's suite with his and hers bathrooms, private deck space and office
- Spacious lounges - double-level atrium in main salon
- The positioning of guest accommodation on the upper and main decks allows for maximum

natural light

- Main deck gym and beauty salon
- Cinema screen in the main deck lounge
- Elevator connecting four decks
- 3 x Custom tenders housed in a spacious lower deck tender garage
- Lower deck ocean lounge with bar

Engineering

- Diesel-electric Rolls Royce propulsion package including 2 x 1700 Kw Azipull thruster pods
- 2 x Rolls Royce 2,225 Kw generators, Rolls Royce 540 Kw Bow thruster
- Rolls Royce SAR retractable fin stabilizers
- Heinen & Hopman HVAC system
- Dynamic Positioning System – DP0 system provided by marine systems
- Touch-and-go helipad for EC 135 (uncertified)
- 5,000 nautical mile range

General Specifications

- Delivery Q3 2018
- Builder Pride Mega Yachts
- Type Full displacement twin-Azipull, diesel electric powered motor yacht
- Classification ABS A1, Commercial Yachting Service, E, AMS, ABCU, DPS-0, UWILD
- Construction Hull Steel
- Superstructure Aluminum
- Exterior Designer Rainsford Saunders Design
- Interior Designer Concept by Sinot Exclusive Yacht Design in cooperation with Pride Mega Yachts interior department
- Guests 12 in 8 cabins (180 sq. meter Master Stateroom, 2 VIP and 5 Guest)
- Crew 25 in 15 cabins

Mechanical Equipment

- 2 x Rolls Royce main engines – Diesel electric propulsion
- Engine & Generator Hours: AG1 409 / AG2 462 - MG1 990 / MG2 1220 (Sept 2018)
- Fuel MDO ISO 8217 DMX-DMA
- 2 x Propulsion 1700kW Azipull Thruster pods
- 2 x Propellers Rolls Royce
- Stabilizers Rolls Royce Aquarius 100, zero speed retractable fins
- Bow Thruster Rolls Royce – approx. 535kW

- Generators Rolls Royce - 2 x 2225kW
- Emergency Generator CAT emergency generator - approx. 238kW
- Harbour Generator 2 x CAT – approx. 550kW
- Electricity Main 2 x 2225kW + Harbour 2 x 550kW + Emergency 238kW
- 2 x Shore Power 1250A shore connection box
- 2 x Main Engine Start 27M3/H 30Bar 1175rpm 5.9kW SPERRE
- 2 x Service TMC Chargers (2x80) A
- Emergency CAT 238kW
- Hydraulics Ocean Stainless / CIMC
- Air Conditioning Heinen & Hopman HVAC
- 2 x Water Maker Idromar Reverse Osmosis freshwater makers
- Water System Deck wash pump set of 2 & freshwater supply pump set of 3 Gianneschi
- Toilet System EVAC Sewage System Technicomar / ECOMER
- 2 x Fuel Centrifuge Max Flow 1950l/h ALFA-LAVAL
- Bilge Oil Separator Facet International

Tank Capacities

- Fuel 261000 litres / 68945 US gallons
- Water / Hot Water 149000 litres / 39360 US gallons
- Lube Oil 4600 litres / 1215 US Gallons
- Dirty Oil 9000 litres / 2375 US Gallons
- Grey Water 27000 litres / 7130 US Gallons
- Black Water 16300 litres / 4305 US Gallons

Navigation Equipment

- Magnetic Compass Sperry Magnetic Compass JUPITER
- Gyro Compass Sperry NAVIGAT X MK 1
- Automatic Pilot Sperry Navipilot 4000
- Echo Sounder Skipper GDS102
- Radar Sperry Chart Radar X-band 25kW + S-band 30kW
- AIS SAAB R5 Supreme AIS
- GPS SAAB R5 Supreme DGPS
- Chart Plotter Sperry Vision Master FT ECDIS
- Navtex Sailor Navtex 6391
- Searchlights Carlisle & Finch xenon
- Camera(s) VITECK PTZ / Dome

Communication Equipment

- Satcom Sailor 6110 Mini-C
- VHF Sailor 6222 VHF / DSC
- SSB Sailor 6320 MF / HF 250W DSC
- Landline / Intercom LTE / iPhone & UHF

Deck Equipment

- 2 x Anchor Windlasses combined reversible electrically driven vertical anchor winches/capstans installed on main deck forward
- 2 x Capstans are installed, one on each side of the swim platform, for handling of the mooring lines
- 2 x Anchors hot-dip galvanizing HHP anchor
- 2 x Anchor Chains 247.5m of 36mm stud link chain, grade 3
- 4 x Boat Crane & Davits Electric-hydraulic driven Twin Swing Arm Crane for tender operation; 1 x Electric driven Rescue Boat Crane
- Passerelle Hydraulically operated telescopic
- 2 x Side boarding ladder hydraulically operated
- 2 x Luxury Jacuzzi pools
- Jacuzzi with waterfall on the aft main deck - dimension approx. 5m x 4m x 0.9m
- Jacuzzi on forward sun deck - dimension approx. 2.9m x 1.9m x 0.97m
- Luxury spa area on the bottom deck including a sauna room, a steam room, a massage room and a lobby with a TV
- Swimming Platform Hydraulically Operated Marina
- Awnings Multiplex awning system on upper deck forward and aft, bridge deck aft, and sun deck aft
- Covers Yes - for fixed exterior furniture items

Entertainment Equipment

A high-quality integrated entertainment, lighting and blinds system will be provided throughout the vessel. For luxury areas, Creston equipment will be used to manage the user interface via iPads and/or iPhones. The system includes dome antennas for high speed satellite broadband internet connection and satellite multimedia broadcasting.

Galley and Laundry Equipment

- Galley hood
- 2 x Under-counter dishwashers MIELE G7860, 1 x tall dishwasher METOS WD-7
- 2 x Combine steamer stacking together METOS MCMP61
- 1 x Salamander Metos OS2000, 1 x deep fryer EVO-600
- 1 x Bratt pan METOS Futura 85D, 1 x Range Futura PR6 + convection Chef 240

- Under counter equipment: 1 x Ice maker METOS CB425A, 2 x cold drawers METOS Proff2NT1200-GN4-MGH
- 2 x Microwave METOS MDC182
- 2 x Full height fridge METOS MBC600 and 1 x full height freezer METOS MBF600

Laundry Equipment

- 4 x Sets of MIELE washing machines and dryer's, load capacity 6.5kg
- 1 x MIELE washing machine, load capacity 13kg
- 1 x MIELE dryer, load capacity 13 - 16kg

Crew Quarters

- 1 x Captain cabin on bridge deck including office
- 10 x Crew cabins with bunk beds for 20 crew on lower deck
- 4 x Cabins with double bed for chief engineer, staff, purser and chief officer on lower deck
- Officer mess and hospital on lower deck and crew mess on bottom deck

Security, Safety, and Fire-Fighting Equipment

- Safety Doors: hatches giving access to the yacht have sensors for monitoring open/close status through the alarm, monitoring and control system
- Security: A Maritron Marine security system is designed around four levels of security supplied by Telemar
- Fire Fighting: Seawater firefighting equipment, SEMCO High-pressure water mist

Tenders and Toys

- 1 x PASCOE SY9 Beachlander
- 1 x Cockwells 9.5m Limousine
- 1 x Fassmeer RIR 625

Исключения

При продаже яхты исключаются личные вещи владельца.

Отказ от ответственности

Компания предоставляет описание судна или яхты добросовестно, но не может

гарантировать точность этой информации, а также не ручается за техническое состояние. Покупатель должен проинструктировать своих агентов или оценщиков исследовать представленную информацию более подробно, по собственному желанию. Продажа судна или яхты, изменение цены или снятие с продажи будет происходить без предварительного уведомления.

ФОТОГРАФИИ

Maindeck Aft Interior Lounge



Maindeck Aft Interior Lounge (Cinema)



Maindeck Aft Interior Lounge



Maindeck Aft Dining (Meeting) Area



Maindeck Aft Dining (Meeting) Area



Maindeck Foyer



Maindeck Foyer



Master Stateroom



Master Stateroom



Master Bath (His)



Master Bath (Her)



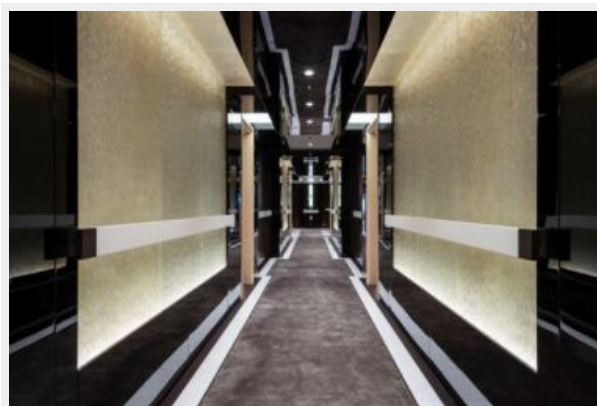
Master Wardrobe



Library



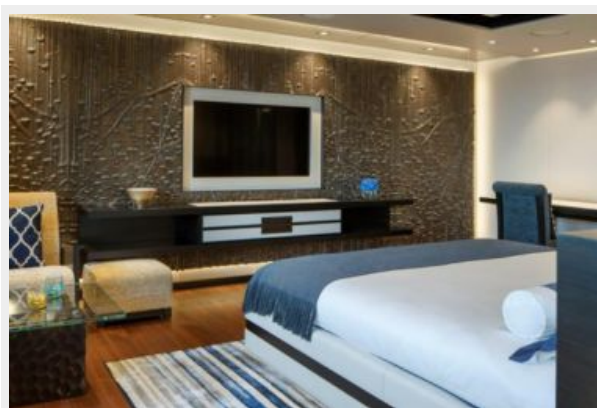
Maindeck Guest Corridor



VIP Stateroom



VIP Stateroom



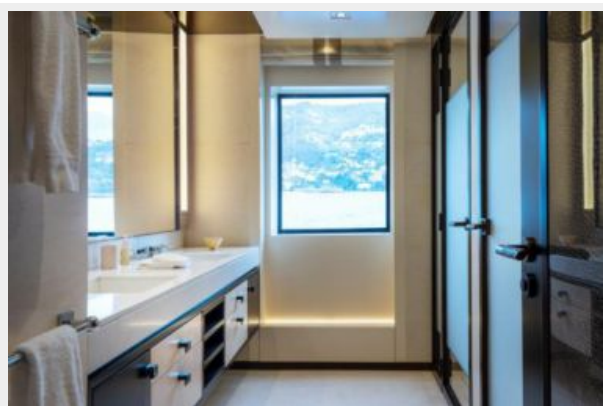
VIP Bath



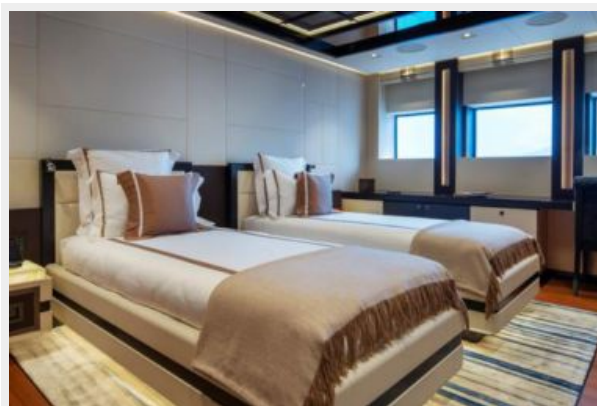
Guest Stateroom



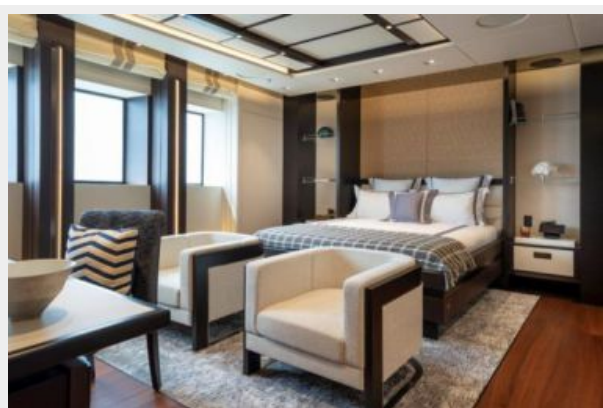
Guest Bath



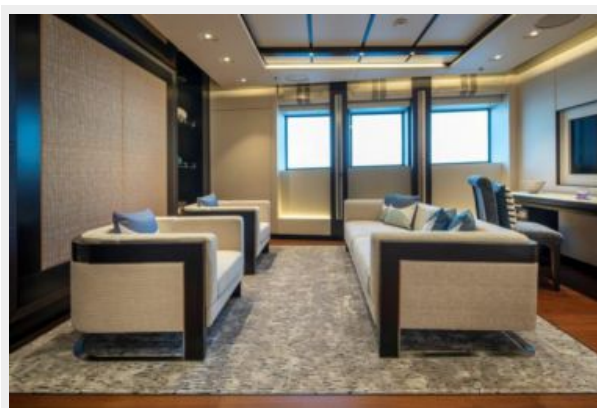
Twin Stateroom



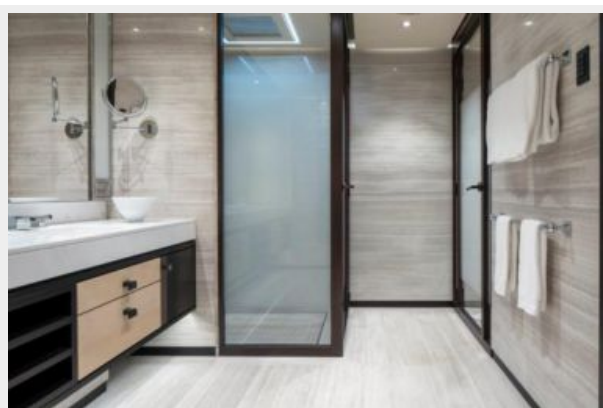
Guest Stateroom



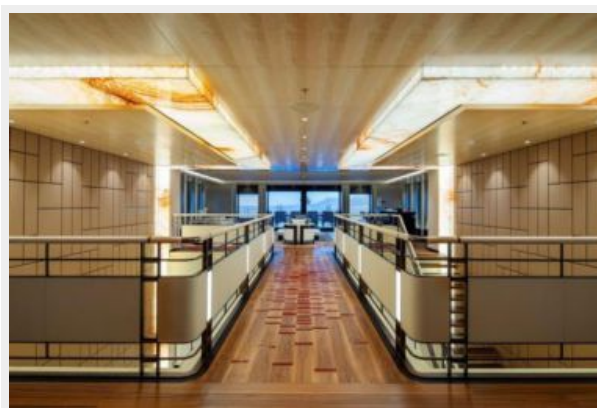
Guest Lounge



Guest Bath



Upperdeck Corridor



Upperdeck Salon



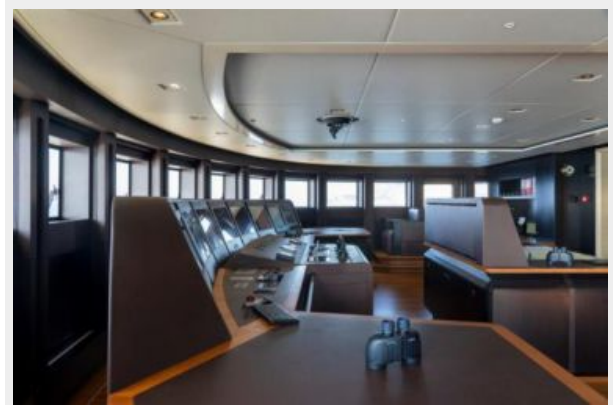
Upperdeck Salon



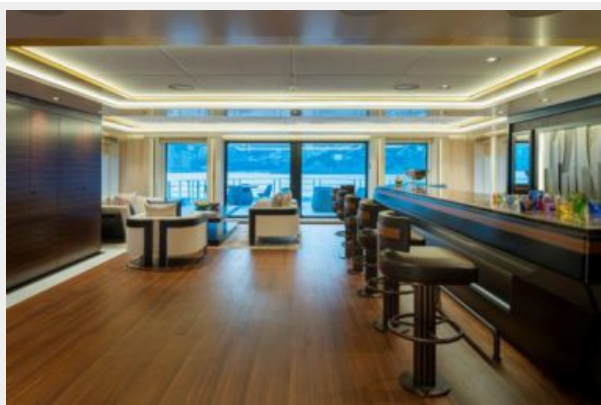
Upperdeck Tea Table



Bridge



Bridge Salon



Ocean Lounge



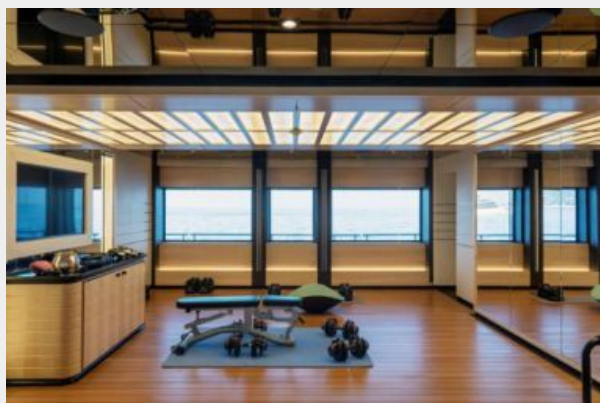
Upperdeck Dining Area



Beauty Salon



Gym



Interior Sundeck Lounge



Bridge Aft Deck



Sundeck Aft Deck



Master Balcony



Upper Aft Deck



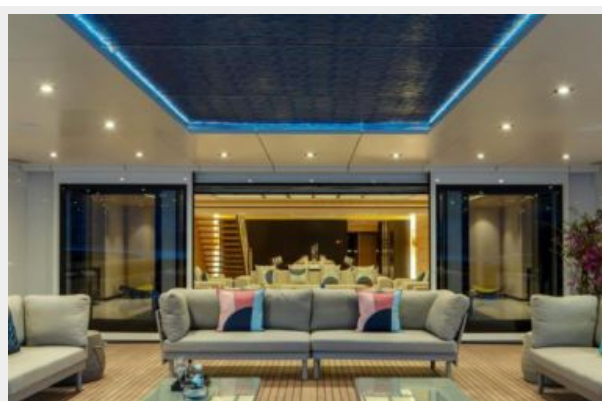
Upper Aft Deck



Maindeck and Swimming Pool



Aft Deck



Spa



Spa



Spa



Stern



Tender Garage



Port Bow Profile



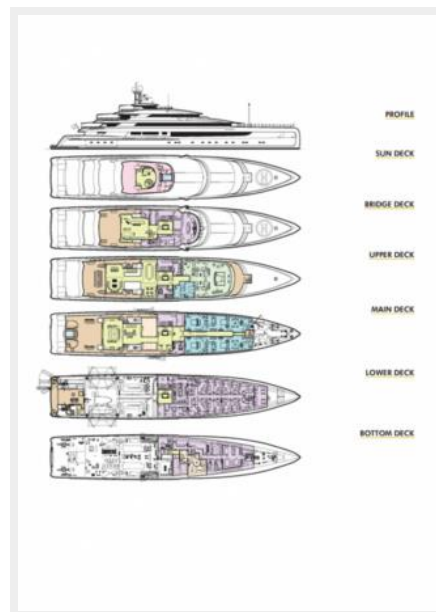
Stern and Tender



Aerial Profile



ILLUSION PLUS Layout



КОНТАКТЫ

Андрей Шестаков (Andrey Shestakov) – ведущий яхтенный брокер отдела продаж яхт и судов компании Shestakov Yacht Sales Inc. Официальный представитель Shestakov Yacht Sales Inc. для русскоговорящих клиентов в центральном офисе компании в Майами/Форт Лодердейл/Флорида/США.

Контактная информация

Email: andrey@shestakovyachtsales.com

Web: shestakovyachtsales.com

Телефоны

Краснодарский край: **+7(918)465-66-44**

США, Майами, Флорида: **+1(954)274-4435**

Время работы

Понедельник – Суббота: **9:00 - 21:00**
EDT

Воскресенье: **Закрито**

Адрес



Harbour Towne Marina, 850 NE 3rd St,
STE 213, Dania, FL 33004