

MISS ADVENTURE — MAINSHIP



Builder: MAINSHIP

Year Built: 1999

Model: Trawler

Price: PRICE ON APPLICATION

Location: United States

LOA: 35' 0" (10.67m)

Beam: 14' 6" (4.42m)

Max Draft: 3' 8" (1.12m)

Cruise Speed: 8 Kts. (9 MPH)

Max Speed: 12 Kts. (14 MPH)

Our experienced yacht broker, Andrey Shestakov, will help you choose and buy a yacht that best suits your needs **Miss Adventure — MAINSHIP** from our catalogue. Presently, at Shestakov Yacht Sales Inc., we have a wide variety of yachts available on our sale's list. We also work in close contact with all the big yacht manufacturers from all over the world.

If you would like to buy a yacht **Miss Adventure — MAINSHIP** or would like help answering any questions concerning purchasing, selling or chartering a yacht, please call **+1(954)274-4435**

TABLE OF CONTENTS

TABLE OF CONTENTS	2
SPECIFICATIONS	6
Overview	6
Basic Information	6
Dimensions	6
Speed, Capacities and Weight	6
Accommodations	6
Hull and Deck Information	6
Engine Information	7
DETAILED INFORMATION	8
MAIN DESCRIPTION	8
MANUFACTURES DESCRIPTION	8
MAINSHIP 350 WALK THROUGH	8
Galley	8
Accommodations	9
UPDATES	9
EXCLUSIONS	9
DISCLAIMER	9
Exclusions	9
Disclaimer	9
PHOTOS	10
3 Miss Adventure 1999 Mainship 350 front view	10
4 Miss Adventure 1999 Mainship 350 Aft View	10
5 Miss Adventure 1999 Mainship 350 Port Catwalkjpg	10
6 Miss Adventure 1999 Mainship 350 Starboard Catwalk	10
7 Miss Adventure 1999 Mainship 350 molded fiberglass stairs_6378	11
8 Miss Adventure 1999 Mainship 350 molded fiberglass stairs 2	11
9 Miss Adventure 1999 Mainship 350 Flybridge 3	11

10 Miss Adventure 1999 Mainship 350 Aft Flybridge	11
11 Miss Adventure 1999 Mainship 350 Davit System	12
12 Miss Adventure 1999 Mainship 350 Avon Dinghy	12
14 Miss Adventure 1999 Mainship 350 Flybridge 5	12
13 Miss Adventure 1999 Mainship 350 Flybridge 1	12
16 Miss Adventure 1999 Mainship 350 upper helm	13
15 Miss Adventure 1999 Mainship 350 Upper Helm 1	13
17 Miss Adventure 1999 Mainship 350 upper helm 2	13
18 Miss Adventure 1999 Mainship 350 upper helm 3	13
19 Miss Adventure 1999 Mainship 350 upper helm 4	14
20 Miss Adventure 1999 Mainship 350 Upper Helm Auto Pilot	14
22 Miss Adventure 1999 Mainship 350 upper helm gauges	14
21 Miss Adventure 1999 Mainship 350 upper helm bow thruster	14
23 Miss Adventure 1999 Mainship 350 Upper Helm Hour Meter	15
24 Miss Adventure 1999 Mainship 350 Upper Helm VHF	15
25 Miss Adventure 1999 Mainship 350 Upper Helm Chart Plotter	15
26 Miss Adventure 1999 Mainship 350 salon 2	15
28 Miss Adventure 1999 Mainship 350 Salon seating	16
27 Miss Adventure 1999 Mainship 350 Salon 1	16
29 Miss Adventure 1999 Mainship 350 Starboard side salon	16
30 Miss Adventure 1999 Mainship 350 salon aft view	16
31 Miss Adventure 1999 Mainship 350 salon aft view 2	16
32 Miss Adventure 1999 Mainship 350 Port side salon	16
34 Miss Adventure 1999 Mainship 350 Galley stove	17
33 Miss Adventure 1999 Mainship 350 Galley	17
36 Miss Adventure 1999 Mainship 350 lower helm 1	17
35 Miss Adventure 1999 Mainship 350 Lower Helm 2	17
37 Miss Adventure 1999 Mainship 350 lower helm 3	18
38 Miss Adventure 1999 Mainship 350 lower helm 4	18

39 Miss Adventure 1999 Mainship 350 lower helm auto helm	18
40 Miss Adventure 1999 Mainship 350 lower helm GPS	18
40.1 Miss Adventure 1999 Mainship 350 bowthruster and autopilot control	19
40.2 Miss Adventure 1999 Mainship 350 Kenwood Stereo	19
41 Miss Adventure 1999 Mainship 350 Salon desk space	19
42 Miss Adventure 1999 Mainship 350 electric panel	19
43 Miss Adventure 1999 Mainship 350 Cabin entryway	20
44 Miss Adventure 1999 Mainship 350 Fwd Stateroom 2	20
45 Miss Adventure 1999 Mainship 350 Fwd Stateroom 6	20
44.1 Miss Adventure 1999 Mainship 350 Forward Stateroom	20
46 Miss Adventure 1999 Mainship 350 Fwd Stateroom 4	20
47 Miss Adventure 1999 Mainship 350 Fwd Stateroom 5	20
48 Miss Adventure 1999 Mainship 350 Guest Stateroom 1	21
48.1 Miss Adventure 1999 Mainship 350 Guestroom 2	21
52 Miss Adventure 1999 Mainship 350 generator	21
49 Miss Adventure 1999 Mainship 350 Head	21
53 Miss Adventure 1999 Mainship 350 generator 2	22
54 Miss Adventure 1999 Mainship 350 generator hours	22
55 Miss Adventure 1999 Mainship 350 lazerette storage	22
56 Miss Adventure 1999 Mainship 350 engine room 3	22
58 Miss Adventure 1999 Mainship 350 engine room 1	23
57 Miss Adventure 1999 Mainship 350 engine room 9	23
59 Miss Adventure 1999 Mainship 350 engine room 2	23
60 Miss Adventure 1999 Mainship 350 engine room 4	23
61 Miss Adventure 1999 Mainship 350 engine room 5	24
62 Miss Adventure 1999 Mainship 350 engine room 6	24
63 Miss Adventure 1999 Mainship 350 engine room 7	24
64 Miss Adventure 1999 Mainship 350 engine room 8	24
65 Miss Adventure 1999 Mainship 350 engine room 10	25

66 Miss Adventure 1999 Mainship 350 engine room 11	25
67 Miss Adventure 1999 Mainship 350 engine room 12	25
68 Miss Adventure 1999 Mainship 350 engine room 13	25
69 Miss Adventure 1999 Mainship 350 engine specifications 2	26
70 Miss Adventure 1999 Mainship 350 logo	26
CONTACTS	27
Contact details	27
Telephones	27
Office hours	27
Address	27

SPECIFICATIONS

Overview

A recent Great Loop Veteran she is LOOP READY and eager to go again. Owners have decided to change things up and sell this beauty. Her cockpit entry makes her easy to board and the molded fiberglass stairs are a sought after feature. She has custom covers over her Flybridge seating to keep the upholstery in good shape. Very little wear and tear for a 20 year old boat.

Basic Information

Category: Trawler

Model Year: 1999

Year Built: 1999

Country: United States

Dimensions

LOA: 35' 0" (10.67m)

Beam: 14' 6" (4.42m)

Max Draft: 3' 8" (1.12m)

Clearance: 18' 8" (5.69m)

Speed, Capacities and Weight

Cruise Speed: 8 Kts. (9 MPH)

Max Speed: 12 Kts. (14 MPH)

Water Capacity: 130 Gallons

Holding Tank: 30 Gallons

Fuel Capacity: 300 Gallons

Accommodations

Total Cabins: 2

Total Heads: 1

Hull and Deck Information

Hull Material: Fiberglass

Engine Information

Engines: 1

Manufacturer: CAT

Model: 3116

Engine Type: Inboard

Fuel Type: Diesel

DETAILED INFORMATION

MAIN DESCRIPTION

A recent Great Loop Veteran she is LOOP READY and eager to go again. Owners have decided to change things up and sell this beauty. Her cockpit entry makes her easy to board and the molded fiberglass stairs are a sought after feature. She has custom covers over her Flybridge seating to keep the upholstery in good shape. Very little wear and tear for a 20 year old boat.

MANUFACTURES DESCRIPTION

The Mainship 350 Trawler features a large uncluttered Flybridge with plentiful seating and storage. Wide molded fiberglass steps replace the standard ladders on the 350, offering safety and comfort. Bridge walk-through along with oversized handrails and raised toe rails add to safety. Belowdecks are custom cabinetry, thick pile carpeting and the finest in fabrics. A spacious salon, workable galley, easy to maintain heads and truly comfortable staterooms are incorporated to provide good flow and the most usable space afloat. Mainship motor yachts, part of the Luther's marine group, is dedicated to bringing the best in design, comfort safety and reliability. Mainship manufacturing processes include fabrication onsite of many components such as hard tops, rails, furniture and wiring, providing high-quality, prompt delivery and a lower price at the dealer. Mainship five-year protection plan is one of the best in the industry including a transferable limited hull warranty.

MAINSHIP 350 WALK THROUGH

Access to the cockpit can be obtained via the swim platform and transom door or over the gunwales and down a few steps on either side of the cockpit or forward on the starboard side to the lower helm wind door. The forward deck can be reached from the cockpit via comfortable walkways on port and starboard. Once in the cockpit, a sliding door leads to the salon and a molded fiberglass staircase to starboard leads up to the spacious Flybridge. Access to the salon is made easy through the large, sliding glass door in the cockpit. Once inside the salon, the L shaped galley is to port, the companionway to the staterooms is centered forward and the lower helm, seating, and a desk are to starboard. Down the companionway the staterooms are laid out with the guest cabin to port, head to starboard, and master cabin forward in the bow. On the Flybridge you will find a large open deck aft and forward with guest seats flanking an expandable table aft of the captain's chair and helm. Engine access is through large hatches in the salon.

Galley

The galley features...3 Burner Electric Range/ovenMicrowaveSpice RackNova Kool 3/4 height Fridge/freezer upright comboCorian Countertops

Accommodations

Master Stateroom Centerline walk around island queen Reading lights Under bed storage drawers 2 hanging lockers 1 overhead hatch 2 Port lights Guest Stateroom Queen Berth 1 hanging locker 1 port light 1 overhead hatch

UPDATES

Bow Thruster Serviced 8/2019 Head Gasket 10/2019 Raymarine plotter and radar 01/2019 Bilge Pumps Blow By Box added Engine completely serviced 3 new 31 series batteries

EXCLUSIONS

Furniture on aft deck 2 teak folding chairs Linens and personal effects

DISCLAIMER

The Company offers the details of this vessel in good faith but cannot guarantee or warrant the accuracy of this information nor warrant the condition of the vessel. A buyer should instruct his agents, or his surveyors, to investigate such details as the buyer desires validated. This vessel is offered subject to prior sale, price change, or withdrawal without notice.

Exclusions

Owner's personal belongings.

Disclaimer

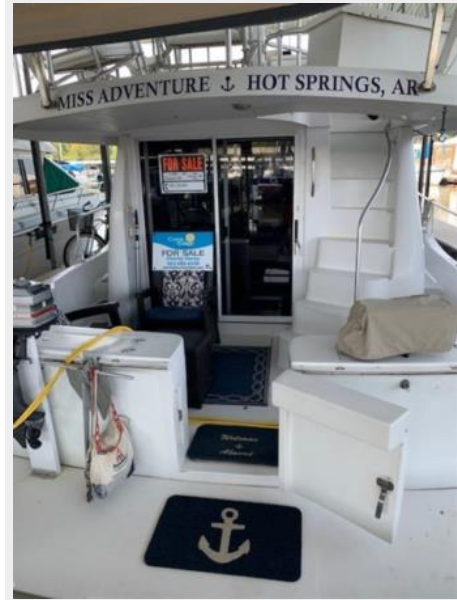
The Company offers the details of this vessel or yacht in good faith but cannot guarantee or warrant the accuracy of this information nor warrant the condition of the vessel. A buyer should instruct his representatives, agents, or his surveyors, to investigate such details as the buyer desires validated. This vessel or yacht is offered subject to prior sale, price change, or withdrawal without notice.

PHOTOS

3 Miss Adventure 1999 Mainship 350 front view



4 Miss Adventure 1999 Mainship 350 Aft View



5 Miss Adventure 1999 Mainship 350 Port Catwalk



6 Miss Adventure 1999 Mainship 350 Starboard Catwalk



7 Miss Adventure 1999 Mainship 350 molded fiberglass stairs_6378



9 Miss Adventure 1999 Mainship 350 Flybridge 3



10 Miss Adventure 1999 Mainship 350 Aft Flybridge



11 Miss Adventure 1999 Mainship 350 Davit System



12 Miss Adventure 1999 Mainship 350 Avon Dinghy



13 Miss Adventure 1999 Mainship 350 Flybridge 1



14 Miss Adventure 1999 Mainship 350 Flybridge 5



15 Miss Adventure 1999 Mainship 350 Upper Helm 1



16 Miss Adventure 1999 Mainship 350 upper helm



17 Miss Adventure 1999 Mainship 350 upper helm 2



18 Miss Adventure 1999 Mainship 350 upper helm 3



19 Miss Adventure 1999 Mainship 350 upper helm 4



22 Miss Adventure 1999 Mainship 350 upper helm gauges

21 Miss Adventure 1999 Mainship 350 upper helm bow thruster



**23 Miss Adventure 1999 Mainship 350 Upper
Helm Hour Meter**



**24 Miss Adventure 1999 Mainship 350 Upper
Helm VHF**



**25 Miss Adventure 1999 Mainship 350 Upper 26 Miss Adventure 1999 Mainship 350 salon
Helm Chart Plotter**



27 Miss Adventure 1999 Mainship 350 Salon
1



28 Miss Adventure 1999 Mainship 350 Salon
seating



29 Miss Adventure 1999 Mainship 350
Starboard side salon



30 Miss Adventure 1999 Mainship 350 salon
aft view



31 Miss Adventure 1999 Mainship 350 salon
aft view 2



32 Miss Adventure 1999 Mainship 350 Port
side salon



34 Miss Adventure 1999 Mainship 350 Galley stove



33 Miss Adventure 1999 Mainship 350 Galley



36 Miss Adventure 1999 Mainship 350 lower helm 1



35 Miss Adventure 1999 Mainship 350 Lower Helm 2



37 Miss Adventure 1999 Mainship 350 lower helm 3



38 Miss Adventure 1999 Mainship 350 lower helm 4



39 Miss Adventure 1999 Mainship 350 lower helm auto helm



40 Miss Adventure 1999 Mainship 350 lower helm GPS



**40.1 Miss Adventure 1999 Mainship 350
bowthruster and autopilot control**



**40.2 Miss Adventure 1999 Mainship 350
Kenwood Stereo**



**41 Miss Adventure 1999 Mainship 350 Salon
desk space**



**42 Miss Adventure 1999 Mainship 350
electric panel**



43 Miss Adventure 1999 Mainship 350 Cabin entryway



44 Miss Adventure 1999 Mainship 350 Fwd Stateroom 2



45 Miss Adventure 1999 Mainship 350 Fwd Stateroom 6

44.1 Miss Adventure 1999 Mainship 350 Forward Stateroom



46 Miss Adventure 1999 Mainship 350 Fwd Stateroom 4



47 Miss Adventure 1999 Mainship 350 Fwd Stateroom 5



**48 Miss Adventure 1999 Mainship 350 Guest
Stateroom 1**



**48.1 Miss Adventure 1999 Mainship 350
Guestroom 2**



49 Miss Adventure 1999 Mainship 350 Head



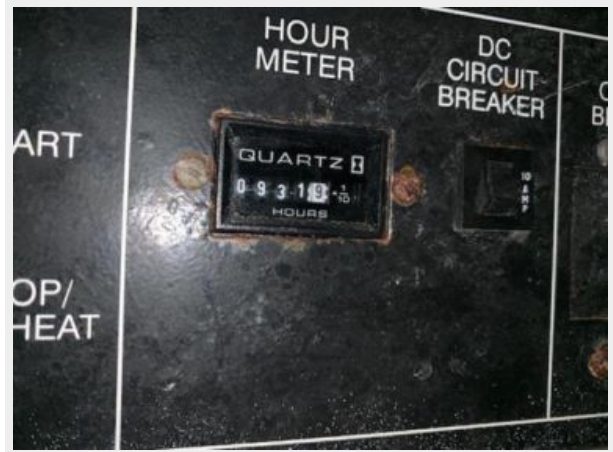
**52 Miss Adventure 1999 Mainship 350
generator**



53 Miss Adventure 1999 Mainship 350 generator 2



54 Miss Adventure 1999 Mainship 350 generator hours



55 Miss Adventure 1999 Mainship 350 lazarette storage



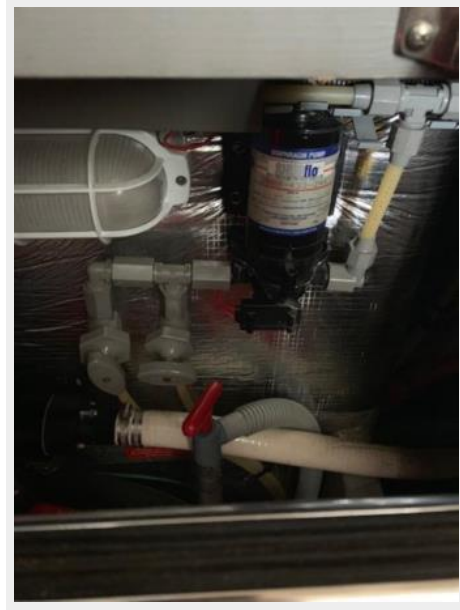
56 Miss Adventure 1999 Mainship 350 engine room 3



**57 Miss Adventure 1999 Mainship 350
engine room 9**



**58 Miss Adventure 1999 Mainship 350
engine room 1**



**59 Miss Adventure 1999 Mainship 350
engine room 2**



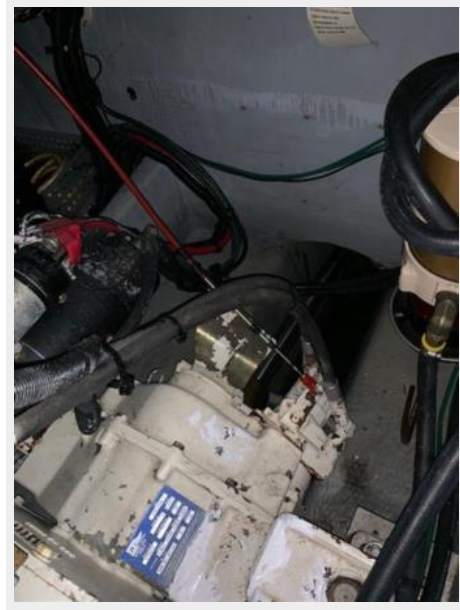
**60 Miss Adventure 1999 Mainship 350
engine room 4**



**61 Miss Adventure 1999 Mainship 350
engine room 5**



**62 Miss Adventure 1999 Mainship 350
engine room 6**



**63 Miss Adventure 1999 Mainship 350
engine room 7**



**64 Miss Adventure 1999 Mainship 350
engine room 8**



**65 Miss Adventure 1999 Mainship 350
engine room 10**



**66 Miss Adventure 1999 Mainship 350
engine room 11**



**67 Miss Adventure 1999 Mainship 350
engine room 12**



**68 Miss Adventure 1999 Mainship 350
engine room 13**



69 Miss Adventure 1999 Mainship 350 engine specifications 2



70 Miss Adventure 1999 Mainship 350 logo



CONTACTS

Andrey Shestakov, leading yacht broker of the sales department of Shestakov Yacht Sales Inc. Shestakov Yacht Sales Inc., the official representative of the Miami/Fort Lauderdale FL headquarters.

Contact details

Email: andrey@shestakovyachtsales.com

Web: shestakovyachtsales.com/en/

Telephones

USA: +1(954)274-4435

Office hours

Monday – Saturday: **9:00 - 21:00** EDT

Sunday: **closed**

Address



Harbour Towne Marina, 850 NE 3rd St,
STE 213, Dania, FL 33004