

## MISS ADVENTURE — MAINSHIP



**Судостроитель:** MAINSHIP

**Год постройки:** 1999

**Модель:** Траулер

**Цена:** **ЦЕНА ЯХТЫ ПО ЗАПРОСУ**

**Местонахождение:** United States

**Длина общая:** 35' 0" (10.67m)

**Ширина:** 14' 6" (4.42m)

**Макс. осадка:** 3' 8" (1.12m)

**Крейс. скорость:** 8 Kts. (9 MPH)

**Макс. скорость:** 12 Kts. (14 MPH)

Купить **Miss Adventure — MAINSHIP** а также выбрать подходящую вам яхту из нашего каталога яхт вам поможет опытный яхтенный брокер Андрей Шестаков. На сегодняшний день компания **Shestakov Yacht Sales Inc.** имеет большое количество яхт в собственном списке продаж, а также тесно сотрудничает со всеми крупными яхтенными производителями по всему миру.

Для того чтобы купить яхту **Miss Adventure — MAINSHIP** а также проконсультироваться по любому вопросу связанному с покупкой, продажей, чартером яхт позвоните по телефону **+7(918)465-66-44**.

# ОГЛАВЛЕНИЕ

ОГЛАВЛЕНИЕ	2
ХАРАКТЕРИСТИКИ	6
Обзор	6
Основная информация	6
Размеры	6
Скорость, вместимость и масса	6
Размещение	6
Корпус и палуба	6
Информация о двигателе	7
ПОДРОБНОЕ ОПИСАНИЕ	8
MAIN DESCRIPTION	8
MANUFACTURES DESCRIPTION	8
MAINSHIP 350 WALK THROUGH	8
Galley	8
Accommodations	9
UPDATES	9
EXCLUSIONS	9
DISCLAIMER	9
Исключения	9
Отказ от ответственности	9
ФОТОГРАФИИ	10
3 Miss Adventure 1999 Mainship 350 front view	10
4 Miss Adventure 1999 Mainship 350 Aft View	10
5 Miss Adventure 1999 Mainship 350 Port Catwalkjpg	10
6 Miss Adventure 1999 Mainship 350 Starboard Catwalk	10
7 Miss Adventure 1999 Mainship 350 molded fiberglass stairs_6378	11
8 Miss Adventure 1999 Mainship 350 molded fiberglass stairs 2	11
9 Miss Adventure 1999 Mainship 350 Flybridge 3	11

10 Miss Adventure 1999 Mainship 350 Aft Flybridge	11
11 Miss Adventure 1999 Mainship 350 Davit System	12
12 Miss Adventure 1999 Mainship 350 Avon Dinghy	12
14 Miss Adventure 1999 Mainship 350 Flybridge 5	12
13 Miss Adventure 1999 Mainship 350 Flybridge 1	12
16 Miss Adventure 1999 Mainship 350 upper helm	13
15 Miss Adventure 1999 Mainship 350 Upper Helm 1	13
17 Miss Adventure 1999 Mainship 350 upper helm 2	13
18 Miss Adventure 1999 Mainship 350 upper helm 3	13
19 Miss Adventure 1999 Mainship 350 upper helm 4	14
20 Miss Adventure 1999 Mainship 350 Upper Helm Auto Pilot	14
22 Miss Adventure 1999 Mainship 350 upper helm gauges	14
21 Miss Adventure 1999 Mainship 350 upper helm bow thruster	14
23 Miss Adventure 1999 Mainship 350 Upper Helm Hour Meter	15
24 Miss Adventure 1999 Mainship 350 Upper Helm VHF	15
25 Miss Adventure 1999 Mainship 350 Upper Helm Chart Plotter	15
26 Miss Adventure 1999 Mainship 350 salon 2	15
28 Miss Adventure 1999 Mainship 350 Salon seating	16
27 Miss Adventure 1999 Mainship 350 Salon 1	16
29 Miss Adventure 1999 Mainship 350 Starboard side salon	16
30 Miss Adventure 1999 Mainship 350 salon aft view	16
31 Miss Adventure 1999 Mainship 350 salon aft view 2	16
32 Miss Adventure 1999 Mainship 350 Port side salon	16
34 Miss Adventure 1999 Mainship 350 Galley stove	17
33 Miss Adventure 1999 Mainship 350 Galley	17
36 Miss Adventure 1999 Mainship 350 lower helm 1	17
35 Miss Adventure 1999 Mainship 350 Lower Helm 2	17
37 Miss Adventure 1999 Mainship 350 lower helm 3	18
38 Miss Adventure 1999 Mainship 350 lower helm 4	18

---

39 Miss Adventure 1999 Mainship 350 lower helm auto helm	18
40 Miss Adventure 1999 Mainship 350 lower helm GPS	18
40.1 Miss Adventure 1999 Mainship 350 bowthruster and autopilot control	19
40.2 Miss Adventure 1999 Mainship 350 Kenwood Stereo	19
41 Miss Adventure 1999 Mainship 350 Salon desk space	19
42 Miss Adventure 1999 Mainship 350 electric panel	19
43 Miss Adventure 1999 Mainship 350 Cabin entryway	20
44 Miss Adventure 1999 Mainship 350 Fwd Stateroom 2	20
45 Miss Adventure 1999 Mainship 350 Fwd Stateroom 6	20
44.1 Miss Adventure 1999 Mainship 350 Forward Stateroom	20
46 Miss Adventure 1999 Mainship 350 Fwd Stateroom 4	20
47 Miss Adventure 1999 Mainship 350 Fwd Stateroom 5	20
48 Miss Adventure 1999 Mainship 350 Guest Stateroom 1	21
48.1 Miss Adventure 1999 Mainship 350 Guestroom 2	21
52 Miss Adventure 1999 Mainship 350 generator	21
49 Miss Adventure 1999 Mainship 350 Head	21
53 Miss Adventure 1999 Mainship 350 generator 2	22
54 Miss Adventure 1999 Mainship 350 generator hours	22
55 Miss Adventure 1999 Mainship 350 lazette storage	22
56 Miss Adventure 1999 Mainship 350 engine room 3	22
58 Miss Adventure 1999 Mainship 350 engine room 1	23
57 Miss Adventure 1999 Mainship 350 engine room 9	23
59 Miss Adventure 1999 Mainship 350 engine room 2	23
60 Miss Adventure 1999 Mainship 350 engine room 4	23
61 Miss Adventure 1999 Mainship 350 engine room 5	24
62 Miss Adventure 1999 Mainship 350 engine room 6	24
63 Miss Adventure 1999 Mainship 350 engine room 7	24
64 Miss Adventure 1999 Mainship 350 engine room 8	24
65 Miss Adventure 1999 Mainship 350 engine room 10	25

---

---

66 Miss Adventure 1999 Mainship 350 engine room 11	25
67 Miss Adventure 1999 Mainship 350 engine room 12	25
68 Miss Adventure 1999 Mainship 350 engine room 13	25
69 Miss Adventure 1999 Mainship 350 engine specifications 2	26
70 Miss Adventure 1999 Mainship 350 logo	26
<b>КОНТАКТЫ</b>	<b>27</b>
Контактная информация	27
Телефоны	27
Время работы	27
Адрес	27

# ХАРАКТЕРИСТИКИ

## Обзор

A recent Great Loop Veteran she is LOOP READY and eager to go again. Owners have decided to change things up and sell this beauty. Her cockpit entry makes her easy to board and the molded fiberglass stairs are a sought after feature. She has custom covers over her Flybridge seating to keep the upholstery in good shape. Very little wear and tear for a 20 year old boat.

## Основная информация

Тип судна: Траулер

Модельный год: 1999

Год постройки: 1999

Страна: United States

## Размеры

Длина общая: 35' 0" (10.67m)

Ширина: 14' 6" (4.42m)

Макс. осадка: 3' 8" (1.12m)

Трапы: 18' 8" (5.69m)

## Скорость, вместимость и масса

Крейс. скорость: 8 Kts. (9 MPH)

Макс. скорость: 12 Kts. (14 MPH)

Вместимость воды: 130 Gallons

Вместимость сточного бака: 30 Gallons

Объем топливного бака: 300 Gallons

## Размещение

Всего кают: 2

Всего ком. состава: 1

## Корпус и палуба

Материал корпуса: Fiberglass

## Информация о двигателе

---

**Двигатели:** 1

**Производитель:** CAT

**Модель:** 3116

**Тип двигателя:** Inboard

**Тип топлива:** Diesel

---

# ПОДРОБНОЕ ОПИСАНИЕ

---

## MAIN DESCRIPTION

---

A recent Great Loop Veteran she is LOOP READY and eager to go again. Owners have decided to change things up and sell this beauty. Her cockpit entry makes her easy to board and the molded fiberglass stairs are a sought after feature. She has custom covers over her Flybridge seating to keep the upholstery in good shape. Very little wear and tear for a 20 year old boat.

## MANUFACTURES DESCRIPTION

---

The Mainship 350 Trawler features a large uncluttered Flybridge with plentiful seating and storage. Wide molded fiberglass steps replace the standard ladders on the 350, offering safety and comfort. Bridge walk-through along with oversized handrails and raised toe rails add to safety. Belowdecks are custom cabinetry, thick pile carpeting and the finest in fabrics. A spacious salon, workable galley, easy to maintain heads and truly comfortable staterooms are incorporated to provide good flow and the most usable space afloat. Mainship motor yachts, part of the Luther's marine group, is dedicated to bringing the best in design, comfort safety and reliability. Mainship manufacturing processes include fabrication onsite of many components such as hard tops, rails, furniture and wiring, providing high-quality, prompt delivery and a lower price at the dealer. Mainship five-year protection plan is one of the best in the industry including a transferable limited hull warranty.

## MAINSHIP 350 WALK THROUGH

---

Access to the cockpit can be obtained via the swim platform and transom door or over the gunwales and down a few steps on either side of the cockpit or forward on the starboard side to the lower helm wind door. The forward deck can be reached from the cockpit via comfortable walkways on port and starboard. Once in the cockpit, a sliding door leads to the salon and a molded fiberglass staircase to starboard leads up to the spacious Flybridge. Access to the salon is made easy through the large, sliding glass door in the cockpit. Once inside the salon, the L shaped galley is to port, the companionway to the staterooms is centered forward and the lower helm, seating, and a desk are to starboard. Down the companionway the staterooms are laid out with the guest cabin to port, head to starboard, and master cabin forward in the bow. On the Flybridge you will find a large open deck aft and forward with guest seats flanking an expandable table aft of the captain's chair and helm. Engine access is through large hatches in the salon.

## Galley

---

The galley features...3 Burner Electric Range/oven Microwave Spice Rack Nova Kool 3/4 height Fridge/freezer upright combo Corian Countertops



---

## Accommodations

---

Master Stateroom Centerline walk around island queen Reading lights Under bed storage drawers 2 hanging lockers 1 overhead hatch 2 Port lights Guest Stateroom Queen Berth 1 hanging locker 1 port light 1 overhead hatch

---

## UPDATES

---

Bow Thruster Serviced 8/2019 Head Gasket 10/2019 Raymarine plotter and radar 01/2019 Bilge Pumps Blow By Box added Engine completely serviced 3 new 31 series batteries

---

## EXCLUSIONS

---

Furniture on aft deck 2 teak folding chairs Linens and personal effects

---

## DISCLAIMER

---

The Company offers the details of this vessel in good faith but cannot guarantee or warrant the accuracy of this information nor warrant the condition of the vessel. A buyer should instruct his agents, or his surveyors, to investigate such details as the buyer desires validated. This vessel is offered subject to prior sale, price change, or withdrawal without notice.

---

## Исключения

---

При продаже яхты исключаются личные вещи владельца.

---

## Отказ от ответственности

---

Компания предоставляет описание судна или яхты добросовестно, но не может гарантировать точность этой информации, а также не ручается за техническое состояние. Покупатель должен проинструктировать своих агентов или оценщиков исследовать представленную информацию более подробно, по собственному желанию. Продажа судна или яхты, изменение цены или снятие с продажи будет происходить без предварительного уведомления.

# ФОТОГРАФИИ

**3 Miss Adventure 1999 Mainship 350 front view**



**4 Miss Adventure 1999 Mainship 350 Aft View**



**5 Miss Adventure 1999 Mainship 350 Port Catwalkjpg**



**6 Miss Adventure 1999 Mainship 350 Starboard Catwalk**



**7 Miss Adventure 1999 Mainship 350 molded fiberglass stairs\_6378**



**9 Miss Adventure 1999 Mainship 350 Flybridge 3**



**10 Miss Adventure 1999 Mainship 350 Aft Flybridge**



### 11 Miss Adventure 1999 Mainship 350 Davit System



### 12 Miss Adventure 1999 Mainship 350 Avon Dinghy



### 13 Miss Adventure 1999 Mainship 350 Flybridge 1



### 14 Miss Adventure 1999 Mainship 350 Flybridge 5



15 Miss Adventure 1999 Mainship 350 Upper Helm 1



16 Miss Adventure 1999 Mainship 350 upper helm



17 Miss Adventure 1999 Mainship 350 upper helm 2



18 Miss Adventure 1999 Mainship 350 upper helm 3



19 Miss Adventure 1999 Mainship 350 upper helm 4  
20 Miss Adventure 1999 Mainship 350 Upper Helm Auto Pilot



21 Miss Adventure 1999 Mainship 350 upper helm bow thruster



22 Miss Adventure 1999 Mainship 350 upper helm gauges



**23 Miss Adventure 1999 Mainship 350 Upper  
Helm Hour Meter**



**24 Miss Adventure 1999 Mainship 350 Upper  
Helm VHF**



**25 Miss Adventure 1999 Mainship 350 Upper 26 Miss Adventure 1999 Mainship 350 salon  
Helm Chart Plotter**



27 Miss Adventure 1999 Mainship 350 Salon

1



28 Miss Adventure 1999 Mainship 350 Salon seating



29 Miss Adventure 1999 Mainship 350 Starboard side salon



30 Miss Adventure 1999 Mainship 350 salon aft view



31 Miss Adventure 1999 Mainship 350 salon aft view 2



32 Miss Adventure 1999 Mainship 350 Port side salon





**34 Miss Adventure 1999 Mainship 350 Galley stove**



**33 Miss Adventure 1999 Mainship 350 Galley**



**36 Miss Adventure 1999 Mainship 350 lower helm 1**



**35 Miss Adventure 1999 Mainship 350 Lower Helm 2**



37 Miss Adventure 1999 Mainship 350 lower helm 3



38 Miss Adventure 1999 Mainship 350 lower helm 4



39 Miss Adventure 1999 Mainship 350 lower helm auto helm



40 Miss Adventure 1999 Mainship 350 lower helm GPS



**40.1 Miss Adventure 1999 Mainship 350  
bowthruster and autopilot control**



**40.2 Miss Adventure 1999 Mainship 350  
Kenwood Stereo**



**41 Miss Adventure 1999 Mainship 350 Salon  
desk space**



**42 Miss Adventure 1999 Mainship 350  
electric panel**



**43 Miss Adventure 1999 Mainship 350 Cabin entryway**



**44 Miss Adventure 1999 Mainship 350 Fwd Stateroom 2**



**45 Miss Adventure 1999 Mainship 350 Fwd Stateroom 6**

**44.1 Miss Adventure 1999 Mainship 350 Forward Stateroom**



**46 Miss Adventure 1999 Mainship 350 Fwd Stateroom 4**



**47 Miss Adventure 1999 Mainship 350 Fwd Stateroom 5**



**48 Miss Adventure 1999 Mainship 350 Guest  
Stateroom 1**



**48.1 Miss Adventure 1999 Mainship 350  
Guestroom 2**



**49 Miss Adventure 1999 Mainship 350 Head**



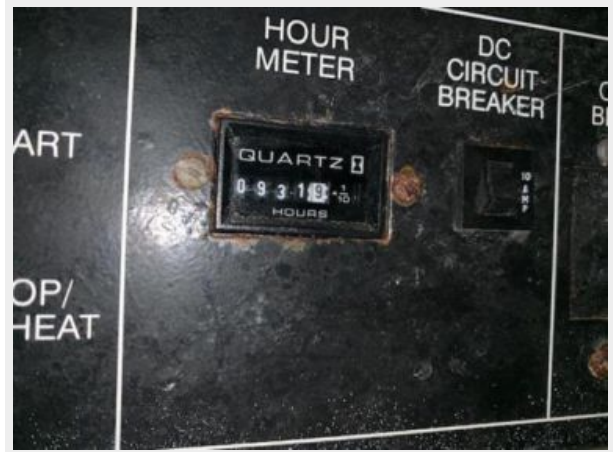
**52 Miss Adventure 1999 Mainship 350  
generator**



**53 Miss Adventure 1999 Mainship 350 generator 2**



**54 Miss Adventure 1999 Mainship 350 generator hours**



**55 Miss Adventure 1999 Mainship 350 lazarette storage**



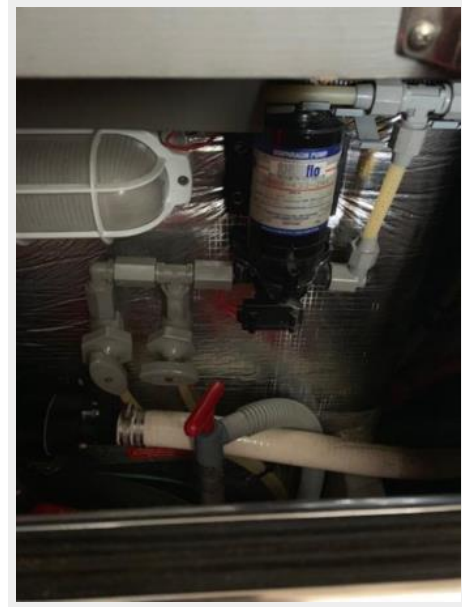
**56 Miss Adventure 1999 Mainship 350 engine room 3**



**57 Miss Adventure 1999 Mainship 350  
engine room 9**



**58 Miss Adventure 1999 Mainship 350  
engine room 1**



**59 Miss Adventure 1999 Mainship 350  
engine room 2**



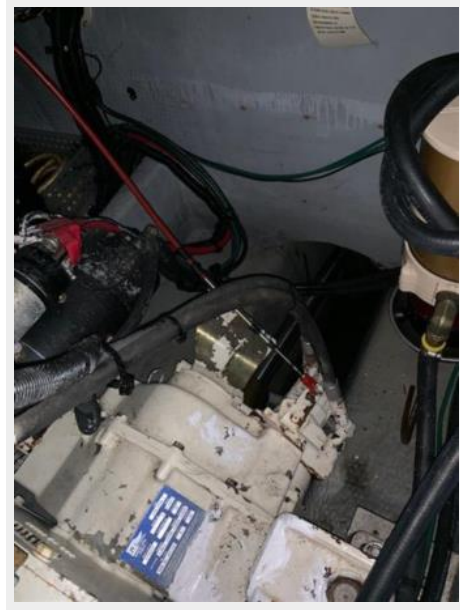
**60 Miss Adventure 1999 Mainship 350  
engine room 4**



**61 Miss Adventure 1999 Mainship 350  
engine room 5**



**62 Miss Adventure 1999 Mainship 350  
engine room 6**



**63 Miss Adventure 1999 Mainship 350  
engine room 7**



**64 Miss Adventure 1999 Mainship 350  
engine room 8**





**65 Miss Adventure 1999 Mainship 350  
engine room 10**



**66 Miss Adventure 1999 Mainship 350  
engine room 11**



**67 Miss Adventure 1999 Mainship 350  
engine room 12**



**68 Miss Adventure 1999 Mainship 350  
engine room 13**



## 69 Miss Adventure 1999 Mainship 350 engine specifications 2



## 70 Miss Adventure 1999 Mainship 350 logo



# КОНТАКТЫ

---

Андрей Шестаков (Andrey Shestakov) – ведущий яхтенный брокер отдела продаж яхт и судов компании Shestakov Yacht Sales Inc. Официальный представитель Shestakov Yacht Sales Inc. для русскоговорящих клиентов в центральном офисе компании в Майами/Форт Лодердейл/Флорида/США.

## Контактная информация

---

Email: [andrey@shestakovyachtsales.com](mailto:andrey@shestakovyachtsales.com)

Web: [shestakovyachtsales.com](http://shestakovyachtsales.com)

## Телефоны

---

Краснодарский край: **+7(918)465-66-44**

США, Майами, Флорида: **+1(954)274-4435**

## Время работы

---

Понедельник – Суббота: **9:00 - 21:00**  
EDT

Воскресенье: **Закрето**

## Адрес

---



Harbour Towne Marina, 850 NE 3rd St,  
STE 213, Dania, FL 33004