

PIER PRESSURE — BILLY HOLTON



Builder: BILLY HOLTON

Year Built: 2006

Model: Sport Yacht

Price: PRICE ON APPLICATION

Location: United States

LOA: 61' 0" (18.59m)

Cruise Speed: 33 Kts. (38 MPH)

Max Speed: 39 Kts. (45 MPH)

Our experienced yacht broker, Andrey Shestakov, will help you choose and buy a yacht that best suits your needs **Pier Pressure — BILLY HOLTON** from our catalogue. Presently, at Shestakov Yacht Sales Inc., we have a wide variety of yachts available on our sale's list. We also work in close contact with all the big yacht manufacturers from all over the world.

If you would like to buy a yacht **Pier Pressure — BILLY HOLTON** or would like help answering any questions concerning purchasing, selling or chartering a yacht, please call **+1(954)274-4435**

TABLE OF CONTENTS

TABLE OF CONTENTS	2
SPECIFICATIONS	7
Overview	7
Basic Information	7
Dimensions	7
Speed, Capacities and Weight	7
Accommodations	7
Hull and Deck Information	7
Engine Information	8
DETAILED INFORMATION	9
ABOUT	9
SPECIFICATIONS	9
SALESMAN'S REMARKS	12
EXCLUSIONS & DISCLAIMER	13
Exclusions	13
Disclaimer	13
PHOTOS	14
ExteriorProfile-4	14
ExteriorProfile-5	14
ExteriorProfile-6	14
ExteriorProfile-7	14
ExteriorStern 1	14
ExteriorProfile-8	14
ExteriorStern	15
ExteriorStern-2 - Copy	15
ExteriorStern-2	15
ExteriorStern-3	15
ExteriorStern-4	15

ExteriorStern-5	15
ExteriorStern-6	16
ExteriorStern-7	16
ExteriorStern-8	16
ExteriorStern-9	16
ExteriorStern-10	17
InteriorMain 1	17
InteriorMain	17
InteriorMain-2	17
InteriorMain-3	17
InteriorMain-4	17
InteriorMain-5	18
InteriorMain-6	18
InteriorMain-8	18
InteriorMain-7	18
InteriorMain-10	18
InteriorMain-9	18
InteriorMain-11	19
InteriorMain-12	19
InteriorRooms	19
InteriorMain-13	19
InteriorRooms-3	20
InteriorRooms-2	20
InteriorRooms-4	20
InteriorRooms-5	20
InteriorRooms-7	21
InteriorRooms-6	21
InteriorRooms-9	21
InteriorRooms-8	21

InteriorRooms-10	22
InteriorRooms-11	22
InteriorRooms-12	22
InteriorRooms-13	22
InteriorRooms-14	23
InteriorRooms-15	23
InteriorRooms-16	23
InteriorRooms-17	23
InteriorRooms-18	24
InteriorRooms-19	24
InteriorRooms-20	24
PPControlDeck	24
PPControlDeck-2	24
PPControlDeck-3	24
PPControlDeck-4	25
PPControlDeck-5	25
PPControlDeck-6	25
PPControlDeck-7	25
PPControlDeck-8	25
PPControlDeck-9	25
PPControlDeck-10	26
PPControlDeck-11	26
PPControlDeck-12	26
PPControlDeck-13	26
PPControlDeck-14	26
PPControlDeck-15	26
PPControlDeck-17	27
PPControlDeck-16	27
PPEngineRoom (1)	27

PPEngineRoom	27
PPEngineRoom-2 (1)	27
PPEngineRoom-2	27
PPEngineRoom-3 (1)	28
PPEngineRoom-3	28
PPEngineRoom-4 (1)	28
PPEngineRoom-4	28
PPEngineRoom-5 (1)	28
PPEngineRoom-5	28
PPEngineRoom-6 (1)	29
PPEngineRoom-6	29
PPEngineRoom-7 (1)	29
PPEngineRoom-7	29
PPEngineRoom-8 (1)	29
PPEngineRoom-8	29
PPEngineRoom-9 (1)	30
PPEngineRoom-9	30
PPEngineRoom-10 (1)	30
PPEngineRoom-10	30
PPEngineRoom-11 (1)	30
PPEngineRoom-11	30
PPEngineRoom-12 (1)	31
PPEngineRoom-12	31
PPEngineRoom-13 (1)	31
PPEngineRoom-13	31
PPEngineRoom-14 (1)	31
PPEngineRoom-14	31
PPEngineRoom-15 (1)	32
PPEngineRoom-15	32

PPEngineRoom-16 (1)	32
PPEngineRoom-16	32
PPEngineRoom-17 (1)	32
PPEngineRoom-17	32
PPEngineRoom-18 (1)	33
PPEngineRoom-18	33
PPEngineRoom-19 (1)	33
PPEngineRoom-19	33
PPEngineRoom-20 (1)	33
PPEngineRoom-20	33
PPEngineRoom-21 (1)	34
PPEngineRoom-21	34
PPEngineRoom-22 (1)	34
PPEngineRoom-22	34
PPEngineRoom-23 (1)	34
PPEngineRoom-23	34
PPEngineRoom-24 (1)	35
PPEngineRoom-24	35
CONTACTS	36
Contact details	36
Telephones	36
Office hours	36
Address	36

SPECIFICATIONS

Overview

A meticulously pampered low original owner custom sportfish built by one the premiere builders in North Carolina. Billy Holton is regarded as a premier custom designer/builder with an eye for modern yet classic lines. "Pier Pressure" is pampered by her original owner and has received excellent care with only 293 original hours on her C-30 Cats. She received a full hull & topside paint job in 2018.

Basic Information

Category: Sport Yacht

Sub Category: Convertible

Model Year: 2006

Year Built: 2006

Country: United States

Dimensions

LOA: 61' 0" (18.59m)

Speed, Capacities and Weight

Cruise Speed: 33 Kts. (38 MPH)

Max Speed: 39 Kts. (45 MPH)

Accommodations

Total Cabins: 2

Total Heads: 2

Hull and Deck Information

Hull Material: Composite

Engine Information

Engines: 2

Manufacturer: CAT

DETAILED INFORMATION

ABOUT

A meticulously pampered, low hour, original owner custom sportfish built by one the premiere builders in North Carolina. Billy Holton is regarded as a premier custom designer/builder with an eye for modern yet classic lines. "Pier Pressure" is pampered by her original owner and has received excellent care with only 293 original hours on her C-30 Cats. She received a full hull & topside paint job in 2018.

SPECIFICATIONS

ACCOMMODATIONS

Pier Pressure features a large and beamy salon, with much more.

- Large profile galley with drawer refrigerators and freezers
- Amid ship master stateroom to port with ensuite head and shower
- Guest stateroom with large upper berth and a single lower berth, guest head with stall shower
- Starboard crew quarters with raised single berth and tons of storage

SALON

Entire interior finish work and craftsmanship are top notch. The salon is roomy and spacious with beautiful Cherry Wood finishes throughout

- L-shaped settee
- Table Hi-Low Cherry Wood Release Marine
- TV Sony 40" flat screen on lift
- Entertainment center
- Recessed speakers
- Recessed lighting with dimmers

GALLEY

Located forward to port with a booth dinette to starboard. Teak and Holly soles in galley and dinette area.

- Freezer Sub-Zero 2-drawer with ice maker
- Refrigerator Sub-Zero 2-drawer
- Cooktop Kenyon 4-burner
- Countertops Corian
- Trash locker

- Double sink Corian
- Garbage disposal
- Microwave
- Drawer storage cedar lined
- Locker storage cedar lined
- Cabinetry Cherry Veneer

MASTER STATEROOM WITH EN-SUITE HEAD

- Spacious and comfortable
- Queen walk-around berth center lined
- Storage lockers
- TV 26" flat screen with DVD player
- Hanging locker
- Storage drawers (6)
- Overhead lighting
- Nightstands Caesar Stone
- Air conditioning system with digital control
- Storage locker with automatic light
- Storage areas and drawers built in
- AC & DC fixtures
- Wood accent package
- En-suite head
- Sole Teak and Holly
- Countertop Corian
- Sink corian
- Mirrored vanity
- Overhead lighting
- Shower with door
- Hanging locker
- Drawer storage

VIP STATEROOM

Located forward with double upper berth and single lower berth.

- Hanging lockers cedar lined (2)
- Hanging locker STBD (wired and plumbed for washer/dryer)
- Overhead lighting
- TV Flat screen
- Reading lights
- AC control SMX

BUNK STATEROOM

Located STBD with single berth.

- Abundant storage beneath berth
- Hanging locker - cedar lined
- Flat screen TV

COCKPIT

- Fish box stainless transom
- Insulated locker stainless - port side
- Insulated ice dump box - stbd side
- Cockpit freezer
- Transom door and gate
- Teak transom
- Teak deck
- Teak covering boards
- Engine room access
- Washdown fresh and salt water
- Cockpit cover

FLYBRIDGE

- Helm pod teak
- Custom gauge package
- Steering wheel polished stainless
- Controls polished stainless
- Bench seating forward with storage
- Helm chairs with foot rests teak Release Marine (2)
- Rod storage under seats and console
- Recessed speakers
- Spreader lights flush mounted
- Overhead LED lighting
- 3-sided isinglass enclosure
- US 9 Miya Epoch teaser reel overhead
- Molded fiberglass hardtop
- Overhead electronics box
- Brow storage
- Fresh water hose outlet
- 8 rail rod holders

FISHING EQUIPMENT

- Rupp triple spreader outriggers
- Rupp center rigger
- Release fighting chair
- Release rocket launcher

ELECTRONICS & NAVIGATION

- (2) Furuno Nav-Net
- Furuno RD-30 Digital Depth/Temp
- NorthStar 952X GPS/Plotter
- Garmin XSV GPSmap (2018)
- Sitex Sea Temp
- (2) Icom IC-om602 VHF radio
- Icom IC-M802 SSB Radio
- Simrad AP-35 Autopilot
- ACR Spotlight Remote

ENGINE ROOM

- Snow white awl gripped engine room with 6' overhead
- Dual fuel filters for main engines
- ZF 1.75/1 gears
- Oil change pump Reverso
- Water maker INC triple membrane
- Charles C-Power isolator transformer
- Fuel polishing system Reverso/Alge-X
- Dripless shaft logs
- Ice maker Eskimo
- Fresh water filtration
- Central overboard drain system with clean-out

PERFORMANCE

These following observations were performed with 3/4 load of fuel, full water, 3 passengers, slack tide.

- 1400 RMP = 21 knots @ 66 GPH
- 1600 RPM = 26 knots @ 80 GPH
- 1800 RPM = 30.6 knots @ 98 GPH (59% load)
- 1900 RPM = 32.5 knots @ 108 GPH (64% load)
- 2100 RPM = 35.5 knots @ 142 GPH
- 2264 RPM = 38.6 knots @ 170 GPH

SALESMAN'S REMARKS

Pier Pressure is fine example of a nicely finished high quality one owner Custom Carolina Sport Fish beautifully maintained to the highest standard by her owner. She is aggressively for sale and priced accordingly. Call the listing broker to set up a private showing of this magnificent low hour fishing machine.

EXCLUSIONS & DISCLAIMER

Exclusions:

- Owner's personal belongings
- Artwork
- Fishing equipment
- Vessel name

The company offers the details of this vessel in good faith but cannot guarantee or warrant the accuracy of this information nor warrant the condition of the vessel. A buyer should instruct his agents, or his surveyors, to investigate such details as the buyer desires validated. Engine and generator hours are at the date of the listing and provided by the vessel owner for information purposes only. Any and all information should be verified by the potential buyer and his surveyor prior to acceptance.

This vessel is offered subject to prior sale, price change or withdrawal without notice.

Exclusions

Owner's personal belongings.

Disclaimer

The Company offers the details of this vessel or yacht in good faith but cannot guarantee or warrant the accuracy of this information nor warrant the condition of the vessel. A buyer should instruct his representatives, agents, or his surveyors, to investigate such details as the buyer desires validated. This vessel or yacht is offered subject to prior sale, price change, or withdrawal without notice.

PHOTOS

ExteriorProfile-4



ExteriorProfile-5



ExteriorProfile-6



ExteriorProfile-7



ExteriorProfile-8



ExteriorStern 1



ExteriorStern



ExteriorStern-2 - Copy



ExteriorStern-2



ExteriorStern-3



ExteriorStern-4



ExteriorStern-5



ExteriorStern-6



ExteriorStern-7



ExteriorStern-8



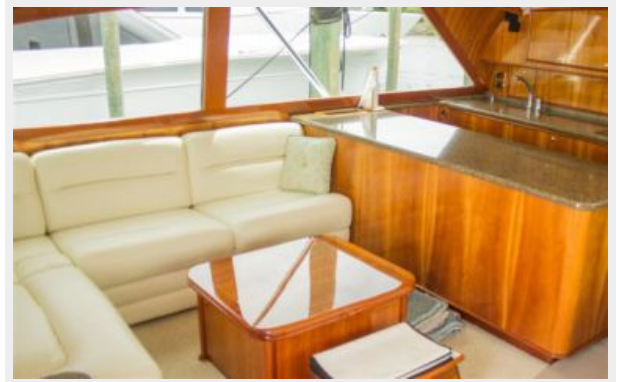
ExteriorStern-9



ExteriorStern-10



InteriorMain 1



InteriorMain



InteriorMain-2



InteriorMain-3



InteriorMain-4



InteriorMain-5



InteriorMain-6



InteriorMain-7



InteriorMain-8



InteriorMain-9



InteriorMain-10



InteriorMain-11



InteriorMain-12



InteriorMain-13



InteriorRooms



InteriorRooms-2



InteriorRooms-3



InteriorRooms-4



InteriorRooms-5



InteriorRooms-6



InteriorRooms-7



InteriorRooms-8



InteriorRooms-9



InteriorRooms-10



InteriorRooms-11



InteriorRooms-12



InteriorRooms-13



InteriorRooms-14



InteriorRooms-15



InteriorRooms-16



InteriorRooms-17



InteriorRooms-18



InteriorRooms-19



InteriorRooms-20



PPControlDeck



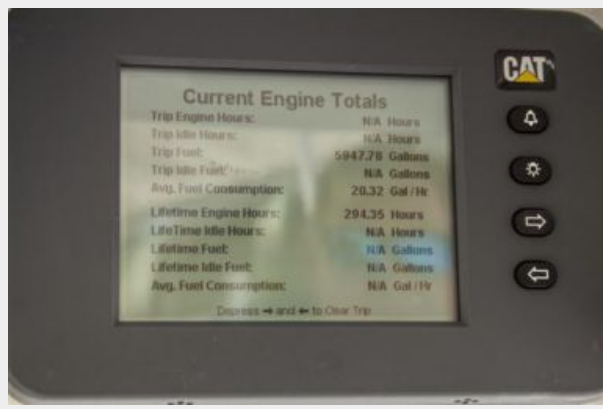
PPControlDeck-2



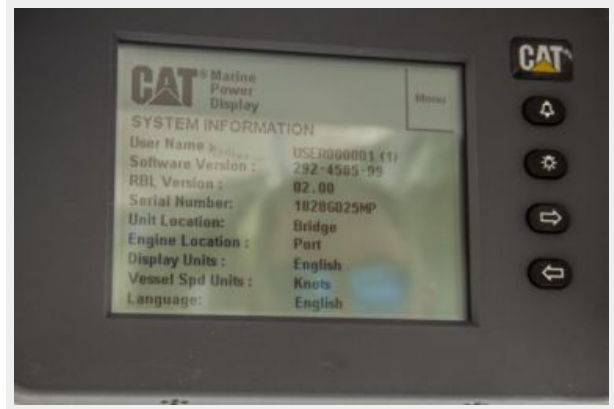
PPControlDeck-3



PPControlDeck-4



PPControlDeck-5



PPControlDeck-6



PPControlDeck-7



PPControlDeck-8



PPControlDeck-9



PPControlDeck-10



PPControlDeck-11



PPControlDeck-12



PPControlDeck-13



PPControlDeck-14



PPControlDeck-15



PPControlDeck-16



PPControlDeck-17



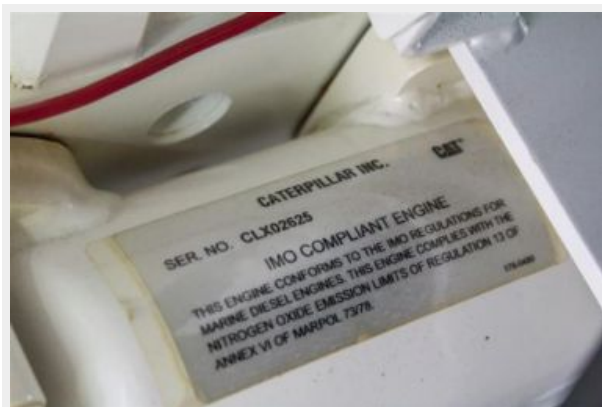
PEngineRoom (1)



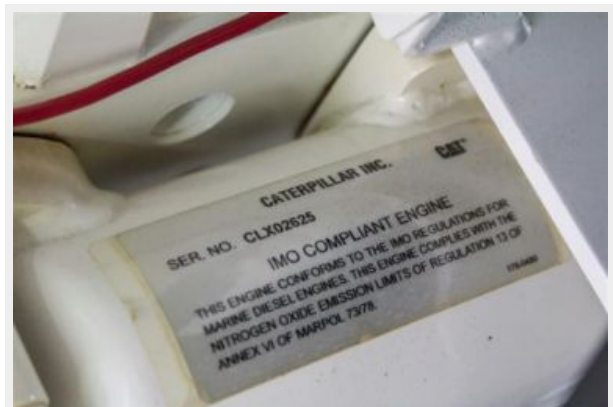
PEngineRoom



PEngineRoom-2 (1)



PEngineRoom-2



PPEngineRoom-3 (1)



PPEngineRoom-3



PPEngineRoom-4 (1)



PPEngineRoom-4



PPEngineRoom-5 (1)



PPEngineRoom-5



PEngineRoom-6 (1)



PEngineRoom-6



PEngineRoom-7 (1)



PEngineRoom-7



PEngineRoom-8 (1)



PEngineRoom-8



PEngineRoom-9 (1)



PEngineRoom-9



PEngineRoom-10 (1)



PEngineRoom-10



PEngineRoom-11 (1)



PEngineRoom-11



PEngineRoom-12 (1)



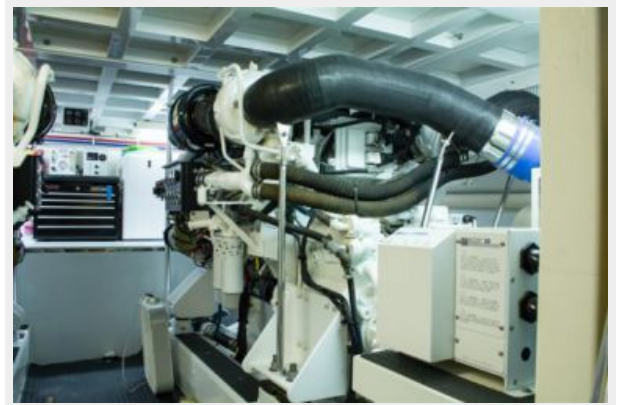
PEngineRoom-12



PEngineRoom-13 (1)



PEngineRoom-13



PEngineRoom-14 (1)



PEngineRoom-14



PEngineRoom-15 (1)



PEngineRoom-15



PEngineRoom-16 (1)



PEngineRoom-16



PEngineRoom-17 (1)



PEngineRoom-17



PEngineRoom-18 (1)



PEngineRoom-18



PEngineRoom-19 (1)



PEngineRoom-19



PEngineRoom-20 (1)



PEngineRoom-20



PEngineRoom-21 (1)



PEngineRoom-21



PEngineRoom-22 (1)



PEngineRoom-22



PEngineRoom-23 (1)



PEngineRoom-23



PPEngineRoom-24 (1)



PPEngineRoom-24



CONTACTS

Andrey Shestakov, leading yacht broker of the sales department of Shestakov Yacht Sales Inc. Shestakov Yacht Sales Inc., the official representative of the Miami/Fort Lauderdale FL headquarters.

Contact details

Email: andrey@shestakovyachtsales.com

Web: shestakovyachtsales.com/en/

Telephones

USA: +1(954)274-4435

Office hours

Monday – Saturday: **9:00 - 21:00** EDT

Sunday: **closed**

Address



Harbour Towne Marina, 850 NE 3rd St,
STE 213, Dania, FL 33004