

PIER PRESSURE — BILLY HOLTON



Судостроитель: BILLY HOLTON

Год постройки: 2006

Модель: Sport Yacht

Цена: ЦЕНА ЯХТЫ ПО ЗАПРОСУ

Местонахождение: United States

Длина общая: 61' 0" (18.59m)

Крейс. скорость: 33 Kts. (38 MPH)

Макс. скорость: 39 Kts. (45 MPH)

Купить **Pier Pressure — BILLY HOLTON** а также выбрать подходящую вам яхту из нашего каталога яхт вам поможет опытный яхтенный брокер Андрей Шестаков. На сегодняшний день компания **Shestakov Yacht Sales Inc.** имеет большое количество яхт в собственном списке продаж, а также тесно сотрудничает со всеми крупными яхтенными производителями по всему миру.

Для того чтобы купить яхту **Pier Pressure — BILLY HOLTON** а также проконсультироваться по любому вопросу связанному с покупкой, продажей, чартером яхт позвоните по телефону **+7(918)465-66-44**.

ОГЛАВЛЕНИЕ

ОГЛАВЛЕНИЕ	2
ХАРАКТЕРИСТИКИ	7
Обзор	7
Основная информация	7
Размеры	7
Скорость, вместимость и масса	7
Размещение	7
Корпус и палуба	7
Информация о двигателе	8
ПОДРОБНОЕ ОПИСАНИЕ	9
ABOUT	9
SPECIFICATIONS	9
SALESMAN'S REMARKS	12
EXCLUSIONS & DISCLAIMER	13
Исключения	13
Отказ от ответственности	13
ФОТОГРАФИИ	14
ExteriorProfile-4	14
ExteriorProfile-5	14
ExteriorProfile-6	14
ExteriorProfile-7	14
ExteriorStern 1	14
ExteriorProfile-8	14
ExteriorStern	15
ExteriorStern-2 - Copy	15
ExteriorStern-2	15
ExteriorStern-3	15
ExteriorStern-4	15

ExteriorStern-5	15
ExteriorStern-6	16
ExteriorStern-7	16
ExteriorStern-8	16
ExteriorStern-9	16
ExteriorStern-10	17
InteriorMain 1	17
InteriorMain	17
InteriorMain-2	17
InteriorMain-3	17
InteriorMain-4	17
InteriorMain-5	18
InteriorMain-6	18
InteriorMain-8	18
InteriorMain-7	18
InteriorMain-10	18
InteriorMain-9	18
InteriorMain-11	19
InteriorMain-12	19
InteriorRooms	19
InteriorMain-13	19
InteriorRooms-3	20
InteriorRooms-2	20
InteriorRooms-4	20
InteriorRooms-5	20
InteriorRooms-7	21
InteriorRooms-6	21
InteriorRooms-9	21
InteriorRooms-8	21

InteriorRooms-10	22
InteriorRooms-11	22
InteriorRooms-12	22
InteriorRooms-13	22
InteriorRooms-14	23
InteriorRooms-15	23
InteriorRooms-16	23
InteriorRooms-17	23
InteriorRooms-18	24
InteriorRooms-19	24
InteriorRooms-20	24
PPControlDeck	24
PPControlDeck-2	24
PPControlDeck-3	24
PPControlDeck-4	25
PPControlDeck-5	25
PPControlDeck-6	25
PPControlDeck-7	25
PPControlDeck-8	25
PPControlDeck-9	25
PPControlDeck-10	26
PPControlDeck-11	26
PPControlDeck-12	26
PPControlDeck-13	26
PPControlDeck-14	26
PPControlDeck-15	26
PPControlDeck-17	27
PPControlDeck-16	27
PPEngineRoom (1)	27

PPEngineRoom	27
PPEngineRoom-2 (1)	27
PPEngineRoom-2	27
PPEngineRoom-3 (1)	28
PPEngineRoom-3	28
PPEngineRoom-4 (1)	28
PPEngineRoom-4	28
PPEngineRoom-5 (1)	28
PPEngineRoom-5	28
PPEngineRoom-6 (1)	29
PPEngineRoom-6	29
PPEngineRoom-7 (1)	29
PPEngineRoom-7	29
PPEngineRoom-8 (1)	29
PPEngineRoom-8	29
PPEngineRoom-9 (1)	30
PPEngineRoom-9	30
PPEngineRoom-10 (1)	30
PPEngineRoom-10	30
PPEngineRoom-11 (1)	30
PPEngineRoom-11	30
PPEngineRoom-12 (1)	31
PPEngineRoom-12	31
PPEngineRoom-13 (1)	31
PPEngineRoom-13	31
PPEngineRoom-14 (1)	31
PPEngineRoom-14	31
PPEngineRoom-15 (1)	32
PPEngineRoom-15	32

PPEngineRoom-16 (1)	32
PPEngineRoom-16	32
PPEngineRoom-17 (1)	32
PPEngineRoom-17	32
PPEngineRoom-18 (1)	33
PPEngineRoom-18	33
PPEngineRoom-19 (1)	33
PPEngineRoom-19	33
PPEngineRoom-20 (1)	33
PPEngineRoom-20	33
PPEngineRoom-21 (1)	34
PPEngineRoom-21	34
PPEngineRoom-22 (1)	34
PPEngineRoom-22	34
PPEngineRoom-23 (1)	34
PPEngineRoom-23	34
PPEngineRoom-24 (1)	35
PPEngineRoom-24	35
КОНТАКТЫ	36
Контактная информация	36
Телефоны	36
Время работы	36
Адрес	36

ХАРАКТЕРИСТИКИ

Обзор

A meticulously pampered low original owner custom sportfish built by one the premiere builders in North Carolina. Billy Holton is regarded as a premier custom designer/builder with an eye for modern yet classic lines. "Pier Pressure" is pampered by her original owner and has received excellent care with only 293 original hours on her C-30 Cats. She received a full hull & topside paint job in 2018.

Основная информация

Тип судна: Sport Yacht

Подкатегория: Convertible

Модельный год: 2006

Год постройки: 2006

Страна: United States

Размеры

Длина общая: 61' 0" (18.59m)

Скорость, вместимость и масса

Крейс. скорость: 33 Kts. (38 MPH)

Макс. скорость: 39 Kts. (45 MPH)

Размещение

Всего кают: 2

Всего ком. состава: 2

Корпус и палуба

Материал корпуса: Composite

Информация о двигателе

Двигатели: 2

Производитель: CAT

ПОДРОБНОЕ ОПИСАНИЕ

ABOUT

A meticulously pampered, low hour, original owner custom sportfish built by one the premiere builders in North Carolina. Billy Holton is regarded as a premier custom designer/builder with an eye for modern yet classic lines. "Pier Pressure" is pampered by her original owner and has received excellent care with only 293 original hours on her C-30 Cats. She received a full hull & topside paint job in 2018.

SPECIFICATIONS

ACCOMMODATIONS

Pier Pressure features a large and beamy salon, with much more.

- Large profile galley with drawer refrigerators and freezers
- Amid ship master stateroom to port with ensuite head and shower
- Guest stateroom with large upper berth and a single lower berth, guest head with stall shower
- Starboard crew quarters with raised single berth and tons of storage

SALON

Entire interior finish work and craftsmanship are top notch. The salon is roomy and spacious with beautiful Cherry Wood finishes throughout

- L-shaped settee
- Table Hi-Low Cherry Wood Release Marine
- TV Sony 40" flat screen on lift
- Entertainment center
- Recessed speakers
- Recessed lighting with dimmers

GALLEY

Located forward to port with a booth dinette to starboard. Teak and Holly soles in galley and dinette area.

- Freezer Sub-Zero 2-drawer with ice maker
- Refrigerator Sub-Zero 2-drawer
- Cooktop Kenyon 4-burner
- Countertops Corian
- Trash locker

- Double sink Corian
- Garbage disposal
- Microwave
- Drawer storage cedar lined
- Locker storage cedar lined
- Cabinetry Cherry Veneer

MASTER STATEROOM WITH EN-SUITE HEAD

- Spacious and comfortable
- Queen walk-around berth center lined
- Storage lockers
- TV 26" flat screen with DVD player
- Hanging locker
- Storage drawers (6)
- Overhead lighting
- Nightstands Caesar Stone
- Air conditioning system with digital control
- Storage locker with automatic light
- Storage areas and drawers built in
- AC & DC fixtures
- Wood accent package
- En-suite head
- Sole Teak and Holly
- Countertop Corian
- Sink corian
- Mirrored vanity
- Overhead lighting
- Shower with door
- Hanging locker
- Drawer storage

VIP STATEROOM

Located forward with double upper berth and single lower berth.

- Hanging lockers cedar lined (2)
- Hanging locker STBD (wired and plumbed for washer/dryer)
- Overhead lighting
- TV Flat screen
- Reading lights
- AC control SMX

BUNK STATEROOM

Located STBD with single berth.

- Abundant storage beneath berth
- Hanging locker - cedar lined
- Flat screen TV

COCKPIT

- Fish box stainless transom
- Insulated locker stainless - port side
- Insulated ice dump box - stbd side
- Cockpit freezer
- Transom door and gate
- Teak transom
- Teak deck
- Teak covering boards
- Engine room access
- Washdown fresh and salt water
- Cockpit cover

FLYBRIDGE

- Helm pod teak
- Custom gauge package
- Steering wheel polished stainless
- Controls polished stainless
- Bench seating forward with storage
- Helm chairs with foot rests teak Release Marine (2)
- Rod storage under seats and console
- Recessed speakers
- Spreader lights flush mounted
- Overhead LED lighting
- 3-sided isinglass enclosure
- US 9 Miya Epoch teaser reel overhead
- Molded fiberglass hardtop
- Overhead electronics box
- Brow storage
- Fresh water hose outlet
- 8 rail rod holders

FISHING EQUIPMENT

- Rupp triple spreader outriggers
- Rupp center rigger
- Release fighting chair
- Release rocket launcher

ELECTRONICS & NAVIGATION

- (2) Furuno Nav-Net
- Furuno RD-30 Digital Depth/Temp
- NorthStar 952X GPS/Plotter
- Garmin XSV GPSmap (2018)
- Sitex Sea Temp
- (2) Icom IC-om602 VHF radio
- Icom IC-M802 SSB Radio
- Simrad AP-35 Autopilot
- ACR Spotlight Remote

ENGINE ROOM

- Snow white awl gripped engine room with 6' overhead
- Dual fuel filters for main engines
- ZF 1.75/1 gears
- Oil change pump Reverso
- Water maker INC triple membrane
- Charles C-Power isolator transformer
- Fuel polishing system Reverso/Alge-X
- Dripless shaft logs
- Ice maker Eskimo
- Fresh water filtration
- Central overboard drain system with clean-out

PERFORMANCE

These following observations were performed with 3/4 load of fuel, full water, 3 passengers, slack tide.

- 1400 RMP = 21 knots @ 66 GPH
- 1600 RPM = 26 knots @ 80 GPH
- 1800 RPM = 30.6 knots @ 98 GPH (59% load)
- 1900 RPM = 32.5 knots @ 108 GPH (64% load)
- 2100 RPM = 35.5 knots @ 142 GPH
- 2264 RPM = 38.6 knots @ 170 GPH

SALESMAN'S REMARKS

Pier Pressure is fine example of a nicely finished high quality one owner Custom Carolina Sport Fish beautifully maintained to the highest standard by her owner. She is aggressively for sale and priced accordingly. Call the listing broker to set up a private showing of this magnificent low hour fishing machine.

EXCLUSIONS & DISCLAIMER

Exclusions:

- Owner's personal belongings
- Artwork
- Fishing equipment
- Vessel name

The company offers the details of this vessel in good faith but cannot guarantee or warrant the accuracy of this information nor warrant the condition of the vessel. A buyer should instruct his agents, or his surveyors, to investigate such details as the buyer desires validated. Engine and generator hours are at the date of the listing and provided by the vessel owner for information purposes only. Any and all information should be verified by the potential buyer and his surveyor prior to acceptance.

This vessel is offered subject to prior sale, price change or withdrawal without notice.

Исключения

При продаже яхты исключаются личные вещи владельца.

Отказ от ответственности

Компания предоставляет описание судна или яхты добросовестно, но не может гарантировать точность этой информации, а также не ручается за техническое состояние. Покупатель должен проинструктировать своих агентов или оценщиков исследовать представленную информацию более подробно, по собственному желанию. Продажа судна или яхты, изменение цены или снятие с продажи будет происходить без предварительного уведомления.

ФОТОГРАФИИ

ExteriorProfile-4



ExteriorProfile-5



ExteriorProfile-6



ExteriorProfile-7



ExteriorProfile-8



ExteriorStern 1



ExteriorStern



ExteriorStern-2 - Copy



ExteriorStern-2



ExteriorStern-3



ExteriorStern-4



ExteriorStern-5



ExteriorStern-6



ExteriorStern-7



ExteriorStern-8



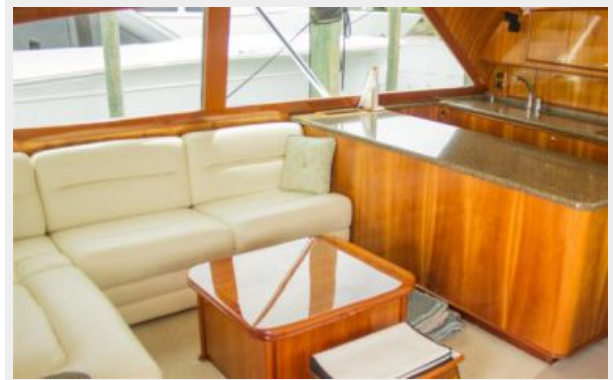
ExteriorStern-9



ExteriorStern-10



InteriorMain 1



InteriorMain



InteriorMain-2



InteriorMain-3



InteriorMain-4



InteriorMain-5



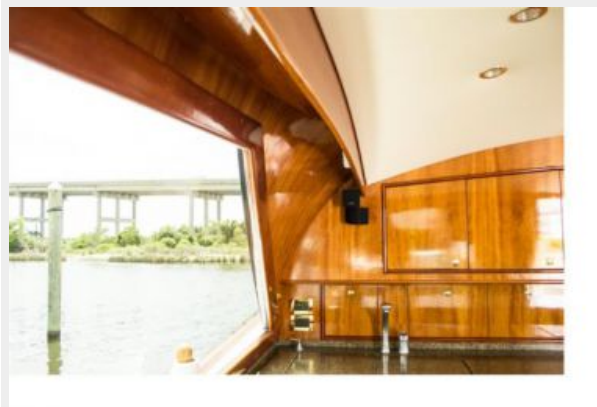
InteriorMain-6



InteriorMain-7



InteriorMain-8



InteriorMain-9



InteriorMain-10



InteriorMain-11



InteriorMain-12



InteriorMain-13



InteriorRooms



InteriorRooms-2



InteriorRooms-3



InteriorRooms-4



InteriorRooms-5



InteriorRooms-6



InteriorRooms-7



InteriorRooms-8



InteriorRooms-9



InteriorRooms-10



InteriorRooms-11



InteriorRooms-12



InteriorRooms-13



InteriorRooms-14



InteriorRooms-15



InteriorRooms-16



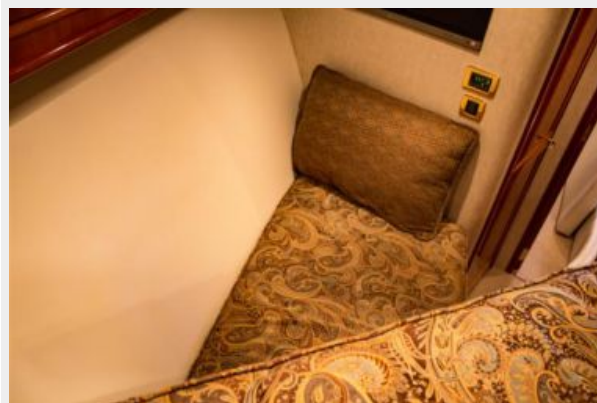
InteriorRooms-17



InteriorRooms-18



InteriorRooms-19



InteriorRooms-20



PPControlDeck



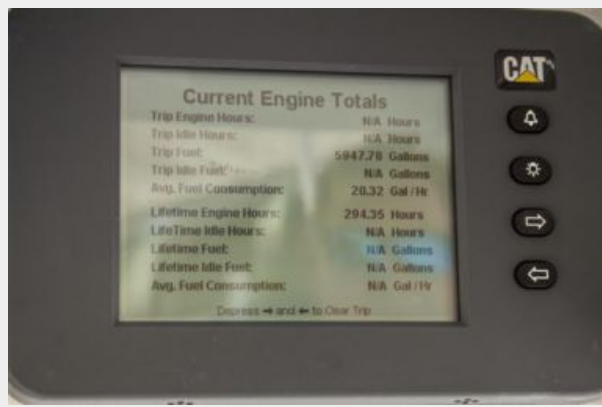
PPControlDeck-2



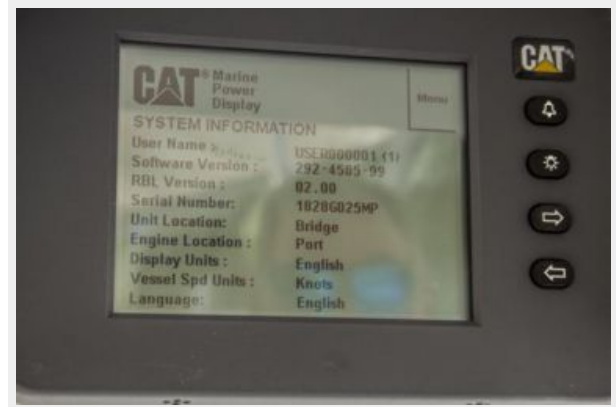
PPControlDeck-3



PPControlDeck-4



PPControlDeck-5



PPControlDeck-6



PPControlDeck-7



PPControlDeck-8



PPControlDeck-9



PPControlDeck-10



PPControlDeck-11



PPControlDeck-12



PPControlDeck-13



PPControlDeck-14



PPControlDeck-15



PPControlDeck-16



PPControlDeck-17



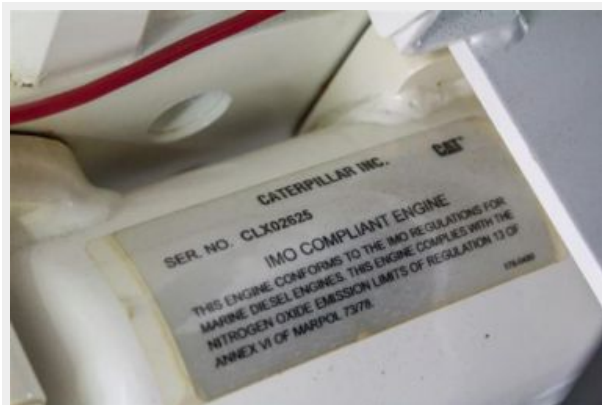
PEngineRoom (1)



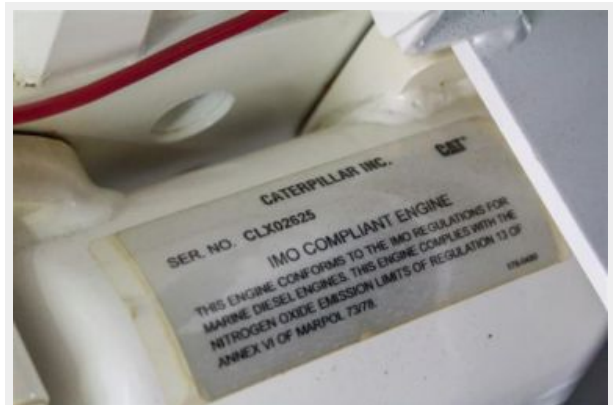
PEngineRoom



PEngineRoom-2 (1)



PEngineRoom-2



PPEngineRoom-3 (1)



PPEngineRoom-3



PPEngineRoom-4 (1)



PPEngineRoom-4



PPEngineRoom-5 (1)



PPEngineRoom-5



PEngineRoom-6 (1)



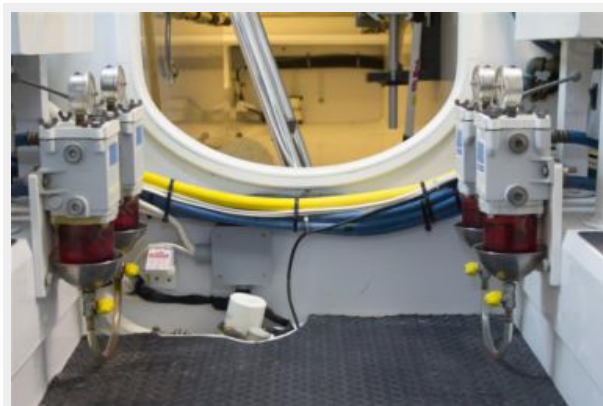
PEngineRoom-6



PEngineRoom-7 (1)



PEngineRoom-7



PEngineRoom-8 (1)



PEngineRoom-8



PEngineRoom-9 (1)



PEngineRoom-9



PEngineRoom-10 (1)



PEngineRoom-10



PEngineRoom-11 (1)



PEngineRoom-11



PEngineRoom-12 (1)



PEngineRoom-12



PEngineRoom-13 (1)



PEngineRoom-13



PEngineRoom-14 (1)



PEngineRoom-14



PEngineRoom-15 (1)



PEngineRoom-15



PEngineRoom-16 (1)



PEngineRoom-16



PEngineRoom-17 (1)



PEngineRoom-17



PEngineRoom-18 (1)



PEngineRoom-18



PEngineRoom-19 (1)



PEngineRoom-19



PEngineRoom-20 (1)



PEngineRoom-20



PEngineRoom-21 (1)



PEngineRoom-21



PEngineRoom-22 (1)



PEngineRoom-22



PEngineRoom-23 (1)



PEngineRoom-23



PPEngineRoom-24 (1)



PPEngineRoom-24



КОНТАКТЫ

Андрей Шестаков (Andrey Shestakov) – ведущий яхтенный брокер отдела продаж яхт и судов компании Shestakov Yacht Sales Inc. Официальный представитель Shestakov Yacht Sales Inc. для русскоговорящих клиентов в центральном офисе компании в Майами/Форт Лодердейл/Флорида/США.

Контактная информация

Email: andrey@shestakovyachtsales.com

Web: shestakovyachtsales.com

Телефоны

Краснодарский край: **+7(918)465-66-44**

США, Майами, Флорида: **+1(954)274-4435**

Время работы

Понедельник – Суббота: **9:00 - 21:00**
EDT

Воскресенье: **Закрето**

Адрес



Harbour Towne Marina, 850 NE 3rd St,
STE 213, Dania, FL 33004