

## BEL CANTO — PEARSON



**Builder:** PEARSON

**Year Built:** 1985

**Model:** Cruising Sailboat

**Price:** PRICE ON APPLICATION

**Location:** United States

**LOA:** 34' 0" (10.36m)

**Beam:** 11' 2" (3.40m)

**Max Draft:** 5' 11" (1.80m)

Our experienced yacht broker, Andrey Shestakov, will help you choose and buy a yacht that best suits your needs **Bel Canto — PEARSON** from our catalogue. Presently, at Shestakov Yacht Sales Inc., we have a wide variety of yachts available on our sale's list. We also work in close contact with all the big yacht manufacturers from all over the world.

If you would like to buy a yacht **Bel Canto — PEARSON** or would like help answering any questions concerning purchasing, selling or chartering a yacht, please call **+1(954)274-4435**

---

# TABLE OF CONTENTS

---

TABLE OF CONTENTS	2
SPECIFICATIONS	3
Overview	3
Basic Information	3
Dimensions	3
Speed, Capacities and Weight	3
Accommodations	4
Hull and Deck Information	4
Engine Information	4
DETAILED INFORMATION	5
Overview	5
Exclusions	7
Disclaimer	7
PHOTOS	8
CONTACTS	17
Contact details	17
Telephones	17
Office hours	17
Address	17

---

# SPECIFICATIONS

---

## Overview

---

Hull number 147

### Broker's Comments:

The Pearson brand is well known for producing fine production cruising boats through the 1980s. "Bel Canto" is a fresh water cruiser traditionally equipped with upgrades to sails, rigging, electronics and conscientiously maintained by the owner. The mechanicals have been professionally maintained by marina staff and are ready to go. A comfortable boat suitable for day sailing, weekendng, and extended cruising, this Pearson will serve new owners for many years. Currently stored inside for viewing in all weather.

## Basic Information

---

**Category:** Cruising Sailboat

**Sub Category:** Sloop

**Model Year:** 1985

**Year Built:** 1985

**Country:** United States

## Dimensions

---

**LOA:** 34' 0" (10.36m)

**LWL:** 28' 2" (8.59m)

**Beam:** 11' 2" (3.40m)

**Max Draft:** 5' 11" (1.80m)

**Clearance:** 48' 9" (14.86m)

**MFG Length:** 34' 0" (10.36m)

## Speed, Capacities and Weight

---

**Displacement:** 11240 Pounds

**Fuel Capacity:** 15 Gallons

---

## Accommodations

---

**Total Cabins:** 1

**Sleeps:** 5

**Total Heads:** 1

---

## Hull and Deck Information

---

**Hull Material:** Fiberglass

---

## Engine Information

---

**Engines:** 1

**Manufacturer:** Yanmar

**Model:** 3GM

**Engine Type:** Inboard

**Fuel Type:** Diesel

---

# DETAILED INFORMATION

---

## Overview

---

### ENGINE:

- Yanmar Diesel 3GM
- 27HP
- Fuel Capacity 15 gal
- 2 Blade Fixed Prop

### MECHANICAL AND ELECTRICAL:

- Speed/Depth: SR Mariner Analogue
- Battery Charger
- Compass: Pedestal Mount
- Wheel Steering on Pedestal
- Anchor Windlass and Chain
- Water Pump: Jabsco Water Pressure Pump
- Outlets (2)
- Battery (2) Deep Cycle
- Battery Selector Switch
- Shore Power: 50' Shorepower Cable
- VHF: I-Com VHF
- Bilge Pumps (1) Electric, (1) Manual

### INTERIOR:

- Sleeps 5
- Hot and Cold Water
- 2 Burner Propane stove/Oven
- Ice box
- 110 Volt Microwave
- Hot and Cold Pressure Water
- Folding Teak Dining Table
- Teak Floors, Stairs and Paneling

- Hanging Locker
- Kidde Fire Extinguisher (2)
- Spacious V-Berth
- Water Tank (100 gal)
- Holding Tank (18 gal)
- Four (4) opening Ports and one (1) Opening hatch over V-berth
- Window Curtains
- Teak companionway hatch boards.
- Chart Table
- Head

## EXTERIOR:

- Dodger with Side Curtains
- Folding Cockpit Table
- Danforth Anchor 15lb.
- 150' – Anchor Rode
- Multiple Dock Lines
- Double Lifelines with Gates
- Anchor Locker
- Large opening hatches in V berth and Main Saloon
- Fenders, Dock Lines Boat Hook, Life Ring
- Lifejackets
- Stainless Steel Boarding Ladder
- Emergency Tiller
- Stern Light
- Swim Ladder
- (4) Fenders
- VC-17 Bottom Paint

## SAILS and EQUIPMENT

- Doyle Mainsail (Dacron) 2013
- Doyle 153 Genoa (Dacron) 2013
- Neil Pride Asymmetrical Spinnaker (Nylon) 2012
- 130 Genoa Harrstick (Dacron) 1985
- Chute Scoop for Spinnaker
- Harken Roller Furling 2013

- Vang with “Boom Kicker”
- Mainsheet Traveler System (Harken)

## EXTRAS

- Boat Cradle
- Assorted Sheets and Dock lines in new to very good condition.

## Exclusions

---

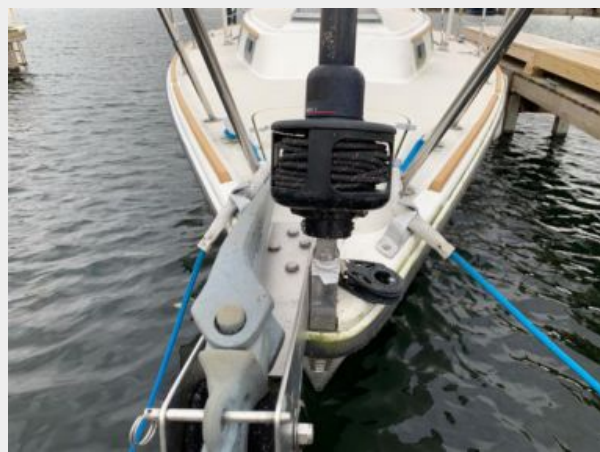
Owner's personal belongings.

## Disclaimer

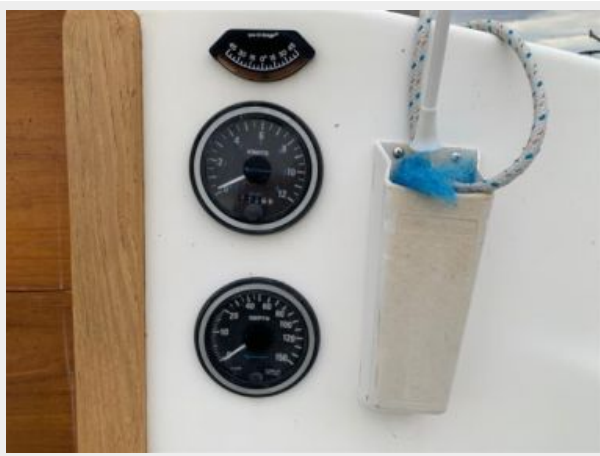
---

The Company offers the details of this vessel or yacht in good faith but cannot guarantee or warrant the accuracy of this information nor warrant the condition of the vessel. A buyer should instruct his representatives, agents, or his surveyors, to investigate such details as the buyer desires validated. This vessel or yacht is offered subject to prior sale, price change, or withdrawal without notice.

# PHOTOS



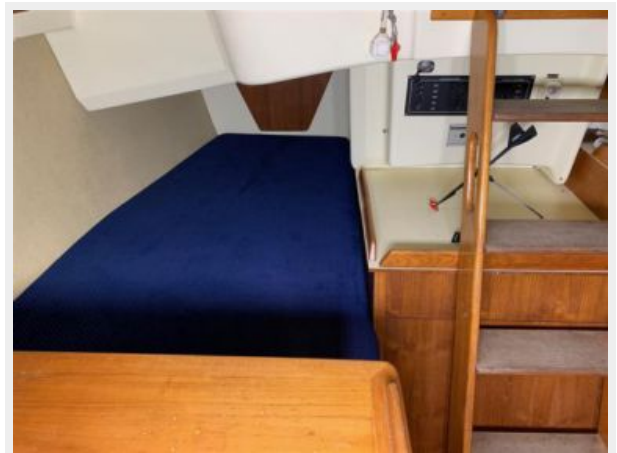




















# CONTACTS

---

Andrey Shestakov, leading yacht broker of the sales department of Shestakov Yacht Sales Inc. Shestakov Yacht Sales Inc., the official representative of the Miami/Fort Lauderdale FL headquarters.

## Contact details

---

Email: [andrey@shestakovyachtsales.com](mailto:andrey@shestakovyachtsales.com)

Web: [shestakovyachtsales.com/en/](http://shestakovyachtsales.com/en/)

## Telephones

---

USA: +1(954)274-4435

## Office hours

---

Monday – Saturday: **9:00 - 21:00** EDT

Sunday: **closed**

## Address

---



Harbour Towne Marina, 850 NE 3rd St,  
STE 213, Dania, FL 33004