

BROWN EYED GIRLS — HATTERAS



Судостроитель: HATTERAS

Год постройки: 2018

Модель: Моторная яхта

Цена: **ЦЕНА ЯХТЫ ПО ЗАПРОСУ**

Местонахождение: United States

Длина общая: 74' 5" (22.68m)

Ширина: 21' 0" (6.40m)

Мин. осадка: 5' 3" (1.60m)

Макс. осадка: 5' 3" (1.60m)

Крейс. скорость: 20 Kts. (23 MPH)

Макс. скорость: 27 Kts. (31 MPH)

Купить **Brown Eyed Girls — HATTERAS** а также выбрать подходящую вам яхту из нашего каталога яхт вам поможет опытный яхтенный брокер Андрей Шестаков. На сегодняшний день компания **Shestakov Yacht Sales Inc.** имеет большое количество яхт в собственном списке продаж, а также тесно сотрудничает со всеми крупными яхтенными производителями по всему миру.

Для того чтобы купить яхту **Brown Eyed Girls — HATTERAS** а также проконсультироваться по любому вопросу связанному с покупкой, продажей, чартером яхт позвоните по телефону **+7(918)465-66-44**.

ОГЛАВЛЕНИЕ

ОГЛАВЛЕНИЕ	2
ХАРАКТЕРИСТИКИ	6
Обзор	6
Основная информация	6
Размеры	7
Скорость, вместимость и масса	7
Размещение	7
Корпус и палуба	7
Информация о двигателе	7
ПОДРОБНОЕ ОПИСАНИЕ	8
Salon	8
Galley/Dining Area	8
Master & Guest Accommodations	9
Flybridge & Bridge Deck	11
Navigation & Electronics	11
Aft Deck	13
Crew Area	14
Engine Room	14
Tender	15
Disclaimer	16
Исключения	16
Отказ от ответственности	16
ФОТОГРАФИИ	17
Port Side Profile	17
Starboard Side Profile	17
Bow Profile	17
Transom/Tender	17
Aft Deck Seating	17

Running Profile	17
Aft Deck Wet Bar	18
Aft Deck Seating	18
Aft Deck Wet Bar Refrigerator	18
Eskimo Ice Machine	18
Aft Deck Control Station Port Side	19
Starboard Side Deck	19
Brown Eyed Girls_Bow8	19
Bow	19
Bow Lounge	19
Bow	19
Brown Eyed Girls_Flybridge4	20
Brown Eyed Girls_Flybridge6	20
Brown Eyed Girls_Flybridge7	20
Brown Eyed Girls_Flybridge10	20
Brown Eyed Girls_Flybridge13	20
Brown Eyed Girls_Flybridge17	20
Brown Eyed Girls_Flybridge18	21
Brown Eyed GirlsSAM_6082	21
Brown Eyed GirlsSAM_6085	21
Brown Eyed Girls_Salon4	21
Brown Eyed Girls_Salon5	22
Brown Eyed Girls_Salon3	22
Brown Eyed Girls_Galley1	22
Brown Eyed Girls_Galley2	22
Brown Eyed Girls_Galley8	22
Brown Eyed Girls_Galley6	22
Brown Eyed Girls_Day Head1	23
Brown Eyed Girls_Dinette2	23

Brown Eyed Girls_Hallway3	23
Brown Eyed Girls_Hallway2	23
Brown Eyed Girls_Laundry1	24
Brown Eyed Girls_Master Stateroom2	24
Brown Eyed Girls_Master Stateroom10	24
Brown Eyed Girls_Master Stateroom8	24
Brown Eyed Girls_Master Head2	25
Brown Eyed Girls_Master Head3	25
Brown Eyed Girls_Forward Stateroom2	25
Brown Eyed Girls_Forward Stateroom3	25
Brown Eyed Girls_Forward Head1	26
Brown Eyed Girls_Port Guest Stateroom2	26
Brown Eyed Girls_Starboard Guest Stateroom2	26
Brown Eyed Girls_Port Guest Stateroom5	26
Brown Eyed Girls_Guest Head1	27
Brown Eyed Girls_Starboard Guest Stateroom5	27
Brown Eyed Girls_Crew Quarters1	27
Brown Eyed Girls_Crew Quarters2	27
Brown Eyed Girls_Crew Quarters4	28
Brown Eyed Girls_Crew Quarters5	28
Brown Eyed Girls_Crew Quarters6	28
Brown Eyed Girls_Engine Room1	28
Brown Eyed Girls_Engine Room9	29
Brown Eyed Girls_Engine Room5	29
Brown Eyed Girls_Swim Platform3	29
Brown Eyed Girls_Swim Platform1	29
Brown Eyed Girls_Swim Platform4	29
КОНТАКТЫ	30
Контактная информация	30

Телефоны	30
Время работы	30
Адрес	30

ХАРАКТЕРИСТИКИ

Обзор

Brown Eyed Girls is a 2019 Hatteras 75M PANACERA featuring four staterooms, three heads/showers, a day head and lower crew quarters/head/shower that match the same beauty. This captain maintained luxury vessel's appearance and condition is the same as the day it was delivered with twin 1800HP Caterpillar C32A engines. She hosts a beautifully designed salon and galley highlighted with rose/ebony wood cabinetry and engineered oak flooring. Directly above the dining area is a magnificent sky light adding the perfect touch of elegance. Her upper deck has a custom enclosed flybridge complete with a self serve bar area. Every detail of Brown Eyed Girls was thoroughly planned and executed. You do not want to miss your chance to view this outstanding yacht. A 15ft Williams Jet tender is included. Located in Miami Beach, FL

- Engine Hours 190 Generator Hours: 165 As of 07/23/20
- Oil Change performed on 07/01/20
- New Bottom Paint 07/10/20
- Four Stateroom
- Three Heads/Showers
- Day head
- Lower Crew Quarters and Head/Shower
- Custom Wood Cabinetry
- Custom Flooring
- Custom Decor
- Custom Enclosed Flybridge with Sunshade on deck
- Custom Fabricated Exterior Tables by Marine Tables
- Aft Deck Eskimo Ice Machine
- Aft Deck Control Station

Основная информация

Тип судна: Моторная яхта

Подкатегория: Flybridge

Модельный год: 2019

Год постройки: 2018

Страна: United States

Открытая палуба мостика: Да

Размеры

Длина общая: 74' 5" (22.68m)

Ширина: 21' 0" (6.40m)

Мин. осадка: 5' 3" (1.60m)

Макс. осадка: 5' 3" (1.60m)

Трапы: 31' 0" (9.45m)

Скорость, вместимость и масса

Крейс. скорость: 20 Kts. (23 MPH)

Дальность на крейсерской скорости:
330

Макс. скорость: 27 Kts. (31 MPH)

Дальность на макс. скорости: 281 Kts.

Чистый вес: 128 Pounds

Вместимость воды: 300 Gallons

Вместимость сточного бака: 250 Gallons **Объем топливного бака:** 2200 Gallons

Размещение

Всего кают: 4

Всего ком. состава: 3

Каюты экипажа: 1

Комм. состав экипажа: 1

Корпус и палуба

Материал корпуса: Fiberglass

Цвет корпуса: WHITE

Информация о двигателе

Двигатели: 2

Производитель: Caterpillar

Модель: C32A

Тип двигателя: Inboard

Тип топлива: Diesel

ПОДРОБНОЕ ОПИСАНИЕ

Salon

Brown Eyed Girls' handsomely designed salon is stunning and was built for entertaining. Custom wood craftsmanship, large panoramic views, custom furnishings and built in amenities are offered here in immaculate fashion. This wide open area flows seamlessly into the galley/dining area allowing you to play host with little effort.

- Electronic Sliding Salon Door – Upgrade
- Engineered Oak wood flooring – Upgrade
- Custom Rose & Ebony wood cabinetry - Upgrade
- Wine Cooler
- Ice Maker
- Large screen TV encased in custom ebony wood work
- Entertainment package
- DC LED dimmable lights
- AC duplex outlets
- Custom fabricated sofa and ottoman with storage
- Throw pillows
- One club chair
- HVAC control
- Privacy Blinds
- Day head - portside - midship

Galley/Dining Area

The custom oak flooring continues from the salon into the galley. Rich ebony cabinetry is highlighted with quartz countertops in here along with a large center island to match. Plentiful storage, top of the line appliances and large work spaces are what make this a dream kitchen. Enjoy water views from the atrium windows by day and star gazing through the large skylight at night. This is quite an impressive area.

- Engineered Oak wood flooring
- Microwave / convection oven
- Induction cooktop
- Dishwasher
- Upright AC refrigerator with freezer and icemaker
- Amplifier, speakers, and volume control integrated with salon stereo

- HVAC Control
- Water level gauge
- Center island with Quartz countertop, integrated custom wood cabinetry, dishwasher
- Quartz countertop with under mount stainless steel sink and with custom wood cabinetry below
- 1/2HP continuous feed garbage disposal
- Pantograph door with lock to side deck, starboard
- Two glass dinette tables with dark tint
- Atrium windows with 15% added tint – Upgrade
- Large skylight

Master & Guest Accommodations

Master Head/Shower: En Suite

- Calacatta Gold countertop, custom tile backsplash, sink
- Wood flooring
- Wood baseboard
- Custom tile shower with marble top bench followed by custom tile
- Calacatta Gold shower accents
- Custom wood cabinetry with storage
- Towel bar, towel rings, tissue holder, robe hooks
- Medicine cabinet
- Freshwater toilet
- 120V AC air freshener blower
- DC LED dimmable lights
- DC low level lights under toe kicks
- AC duplex outlet with ground fault protection
- Air conditioning vent
- Holding tank 3/4 full indicator light

VIP Stateroom - Forward

- Carpeting
- Fabric headliner
- Queen berth, custom wood berth base and cedar-lined storage
- Upholstered headboard
- Cedar-lined hanging locker with shelving and automatic lights
- LED TV
- AM/FM stereo receiver with DVD player and speakers
- Full length mirror
- DC LED dimmable lights
- DC low level lights under berth
- AC duplex outlets

- Screened overhead hatch with privacy cover
- Hullside storage cabinets
- Port lights with window coverings, port and starboard
- HVAC control
- Smoke and carbon monoxide detectors

Guest Stateroom: Starboard

- Carpeting
- Fabric headliner
- Full berth, wood berth base and cedar-lined storage
- Upholstered headboard
- Cedar-lined hanging locker with automatic light
- Nightstand with drawers
- LED TV
- DC AM/FM stereo receiver with DVD player and speakers
- DC LED dimmable lights
- AC duplex outlets
- Port light with window covering
- HVAC control
- Smoke and carbon monoxide detectors
- Private access to Guest Head/Shower

Guest Stateroom: Port

- Carpeting
- Fabric headliner
- (2) twin berths, wood berth bases with storage
- HMC mattress, bunk cover, shams, throw pillows, mattress pad, sheet set, sleeping pillows
- Upholstered headboard
- Cedar-lined hanging locker and automatic light
- Nightstand with drawers
- LED TV
- DC AM/FM stereo receiver with DVD player and speakers
- DC LED dimmable lights
- AC duplex outlets
- Port light with window covering
- HVAC control
- Smoke and carbon monoxide detectors

Guest Head/Shower: Midship Starboard

- Calacatta Gold Counter top
- Ebony Wood Cabinetry
- Full Height Back splash - Custom tile

- Calacatta Shower Seat/Ledge
- Shower Niche - Custom tile
- Custom Wood Flooring

Flybridge & Bridge Deck

- Custom enclosed fly bridge
- Metallic fiberglass hardtop with stainless steel supports, overhead LED lighting, mast, molded mounting pads, and anchor light
- Lounge and attached L shaped seating with Dri-fast cushions upholstered in exterior grade fabric, storage.
- Teak high gloss table with stainless steel pedestals
- Cabinet with single electric grill
-
- Systems monitor with programmable logic controller read out, visual and audible signals for exhaust temperature, alternator, battery voltage, high bilge water, fire warning in engine compartment, fire extinguisher discharge in engine room AC power loss, smoke detectors, carbon monoxide detectors, and holding tank 3/4 full monitor
- Single-lever clutch and throttle controls (electronic) with emergency back up and engine synchronization
- Hydraulic power assisted steering
- GPS/Plotter, VHF, autopilot repeater, digital depth and temp
- Control station with all necessary switches and dimmable lighted instruments
- Compass with dimmable light
- DC AM/FM stereo entertainment system and speakers
- Fuel level gauges
- Adjustable helm chair
- Welded and polished stainless steel grab rails and stanchions
- Framed glass windshield
- Painted (polyurethane) aluminum radar arch with masthead light and anchor light
- Walk up self-serve wet bar, refrigerator, icemaker - UPGRADE
- TV
- Molded in stairs to aft deck with hatch
- DC low level lights

Navigation & Electronics

Navigation Equipment

Helm Displays: Garmin GPSMAP 8617

Sounder: Garmin GSD-24 Network Sounder, Garmin B260 Transducer

Autopilot: Garmin Reactor 40 Steer by Wire

Radar: Garmin GMR 1226XHD2-6 12KW Open Array with 6' Antenna

VHF: Icom IC-M506 Radio, 16' Comrod with mount

Camera: Garmin GC 10 Marine Camera in Engine Room

Additional Search Light: ACR-100LED Remote Control

AIS: Garmin AIS 600

Night Vision: FLIR M324S Stabilized Thermal Camera with JCU

Side Scan: Garmin DCV 10 Scanning Sonar with GT30-THP Pair Ducer

Sat Weather: Garmin GXM53 XM Satellite Antenna includes Wind Speed/Direction

Digital Depth: Furuno RD-33 with AIRMAR DT800 Smart Sensor

Nearshore Internet: AIGEAN AN-7000 WiFi Client, Wireless Router, Dual Wireless Access Point, Cradlepoint Wireless Cell Router, Digital Cell Antenna

Sat TV: KVH HD7, KVH Direct TV Receiver

Sat Internet/Phone: KVH V3IP

HattCON Equipment

Helm Displays: 12" HattCON Glass Touchscreen

Interior Displays: 8.8" Glass Touchscreen

GSM Kit: Enables Alarm SMS Text Message Capability

iPad/iPhone Server: Enable iPad/iPhone App

Remote Screen Control: Multi Function Rotary Knob for Discrete Screen Control

Door Monitoring: Door open alarm for 5 doors

PTZ Cameras: PTZ camera with digitized control on both the HattCON & Garmin screens

Aft Deck

The comfortable aft deck features spotless teak flooring, a custom made table by Marine Tables accompanied by teak chairs and a cushioned bench which provides more than ample seating for your guests. Enjoy the wet bar/refrigerator combo while listening to your favorite music on the outdoor speakers. The starboard side Eskimo ice machine compliments this area well. There is also a wing control station on the port side which makes docking a breeze. Wide, walk around side decks aid in the handling of lines and make short work of getting forward to the posh bow

lounge.

The hydraulic swim platform is perfect for a day of play in the water and lowering the fifteen-foot tender.

Upgrades: Hydraulic Swim Platform - Hydraulic Davit, 1,500 lb. capacity - Hydraulic Stern Thruster - Stern Port & Stb docking windlasses (2,200 pound)

Features:

- Lounge with Dri-fast cushions upholstered in exterior grade fabric, storage
- Molded fiberglass steps with lights to flybridge
- Molded fiberglass steps with lights to aft deck, port & starboard
- Stainless steel gates from aft deck to platform
- AC lighting in hardtop
- Boarding gates, port and starboard side decks
- Amplifier, speakers, and volume control integrated with salon stereo
- AC duplex outlet(s) with ground fault protection
- Custom Teak Marine Table
- Aft deck bar with sink and refrigerator
- Port side wing station with clutch and throttle controls
- Tender chocks installed on hydraulic swim platform

Crew Area

The crew area is in pristine condition and was tastefully designed with the same custom materials as the rest of this amazing vessel.

- Single Berth
- Wood flooring
- Rose and Ebony Wood cabinetry in both the quarters and head
- Work Room Area with white overlay bulkheads
- Crew galley with sink/storage/microwave

Engine Room

- Painted polyurethane engine room and bilges
- Freshwater AC back-up pump

- Insulation in engine room ceiling, for noise mitigation in salon
- Water manifold with centralized shut-off valve for sinks and showers
- Pick-up sea chests
- Pultruded fiberglass rudder shelf
- 1" stainless steel steering tie bar with pivoting self-aligning ball joint connection at all cylinder and tie bar connections
- AC Engine room lights
- DC lights
- DC ventilation blower
- Twin diesel, freshwater cooled main engines with electrically controlled marine gears, neutral interlocks, exhaust silencers, engine hour meters, alternators, fuel filters and seawater strainers
- Digital monitoring for main engines
- 24V DC bilge and sump pumps with heavy duty float switches and protective guards
- Bronze/chrome ball valves through bolted in solid fiberglass on all underwater through hull fittings with electrical bonding throughout
- Pressurized 230V AC freshwater pump
- 230V AC electric water heaters
- Fiberglass fuel tanks constructed with fire retardant resin and bronze fittings
- Start/stop switches
- Fixed fire extinguishing system for engine compartment with automatic and remote manual controls, plus audible and visual discharge signals
- Two 27.5kW freshwater cooled Electronic Quiet
- Diesel Onan generator with shock mounts, sound enclosure, seawater strainer, remote start, fuel/ water separator, hour meter and water lift muffler
- Generator exhaust water separator
- Polyethylene water lines
- USCG approved fuel lines
- Electric fuel transfer system with filtration and dry tank protection for pump
- AC compressed air system with air line and regulator
- Dockside water inlet with pressure regulating valve
- Fiberglass water tanks, constructed with bronze fittings and materials which comply with the requirements of Title 21 for FDA
- Fiberglass holding tanks, constructed with bronze fittings and 24V DC sewage pump, plumbed for dockside pump out, with 3/4 full display and alarm
- 110V AC oil changing system for engines, generators and gears
- Fuel filter/water separator, generators
- Duplex fuel filters/water separators, engines
- Storage racks - UPGRADE
- Zero speed stabilizer system - UPGRADE

Tender

- Williams Sportjet 460 fitted with 150hp engine
- Carbon white tubes
- White vinyl upholstery
- Teak
- Chart plotter
- Fusion music package
- LED deck lights VHF radio
- Bimini - white
- Overall cover
- SS anchor
- Battery charger
- White chocks
- SS tie downs

Disclaimer

The Company offers the details of this vessel in good faith but cannot guarantee or warrant the accuracy of this information nor warrant the condition of the vessel. A buyer should instruct his agents, or his surveyors, to investigate such details as the buyer desires validated. This vessel is offered subject to prior sale, price change, or withdrawal without notice.

Исключения

При продаже яхты исключаются личные вещи владельца.

Отказ от ответственности

Компания предоставляет описание судна или яхты добросовестно, но не может гарантировать точность этой информации, а также не ручается за техническое состояние. Покупатель должен проинструктировать своих агентов или оценщиков исследовать представленную информацию более подробно, по собственному желанию. Продажа судна или яхты, изменение цены или снятие с продажи будет происходить без предварительного уведомления.

ФОТОГРАФИИ

Port Side Profile



Starboard Side Profile



Bow Profile



Transom/Tender



Running Profile



Aft Deck Seating



Aft Deck Seating



Aft Deck Wet Bar



Aft Deck Wet Bar Refrigerator



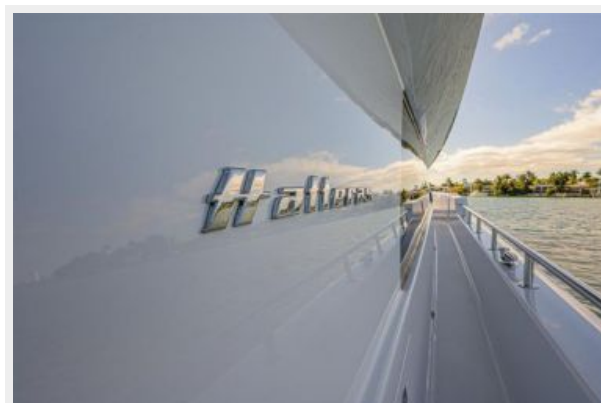
Eskimo Ice Machine



Aft Deck Control Station Port Side



Starboard Side Deck



Brown Eyed Girls_Bow8



Bow



Bow Lounge



Bow



Brown Eyed Girls_Flybridge4



Brown Eyed Girls_Flybridge6



Brown Eyed Girls_Flybridge7



Brown Eyed Girls_Flybridge10



Brown Eyed Girls_Flybridge13



Brown Eyed Girls_Flybridge17



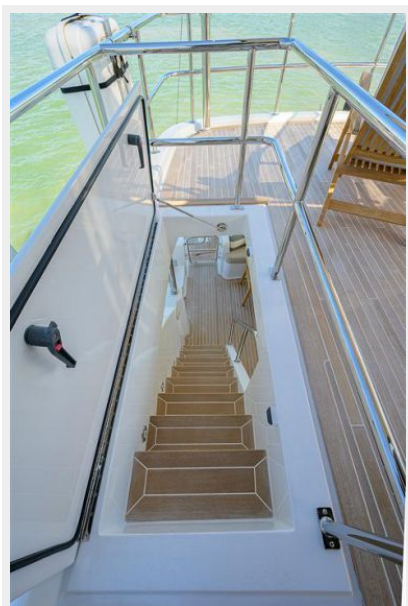
Brown Eyed Girls_Flybridge18



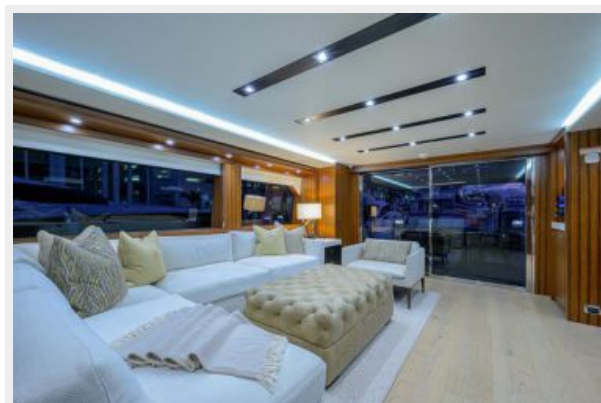
Brown Eyed GirlsSAM_6082



Brown Eyed GirlsSAM_6085



Brown Eyed Girls_Salon4



Brown Eyed Girls_Salon5



Brown Eyed Girls_Salon3



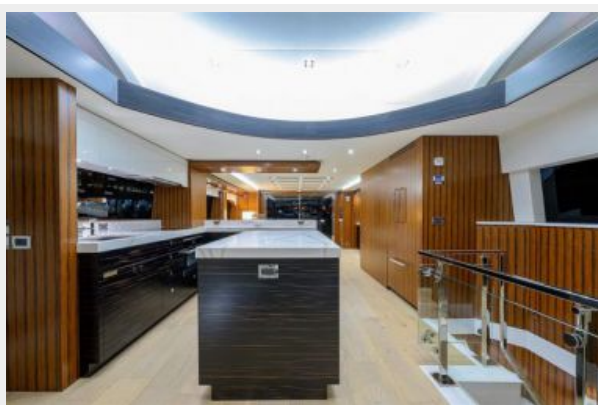
Brown Eyed Girls_Galley1



Brown Eyed Girls_Galley2



Brown Eyed Girls_Galley6



Brown Eyed Girls_Galley8



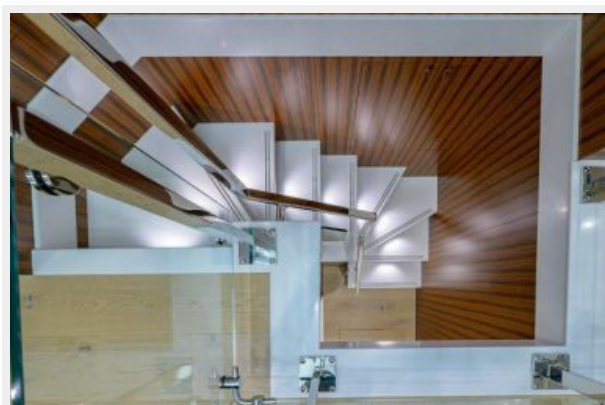
Brown Eyed Girls_Day Head1



Brown Eyed Girls_Dinette2



Brown Eyed Girls_Hallway2



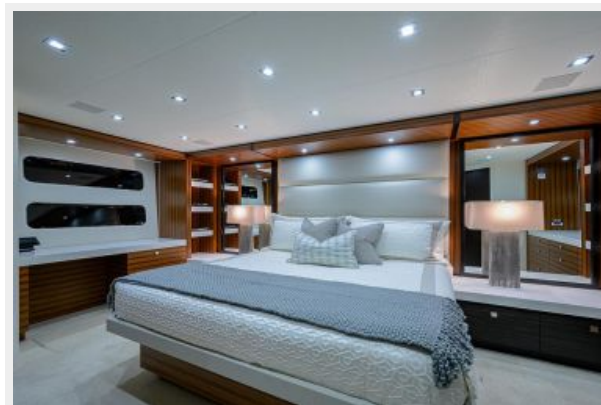
Brown Eyed Girls_Hallway3



Brown Eyed Girls_Laundry1



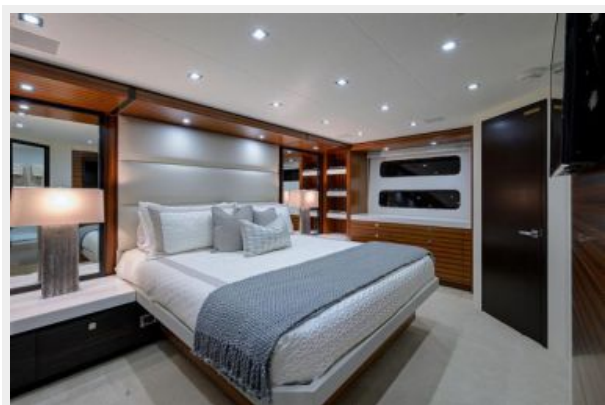
Brown Eyed Girls_Master Stateroom2



Brown Eyed Girls_Master Stateroom10



Brown Eyed Girls_Master Stateroom8



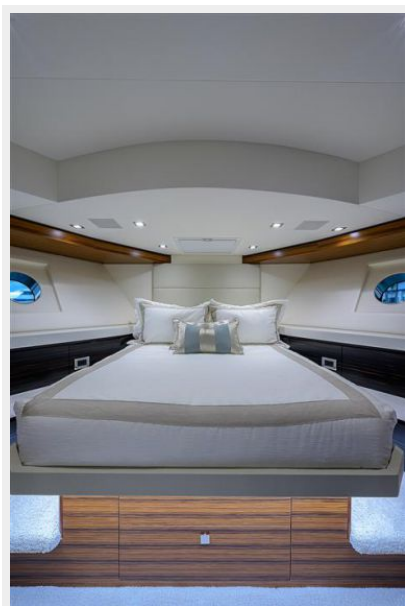
Brown Eyed Girls_Master Head2



Brown Eyed Girls_Master Head3



Brown Eyed Girls_Forward Stateroom2



Brown Eyed Girls_Forward Stateroom3



Brown Eyed Girls_Forward Head1



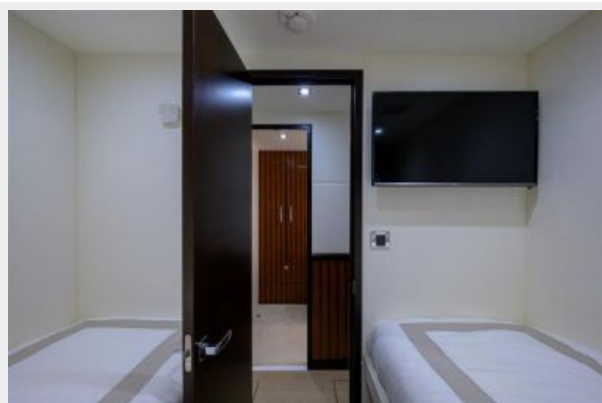
Brown Eyed Girls_Port Guest Stateroom2



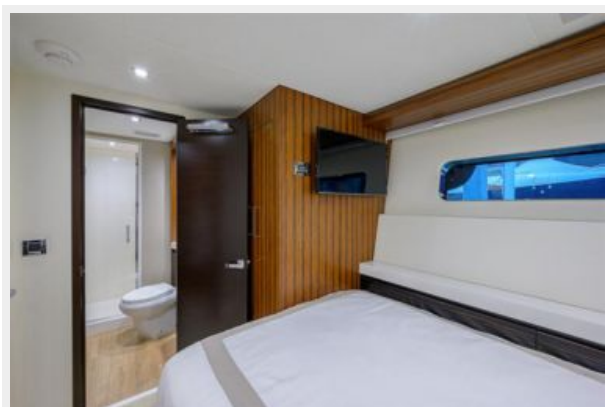
Brown Eyed Girls_Starboard Guest Stateroom2



Brown Eyed Girls_Port Guest Stateroom5



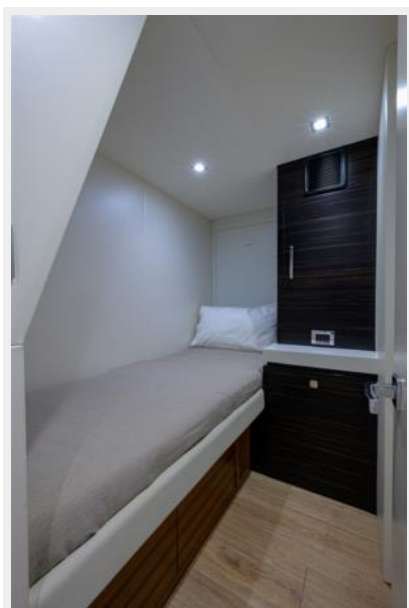
**Brown Eyed Girls_Starboard Guest
Stateroom5**



Brown Eyed Girls_Guest Head1



Brown Eyed Girls_Crew Quarters1



Brown Eyed Girls_Crew Quarters2



Brown Eyed Girls_Crew Quarters4



Brown Eyed Girls_Crew Quarters5



Brown Eyed Girls_Crew Quarters6



Brown Eyed Girls_Engine Room1



Brown Eyed Girls_Engine Room9



Brown Eyed Girls_Engine Room5



Brown Eyed Girls_Swim Platform3



Brown Eyed Girls_Swim Platform1



Brown Eyed Girls_Swim Platform4



КОНТАКТЫ

Андрей Шестаков (Andrey Shestakov) – ведущий яхтенный брокер отдела продаж яхт и судов компании Shestakov Yacht Sales Inc. Официальный представитель Shestakov Yacht Sales Inc. для русскоговорящих клиентов в центральном офисе компании в Майами/Форт Лодердейл/Флорида/США.

Контактная информация

Email: andrey@shestakovyachtsales.com

Web: shestakovyachtsales.com

Телефоны

Краснодарский край: **+7(918)465-66-44**

США, Майами, Флорида: **+1(954)274-4435**

Время работы

Понедельник – Суббота: **9:00 - 21:00**
EDT

Воскресенье: **Закрито**

Адрес



Harbour Towne Marina, 850 NE 3rd St,
STE 213, Dania, FL 33004