

DIAMOND GIRL — JOHNSON



Судостроитель: JOHNSON

Год постройки: 2008

Модель: Моторная яхта

Цена: **ЦЕНА ЯХТЫ ПО ЗАПРОСУ**

Местонахождение: United States

Длина общая: 103' 0" (31.39m)

Ширина: 23' 6" (7.16m)

Макс. осадка: 7' 1" (2.16m)

Крейс. скорость: 18 Kts. (21 MPH)

Макс. скорость: 20 Kts. (23 MPH)

Купить **DIAMOND GIRL — JOHNSON** а также выбрать подходящую вам яхту из нашего каталога яхт вам поможет опытный яхтенный брокер Андрей Шестаков. На сегодняшний день компания **Shestakov Yacht Sales Inc.** имеет большое количество яхт в собственном списке продаж, а также тесно сотрудничает со всеми крупными яхтенными производителями по всему миру.

Для того чтобы купить яхту **DIAMOND GIRL — JOHNSON** а также проконсультироваться по любому вопросу связанному с покупкой, продажей, чартером яхт позвоните по телефону **+7(918)465-66-44**.

ОГЛАВЛЕНИЕ

ОГЛАВЛЕНИЕ	2
ХАРАКТЕРИСТИКИ	7
Обзор	7
Основная информация	7
Размеры	7
Скорость, вместимость и масса	7
Размещение	8
Корпус и палуба	8
Информация о двигателе	8
ПОДРОБНОЕ ОПИСАНИЕ	9
NOTE:	9
Accommodations	9
Walkthrough	9
Salon	9
Salon Dining	10
Galley	10
Master/Day Head	10
Lower Accommodations	11
VIP	11
Midship Port Side Guest Cabin	11
Port Side Guest Cabin	12
Starboard Side Guest Cabin	12
Pilothouse	12
Upper Deck / Flybridge	12
Lower Aft Deck	13
Swim Platform	13
Crew Quarters	13
Main Deck	13

Engine Room	14
Electrical	15
Navigation Electronics	15
Overview	16
Disclaimer	16
Исключения	16
Отказ от ответственности	16
ФОТОГРАФИИ	18
Salon Looking Forward	18
Salon Looking Aft to Port	18
Salon Looking Aft to Starboard	18
Salon Forward	18
Bar Detail	18
Bar Forward in Salon	18
Galley	19
Starboard Side Main Deck Companionway	19
Main Deck Day Head	19
Master Looking Forward	19
Master Looking Aft	20
Master Looking Aft	20
Master Looking Forward	20
Master with Electric Drapes Closed	20
Master Head Looking Forward	20
Master Head Looking Aft	20
Master Shower	21
Private Master Head	21
Lower Companionway	21
Lower Companionway	21
VIP Looking Forward	22

VIP to Port	22
VIP to Starboard	22
VIP Head	22
Midship Twin Head	22
Midship Twin Cabin	22
Midship Twin Head	23
Portside VIP Looking Aft	23
Portside VIP Looking Forward	23
Portside VIP Looking Inboard	23
Portside VIP Head	24
Portside VIP Shower	24
Starboard Side VIP Looking Aft	24
Starboard Side VIP Looking Forward	24
Starboard VIP Shower	25
Starboard Side VIP Looking Inboard	25
Pilothouse	25
Helm	25
Pilothouse Settee	25
Helm	25
Helm Area	26
Portside Forward Seating Looking Forward	26
Portside Forward Seating Looking Aft	26
Portside Bar	26
Bar Detail	26
Bar Detail	26
Bar Looking to Starboard	27
Starboard Side Settee	27
Jacuzzi Tub	27
Jacuzzi Tub Looking Forward	27

Jacuzzi Area Opening in Hardtop	27
Jacuzzi Tub Looking Aft	27
Starboard Side Sun Bed	28
Starboard Side Sun Bed	28
Portside Dining Looking Aft	28
Portside Dining Looking Forward	28
Sun Deck Aft Looking Forward	28
Sun Deck Looking Aft	28
Aft Seating	29
Sun Deck Aft From Above	29
Aft Deck to Starboard	29
Aft Deck to Port	29
Aft Deck	29
Aft Deck	29
Aft Deck	30
Aft Deck	30
Bow Area	30
Bow Area	30
Wide Side Decks	30
Bow Area	30
Alternate Profile	31
Alternate Profile	31
Alternate Profile	31
Alternate Profile	31
Bow	31
Bow Quarter	31
Bow Quarter	32
Alternate Profile	32
Alternate Profile	32

Alternate Profile	32
At Rest	32
At Rest	32
Bow	33
Stern Quarter	33
Alternate Profile	33
Bow Quarter	33
Alternate Profile	33
Flybridge Detail	33
Hardtop Detail	34
Sun Deck Detail	34
Sun Deck From Above	34
Sun Deck From Above	34
Layout	34
КОНТАКТЫ	35
Контактная информация	35
Телефоны	35
Время работы	35
Адрес	35

ХАРАКТЕРИСТИКИ

Обзор

A truly custom yacht. She has been maintained to the highest standards regardless of the cost by the original owner. During the past 2 years the following upgrades and changes have been made: New appliances, electronics have been updated, including Flir night vision, all exterior cushions have been replaced, also new weather covers, all new Fabrica carpets installed thru out the vessel and complete new teak decks. The owner just doesn't have the time to enjoy her as much as they would like.

Consideration will be taken for, possible smaller trade and all offers will be considered.

Основная информация

Тип судна: Моторная яхта

Подкатегория: Raised Pilothouse

Модельный год: 2008

Год постройки: 2008

Страна: United States

Верх: Hardtop

Размеры

Длина общая: 103' 0" (31.39m)

Длина по ватерлинии: 100' 0" (30.48m)

Ширина: 23' 6" (7.16m)

Макс. осадка: 7' 1" (2.16m)

Скорость, вместимость и масса

Крейс. скорость: 18 Kts. (21 MPH)

Дальность на крейсерской скорости:
1600

Макс. скорость: 20 Kts. (23 MPH)

Вместимость воды: 600 Gallons

Вместимость сточного бака: 250 Gallons **Объем топливного бака:** 4000 Gallons

Размещение

Всего кают: 5

Всего ком. состава: 6

Корпус и палуба

Материал корпуса: Fiberglass

Материал палубы: Fiberglass

Комплектация корпуса: Semi-Displacement

Дизайнер корпуса: Dixon Yacht Designs

Дизайнер экстерьера: Dixon Yacht Designs

Дизайнер интерьера: Trevor James & Studio of New York

Информация о двигателе

Двигатели: 2

Производитель: MTU

Модель: 16V2000 M91

Тип двигателя: Inboard

Тип топлива: Diesel

ПОДРОБНОЕ ОПИСАНИЕ

NOTE:

CUSTOM RAISED PILOTHOUSE WITH ON DECK MASTER AND EXTENDED SWIM PLATFORM.

As you peruse thru this listing you will realize how much effort has been spent to make this vessel special and one of a kind. A truly custom yacht. She has been maintained to the highest standards regardless of the cost by the original owner. During the past 2 years the following upgrades and changes have been made: New appliances, electronics have been updated, including Flir night vision, all exterior cushions have been replaced, also new weather covers, all new Fabrica carpets installed thru out the vessel and complete new teak decks. The owner just doesn't have the time to enjoy her as much as they would like. Consideration will be taken for, possible smaller trade and all offers will be considered.

Accommodations

Sleeps eleven in FIVE beautifully appointed ensuite Staterooms. Layout includes a stunning on deck master separately located from all other guests suites on the forward main deck with a panoramic 270° forward view. The four spacious guest suites are all located on the lower deck. All guest staterooms are ensuite, complete with updated flat screen TV's, separate SAT receivers (North America and South America), stereo systems, telephones etc. The VIP is as large or larger than most masters of a yacht this size, a great plus for chartering, or accommodating family or friends. Aft is a large completely separate crew quarters for Captain and a crew of three. Four berths total, the crew enters thru a port side exterior aft door or thru an entrance on the transom.

Walkthrough

The vessel can be boarded by using two forward or aft boarding gates, port or starboard side. Also boarding aft via the swim platform and up either port or starboard teak steps to the protected aft deck in which you can then enter the main salon thru automatic opening stainless steel air doors. From the aft deck because of her wide beam (23.6') are port and starboard protected wide safe walk around side decks going forward to the bow with entry doors both port and starboard. The complete main deck is teak.

Salon

From the aft deck by a push of a button, (or can be set automatically) two stainless steel glass doors open simultaneously to the wide open space of the Main Salon. Fabulous large dark tinted windows, port and starboard with custom made woven sandalwood twig blinds surround the

Salon, a large center sycamore ceiling soffit with hidden indirect LED lighting gives of a nice soft glow throughout the entire room. To port is a custom sofa with coffee table, and two leather barrel chairs facing the starboard side for viewing the large pop-up flat screen TV. The forward part of the Salon hosts the salon bar fronted with real bone tile and is topped with back painted glass, with four leather stools. The bar stands in front of a back-lit wine library display flanked by two back lit floor to ceiling Lalique French crystal panels. The wet bar is fully equipped with new U-Line Fridge, icemaker, wine cooler, s/s sink, a marble counter, and a frosted glass top. Felt-lined Custom cabinets for Liqueur, crystal and glass storage are located in this area.

The Salon has a complete state of the art entertainment system with Bose surround sound and hidden speakers, I-pad docking system, receivers and DVD/CD system, and a new 49" SONY HD4D Flat TV.

Salon Dining

The dining area is integrated into the Main Salon at the aft starboard corner. A beautiful custom glass dining table accommodates newly reupholstered 8 dining chairs. There are also built in cabinets port and starboard for lots of storage for dishes, cups, saucers and cutlery etc. All the furniture is custom but not built in and removable.

Galley

Forward and to port from the salon you enter the carefully planned galley thru a pocket door with frosted glass panels with wood trim.

This attractive galley is extremely functional and has:

- Whirlpool Fridge
- Wolf induction stove top (2019)
- Delunghi espresso coffee maker (2019)
- GE Profile dishwasher, convection microwave (2018)
- S/S double sink
- Corian countertops, pass thru window
- Lots of storage and marble sole for easy cleaning.

There is also a separate exterior entrance door to the galley so the crew does not have to enter thru the Salon while owners or guests are entertaining or dining.

Master/Day Head

Walking forward thru the Salon, you will enter on the starboard side thru a granite soled foyer; to port is a day head featuring a granite counter top, glass vessel sink above the counter and vanity

below. The walls are covered with a silk wallcovering accentuated with thin strips of sycamore. The floor is marble with embedded circles of onyx. Walking forward of the day head thru a privacy door you will enter one of the main features of this yacht, which is a luxurious split level owner suite, usually found on much larger vessels. The main deck Master enjoys complete privacy, as all other staterooms are on the lower deck. With 270° forward views, from your island King master berth you can also view a 42" SONY 4K flat screen TV that will pop up as desired. Features include: Custom cabinets with built in vanities port and starboard, built in drawers on each side of the king bed, also a built-in small beverage cooler and an owners' safe.

Forward of the TV is the stunning lower level Master bathroom. Entering down a shallow sweeping marble staircase you will find a half moon his and hers vanity complete with marble counter tops, full wrap around mirrors with concealed lighting, nice his & hers deep sinks and custom cabinetry lined with stunning real mother of pearl insets throughout. Port and starboard are his and hers cedar line closets, a large tubular shower to starboard and toilet room to port.

Lower Accommodations

A teak stairwell with stainless steel handrails on the starboard side between the Salon and Master lead below to the accommodations for nine additional guests in four ensuite staterooms. All the guest suites feature sycamore woods, fine marble, lots of closet space in large cedar lined closets and drawer storage, shoji screens, entertainment systems with flat screen TV with SAT receiver, telephone intercom and music systems. The main foyer features a beautiful built-in curved bone display niche that creates the ideal space for a favorite piece of art or flower arrangement, this also holds a library of books, CD and DVD's. A second full size Miele washer and dryer laundry with storage is tucked away behind full opening pocket panels.

VIP

Forward is the VIP. This could be a Master on this yacht or any other similar sized vessel. The full beam VIP has an island King berth with a designer fabric head board, and a built in settee, large cedar lined closets, storage drawers under the bed and plenty of cabinet space. This suite has a surround system with built in ceiling speakers, SAT TV and a 32" flat screen built into aft bulkhead. This cabin also has a built in safe. The VIP bathroom is oversize with a huge shower, marble counter tops and floors.

Midship Port Side Guest Cabin

Just aft of the VIP is a twin lower berth cabin entered from the aft end. A pullman berth is located off the inboard bulkhead. Shoji screens conceal the opening port lights. Other features in this cabin include a flat panel TV, SAT TV tuner, cedar lined hanging locker and a private safe. The cabin has a private marble lined head and shower.

Port Side Guest Cabin

Next aft is a guest cabin with a Queen size athwartship VIP berth with storage under, a night stand, full hanging locker, ample storage cabinets, flat screen TV, a SAT TV tuner and three large portlights concealed behind Shoji screens behind the berth.

The private head has an oval vanity, stall shower, marble counter tops and sole and a large shower.

Starboard Side Guest Cabin

Opposite to starboard is a guest cabin with a Queen size athwartship VIP berth with storage under a night stand, full hanging locker, ample storage cabinets, flat screen TV, a SAT TV tuner and three large portlights concealed behind Shoji screens behind the berth.

The private head has an oval vanity, stall shower, marble counter tops and sole and a large shower.

Pilothouse

The captain has a great view with the wrap around vertical windows while sitting in a Besenconi black leather helm chair. The fully custom control dash is well thought out, with all electronic and manual controls easily accessible and within arm's reach. All navigation charts and radar are shown on large flat screens, as well as a complete CC camera system thru-out the yacht. A small raised seating area and teak table behind the captain is a great place for viewing while cruising. You can also enter the flybridge/upper deck from the pilothouse. All electronics have been recently updated.

Upper Deck / Flybridge

The open flowing upper bridge is HUGE! Whether dining, entertaining or just plain relaxing in the sun, or in the shade enjoying a cool breeze under the protective hard top this deck has it all. This deck is custom built (you won't see another like it). Amenities include Jacuzzi, starboard side settee, complete entertainment system with Bose speakers, I-pad dock including protected flat screen TV with Satellite that pops down out of the hardtop, sun pad, fully equipped wet bar with four polished stainless steel stools, forward protected teak dining table with teak deck chairs, huge aft wrap around settee with two Santa Barbara mahogany shade umbrellas, sunpads, chaise lounges etc. The upper deck has new teak decks, and a complete steering station with all state of the art electronics, four captain's chairs two to port as well as two to starboard, a great place to sit while cruising. A clear vinyl enclosure keeps the rain and cold breezes away. There are Sunbrella covers that protect all chairs, tables, bar, settees, jacuzzi etc.

Lower Aft Deck

The lower aft deck is another great spot for dining or relaxing. It has a built in settee that wraps around the transom. In front of the settee is a large teak dining table that can slide forward and aft for easy seating. There are also 3 loose teak deck chairs. This table can seat approximately ten guests. The deck is teak and is protected with a full hard top overhang. All ceiling lights can be operated with dimmers. Also a 20" flat screen TV that drops down from the ceiling, complete sound system with Bose ceiling speakers. There are two back down stations (port and starboard) with full rudder, transmission, and engine controls, also two electric capstans for easy docking and line handling. You may enter the aft deck on either side of the vessel (locking boarding doors), or from the swim platform as there are teak boarding steps on either side of the transom. A wide teak staircase with stainless steel hand rail on the port side will guide you to the upper deck/flybridge. The lower deck has lots of storage. On each side of the sliding polished stainless steel doors there are two small shoe lockers, as well as the transom settee has storage under the seats.

Swim Platform

This vessel has an extended swim platform that can accommodate a 16' tender or twin Jet skis. The tender is launched by a updated 1600 lb. Quicklift hydraulic davit, concealed in the transom. By a push of a button a hydraulic door opens the top of the transom, and the arm of the davit controlled by a hand held remote swings out, and easily launches the tender. The polished stainless steel tender chocks are removable and makes the extended swim platform another great place to play once the tender is launched! This system is easy as the tender is close to the water, but best of all it saves a tremendous amount of space and effort as the davit and tender are not sitting up on the upper deck.

Crew Quarters

Crew quarters can be entered thru the main deck port side aft door or the transom door meaning the crew does not have to enter the interior of the yacht. The crew has a galley area with microwave, Subzero Fridge and freezer drawers. Three cabins, one is ensuite for Captain with full size berth. The other two cabins have a total of 3 bunks. They are separated with a full bathroom and shower that both staterooms share. There is also a second washer and dryer and Captain's safe.

Main Deck

With a wide beam of 23' 6" the main deck has wide safe walk-arounds with polished stainless steel magnum yacht 3 1/2" hand rails. Lots of bow seating with Bose speakers forward for easy listening.

- All decks have Cantalupe and Lutron lighting with dimmers
- Teak Decks (Replaced in 2018)
- (2) Maxwell vwc6000 Hydraulic Windlass, remote control, all updated
- (2) 250 lb. anchor S/S, portside 300ft. 5/8" chain & stbd side 400' with fresh water washdowns
- Forward deck storage, 4 boarding gates, 2 side doors
- (8) underwater lights
- Fresh water deck wash downs forward and aft
- Teak swim platform, S/S swim ladder, hot-cold shower
- (2) Maxwell electric capstans aft deck
- Heavy duty polished stainless steel cleats and fairleads with rollers
- Fuel fills on port and starboard, complete vessel can be fueled from either side
- Fire hose with pump

Engine Room

- OPTIONAL Twin 2000 HP MTU 16V2000 M91
- Blue Line electronic monitoring system
- Twin ZF Gear Box ZF 2555A
- Racor fuel filters Engine/Generators with pressure gauges and alarms
- Hynautic Power steering
- Twin PTO [both engines]
- TRAC 16" 50HP Bow and Stern Thrusters
- A.B.T. TRAC Digital Stabilizers 9' fins
- Van Cappellen design engine room sound insulation
- MTU Electronic engine control system 4-fixed stations
- 110V Fluorescent lights, DC LED Dome lights
- SEA FIRE FM-200 Automatic fire system with auto engines & vent shutdown
- Updated (2019) Delta "T" blowers and moisture eliminator 600-p/t4 with color LCD screen thermostatically controlled adjustable speed drive
- Overhead s/s grab rail
- High water bilge alarms
- Dockside fresh water inlet / sink
- CO2 Fire Extinguishing system Sea Fire FM-200
- Twin day fuel tanks (port and starboard) 720 gal each with sight gauges
- Forward and aft fuel tanks
- Complete fuel capacity 4000+ gallons
- Reverso oil change system
- TUTHILL fuel transfer pump
- Cruise Air chill water A/C system/ digital control. (Updated)
- (3) 60000 btu chillers (Updated)
- New 2018 (16) air handlers thru out the vessel
- Generators with sound shields

- Rule sump pump (3) rule bilge pumps(7) w/ alarms
- (2) Torrid stainless steel 40 gallon water heaters w/ circulating pump
- Watermaker, 2500 G.P.D. watermaker/with fresh water flush
- Headhunter tidal wave aerobic biological sewage treatment system - 200 GPD system
- 200 gallon holding tank (main)
- 50 gallon holding tank (crew)

Electrical

- 110-220 Volt supply from generator or shore power
- (2) Aft Glendinning cablemaster/100 amp power cords
- Hubbell 100 amp outlet (forward)
- Twin 40 KW Northern Lights (2016)/sound shields
- 100 amp battery charger
- 40 amp battery charger
- 30 amp battery charger
- 100 amp 24v power supply (2)
- (2) Charles isolation boosting transformers (100 amp)
- (4) 225 amp gel cell service batteries
- (4) 225 amp gel cell engine batteries
- (2) 225 amp gel cell generator batteries
- Vimar GFI protection on required outlets

Navigation Electronics

- Aqua signal international navigation lights
- Simrad AP 25 autopilot 2 fixed stations
- Simrad rudder indicator (4 stations)
- Carlisle & Finch search light
- 2 Danforth 5" C580CA compass
- 3 ICOM 604 VHF marine radios - forward Bridge
- 2 ICOM radios M506 - Flybridge
- 1 ICOM SSB M802
- 2 Raymarine ST-60 Tri-Data
- 4 flat screen monitors (Nauticomp, JRC)
- 2 JRC 5300 96 mile radars - 1 is inoperable
- JRC jhs-182 AIS
- Simrad IS15 wind monitor
- Elbex CCTV switcher
- New FLIR night vision scope

Overview

This Johnson 103 is by far the Queen of the Johnson fleet. With her strong unique styling, designed by International Award winning Naval Architect Bill Dixon of Dixon Yacht Designs. With the expertise of her owners and Interior Designers, Trevor James & Studio of New York, the impeccable interior, and unique upper deck layout was developed.

Both interior and exterior social areas allow for tremendous flexibility in entertaining, by well thought out functional zoning. People viewing the vessel have often been surprised that the yacht is not larger than its length of 103'. The rich interior has light hand-picked configured sycamore with a full high gloss Varnish, and only the best fabrics were chosen, stunning Lalique crystal panels along with other glass work, combined with teak, marble, and granite, onyx, bone, mother of pearl, silk, and fine leather compliment the surrounding custom cabinetry throughout the vessel. She has been maintained to the highest level by her one owner and her experienced full time captain and crew since new. She is U.S. flagged, and all duties have been paid. Also the state of Florida has a great sales tax rule for Florida buyers.

Disclaimer

The Company offers the details of this vessel in good faith but cannot guarantee or warrant the accuracy of this information nor warrant the condition of the vessel. A buyer should instruct his agents, or his surveyors, to investigate such details as the buyer desires validated. This vessel is offered subject to prior sale, price change, or withdrawal without notice.

M/Y Diamond Girl has a very successful chartering history and charters are chosen discreetly. She could be quite busy should a new owner choose. Her unique layout (on-deck Master) & (Master VIP), a yacht of this design is very much in demand.

Being chartered lightly does not in any way take away her impeccable like new "5 Star" interior or exterior appearance.

Replacement Value \$7.5 Million plus.

Исключения

При продаже яхты исключаются личные вещи владельца.

Отказ от ответственности

Компания предоставляет описание судна или яхты добросовестно, но не может гарантировать точность этой информации, а также не ручается за техническое состояние. Покупатель должен проинструктировать своих агентов или оценщиков исследовать представленную информацию более подробно, по собственному желанию.

Продажа судна или яхты, изменение цены или снятие с продажи будет происходить без предварительного уведомления.

ФОТОГРАФИИ

Salon Looking Forward



Salon Looking Aft to Port



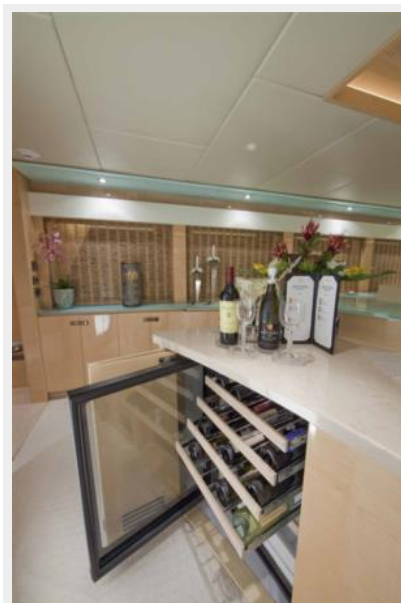
Salon Looking Aft to Starboard



Salon Forward



Bar Detail



Bar Forward in Salon



Galley



Starboard Side Main Deck Companionway



Main Deck Day Head



Master Looking Forward



Master Looking Aft



Master Looking Aft



Master Looking Forward



Master with Electric Drapes Closed



Master Head Looking Forward



Master Head Looking Aft



Master Shower



Private Master Head



Lower Companionway



Lower Companionway



VIP Looking Forward



VIP to Port



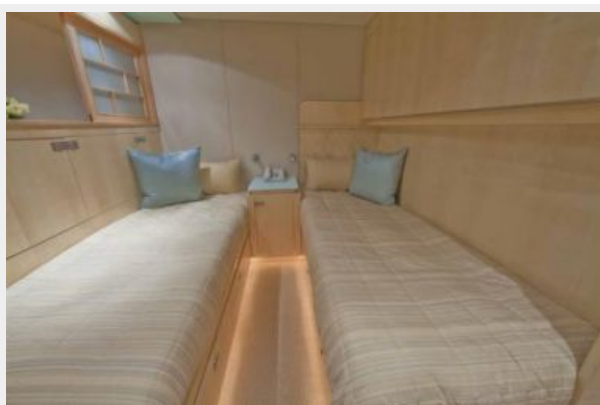
VIP to Starboard



VIP Head



Midship Twin Cabin



Midship Twin Head



Midship Twin Head



Portside VIP Looking Aft



Portside VIP Looking Forward



Portside VIP Looking Inboard



Portside VIP Head



Portside VIP Shower



Starboard Side VIP Looking Aft



Starboard Side VIP Looking Forward



Starboard Side VIP Looking Inboard



Starboard VIP Shower



Pilothouse



Helm



Pilothouse Settee



Helm



Helm Area



Portside Forward Seating Looking Forward



Portside Forward Seating Looking Aft



Portside Bar



Bar Detail



Bar Detail



Bar Looking to Starboard



Starboard Side Settee



Jacuzzi Tub



Jacuzzi Tub Looking Forward



Jacuzzi Area Opening in Hardtop



Jacuzzi Tub Looking Aft



Starboard Side Sun Bed



Starboard Side Sun Bed



Portside Dining Looking Aft



Portside Dining Looking Forward



Sun Deck Aft Looking Forward



Sun Deck Looking Aft



Aft Seating



Sun Deck Aft From Above



Aft Deck to Starboard



Aft Deck to Port



Aft Deck



Aft Deck



Aft Deck



Aft Deck



Bow Area



Bow Area



Bow Area



Wide Side Decks



Alternate Profile



Alternate Profile



Alternate Profile



Alternate Profile



Bow



Bow Quarter



Bow Quarter



Alternate Profile



Alternate Profile



Alternate Profile



At Rest



At Rest



Bow



Stern Quarter



Alternate Profile



Bow Quarter



Alternate Profile



Flybridge Detail



Hardtop Detail



Sun Deck Detail



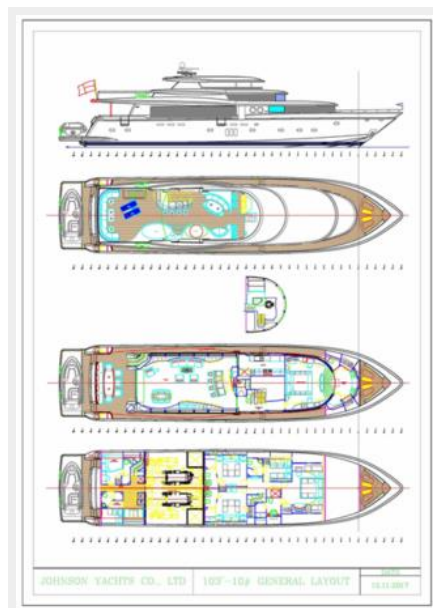
Sun Deck From Above



Sun Deck From Above



Layout



КОНТАКТЫ

Андрей Шестаков (Andrey Shestakov) – ведущий яхтенный брокер отдела продаж яхт и судов компании Shestakov Yacht Sales Inc. Официальный представитель Shestakov Yacht Sales Inc. для русскоговорящих клиентов в центральном офисе компании в Майами/Форт Лодердейл/Флорида/США.

Контактная информация

Email: andrey@shestakovyachtsales.com

Web: shestakovyachtsales.com

Телефоны

Краснодарский край: **+7(918)465-66-44**

США, Майами, Флорида: **+1(954)274-4435**

Время работы

Понедельник – Суббота: **9:00 - 21:00**
EDT

Воскресенье: **Закрито**

Адрес



Harbour Towne Marina, 850 NE 3rd St,
STE 213, Dania, FL 33004