

DISTRACTOR — HATTERAS



Builder: HATTERAS

Year Built: 1992

Model: Motor Yacht

Price: PRICE ON APPLICATION

Location: United States

LOA: 70' 0" (21.34m)

Beam: 18' 2" (5.54m)

Min Draft: 5' 6" (1.68m)

Our experienced yacht broker, Andrey Shestakov, will help you choose and buy a yacht that best suits your needs **Distractor — HATTERAS** from our catalogue. Presently, at Shestakov Yacht Sales Inc., we have a wide variety of yachts available on our sale's list. We also work in close contact with all the big yacht manufacturers from all over the world.

If you would like to buy a yacht **Distractor — HATTERAS** or would like help answering any questions concerning purchasing, selling or chartering a yacht, please call **+1(954)274-4435**

TABLE OF CONTENTS

TABLE OF CONTENTS	2
SPECIFICATIONS	7
Overview	7
Basic Information	7
Dimensions	7
Speed, Capacities and Weight	7
Accommodations	7
Hull and Deck Information	8
Engine Information	8
DETAILED INFORMATION	9
Vessel Overview	9
Salon	10
Galley/Dinette	11
Lower Helm Deck	11
Bow Guest Stateroom	12
Bow Stateroom Head	12
Port Guest Stateroom 1	12
Port Guest Stateroom 2	12
Guest/Day Head	13
Guest Head 2	13
Master Stateroom	13
Master Stateroom Head	13
Engine/Mechanical	14
Engine Rooms	14
Main Deck/Misc Equipment	14
Bridge Deck	15
Electronics/Nav Equipment	15
Tender	16

Exclusions	16
Disclaimer	16
PHOTOS	18
DSC_6195	18
DSC_6197	18
DSC_6199	18
DSC_6209	18
DSC_6208	18
DSC_6206	18
70 Hatteras Distractor (2)	19
DSC_6194 (2)	19
DSC_6191 (2)	19
70 Hatteras Distractor 6092 (2)	19
DSC_6097 (2)	19
DSC_6188	19
DSC_6183	20
DSC_6186	20
DSC_6187	20
DSC_6098 (2)	20
DSC_6102 (2)	20
DSC_6099 (2)	20
DSC_6100 (2)	21
DSC_6101 (2)	21
DSC_6103 (2)	21
DSC_6104 (2)	21
DSC_6105 (2)	21
DSC_6106 (2)	21
DSC_6107 (2)	22
DSC_6109 (2)	22

DSC_6110 (2)	22
DSC_6111 (2)	22
DSC_6112 (2)	22
DSC_6113 (2)	22
DSC_6114 (2)	23
DSC_6115 (2)	23
DSC_6116 (2)	23
DSC_6117	23
DSC_6118 (2)	23
DSC_6119 (2)	23
DSC_6120 (2)	24
DSC_6121 (2)	24
DSC_6122 (2)	24
DSC_6131	24
DSC_6132	24
DSC_6134	24
DSC_6135 (2)	25
DSC_6136 (2)	25
DSC_6137 (2)	25
DSC_6138 (2)	25
DSC_6139 (2)	25
DSC_6140 (2)	25
DSC_6142	26
DSC_6143 (2)	26
DSC_6144 (2)	26
DSC_6161	26
DSC_6147 (2)	26
DSC_6162 (2)	26
DSC_6148	27

DSC_6149	27
DSC_6150	27
DSC_6152	27
DSC_6153	27
DSC_6154	27
DSC_6155	28
DSC_6156	28
DSC_6168	28
DSC_6163	28
DSC_6169	28
DSC_6166	28
DSC_6164	29
DSC_6170	29
DSC_6171	29
DSC_6173	29
DSC_6174	29
DSC_6124 (2)	29
DSC_6125 (2)	30
DSC_6126 (2)	30
DSC_6127 (2)	30
DSC_6128 (2)	30
DSC_6129 (2)	30
DSC_6130 (2)	30
DSC_6175	31
DSC_6176	31
DSC_6178	31
DSC_6179	31
CONTACTS	32
Contact details	32

Telephones	32
Office hours	32
Address	32

SPECIFICATIONS

Overview

70 Hatteras Cockpit Motoryacht 1992 with Detroit 1271s and twin generators. This vessel is maintained by a full time Captain and has a fresh bottom job in 2019. This well maintained vessel has NAIAD stabilizers, hydraulic bow thruster and includes a 1998 Nautica RIB. Interior has been updated along with the electronics.

ASKING \$399,000

Basic Information

Category: Motor Yacht

Model Year: 1992

Year Built: 1992

Country: United States

Vessel Top: Bimini Top

Fly Bridge: Yes

Cockpit: Yes

Dimensions

LOA: 70' 0" (21.34m)

Beam: 18' 2" (5.54m)

Min Draft: 5' 6" (1.68m)

Speed, Capacities and Weight

Displacement: 103000 Pounds

Water Capacity: 345 Gallons

Fuel Capacity: 1596 Gallons

Accommodations

Total Cabins: 4

Total Heads: 4

Hull and Deck Information

Hull Material: Fiberglass

Deck Material: Composite Fiberglass

Hull Configuration: Modified V-Hull

Hull Color: White

Hull Finish: Fiberglass

Engine Information

Engines: 2

Manufacturer: Detroit Diesel

Model: 12V71

Engine Type: Inboard

Fuel Type: Diesel

DETAILED INFORMATION

Vessel Overview

This 1992 Hatteras 70 ft. Cockpit Motoryacht has the Detroit 1271TA main engines and twin Onan 20kw generators. The Distractor has been owned by the current owner for approximately 7 years and it has been operated and maintained by the same full time Captain for this entire period. The current owner has done numerous upgrades to include new Garmin Chartplotters, Radar, bottom sounder, VHF and FLIR. Interior upgrades include new carpet, salon furnishings and updated bulkhead coverings.

The vessel just received fresh bottom paint in November 2019 along with buffing and polishing of the hull sides. The aft deck davit was just serviced and the 1998 Nautica tender has newer tubes and a 50 hp Yamaha outboard that is custom painted.

The Distractor has NAIAD stabilizers for a stable ride when underway and a hydraulic bow thruster with a cockpit wing station for ease of docking. The Hatteras Cockpit Motoryacht design offers all of the space and livability of a motoryacht with the added feature of a 5 ft. cockpit which makes access to the water for fishing, diving or swimming very easy.

The bridge deck is huge and features full electronics at the helm, extensive seating and a large freezer located under the aft portside seating area. All of the bridge deck seating area is covered by a large bimini top. A wet bar with a refrigerator and an electric grill is conveniently located aft of the helm area. The Nautica tender is stored aft on the bridge deck and is launched by a low profile 1000# davit. Access to the bridge deck is via an internal stairway from the lower helm deck. An external ladder from the cockpit offers direct access to the tender on the bridge deck.

The main salon area can be entered from the aft door leading in from the cockpit. Upon entering the salon there is couch seating on the port side and two single chair seating on the starboard side. All the way forward on the starboard side in the salon is a large wet bar with glass storage and refrigeration. On the port side is a dining table. The salon area is very large and is open for an open and airy feel.

Continuing forward in the salon there is the entrance in the forward bulkhead to the dinette which features a large teak table and comfortable seating. Located directly across from the dinette on the port side is the large and well equipped galley. All of the appliances are home sized and include a full sized oven, refrigerator and dishwasher.

Moving forward a bulkhead separates the galley/dinette area from the lower helm. The lower helm features full electronics, a large chart counter top area and a comfortable helm bench seat. There is an interior staircase located on the starboard side of the helm deck which leads to the bridge. A large door located port and starboard leads directly to the wide side decks leading to the forward side decks and the bow.

A staircase located to the starboard of the helm leads to the lower deck level accommodations.

Located all the way forward is the bow stateroom. This private stateroom features over/under bunks and a private head with shower.

Moving aft on the port side is another guest stateroom with two single berths. Continuing aft on the port side there is a third guest stateroom with two single berths. Aft from the forward stateroom on the starboard side are two additional heads with stall showers and a washer and dryer.

Continuing aft there is a center companionway leading to the master stateroom. This companionway passes between the two separate engine rooms which are located port and starboard. Upon entering the large master stateroom area there is a large office or sitting area that features extensive storage with a very large closet. Directly across on the starboard side is the private master head with shower stall and molded tub. Then continuing aft is a large king bed located on the aft bulkhead with storage dressers port and starboard.

With over 1500 gallons of fuel, a versatile layout and solid seakeeping ability this model makes an excellent long range cruiser, live aboard or charter vessel.

ASKING \$399,900

Salon

- * Large and open design with large side windows
- * Updated carpet and furniture
- * Aft door opening onto mezzanine and cockpit
- * Couch seating on port side aft
- * Chair seating on starboard side aft with table
- * Dining table with chairs located port side forward
- * Refreshment bar area located starboard side forward. Counter top lifts to reveal glass and bottle storage beneath. Refrigeration and ice maker concealed in cabinet along with stereo and Sat TV equipment.
- * Television - 52" LG 3D
- * Wine Cooler
- * Air conditioning
- * Direct access forward to dinette and galley

Galley/Dinette

Galley located on port side main salon deck, forward of salon and aft of lower helm and is separated from each by bulkheads

- * Double stainless steel sink basin
- * Garbage disposal - ISE
- * 4 burner electric stove top - Magic Chef
- * Oven - Whirlpool (located directly beneath stove top)
- * Full size refrigerator - Frigidaire
- * Microwave/Convection Oven - Sharp Carousel II
- * Dishwasher - Kitchen Aid
- * Trash Compactor - Kenmore

Dinette located directly across from galley on starboard side. Has large teak table and abundant seating.

Lower Helm Deck

- * Lower helm deck located forward of galley/dinette on the same level as salon
- * Full electronics package and engine controls at lower helm (see electronics section for full equipment list)
- * Large bench seating along helm aft bulkhead
- * Spiral stairway on starboard side leading to bridge deck
- * Large doors, port and starboard allowing access to side deck and bow
- * Air conditioning
- * Stairs leading to lower accommodation deck located starboard side forward

Bow Guest Stateroom

- * Over/Under berths located starboard side of cabin
- * Storage cabinets
- * Hanging locker
- * Air conditioning
- * Television - RCA 24"
- * Private entrance to head on port side

Bow Stateroom Head

- * Private entry from bow stateroom
- * Vanity with sink and mirror
- * Toilet
- * Shower with separate stall

Port Guest Stateroom 1

- * Located port side just aft of bow stateroom head
- * Two single bunks positioned athwartships
- * Storage
- * Television - RCA 18"
- * Air conditioning

Port Guest Stateroom 2

- * Located on port side just aft of Guest stateroom 1
- * Two single berths positioned fore and aft
- * Hanging locker
- * Air conditioning

Guest/Day Head

* Located on lower deck, starboard side just forward of stairway to helm deck and directly across companionway from Guest stateroom 1.

* Vanity with sink and mirror

* Toilet

* Shower with separate stall

Guest Head 2

* Located in companionway just aft of stairway from helm deck and directly across from guest stateroom 2

* Vanity with sink and mirror

* Toilet

* Shower with separate stall

Master Stateroom

* Full beam master

* Large office/lounge area located in forward area port side

* King size bed located center line aft

* Storage drawers and cabinets port and starboard

* Air conditioning

* Television - Samsung 42" with DVD

* Private entrance to master head

Master Stateroom Head

* Located on starboard side forward within the master stateroom

* Vanity with sink and mirror

* Toilet

- * Separate shower stall with molded tub

Engine/Mechanical

- * Detroit 12V71TA @ 870 hp (2) Port approx 1876 hrs SMOH, Strb approx 1361 SMOH
- * ZF Transmissions
- * Onan 20 kw Generators (2) Forward unit approx 6600 hrs, Aft unit approx 3300 hrs
- * Cruisair air conditioning, 7 units for total of 97k BTU. Two units replaced 2019
- * Engine oil change pump
- * Glendenning Cablemasters
- * Watermaker Fresque 1000 gpd
- * Trim Tabs, Bennett
- * Spotlight Carlisle Finch
- * Spotlight ACR with controls at both helms

Engine Rooms

- * There is a port and starboard engine room which are separated by main companionway going to the master stateroom. Located just forward of master stateroom
- * Each engine room has fixed fire extinguishing system

Main Deck/Misc Equipment

- * Bow Pulpit
- * Windlass 24V with gypsy and chain wildcat. Controls at both helms and on deck. Rebuilt 2019
- * Bow Thruster 40 hp hydraulic Wesmar
- * Hydraulic Stabilizers, Naiad 254 with control panel at both helms. Rebuilt 2013
- * Sunlounge seating on bow with removable overhead sunshade
- * Bridge Radar Arch hinge mounted with hydraulic folding mechanism

- * Underwater Lights
- * Marquipt Tide Ride 7 step folding ladder
- * Marquipt Davit on bridge deck, 1000# capacity
- * Dual 50 Amp Shorepower Connections with additional connections forward
- * Mezzanine seating just aft of salon above cockpit
- * Cockpit houses wing station for docking
- * Transom Door
- * Lazarette storage
- * Custom removable sunshade for cockpit area

Bridge Deck

- * Interior stairway from helm deck to bridge deck
- * Bridge helm has full electronics and controls (see electronics section)
- * Helm and companion seats
- * Electric grill located aft of helm seating
- * Wet bar on port side includes refrigerator and ice maker
- * Large U shaped seating aft with freezer beneath port side seating
- * Storage under starboard side seating
- * Bimini top that covers entire seating area
- * Arch which folds down with hydraulic assistance
- * Tender storage aft of bridge seating
- * Marquipt 1000# davit
- * Ladder from mezzanine/cockpit area to tender storage area

Electronics/Nav Equipment

- * VHF ICOM IC-M602 lower helm

- * VHF ICOM IC-M604 Bridge helm
- * Garmin (2) GPS Map XSV7612 with Radar (72 mile), Bottom Sounder, Plotter, AIS, located at lower helm.
- * Garmin (2) GPS Map XSV7612 with Radar (72 mile), Bottom Sounder, Plotter, AIS located at bridge helm.
- * FLIR IR camera (displays on Garmin screens)
- * Autopilot Simrad AP25 located at lower helm
- * Autopilot Simrad AP26 located at bridge helm.
- * Depth Sounder Furuno RD-30
- * Compass 6" Ritchie Powerdamp (located at lower and bridge helms)
- * Engine Room Cameras that display through Garmin screens
- * Aft and side cameras that display through Garmin screens
- * Fusion Stereo system with remote stations
- * KVH SAT TV - 5 receivers
- * Navigational electronics updated in 2018/2019

Tender

- * 1998 Nautica 13'8" RIB with Yamaha 50 hp
- * New Tubes 2018
- * Garmin Chartplotter/Sounder
- * VHF

Exclusions

Owner's personal belongings.

Disclaimer

The Company offers the details of this vessel or yacht in good faith but cannot guarantee or warrant the accuracy of this information nor warrant the condition of the vessel. A buyer should

instruct his representatives, agents, or his surveyors, to investigate such details as the buyer desires validated. This vessel or yacht is offered subject to prior sale, price change, or withdrawal without notice.

PHOTOS

DSC_6195



DSC_6197



DSC_6199



DSC_6209



DSC_6208



DSC_6206



70 Hatteras Distractor (2)



DSC_6194 (2)



DSC_6191 (2)



70 Hatteras Distractor 6092 (2)



DSC_6097 (2)



DSC_6188



DSC_6183



DSC_6186



DSC_6187



DSC_6098 (2)



DSC_6102 (2)



DSC_6099 (2)



DSC_6100 (2)



DSC_6101 (2)



DSC_6103 (2)



DSC_6104 (2)



DSC_6105 (2)



DSC_6106 (2)



DSC_6107 (2)



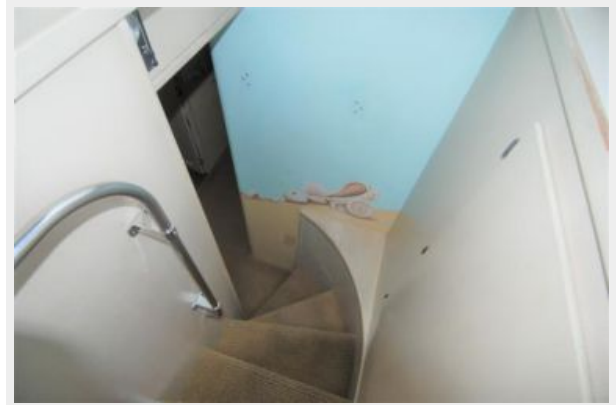
DSC_6109 (2)



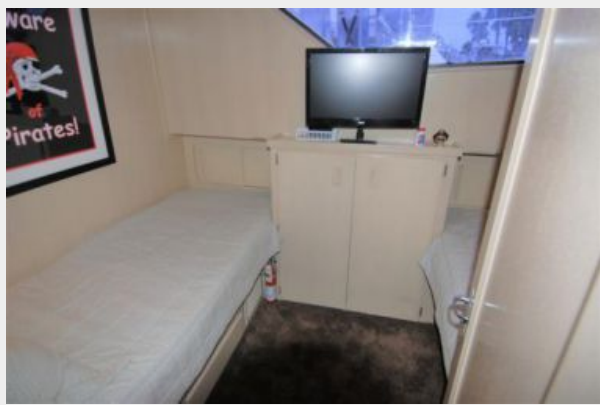
DSC_6110 (2)



DSC_6111 (2)



DSC_6112 (2)



DSC_6113 (2)



DSC_6114 (2)



DSC_6115 (2)



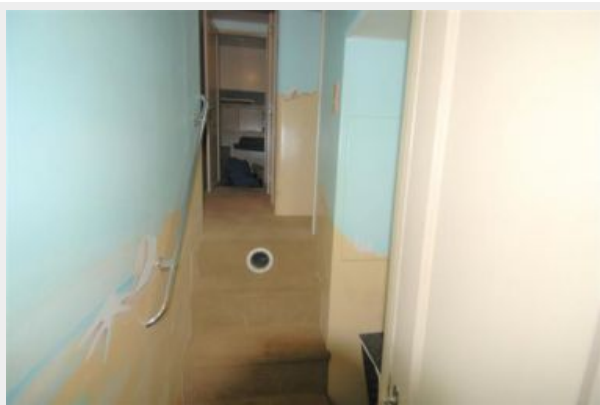
DSC_6116 (2)



DSC_6117



DSC_6118 (2)



DSC_6119 (2)



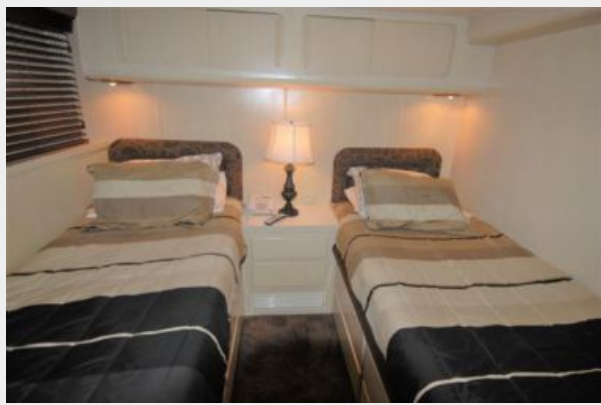
DSC_6120 (2)



DSC_6121 (2)



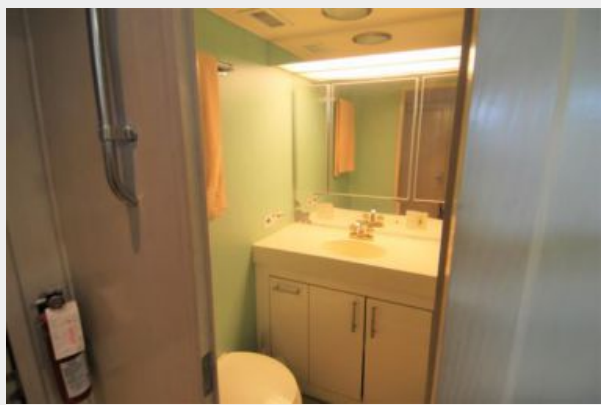
DSC_6122 (2)



DSC_6131



DSC_6132



DSC_6134



DSC_6135 (2)



DSC_6136 (2)



DSC_6137 (2)



DSC_6138 (2)



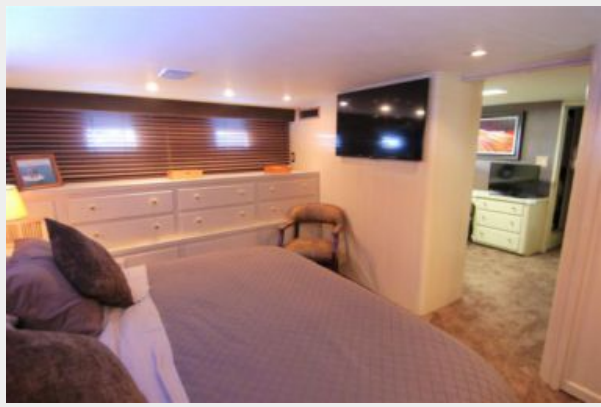
DSC_6139 (2)



DSC_6140 (2)



DSC_6142



DSC_6143 (2)



DSC_6144 (2)



DSC_6161



DSC_6147 (2)



DSC_6162 (2)



DSC_6148



DSC_6149



DSC_6150



DSC_6152



DSC_6153



DSC_6154



DSC_6155



DSC_6156



DSC_6168



DSC_6163



DSC_6169



DSC_6166



DSC_6164



DSC_6170



DSC_6171



DSC_6173



DSC_6174



DSC_6124 (2)



DSC_6125 (2)



DSC_6126 (2)



DSC_6127 (2)



DSC_6128 (2)



DSC_6129 (2)



DSC_6130 (2)



DSC_6175



DSC_6176



DSC_6178



DSC_6179



CONTACTS

Andrey Shestakov, leading yacht broker of the sales department of Shestakov Yacht Sales Inc. Shestakov Yacht Sales Inc., the official representative of the Miami/Fort Lauderdale FL headquarters.

Contact details

Email: andrey@shestakovyachtsales.com

Web: shestakovyachtsales.com/en/

Telephones

USA: +1(954)274-4435

Office hours

Monday – Saturday: **9:00 - 21:00** EDT

Sunday: **closed**

Address



Harbour Towne Marina, 850 NE 3rd St,
STE 213, Dania, FL 33004