

## BRAVEHEART



**Год постройки:** 1999

**Модель:** Cutter

**Цена:** **ЦЕНА ЯХТЫ ПО ЗАПРОСУ**

**Длина общая:** 47' (14.33m)

**Ширина:** 13.16

**Макс. осадка:** 5' 2" (1.57m)

Купить **Braveheart** — н/д а также выбрать подходящую вам яхту из нашего каталога яхт вам поможет опытный яхтенный брокер Андрей Шестаков. На сегодняшний день компания **Shestakov Yacht Sales Inc.** имеет большое количество яхт в собственном списке продаж, а также тесно сотрудничает со всеми крупными яхтенными производителями по всему миру.

Для того чтобы купить яхту **Braveheart** — н/д а также проконсультироваться по любому вопросу связанному с покупкой, продажей, чартером яхт позвоните по телефону **+7(918)465-66-44**.

# ОГЛАВЛЕНИЕ

---

ОГЛАВЛЕНИЕ	2
ХАРАКТЕРИСТИКИ	3
Обзор	3
Основная информация	4
Размеры	4
Скорость, вместимость и масса	4
Размещение	4
Корпус и палуба	4
Информация о двигателе	5
ФОТОГРАФИИ	6
КОНТАКТЫ	19
Контактная информация	19
Телефоны	19
Время работы	19
Адрес	19

---

# ХАРАКТЕРИСТИКИ

---

## Обзор

---

### NO HURRICANE FLORENCE DAMAGE!

The Caliber 47 Long-Range Cruiser combines the storage requirements of long ocean passages with the practical realities of coastal cruising and living aboard. Like many modern cruising boats, the 47 has a relatively shallow but long keel and a sturdy rudder/skeg combination aft.

Hull construction is solid fiberglass with vinylester resin in the first layup, after the outer gelcoat, and GP polyester resin in the remaining laminates. The deck and cabin top are both cored with 3-inch squares of 3/4-inch plywood for lightness and strength. The midship cockpit is ample, with a large steering pedestal in its center. The steering wheel is in front of the pedestal's instrument pod, its spokes are curved aft, bringing the outer rim outside the pedestal and making the engine and instrument controls easily accessible without having to reach around, or over, the wheel.

Below deck, the layout provides luxurious and comfortable accommodations for four people. The forward cabin has a head, a separate shower stall, and two spacious stowage lockers. The main saloon, which is amidships, has a large fold-down table with an L-Shaped settee to port, seating to starboard and a forward-facing nav station at the foot of the companionway to starboard. The master head (with shower) is immediately aft to starboard, just forward of the master stateroom. The long L-Shaped galley, with freezer and refrigerator, is in the portside walk-through to the master stateroom. The engine room, between the galley and owner's head, is large and well laid out. Water and fuel controls and filters are grouped together and have back-up systems in case of clogs or failures. A sea chest handles all water intakes and requires only one through hull below the waterline. I have sailed a 47 on flat water in winds of 8 to 12 knots, with gust up to 18. In the puffs the boat heeled a little before accelerating, but weather helm was not excessive. The boat tracked well on all points of sail and was maneuverable under both sail and power. Most boats are compromises, but the Caliber 47LRC is built to go either to sea or harbor-to-harbor in comfort.

What sets Caliber apart from the fleet of her rivals? Is it her swiftness? Her seaworthiness and durability? Her exceptional stability and comfort? As Caliber owners know, it is the artful combination of these qualities, which enables a Caliber to perform beyond the limits that constrain so many others. The Caliber 47 LRC meets all those expectations of a cruiser. The 47 LRC has features like **Water Tight Collision Bulkhead, Water-Tight Rudder Dam, Flexible Fuel System, Safety Sea Chest, Convertible Cutter Rig, In mast furling, Generator, Watermaker, Solar Cells and much more.**

The current owners are extremely meticulous. Maintaining all the systems and the overall condition was a priority. The next owner will greatly benefit from their attention to detail. This Caliber 47LRC is worth an inspection. The Caliber 47 Long Range Cruiser is the definition of a true-blue water cruiser. Seaworthy and good looking! Of the 25 47 LRCs made, All are still on the water providing extraordinary safety and comfort for the owners. The added fuel and water

capacities allow ease of travel and the large center cockpit layout and spacious interior allow for ease of living while the convertible cutter rig with in-mast furling mainsail allows for ease of sailing and the mast is only 63' making BRAVEHEART intracoastal waterway friendly.

BRAVEHEART has been meticulously maintained by her fastidious owner and has special upgrades and updates that distinguish her from the other Caliber 47s. A complete list is available from the listing broker.

## Основная информация

---

**Тип судна:** Cutter

**Подкатегория:** Cruising/Racing Sailboat

**Модельный год:** 1999

**Год постройки:** 1999

## Размеры

---

**Длина общая:** 47' (14.33mm)

**Ширина:** 13.16

**Макс. осадка:** 5' 2" (1.57mm)

## Скорость, вместимость и масса

---

**Вместимость воды:** 250 Gallons

**Вместимость сточного бака:** 50 Gal  
Gallons

**Объем топливного бака:** 250 Gal Gallons

## Размещение

---

**Всего кают:** 2

**Всего ком. состава:** 2

## Корпус и палуба

---

**Материал корпуса:** Fiberglass

## Информация о двигателе

---

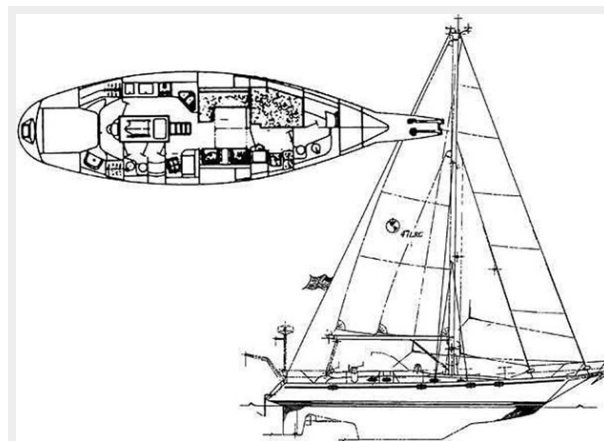
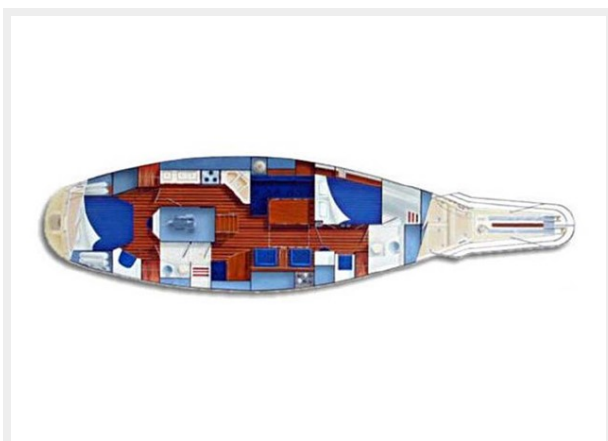
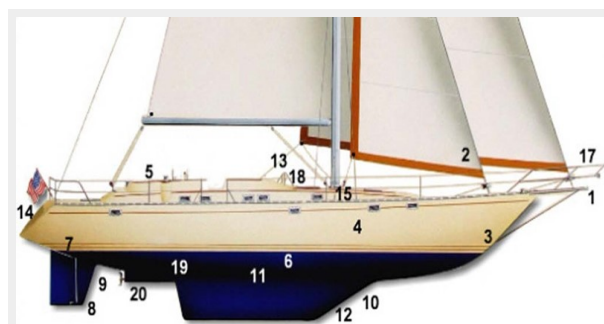
**Двигатели:** 1

**Производитель:** Yanmar

**Тип двигателя:** Inboard

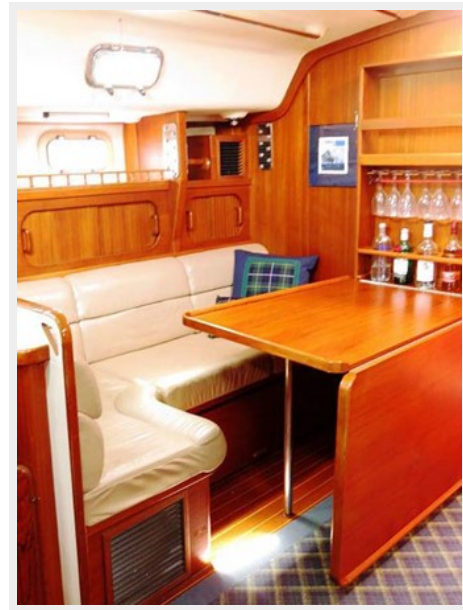
**Тип топлива:** Diesel

# ФОТОГРАФИИ

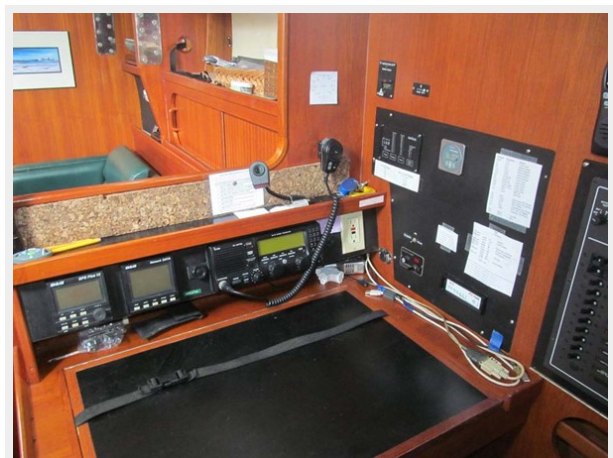


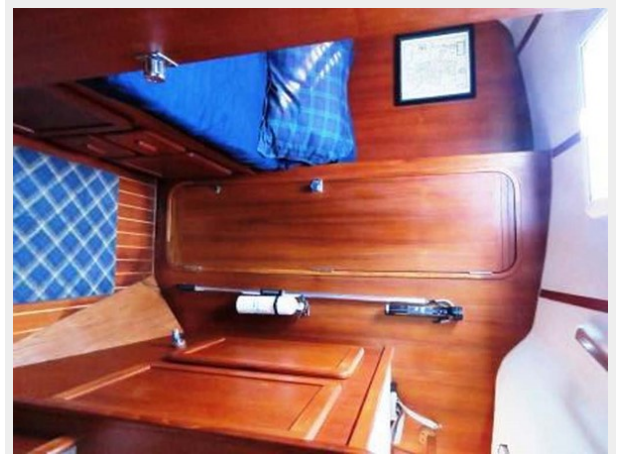










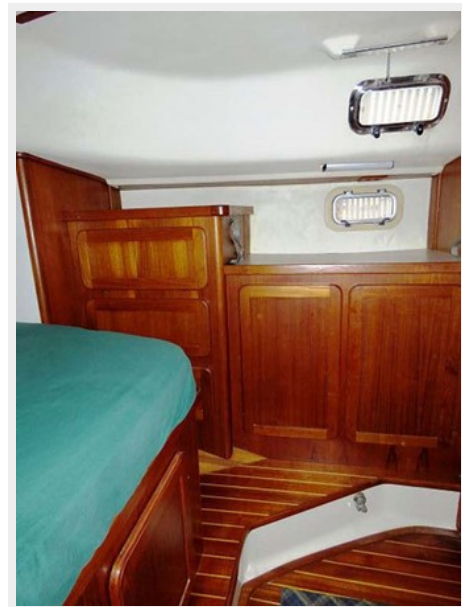






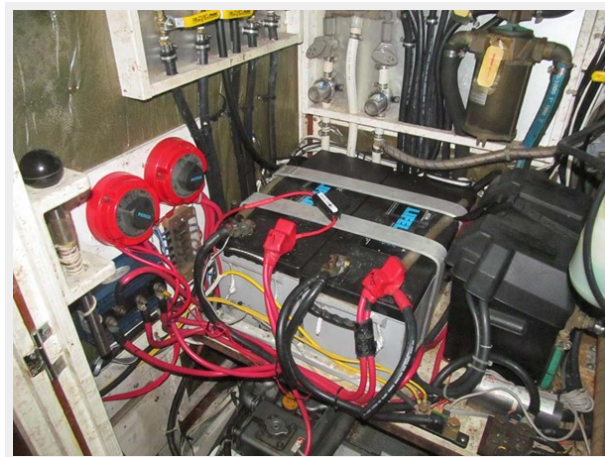






















# КОНТАКТЫ

---

Андрей Шестаков (Andrey Shestakov) – ведущий яхтенный брокер отдела продаж яхт и судов компании Shestakov Yacht Sales Inc. Официальный представитель Shestakov Yacht Sales Inc. для русскоговорящих клиентов в центральном офисе компании в Майами/Форт Лодердейл/Флорида/США.

## Контактная информация

---

Email: [andrey@shestakovyachtsales.com](mailto:andrey@shestakovyachtsales.com)

Web: [shestakovyachtsales.com](http://shestakovyachtsales.com)

## Телефоны

---

Краснодарский край: **+7(918)465-66-44**

США, Майами, Флорида: **+1(954)274-4435**

## Время работы

---

Понедельник – Суббота: **9:00 - 21:00**  
EDT

Воскресенье: **Закрито**

## Адрес

---



Harbour Towne Marina, 850 NE 3rd St,  
STE 213, Dania, FL 33004