

NUMARINE 26XP HULL #22 — NUMARINE



Builder: [NUMARINE](#)

Year Built: 2023

Model: Motor Yacht

Price: PRICE ON APPLICATION

Location: Turkey

LOA: 85' 4" (26mm)

Beam: 21.65

Max Draft: 6' 7" (2mm)

Cruise Speed: 11.5 Knots Kts. (13 MPH)

Max Speed: 14 Knots Kts. (16 MPH)

Our experienced yacht broker, Andrey Shestakov, will help you choose and buy a yacht that best suits your needs **Numarine 26XP Hull #22 — NUMARINE** from our catalogue. Presently, at **Shestakov Yacht Sales Inc.**, we have a wide variety of yachts available on our sale's list. We also work in close contact with all the big yacht manufacturers from all over the world.

If you would like to buy a yacht **Numarine 26XP Hull #22 — NUMARINE** or would like help answering any questions concerning purchasing, selling or chartering a yacht, please call **+1(954)274-4435**

TABLE OF CONTENTS

TABLE OF CONTENTS	2
SPECIFICATIONS	3
Overview	3
Basic Information	3
Dimensions	3
Speed, Capacities and Weight	3
Accommodations	4
Hull and Deck Information	4
Engine Information	4
PHOTOS	5
CONTACTS	11
Contact details	11
Telephones	11
Office hours	11
Address	11

SPECIFICATIONS

Overview

Numarine 26XP Hull #22 is now available with a March 2023 delivery with construction already started. This is an extremely large volume 26m that feels like a much larger yacht due to her large windows and open floor plan. The upper sundeck can be custom configured at the request of the client and can include a davit for carrying a tender & jet skis, jacuzzi, full bar and lounge areas. A large fixed hard top allows for plenty of shade. Standard configuration allows you to carry a tender on the hydraulic swim platform back aft. Her layout sleeps 8 guests in 4 cabins including a full beam master cabin. One of the most impressive features is the 7ft of headroom found throughout the yacht. When looking at this segment of the market and comparing size to price/value/volume the 26XP offers one of the best platforms on the market today.

Basic Information

Category: Motor Yacht

Sub Category: Expedition/Explorer

Model Year: 2023

Year Built: 2023

Country: Turkey

Dimensions

LOA: 85' 4" (26mm)

LWL: 78' 7" (23.95mm)

Beam: 21.65

Max Draft: 6' 7" (2mm)

Speed, Capacities and Weight

Cruise Speed: 11.5 Knots Kts. (13 MPH)

Cruise Speed Range: 3000

Max Speed: 14 Knots Kts. (16 MPH)

Water Capacity: 2000 Gallons

Holding Tank: 264.17 Gal Gallons

Fuel Capacity: 2641.72 Gal Gallons

Accommodations

Total Cabins: 4

Sleeps: 8

Total Heads: 5

Crew Cabin: 5

Crew Berths: 4

Crew Heads: 2

Hull and Deck Information

Hull Material: GRP

Hull Configuration: Full Displacement

Engine Information

Engines: 2

Manufacturer: MAN

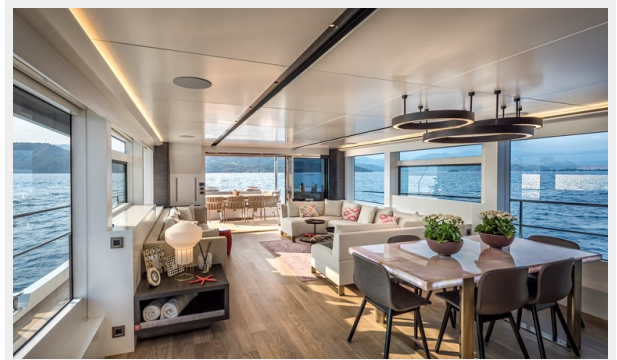
Engine Type: Inboard

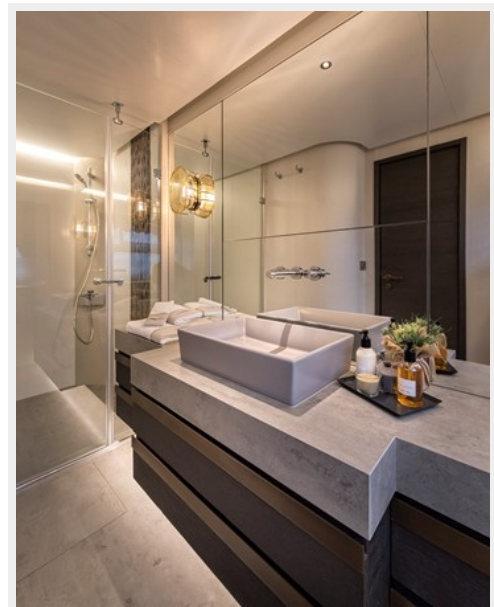
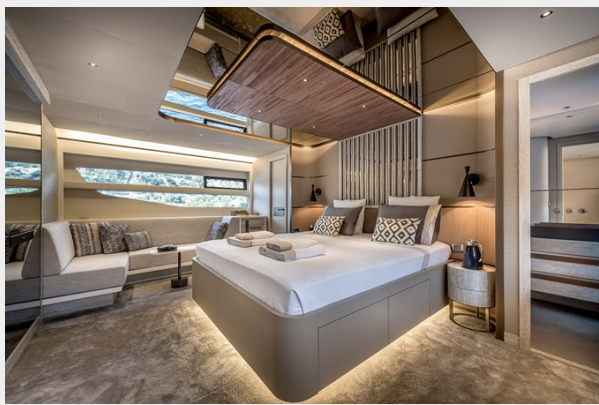
Fuel Type: Diesel

PHOTOS

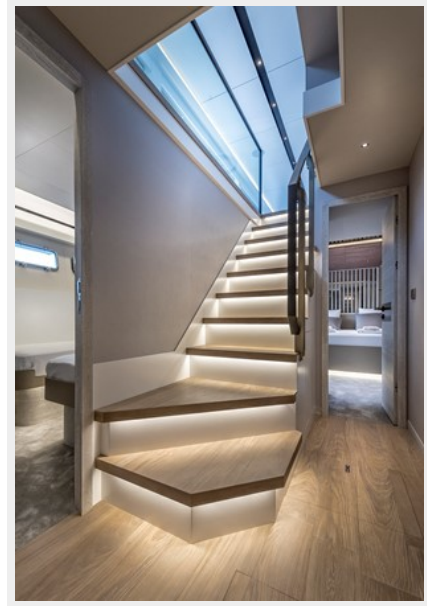












CONTACTS

Andrey Shestakov, leading yacht broker of the sales department of Shestakov Yacht Sales Inc. Shestakov Yacht Sales Inc., the official representative of the Miami/Fort Lauderdale FL headquarters.

Contact details

Email: andrey@shestakovyachtsales.com

Web: shestakovyachtsales.com/en/

Telephones

USA: +1(954)274-4435

Office hours

Monday – Saturday: **9:00 - 21:00** EDT

Sunday: **closed**

Address



Harbour Towne Marina, 850 NE 3rd St,
STE 213, Dania, FL 33004