

## FORMULA 40 CRUISER — FORMULA



**Судостроитель:** FORMULA

**Год постройки:** 2016

**Модель:** Моторная яхта

**Цена:** ЦЕНА ЯХТЫ ПО ЗАПРОСУ

**Местонахождение:** United States

**Длина общая:** 40' 7" (12.37m)

**Ширина:** 12' 8" (3.86m)

**Макс. осадка:** 2' 11" (0.89m)

Купить **Formula 40 Cruiser — FORMULA** а также выбрать подходящую вам яхту из нашего каталога яхт вам поможет опытный яхтенный брокер Андрей Шестаков. На сегодняшний день компания **Shestakov Yacht Sales Inc.** имеет большое количество яхт в собственном списке продаж, а также тесно сотрудничает со всеми крупными яхтенными производителями по всему миру.

Для того чтобы купить яхту **Formula 40 Cruiser — FORMULA** а также проконсультироваться по любому вопросу связанному с покупкой, продажей, чартером яхт позвоните по телефону **+7(918)465-66-44**.

# ОГЛАВЛЕНИЕ

ОГЛАВЛЕНИЕ	2
ХАРАКТЕРИСТИКИ	4
Основная информация	4
Размеры	4
Скорость, вместимость и масса	4
Размещение	4
Корпус и палуба	4
Информация о двигателе	5
ПОДРОБНОЕ ОПИСАНИЕ	6
Detailed Description	6
Исключения	10
Отказ от ответственности	10
ФОТОГРАФИИ	11
1	11
2	11
3	11
4	11
5	11
6	11
7	12
8	12
9	12
10	12
11	12
12	12
13	13
14	13
15	13

---

16	13
17	13
18	13
19	14
20	14
21	14
<b>КОНТАКТЫ</b>	<b>15</b>
Контактная информация	15
Телефоны	15
Время работы	15
Адрес	15

# ХАРАКТЕРИСТИКИ

## Основная информация

Тип судна: Моторная яхта

Подкатегория: Крейсер

Модельный год: 2016

Год постройки: 2016

Страна: United States

## Размеры

Длина общая: 40' 7" (12.37m)

Ширина: 12' 8" (3.86m)

Макс. осадка: 2' 11" (0.89m)

## Скорость, вместимость и масса

Чистый вес: 20950 Pounds

Вместимость воды: 57 Gallons

Вместимость сточного бака: 57 Gallons

Объем топливного бака: 250 Gallons

## Размещение

Всего кают: 2

Всего коек: 4

Всего ком. состава: 1

## Корпус и палуба

Материал корпуса: Fiberglass

## Информация о двигателе

---

**Двигатели:** 2

**Производитель:** Volvo

**Модель:** IPS 500

**Тип двигателя:** Inboard

**Тип топлива:** Diesel

# ПОДРОБНОЕ ОПИСАНИЕ

## Detailed Description

This boat could be entered into any boat show as that is how the owner maintains her. She is a single owner boat with less low hours and has been maintained with an open checkbook since the day she was delivered. If you prefer to buy a boat that is like new but do not want to pay the new boat price this is the boat for you. Here are a few highlights:

- Low Hours (210)
- 2 Years Transferable Factory Warranty
- Raymarine Electronics
- Show Ready Condition

## Specifications

- Beam: 12' 8"
- Hull Material: Fiberglass
- Max Draft: 2' 11"
- Fuel Tank: 1 x 250|gallon
- Fresh Water: 1 x 57|gallon
- Holding: 1 x 57|gallon
- Single Berths: 4
- Heads: 1
- Dry Weight: 20,950 lb

## Exterior

- NMMA Yacht Certification
- 10-year Structural Warranty
- Transferable 2-Year Formula Guard® Limited Protection Plan
- Imron® Standard graphic & cockpit accent striping
- Pressure-treated Perma Panel™ structural hull matrix
- Foam-filled hull cavities
- Chemically bonded & thru-bolted deck-to-hull joint
- Heavy-duty PVC gunwale w/stainless steel insert
- Integrated bow platform

- Electric windlass w/chain counter, 200' chain, polished stainless steel anchor & hand-held remote control
- Concealed anchor davit w/fiberglass chain locker
- Stainless steel hardware & 316L stainless steel welded rails
- Ten custom Formula logo-cast cleats
- Stainless steel fuel fills w/integral vents
- Three forward polished Bomar® cabin venting hatches w/integrated OceanAir® rollout SKYscreens & privacy shades
- Six polished stainless steel portlights w/screens
- Nonskid deck center walkway & walk-around
- Two Sunbrella® DriFast® foam deck sunpads w/adjustable backrests & 316L stainless steel rails
- Cockpit hardtop w/polished Bomar venting hatches & polycarbonate Lexan® front connectors
- Tinted, tempered curved-glass windshield w/center walk-thru and polished stainless steel frame
- Windshield wipers
- White air horn
- Extended integrated swim platform w/concealed stainless steel swim ladder & pull-up cleats
- Transom shower w/hot & cold controls
- Molded fiberglass transom trunk w/pneumatic lifts, fender rack & four fenders, line storage & storage for cocktail tables & cushions
- 120V shorepower w/fail-safe galvanic isolator & two 30-amp cords
- Polished stainless steel shorepower, cable TV & telephone hookups
- Chromed city water inlet

## Cockpit

- Continuous molded deck & cockpit liner
- Molded in-dash forward deck access steps w/316L stainless steel handrail
- Burl wood-finish dash panels
- Complete Livorsi® illuminated instrumentation, domed w/chrome bezels
- Drive-position indicator
- Ritchie® compass
- Raymarine™ digital depth sounder
- Electronic shift & throttle control
- Volvo IPS joystick docking system
- QL trim tab switches & indicators
- Garmin® GPS navigational system w/color chartplotter
- Dino™ tilt steering wheel w/wood insets & brushed metallic accents

- Auxiliary 12V outlet
- Illuminated waterproof accessory rocker switches w/E-T-A® circuit breakers
- Clarion waterproof dash-mounted multi-feature stereo remote control
- Six 150W 6 1/2" marine-grade speakers w/1,000W amplification, polished stainless steel grilles, separate tweeters & 200W subwoofer
- iPod™/MP3 port
- Fourteen polished stainless steel drink holders
- Cockpit/swim platform blue/white LED courtesy lights w/hand-held remote control
- Integral 316L stainless steel safety rails
- Weather-resistant cockpit seating featuring PreFixx® coating, Tenera® element-resistant thread, DriFast® foam & StarLite® XL synthetic marine panel construction
- Twin command seating w/dual-position helm & companion seats w/center storage compartment
- Port lounge w/fiberglass-lined storage
- Two custom-designed Sunbrella® cockpit pillows
- Aft U-shaped lounge seating w/fiberglass-lined storage, two dual-height tables & sunpad inserts
- Molded wetbar w/integrated sink, Corian® countertop, trash container, 316L stainless steel safety rail & 120V GFCI outlet
- Demand water system w/55-gallon capacity
- Fire extinguisher
- Disconnect switch for auxiliary 12V power
- Custom patterned cockpit carpet
- Pneumatic-assist transom door
- Side curtains w/easy-mount zipper connectors & extended aft cockpit enclosure in color-coordinated non-fading Sunbrella acrylic fabric w/SeaMark™ vinyl undercoating
- Cockpit cover in color-coordinated non-fading Sunbrella acrylic fabric w/SeaMark vinyl undercoating

## Cabin

- Sliding/locking cabin door
- Woodgrain-finish entry steps
- Woodgrain-finish flooring throughout cabin
- Private forward stateroom w/double high-gloss Deep Cherry finish doors, centerline bed w/Sensus® memory foam mattress & four drawers below
- OceanAir Skysol pleated blind system in galley
- Custom quilted bedspread w/matching pillow shams
- Bed linens & towels
- Forward cabin 19" LCD HDTV/DVD combo player w/dockside access cord
- Individual reading lights



- Two forward stateroom hanging lockers w/automatic lights (port side includes two hardwood dovetailed drawers)
- Curved Ultraleather™ sofa seating w/dual-height, high-gloss Deep Cherry wood dining table, filler cushion & two Ultraleather pedestal dining stools
- Custom décor pillows & draperies
- Cabinetry in high-gloss Deep Cherry finish
- 18,000 BTU reverse cycle air conditioner w/digital climate control
- Phone w/cord
- Illuminated 120V & 12V electrical panels
- 32" LCD HDTV/DVD combo player in main salon w/dockside access cord
- Clarion® AM/FM/CD stereo w/changer control, 10-disc CD changer, four 150W 6 1/2" 2-way marine-grade speakers w/1,000W amplification, 8" subwoofer w/100W amplification & iPod docking station
- Ultraleather aft cabin lounge/double berth w/filler cushions
- Cedar-lined aft cabin hanging locker w/automatic light
- Removable high-gloss, Deep Cherry wood cocktail table
- Built-in WalVac® sweeper system w/easy-access wall plate
- In-floor storage compartments
- Complete galley in high-gloss Deep Cherry finish w/storage and hardwood dovetailed drawers, full Corian countertop, beverage center, polished stainless steel sink, concealed 2-burner electric stove w/safety shut-off switch, stainless steel 120V/12V refrigerator/freezer, polished stainless steel microwave oven Krups® coffee maker & concealed in-counter trash container
- Fire extinguisher
- Demand water system w/one-point water fill for freshwater tank and/or city water
- Water level gauge
- 120V water heater w/heat exchanger
- Molded private head compartment w/molded vanity, lower doors in high-gloss Deep Cherry finish, Corian counter, polished stainless steel sink, Flush and Forget® VacuFlush® head unit w/holding tank & dockside pumpout, separate stall shower w/hinged curved acrylic door, hinged Corian seat & exhaust fan
- Cabin bilge pump w/high water alarm
- Two carbon monoxide detectors

## Engine

- Twin Volvo IPS engine installation
- Motorized hatch lift
- Integrated quick-access engine hatch
- Courtesy lighting
- Fume detector

- Automatic fire extinguisher
- Three marine batteries w/battery retainers
- Disconnect switches for starting batteries
- Battery parallel emergency switch
- 80-amp battery charger
- Passive galvanic corrosion protection
- Low-noise rotary bilge blowers
- Automatic bilge pump
- Bilge high water alarm
- QL trim tabs
- 7.3 KW/120V Kohler® low-CO emissions gas generator w/battery or 7.6 KW/120V Westerbeke™ diesel generator w/sound shield & battery

---

## Исключения

При продаже яхты исключаются личные вещи владельца.

---

## Отказ от ответственности

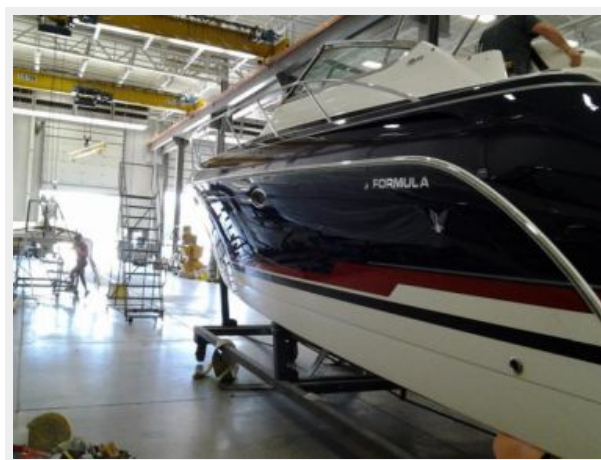
Компания предоставляет описание судна или яхты добросовестно, но не может гарантировать точность этой информации, а также не ручается за техническое состояние. Покупатель должен проинструктировать своих агентов или оценщиков исследовать представленную информацию более подробно, по собственному желанию. Продажа судна или яхты, изменение цены или снятие с продажи будет происходить без предварительного уведомления.

# ФОТОГРАФИИ

1



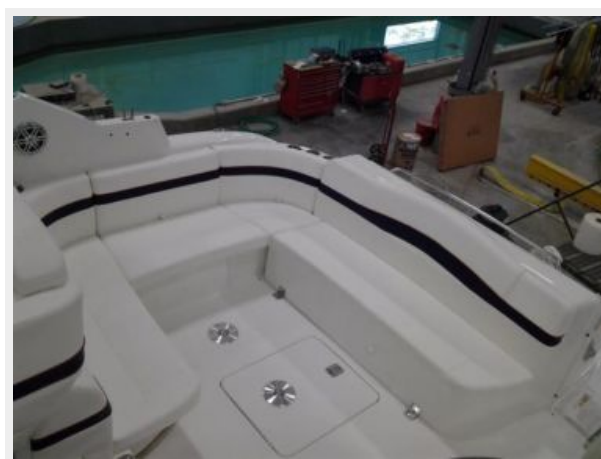
2



3



4



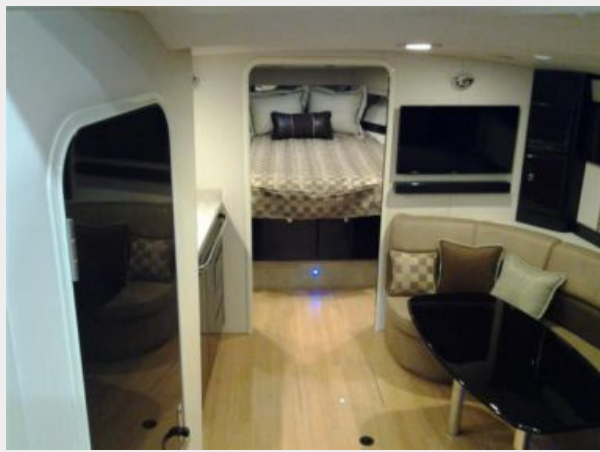
5



6



7



8



9



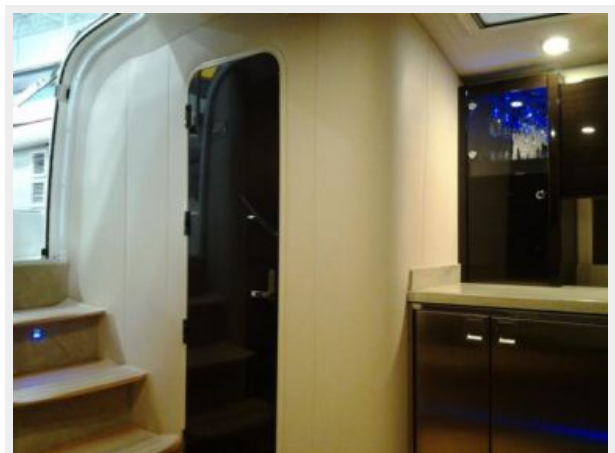
10



11



12





13



14



15



16



17



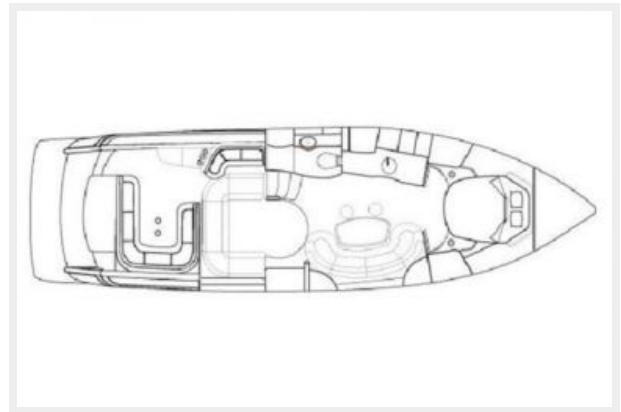
18



19



20



21



# КОНТАКТЫ

---

Андрей Шестаков (Andrey Shestakov) – ведущий яхтенный брокер отдела продаж яхт и судов компании Shestakov Yacht Sales Inc. Официальный представитель Shestakov Yacht Sales Inc. для русскоговорящих клиентов в центральном офисе компании в Майами/Форт Лодердейл/Флорида/США.

## Контактная информация

---

Email: [andrey@shestakovyachtsales.com](mailto:andrey@shestakovyachtsales.com)

Web: [shestakovyachtsales.com](http://shestakovyachtsales.com)

## Телефоны

---

Краснодарский край: **+7(918)465-66-44**

США, Майами, Флорида: **+1(954)274-4435**

## Время работы

---

Понедельник – Суббота: **9:00 - 21:00**  
EDT

Воскресенье: **Закрито**

## Адрес

---



Harbour Towne Marina, 850 NE 3rd St,  
STE 213, Dania, FL 33004