

## ST. TROPEZ — CHEOY LEE



**Builder:** CHEOY LEE

**Year Built:** 2009

**Model:** Cruising Yacht

**Price:** PRICE ON APPLICATION

**Location:** United States

**LOA:** 68' 0" (20.73m)

**Beam:** 18' 0" (5.49m)

**Min Draft:** 5' 3" (1.57m)

**Cruise Speed:** 8.7 Kts. (10 MPH)

**Max Speed:** 12 Kts. (14 MPH)

Our experienced yacht broker, Andrey Shestakov, will help you choose and buy a yacht that best suits your needs **St. Tropez — CHEOY LEE** from our catalogue. Presently, at Shestakov Yacht Sales Inc., we have a wide variety of yachts available on our sale's list. We also work in close contact with all the big yacht manufacturers from all over the world.

If you would like to buy a yacht **St. Tropez — CHEOY LEE** or would like help answering any questions concerning purchasing, selling or chartering a yacht, please call **+1(954)274-4435**

# TABLE OF CONTENTS

---

TABLE OF CONTENTS	2
SPECIFICATIONS	4
Overview	4
Basic Information	4
Dimensions	5
Speed, Capacities and Weight	5
Accommodations	5
Hull and Deck Information	5
Engine Information	5
DETAILED INFORMATION	6
Overview	6
Engines	6
Salon	6
Galley	7
Pilothouse	7
Mastr stateroom and head	7
Aft guest VIP stateroom and head	8
Fwd guest stateroom and head	8
4th stateroom or crew and head	8
Laundry Room	9
Deck Equipment	9
Aft Deck	9
Flybridge	9
Electrical system	10
Engine room and machinery rooms	10
Electronics	11
Transom swim platform	11
Construction	12

---

Additional equipment	12
Owners documentation	12
Disclaimer	12
Exclusions	12
Disclaimer	13
PHOTOS	14
Serenity682	14
3	14
Serenity681	14
Serenity4	14
5	14
6	14
9	15
10	15
IMG_0052	15
Serenity683	15
IMG_0060	15
IMG_0048	15
IMG_0057	16
IMG_0081	16
CONTACTS	17
Contact details	17
Telephones	17
Office hours	17
Address	17

---

# SPECIFICATIONS

---

## Overview

---

A certified pre-owned Cheoy Lee! Factory techs performed a thorough inspection and system check and found St. Tropez in excellent condition mechanically and cosmetically. Complete inspection and reconditioning report is available upon request for a serious buyer.

This trade in from the first owner is built by Cheoy Lee, the shipyard known for building heavy duty commercial vessels expected to operate 24/7 in demanding conditions. Why would you expect less from your yacht builder? This little ship has a range of 2420 NM at 8.7 knots and the top speed is 12.5 knots. This yacht has numerous factory options including an award winning Sylvia Bolton yacht quality interior design. Interior features 4 staterooms, a spacious salon and dining area, a main deck day head, separate functional galley with full size appliances, a separate pilothouse, a beautiful master with a bath tub, 2 luxurious VIPs and either a crew stateroom or the 4th stateroom, all with en-suite heads. Complete navigational electronics in fly bridge helm and inside pilothouse, audio/visual electronics in each stateroom and salon, upgrades include granite countertops throughout, a day head, stainless steel appliances, leather settees, upgraded engine package and power rotating davit just to mention few. Dinghy and outboard are included in the sale.

St. Tropez is the yacht that makes you want to take out the charts, plan the trip and head to open waters.

Powered by twin Caterpillar C7 ACERT 454BHP diesels offering extremely long range, bow thruster for ease of docking with remote electronic engine controls, twin 20kW Kohler generators and much more. Only 617 hours on mains and 830 on generators. Must see to appreciate.

---

## Basic Information

---

**Category:** Cruising Yacht

**Sub Category:** Long Range Cruiser

**Model Year:** 2009

**Year Built:** 2009

**Country:** United States

**Vessel Top:** Hardtop

**Fly Bridge:** Yes

---

## Dimensions

---

**LOA:** 68' 0" (20.73m)**LWL:** 59' 0" (17.98m)**Beam:** 18' 0" (5.49m)**Min Draft:** 5' 3" (1.57m)**MFG Length:** 68' 7" (20.90m)

---

## Speed, Capacities and Weight

---

**Cruise Speed:** 8.7 Kts. (10 MPH)**Cruise Speed Range:** 2350**Max Speed:** 12 Kts. (14 MPH)**Displacement:** 116000 Pounds**Water Capacity:** 600 Gallons**Fuel Capacity:** 2450 Gallons

---

## Accommodations

---

**Total Cabins:** 4**Sleeps:** 8**Total Heads:** 5

---

## Hull and Deck Information

---

**Hull Material:** Fiberglass**Deck Material:** Fiberglass**Hull Configuration:** Full Displacement**Hull Color:** White**Hull Finish:** Fiberglass**Interior Designer:** Sylvia Bolton

---

## Engine Information

---

**Engines:** 2**Manufacturer:** Caterpillar**Model:** C7**Engine Type:** Inboard**Fuel Type:** Diesel

---

# DETAILED INFORMATION

---

## Overview

---

A certified pre-owned Cheoy Lee! Factory techs performed a thorough inspection and system check and found St. Tropez in excellent condition. Complete inspection and reconditioning report is available upon request for a serious buyer.

This trade in from the first owner is built by Cheoy Lee, the shipyard known for building heavy duty commercial vessels expected to operate 24/7 in demanding conditions. Why would you expect less from your yacht builder? This little ship has a range of 2420 NM at 8.7 knots and the top speed is 12.5 knots. This yacht has numerous factory options including Sylvia Bolton yacht quality interior design. Interior features 4 staterooms, a spacious salon and dining area, a main deck day head, separate functional galley with full size appliances, a separate pilothouse, a beautiful master with a bath tub, 2 luxurious VIPs and either a crew stateroom or the 4th stateroom, all with en-suite heads. Complete navigational electronics in fly bridge helm and inside pilothouse, audio/visual electronics in each stateroom and salon, upgrades include granite countertops throughout, a day head, stainless steel appliances, leather settees, upgraded engine package and power rotating davit just to mention few. Dinghy and outboard are included in the sale.

St. Tropez is the yacht that makes you want to take out the charts, plan the trip and head to open waters.

Powered by twin Caterpillar C7 ACERT 454BHP diesels offering extremely long range, bow thruster for ease of docking with remote electronic engine controls, twin 20kW Kohler generators and much more. Only 617 hours on mains and 830 on generators. Must see to appreciate.

## Engines

---

454bhp each engine

ONLY 617 and 614 hours! Cruising Speed: 8-9 knots Max Speed: 12.5 knots

## Salon

---

Beautiful and spacious salon and dining

Staircase down to owner/guest staterooms Smoke detector Entertainment cabinet for television and stereo Halogen ceiling lights with control/dimmer switches Valance lights and floor lighting with control switches Leather settee and two teak arm chairs, cocktail table with slide out seats Wooden dining table Fixed adhesion style, tinted, tempered windows 110vAC duplex outlets (3)

Stainless steel framed tempered glass sliding door to aft deck area

Day head Audio Video Equipment: Sharp 37" HD LCD TV Marantz SR 5002 surround sound receiver Sharp LCD BD-HP20U Blue Ray DVD player Direct TV DSS receiver Niles Volume control 6.5" ceiling speakers (6) Pinnacle 8" sub woofer

---

## Galley

---

Functional galley with full size appliances

GE Stainless steel range/oven unit Sharp Stainless steel microwave oven with ventilation hood Sub-Zero Stainless steel 20 cu. ft. side-by-side refrigerator/freezer with ice dispenser and custom wood door panels GE Stainless steel dishwasher Stainless steel double sink Broan garbage disposal Faucet with removable sprayer handle at galley sink Cabinets, upper and lower Granite countertop Smoke detector Halogen ceiling lights Under cabinet lights 110vAC outlets (4), GFI type Audio volume control Audio 6.5" Ceiling speakers (2) Custom pull out pantry and standard pantry

Franke Insta Hot system

---

## Pilothouse

---

Spacious pilothouse, private and separate from the galley and salon. Easy access to the portugese bridge through pantographic doors.

TELEFLEX/HYNAUTIC hydraulic steering with wooden ship's wheel MATHERS MC-2000-2 electronic engine controls Engine instrumentation and alarms Remote control for anchor windlass Remote control for searchlight Stainless steel steering wheel STIDD helmsman's seat Upholstered leather settee with chart storage drawer under Wooden table Alarm panel (see Electrical Systems) 110vAC duplex outlets (2) Instrument and electronic console Windshield wipers with fresh water wash system Weather tight side doors to side deck and Portugese bridge Red night light and switch Stairs down to guest/crew cabins and engine room Stairs up to flybridge

---

## Master stateroom and head

---

Spacious master

King berth, with storage drawers under Over berth soffit with indirect lighting on dimmer control Stainless steel framed opening ports with screens and hold open arms in stateroom and head Two night tables Smoke detector Closet, cedar lined on back surface Chest of drawers or sit

down vanity unit with seat and mirror Upholstered settee Ceiling lights with control/dimmer switch Valance lights and floor lights with control switches Two reading lights Mirror on closet door HEADHUNTER electric head, fresh water flush Custom molded spa bath with shower Faucets and bath accessories Granite countertop with two sinks Mirrored medicine cabinet Exhaust blower 110vAC duplex outlets (3) in stateroom, two GFI type in head Audio Video Equipment: Sharp 32" HD LCD TV Sharp LCD BD-HP20U Blue Ray DVD player Direct TV DSS receiver 6.5" Ceiling speakers (2)

---

## Aft guest VIP stateroom and head

---

Full beam VIP stateroom

Double berth with storage drawers under Smoke detector Wardrobe, cedar lined on back surface mirror on door Ceiling lights with control switch Valance and floor lights with control switch Two reading lights Stainless steel framed opening ports (4) with screens hold open arms in stateroom and head Stall shower Mirrored medicine cabinet Faucets and bath accessories Granite countertop with sink Exhaust blower HEADHUNTER electric head, fresh water flush 110vAC duplex outlets (2) in stateroom, one GFI type in head Audio Video Equipment: Sharp 32" HD LCD TV Sharp LCD BD-HP20U Blue Ray DVD player Direct TV DSS receiver 6.5" Ceiling speakers

---

## Fwd guest stateroom and head

---

Double berth with storage drawers under Halogen ceiling lights with control switch Valance and floor lights with control switch Two reading lights Stainless steel framed opening ports with screens and hold open arm in stateroom and head Smoke detector Wardrobe cedar lined on back surface with mirror on door Stainless steel framed tinted tempered glass ventilation/escape hatch HEADHUNTER electric head, fresh water flush Stall shower Faucets and bath accessories Granite countertop with sink Mirrored medicine cabinet Exhaust blower 110vAC duplex outlets (1) in stateroom, one GFI type in head Audio Video Equipment: Sharp 32" HD LCD TV Sharp LCD BD-HP20U Blue Ray DVD player Direct TV DSS receiver 6.5" Ceiling speakers

---

## 4th stateroom or crew and head

---

Upper and lower berths Smoke detector Wardrobe cedar lined on back surface and mirror on door Halogen ceiling lights with control switch Valance and floor lights with control switch Two reading lights Stainless steel framed opening ports with screens and hold open arm in stateroom and head HEADHUNTER electric head, fresh water flush Stall shower Granite countertop with sink Mirrored medicine cabinet Faucets and bath accessories Exhaust blower 110vAC duplex outlets (1) in stateroom, one GFI type in head Audio Video Equipment: Sharp 15" LCD TV Pioneer AM/FM/CD/DVD (car unit) Direct TV DSS receiver



## Laundry Room

---

Stack washer and dryer 24" Locker with shelves Ceiling lights with control switch 110vAC outlet (1), GFI type

## Deck Equipment

---

All hardware chrome on brass, 316 stainless steel or anodized/painted aluminum Twin Vertical anchor windlass, MAXWELL VWC 4000 (24vDC, 4000 lb. rated pull) with 7/16" chain cathead and rope capstan, deck pipe and chain stopper 175 amp-hour battery, 24vDC, stored in forward stateroom for windlass service 150 lb. galvanized steel high holding power type anchors stowed in hawse pipes in bow Bow rollers 30 fathoms 7/16" high test galvanized chain on each side Divided chain locker with optional second rode and flush access hatch on deck Fresh and salt water anchor wash down with spigot Fiberglass bulwarks with teak caprail Twin trumpet air horn Stainless steel bollards (6) Stainless steel fairleads Stainless steel bow rails 1.25" Stainless steel burgee flag staff on bow rail Navigation lights Walkway lighting on side deck overhangs Flag staff Boarding gates in side deck bulwark, port (1) and starboard (1) Step plate located at deck entrances Scuppers draining to boot top

Fender storage racks

## Aft Deck

---

Stainless steel and teak ladder to flybridge Painted non-skid deck Fiberglass settees with upholstered cushions Wooden table with pearl inlay Painted fiberglass storage cabinet with stainless steel sink, cold water faucet and fresh water wash down hose bib inside Painted fiberglass storage cabinet with space for optional refrigerator Door and stairs to swim platform Overhead lights with control switch 3 step Marquipt ladder behind aft deck/flybridge ladder Audio Volume control 6.5" Waterproof Ceiling speakers (2) Ready for full Eisenglass Enclosure - tracks in place - my need the enclosure panels

## Flybridge

---

MATHERS MC-2000-2 electronic engine controls TELEFLEX/HYNAUTIC hydraulic steering Engine instrumentation and alarms Remote control for anchor windlass Remote control for searchlight Fiberglass instrument and electronic console Stainless steel steering wheel NAUTICAL STRUCTURES 1500 lb. davit with power rotation Stainless steel framed acrylic flybridge windscreen GRP hard top with halogen down lights including two red lights on separate circuit Stainless steel rails. Life lines around aft deck Hatch and ladder to aft deck with stainless steel rails and gate Fiberglass radar arch with flush mounted lighting STIDD helmsman's seat with vinyl cover and fixed height pedestal Fiberglass L-shaped lounge seat with upholstered cushions, storage under and wooden table with pearl inlay Fiberglass bench seat with

upholstered cushions Scuppers draining to boot top Lightning arrester system Painted fiberglass locker for sink with cold water faucet, fresh water wash down hose bib, U-LINE model 29 icemaker/combo refrigerator unit 110vAC outlets (3), GFI type ACR 100 quartz halogen search light, remote dual station control Jennair electric BBQ w/ safety switch in cabinet Eisenglass Full Enclosure Audio Video Equipment: Aquatic AV Aquatic 3 XM SAT ready AM/FM/CD/DVD (car unit) Volume control 6.5" Waterproof Speakers (4) Jennair Electric BBQ w/safety switch in cabinet

---

## Electrical system

---

220/110vAC 60 cycle and 24/12vDC electrical panels, main panels in engine room and zone panels throughout vessel. Automatic lights for electric panel cabinets SIDE-POWER 12", 16hp DC bow thruster with dedicated battery bank ACR 100 searchlight with dual station remote control Halogen overhead light fixtures throughout Valance lights and floor lighting to be 24vDC rope lighting Wardrobe lights, automatic 24vDC reading lights 110vAC receptacles in galley, heads and exterior are protected with GFI safety breakers Two banks of 24vDC 210 amp-hour gel cell batteries for engine starting and ship service Emergency engine start battery parallel system, dual station Two sets of 12vDC 175 amp-hour gel cell batteries for generator starting 24vDC 60 amp battery charger 12vDC 20 amp battery charger 12vDC power supply for electronics in pilothouse GLENDINNING Cablemaster shore power cable retrieval system, for 230vAC 50 amp service, with 75 ft. cable for both sides of the vessel based on dock situation. Shore cable television inlet located in locker on aft deck Electric copper bonding system, connecting all through hulls and major metal components to exterior hull zinc anodes Isolation transformer (15 kVA), for shore power system Dynaplate grounding plate and strap to pilothouse and flybridge ground terminal boards Voltmeters and ammeters for supply circuits Generating set/shore power selector switches, shore power polarity indicator LCD touch screen control/alarm monitoring system with audible and visual signals displayed on Programmable Logic Controller (PLC) located in pilothouse for generator low oil pressure, generator high temperature, high bilge level, and smoke detectors (engine room, staterooms, galley, salon). Security alarm sensors on all doors and hatches. Navigation light control and monitoring.

---

## Engine room and machinery rooms

---

Twin CATERPILLAR C7 ACERT (454 BHP, 2,400 rpm each) diesel engines, fresh water cooled, standard engine maker instrumentation, 24vDC 65 amp alternators and 24vDC starting Local mounted start/stop instrument panels for main engines Hull side exhausts with fiberglass mufflers Two KOHLER generators, 20kW with sound shields. 12vDC starting 230vAC reverse cycle direct expansion air conditioning systems (except engine room) CENTEK combo generator mufflers, air/water separator type, with hull side exhaust NAIAD 254 stabilizer system with 9 sq. ft. fins Engineered engine room ventilating system, with intake blowers taking air in via air/water

separator filters in hull side Fire protection system, consisting of manually and automatically actuated fire extinguisher system with audio and visual alarms. Upon system actuation, blowers are shut down and hull side ventilation inlet dampers are closed Lube oil change system with GROCO pump, manifold and hoses to all engines and gearboxes RACOR fuel filters for the main engines, manifolded two per engine to allow filter change underway RACOR filters for generators, one for each Water heater, 30 gallons, dual element, quick recovery type Cartridge style whole system water filter unit Fresh water hose bib Automatic sump pumps Automatic bilge pumps, for each separate compartment in the vessel HEADHUNTER Mach 5 AC water pump with accumulator tank, for water pressure system Fuel management system, consisting of fuel shut-off valves, fuel transfer pump and meter system Fuel tank gauges, pneumatic pump type Water tank gauges, pneumatic pump type Black and gray water tank gauges, pneumatic pump type Black water tank level indicator and high level alarm Black water holding tank system with Y-valve selector to allow direct discharge overboard or into holding tank. Macerator pump for pump out of holding tank direct over board, or to vented deck fitting for shore side disposal. GROCO bronze raw water strainers, all engines and sea water pump intakes Seacocks on all through hull fittings below the waterline Fiberglass battery boxes and battery tie downs Engineered sound vibration and noise attenuation system for engine room spaces consisting of lead tile sound barriers and Mylar faced synthetic lead-foam insulation covered with white painted aluminum perforated sheeting. Custom sound mounts for main engines, generators, engine room stanchions, head pumps/motors, air conditioning compressors and seawater cooling pumps Drip trays under engines Stainless steel propeller shafts Stainless steel rudder blades Nibral propeller shaft struts Manganese bronze propellers, 5 blade, dynamically balanced DURAMAX cutlass rubber stern and rudder bearings PYI packless shaft and rudder stock seals 110vAC explosion proof fluorescent lights Smoke detectors 110vAC outlets (2), GFI type Watertight access door

Water maker

## Electronics

ICOM IC-M604 VHF (PH & FB) ICOM Command Mic III (PH & FB) Hailer Horn Furuno Nav-Net 1955 CBB/NT Radar/Plotter, 6kW, 64 nm Antenna Radar 4' Furuno control head (PH & FB) Furuno GP 1920C/NT GPS/Plotter C-Map USA East Coast and Bahamas Furuno weather station, wind speed and direction (2) KEP Pilot 12: Screen (PH) (2) KEPM Sunlight 12: Screen (FB) Furuno GP 32 WAAS/GPS (PH) Simrad AP 26 Autopilot (PH) Autopilot 2nd station remote (FB) Furuno RD 30 Depth, speed Control head (PH & FB) KVH M7 Satellite TV Base Line USA KVH M7 Antenna 24" KVH M7 Dummy Dome KVH Tracphone 252 & 33 antenna cable pre run to dummy dome Panasonic PH 824 telephon system (5-speaker phones) Pelco CCTV camera system Camera aft deck & engine room

## Transom swim platform

Teak swim platform Door and stairs to swim platform from aft deck Stainless steel fold down

swim ladder Fresh water hot and cold shower

---

## Construction

---

Solid fiberglass hull and topsides with no wood or coring Decks and house of DIVINYCELL cored resin infused laminates, no wood in structure. Integral fiberglass fuel, fresh water and holding tanks with baffles and cleaning manholes Double Fiberglass rub rail with stainless steel capping Tinted, tempered glass (6mm) windows, utilizing high strength, adhesion style window system. Forward pilothouse windows are not tinted AXELSEAL non-skid exterior decks ALEXSEAL exterior finish (off white)

---

## Additional equipment

---

Navigational electronics (2) Remote plug-in stations for electronic engine controls RITCHIE 5" compass, flush mount with cover, lighted with dimmer Telephone/intercom system Audio/visual systems 12' Nautica deluxe RIB Dinghy with Mercury 40 hp 4 stroke outboard, VHF radio, depth sounder, lifting harness, chocks and backing plates in deck Power rotation for davit GRP hard top with down lights including two red lights on separate circuit Soft goods decor, such as drapes, Roman shades, headboards, bed treatments (Sylvia Bolton Designer) Loose furniture, chairs and stools Dual anchoring systems, including extra anchor, chain, second windlass and divided chain locker Inverter system Wing doors to aft deck Refrigerator for aft deck cabinet MarQuipt ladder with custom cover

---

## Owners documentation

---

Vessel supplied with list of major equipment, serial numbers and manufacturers; contact details. Manufacturer equipment manuals will be supplied as available. Drawings for major systems, safety and docking plans are supplied on CD

---

## Disclaimer

---

The Company offers the details of this vessel in good faith but cannot guarantee or warrant the accuracy of this information nor warrant the condition of the vessel. A buyer should instruct his agents, or his surveyors, to investigate such details as the buyer desires validated. This vessel is offered subject to prior sale, price change, or withdrawal without notice.

---

## Exclusions

---

Owner's personal belongings.

## Disclaimer

---

The Company offers the details of this vessel or yacht in good faith but cannot guarantee or warrant the accuracy of this information nor warrant the condition of the vessel. A buyer should instruct his representatives, agents, or his surveyors, to investigate such details as the buyer desires validated. This vessel or yacht is offered subject to prior sale, price change, or withdrawal without notice.

# PHOTOS

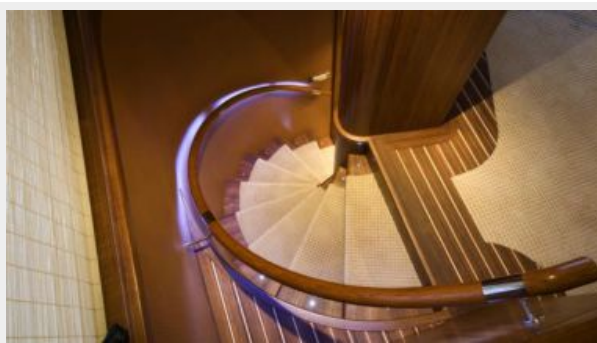
**Serenity682**



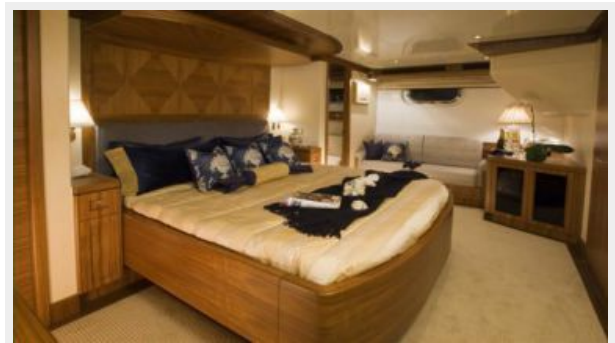
**3**



**Serenity681**



**Serenity4**



**5**



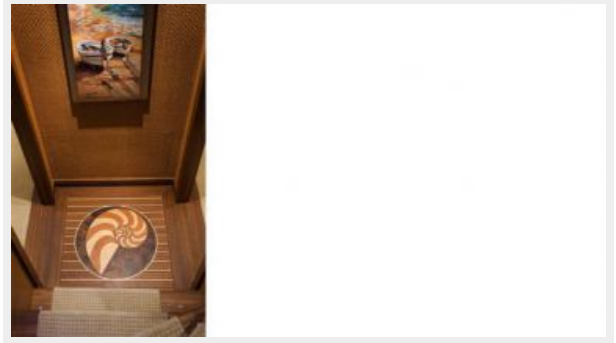
**6**



9



10



Serenity683

IMG\_0052



IMG\_0060

IMG\_0048



IMG\_0057



IMG\_0081





# CONTACTS

---

Andrey Shestakov, leading yacht broker of the sales department of Shestakov Yacht Sales Inc. Shestakov Yacht Sales Inc., the official representative of the Miami/Fort Lauderdale FL headquarters.

## Contact details

---

Email: [andrey@shestakovyachtsales.com](mailto:andrey@shestakovyachtsales.com)

Web: [shestakovyachtsales.com/en/](http://shestakovyachtsales.com/en/)

## Telephones

---

USA: +1(954)274-4435

## Office hours

---

Monday – Saturday: **9:00 - 21:00** EDT

Sunday: **closed**

## Address

---



Harbour Towne Marina, 850 NE 3rd St,  
STE 213, Dania, FL 33004