

RAPHAEL LEAH II — SEA RAY



Builder: [SEA RAY](#)

Year Built: 2019

Model: Motor Yacht

Price: **PRICE ON APPLICATION**

Location: United States

LOA: 46' 0" (14.02m)

Beam: 14' 2" (4.32m)

Min Draft: 3' 11" (1.19m)

Our experienced yacht broker, Andrey Shestakov, will help you choose and buy a yacht that best suits your needs **Raphael Leah II — SEA RAY** from our catalogue. Presently, at Shestakov Yacht Sales Inc., we have a wide variety of yachts available on our sale's list. We also work in close contact with all the big yacht manufacturers from all over the world.

If you would like to buy a yacht **Raphael Leah II — SEA RAY** or would like help answering any questions concerning purchasing, selling or chartering a yacht, please call **+1(954)274-4435**

TABLE OF CONTENTS

TABLE OF CONTENTS	2
SPECIFICATIONS	5
Basic Information	5
Dimensions	5
Speed, Capacities and Weight	5
Accommodations	5
Hull and Deck Information	5
Engine Information	6
DETAILED INFORMATION	7
Detailed Description	7
Exclusions	7
Disclaimer	8
PHOTOS	9
1	9
2	9
3	9
4	9
5	9
6	9
7	10
8	10
10	10
11	10
12	10
13	10
14	11
15	11
16	11

17	11
18	11
19	11
20	12
21	12
22	12
23	12
24	12
25	12
26	13
27	13
28	13
29	13
30	13
31	13
32	14
33	14
34	14
35	14
36	14
37	14
38	15
39	15
40	15
36	15
37	15
38	15
39	16
40	16

CONTACTS	17
-----	-----
Contact details	17
-----	-----
Telephones	17
-----	-----
Office hours	17
-----	-----
Address	17
-----	-----

SPECIFICATIONS

Basic Information

Category: Motor Yacht

Sub Category: Cruiser

Model Year: 2019

Year Built: 2019

Country: United States

Dimensions

LOA: 46' 0" (14.02m)

Beam: 14' 2" (4.32m)

Min Draft: 3' 11" (1.19m)

Speed, Capacities and Weight

Gross Tonnage: 32994 Pounds

Water Capacity: 140 Gallons

Holding Tank: 42 Gallons

Fuel Capacity: 430 Gallons

Accommodations

Total Cabins: 2

Total Berths: 2

Total Heads: 2

Hull and Deck Information

Hull Material: Fiberglass

Hull Finish: Plastic

Engine Information

Engines: 2

Manufacturer: Cummins

Model: QSB 6.7 550T3 NONDTS

Engine Type: Inboard

Fuel Type: Diesel

DETAILED INFORMATION

Detailed Description

SpecsWarranty: Warranty to 5/2025DimensionsLOA: 46 ft 8 inBeam: 14 ft 2 inMinimum Draft: 3 ft 11 inDeadrise: 17 ° at TransomDry Weight: 32994 lbsEnginesEngine 1:Engine Brand: CumminsEngine Model: QSB 6.7 550T3 NONDTSEngine Type: InboardEngine/Fuel Type: DieselLocation: PortEngine Hours: 192Drive Type: V DriveEngine Power: 550 HPEngine 2:Engine Brand: CumminsEngine Model: QSB 6.7 550T3 NONDTSEngine Type: InboardEngine/Fuel Type: DieselLocation: StarboardEngine Hours: 190Drive Type: V DriveEngine Power: 550 HPTanksFresh Water Tanks: 1 Plastic (140 Gallons)Fuel Tanks: 2 Aluminum (430 Gallons)Holding Tanks: 1 Plastic (42 Gallons)AccommodationsNumber of double berths: 2Number of cabins: 2Number of heads: 2ElectronicsGPS - Raymarine Axiom Twin 12' displaysTV set - KVH Sat TV, 3 LCD TV'sCompass - RitchieRadar - Raymarine open arrayVHF - RaymarineCD player - JL AudioCockpit speakersAutopilot - Raymarine P70RSRadio - SiriusXM Satellite radioDVD player - Blue Ray- 3Depthsounder - RaymarineInside EquipmentBattery chargerElectric bilge pumpWashing machine - SplendideAir conditioning - 30,000 BTU above, 20,000 BTU belowHot waterRefrigerator - Isotherm fridge and freezerMicrowave oven - Cuisinart ConvectionBow thrusterStern thrusterHeatingElectric head - Vacuflush- 2Electrical EquipmentShore power inlet - 50 amp on Glendinning CablemasterGenerator - Cummins Onan 12.5KW- 201 hrs.Electrical Circuit: 12VOutside Equipment/ExtrasCockpit table - teakCockpit cushions - with sunbrella coversCockpit shower - hot/coldSwimming ladderElectric windlassCoversCockpit cover - Retractable sun awning

additional options

- Full glass sunroof with shade
- KVH Sat TV
- Salon wine cooler
- Summer kitchen on transom
- Extended range fuel tanks (430 gal. total)
- Oil changer system
- Washer/Dryer combo
- Fuel transfer pump
- Exterior lighting package
- Rod holders
- Foredeck audio system
- Salon door retractable screen

Exclusions

Owner's personal belongings.

Disclaimer

The Company offers the details of this vessel or yacht in good faith but cannot guarantee or warrant the accuracy of this information nor warrant the condition of the vessel. A buyer should instruct his representatives, agents, or his surveyors, to investigate such details as the buyer desires validated. This vessel or yacht is offered subject to prior sale, price change, or withdrawal without notice.

PHOTOS

1



2



3



4



5



6



7



8



10



11



12



13



14



15



16



17



18



19



20



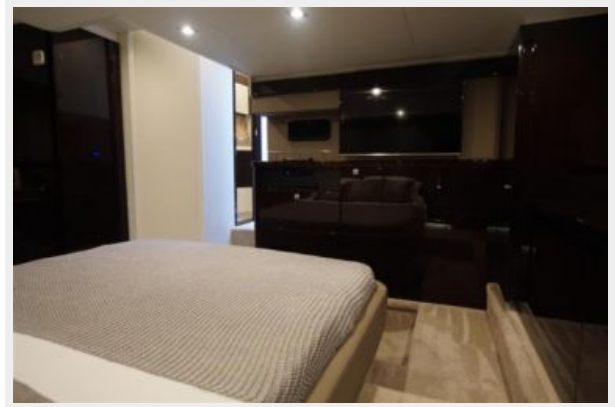
21



22



23



24



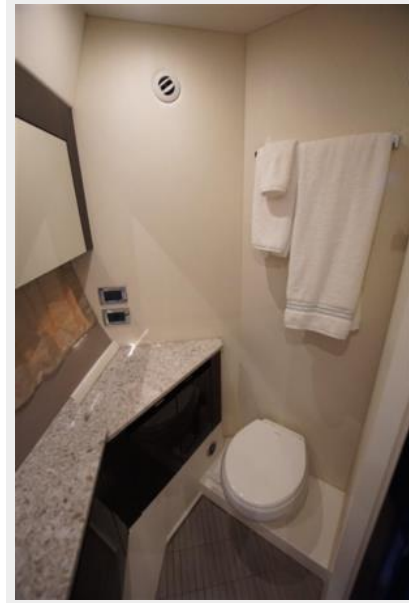
25



26



27



28



29



30



31



32



33



34



35



36



37



38



39



40



36



37



38



39



40



CONTACTS

Andrey Shestakov, leading yacht broker of the sales department of Shestakov Yacht Sales Inc. Shestakov Yacht Sales Inc., the official representative of the Miami/Fort Lauderdale FL headquarters.

Contact details

Email: andrey@shestakovyachtsales.com

Web: shestakovyachtsales.com/en/

Telephones

USA: +1(954)274-4435

Office hours

Monday – Saturday: **9:00 - 21:00** EDT

Sunday: **closed**

Address



Harbour Towne Marina, 850 NE 3rd St,
STE 213, Dania, FL 33004