

DANIELA 2005 AZIMUT 100 JUMBO @ CANCUN — AZIMUT



Судостроитель: [AZIMUT](#)

Год постройки: 2005

Модель: Моторная яхта

Цена: ЦЕНА ЯХТЫ ПО ЗАПРОСУ

Местонахождение: Mexico

Длина общая: 100' 0" (30.48m)

Ширина: 21' 7" (6.58m)

Макс. осадка: 6' 5" (1.96m)

Крейс. скорость: 25 Kts. (29 MPH)

Макс. скорость: 28 Kts. (32 MPH)

Купить **DANIELA 2005 Azimut 100 Jumbo @ Cancun — AZIMUT** а также выбрать подходящую вам яхту из нашего [каталога яхт](#) вам поможет опытный яхтенный брокер Андрей Шестаков. На сегодняшний день компания **Shestakov Yacht Sales Inc.** имеет большое количество яхт в [собственном списке продаж](#), а также тесно сотрудничает со всеми крупными яхтенными производителями по всему миру.

Для того чтобы купить яхту **DANIELA 2005 Azimut 100 Jumbo @ Cancun — AZIMUT** а также проконсультироваться по любому вопросу связанному с покупкой, продажей, чартером яхт позвоните по телефону **+7(918)465-66-44**.

ОГЛАВЛЕНИЕ

ОГЛАВЛЕНИЕ	2
ХАРАКТЕРИСТИКИ	4
Обзор	4
Основная информация	4
Размеры	4
Скорость, вместимость и масса	4
Размещение	4
Корпус и палуба	5
Информация о двигателе	5
ПОДРОБНОЕ ОПИСАНИЕ	6
Salon	6
Galley	6
Dining	7
Powder Room	7
Lobby	7
Master Stateroom	8
Master Head	8
VIP Stateroom	8
VIP Head	9
Guest Staterooms	9
Guest Heads	10
Main Helm Station	10
Flybridge	11
Electronics and Navigation Equipment	11
Bow	12
Stern	12
Main Deck and Cockpit	13
Generator	14

Исключения	14
Отказ от ответственности	14
ФОТОГРАФИИ	15
КОНТАКТЫ	21
Контактная информация	21
Телефоны	21
Время работы	21
Адрес	21

ХАРАКТЕРИСТИКИ

Обзор

2005 Azimut 100 Jumbo @ Cancun

Основная информация

Тип судна: Моторная яхта	Подкатегория: Flybridge
Модельный год: 2005	Год постройки: 2005
Страна: Mexico	Верх: Bimini Top
Открытая палуба мостика: Да	Кубрик: Да
Вертолетная площадка: Да	

Размеры

Длина общая: 100' 0" (30.48m)	Ширина: 21' 7" (6.58m)
Макс. осадка: 6' 5" (1.96m)	

Скорость, вместимость и масса

Крейс. скорость: 25 Kts. (29 MPH)	Макс. скорость: 28 Kts. (32 MPH)
Вместимость воды: 528 Gallons	Вместимость сточного бака: 380 Gallons
Объем топливного бака: 3646 Gallons	

Размещение

Всего кают: 4	Всего ком. состава: 4
Каюты экипажа: 2	Комм. состав экипажа: 2

Корпус и палуба

Материал корпуса: Fiberglass

Информация о двигателе

Двигатели: 2

Производитель: MTU

Модель: 16V 2000 M91

Тип двигателя: Inboard

Тип топлива: Diesel

ПОДРОБНОЕ ОПИСАНИЕ

Salon

- Access through electric tempered glass and stainless steel frame semicircular sliding doors
- Top of bar in marble
- Ice maker, refrigerator, cabinet for bottles and sink in stainless steel
- Furniture with shelves behind bar
- Two C Shaped sofas (one on each side) and two armchairs
- Indirect lighting underneath sofas
- Three coffee tables
- Furniture and drawers
- Upholstery and carpet, curtain
- Ceiling with recess in lacquered wood
- Indirect lighting in the ceiling recess

Galley

- Access through both dining area and watertight door on port side of superstructure
- Door to separate galley and dining area
- Ceramiflex flooring
- Top in marble granite
- Bulkheads in formica
- Sink in stainless steel, electric four burner countertop with hood, oven and microwave, dishwasher, two built-in refrigerators and
- two built-in freezers, washer/dryer
- Folding table in lacquered wood
- Sofa

- Pots holder
- Access to crew quarter

Dining

- Access through lobby
- Table in cherry wood with 8 chairs
- Cabinet to store dishes, glasses and cutlery
- Dishes, glasses and cutlery for twelve people
- Ceiling with recess in lacquered wood
- Curtains, upholstery and carpet

Powder Room

- Located in the port side forward of salon
- Sealand WC system
- Washbasin
- Cabinet and mirror
- Top in marble
- Floor in marble
- Centralized air exhaust system

Lobby

- Located on stbd side forward of salon, allows the access to dining area
- Staircases to wheelhouse and lower deck
- Watertight door to side walk (stbd side)
- Curtains, upholstery, carpet

Master Stateroom

- Double bed
- Two nightstands
- Indirect lighting underneath the bed
- TV cabinet
- Stereo with cd player
- Two loudspeakers
- Walk-in closet with hanging bar, cabinet and shelves
- Opening portholes on both sides
- Sofa on port side
- Vanity with opening horizontal top, mirror and stool on stbd side
- Drawers underneath the bed
- Drawers and cabinet
- Curtains, upholstery and carpet

Master Head

- Sealand WC system
- Two washbasins
- Shower
- Cabinets and mirror
- Top and floor in marble
- Air extractor
- Air conditioning duct

VIP Stateroom

- Double bed

- Two nightstands
- Indirect lighting underneath the bed
- Wardrobe with hanging bar
- Sofa on port side
- Vanity with opening horizontal top, mirror and stool on stbd side
- TV cabinet
- Stereo system with cd player
- Two loudspeakers
- Recessed ceiling in lacquered wood
- Opening portholes on both sides
- Curtain, upholstery and carpet

VIP Head

- Sealand WC system
- Washbasin
- Shower
- Cabinets and mirror
- Top and floor in marble
- Air extractor
- Air conditioning duct
- Curtain on porthole

Guest Staterooms

- Double Bed on Stbd side
- Twin Berths and pullman on Port side
- Indirect lighting underneath berths

- Drawers underneath berths
- Nightstand
- Wardrobe
- Opening portholes on both sides
- Curtain, upholstery and carpet

Guest Heads

- Sealand WC system
- Washbasin
- Shower
- Cabinets and mirror
- Top and floor in marble
- Air Exhaust
- Curtain on porthole

Main Helm Station

- Access through staircase from lobby
- Console in burl wood
- Adjustable helm seat in simi-leather
- Two seats against aft bulkhead
- Area for maps and map drawer
- Cabinets
- Staircase to access to fly bridge
- Pilot station includes: main engine controls with synchronizer, main engines and reversing gear gauges, instruments for navigation, electrical panel, rudder angle indicator, trim tabs, control, rudder pump control, compass wipers, horn, navigation lights, anchor winches, search light controls, fire extinguisher electro-pump control, maneuvering intercom connecting flybridge/main deck and engine room, Fuel electric pump, grey and black water electric pump,

bilge electric-pump controls, high bilge water level alarm, fuel level gauge, fresh water gauge, dimmer for console lights

- Carpet and curtains

Flybridge

- Access through the internal staircase in the main helm station and the external staircase in the aft cockpit
- Pilot console includes: main engine controls main engines and reversing gear gauges instruments for navigation trim tabs control/indicator rudder angle indicator forward anchor winch control electric search lights, horn and navigation lights controls fire extinguisher pump control maneuvering intercom connecting wheelhouse, main deck and engine room.
- Helm seats (port side)
- Two seats (stbd side)
- Bar furniture with sink, barbeque, fridge and icemaker
- Table in fiberglass with leaf
- Three fiberglass sofas (two on sides and one in the middle)
- Fiberglass arch with navigation lights, antennas and search lights
- Sunbathing area w/ cushions
- Lights and two watertight loudspeakers
- Navigation lights
- Non-skid flooring surface
- Windscreen in plexiglass with frame in painted fiberglass
- Stainless steel handrails around sunbathing

Electronics and Navigation Equipment

- Plotter: Raymarine RL80C
- Radar : Raymarine
- Stabilizers : TRAC

- Autopilot: Raymarine Smart Pilot
- Bow Thruster: BCS 30 hp
- Wind Angle Indicator: Raymarine ST2 90
- Rudder Angle Indicator: Raymarine ST2 90
- Trim Tabs: BCS
- VHF : Raymarine 240VHF
- Navtex: ICS
- Satcom : KVH Trackphone FLEET 55
- Sat TV: KVH Trackvision G6
- Computer: HP Pavillion 1020
- Printer: Laserjet P1006 HP
- Portable Handheld VHF: 4 ICON
- Barometer

Bow

- Two 3500w, 24v reversible winches, with control at both helm stations
- Anchor winch controls
- Two 95kg (210 lb) anchor with 13mm chain and 99mm length
- Chain storage with drain and washing chain pump
- Built-in stainless steel bow protection
- Glass and stainless steel hatch to access crew quarters, with stainless steel handrails
- Two side peaks on superstructure
- Three electric wipers for forward windows
- Plug for hose to wash main deck

Stern

- Two electrical wrapping winches
- Electric curved sliding door for salon in tempered glass and stainless steel frame
- Staircase in fiberglass with teak steps from aft cockpit to flybridge
- Extendable round teak table with stainless steel base in aft cockpit
- Eight teak chairs in aft cockpit
- Two watertight loudspeakers in aft cockpit ceiling
- Electro-hydraulic retractable gangway in stainless steel and teak
- Transom with electro-hydraulic opening convertible into wide swim platform
- Teak on swim platform when the transom-door is open
- Hatch to access to garage on the floor of the aft deck
- Garage with: launching and recovering system for tender
- Shore inlet in the bulwark
- TV and telephone shore connections in the bulwark
- Water shore connection on transom
- Shower on transom (stbd side)

Main Deck and Cockpit

- External surface in 12mm thick teak
- Teak cap rail with stainless steel handrail on bulwark
- Hawsehole in the bulwark
- Lights for external deck placed on both sides of superstructure and on aft cockpit ceiling
- Windows in high thickness tempered glass and frame in AISI 316 steel
- Three fairleads with cleats in stainless steel (each side)
- Box water filler on the superstructure
- Fuel filler on each side of the superstructure
- Watertight door to access engine room on port side

- Watertight door to access galley on port side
- Watertight door to access lobby on stbd side

Generator

- Starboard: one Kohler 65kw
- Port: on Kohler 32kw

Исключения

При продаже яхты исключаются личные вещи владельца.

Отказ от ответственности

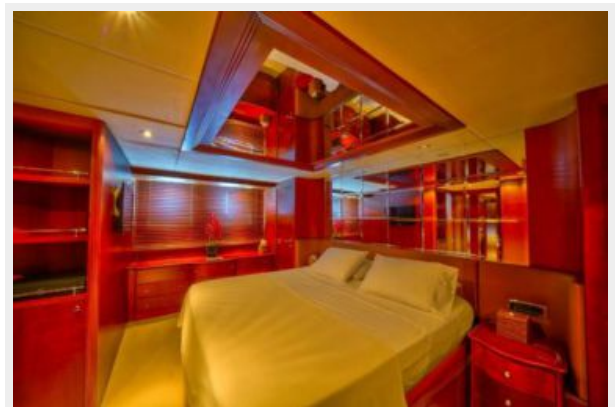
Компания предоставляет описание судна или яхты добросовестно, но не может гарантировать точность этой информации, а также не ручается за техническое состояние. Покупатель должен проинструктировать своих агентов или оценщиков исследовать представленную информацию более подробно, по собственному желанию. Продажа судна или яхты, изменение цены или снятие с продажи будет происходить без предварительного уведомления.

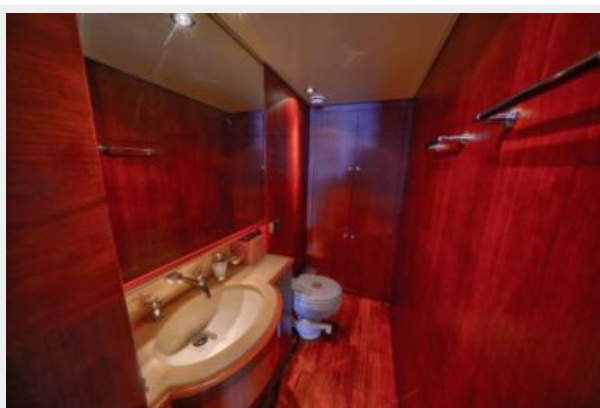
ФОТОГРАФИИ













КОНТАКТЫ

Андрей Шестаков (Andrey Shestakov) – ведущий яхтенный брокер отдела продаж яхт и судов компании Shestakov Yacht Sales Inc. Официальный представитель Shestakov Yacht Sales Inc. для русскоговорящих клиентов в центральном офисе компании в Майами/Форт Лодердейл/Флорида/США.

Контактная информация

Email: andrey@shestakovyachtsales.com

Web: shestakovyachtsales.com

Телефоны

Краснодарский край: **+7(918)465-66-44**

США, Майами, Флорида: **+1(954)274-4435**

Время работы

Понедельник – Суббота: **9:00 - 21:00**
EDT

Воскресенье: **Закрито**

Адрес



Harbour Towne Marina, 850 NE 3rd St,
STE 213, Dania, FL 33004