

SEAFORTH — MORRIS YACHTS



Builder: MORRIS YACHTS

Year Built: 2001

Model: Cruising Sailboat

Price: PRICE ON APPLICATION

Location: United States

LOA: 46' 0" (14.02m)

Beam: 12' 9" (3.89m)

Max Draft: 5' 6" (1.68m)

Our experienced yacht broker, Andrey Shestakov, will help you choose and buy a yacht that best suits your needs **SEAFORTH — MORRIS YACHTS** from our catalogue. Presently, at Shestakov Yacht Sales Inc., we have a wide variety of yachts available on our sale's list. We also work in close contact with all the big yacht manufacturers from all over the world.

If you would like to buy a yacht **SEAFORTH — MORRIS YACHTS** or would like help answering any questions concerning purchasing, selling or chartering a yacht, please call **+1(954)274-4435**

TABLE OF CONTENTS

TABLE OF CONTENTS	2
SPECIFICATIONS	4
Overview	4
Basic Information	4
Dimensions	4
Speed, Capacities and Weight	4
Accommodations	5
Hull and Deck Information	5
Engine Information	5
DETAILED INFORMATION	6
Overview	6
Exclusions	11
Disclaimer	11
PHOTOS	13
3	13
2	13
4	13
5	13
6	13
7	13
9	14
8	14
10	14
11	14
12	14
13	14
14	15
15	15

16	15
17	15
18	15
19	15
21	16
20	16
22	16
23	16
24	17
25	17
26	17
27	17
28	18
29	18
30	18
CONTACTS	19
Contact details	19
Telephones	19
Office hours	19
Address	19

SPECIFICATIONS

Overview

The Morris Ocean Series 46 has the reputation of being an extremely comfortable and capable cruising sailboat that combines great performance with all the amenities required for a weekend cruise, blue water sailing or a global voyage. SEAFORTH is a beautiful example of the Ocean Series 46 with two double berth cabins, a large aft head with separate shower and wet locker, a spacious galley and well laid out cockpit. Until she was sailed south by her current owners, SEAFORTH has been only used seasonally in the Northeast and was always stored inside a heated building and maintained to the highest standards by Morris Yachts. Featured in Ferenc Mate's book *The World's Best Sailboats*, she has a beautiful Herreshoff style interior with rich, gloss varnished mahogany trim and white panels, which keep the interior bright on all days. Her current owners spent lavishly on her, making many improvements and increasing her seaworthiness and live-aboard comfort.

Basic Information

Category: Cruising Sailboat

Model Year: 2001

Year Built: 2001

Country: United States

Dimensions

LOA: 46' 0" (14.02m)

Beam: 12' 9" (3.89m)

Max Draft: 5' 6" (1.68m)

MFG Length: 46' 0" (14.02m)

Speed, Capacities and Weight

Water Capacity: 160 Gallons

Holding Tank: 25 Gallons

Fuel Capacity: 77 Gallons

Accommodations

Total Cabins: 2

Total Berths: 4

Total Heads: 1

Hull and Deck Information

Hull Material: Composite

Engine Information

Engines: 1

Manufacturer: Yanmar

Engine Type: Inboard

Fuel Type: Diesel

DETAILED INFORMATION

Overview

Engine

- Yanmar 56hp fresh water cooled engine (2291 hrs at the time of this posting).
- Yanmar engine panel in cockpit includes tachometer, oil pressure gauge, water temperature gauge, key start, and electric stop button.
- Engine is flexible mounted with flexible drive system.
- Waterpump has Speedseal cover for easy access to the impeller.
- Aquamet SS shaft, stern tube, Tides Marine shaft seal, and Prop Protector shaft mounted line cutter.
- Engine compartment combustion air ducted to a blower and vented through the starboard winch pocket.
- Flex-O-Fold three blade folding prop.
- Sound dampening materials through engine box and bilge.
- Edson dual lever engine control on sides of pedestal.
- 77-gallon aluminum fuel tank, all fuel piping with flexible connections where appropriate.
- Fuel tank has baffles, clean out port, and vent.
- Tank tender system for fuel, holding, and water tanks.
- Optional dual Racor fuel filter system with bypass valve.
- Easy all around access to engine service points, dip stick, oil fill, oil filter and water pump.
- Engine cover filled with lead lined, sound deadening insulation.
- Five separate removable access doors with gaskets and flush easy open non-rattling latches. The entire aft half of the cover is designed for easy removal for convenient service and maintenance

Main Salon

- U-shaped ultra leather bolstered dinette to port.
- Optional custom table with sliding top, folding leaves, a drawer, and built-in liquor storage.
- Leather bolstered settee to starboard (pulls out to create a berth with lee cloth).
- Storage lockers outboard, lockers and book shelves above.
- Wood molding at deck/trunk cabin side fashioned to serve as drip ledge and handgrip.
- SS framed ports and optional SS framed overhead hatches.
- Vented locker doors.
- Overhead handholds by galley and dinette on centerline.
- Mahogany post at fwd end of galley
- A/C for comfort (new 2019)
- Zarcor Port light Shades Throughout (2018)
- LED bulbs Throughout (2018)
- Lee clothes in aft cabin and starboard main cabin.

Galley

- Secure u-shaped galley.
- Force-10 three burner propane stove with oven and broiler and SS crash bar.
- Trident propane system monitor and alarm (2018)
- Frigoboat DC refrigeration system (2019)
- Large top loading fridge with separate freezer.
- Icebox has 4" of insulation.
- Corian countertops.
- Polished double stainless steel sink.
- Galley fresh and salt water foot pumps with folding faucets.
- Seagull filtered water faucet.
- Ice box drain plumbed to aft shower sump.
- Hot & cold pressure water with spray rinse.
- Fresh water pump/expansion tank (2019)
- Optional drawer under companionway.
- Optional dust tray under the cabin sole at the companionway.
- Drawer on starboard side of galley peninsula with a tray for silverware storage.
- Sink drop front door with tray for soap and sponge storage.
- Waste basket on locker door under sink. Door has lift-off hinges for easy removal.
- Large storage lockers outboard and above counter top with access through sliding doors.
- Snack bin locker is built into the aft end of galley above the engine cover box.
- Pot locker under stove.
- Microwave
- Task lighting over galley counter

Forward Cabin and Head

- Centerline berth.
- Two opening S/S framed ports and optional S/S framed overhead hatch.
- The berth has four drawers and two foot lockers below.
- Hanging locker with cork lining and shelves.
- Mahogany hull sheathing fastened to "Rib-Kore" frames with closed cell foam insulation.
- Full-length open shelves above each berth with fiddles.
- Lift top storage lockers outboard port and starboard of bunk.
- Fan
- New custom mattress with custom sheets and mattress pads
- Corian countertop.
- SS 16" x 10" oval sink.
- Pressure hot & cold water with mixer valve.
- Angled mirror with mahogany frame and medicine cabinet.
- Stainless steel towel bar.
- Hand soap dispenser (2019)
- 110v outlet

Aft Cabin

- Large double quarter berth with lee cloths.
- Custom mattress with custom sheets and mattress pads (2018)
- Hanging locker with cork liner.
- Overhead chart storage cabinet.
- Small storage cabinet.
- Mahogany framed mirror behind door.
- Dresser with counter top locker, two drawers and foot locker.
- Opening SS framed port to cockpit and one to side deck.
- Cabin top SS framed hatch.
- 6' shelf outboard with fiddle.
- Carbon monoxide detector (2018)
- Reading lights.
- Fan.

Aft Head

- Raritan Elegance Vortex Vac Electric Head (2018) w/ Black water tank sensor
- Black water discharge Pump (2019)
- Seacock (aft head vanity-2018)
- Corian countertops.
- SS highly polished oval sink.
- Hot & cold pressure water faucet.
- Manual foot pump and folding faucet for cold water.
- Separate shower stall with acrylic hi-fold door and seat and oiled teak trim.
- Adjustable wall mount shower head with thermostatic temperature control.
- Wet hanging lockers.
- Optional extra hand holds.
- Cabin top SS framed overhead hatch.
- Opening SS framed port light.
- Mirror with rod light above.
- SS Towel bar.

Electronics and Entertainment

- ICOM Command Mic mounted in cockpit.
- ICOM M502 VHF in nav station.
- Depthsounder dedicated circuit breaker.
- B&G Depth/Wind/Wind/Speed instruments (above companionway in seahood).
- B&G Repeater (nav. station).
- Raymarine Axiom 9 and 12 chart plotters with external sd/usb and Raynet network switch (2019)
- New Ship module multiplexer 3E N2K (2019)
- ICOM MC 710 SSB.

- Robertson AP20 autopilot with two control heads (helm and nav station).
- Sony AM/FM/CD stereo with two interior speakers
- 4G booster (2018)
- New WiFi booster (2018)
- New WiFi router (2018)
- New AIS Vesper Marine Vision 2 (2018) with external antenna and vhf splitter

Electrical

- Side Power Bow Thruster
- 30 amp 120 volt inlet and shore power cord.
- 12 volt panel with circuit breakers, indicating lights, digital volt and ammeter.
- 120 volt panel with voltmeter.
- AGM battery dedicated for engine starting. (2018)
- Multi-stage voltage regulator. Balmar 614 (2019)
- 140 amp alternator
- Battery charger (back-up)
- Emergency switching system to parallel both battery banks.
- Dynaplate connected to bonding system.
- Electrical bonding to all tanks, pulpits, chainplates, and pedestal.
- Ground strap bonded to hull to create ground plane for SSB.
- Optional extra interior lighting.
- Courtesy lights at companionway
- Upgraded Spreader lights.
- Steaming/foredeck light.
- Tri-color masthead light.
- (1) Carbon Monoxide detector (aft cabin - 2018).
- 12-volt cigarette style outlets in cockpit winch pocket and foredeck locker
- Victron battery monitor (2019)
- Victron dc to dc charger for start battery (2019)
- Victron lithium battery bank 300ah (2019)
- Galvanic Isolator (2018)
- Victron Multiplus Inverter/Charger (2019)
- Victron Color Control GX and Multi control panel(2019)
- Flexible solar panels with mppt solar controllers 680 watts (2018)
- Propane control/detector (2018)
- Marine carbon monoxide detector (2018)

Spars & Rigging

- Aluminum mast (supported by discontinuous rod rigging) and boom awlgripped “Snow White”.
- Mast secured to mast step.
- Double air foil spreaders.
- Harken headsail furler.

- Adjustable Harken Big Boat genoa cars..
- Removable hoistable wire/T-900 inner forestay.
- Running backstays.
- Manual backstay adjuster.
- Forespar vang (control run to cockpit).
- Topping lift.
- Traveler.
- Optional Tri-sail track with halyard, cheek block, rope clutch, and cleat on mast.
- Masthead windex
- Optional Boom preventer.
- Optional Carbon Fiber whisker pole with mast storage track.
- Spreader flag halyards.
- Main sheet run to starboard cockpit winch.
- Turnbuckles fitted to custom made chainplates with welded cover plates thru bolted at bulkheads and deck.
- The following are controlled from the cockpit: Genoa furling line, main halyard, main sheet (double ended), preventer, staysail sheets, genoa sheets, two reefs, and vang.

Sails

- Doyle mainsail Cradle with lazy jacks (2018)
- North Norlam 135% furling jib.
- North staysail and storm staysail.
- North tri-sail.
- North gennaker with snuffer.

Cockpit

- Deep ergonomically designed with high coamings for off-shore security and comfort.
- Optional teak coaming cap.
- Three cockpit lockers with gaskets, security hasps.
- Edson wheel steering with brake, engine controls, grab rail.
- 6" Ritchie Globemaster pedestal compass with stainless steel cover.
- Sunbrella dodger and elkhide covered aft and side grab rails. (New 2012)
- Stainless steel wheel with elkhide cover.
- Pedestal with Sunbrella cover.
- Optional custom SS drink holder at pedestal.
- Removable wheel with storage on port rail.
- Winch pockets with ss trim rings.
- Teak double-leaf folding cockpit table with fiddles and cover.
- Cockpit cushions.
- Starboard side sail locker with line storage.
- Portside gear locker.
- Helmsman seat locker.
- Teak folding step at helm.

- Full bimini attached to extended stern rail with folding bows. (New 2012)
- Optional removable connector between dodger and bimini (both isinglass & Sunbrella for shade). (New 2012)

Winches

- Lewmar 58 electric self-tailing primary winches.
- Lewmar 44 electric self-tailing cabin top winch.
- Lewmar 44 self tailing 2-speed winch on starboard cabin top.
- Lewmar 44 self tailing 2-speed secondary winches
- Two Lewmar 40 self tailing 2-speed self-tailing winches on spar

Ground Tackle Deck Equipment

- Custom Stainless stem fitting holds rigged anchor.
- Anchor rode SS protecting deck plate..
- 25kg Rocna anchor with 300' 5/16"HT galvanized chain rode.
- SS deck hawse for secondary anchor rode.
- Secondary anchor: Danforth with 40' 5/16" chain and 300' of 5/8 nylon rode.
- Three Piece Luke 77lb. storm anchor stowed in chocks under cabin sole.
- Anchor Rode snubber (30' of three-strand nylon rode spliced to chain hook)
- Magma grill (new 2018)

Safety Gear, Docking and Tender

- Emergency Tiller
- Tri-lobe Radar reflector.
- Manual bilge pump in cockpit
- Boat hooks.
- Lee clothes in aft cabin and starboard main cabin.
- Dock lines (2018)
- Fenderboards.
- Fenders with polar fleece covers
- Winslow Life Raft (3 yr service in 2018)
- EPIRB Global Fix (2018)
- 8 hp Yamaha with Lock and Harness (2018)
- Foldable FRP F-Rib 11' Inflatable (2018)

Exclusions

Owner's personal belongings.

Disclaimer

The Company offers the details of this vessel or yacht in good faith but cannot guarantee or warrant the accuracy of this information nor warrant the condition of the vessel. A buyer should instruct his representatives, agents, or his surveyors, to investigate such details as the buyer desires validated. This vessel or yacht is offered subject to prior sale, price change, or withdrawal without notice.

PHOTOS

2



3



4



5



6



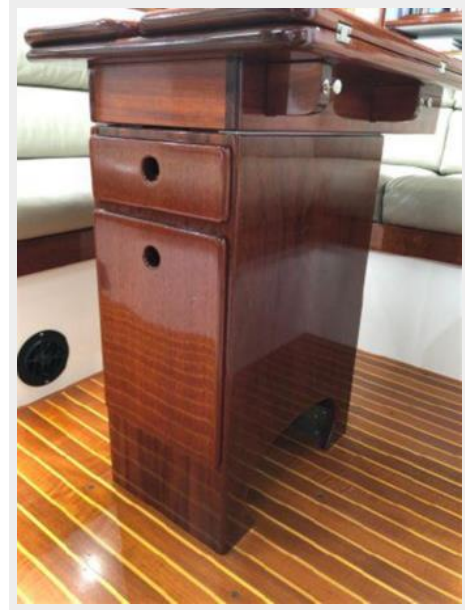
7



8



9



10



11



12



13



14



15



16



17



18



19



20



21



22



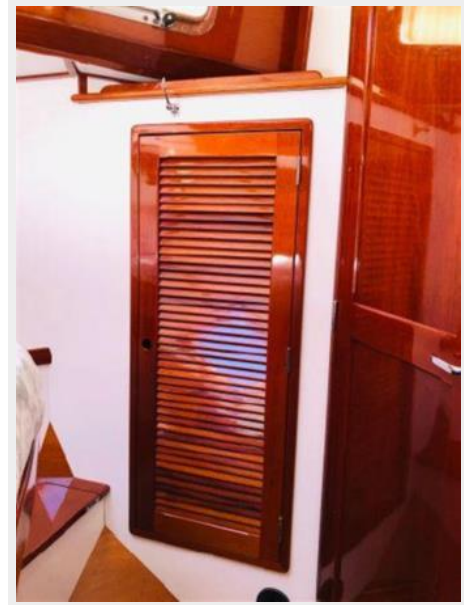
23



24



25



26



27



28



29



30



CONTACTS

Andrey Shestakov, leading yacht broker of the sales department of Shestakov Yacht Sales Inc. Shestakov Yacht Sales Inc., the official representative of the Miami/Fort Lauderdale FL headquarters.

Contact details

Email: andrey@shestakovyachtsales.com

Web: shestakovyachtsales.com/en/

Telephones

USA: +1(954)274-4435

Office hours

Monday – Saturday: **9:00 - 21:00** EDT

Sunday: **closed**

Address



Harbour Towne Marina, 850 NE 3rd St,
STE 213, Dania, FL 33004