

CHRIS CRAFT COMMUTER — CHRIS CRAFT



Builder: CHRIS CRAFT

Year Built: 1930

Model: Runabout

Price: PRICE ON APPLICATION

Location: Canada

LOA: 48' 0" (14.63m)

Beam: 11' 6" (3.51m)

Max Speed: 30 Kts. (35 MPH)

Our experienced yacht broker, Andrey Shestakov, will help you choose and buy a yacht that best suits your needs **Chris Craft Commuter — CHRIS CRAFT** from our catalogue. Presently, at Shestakov Yacht Sales Inc., we have a wide variety of yachts available on our sale's list. We also work in close contact with all the big yacht manufacturers from all over the world.

If you would like to buy a yacht **Chris Craft Commuter — CHRIS CRAFT** or would like help answering any questions concerning purchasing, selling or chartering a yacht, please call **+1(954)274-4435**

TABLE OF CONTENTS

TABLE OF CONTENTS	2
SPECIFICATIONS	3
Overview	3
Basic Information	3
Dimensions	3
Speed, Capacities and Weight	3
Hull and Deck Information	4
Engine Information	4
DETAILED INFORMATION	5
History	5
Overview & Owner Comments	5
Exclusions	6
Disclaimer	6
PHOTOS	7
CONTACTS	13
Contact details	13
Telephones	13
Office hours	13
Address	13

SPECIFICATIONS

Overview

Hull #1 of only five 48 foot Commuter models built by Chris Craft. One of two remaining.

Inspired by the success of the 38 foot Commuter, the 48 foot model was Chris Craft's impressive flagship model of the motor yacht fleet. Built to provide her owner with rapid high speed transportation, Allez was capable of speeds up to 30mph and could taxi 30 passengers.

Equipped with all of the amenities of home, including a galley, salon area, forward and stern staterooms, and ample entertaining area. Allez is the original prototype and exact boat featured in Chris Craft's sales literature. She was displayed at the 1930 New York City and Miami boat shows prior to her first ownership.

Imagine touring Allez in 1930 while Chris Craft's salesman demonstrated the boat's elaborate sliding screen mechanism for the forward cabin, crank windows, salon radio, and other features never before-seen in the luxury boating realm.

Allez is a very significant part of motor yachting history. She has been painstakingly restored and is ready for her next caretaker. This is the first time the boat has been offered for sale on the open market since 1976.

Basic Information

Category: Runabout

Model Year: 1930

Year Built: 1930

Country: Canada

Dimensions

LOA: 48' 0" (14.63m)

Beam: 11' 6" (3.51m)

Speed, Capacities and Weight

Max Speed: 30 Kts. (35 MPH)

Hull and Deck Information

Hull Material: Wood

Engine Information

Engines: 2

Manufacturer: Mercruiser

Model: 454 Cid 8 Cylinder

DETAILED INFORMATION

History

Allez is the original prototype 48' Motoryacht built by Chris Craft. Only 5 were produced in total and she is the sole restored example. "Allez", a French translation of the word "Go", conjugated as an order "To Go" is the original name as applied by Chris Craft in 1930. She was owned by the Smith family of Chris Craft for the first 6 months following her completion and was featured at the 1930 New York City Boat Show, followed by the Ft Lauderdale Boat Show. We have photos of the Chris Craft family aboard Allez in 1930, passing the Biltmore Hotel as well as other notable radio personalities taking the helm.

Allez was subsequently sold in 1930 to a wealthy New York City day trader and shortly thereafter to a woman named Amy Guest. The Guest family owned much of the farmland in Florida that was later developed into Miami as we know it today. Allez later spent much of her life on Lake Champlain in Vermont before entering into a private collection in Montreal in 1976.

The seller has a comprehensive book of documentation that will stay with the boat. It includes photo documentation of the boat throughout its life, restoration documentation, a complete ownership history since day one, copies of the original factory photos + modern recreations in color. He has cared for the boat to a fanatical degree. There is one company who has been responsible for transporting the boat since the 1980's and they have the equipment to move it anywhere in the country. On a low deck transport trailer, only the windshield needs to be removed for clearance. The boat's beam also allows it to be transported with a permit only, no escort.

Overview & Owner Comments

Hull #1 of only five 48 foot Commuter models built by Chris Craft. One of two remaining.

Inspired by the success of the 38 foot Commuter, the 48 foot model was Chris Craft's impressive flagship model of the motor yacht fleet. Built to provide her owner with rapid high speed transportation, Allez was capable of speeds up to 30mph and could taxi 30 passengers.

Equipped with all of the amenities of home, including a galley, salon area, forward and stern staterooms, and ample entertaining area. Allez is the original prototype and exact boat featured in Chris Craft's sales literature. She was displayed at the 1930 New York City and Miami boat shows prior to her first ownership.

Imagine touring Allez in 1930 while Chris Craft's salesman demonstrated the boat's elaborate sliding screen mechanism for the forward cabin, crank windows, salon radio, and other features never before-seen in the luxury boating realm.

Allez is a very significant part of motor yachting history. She has been painstakingly restored and

is ready for her next caretaker. This is the first time the boat has been offered for sale on the open market since 1976.

Exclusions

Owner's personal belongings.

Disclaimer

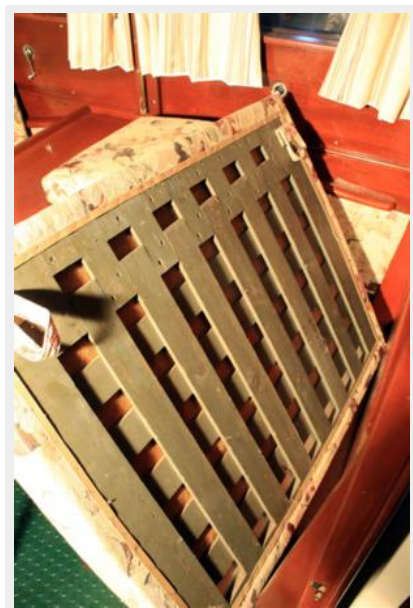
The Company offers the details of this vessel or yacht in good faith but cannot guarantee or warrant the accuracy of this information nor warrant the condition of the vessel. A buyer should instruct his representatives, agents, or his surveyors, to investigate such details as the buyer desires validated. This vessel or yacht is offered subject to prior sale, price change, or withdrawal without notice.

PHOTOS

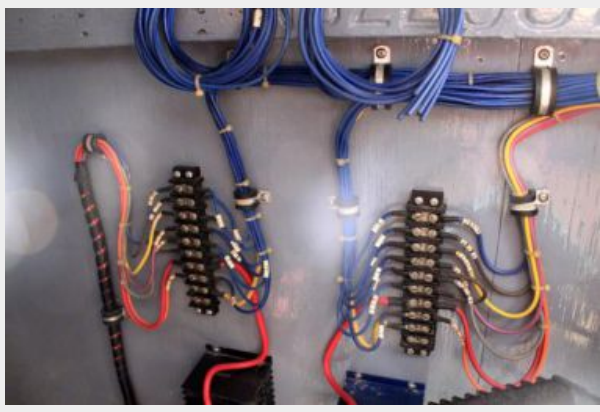












CONTACTS

Andrey Shestakov, leading yacht broker of the sales department of Shestakov Yacht Sales Inc. Shestakov Yacht Sales Inc., the official representative of the Miami/Fort Lauderdale FL headquarters.

Contact details

Email: andrey@shestakovyachtsales.com

Web: shestakovyachtsales.com/en/

Telephones

USA: +1(954)274-4435

Office hours

Monday – Saturday: **9:00 - 21:00** EDT

Sunday: **closed**

Address



Harbour Towne Marina, 850 NE 3rd St,
STE 213, Dania, FL 33004