

VIRTUS — RINKER



Судостроитель: RINKER

Год постройки: 2008

Модель: Крейсер

Цена: **ЦЕНА ЯХТЫ ПО ЗАПРОСУ**

Местонахождение: United States

Длина общая: 41' 6" (12.65m)

Ширина: 13' 0" (3.96m)

Мин. осадка: 1' 10" (0.56m)

Макс. осадка: 3' 2" (0.97m)

Крейс. скорость: 25 Kts. (29 MPH)

Макс. скорость: 35 Kts. (40 MPH)

Купить Virtus — RINKER а также выбрать подходящую вам яхту из нашего каталога яхт вам поможет опытный яхтенный брокер Андрей Шестаков. На сегодняшний день компания Shestakov Yacht Sales Inc. имеет большое количество яхт в собственном списке продаж, а также тесно сотрудничает со всеми крупными яхтенными производителями по всему миру.

Для того чтобы купить яхту Virtus — RINKER а также проконсультироваться по любому вопросу связанному с покупкой, продажей, чартером яхт позвоните по телефону **+7(918)465-66-44**.

ОГЛАВЛЕНИЕ

ОГЛАВЛЕНИЕ	2
ХАРАКТЕРИСТИКИ	5
Обзор	5
Основная информация	5
Размеры	6
Скорость, вместимость и масса	6
Размещение	6
Корпус и палуба	6
Информация о двигателе	6
ПОДРОБНОЕ ОПИСАНИЕ	7
DESCRIPTION	7
Accommodations	7
Galley	8
Engines and Mechanical	8
Water & Sanitation	8
Generator	8
Electrical	9
Electronics & Navigation	9
Fire Extinguishing Systems	9
Anchor	9
Safety Equipment	10
Raised Bridge Deck	10
Hull and Deck	10
Исключения	11
Отказ от ответственности	11
ФОТОГРАФИИ	12
Rinker on water	12
Haulout	12

Helm	12
Helm 1	13
Ritchie Compass	13
VesselView SmartCraft	13
Aft 1	13
Aft 3	13
Aft	13
Aft Seating	14
Aft 2	14
Refrigeration-Ice Maker	14
Sink	14
Salon	14
Companion Way Steps	14
Galley	15
Microwave Combo	15
Refrigeration	15
2	15
Panel	15
Salon 1	16
Guest Cabin	16
Master Cabin 1	16
Master Cabin	16
Vanity in Guest Cabin	16
New Batteries	16
Head 1	17
Head 3	17
Head 2	17
Head	17
КОНТАКТЫ	18

Контактная информация	18
Телефоны	18
Время работы	18
Адрес	18

ХАРАКТЕРИСТИКИ

Обзор

The Rinker 400 Express Cruiser offers a spacious interior:

- Low Engine hours (496)
- 7' Headroom Throughout
- Air Conditioning with reverse cycle heat
- Kohler Generator
- Spacious Salon
- Large Chef-sized Galley
- Built-in Microwave & Coffee Station
- Built-in Refrigeration
- 2 Private cabins, (Forward and an even larger Aft Stateroom)
- Generous Storage
- Raised Bridge Deck
- Large Cockpit with lots of seating
- Full Wet Bar
- Custom Enclosure and much more...

Certainly the best boat value out there in the 40' length with all of the bells and whistles. Comparable boats by the competition are more than \$100 K higher cost with the same drive train and fewer features.

This Express Cruiser is a must have to see! Schedule your appointment TODAY!

Основная информация

Тип судна: Крейсер

Подкатегория: Express

Модельный год: 2008

Год постройки: 2008

Страна: United States

Размеры

Длина общая: 41' 6" (12.65m)

Ширина: 13' 0" (3.96m)

Мин. осадка: 1' 10" (0.56m)

Макс. осадка: 3' 2" (0.97m)

Трапы: 15' 9" (4.80m)

Длина привального бруса: 40' 0" (12.19m)

Скорость, вместимость и масса

Крейс. скорость: 25 Kts. (29 MPH)

Макс. скорость: 35 Kts. (40 MPH)

Водоизмещение: 19680 Pounds

Вместимость воды: 69 Gallons

Вместимость сточного бака: 45 Gallons

Объем топливного бака: 300 Gallons

Размещение

Всего кают: 2

Корпус и палуба

Материал корпуса: Fiberglass

Комплектация корпуса: Modified Deep Vee

Цвет корпуса: Dark Blue

Отделка корпуса: Plastic

Информация о двигателе

Двигатели: 2

Производитель: Mercruiser

Модель: Axius SeaCore 496 Mag H.O.
W/Bravo Three Drives

Тип двигателя: I/O

Тип топлива: Gas

ПОДРОБНОЕ ОПИСАНИЕ

DESCRIPTION

40' 2008 Ringer 400

Is certainly the best value out there in the 40' length with all of the bells and whistles. There is plenty of sleeping room for the whole family in the cabin and more room in the cockpit. Fully equipped and ready for family fun!

This Express Cruiser is a have to see, schedule your appointment TODAY!

Accommodations

Below you will find an open layout flooded with lots of natural light. The master stateroom is located forward, guest stateroom is aft, a fully equipped galley is located port side center with the spacious salon located starboard center. Large cockpit complete with wetbar and room for family and friends.

- 6' 10" Headroom
- Recessed Accent Lighting
- Neutral Tan & Earth Tones
- Kenyon (2) Burner Electric Stove Top
- Built-in: LG Microwave Combo with Coffee Maker
- Dometic Refrigerator/Freezer
- Corian Breakfast Counter/Countertop
- Stainless Sink & Faucet
- Hot & Cold Pressure Water System
- Generous Storage
- Teak Table
- Settee Seating, Curved
- Flat Screen TV
- Cherry Cabinetry & Doors
- Overhead Hatches
- Hardwood Teak & Holly Floors
- Fore and Aft Private Staterooms
- Convertible Fold Down Sofa for Additional Sleeping
- Large Head
- Large Shower Stall
- Vanity
- Stainless Sink & Faucet

Air Conditioner: One 8000 btu Cruisair and one 16,000 Cruisair, both with digital controls.The

cabin has three overhead hatches on the foredeck and six opening ports

Galley

- Stainless Sink
- Domestic CR-1065
- Kenyon 2 burner electric stove
- LG Cafe Combo Microwave
- U-Line Icemaker, model #ULN-WH95TP-03
- Domestic CR-1110

Engines and Mechanical

- Engines are located under the cockpit accessed via a 12 volt lifting hatch.
- Cooling System: Fresh Water Cooled
- Engine Mounts are bolted to longitudinal stringers and are adjustable.
- Engine Controls: Mercury Single lever electronic type
- Engine Room Ventilation: Two 12 volt blowers and induction vents port and starboard.
- Exhaust System: Rubber hose to fiberglass mufflers and out the bottom and stern.
- Steering System: Seastar power assisted hydraulic and a custom tilt wheel.
- Fuel Lines: Approved type A-1 and the system appears to be in compliance with standards.

Water & Sanitation

Water System:

One plastic tank of 69 gallons. The system is pressurized with a 12 volt Shurflo pump or dockside pressure water. Water Heater: Atwood 6 gallon, 120 volt.

Sanitation System:

One plastic tank of 45 gallons. Vacuflush toilet. 12- volt Macerator pump when offshore.

Generator

- Make: Kohler.
- Size: 7.3 KW.
- Model: 7.3 ECD

- Fuel: Gas.
- Serial #: GN39685-GA6.
- Hours: 345.9
- Cooling: Fresh Water.
- Fuel Filter: Spin On Start Battery: Group 31

Electrical

DC System is 12 volts and consists of four Group 31 batteries for generator, engine and house.

The DC System is protected by individual system breakers on the main panel forward in the engine room and panel in the salon.

The system is charged by engine driven alternators or by an Intelli-Power marine charger when connected to shore power. AC System is 120 volts and is powered by two 30 amp, 120-volt shore power cable with connections and breakers in the lazarette and an additional set of connections forward on the starboard side.

The system is equipped with voltmeters and reversed polarity indicators, and is protected by individual breakers on the panel in the salon. GFIC outlets are present in areas that are susceptible of becoming wet.

Electronics & Navigation

- VHF: Standard Horizon Explorer DSC
- GPS: Plotter: Raymarine E 120
- Radar: Raymarine E 120
- Depth Indicator: Faria Digital Gauge
- Compass: 3" Richie
- Stereo: Clarion M455A with remote
- Antennas: VHF, GPS and Radar

Fire Extinguishing Systems

- Three: 1A 10 BC
- Fixed System is a Fireboy FE241 CG-500-FE241

Anchor

- Lexmark 35lb plow
- 20' of chain

- 100' of rode

Safety Equipment

- PFDs: 6 type II adult
- NEW: Horn
- NEW: Spot Light
- Swim Platform
- Swim Ladder
- Navigation Lighting
- Carbon Monoxide Detector
- Orion First Aid Kit

Raised Bridge Deck

- Refrigerator
- Sink & Faucet
- U-Line Icemaker, model #ULN-WH95TP-03
- Under-the-counter Blender
- Radius Seating
- Stereo and Speakers
- Flat Screen TV w/DVD Player
- Hardtop
- Custom Enclosure

Hull and Deck

- Anchor Roller, Recessed Locker & Cradle
- Anchor w/ Chain & Rode
- Anchor & Navigation Lights
- Dual Control Electric Windlass
- Fenders & Lines
- StainlessSteel Bow Rails
- Stainless Steel Cleats
- Wide Side Decks
- Self-Bailing Fiberglass Cockpit Liner w/ Snap Down Carpet
- Fresh & Raw Water Wash Down System
- Hardtop w/ Recessed Lighting and Speakers
- Walk-Thru Windshield with Molded-in Steps
- Windshield Washers & Dual Windshield Wipers, NEW
- Horn, NEW

- Remote Search Light, NEW
- Burlwood Dash & Helm Accents
- Double Wise Adjustable Helm Seat w/ Flip Up Bolster
- Full Custom Enclosure
- LED Cockpit Lights
- Flat Screen TV w/DVD Player
- Dockside Water Hookup
- Hot & Cold Transom Shower
- Extended Swim Platform w/ STainless Steel Swim Ladder
- Walk-Thru Transom w/Gate

Исключения

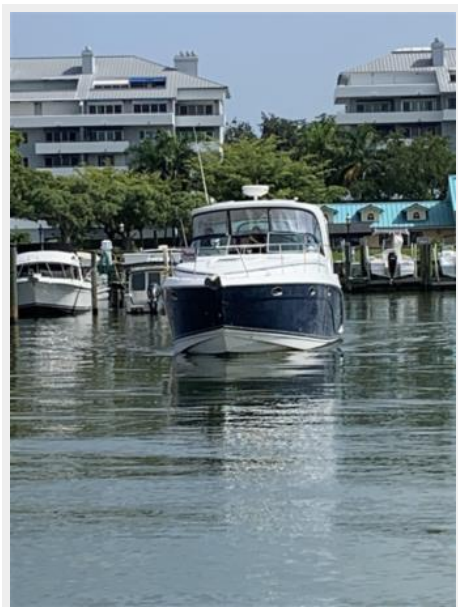
При продаже яхты исключаются личные вещи владельца.

Отказ от ответственности

Компания предоставляет описание судна или яхты добросовестно, но не может гарантировать точность этой информации, а также не ручается за техническое состояние. Покупатель должен проинструктировать своих агентов или оценщиков исследовать представленную информацию более подробно, по собственному желанию. Продажа судна или яхты, изменение цены или снятие с продажи будет происходить без предварительного уведомления.

ФОТОГРАФИИ

Rinker on water



Haulout



Helm



Helm 1



Ritchie Compass



VesselView SmartCraft



Aft 1



Aft 3



Aft



Aft Seating



Aft 2



Refrigeration-Ice Maker



Sink



Salon



Companion Way Steps



Galley



Microwave Combo



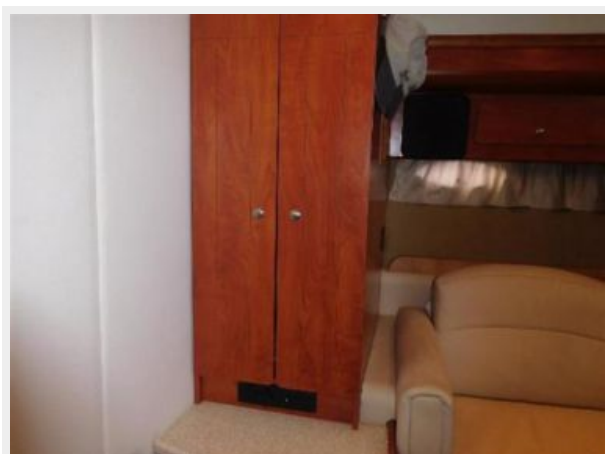
Refrigeration



2



Panel



Salon 1



Guest Cabin



Master Cabin 1



Master Cabin



Vanity in Guest Cabin



New Batteries



Head 1



Head 3



Head 2



Head



КОНТАКТЫ

Андрей Шестаков (Andrey Shestakov) – ведущий яхтенный брокер отдела продаж яхт и судов компании Shestakov Yacht Sales Inc. Официальный представитель Shestakov Yacht Sales Inc. для русскоговорящих клиентов в центральном офисе компании в Майами/Форт Лодердейл/Флорида/США.

Контактная информация

Email: andrey@shestakovyachtsales.com

Web: shestakovyachtsales.com

Телефоны

Краснодарский край: **+7(918)465-66-44**

США, Майами, Флорида: **+1(954)274-4435**

Время работы

Понедельник – Суббота: **9:00 - 21:00**
EDT

Воскресенье: **Закрито**

Адрес



Harbour Towne Marina, 850 NE 3rd St,
STE 213, Dania, FL 33004