

## LADY MAE — ALBEMARLE



**Builder:** [Albemarle](#)

**Year Built:** 2014

**Model:** Sport Yacht

**Price:** PRICE ON APPLICATION

**Location:** Singapore

**LOA:** 43' 0" (13.11m)

**Beam:** 15' 9" (4.80m)

**Min Draft:** 5' 1" (1.55m)

**Max Draft:** 5' 1" (1.55m)

**Cruise Speed:** 26.06928726 Kts. (30 MPH)

**Max Speed:** 30.41416847 Kts. (35 MPH)

Our experienced yacht broker, Andrey Shestakov, will help you choose and buy a yacht that best suits your needs **Lady Mae — Albemarle** from our catalogue. Presently, at Shestakov Yacht Sales Inc., we have a wide variety of yachts available on our sale's list. We also work in close contact with all the big yacht manufacturers from all over the world.

If you would like to buy a yacht **Lady Mae — Albemarle** or would like help answering any questions concerning purchasing, selling or chartering a yacht, please call **+1(954)274-4435**

# TABLE OF CONTENTS

---

TABLE OF CONTENTS	2
SPECIFICATIONS	5
Overview	5
Basic Information	6
Dimensions	6
Speed, Capacities and Weight	6
Accommodations	6
Hull and Deck Information	7
Engine Information	7
DETAILED INFORMATION	8
LIKE NEW 2014 ALBEMARLE 410C	8
Exclusions	11
Disclaimer	12
PHOTOS	13
Gallery+41c++1	13
Bait-Prep2	13
LadyMae1.jpg	13
DSC_1241	13
Bait-Prep1	13
Cockpit-Freezer1	13
Compass	14
Dinghy2	14
Electrical Panel1	14
Door-Step	14
Engine-Display	14
Engine-Room1	14
Engine-Room2	15
Engine-Room3	15

---

Engine-Room6	15
Freezer-&-Microwave	15
Freezer1	15
Fuses	15
Gallery+41c++6	16
Gallery+41c++9	16
Galley1	16
Galley2	16
Galley3	16
Head1	16
Head3	17
Head4	17
Helm2	17
Helm4	17
LadyMae2	17
Helm5	17
Helm-Chair1	18
Junior1	18
Junior2	18
LadyMae	18
photo 1	18
photo 4	18
photo 5	19
Pimp-Room1	19
Plan-41c	19
Pump-Room2	19
Radar	19
Rod-Holders	19
Saloon1	20

---

---

Saloon3	20
Saloon6	20
Stateroom1	20
Stateroom2	20
Stove	20
Switch-Box1	21
Switch-Box2	21
Water-Maker1	21
Water-Mater	21
CONTACTS	22
Contact details	22
Telephones	22
Office hours	22
Address	22

---

# SPECIFICATIONS

---

## Overview

---

Lady Mae is docked at One Degree 15 Marina, Sentosa Cove, Singapore. It is immaculately maintained by a full-time crew. It looks almost like a brand new boat internally and externally. The twin Caterpillar C12 engines (with 710 horsepower each) and the Onan 13.5 KW generator is serviced by Caterpillar.

She was installed with premium option equipment and furniture when it was built at Albemarle factory in Edenton, North Carolina.

The Albemarle 410 Convertible is an extended-range flybridge yacht whose comfortable accommodations allow her to double as a great family cruiser. One of the more notable aspects of the 410C is her roomy salon with its oversized windows and excellent headroom. Entertaining friends is easy with the L-shaped lounge that converts to a double berth and an L-shaped settee with a table. Just a few steps away, the tastefully appointed galley includes solid surface countertops, cherry cabinetry, a two-burner cooktop, SubZero refrigeration, and microwave/convection oven.

Much like the salon, the master stateroom of the 410C is surprisingly large and comfortable, even on extended expeditions. For guests or crew, there is a second stateroom with twin bunks and a standup head that is accessible from both the master stateroom and the hallway. The cockpit features a freezer in the port side module, a transom fish box, a lift-out box and a baitwell in the starboard module.

On the downside, the engine room is a tight fit. With her distinctive Carolina styling, the 410 is a standout boat wherever she goes. Cat C-12 710hp diesel cruise in the 28–30 knot range (low 30s top). Extended-range tournament machine with a wide beam, classic convertible styling hits all the right buttons.

Upscale interior with cherry trim, quality appointments boasts surprisingly spacious salon with facing L-shaped settees, large galley with Sub-Zero refrigeration, comfortable staterooms. The cockpit comes with 30-gallon Livewell/cooler, bait-prep center, beefy tuna door, cockpit, and transom fish boxes. Note spacious bridge with pod-style center helm, large engine room.

---

## Basic Information

---

**Category:** Sport Yacht

**Sub Category:** Convertible

**Model Year:** 2014

**Year Built:** 2014

**Country:** Singapore

**Fly Bridge:** Yes

**Cockpit:** Yes

---

## Dimensions

---

**LOA:** 43' 0" (13.11m)

**Beam:** 15' 9" (4.80m)

**Min Draft:** 5' 1" (1.55m)

**Max Draft:** 5' 1" (1.55m)

**Clearance:** 13' 4" (4.06m)

---

## Speed, Capacities and Weight

---

**Cruise Speed:** 26.06928726 Kts. (30 MPH) **Cruise Speed Range:** 350

**Max Speed:** 30.41416847 Kts. (35 MPH) **Max Speed Range:** 300 Kts.

**Water Capacity:** 350 Gallons

**Fuel Capacity:** 600 Gallons

---

## Accommodations

---

**Total Cabins:** 2

**Sleeps:** 6

**Crew Berths:** 1

**Crew Sleeps:** 2

**Crew Heads:** 1

---

## Hull and Deck Information

---

**Hull Material:** Fiberglass

**Deck Material:** Composite Fiberglass

**Hull Finish:** Stainless Steel

---

## Engine Information

---

**Engines:** 1

**Manufacturer:** Caterpillar

---

## DETAILED INFORMATION

---

### LIKE NEW 2014 ALBEMARLE 410C

---

\*\*\*3-26-2020 JUST REDUCED ANOTHER 60k\*\*\*/\*\*\* 2-1-2020 JUST REDUCED 50K\*\*\*Lady Mae is docked at One Degree 15 Marina, Sentosa Cove, Singapore. It is immaculately maintained by a full-time crew. It looks almost like a brand new boat internally and externally. The twin Caterpillar C12 engines (with 710 horsepower each) and the Onan 13.5 KW generator is serviced by Caterpillar.

She was installed with premium option equipment and furniture when it was built at Albemarle factory in Edenton, North Carolina.

The Albemarle 410 Convertible is an extended-range flybridge yacht whose comfortable accommodations allow her to double as a great family cruiser. One of the more notable aspects of the 410C is her roomy salon with its oversized windows and excellent headroom.

Entertaining friends is easy with the L-shaped lounge that converts to a double berth and an L-shaped settee with a table. Just a few steps away, the tastefully appointed galley includes solid surface countertops, cherry cabinetry, a two-burner cooktop, SubZero refrigeration, and microwave/convection oven.

Much like the salon, the master stateroom of the 410C is surprisingly large and comfortable, even on extended expeditions.

For guests or crew, there is a second stateroom with twin bunks and a standup head that is accessible from both the master stateroom and the hallway. The cockpit features a freezer in the port side module, a transom fish box, a lift-out box and a baitwell in the starboard module.

On the downside, the engine room is a tight fit. With her distinctive Carolina styling, the 410 is a standout boat wherever she goes. Cat C-12 710hp diesel cruise in the 28–30 knot range (low 30s top). Extended-range tournament machine with a wide beam, classic convertible styling hits all the right buttons. Upscale interior with cherry trim, quality appointments boasts surprisingly spacious salon with facing L-shaped settees, large galley with Sub-Zero refrigeration,



comfortable staterooms. The cockpit comes with 30-gallon Livewell/cooler, bait-prep center, beefy tuna door, cockpit, and transom fish boxes. Note spacious bridge with pod-style center helm, large engine room.

### **\*MECHANICAL EQUIPMENT\***

- 95 Gallon Fresh Water Tank with Pressurized System- Acme CNC Machined 4 Blade Nibral Propellers- Acoustical and Thermal Engine Room Insulation- Automatic Fireboy Fire Protection Systems- Bilge Pumps (3) with Indicator Lights, Float Switches (3), High-water Alarms (3)- Bright White Gelcoat Finish in Engine Room- Bronze Rudders with Stainless Steel Shafts- Bronze Struts- Dripless Shaft Seals- Electronic Side-Mount, Single Lever Engine Controls- Engine Alarm System- Engine Hour Meters- Engine Room Blowers- Engine Synchronizers- Fiberglass Mufflers- Flanged Bronze Seacocks on All Through-Hulls Below Water Line- Fuel/Water Separator Filters- Gauge for Holding and Freshwater Tanks- Gel Coated Engine Room Bulk Heads- Hydraulic Powered-Assisted Steering System- Hydraulic Trim Tabs- Pump/ Mechanical Room- Sea Strainers (External)- Stainless Steel Double Taper Shafts- Trolling Valves- Twin Freshwater Cooled Diesel Engines- Underwater Exhaust

### **\*NOTABLE UPGRADES\***

~ Upgraded to Twin Caterpillar C12 Engines. Each 710hp. Total power is 1420 hp. (287 Hours)~ Upgraded to 13.5kw Onan Generator~ Pipewelders Half Tower~ Pipewelder's 32' 2-spreader Outriggers with Bridge Release~ Release Marine Rybo-Style Wheel (Chrome)~ 2x Release Marine Teak Helm Chairs~ SeaRecovery 350 gal/day Water Maker~ Sidepower 24V Electric Bow Thruster~ Walker Bay SL270 Dinghy with Yamaha OBM

### **\*NAVIGATION AND SONAR SYSTEM\***

~ 2x Raymarine E165 15.4" Hybridtouch Multifunction Display~ Ray Star 130 Gps Receiver~ Smartpilot X-30 Corepack~ p70r Autopilot Control~ Ray218e Fixed Mount Vhf/Hailer~ Ra3048shd 12kw 48" Super Hd Digital Open Array Radar~ Cp450c Clear Pulse Sonar Module~ B265lh Bronze Thru-Hull Transducer With Temp, 1 Kw Includes Fairing

### **\*ENTERTAINMENT SYSTEM\***

~ 42" Panasonic LED TV (THL42ET60S) – Saloon~ 32" Sony LED TV (KDL-32W674A) -Master Stateroom~ DUNE Gigabit Network Media Player~ SONOS Playbar~ SONOS PLAY:3~ SONOS Subwoofer~ Fusion IP700I Stereo and 4 MS-FR6021 speakers

---

**\*ACCOMMODATIONS\*****\*MAIN CABIN / SALON\***

- Reverse Cycle Air Conditioning/ Heat System – 40,000 BTUs- Carpeting Throughout- Chrome Finished Positive Catch Push Button Latches on All Cabinetry- Custom Cherry Cabinetry with Satin Finish- Coast Guard Safety Kit- Entertainment Center with TV/DVD, AM/FM/CD- Ice Maker- LED Rope Lighting throughout Cabin- Sofas (2) w/ Rod Storage Beneath- Whisper Wall® Treatment Throughout

**\*FOREWARD STATEROOM\***

- Carpeting- Central Vacuum System- LED Rope Lighting- Oversized Cedar-Lined Hanging Lockers (2)- Recessed Indirect LED Lighting- Rod Storage Locker- Storage Drawers- Queen Size Bed with 6-Inch Spring Mattress and Storage

**\*SECOND STATEROOM\***

- Carpeting- Cedar Lined Hanging Locker- LED Recessed Indirect Lighting- Solid Surface Bunkside Table- Storage Drawers- Twin Bunks- Wet Locker Access from Hallway

**\*HEAD\***

- Electric Head- Exhaust Fan- LED Lighting- Medicine Cabinet- Mirror- Non-Skid Floor- Separate Stall Shower with Automatic Sump Pump- Solid Surface Vanity with Sink and Storage- Towel Bars and Toilet Paper Holders

**\*ADDITIONAL EQUIPMENT\***

Entertainment System:- 42” Panasonic LED TV (THL42ET60S) – Saloon- 32” Sony LED TV (KDL-32W674A)- DUNE Gigabit Network Media Player- SONOS Playbar- SONOS PLAY:3- SONOS Subwoofer- Fusion IP700I Stereo and 4 MS-FR6021 speakers. Furniture- Deluxe Décor Package w/ Upgraded Corian® Ultra Leather Sofa and Upholstered Headboard

**\*GALLEY EQUIPMENT\***

- AC/DC Refrigerator / Freezer Drawers- Electric, Two-Burner Cook Top, Recessed, with Cover- LED Countertop Lighting- Microwave/Convection Oven- Solid Surface Countertop with Sink- Storage Cabinets and Drawers- Teak and Holly Sole in Galley- Trash Receptacle

---

**\*ELECTRONICS & NAVIGATION\***

- Raymarine E165 15.4" Hybridtouch Multifunction Display- Ray Star 130 Gps Receiver- Cp450c Clear Pulse Sonar Module- B265lh Bronze Thru-Hull Transducer With Temp, 1 Kw Includes Fairing- Smartpilot X-30 Corepack- p70r Autopilot Control- Ray218e Fixed Mount Vhf/Hailer- Ra3048shd 12kw 48" Super Hd Digital Open Array Radar

**\*DECK & HULL\***

- Anchor Locker Hatch- Anodized Aluminum Bow Rail- Bow Pulpit with Anchor Roller- Bomar Hatch with Screen and Shade- Freshwater Wash Down Spigot in Anchor Locker- Non-Skid Surface- Stainless Steel Bow, Stern and Spring Cleats- Stainless Steel Stern Hawse Pipes

**\*COCKPIT\***

- 50 Amp Shore Power Connection- Fresh and Raw Water Washdown- Large, Insulated In-Deck Fishbox with Macerator- LED Courtesy Lighting Under Gunwales- Live Bait Well- Molded-in Boarding Steps, Port & Starboard- Scuppers for Self-Bailing- Stainless Steel Flush-mounted Rod Holders (4)- Tackle/Bait Prep Center Including Tackle Storage, Sink, Ice Box (Ready for Optional Freezer)- Transom Door- Transom Fishbox

**\*FLY BRIDGE\***

- Bench Seating w/ Storage Below- Complete Instrumentation with LED Lighting- Drink Holders- Flush Mounted Compass with Light- Locking Rod and Gaff Storage- Non-Skid Surface- "Palm Beach Style" Pod Helm- Pedestal Mounted Helm Seats (2)- Rocker Style Switch Panel with Backlights- Stainless Steel Steering Wheel- Trim Tab Switches with Indicators

Located in Singapore

---

**Exclusions**

Owner's personal belongings.

## Disclaimer

---

The Company offers the details of this vessel or yacht in good faith but cannot guarantee or warrant the accuracy of this information nor warrant the condition of the vessel. A buyer should instruct his representatives, agents, or his surveyors, to investigate such details as the buyer desires validated. This vessel or yacht is offered subject to prior sale, price change, or withdrawal without notice.

# PHOTOS

**Bait-Prep2**



**Gallery+41c++1**



**LadyMae1.jpg**



**DSC\_1241**



**Bait-Prep1**



**Cockpit-Freezer1**



**Compass**



**Dinghy2**



**Electrical Panel1**



**Door-Step**



**Engine-Display**



**Engine-Room1**



**Engine-Room2**



**Engine-Room3**



**Engine-Room6**



**Freezer-&-Microwave**



**Freezer1**



**Fuses**



**Gallery+41c++6**



**Gallery+41c++9**



**Galley1**



**Galley2**



**Galley3**



**Head1**





**Head3**



**Head4**



**Helm2**



**Helm4**



**LadyMae2**



**Helm5**



**Helm-Chair1**



**Junior1**



**Junior2**



**LadyMae**



**photo 1**



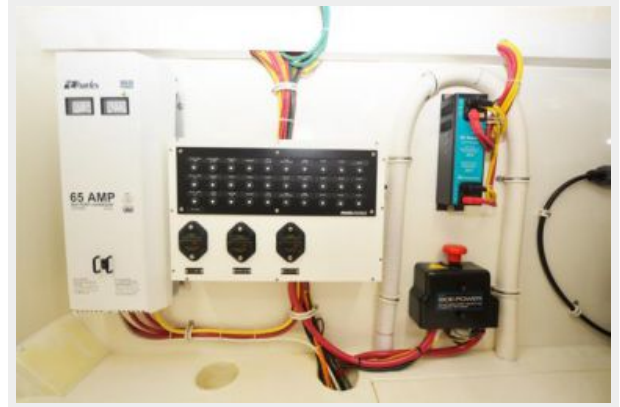
**photo 4**



photo 5



Pimp-Room1



Plan-41c



Pump-Room2



Radar



Rod-Holders



**Saloon1**



**Saloon3**



**Saloon6**



**Stateroom1**



**Stateroom2**



**Stove**



**Switch-Box1**



**Switch-Box2**



**Water-Maker1**



**Water-Mater**



# CONTACTS

---

Andrey Shestakov, leading yacht broker of the sales department of Shestakov Yacht Sales Inc. Shestakov Yacht Sales Inc., the official representative of the Miami/Fort Lauderdale FL headquarters.

## Contact details

---

Email: [andrey@shestakovyachtsales.com](mailto:andrey@shestakovyachtsales.com)

Web: [shestakovyachtsales.com/en/](http://shestakovyachtsales.com/en/)

## Telephones

---

USA: +1(954)274-4435

## Office hours

---

Monday – Saturday: **9:00 - 21:00** EDT

Sunday: **closed**

## Address

---



Harbour Towne Marina, 850 NE 3rd St,  
STE 213, Dania, FL 33004