

NINA LU — WESTPORT



Судостроитель: WESTPORT

Год постройки: 2011

Модель: Моторная яхта

Цена: **ЦЕНА ЯХТЫ ПО ЗАПРОСУ**

Местонахождение: United States

Длина общая: 130' 0" (39.62m)

Ширина: 26' 0" (7.92m)

Макс. осадка: 6' 8" (2.03m)

Крейс. скорость: 16 Kts. (18 MPH)

Макс. скорость: 26 Kts. (30 MPH)

Купить **NINA LU — WESTPORT** а также выбрать подходящую вам яхту из нашего каталога яхт вам поможет опытный яхтенный брокер Андрей Шестаков. На сегодняшний день компания **Shestakov Yacht Sales Inc.** имеет большое количество яхт в собственном списке продаж, а также тесно сотрудничает со всеми крупными яхтенными производителями по всему миру.

Для того чтобы купить яхту **NINA LU — WESTPORT** а также проконсультироваться по любому вопросу связанному с покупкой, продажей, чартером яхт позвоните по телефону **+7(918)465-66-44**.

ОГЛАВЛЕНИЕ

ОГЛАВЛЕНИЕ	2
ХАРАКТЕРИСТИКИ	6
Обзор	6
Основная информация	6
Размеры	6
Скорость, вместимость и масса	6
Размещение	7
Корпус и палуба	7
Информация о двигателе	7
ПОДРОБНОЕ ОПИСАНИЕ	8
Overview	8
Main Salon	9
Dining Area	9
Galley and Laundry Equipment	10
Master Stateroom	10
Master Head	11
VIP Guest Stateroom - Port	11
VIP Head - Port	11
VIP Guest Stateroom - Starboard	12
VIP Head - Starboard	12
Twin Guest Stateroom	12
Crew Quarters	13
Skylounge	13
Pilothouse	14
Communication and Navigation Systems	14
Electrical Systems	16
Exterior Decks	17
Deck Equipment	17

Main Machinery	20
Safety, Security and Fire Fighting Equipment	20
Tenders and Toys	21
2018 Upgrades	22
Broker Comments	22
Исключения	22
Отказ от ответственности	23
ФОТОГРАФИИ	24
Main Salon	24
Main Salon	24
Main Salon	24
Dining Area	24
Dining Area	24
Stairway to Upper Deck	24
Galley	25
Galley	25
Master Stateroom Entryway	25
Master Stateroom	25
Master Stateroom	25
Master Bath	25
Stairway to Guest Accommodations	26
Guest Stateroom	26
Guest Stateroom	26
Guest Bath	26
Twin Stateroom	26
Twin Bath	26
Twin Stateroom	27
Twin Bath	27
Skylounge	27

Skylounge	27
Skylounge	27
Pilothouse	27
Helm	28
Pilothouse	28
Pilothouse Seating	28
Flybridge	28
Flybridge Seating	28
Flybridge	28
Flybridge	29
Jacuzzi	29
Jacuzzi	29
Sundeck	29
Sundeck	29
Foredeck	29
Foredeck	30
Aft Deck	30
Aft Deck	30
Aft Deck Bar	30
Aft Deck Stairway	30
Swim Platform	30
Engine Room	31
Engine Room	31
Engine Room	31
Engine Room	31
Crew Quarters	31
Crew Quarters	31
Crew Cabin	32
Crew Cabin	32

Aerial Profile	32
Starboard Bow Profile	32
Starboard Profile	32
Running	32
Layout	33
КОНТАКТЫ	34
Контактная информация	34
Телефоны	34
Время работы	34
Адрес	34

ХАРАКТЕРИСТИКИ

Обзор

NINA LU is a 40 meter Westport built in 2011 and recently refit in 2018. She is found in excellent condition as she has had incredible care her entire life. Her present owner has done a tremendous number of quality improvements and upgrades that will prove current for years to come. She is ABS and MCA compliant. We welcome your inspection of this gorgeous 40 meter Westport, you will not be disappointed!

Основная информация

Тип судна: Моторная яхта

Модельный год: 2011

Год постройки: 2011

Год обновления: 2018

Страна: United States

Размеры

Длина общая: 130' 0" (39.62m)

Ширина: 26' 0" (7.92m)

Макс. осадка: 6' 8" (2.03m)

Скорость, вместимость и масса

Крейс. скорость: 16 Kts. (18 MPH)

Дальность на крейсерской скорости:
3000

Макс. скорость: 26 Kts. (30 MPH)

Чистый вес: 333 Pounds

Вместимость воды: 1740 Gallons

Вместимость сточного бака: 1740
Gallons

Объем топливного бака: 9900 Gallons

Размещение

Всего кают: 5

Спальные места: 10

Каюты экипажа: 4

Спальных мест экипажа: 8

Корпус и палуба

Материал корпуса: Fiberglass

Комплектация корпуса: Semi-Displacement

Дизайнер корпуса: William Garden

Дизайнер экстерьера: Gregory C. Marshall

Дизайнер интерьера: Westport

Информация о двигателе

Двигатели: 2

Производитель: MTU

Модель: 12V4000

Тип двигателя: Inboard

Тип топлива: Diesel

ПОДРОБНОЕ ОПИСАНИЕ

Overview

NINA LU, a 2011 Westport 40m hull # 4 is found in excellent condition with many recent upgrades., NINA LU has had only three owners, all keeping her to the highest yacht standards. Her present ownership just completed her a refit to update the décor to a modern look and her nav and AV to today's standards. She is ABS and MCA compliant.

Boarding NINA LU on the aft deck one will walk through a set of automatic doors to enter her main salon, where one will be received by a warm, open and comfortable seating area. The salon offers a modern feel with four occasional chairs, coffee table and sofa along with an entertainment center with a pop up 60" HDTV 4K with surround sound all controlled by Crestron. The dining area is forward of the main salon and can seat up to ten guests with buffets to port and starboard. There is a door between the dining area and galley making for easy dining services. Forward of the dining area to starboard one will reach a formal foyer with access to the vessel through side boarding. Here one will find a day bathroom. To port of dining one will enter a state-of-the-art galley with ample fringe/freezes counter space and with the best of cooking galley operation appliances

NINA LU on-deck master suite is forward of the main foyer with entry through the owner's study into the master cabin with king bed, bath with double sinks, large shower, toilet and bidet. There is a vanity to port, a walk-in closet forward and ample storage throughout. The entertainment center has a 50" HDTV 4K, with full entertainment and surround sound. Going back to the foyer one will find a stairway that goes up to the skylounge and pilothouse or down to the guest accommodations. Going down one will land in the guest foyer where four guest cabins are found. The first VIP stateroom is located aft on the lower deck to port with a centerline king- sized bed with two nightstands, dresser, closet, private bathroom and shower, plus an entertainment center with LG 37" 4K with full entertainment. The second VIP stateroom is located to starboard aft on the lower deck and has a centerline king-sized bed with two nightstands, dresser, closet, private bathroom and shower, plus an entertainment center with LG 37" 4K. One of the twin cabins is located to starboard with the third berth located outboard and above the twin berth. The 4th guest stateroom found to port forward is twin cabin is to port with two berths. Both twin guest cabins have a dresser, closet, private bathroom and shower plus an entertainment center with LG 32" 4K.

NINA LU's sky lounge is a favorite gathering area with spacious seating, a full bar with three stools, game table, relaxing L-Shape sofa, fireplace with and a Samsung 50" 4K above and full entertainment center with surround sound. From the skylounge one can go aft through an

automatic door to the bridge deck aft where one will find covered seating, this area also gives you access to the main deck aft below and the sundeck above. In addition, going forward one will pass by a day head on route to the pilothouse where one will find all the communication and nav equipment one could need.

NINA LU's sundeck is found by going up the stairs from the bridge deck aft. Reaching the sundeck, one will find a U-Shape seating area with tables perfect area for lounging. Also located on the sundeck is a dining table for eight with protection from weather or sun with sun awnings. There is a gorgeous bar with four stools, BBQ and fridge and a Jacuzzi forward of the bar with surround sun pads able to accommodate many guests There is full entertainment with a 52" Sunview.

NINA LU' s aft deck makes for an excellent gathering space with 42" Sunview HDTV situated above the full bar with three stools. Additional seating on a custom U-Shape settee with two teak adjustable tables. From the aft deck one has easy access to the water, tender and water sports. Her walk-around teak decks lead to the bow, which four loungers and further forward on the bow one will find an additional seating area.

Main Salon

The main salon is an expansive and elegant area. The 50" TV rises out of the aft corner cabinet. The aft entry door is stainless steel framed, glass, open/close sliding mechanism with pneumatic seal. Featuring designer flooring and wall coverings, one sofa, cocktail table, three occasional chairs, three end tables and game table with four chairs.

The day head is located off the starboard entry foyer and features a stone top vanity, vessel sink, toilet, stone flooring and coordinated bath accessories.

- Samsung 55" 4K TV
- Surround sound receiver/speaker and sub-woofer
- Direct TV satellite receiver
- Samsung Blu-Ray player and USB
- Crestron iPad control
- Kaleidescape movie/music player

Dining Area

Forward of the main salon is the formal dining area. Servers have easy access from the galley via a dual-hinged access door. The formal dining table, made of Pommele Sapele wood with Mahogany accents, seats ten guests. There is buffet storage to port, starboard and aft, with storage for sixteen 5-piece place settings of china, flatware, stemware, and A/V units.

Galley and Laundry Equipment

- Northland 30" reach-in refrigerator
- Northland 18" reach-in freezer
- Built-in standard oven by Gaggenau
- Built-in convection/steamer oven by Gaggenau
- APW Wyott countertop finishing oven
- Five-burner Cook Tek Induction Cook Top
- Panasonic 1000 watt programmable microwave
- Fisher Pakel high temp double drawer dishwasher
- Perlick 48 bottle wine cooler
- Perlick ice maker
- Polished chrome hot water dispenser by Insinkerator
- Broan trash compactor
- Speakers built into the unit
- Direct TV satellite receiver
- Crestron iPad control
- Kaleidescape movie/movie player

Master Stateroom

The spacious master stateroom features a king-sized berth with upholstered headboard, built-in dressers, an entertainment system, and A/V equipment complemented by Crestron control, office area with desk, vanity table/desk and private his/her dressing rooms with ample storage, dresser, hanging space and designer accent lighting. Additional master stateroom features include:

- Nightstands
- Vanity table/desk and chair
- Lighted makeup mirror
- Master office – desk and chair
- Samsung 50" 4K TV
- Surround sound receiver/speaker and sub-woofer (plus speakers in master head)
- Direct TV satellite receiver
- Samsung Blu-Ray player and USB
- Crestron iPad control
- Kaleidescape movie/music player

- Halogen downlights
- Safe
- Designer wall treatment and flooring
- Dressing room: dressers and hanging rods each side

Master Head

- Vanity with stone countertop
- Dual china sinks
- Fixtures and bath accessories
- Designer marble flooring
- Mirrors over vanities in his/her heads
- Lighted wall-mounted makeup mirror
- Headhunter Royal Flush Hydro-Vac toilet
- Kohler Bidet
- Shower with frameless tempered glass door and marble surround

VIP Guest Stateroom - Port

- King sized berth
- Upholstered headboard
- Nightstands with drawers in the base
- LG 37" 4K TV
- Pair of speakers
- Direct TV satellite receiver
- Samsung Blu-Ray player and USB
- Crestron iPad control
- Kaleidescape movie/music player
- Designer wall treatments and flooring
- Built-in A/V equipment complimented by Crestron control

VIP Head - Port

- Vanity of Pommele Sapele wood with Mahogany accents
- Stone countertops
- China sink
- Fixtures and bath accessories
- Glass: fixed oval port light with removable stainless cover
- Designer stone flooring
- Headhunter Royal Flush Hydro Vac
- Kohler bidet

- Shower with frameless tempered glass doors
- Lighted makeup mirror

VIP Guest Stateroom - Starboard

- King sized berth
- Upholstered headboard
- Nightstands with drawers in the base
- LG 37" 4K TV
- Pair of speakers
- Direct TV satellite receiver
- Samsung Blu-Ray player and USB
- Crestron iPad control
- Kaleidescape movie/music player
- Designer wall treatments and flooring
- Built-in A/V equipment complimented by Crestron control

VIP Head - Starboard

- Vanity of Pommele Sapele wood with Mahogany accents
- Stone countertops
- China sink
- Fixtures and bath accessories
- Glass: fixed oval port light with removable stainless cover
- Designer stone flooring
- Headhunter Royal Flush Hydro Vac
- Kohler bidet
- Shower with frameless tempered glass doors
- Lighted makeup mirror

Twin Guest Stateroom

- Twin Berths
- Upholstered headboard
- Designer wall treatments and carpeting
- Built-in dressers
- Nightstands and wardrobes
- LG 32" 4K TV
- Pair of speakers
- Direct TV satellite receiver
- Samsung Blu-Ray player and USB

- Crestron iPad control
- Kaleidescape move/music player
- Built-in A/V equipment is controlled by Crestron

Crew Quarters

The captain's cabin with private head accommodates two persons. Crew quarters with two heads accommodate four in two cabins. There is immediate crew access to the galley via the direct galley/crew quarters stairway. The fourth crew cabin (engineer's cabin) is located aft of the engine room with private bath. Each room has a TV and Crestron iPad control.

Crew Galley/Lounge

- Dining settee with table/cabinet
- Washer/dryer with locker above (2 sets)
- Two-drawer Perlick refrigerator
- Microwave
- TV
- Crestron iPad control
- Satellite receiver
- Blu-Ray player
- Counter with sink/cabinet storage
- VHF and depth sounder

Skylounge

The upper lounge entertaining area is located aft of the pilothouse with sliding glass doors to the Boat Deck. Skylounge features include:

- Wet bar
- Perlick under-counter refrigerator and icemaker
- Settee
- Desk with loose chair
- Fireplace with TV above mantel
- Four barstools
- A/V equipment
- Samsung 50" 4K TV
- Surround sound receiver/speaker and sub-woofer
- Direct TV satellite receiver

- Samsung Blu-Ray player and USB
- Crestron iPad control
- Kaleidescape movie/music player
- Designer mahogany wall treatment
- Halogen down lights
- Designer flooring
- Upper lounge day head features vanity, mirror, toilet, designer flooring and wall treatment

Pilothouse

The comfortable control center features a raised and expansive settee where the owner/guests may enjoy a panoramic view. The high-quality joinery work established throughout the vessel is also evident in the pilothouse dashboard, with its extensive array of navigational equipment. Other features include:

- Leather-covered dash panels
- Pommele Sapele wood panels with solid mahogany edge
- Traditional wooden helm wheel
- Chart table to port side of main helm
- Settee and wood settee table
- (2) Crown Mariner helm chairs, matching the settee
- Halogen downlights
- Built-in desk and loose chair
- Designer floor covering and wall treatment
- Charting kit
- Logbook

Communication and Navigation Systems

Pilothouse Navigational Equipment

- Bridge Switching Systems (BSS) Five 26" widescreen Nauticomp displays
- Chart Plotter: (2) MarineNav Timezero
- GPS: (2) Furuno commercial-grade WAAS/GPS units in pilothouse
- AIS: Furuno FA-170 interfaced to radar and electronic chart with pilot plug
- Radar: (2) Furuno FAR-2117 X-Band Radars, one with 8.0 ft. Open Array and one with 6.5 ft. Open Array; 96nm range. Radars are heading stabilized with speed input for ARPA input to both radars.
- Wing stations: Port and Stbd, outside pilothouse
- Molded composite covers
- Electronic engine controls

- Main engines start and stop
- Jog steering
- Rudder angle indicator
- Bow thruster
- Horn button

Communication Equipment

- VHF: (2) DSC Furuno FM-8800 in pilothouse w/emergency battery back-up
- Furuno FM-300 in crew lounge
- Handheld GMDSS VHF radio w/desktop chargers
- SSB: Furuno FS1570 with DSC capability
- G.P.I.R.B. McMurdo G5 Smartfind plus 406 MHz GPS EPIRB
- McMurdo class S4 Rescue SART
- Navtex: Furuno NX700 paperless Navtex receiver
- Furuno FE800 depthsounder

Satellite Communication (SATCom) Components

- Fleet Broadband FB500 for voice & internet access, voice connected through phone system
- VSat Sea Tel WaveCall 4006 – internet/data and (2) VOIP lines
- Satcom “C”: Furuno Felcom 15 Inmarsat SatCom C
- Furuno PP510 printer
- Furuno Felcom 15 SSAS upgrade kit
- Furuno GPS module kit
- Sat Phone: Iridium 9505 with marine mounting kit

Telephone System

Panasonic Digital telephone system with 20 stations and 20 phone units, 2 phone stations have LCD displays and 5 stations are cordless. Cordless phones are in the master stateroom, skylounge, pilothouse, and 2 in the salon (1 intended for the Aft Deck). Telephone systems connected to Satcom, cell phone, 2 VOIP and shore phone voice line. Includes a single 100' telephone/cable TV combination shore cord.

- Panasonic PBX TDA 100
- (2) 24-Button LCD display phones
- (13) 24-Button speaker phones

- (5) Cordless phone system
- Gangway intercom with sockets at side deck and passarelle
- APC 100VA 670W Smart UPS
- Shore Phone: weatherproof phone connection at stbd bustle locker
- Cellular phone: (2) Telular SX7e GSM Quad Band GSM Cellular Phone
- WiFi: Marina Hotspot Amplifier, GeoSat ECHP

Steering

- Gyrocompass
- Simrad GC-85 Compact System interfaced for display on Autopilot, Radars and Electronic Chart
- Magnetic compass: Ritchie F600 G-5 mounted centerline at Pilothouse helm station
- Halcyon fluxgate compass interfaced with Brooks & Gatehouse weather instruments

Autopilot

- Autopilot: Simrad AP50 with Gyro input and back-up
- Fluxgate Rate Compass
- Dedicated RFU to steering shelf for direct feed to autopilot

Depth/Speed/Wind

- B & G Hydra 3000 Graphic Function Display w/ air temp, barometric pressure. Graphic Function displays in pilothouse, crew lounge
- Color Sounder: Furuno FCV-1200 BB color video sounder with display on BSS

Doppler Log

- Furuno DS80 Doppler Speed Log
- APC 1000VA 670W Smart UPS, full load runtime 6 minutes
- Satellite Television
- SeaTel 4004 TV-At-Sea Gyro stabilized receiver antenna with USA and Latin America LNB

Electrical Systems

- Generators: (2) Northern Lights 92kW, 1800 RPM
- Generator hours: Port 10,136; Starboard 9,064 (March 2020)

- Shore Power: 50/60 hertz, single-phase, three-phase, high/low voltage
- (2) ASEA brand shore power converters - updated

Batteries

- Newmar 95 amp/24 V DC Ship's system
- Newmar 20 amp/24V DC main engine starting bank
- Newmar 20 amp/24V DC generator starting bank
- Newmar 95 amp/24V DC for emergency bank
- Newmar 95 amp/24V DC for reserve bank

Exterior Decks

The exterior decks on NINA LU provide a variety of ideal lounge and entertainment spaces. The Aft Main Deck area allows for covered alfresco dining while providing a settee seating area and an outdoor bar with a drop-down TV for entertaining. The Aft Bridge Deck provides an area for lounging in the sun and has a BBQ grill and drop-down TV.

Forward of the Bridge Deck is more deck space for enjoying the sun on chaise lounges. The Sun Deck has a large hard top with water misters which allows guests to enjoy the Jacuzzi surrounded by sun pads in the sun or under some shade while enjoying a magnificent breeze. Dining alfresco on the Sun Deck is also an option for enjoying the beautiful sunsets at dinner.

Deck Equipment

Swim Platform

- Teak decking
- Wash down hose bibs
- Swim ladder sockets
- (4) Pop-up cleats
- Gasoline filling station
- Stainless steel swim ladder
- Steps to main deck, with handrails, port and starboard
- Capstans port and starboard
- (6) Underwater lights
- 2" removable staple rails

Aft Deck

- Full-service bar with four loose bar stools, large cushioned aft settee with two small (fixed pedestal) coffee tables and A/V equipment
- Runco 42" Flip-down LCD Exterior TV
- (2) Pairs of speakers
- Direct TV satellite receiver
- Crestron iPad control
- Kaleidescape movie/music player
- Teak decking
- Gloss finish teak dining table (fixed pedestal)
- (10) Dining armchairs with cushions
- Settees facing forward with cushions and covers
- Full-service bar with ice bin, bottle storage and stone countertop
- Perlick refrigerator
- Misters
- Lighting control for the aft deck
- Entertainment system controls
- Wing doors; locking plexiglass
- Wash down hose bibs
- Stainless steel rails

Foredeck

- Pair of speakers
- Crestron iPad control
- Teak decking
- Wash down hose bib
- Flag staff
- Chrome Ship's bell
- Deck lighting
- Two anchor windlasses/capstans
- Hatch: chain locker access and fender storage
- Settee: with fixed gloss finish teak pedestal table
- Foredeck seat with storage underneath for windlass control and chain wash down control
- Bow "V" seat with built-in cushion

Sundeck

- (2) Pairs of speakers
- Direct TV satellite receiver
- Crestron iPad control

- Kaleidescape movie/music player
- Teak decking
- Misters
- Wet bar with Perlick two-drawer refrigerator
- Mast – FRP
- Wash down hose bibs
- Large, varnished teak dining table
- (10) Dining armchairs with cushions
- (2) Small end table
- (5) Chaise lounges and cushions
- Kahlenberg air horn Model F3 with light
- Custom hot tub with multi-zone jets
- Hard top integrated with mast
- Stainless steel handrail
- Courtesy flag halyards; port and starboard on mast
- (2) Storage lockers

Forward Observation Deck

- Teak decking
- Stainless steel handrails

Boat Deck

- Runco 42" Flip-down LCD exterior TV
- Pair of speakers
- Direct TV satellite receiver
- Boat iPod
- Crestron 2-way touch panel control
- Kaleidescape movie/music player
- Teak decking
- Misters
- Cocktail table with (2) love seats with cushions and (2) armchairs
- Wet bar with Perlick 2-drawer refrigerator under counter
- Custom electric BBQ grill with stainless housing - upgraded to larger unit
- Wash down hose bib
- 5' x 8' ensign flagstaff
- Composite mast
- Chocks for tender
- 3000 lb. davit w/ full hydraulic control & back up reserve power pack
- Polished stainless steel handrails

Main Machinery

- Main Engines: Engine Type: (2) x MTU DDC 12V4000, 2735hp each
- Engine hours: Port 2,915; Starboard 2,913 (March 2020)
- MTU Extended propulsion coverage
- Air Conditioning: Marine Air Model MCWLT-240W
- (5) Compressors
- Chillers: 208volt/3phase/60cycle/30 ton

Other Machinery

- Watermakers: (2) x Sea Recovery Aqua-Whisper 1800, total capacity 3600/GPD
- Stern Thruster: 16" dual prop, 55 hp hydraulic motor
- Bow Thruster: 16" dual prop, in-hull, 65 hp hydraulic motor
- Steering System: Digital hydraulic, via engine driven hydraulic pumps
- Stabilizer System: Zero speed Naiad 525, 22 sq. ft. fins

Safety, Security and Fire Fighting Equipment

Cameras

- (8) PTZ color cameras (two in eng. Room, two at exterior aft deck, port and stbd side, one at stbd side deck, one at port side deck, one on the mast facing aft, displayed on CCTV system)
- Monitoring station: with display on BSS
- Closed Circuit Television
- Night Vision Camera: FLIR M Series
- Quad split screen color display: controlled by Crestron controller

Signals and Lights

- Ship's whistle
- Ship's bell
- Air powered horn: Kahlenberg F-2 five trumpets
- Kahlenberg M511-A signal timer
- Full array of running lights
- Carlisle & Finch 200-watt xenon, 15 million candlepower, remote controlled search light

Firefighting Equipment

The interior of the vessel is protected by sprinklers which draw from the ship's fresh water supply. In the event the water supply is depleted the system will revert to seawater use without interruption. Engine room is protected by gas smothering FM200 system. Water delivery is by two pumps, operating individually or in tandem, depending upon demand. A small pressure tank maintains the stand-by pressure in the system. Control panels are in the engine room with a mimic display in the pilothouse.

There are four fire stations and three pumps (the main AC pump, a back-up diesel pump which is fixed, not portable, and the third is the AC bilge pump which can be switched over to run as a fire pump.) Each station contains a hose, angle valve and high/low volume nozzle. The primary electric fire pump can be started from any fire station or locally.

- Hoses: (7) 1 ½ "x 50' FM listed, lay flat type
- ABS approved fire nozzles: (1) at each of the four hydrant stations
- Pump, primary: centrifugal, flooded suction, 66gpm@40psi
- Pump, back-up: diesel powered portable, flooded suction centrifugal
- Strainer: sea suction strainer for fire/bilge manifold, bronze 2" Y strainer
- Seawater intake: bronze with stainless steel grate
- Hose rack: fiberglass construction with rolled hose storage in fire station
- Galley Hood Fire System: independent, fixed system is located in the main galley in the hood above the stove
- Fire extinguishers: dry chemical (9) ten lb., (9) five lb., (1) three lb. (1) ten lb. Carbon Dioxide

Safety Equipment

- Equipment required for charter service under Cayman Islands Shipping Registry and MCA compliancy for up to 12 passengers.
- Life Raft: (4) ten-man Solas approved life rafts mounted on Boat Deck rails
- (23) Coast Guard approved adult life preservers w/water lights
- (6) Coast Guard approved child life preservers w/water lights
- (4) 30" diameter ring buoys
- (17) Immersion suits
- Flare kit
- Perko Bell
- Medical Kit – MCA compliant

Tenders and Toys

- 16' Avon Widebody ST, 4-stroke 90hp Yamaha outboard starboard console
- VHF radio with fold-down antenna
- Compass/depthsounder
- Cover
- Bluetooth stereo
- Ski pole 2018

2018 Upgrades

- Full Nav in Pilothouse
- (5) 26" Nauticomp glass bridge elite displays
- Crestron Digital Media 8x8 distribution to (5) displays from Crestron
- Crestron TSW-1060 touchscreen
- MarineNav Solid State navigation computers
- Furuno 21xx 25kW radars
- (2) Furuno GP170 DGPS
- Furuno FA-170 AIS
- Furuno DS80 doppler log
- Furuno FE800 depth sounder
- FLIR M-625CS
- Elbex EXS166 switcher + (7) new 7200 series PTZ cameras
- Cobham Sailor 900 VSAT
- KVH FB 500 satellite phone
- Seatel 100 HDTV satellite TV antenna
- Simrad Gyro GC85 gyrocompass
- Simrad AP80 autopilot
- Furuno PG 500R
- Furuno FS-1575 SSB
- Furuno Navtex NX700
- All air conditioner air handlers and controls
- All new LED Lighting throughout

Broker Comments

NINA LU is the newest 40m Westport available on the market. She is found in excellent condition as she has had incredible care her entire life. Her present owner has done a tremendous number of quality improvements and upgrades that will prove current for years to come. We welcome your inspection of this gorgeous 40 meter Westport, you will not be disappointed!

Исключения

При продаже яхты исключаются личные вещи владельца.

Отказ от ответственности

Компания предоставляет описание судна или яхты добросовестно, но не может гарантировать точность этой информации, а также не ручается за техническое состояние. Покупатель должен проинструктировать своих агентов или оценщиков исследовать представленную информацию более подробно, по собственному желанию. Продажа судна или яхты, изменение цены или снятие с продажи будет происходить без предварительного уведомления.

ФОТОГРАФИИ

Main Salon



Main Salon



Main Salon



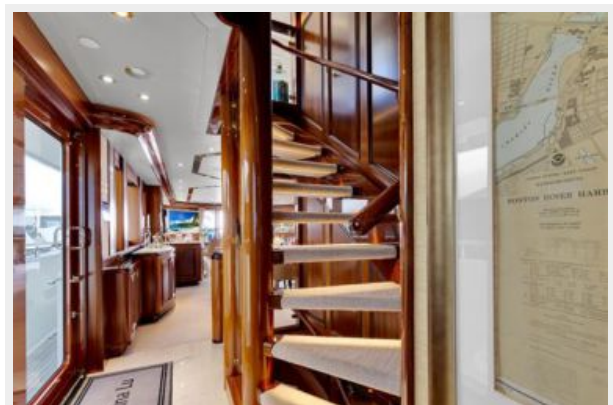
Dining Area



Dining Area



Stairway to Upper Deck



Galley



Galley



Master Stateroom Entryway



Master Stateroom



Master Stateroom



Master Bath



Stairway to Guest Accommodations



Guest Stateroom



Guest Stateroom



Guest Bath



Twin Stateroom



Twin Bath



Twin Stateroom



Twin Bath



Skylounge



Skylounge



Skylounge



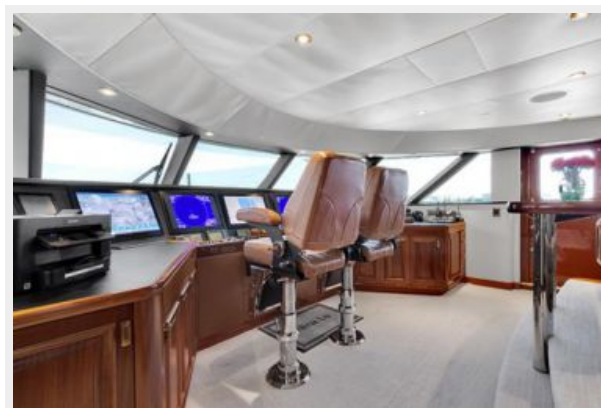
Pilothouse



Helm



Pilothouse



Pilothouse Seating



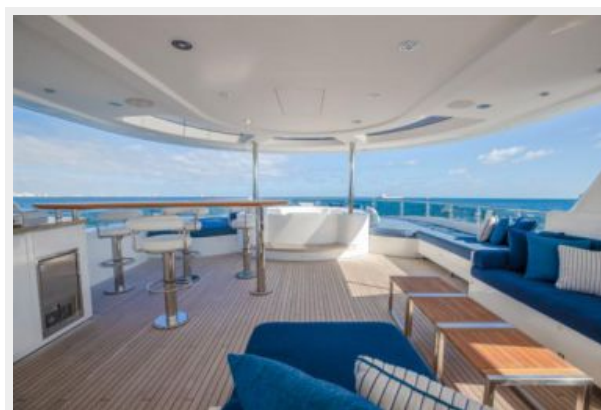
Flybridge



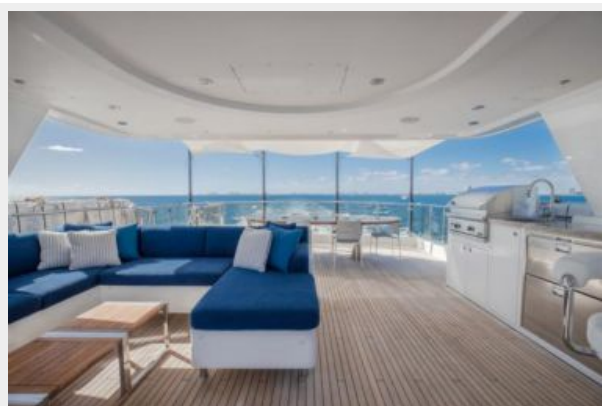
Flybridge Seating



Flybridge



Flybridge



Jacuzzi



Jacuzzi



Sundeck



Sundeck



Foredeck



Foredeck



Aft Deck



Aft Deck



Aft Deck Bar



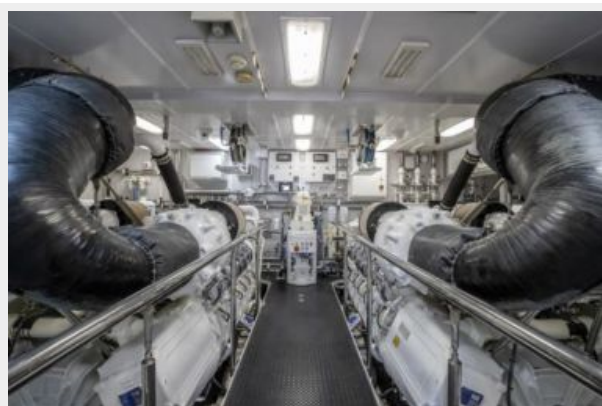
Aft Deck Stairway



Swim Platform



Engine Room



Engine Room



Engine Room



Engine Room



Crew Quarters



Crew Quarters



Crew Cabin



Crew Cabin



Aerial Profile



Starboard Bow Profile



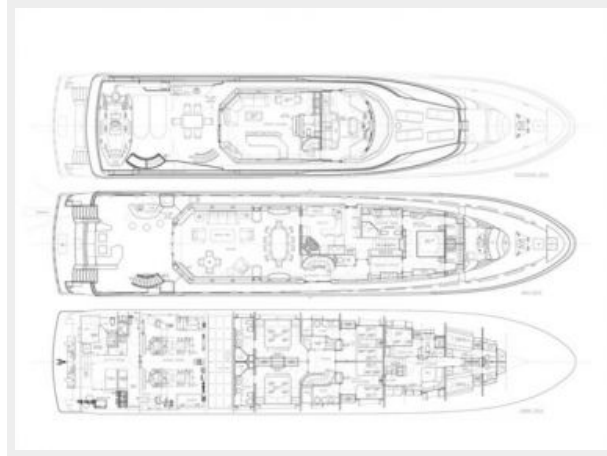
Starboard Profile



Running



Layout



КОНТАКТЫ

Андрей Шестаков (Andrey Shestakov) – ведущий яхтенный брокер отдела продаж яхт и судов компании Shestakov Yacht Sales Inc. Официальный представитель Shestakov Yacht Sales Inc. для русскоговорящих клиентов в центральном офисе компании в Майами/Форт Лодердейл/Флорида/США.

Контактная информация

Email: andrey@shestakovyachtsales.com

Web: shestakovyachtsales.com

Телефоны

Краснодарский край: **+7(918)465-66-44**

США, Майами, Флорида: **+1(954)274-4435**

Время работы

Понедельник – Суббота: **9:00 - 21:00**
EDT

Воскресенье: **Закрито**

Адрес



Harbour Towne Marina, 850 NE 3rd St,
STE 213, Dania, FL 33004