

ANTONIA — MONK



Builder: MONK

Year Built: 1993

Model: Trawler Yacht

Price: PRICE ON APPLICATION

Location: United States

LOA: 36' 0" (10.97m)

Beam: 13' 0" (3.96m)

Max Draft: 4' 0" (1.22m)

Cruise Speed: 7 Kts. (8 MPH)

Our experienced yacht broker, Andrey Shestakov, will help you choose and buy a yacht that best suits your needs **Antonia — MONK** from our catalogue. Presently, at Shestakov Yacht Sales Inc., we have a wide variety of yachts available on our sale's list. We also work in close contact with all the big yacht manufacturers from all over the world.

If you would like to buy a yacht **Antonia — MONK** or would like help answering any questions concerning purchasing, selling or chartering a yacht, please call **+1(954)274-4435**

TABLE OF CONTENTS

TABLE OF CONTENTS	2
SPECIFICATIONS	5
Overview	5
Basic Information	5
Dimensions	5
Speed, Capacities and Weight	5
Accommodations	5
Hull and Deck Information	6
Engine Information	6
DETAILED INFORMATION	7
MAIN DESCRIPTION	7
ANTONIA WALK THUR	7
ANTONIA GUEST STATEROOM	7
ANTONIA SALON	7
ANTONIA GALLEY	7
ANTONIA MASTER STATEROOM	8
ANTONIA ELECRTICAL	8
ANTONIA MECHANICAL	8
ANTONIA ELECTRONICS	8
DISCLAIMER	8
Exclusions	8
Disclaimer	8
PHOTOS	9
1 Port Main	9
2 Starboard 2	9
3 Starboard Deck Door	9
4 Port Side Decks	9
5 Starboard Side Decks	10

6 Forward Hatch	10
7 FlyBridge	10
8 Flybridge 2	10
9 Aft Deck 2	10
10 Davits	10
11 Dingy	11
12 Honda 2.3 Motor	11
13 Salon 2	11
14 Salon Settee	11
15 Lower Helm	11
16 Custom Galley	11
17 Galley 2	12
18 Master Suite	12
19 Centerline Queen	12
20 Master Storage	12
21 Master Storage 2	12
22 Custom Aft Stateroom	12
24 Master Separate Shower	13
23 Master Head	13
25 Forward Hanging Locker	13
26 V-berth	13
27 Guest Head	14
28 Electric Panel	14
30 Bow Pulpit	14
29 Aft Deck	14
31 Maxwell Windlass	15
32 Maxwell Windlass Controls	15
33 Vetus Bow Thruster	15
34 Garmin GPSMAP 5212	15

35 Engine	15
37 Engine 2	15
39 Xantrex Freedom SW	16
38 Genset	16
40 Battery Bank	16
41 Starboard Main	16
42 Starboard Bow	17
43 Port Main2	17
44 Documentation #	17
45 Name Plate	17
CONTACTS	18
Contact details	18
Telephones	18
Office hours	18
Address	18

SPECIFICATIONS

Overview

Antonia is a Monk 36 that has been customized by its owner to have additional storage and upgrades thru out the boat. Those changes where made to be user friendly for the 1st mate. She is a Great Loop veteran (2 trips) and is ready to go again. The interior of this Monk is striking in its appearance. Has custom wooden blinds thru out. She comes with davits and a Zodiac dingy. The Monk 36 is know for her sea worthiness and room she affords in a boat that is just 36' in lenght.

Basic Information

Category: Trawler Yacht	Model Year: 1993
Year Built: 1993	Country: United States

Dimensions

LOA: 36' 0" (10.97m)	LWL: 33' 0" (10.06m)
Beam: 13' 0" (3.96m)	Max Draft: 4' 0" (1.22m)
Clearance: 17' 11" (5.46m)	

Speed, Capacities and Weight

Cruise Speed: 7 Kts. (8 MPH)	Displacement: 18000 Pounds
Water Capacity: 120 Gallons	Holding Tank: 45 Gallons
Fuel Capacity: 320 Gallons	

Accommodations

Total Cabins: 2	Total Heads: 2
-----------------	----------------

Hull and Deck Information

Hull Material: Fiberglass

Engine Information

Engines: 1

Manufacturer: Perkins

Engine Type: Inboard

Fuel Type: Diesel

DETAILED INFORMATION

MAIN DESCRIPTION

Antonia is a Monk 36 that has been customized by its owner to have additional storage and upgrades thru out the boat. Those changes where made to be user friendly for the 1st mate. She is a Great Loop veteran (2 trips) and is ready to go again. The interior of this Monk is striking in its appearance. Has custom wooden blinds thru out. She comes with davits and a Zodiac dingy. The Monk 36 is know for her sea worthiness and room she affords in a boat that is just 36' in lenght.

ANTONIA WALK THUR

The Monk 36 is a classic trunk cabin layout. She has wide side decks with high rails for safety. The are two deck doors for easy of access. One is aft to port and the 2nd is Starboard by the lower helm. Once you are inside you have a salon with incorporates a galley along the aft starboard side of the salon and on the port side forward is a L-side settee and table. Moving forward past the lower helm to Starboard are steps down to your guest head and V-berth. There are privacy doors that close for your guest. Coming back up the steps moving aft down steps to the master stateroom. You have custom storage along both side and a center line queen. The master head is ensuite and has a separate shower. There are custom wooden blinds thru out this vessel. Going back up to the saloon you can access the Flybridge thru the aft port deck door and step up aft dcek then up to your flybridge. Visibility is excellent both fore and aft.

ANTONIA GUEST STATEROOM

The guest stateroom is forward and consist of a large V-berth with an ensuite head. There is a hanging locker that also gives you access to lower helm and your electric panel. There are both ports and a hatch for ventilation. There is storage drawers under the V-berth.

ANTONIA SALON

The salon is well layed out with a L-shaped settee with a table for dining, two deck doors to access you side decks, a galley that has custom storage features under the counter and a lower helm. Custom wooden blinds thru out the boat.

ANTONIA GALLEY

The galley is in the salon and has great storage that has been designed to make it easy for the 1st mate with custom drawers for easy access. The counter and sink area has been customized, you have a two burner electric cook top, GE convection oven and a Norcold refrigerator/freezer.

ANTONIA MASTER STATEROOM

Aft is the Master Stateroom with a Centerline queen and a ensuite head with separate shower, custom drawers on both sides of the bed, a night stand on the port side of the bed, the head countertops are granite.

ANTONIA ELECRITICAL

Onan 6kw gensetTwo 30 amp shore power connectionsShore power cordsCruise Air A/C one 8 btu and 12 btu with digital controlsXantrex Charger/inverterAll lights are LED'sVetus Bow ThrusterMaxwell Windlass with Upper helm controls

ANTONIA MECHANICAL

Single Perkins 135 hp with 2999 hoursOnan 6kw gensetMorse controls at both helms

ANTONIA ELECTRONICS

Raymarine RadarStandard Horizon GPS/ALSGarmin GPS map 5212Ritchie compassData Marine speed and depth

DISCLAIMER

The Company offers the details of this vessel in good faith but cannot guarantee or warrant the accuracy of this information nor warrant the condition of the vessel. A buyer should instruct his agents, or his surveyors, to investigate such details as the buyer desires validated. This vessel is offered subject to prior sale, price change, or withdrawal without notice.

Exclusions

Owner's personal belongings.

Disclaimer

The Company offers the details of this vessel or yacht in good faith but cannot guarantee or warrant the accuracy of this information nor warrant the condition of the vessel. A buyer should instruct his representatives, agents, or his surveyors, to investigate such details as the buyer desires validated. This vessel or yacht is offered subject to prior sale, price change, or withdrawal without notice.

PHOTOS

1 Port Main



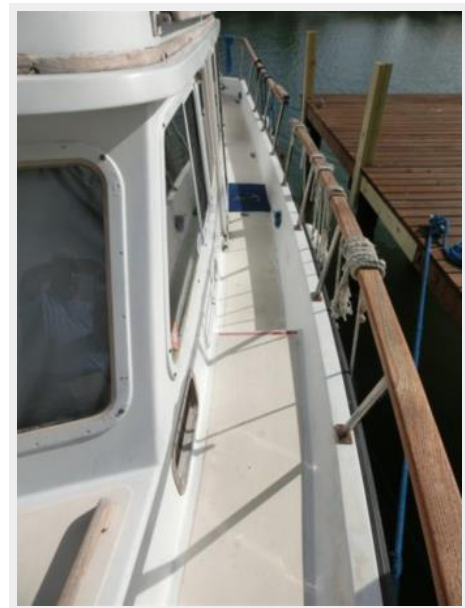
2 Starboard 2



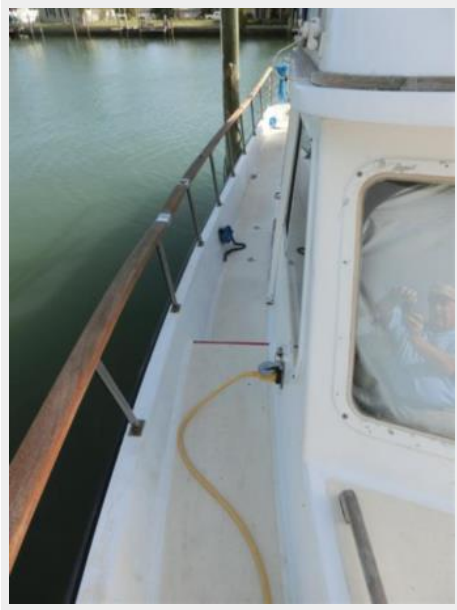
3 Starboard Deck Door



4 Port Side Decks



5 Starboard Side Decks



6 Forward Hatch



7 FlyBridge



8 Flybridge 2



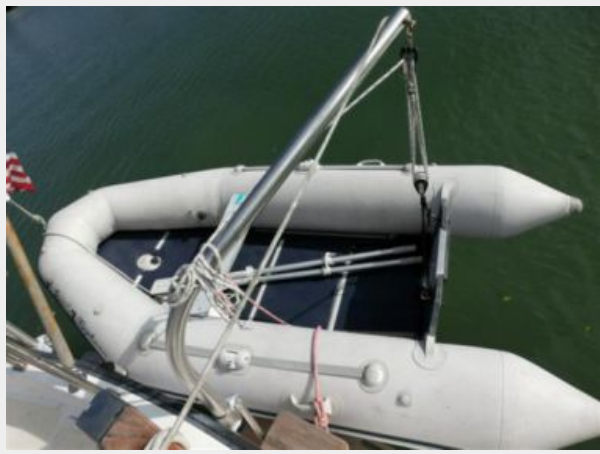
9 Aft Deck 2



10 Davits



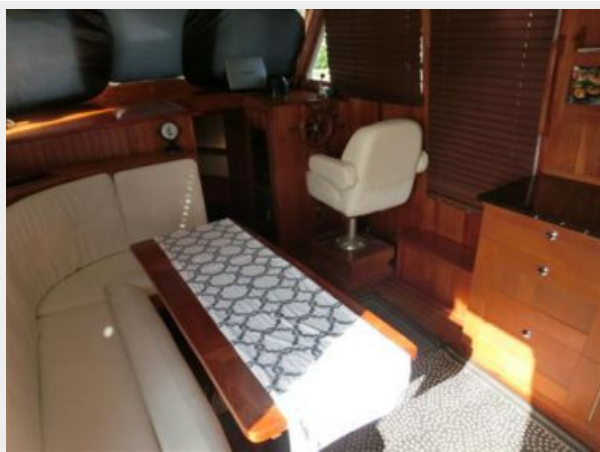
11 Dingy



12 Honda 2.3 Motor



13 Salon 2



14 Salon Settee



15 Lower Helm



16 Custom Galley



17 Galley 2



18 Master Suite



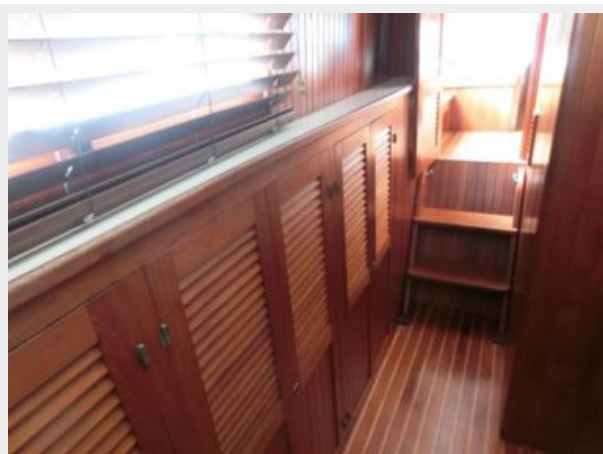
19 Centerline Queen



20 Master Storage



21 Master Storage 2



22 Custom Aft Stateroom



23 Master Head



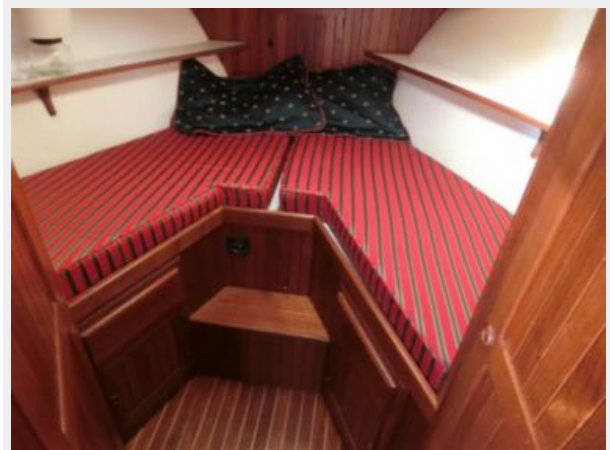
24 Master Separate Shower



25 Forward Hanging Locker



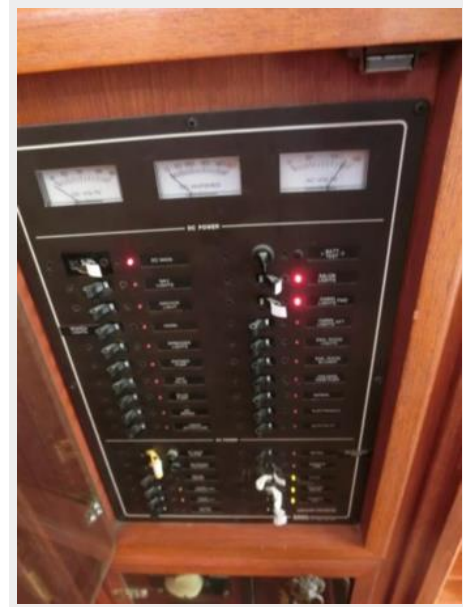
26 V-berth



27 Guest Head



28 Electric Panel



29 Aft Deck



30 Bow Pulpit



31 Maxwell Windlass



32 Maxwell Windlass Controls



33 Vetus Bow Thruster



34 Garmin GPSMAP 5212



35 Engine



37 Engine 2



38 Genset



39 Xantrex Freedom SW



40 Battery Bank



41 Starboard Main



42 Starboard Bow



43 Port Main2



44 Documentation #



45 Name Plate



CONTACTS

Andrey Shestakov, leading yacht broker of the sales department of Shestakov Yacht Sales Inc. Shestakov Yacht Sales Inc., the official representative of the Miami/Fort Lauderdale FL headquarters.

Contact details

Email: **andrey@shestakovyachtsales.com**

Web: shestakovyachtsales.com/en/

Telephones

USA: **+1(954)274-4435**

Office hours

Monday – Saturday: **9:00 - 21:00 EDT**

Sunday: **closed**

Address



Harbour Towne Marina, 850 NE 3rd St,
STE 213, Dania, FL 33004