

MARY SUNSHINE — HINCKLEY



Builder: HINCKLEY

Year Built: 1984

Model: Center Cockpit

Price: PRICE ON APPLICATION

Location: Puerto Rico

LOA: 59' 3" (18.06m)

Beam: 15' 6" (4.72m)

Min Draft: 6' 6" (1.98m)

Max Draft: 0' 0" (0.00m)

Cruise Speed: 8 Kts. (9 MPH)

Max Speed: 10 Kts. (12 MPH)

Our experienced yacht broker, Andrey Shestakov, will help you choose and buy a yacht that best suits your needs **MARY SUNSHINE — HINCKLEY** from our catalogue. Presently, at Shestakov Yacht Sales Inc., we have a wide variety of yachts available on our sale's list. We also work in close contact with all the big yacht manufacturers from all over the world.

If you would like to buy a yacht **MARY SUNSHINE — HINCKLEY** or would like help answering any questions concerning purchasing, selling or chartering a yacht, please call **+1(954)274-4435**

TABLE OF CONTENTS

TABLE OF CONTENTS	2
SPECIFICATIONS	5
Overview	5
Basic Information	5
Dimensions	5
Speed, Capacities and Weight	5
Accommodations	6
Hull and Deck Information	6
Engine Information	6
DETAILED INFORMATION	7
REMARKS	7
ACCOMMODATIONS AND LAYOUT	7
HULL AND CONSTRUCTION	8
ELECTRONICS AND NAVIGATION EQUIPMENT	8
ELECTRICAL SYSTEM	8
ENGINE AND MECHANICAL EQUIPMENT	8
SAILS AND RIGGING	9
GROUND TACKLE/ DECK EQUIPMENT	9
SAFETY EQUIPMENT	10
RECENT REFIT HIGHLIGHTS	10
EXCLUSIONS	11
DISCLAIMER	11
Exclusions	11
Disclaimer	11
PHOTOS	12
Under Sail	12
Salon Stbd. Side	12
Chart Table	12

Nav Station	12
DC Electrical Panel	13
AC Electrical Panel	13
Companionway	13
Looking Aft to Galley	13
Aft Stateroom Stbd. Side	14
Galley	14
Aft Stateroom Port Side	14
Aft Head	14
Port Guest Stateroom	15
Fwd. Head/Shower	15
Starboard Guest Stateroom	15
Deck	15
Looking Forward	16
Looking Aft	16
Chart Plotter Pod	16
Cockpit Instruments	16
Cockpit Table	16
Power Winches	16
Bow Thruster Controls	17
Aft Deck	17
Aft Deck	17
Kato Davits	17
Under Sail	18
Stbd. Profile	18
MarySunshine_Engine_Rebuilt_2015	18
Centerboard	18
CONTACTS	19
Contact details	19

Telephones	19
Office hours	19
Address	19

SPECIFICATIONS

Overview

MARY SUNSHINE is a custom Hinckley 59 sloop set up for easy short-handed sailing with her electric in-mast furling main sail and power-driven primary winches. She has a comfortable three stateroom, two head layout beautifully finished in teak with mahogany accents. She offers plenty of storage for gear, supplies, and personal items both above and below deck making her a great liveaboard cruising yacht. Her centerboard keel design is perfect for island exploring. Her tankage allows ocean crossings. Safe, fast, stiff and weatherly, the Hinckley 59 is a great performing, easily driven, heavy displacement unlimited bluewater cruising yacht of the highest quality.

MARY SUNSHINE's owners have used the boat for their retirement cruise. They have sailed her from New England to the Caribbean, then to the Mediterranean and back to the Caribbean.

Basic Information

Category: Center Cockpit

Sub Category: Cutter

Model Year: 1983

Year Built: 1984

Country: Puerto Rico

Vessel Top: Dodger

Dimensions

LOA: 59' 3" (18.06m)

LWL: 44' 2" (13.46m)

Beam: 15' 6" (4.72m)

Min Draft: 6' 6" (1.98m)

Max Draft: 0' 0" (0.00m)

Speed, Capacities and Weight

Cruise Speed: 8 Kts. (9 MPH)

Max Speed: 10 Kts. (12 MPH)

Displacement: 69000 Pounds

Water Capacity: 450 Gallons

Fuel Capacity: 300 Gallons

Accommodations

Total Cabins: 3

Total Heads: 2

Hull and Deck Information

Hull Material: Fiberglass

Deck Material: Fiberglass

Hull Configuration: Centerboard

Hull Color: DARK BLUE

Hull Finish: Fiberglass

Hull Designer: McCurdy & Rhodes

Engine Information

Engines: 1

Manufacturer: Perkins Diesel

DETAILED INFORMATION

REMARKS

MARY SUNSHINE is a custom Hinckley 59 sloop set up for easy short-handed sailing with her electric in-mast furling main sail and power-driven primary winches. She has a comfortable three stateroom, two head layout beautifully finished in teak with mahogany accents. She offers plenty of storage for gear, supplies, and personal items both above and below deck making her a great liveaboard cruising yacht. Her keel design is perfect for island exploring. Her tankage allows ocean crossings. Safe, fast, stiff and weatherly, the Hinckley 59 is a great performing, easily driven, heavy displacement unlimited bluewater cruising yacht of the highest quality.

MARY SUNSHINE's owners have used the boat for their retirement cruise. They have sailed her from New England to the Caribbean, then to the Mediterranean and back to the Caribbean.

ACCOMMODATIONS AND LAYOUT

Beginning forward and aft of the large sail locker/forepeak is a head and separate stall shower shared by the two identical port and starboard staterooms. These staterooms have upper and lower berths, hanging lockers, bureaus, and several drawers and storage lockers. The spacious, full-width main salon follows, with a large settee/dinette off-center to port that seats up to eight. To starboard is a full-length settee with lockers and entertainment area behind and drawers and lockers under.

The galley is aft of the salon to port, with the companionway on center and the navigation station to starboard. Along a passageway aft to starboard is access to the standing engine room and work station.

The master cabin is aft with two spacious berths port and starboard, a centerline bureau, two hanging lockers and numerous drawers and lockers. A head and separate shower is forward of the stateroom to port.

Galley

- SeaFrost 12v top-loading freezer and refrigerator units, installed by Ocean Options (NEW, 2013)
- 3-Burner LP gas stove with oven and broiler
- Deep stainless steel sink
- Microwave oven (2018)
- Set of pots and pans, new silverware, kitchen utensils, serving dishes (NEW, 2013)
- Built-in trash bin

HULL AND CONSTRUCTION

Built to the highest of standards that Hinckley has become known for worldwide. Hand-laid fiberglass hull with Airexcore. Non-integral fiberglass fuel and water tanks. External lead ballast keel. Skeg-mounted rudder. Fiberglass centerboard with bronze leading edge (with wind forward of the beam allows improved pointing into the wind and dramatically decreases leeway). All this equals a true shoaling keel perfect for island exploring and contributes to her stiff and weatherly performance at sea. Fiberglass deck with molded non-skid surface bonded onto 7-1/2" recessed hull flange and thru-bolted on 8" centers.

Hull is Awlgrippled Dark Blue. Flat deck surfaces are White Gel coat. Non-skid surfaces are Cloud Grey Gel coat. Bottom painted red (Micron 66) with new Awlcraft boot stripe (May 2018). Centerboard configuration offers a draft of 6'-6" and a maximum draft of 12'-6" with board down.

ELECTRONICS AND NAVIGATION EQUIPMENT

- Raymarine E120 chartplotter/radar at nav station
- Raymarine E80 chartplotter/radar in cockpit
- Raymarine autopilot
- Raymarine AIS
- Global Fix Pro 406 EPIRB
- Iridium Go satellite phone/weather/communication
- (6) Autohelm cockpit instruments: speed/depth/wind/VMG/GPS compass & nav data
- Flat screen TV
- DVD and stereo system allows streaming/Wi-Fi connection

ELECTRICAL SYSTEM

- 12v and 24V DC systems (7 Lifeline AGM batteries new 2014)
- 110v 60H AC systems for (1) 50 amp or (2) 30 amp connectors
- 230V 50H (European) system with transformer (2016)
- Charge off separate engine-driven alternators or through the battery charger
- 10kW Westerbeke (NEW 2010) generator, approx. 1,000 hours (May 2018)
- Mastervolt inverter charger 2500 inverter/100 amp charger (2016)
- Custom Hinckley electric circuit breaker panels (one AC and one DC)

ENGINE AND MECHANICAL EQUIPMENT

- Engine: Perkins, 135 hp, 6.354 (extensive rebuild by Hansen Marine 2015)
- Borg Warner Velvet Drive transmission (rebuilt by Hansen Marine 2015)
- Nielson anchor windlass

- 4-Blade Max-Prop 24 auto-feathering propeller (2016)
- (2) Marine Air systems 110v reverse cycle heating and air conditioning units, installed by Ocean Options (2013)
- Sea Recovery Aqua Matic 900-2 water maker with 39 gph capacity, installed by Ocean Options (2013)

SAILS AND RIGGING

- Hood Electric Stoway aluminum mast and boom (Disassembled, inspected, and Awlgrip painted, 2008), Hood gearbox (rebuilt, 2016), new luff rod (2015)
- Hood Seafurl roller furling headstay (refurbished, 2008)
- Inner staysail forestay with quick release
- Navtec hydraulic backstay (rebuilt 2015) and boom vang (rebuilt, 2008)
- Aluminum spinnaker pole stored on mast
- Standing rigging (inspected, replaced as necessary, 2015)

Sails by North Sails

- Main (2016)
- 105% Genoa (Doyle) (2013)
- 135% Genoa (2009)
- MPS (Gennaker) w/sock (2009)
- Steadying sail (Doyle) (2013)
- Other misc. sails of various vintages

Winches (All Barient)

- (2) #36 ST 2-speed electric primaries
- (2) #36 ST 2-speed secondaries
- #27 ST main sheet
- #23 ST outhaul
- #27 ST halyard
- #24 Halyard

GROUND TACKLE/ DECK EQUIPMENT

- 65# Manson CQR anchor (2016) with 400' chain (2013)
- 35# Danforth anchor with chain and line rode
- 85# Storm anchor
- Saltwater anchor washdown
- Fresh water deck washdown
- Custom built stainless steel/teak swim ladder (2016)
- Dodger (Doyle) (2013)

- Foredeck awning and boom tent (North Portland) (2013)
- Complete set of Sunbrella protective covers for varnished surfaces on deck (2013)

SAFETY EQUIPMENT

- Lifesling
- EPIRB
- USCG safety equipment
- 6-Man life raft, mounted on aft deck (certified, 2016)

RECENT REFIT HIGHLIGHTS

Refit 2012-2013:

- Westerbeke 10 KVA generator
- Seafrust refrigerator and freezer compressors
- Marine Air midship and aft/fwd. air conditioners
- Sea Recovery reverse-osmosis water purification system, 38 GPH

Refit 2014-2018 (\$250K restoration and improvements, not maintenance, documented with receipts)

- Kato heavy duty davits
- AB 10.5 dinghy and 15 hp Honda outboard
- Raritan electroflush heads forward and aft with all new black water hoses, pumps and holding tank with MSD
- Side Power 15 hp 24V bow thrusters with enlarged propellers/shaft and cockpit foot controls
- Mastervolt 2500W inverter with 100amp charger, custom transformer for European power 230V/50H conversion to 120V/60H for boat use
- Rebuilt Perkins 6.354.4M main engine and Borg Warner Velvet Drive transmission
- 4-Blade Max-Prop 24 auto-feathering propeller
- Refinished (stripped and re-varnished) all deck teaks
- New North Sails mainsail
- Batteries isolator
- New Lifeline batteries (7)
- New lifelines (not plastic coated)
- Rebuilt Hood main furling gearbox
- New luff rod for main
- Various running and standing rigging replacements
- New Manson CQR anchor
- New cutlass bearings
- Rebuilt Navtec hydraulic backstay

- New SMC aft cabin double berth mattresses
- Sirius SR150 satellite weather, North America system added
- Ralph Lauren embroidered curtains for saloon and midship cabins
- New cushions for saloon settees
- New comforters for aft cabin berths
- New curtains for aft head
- New Iridium Go satellite communication/weather worldwide system
- New Awlcraft boot stripe

EXCLUSIONS

The owner's personal effects and tools are excluded from the sale.

DISCLAIMER

KVH satellite TV and SeaTel satellite communication have never been used by the current owner and have not been evaluated. Though still in place, these systems have been upgraded/replaced with Iridium Go for improved satellite/weather/communication worldwide and with flat-screen TV, new stereo and DVD.

Exclusions

Owner's personal belongings.

Disclaimer

The Company offers the details of this vessel or yacht in good faith but cannot guarantee or warrant the accuracy of this information nor warrant the condition of the vessel. A buyer should instruct his representatives, agents, or his surveyors, to investigate such details as the buyer desires validated. This vessel or yacht is offered subject to prior sale, price change, or withdrawal without notice.

PHOTOS

Under Sail



Salon Stbd. Side



Nav Station



Chart Table



DC Electrical Panel



AC Electrical Panel



Companionway



Looking Aft to Galley



Galley



Aft Stateroom Stbd. Side



Aft Stateroom Port Side



Aft Head



Port Guest Stateroom



Fwd. Head/Shower



Starboard Guest Stateroom



Deck



Looking Forward



Looking Aft



Chart Plotter Pod



Cockpit Instruments



Cockpit Table



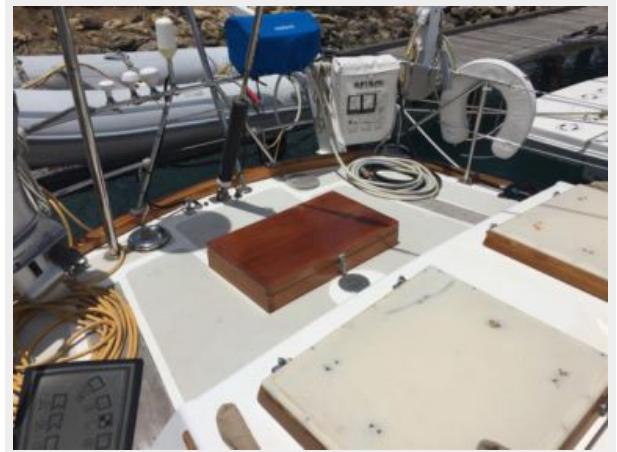
Power Winches



Bow Thruster Controls



Aft Deck



Aft Deck



Kato Davits



Under Sail



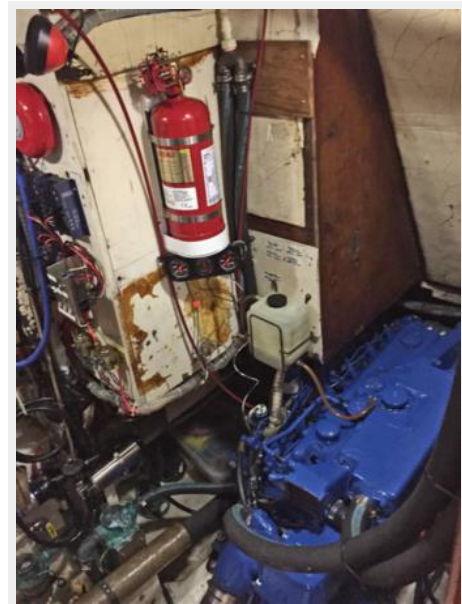
Stbd. Profile



Centerboard



MarySunshine_Engine_Rebuilt_2015



CONTACTS

Andrey Shestakov, leading yacht broker of the sales department of Shestakov Yacht Sales Inc. Shestakov Yacht Sales Inc., the official representative of the Miami/Fort Lauderdale FL headquarters.

Contact details

Email: andrey@shestakovyachtsales.com

Web: shestakovyachtsales.com/en/

Telephones

USA: +1(954)274-4435

Office hours

Monday – Saturday: **9:00 - 21:00** EDT

Sunday: **closed**

Address



Harbour Towne Marina, 850 NE 3rd St,
STE 213, Dania, FL 33004