

## MARY SUNSHINE — HINCKLEY



**Судостроитель:** HINCKLEY

**Год постройки:** 1984

**Модель:** Center Cockpit

**Цена:** **ЦЕНА ЯХТЫ ПО ЗАПРОСУ**

**Местонахождение:** Puerto Rico

**Длина общая:** 59' 3" (18.06m)

**Ширина:** 15' 6" (4.72m)

**Мин. осадка:** 6' 6" (1.98m)

**Макс. осадка:** 0' 0" (0.00m)

**Крейс. скорость:** 8 Kts. (9 MPH)

**Макс. скорость:** 10 Kts. (12 MPH)

Купить **MARY SUNSHINE — HINCKLEY** а также выбрать подходящую вам яхту из нашего каталога яхт вам поможет опытный яхтенный брокер Андрей Шестаков. На сегодняшний день компания **Shestakov Yacht Sales Inc.** имеет большое количество яхт в собственном списке продаж, а также тесно сотрудничает со всеми крупными яхтенными производителями по всему миру.

Для того чтобы купить яхту **MARY SUNSHINE — HINCKLEY** а также проконсультироваться по любому вопросу связанному с покупкой, продажей, чартером яхт позвоните по телефону **+7(918)465-66-44**.

# ОГЛАВЛЕНИЕ

|                                      |    |
|--------------------------------------|----|
| ОГЛАВЛЕНИЕ                           | 2  |
| ХАРАКТЕРИСТИКИ                       | 5  |
| Обзор                                | 5  |
| Основная информация                  | 5  |
| Размеры                              | 5  |
| Скорость, вместимость и масса        | 5  |
| Размещение                           | 6  |
| Корпус и палуба                      | 6  |
| Информация о двигателе               | 6  |
| ПОДРОБНОЕ ОПИСАНИЕ                   | 7  |
| REMARKS                              | 7  |
| ACCOMMODATIONS AND LAYOUT            | 7  |
| HULL AND CONSTRUCTION                | 8  |
| ELECTRONICS AND NAVIGATION EQUIPMENT | 8  |
| ELECTRICAL SYSTEM                    | 8  |
| ENGINE AND MECHANICAL EQUIPMENT      | 8  |
| SAILS AND RIGGING                    | 9  |
| GROUND TACKLE/ DECK EQUIPMENT        | 9  |
| SAFETY EQUIPMENT                     | 10 |
| RECENT REFIT HIGHLIGHTS              | 10 |
| EXCLUSIONS                           | 11 |
| DISCLAIMER                           | 11 |
| Исключения                           | 11 |
| Отказ от ответственности             | 11 |
| ФОТОГРАФИИ                           | 12 |
| Under Sail                           | 12 |
| Salon Stbd. Side                     | 12 |
| Chart Table                          | 12 |

---

|                                  |           |
|----------------------------------|-----------|
| Nav Station                      | 12        |
| DC Electrical Panel              | 13        |
| AC Electrical Panel              | 13        |
| Companionway                     | 13        |
| Looking Aft to Galley            | 13        |
| Aft Stateroom Stbd. Side         | 14        |
| Galley                           | 14        |
| Aft Stateroom Port Side          | 14        |
| Aft Head                         | 14        |
| Port Guest Stateroom             | 15        |
| Fwd. Head/Shower                 | 15        |
| Starboard Guest Stateroom        | 15        |
| Deck                             | 15        |
| Looking Forward                  | 16        |
| Looking Aft                      | 16        |
| Chart Plotter Pod                | 16        |
| Cockpit Instruments              | 16        |
| Cockpit Table                    | 16        |
| Power Winches                    | 16        |
| Bow Thruster Controls            | 17        |
| Aft Deck                         | 17        |
| Aft Deck                         | 17        |
| Kato Davits                      | 17        |
| Under Sail                       | 18        |
| Stbd. Profile                    | 18        |
| MarySunshine_Engine_Rebuilt_2015 | 18        |
| Centerboard                      | 18        |
| <b>КОНТАКТЫ</b>                  | <b>19</b> |
| Контактная информация            | 19        |

---

---

|              |    |
|--------------|----|
| Телефоны     | 19 |
| Время работы | 19 |
| Адрес        | 19 |

# ХАРАКТЕРИСТИКИ

## Обзор

MARY SUNSHINE is a custom Hinckley 59 sloop set up for easy short-handed sailing with her electric in-mast furling main sail and power-driven primary winches. She has a comfortable three stateroom, two head layout beautifully finished in teak with mahogany accents. She offers plenty of storage for gear, supplies, and personal items both above and below deck making her a great liveaboard cruising yacht. Her centerboard keel design is perfect for island exploring. Her tankage allows ocean crossings. Safe, fast, stiff and weatherly, the Hinckley 59 is a great performing, easily driven, heavy displacement unlimited bluewater cruising yacht of the highest quality.

MARY SUNSHINE's owners have used the boat for their retirement cruise. They have sailed her from New England to the Caribbean, then to the Mediterranean and back to the Caribbean.

## Основная информация

**Тип судна:** Center Cockpit

**Подкатегория:** Cutter

**Модельный год:** 1983

**Год постройки:** 1984

**Страна:** Puerto Rico

**Верх:** Dodger

## Размеры

**Длина общая:** 59' 3" (18.06m)

**Длина по ватерлинии:** 44' 2" (13.46m)

**Ширина:** 15' 6" (4.72m)

**Мин. осадка:** 6' 6" (1.98m)

**Макс. осадка:** 0' 0" (0.00m)

## Скорость, вместимость и масса

**Крейс. скорость:** 8 Kts. (9 MPH)

**Макс. скорость:** 10 Kts. (12 MPH)

**Водоизмещение:** 69000 Pounds

**Вместимость воды:** 450 Gallons

**Объем топливного бака:** 300 Gallons

---

## Размещение

---

Всего кают: 3

Всего ком. состава: 2

---

## Корпус и палуба

---

Материал корпуса: Fiberglass

Материал палубы: Fiberglass

Комплектация корпуса: Centerboard

Цвет корпуса: DARK BLUE

Отделка корпуса: Fiberglass

Дизайнер корпуса: McCurdy & Rhodes

---

## Информация о двигателе

---

Двигатели: 1

Производитель: Perkins Diesel

---

# ПОДРОБНОЕ ОПИСАНИЕ

---

## REMARKS

---

MARY SUNSHINE is a custom Hinckley 59 sloop set up for easy short-handed sailing with her electric in-mast furling main sail and power-driven primary winches. She has a comfortable three stateroom, two head layout beautifully finished in teak with mahogany accents. She offers plenty of storage for gear, supplies, and personal items both above and below deck making her a great liveaboard cruising yacht. Her keel design is perfect for island exploring. Her tankage allows ocean crossings. Safe, fast, stiff and weatherly, the Hinckley 59 is a great performing, easily driven, heavy displacement unlimited bluewater cruising yacht of the highest quality.

MARY SUNSHINE's owners have used the boat for their retirement cruise. They have sailed her from New England to the Caribbean, then to the Mediterranean and back to the Caribbean.

## ACCOMMODATIONS AND LAYOUT

---

Beginning forward and aft of the large sail locker/forepeak is a head and separate stall shower shared by the two identical port and starboard staterooms. These staterooms have upper and lower berths, hanging lockers, bureaus, and several drawers and storage lockers. The spacious, full-width main salon follows, with a large settee/dinette off-center to port that seats up to eight. To starboard is a full-length settee with lockers and entertainment area behind and drawers and lockers under.

The galley is aft of the salon to port, with the companionway on center and the navigation station to starboard. Along a passageway aft to starboard is access to the standing engine room and work station.

The master cabin is aft with two spacious berths port and starboard, a centerline bureau, two hanging lockers and numerous drawers and lockers. A head and separate shower is forward of the stateroom to port.

### Galley

- SeaFrost 12v top-loading freezer and refrigerator units, installed by Ocean Options (NEW, 2013)
- 3-Burner LP gas stove with oven and broiler
- Deep stainless steel sink
- Microwave oven (2018)
- Set of pots and pans, new silverware, kitchen utensils, serving dishes (NEW, 2013)
- Built-in trash bin

---

## HULL AND CONSTRUCTION

---

Built to the highest of standards that Hinckley has become known for worldwide. Hand-laid fiberglass hull with Airexcore. Non-integral fiberglass fuel and water tanks. External lead ballast keel. Skeg-mounted rudder. Fiberglass centerboard with bronze leading edge (with wind forward of the beam allows improved pointing into the wind and dramatically decreases leeway). All this equals a true shoaling keel perfect for island exploring and contributes to her stiff and weatherly performance at sea. Fiberglass deck with molded non-skid surface bonded onto 7-1/2" recessed hull flange and thru-bolted on 8" centers.

Hull is Awlgrippped Dark Blue. Flat deck surfaces are White Gel coat. Non-skid surfaces are Cloud Grey Gel coat. Bottom painted red (Micron 66) with new Awlcraft boot stripe (May 2018). Centerboard configuration offers a draft of 6'-6" and a maximum draft of 12'-6" with board down.

---

## ELECTRONICS AND NAVIGATION EQUIPMENT

---

- Raymarine E120 chartplotter/radar at nav station
- Raymarine E80 chartplotter/radar in cockpit
- Raymarine autopilot
- Raymarine AIS
- Global Fix Pro 406 EPIRB
- Iridium Go satellite phone/weather/communication
- (6) Autohelm cockpit instruments: speed/depth/wind/VMG/GPS compass & nav data
- Flat screen TV
- DVD and stereo system allows streaming/Wi-Fi connection

---

## ELECTRICAL SYSTEM

---

- 12v and 24V DC systems (7 Lifeline AGM batteries new 2014)
- 110v 60H AC systems for (1) 50 amp or (2) 30 amp connectors
- 230V 50H (European) system with transformer (2016)
- Charge off separate engine-driven alternators or through the battery charger
- 10kW Westerbeke (NEW 2010) generator, approx. 1,000 hours (May 2018)
- Mastervolt inverter charger 2500 inverter/100 amp charger (2016)
- Custom Hinckley electric circuit breaker panels (one AC and one DC)

---

## ENGINE AND MECHANICAL EQUIPMENT

---

- Engine: Perkins, 135 hp, 6.354 (extensive rebuild by Hansen Marine 2015)
- Borg Warner Velvet Drive transmission (rebuilt by Hansen Marine 2015)
- Nielson anchor windlass



- 4-Blade Max-Prop 24 auto-feathering propeller (2016)
- (2) Marine Air systems 110v reverse cycle heating and air conditioning units, installed by Ocean Options (2013)
- Sea Recovery Aqua Matic 900-2 water maker with 39 gph capacity, installed by Ocean Options (2013)

---

## SAILS AND RIGGING

---

- Hood Electric Stoway aluminum mast and boom (Disassembled, inspected, and Awlgrip painted, 2008), Hood gearbox (rebuilt, 2016), new luff rod (2015)
- Hood Seafurl roller furling headstay (refurbished, 2008)
- Inner staysail forestay with quick release
- Navtec hydraulic backstay (rebuilt 2015) and boom vang (rebuilt, 2008)
- Aluminum spinnaker pole stored on mast
- Standing rigging (inspected, replaced as necessary, 2015)

### Sails by North Sails

- Main (2016)
- 105% Genoa (Doyle) (2013)
- 135% Genoa (2009)
- MPS (Gennaker) w/sock (2009)
- Steadying sail (Doyle) (2013)
- Other misc. sails of various vintages

### Winches (All Barient)

- (2) #36 ST 2-speed electric primaries
- (2) #36 ST 2-speed secondaries
- #27 ST main sheet
- #23 ST outhaul
- #27 ST halyard
- #24 Halyard

---

## GROUND TACKLE/ DECK EQUIPMENT

---

- 65# Manson CQR anchor (2016) with 400' chain (2013)
- 35# Danforth anchor with chain and line rode
- 85# Storm anchor
- Saltwater anchor washdown
- Fresh water deck washdown
- Custom built stainless steel/teak swim ladder (2016)
- Dodger (Doyle) (2013)

- Foredeck awning and boom tent (North Portland) (2013)
- Complete set of Sunbrella protective covers for varnished surfaces on deck (2013)

## SAFETY EQUIPMENT

---

- Lifesling
- EPIRB
- USCG safety equipment
- 6-Man life raft, mounted on aft deck (certified, 2016)

## RECENT REFIT HIGHLIGHTS

---

Refit 2012-2013:

- Westerbeke 10 KVA generator
- Seafrust refrigerator and freezer compressors
- Marine Air midship and aft/fwd. air conditioners
- Sea Recovery reverse-osmosis water purification system, 38 GPH

Refit 2014-2018 (\$250K restoration and improvements, not maintenance, documented with receipts)

- Kato heavy duty davits
- AB 10.5 dinghy and 15 hp Honda outboard
- Raritan electroflush heads forward and aft with all new black water hoses, pumps and holding tank with MSD
- Side Power 15 hp 24V bow thrusters with enlarged propellers/shaft and cockpit foot controls
- Mastervolt 2500W inverter with 100amp charger, custom transformer for European power 230V/50H conversion to 120V/60H for boat use
- Rebuilt Perkins 6.354.4M main engine and Borg Warner Velvet Drive transmission
- 4-Blade Max-Prop 24 auto-feathering propeller
- Refinished (stripped and re-varnished) all deck teaks
- New North Sails mainsail
- Batteries isolator
- New Lifeline batteries (7)
- New lifelines (not plastic coated)
- Rebuilt Hood main furling gearbox
- New luff rod for main
- Various running and standing rigging replacements
- New Manson CQR anchor
- New cutlass bearings
- Rebuilt Navtec hydraulic backstay

- New SMC aft cabin double berth mattresses
- Sirius SR150 satellite weather, North America system added
- Ralph Lauren embroidered curtains for saloon and midship cabins
- New cushions for saloon settees
- New comforters for aft cabin berths
- New curtains for aft head
- New Iridium Go satellite communication/weather worldwide system
- New Awlcraft boot stripe

---

## EXCLUSIONS

---

The owner's personal effects and tools are excluded from the sale.

---

## DISCLAIMER

---

KVH satellite TV and SeaTel satellite communication have never been used by the current owner and have not been evaluated. Though still in place, these systems have been upgraded/replaced with Iridium Go for improved satellite/weather/communication worldwide and with flat-screen TV, new stereo and DVD.

---

## Исключения

---

При продаже яхты исключаются личные вещи владельца.

---

## Отказ от ответственности

---

Компания предоставляет описание судна или яхты добросовестно, но не может гарантировать точность этой информации, а также не ручается за техническое состояние. Покупатель должен проинструктировать своих агентов или оценщиков исследовать представленную информацию более подробно, по собственному желанию. Продажа судна или яхты, изменение цены или снятие с продажи будет происходить без предварительного уведомления.

# ФОТОГРАФИИ

**Under Sail**



**Salon Stbd. Side**



**Chart Table**



**Nav Station**



**DC Electrical Panel**



**AC Electrical Panel**



**Companionway**



**Looking Aft to Galley**



**Galley**



**Aft Stateroom Stbd. Side**



**Aft Stateroom Port Side**



**Aft Head**



**Port Guest Stateroom**



**Fwd. Head/Shower**



**Starboard Guest Stateroom**



**Deck**



**Looking Forward**



**Looking Aft**



**Chart Plotter Pod**



**Cockpit Instruments**



**Cockpit Table**



**Power Winches**





### Bow Thruster Controls



### Aft Deck



### Aft Deck



### Kato Davits



**Under Sail**

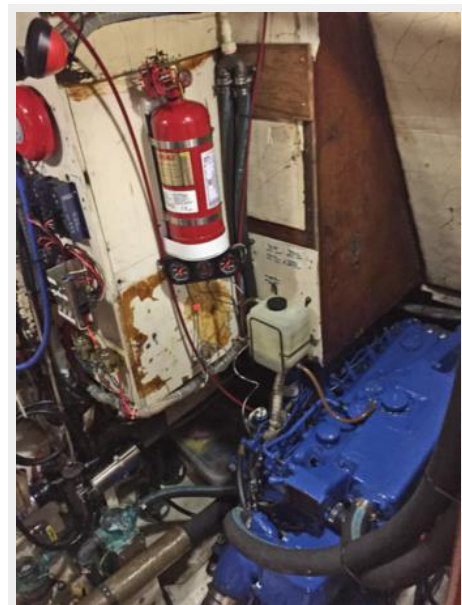


**Stbd. Profile**



**MarySunshine\_Engine\_Rebuilt\_2015**

**Centerboard**



# КОНТАКТЫ

---

Андрей Шестаков (Andrey Shestakov) – ведущий яхтенный брокер отдела продаж яхт и судов компании Shestakov Yacht Sales Inc. Официальный представитель Shestakov Yacht Sales Inc. для русскоговорящих клиентов в центральном офисе компании в Майами/Форт Лодердейл/Флорида/США.

## Контактная информация

---

Email: [andrey@shestakovyachtsales.com](mailto:andrey@shestakovyachtsales.com)

Web: [shestakovyachtsales.com](http://shestakovyachtsales.com)

## Телефоны

---

Краснодарский край: **+7(918)465-66-44**

США, Майами, Флорида: **+1(954)274-4435**

## Время работы

---

Понедельник – Суббота: **9:00 - 21:00**  
EDT

Воскресенье: **Закрето**

## Адрес

---



Harbour Towne Marina, 850 NE 3rd St,  
STE 213, Dania, FL 33004