

MOON BEAM — GREAT HARBOR



Судостроитель: GREAT HARBOR

Год постройки: 2007

Модель: Trawler Yacht

Цена: ЦЕНА ЯХТЫ ПО ЗАПРОСУ

Местонахождение: United States

Длина общая: 37' 0" (11.28m)

Ширина: 16' 0" (4.88m)

Макс. осадка: 3' 0" (0.91m)

Купить Moon Beam — GREAT HARBOR а также выбрать подходящую вам яхту из нашего каталога яхт вам поможет опытный яхтенный брокер Андрей Шестаков. На сегодняшний день компания Shestakov Yacht Sales Inc. имеет большое количество яхт в собственном списке продаж, а также тесно сотрудничает со всеми крупными яхтенными производителями по всему миру.

Для того чтобы купить яхту Moon Beam — GREAT HARBOR а также проконсультироваться по любому вопросу связанному с покупкой, продажей, чартером яхт позвоните по телефону **+7(918)465-66-44**.

ОГЛАВЛЕНИЕ

| | |
|---|----|
| ОГЛАВЛЕНИЕ | 2 |
| ХАРАКТЕРИСТИКИ | 7 |
| Обзор | 7 |
| Основная информация | 7 |
| Размеры | 7 |
| Скорость, вместимость и масса | 7 |
| Размещение | 7 |
| Корпус и палуба | 8 |
| Информация о двигателе | 8 |
| ПОДРОБНОЕ ОПИСАНИЕ | 9 |
| MAIN DESCRIPTION | 9 |
| GREAT HARBOUR N37 WALKTHROUGH | 9 |
| GREAT HARBOUR N37 ACCOMMODATIONS | 9 |
| GREAT HARBOUR N37 SALON AND HELM | 9 |
| GREAT HARBOUR N37 GALLEY | 10 |
| GREAT HARBOUR N37 MASTER STATEROOM | 10 |
| GREAT HARBOUR N37 GUEST STATEROOM | 10 |
| GREAT HARBOUR N37 HEAD | 11 |
| GREAT HARBOUR N37 BOSUN'S LOCKER | 11 |
| GREAT HARBOUR N37 DECK EQUIPMENT | 11 |
| GREAT HARBOUR N37 ELECTRONICS | 11 |
| GREAT HARBOUR N37 ELECTRICAL | 12 |
| GREAT HARBOUR N37 AUDIO/VISUAL | 12 |
| GREAT HARBOUR N37 ENGINE/MECHANICAL | 12 |
| GREAT HARBOUR N37 TENDER | 12 |
| GREAT HARBOUR N37 FIRE AND SAFETY EQUIPMENT | 12 |
| GREAT HARBOUR N37 EXCLUSIONS | 12 |
| GREAT HARBOUR N37 CO-BROKERAGE COMMISSION SPLIT | 12 |

| | |
|-------------------------------|----|
| DISCLAIMER | 13 |
| Исключения | 13 |
| Отказ от ответственности | 13 |
| ФОТОГРАФИИ | 14 |
| 09 moon beam anchored-cropped | 14 |
| 15 20191021_121315 | 14 |
| 16 to strbd bow | 14 |
| 17 strbd wide | 14 |
| 18 nav37_plans-edited1-jpg | 14 |
| 17z 20191021_123802 | 14 |
| 19 aft cockpit 2 | 15 |
| 19 aft cockpit 3 | 15 |
| 19 bow pulpit | 15 |
| 19 deck from bow pulpit | 15 |
| 19 port side to bow | 15 |
| 19 port side to stern | 15 |
| 19 roof to bow | 16 |
| 19 roof - solar | 16 |
| 19 starbd side to stern | 16 |
| 19 starbd to bow | 16 |
| 19 swim platform 2 | 17 |
| 19 swim platform | 17 |
| 19z at dock 2 | 17 |
| 20 1aft cockpit | 17 |
| 20 20191021_121029 | 17 |
| 20 20191021_121106 | 17 |
| 20 20191021_121238 | 18 |
| 20 20191021_121327 | 18 |
| 25 20191021_124402 | 18 |

| | |
|------------------------------|----|
| 25 20191021_124526 | 18 |
| 25 20191021_124628 | 18 |
| 25 20191021_124710 | 18 |
| 25 20191021_124938 | 19 |
| 25 20191021_124755 | 19 |
| 25 20191021_125001 | 19 |
| 29 from midship tv down | 19 |
| 29 to strbd | 20 |
| 30 20191021_122253 | 20 |
| 30 elec panel open | 20 |
| 31 20191021_121728 | 20 |
| 31 20191021_122024 | 21 |
| 31 20191021_122111 | 21 |
| 32 eng hours 2 | 21 |
| 32 eng hours | 21 |
| 32 gen-tank mon-etc | 21 |
| 32 gen hours 2 | 21 |
| 34 20191021_121619 | 22 |
| 34 screens down wiring close | 22 |
| 35 nav seat flip up slanted | 22 |
| 35 nav area shelf up | 22 |
| 40 20191021_122516 | 22 |
| 40 20191021_122332 | 22 |
| 41 20191021_123222 | 23 |
| 40 to strbd stern | 23 |
| 42 20191021_123201 | 23 |
| 45 to bow 2 | 23 |
| 47 strbd | 23 |
| 48 splendide cabinet closed | 23 |

| | |
|---|----|
| 48 splendide cabinet open | 24 |
| 49 20191021_122457 | 24 |
| 50 forward from door | 24 |
| 50 forward port | 24 |
| 50 forward stbd | 24 |
| 50 port wide | 24 |
| 60 to port 3 | 25 |
| 65 from shower strbd | 25 |
| 70 20191021_123308 | 25 |
| 70 from door to port - shelves and desk | 25 |
| 79 20191021_123445 | 26 |
| 71 20191021_123335 | 26 |
| 79 eng rm door | 26 |
| 79 eng rm to stern | 26 |
| 79 sea chest | 26 |
| 80 20191021_123832 | 26 |
| 80 20191021_123930 | 27 |
| 80 20191021_124056 | 27 |
| 80 forward bulkhead | 27 |
| 80 to strbd wide | 27 |
| 85 generator a | 27 |
| 85 generator b | 27 |
| 89 1 | 28 |
| 85 xantrex plate b | 28 |
| 90 Ellis Is. MB | 28 |
| 89 3 | 28 |
| 90 Moon Beam and the Ferry | 28 |
| 90 Moon Beam with the Lady3 | 28 |
| 79 20191021_123445 | 29 |

| | |
|-----------------------|----|
| 99 moon beam docked | 29 |
| КОНТАКТЫ | 30 |
| Контактная информация | 30 |
| Телефоны | 30 |
| Время работы | 30 |
| Адрес | 30 |

ХАРАКТЕРИСТИКИ

Обзор

CURRENTLY BEING RE-POWERED WITH TWIN YANMAR 4JH57 CE ENGINES BY A CERTIFIED YANMAR DEALER. Moon Beam will be available for showing when work is completed. Showing availability will be posted on listing. The Great Harbour N37's are renowned for their stability, unsinkability, livability and cruisability. Originally designed with island hopping in mind, the Great Harbour is equally suited to the Great Loop and living aboard, with a galley unequalled in even larger boats, a standup walk-in engine room, large tankages and amazing storage capability. Moon Beam, offering the addition equipment of solar, water maker and diesel heater is particularly suited for extended season cruising and spending time off the beaten track in comfort and safety.

Основная информация

Тип судна: Trawler Yacht

Модельный год: 2007

Год постройки: 2007

Страна: United States

Размеры

Длина общая: 37' 0" (11.28m)

Ширина: 16' 0" (4.88m)

Макс. осадка: 3' 0" (0.91m)

Скорость, вместимость и масса

Вместимость воды: 150 Gallons

Вместимость сточного бака: 100 Gallons

Объем топливного бака: 650 Gallons

Размещение

Всего кают: 2

Всего ком. состава: 1

Корпус и палуба

Материал корпуса: Fiberglass

Информация о двигателе

Двигатели: 2

Производитель: Yanmar

Модель: 4JH4E

Тип двигателя: Inboard

Тип топлива: Diesel

ПОДРОБНОЕ ОПИСАНИЕ

MAIN DESCRIPTION

CURRENTLY BEING RE-POWERED WITH TWIN YANMAR 4JH57 CE ENGINES BY A CERTIFIED YANMAR DEALER. Moon Beam will be available for showing when work is completed. Showing availability will be posted on listing. The Great Harbour N37's are renowned for their stability, unsinkability, livability and cruisability. Originally designed with island hopping in mind, the Great Harbour is equally suited to the Great Loop and living aboard, with a galley unequalled in even larger boats, a standup walk-in engine room, large tankages and amazing storage capability. Moon Beam, offering the addition equipment of solar, water maker and diesel heater is particularly suited for extended season cruising and spending time off the beaten track in comfort and safety.

GREAT HARBOUR N37 WALKTHROUGH

Moon Beam can be boarded via the swim platform and aft gate, and port and starboard side gates at two levels. Generous, safe walk around decks, guarded by 40" high railings, lead to the pilothouse doors in the aft cockpit and starboard adjacent to the helm. Entering from the aft cockpit, there is a long settee to starboard which can be converted to bunks. To port is an L-shaped seating area and high-low table. Moving forward to port is a navigator seat and desk with hinged lid for chart storage and a fold-up computer table. To starboard is the well equipped helm and fold up helm seat. Continuing forward and down a few steps, to starboard is the galley with household appliances and plenty of cabinetry and counter space. Tucked away in a cabinet is the vented Splendide washer/dryer. To port is the guest stateroom with a settee that converts to a full size berth along with cabinetry and the door to the engine room. Moving forward in the companionway, to port is the head with vanity, VacuFlush toilet and large shower. The master stateroom is located in the bow with a standard queen sized peninsula berth flanked by generous cabinetry.

GREAT HARBOUR N37 ACCOMMODATIONS

Moon Beam offers a centerline island queen berth in the master stateroom. This is a true standard size queen bed. The settee in the guest stateroom converts to a full size berth. The starboard settee in the salon converts to two single bunks. There is a single head with large shower.

GREAT HARBOUR N37 SALON AND HELM

The Great Harbour N37 salon can be accessed from the aft cockpit door or the starboard door adjacent to the helm. L-shaped seating on port side with storage below the cushions. Long settee

on starboard side with five drawers below
 Back of starboard settee raises to make generous sized bunks
 Fold up upholstered adjustable helm seat with fold out foot rest
 Navigator's seat with flip up work space
 Navigator desk with reading lamp and hinged top to reveal chart storage area
 Hinged table extension attached to navigator desk for extra work space
 Leatherette upholstery
 Cushions to convert L-shaped seating/table to berth
 Hi-low table with fold out leaves
 Large sliding windows with screens
 Wood valances and blinds in salon
 Remote controlled electric cellular shades on the raked windshields
 Over head lighting and wall mounted reading lamps
 Overhead helm dual (white/red) light for night navigation
 Fold down 26" Sony Bravia TV mounted in mahogany cabinet with electric lift
 Glass helm with electronics and electrical panel adjacent to the starboard door.
 Easy access to back of electrical panel and wiring for the electronics
 Floor hatch to access bosun's locker (aka basement)
 Teak and holly sole
 Head room 6'6"
 For a 360 view of the salon, copy and paste the link:

GREAT HARBOUR N37 GALLEY

Moon Beam boasts a galley that is unparalleled in a 37' vessel - or even many larger vessels. The galley is located starboard a few steps down forward of the helm. Features include:
 GE Profile 22.5 cu/ft stainless steel refrigerator/freezer with water and ice dispenser
 Kenyon four burner ceramic cooktop
 GE Profile microwave/convection oven
 U-shaped Corian counter top with integrated double sink, breakfast bar and two stools
 Corian insert to cover sink
 Generous mahogany cabinetry, added shelf unit above sink
 TV outlet
 Two 12" diameter opening portlights with (new) screens
 Overhead opening Bomar hatch with shade and screen
 InterVac SeaVac central vacuum
 Splendide 2000S washer/dryer, vented for better drying
 Under sole storage
 Teak and holly sole
 Head room: 6'3"
 For a 360 view of the galley, copy and paste the link:

GREAT HARBOUR N37 MASTER STATEROOM

The master stateroom is located in the bow with a centerline island berth. Features include:
 Standard queen size Temperpedic mattress
 Four large drawers under the foot of the bed
 Mahogany cabinetry port and starboard includes drawers, bins and generous hanging lockers
 Overhead opening Bomar hatch with screen/shade
 Port and starboard 12" diameter opening portlights with (new) screens
 Overhead lighting and wall mounted bedside reading lamps
 Port and starboard floor hatches to access below sole storage areas
 Easy access to the chain locker through bulkhead openings above the berth
 Teak and holly sole
 Head room: 6'4"
 For a 360 view of the master stateroom, copy and paste the link:
 For a 360 view of the master stateroom, galley and head companionway, copy and paste the link:

GREAT HARBOUR N37 GUEST STATEROOM

The guest stateroom is to port opposite the galley. Features include:
 Portside settee that expands to full size berth with drawers below
 Mahogany cabinetry includes hanging locker, drawers, folding desktop and book shelves forward and an additional cabinet aft.
 One 12" diameter

opening portlight with (new) screen
Floor hatch to access storage area below
Teak and holly sole
Door to engine room
Head room: 6'3"
For a 360 view of the guest stateroom copy and paste the link:

GREAT HARBOUR N37 HEAD

The head is located to port adjacent to the master stateroom. Features include:
Vanity cabinet with Corian countertop and integrated sink
Mirrored medicine cabinet with cup and toothbrush holders
Vacu-flush toilet
Large shower
A/C vent
Opening 12" diameter port light with (new) screen
Overhead lighting
Head room in the shower: 6'
Copy and paste the link for a 360 view of the head:

GREAT HARBOUR N37 BOSUN'S LOCKER

Also referred to as the basement, the bosun's locker is access through a hatch in the sole of the salon, with molded fiberglass stairs. This storage area runs the full width of the vessel with a minimum height of 40". Features include:
AC outlet
Overhead lighting
Waeco Cool/Freeze 12/24v DC, 120v AC (Model CF-110-AV120-U) 3.74 cu/ft refrigerator/freezer
Copy and paste the link for a 360 view of the Bosun's locker:

GREAT HARBOUR N37 DECK EQUIPMENT

Walk around decks with 40" tall sturdy aluminum (1-5/8") railings with midlevel lifeline between stanchions
Two deck boxes, with cushions, below pilot house windshield
50 amp shore power/cable connection
24 volt Maxwell 1200 Horizontal twin gypsy windlass with adjacent deck mounted foot controls in addition to remote controls at helm
300' each, 5/16" G4-HT galvanized chain rodes
Anchors - primary - Rocna 55lb; secondary - Danforth
Fresh water anchor washdown
Hinged crucifix mast with crow's nest and platform
Jabsco remote control searchlight
Rudder lazarette access in aft cockpit
Wireless weather station
Hot and cold fresh water hand held shower in aft cockpit
AC outlet in aft cockpit
For a 360 view of the aft cockpit, copy and paste the link:
For a 360 view of the foredeck and mast with crow's nest, copy and paste the link:
For a 360 view of the solar panels and roof, copy and paste the link:

GREAT HARBOUR N37 ELECTRONICS

AIS transponder em-trak B100 Class B
Complete Garmin Navigational suite to include two 16" touch screens (new 2019)
Garmin Radar (new 2019)
HF/SSB radio transmitters with SailMail modem
Icom AT-140 SSB Automatic Antenna Tuner
Icom SP-24 external speaker
Icom M-602 Marine VHF radio
MicroCommader 9110 electronic engine controls
Raymarine auto pilot
Hand held VHF
Searchlight remote control

GREAT HARBOUR N37 ELECTRICAL

- Three 140 watt Suntech solar panels with BZ MPPT 500 charge controller

Xantrex Freedom Sine Wave 3012 inverter/charger (2013) Xantrex System Control
PanelMasPower MP8M 8kw generator Twelve 6 volt AGM batteries Two 50 amp power cords - 50 feet each One 30 amp power cord - 50 feet Smart Y adapter Various adapters

GREAT HARBOUR N37 AUDIO/VISUAL

Delphi Roady XM satellite radio Fusion MS-700 Entertainment System Sony Bravia 26" LCD TV in overhead salon cabinet with electric lift Sharp 19" LCD TV in master stateroom TV outlet in galley Dynex DVD player in master stateroom KVH TracVision C3 satellite TV Glomex TV antenna

GREAT HARBOUR N37 ENGINE/MECHANICAL

The stand-up engine room is accessed through a door in the guest stateroom. Head room ranges from 61" to 69". Twin 54 hp naturally aspirated 4JH4E Yanmar diesel engines Seafari Escape reverse osmosis watermaker Built in workbench equipped with vice and tool chest Reverso oil change system for engines and generator Fuel polisher Sea Chest for all through hulls Two Marine Air Systems air conditioning units ESPAR 12v diesel heater Engine room exhaust fan For a 360 view of the engine room, copy and paste the link:

GREAT HARBOUR N37 TENDER

2006 Zodiac 10'8" Model SB5 Torqeedo Travel 1003 Short outboard motor

GREAT HARBOUR N37 FIRE AND SAFETY EQUIPMENT

LifeSling mounted on aft cockpit railing Fire blanket mounted in companionway adjacent to galley Fire extinguishers in salon and guest stateroom Flares Signal kit McMurdo EPIRB Smoke and carbon monoxide detector in guest stateroom

GREAT HARBOUR N37 EXCLUSIONS

Owner's personal belongings and kayak are excluded from the sale. Some art is negotiable.

GREAT HARBOUR N37 CO-BROKERAGE COMMISSION SPLIT

All our listings are available for co-brokerage on a 50-50 commission split agreement when the selling broker shows the listing and attends the survey. If the selling broker requires a courtesy showing and we are available to conduct a courtesy showing on our listing, the co-brokerage commission split is 60% listing commission and 40% selling commission. If the selling broker does not attend the survey, the co-brokerage commission split is 70% listing commission and 30% selling commission.

DISCLAIMER

The Company offers the details of this vessel in good faith but cannot guarantee or warrant the accuracy of this information nor warrant the condition of the vessel. A buyer should instruct his agents, or his surveyors, to investigate such details as the buyer desires validated. This vessel is offered subject to prior sale, price change, or withdrawal without notice.

Исключения

При продаже яхты исключаются личные вещи владельца.

Отказ от ответственности

Компания предоставляет описание судна или яхты добросовестно, но не может гарантировать точность этой информации, а также не ручается за техническое состояние. Покупатель должен проинструктировать своих агентов или оценщиков исследовать представленную информацию более подробно, по собственному желанию. Продажа судна или яхты, изменение цены или снятие с продажи будет происходить без предварительного уведомления.

ФОТОГРАФИИ

09 moon beam anchored-cropped



15 20191021_121315



16 to strbd bow



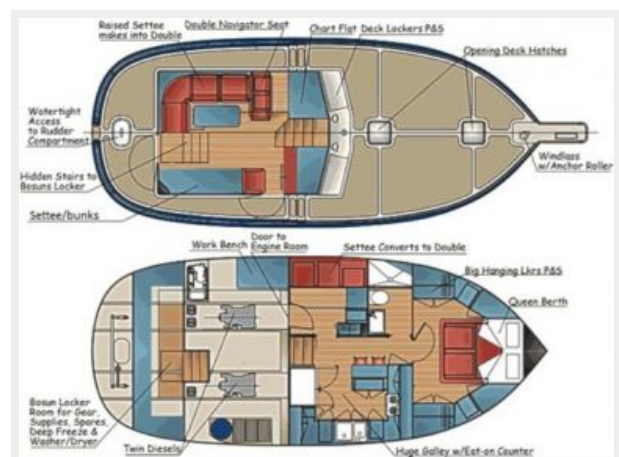
17 strbd wide



17z 20191021_123802



18 nav37_plans-edited1-jpg



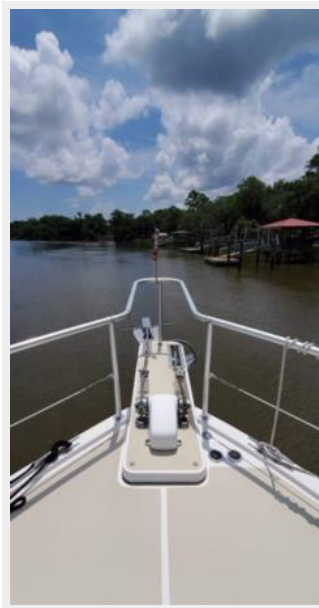
19 aft cockpit 2



19 aft cockpit 3



19 bow pulpit



19 deck from bow pulpit



19 port side to bow



19 port side to stern



19 roof - solar



19 roof to bow



19 starbd side to stern



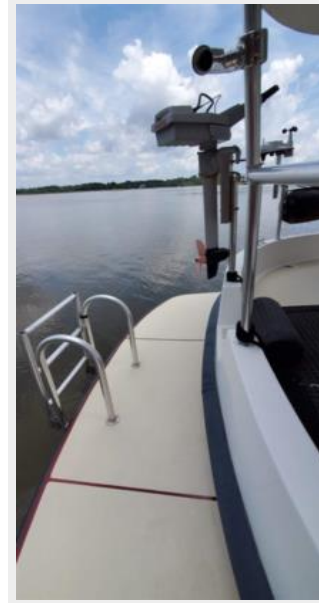
19 starbd to bow



19 swim platform 2



19 swim platform



19z at dock 2



20 1aft cockpit



20 20191021_121029



20 20191021_121106



20 20191021_121238



20 20191021_121327



25 20191021_124402



25 20191021_124526



25 20191021_124628



25 20191021_124710



25 20191021_124755



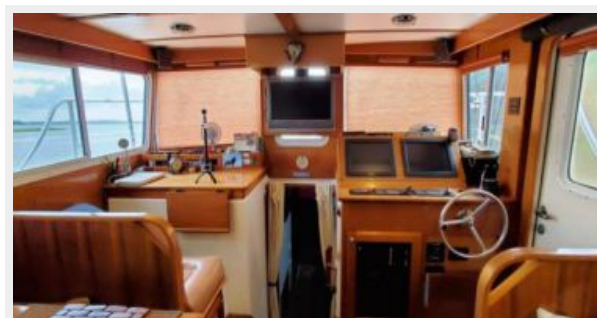
25 20191021_124938



25 20191021_125001



29 from midship tv down



29 to strbd



30 20191021_122253



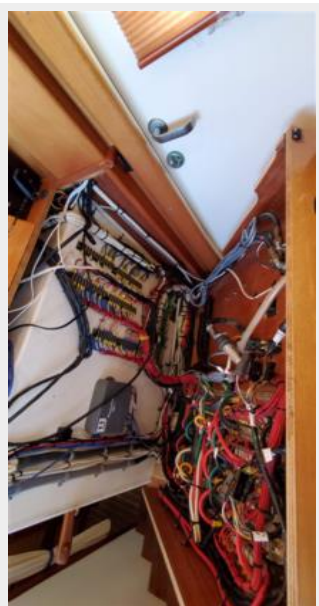
30 elec panel open



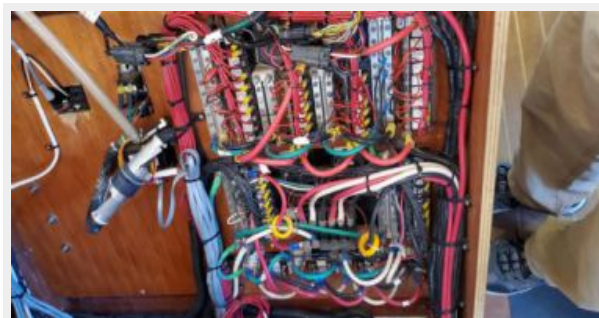
31 20191021_121728



31 20191021_122024



31 20191021_122111



32 eng hours 2



32 eng hours



32 gen hours 2



32 gen-tank mon-etc



34 20191021_121619



34 screens down wiring close



35 nav area shelf up



35 nav seat flip up slanted



40 20191021_122332



40 20191021_122516



41 20191021_123222

40 to strbd stern



42 20191021_123201



45 to bow 2



47 strbd



48 splendide cabinet closed



48 splendide cabinet open



49 20191021_122457



50 forward from door



50 forward port



50 forward stbd



50 port wide



60 to port 3



65 from shower strbd



70 20191021_123308



70 from door to port - shelves and desk



79 20191021_123445



71 20191021_123335



79 eng rm door



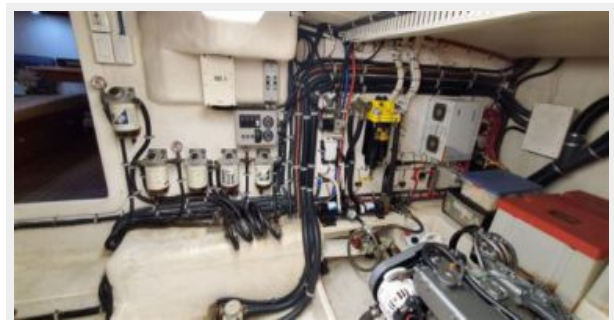
79 eng rm to stern



79 sea chest



80 20191021_123832



80 20191021_123930



80 20191021_124056



80 forward bulkhead



80 to strbd wide



85 generator a



85 generator b

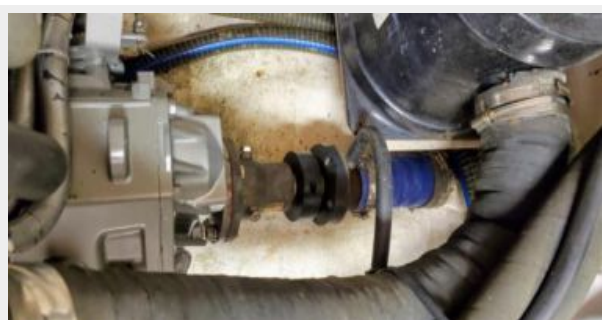


89 1

85 xantrex plate b



89 3



90 Ellis Is. MB



90 Moon Beam and the Ferry



90 Moon Beam with the Lady3



79 20191021_123445

99 moon beam docked



КОНТАКТЫ

Андрей Шестаков (Andrey Shestakov) – ведущий яхтенный брокер отдела продаж яхт и судов компании Shestakov Yacht Sales Inc. Официальный представитель Shestakov Yacht Sales Inc. для русскоговорящих клиентов в центральном офисе компании в Майами/Форт Лодердейл/Флорида/США.

Контактная информация

Email: andrey@shestakovyachtsales.com

Web: shestakovyachtsales.com

Телефоны

Краснодарский край: **+7(918)465-66-44**

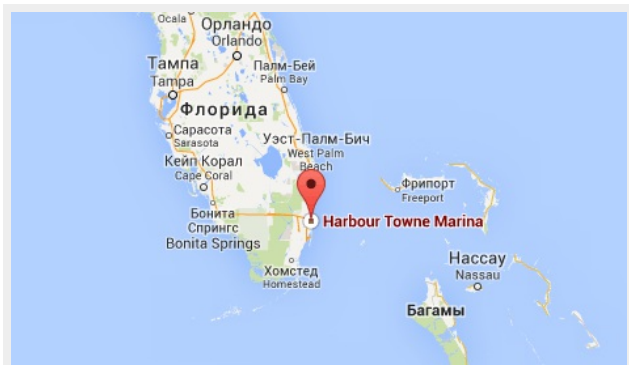
США, Майами, Флорида: **+1(954)274-4435**

Время работы

Понедельник – Суббота: **9:00 - 21:00**
EDT

Воскресенье: **Закрето**

Адрес



Harbour Towne Marina, 850 NE 3rd St,
STE 213, Dania, FL 33004