

LA LIBERTE — SEA RAY



Builder: SEA RAY

LOA: 58' 0" (17.68m)

Year Built: 2006

Beam: 16' 0" (4.88m)

Model: Motor Yacht

Max Draft: 4' 3" (1.30m)

Price: PRICE ON APPLICATION

Location: United States

Our experienced yacht broker, Andrey Shestakov, will help you choose and buy a yacht that best suits your needs **La Liberte — SEA RAY** from our catalogue. Presently, at Shestakov Yacht Sales Inc., we have a wide variety of yachts available on our sale's list. We also work in close contact with all the big yacht manufacturers from all over the world.

If you would like to buy a yacht **La Liberte — SEA RAY** or would like help answering any questions concerning purchasing, selling or chartering a yacht, please call **+1(954)274-4435**

TABLE OF CONTENTS

TABLE OF CONTENTS	2
SPECIFICATIONS	4
Overview	4
Basic Information	4
Dimensions	4
Speed, Capacities and Weight	4
Accommodations	5
Hull and Deck Information	5
Engine Information	5
DETAILED INFORMATION	6
Additional Information:	6
Exclusions	12
Disclaimer	12
PHOTOS	13
Profile	13
Profile	13
Profile	13
Profile	13
Profile	13
Profile	13
Salon	14
Salon	14
Galley	14
Galley	14
Master Sateroom	14
Master Stateroom	15
Flybridge	17
Cockpit	17

Bow	18
Bow	18
Tender	18
Engine Room	18
CONTACTS	20
Contact details	20
Telephones	20
Office hours	20
Address	20

SPECIFICATIONS

Overview

Beautiful 2006 58' Sea Ray Sedan Bridge, loaded with options.Vessel register under an LLC.

Everything about the 580 seems big, fromthe expansive salon with facing leather sofas and cherry wood cabinets to the spacious flybridge with standard fiberglass hardtop and seating for a small crowd. A gourmet galley is forward of the salon, opposite a wraparound dinette with storage below. On the lower level, the 580's opulent full-beam master stateroom features twin end tables and tons of storage. A spacious VIP stateroom forward contains a queen bed, and the second guest stateroom has angled bunk beds. Additional features of the 580 Sedan Bridge include flybridge air conditioning, Vetus bow & stern thruster, Yacht Controller,built-in cockpit seating, extended swim platform with hydraulic lift, and a state-of-the-art entertainment system.

Basic Information

Category: Motor Yacht	Model Year: 2006
Year Built: 2006	Country: United States
Fly Bridge: Yes	Cockpit: Yes

Dimensions

LOA: 58' 0" (17.68m)	Beam: 16' 0" (4.88m)
Max Draft: 4' 3" (1.30m)	

Speed, Capacities and Weight

Displacement: 51500 Pounds	Water Capacity: 150 Gallons
Holding Tank: 68 Gallons	Fuel Capacity: 700 Gallons

Accommodations

Total Cabins: 3

Total Heads: 2

Hull and Deck Information

Hull Material: Fiberglass

Engine Information

Engines: 2

Manufacturer: MAN

Model: CRM V-8 DIESEL

DETAILED INFORMATION

Additional Information:

ADDITIONAL UNITS

Nautica Rib 11DL 2011

Engine: Yamaha 25HP

HELM AND ELECTRONICS

- Great helm area with 2 large helm seats and overhead electronics box
- 2 7612 Garmins
- 2x MAN MMDS-CLC 6.3 Engine Monitors
- Raymarine VHF
- Vetus Bow Thruster/ stern thruster
- Rudder Angle Indicator
- Cockpit A/C
- Bridge Stereo
- Large storage area
- Drawer for charts
- Helm offers great visibility forward and aft
- Large bench seat behind helm seat with great storage & seating
- Garmin Autopilot
- ACR Search Light
- VHS Radio
- New Yacht Controller

MASTER STATEROOM

The master is full beam with an athwartship bed that you can easily access from 3 sides(easy to make) there are built-in nightstands with drawers on either side of the bed. The aft bulkhead is mirrored and there are large port lights in the hull giving the stateroom a very large feel.

- Queen size bed with innerspring mattress, pillows, sheets, coordinated spread and carpet storage below with a gas assisted hatch
- Corian counter tops
- Privacy door with full length bezeled mirror
- Hanging locker Maple lined with light
- Stereo, Bose Acoustimass with surround sound Jewel Cube speakers
- Dresser with drawers and lift top vanity
- Storage locker Maple lined with adjustable shelves
- Toshiba LCD Flatscreen TV

- DVD/CD/VCR unit with remote

MASTER HEAD

- Satin Finish Interior
- Access direct from stateroom with privacy door
- Wood flooring
- Stainless steel elliptical handrails
- Large Vacu flush head
- 24 Volt power vent
- Shower with seat shower wand and acrylic door
- Large Mirrored medicine chest
- Vanity with Corian counter top
- Grohe faucet and Stainless undermount sink

VIP STATEROOM

- Queen size bed with innerspring mattress
- Pillows, sheets and coordinated spread
- Carpeted storage beneath bed with gas assisted hatch
- Great amount of drawer storage
- Maple lined hanging locker with light
- Mirrored forward bulkhead
- Storage cabinet with drawes port side
- Overhead opening hatch with retractable sun and bug screens
- Toshiba Flatscreen TV/DVD
- Private access to head and shower
- SMX a/c control

GUEST STATEROOM

- Perpendicular upper and lower bunks
- Pillows, sheets and coordinated spreads
- Storage below bottom bunk
- Maple lined hanging locker with light
- Shelf storage
- Toshiba TV/DVD
- Splendide 2000 Washer/Dryer combo is located in companion way just forward of the guest stateroom

GUEST HEAD/ SHOWER

- Satin finish
- Access from hallway or VIP cabin to head
- Tile flooring
- Stainless steel elliptical hand rails
- Large Vacu-flush head
- Shower with seat and adjustable wand
- Mirrored medicine chest
- Vanity with solid surface counter top
- Solid surface sink with Grohe faucet
- Storage below vanity

GALLEY

- Corian countertops w/cutting board
- Sink w/single lever Moen faucet
- Lower storage cabinets
- Glass & dish storage w/wine rack
- Kenyon 2-burner recessed stove
- Wine rack w/custom bottle storage
- Sub Zero undercounter freezer w/icemaker
- Sub Zero undercounter refrigerator
- Panasonic icrowave/convection oven w/stainless steel face
- 12V outlet
- Power vent
- Slide-out trash receptacle
- Wood flooring

DINETTE

- Wrap-around seating with storage below
- Table with wood surface and storage below

TECHNICAL CONTROL STATION

- 24 Volt bow thruster
- Emergency engine stop
- Emergency engine start
- Compass
- Air horn with accumulator tank
- Brushed metal instrument panels

- Instrumentation, custom Sea Ray backlit with low glare blue night lighting and stainless steel bezels
- Electronic shift and throttle controls
- ACR remote control spotlight with dual halogen bulbs
- Power assisted hydraulic steering
- Wood accent tilt steering wheel
- Illuminated weatherproof rocker switches with dimmer control

ELECTRICAL SYSTEMS

- 4 8D batteries
- 1 group 27 battery for generator
- Battery charger 120V/10Amp/12V
- Battery charger 240V/50Amp/24V
- Battery charger overcurrent protection
- Battery equalizer
- Battery solenoid switches
- Cable TV inlet with cord
- Glendenning Cablemaster with 50' cord
- Shore power isolation transformer
- Color coded and labled wiring with chafe protection
- Two New Air Conditioner

GENERATOR

- Onan 21.5 kW diesel
- Soundshield
- Remote start
- Sea cock and sea strainer
- Fuel filter
- Muffler
- Freshwater cooling
- Water heater 4 hours

ENGINE ROOM

- 3 24 volt bilge pumps/automatic
- 2 24 volt highwater bilge pumps/automatic
- Power Pac exhaust system with mufflers and sound insulation
- Fan
- Handheld fire extinguishers
- Automatic dual fire suppression sytem with engine shutdowns, overrides and manual pull

- Diamond plate fiberglass flooring
- Gel coated engine room
- 2" vinyl barrier insulation
- Stainless steel ladder removable, swing away
- Trouble light with cord reel
- Oil change system for engines, transmissions and generator

FUEL SYSTEM

- Selector for generator
- Racor dual fuel filters 2 per engine
- Type A1 fuel lines
- Aluminum tanks with electric sending units

WATER SYSTEM

- 150 gallon tank
- Water manifold system
- 18 gallon 240 volt water heater
- 2 24 volt water pumps
- Hot and cold shower at cockpit

WASTE SYSTEM

- Cabin sump pump 24 volt
- Central drain system
- Vacu flush head system
- Holding tank level indicators at MDP and heads
- 68 gallon holding tank
- Dockside pumpout fitting
- Macerator with seacock interlock system

UNDERWATER GEAR

- Bonding system with Zinc plate
- 2 1/2" Stainless steel Aquamet propeller shafts
- Nibral 4 blade cupped propellers
- Maganese Bronze rudders with stainless steel posts
- Sea cocks and sea strainers
- Dripless shaft logs and spare seal kit
- Maganese Bronze struts
- Trim tabs with dual rams with pump

HULL & DECK FEATURES

- 316 stainless steel bow rails with welded stanchions, intermediate rails and life lines
- 316 stainless steel deck rails, hand rails and deck plates
- 8 custom Sea Ray cleats stainless steel
- 6 portlights, stainless steel 2 opening
- 20x20 deck hatch

CANVAS (SUNBRELLA)

- Aft curtain
- Hardtop enclosure
- Windshield shades

WINDLASS SYSTEM

- Galvanized anchor
- Anchor locker with hatch
- Stainless steel anchor chute
- Anchor washdown with spigot and hose
- Windlass with foot switches

COCKPIT FEATURES

- Carpet liner snap in
- Sliding and lockable stainless steel door with screen
- Transom door
- Self bailing
- Stainless steel hand rails
- Engine hatch gas assisted
- Lighting
- GFI outlet
- Molded deck access steps
- Storage lockers
- Specifications
- Overall Length : 58'7" / 17.88 m
- Overall Length w/Opt. Hydraulic Swim Platform : 61'4" / 18.69 m
- Beam : 16' / 4.88 m
- Draft (Inboards) : 51" / 130 cm
- Dry Weight : 51,500 lbs / 23,360 kg
- Fuel Capacity : 700 gal / 2,649 L

- Water Capacity : 150 gal / 568 L
- Holding Tank : 68 gal / 257 L
- Dead Rise : 17° /

Exclusions

Owner's personal belongings.

Disclaimer

The Company offers the details of this vessel or yacht in good faith but cannot guarantee or warrant the accuracy of this information nor warrant the condition of the vessel. A buyer should instruct his representatives, agents, or his surveyors, to investigate such details as the buyer desires validated. This vessel or yacht is offered subject to prior sale, price change, or withdrawal without notice.

PHOTOS

Profile



Profile



Profile



Profile



Profile



Profile



Salon



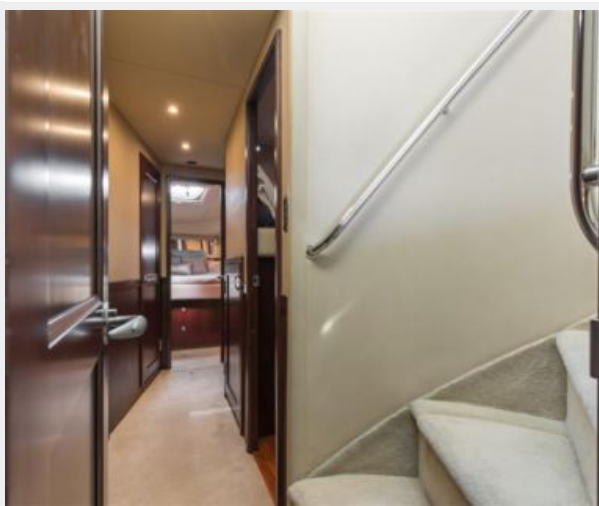
Salon



Galley



Galley



Master Sateroom



Master Stateroom







Flybridge



Cockpit





Bow



Bow



Tender



Engine Room





CONTACTS

Andrey Shestakov, leading yacht broker of the sales department of Shestakov Yacht Sales Inc. Shestakov Yacht Sales Inc., the official representative of the Miami/Fort Lauderdale FL headquarters.

Contact details

Email: **andrey@shestakovyachtsales.com**

Web: shestakovyachtsales.com/en/

Telephones

USA: **+1(954)274-4435**

Office hours

Monday – Saturday: **9:00 - 21:00 EDT**

Sunday: **closed**

Address



Harbour Towne Marina, 850 NE 3rd St,
STE 213, Dania, FL 33004