

## WIGGLE ROOM — OCEAN ALEXANDER



**Builder:** OCEAN ALEXANDER

**Year Built:** 2012

**Model:** Motor Yacht

**Price:** PRICE ON APPLICATION

**Location:** United States

**LOA:** 90' 0" (27.43m)

**Beam:** 22' 0" (6.71m)

**Min Draft:** 5' 6" (1.68m)

**Max Draft:** 6' 5" (1.96m)

Our experienced yacht broker, Andrey Shestakov, will help you choose and buy a yacht that best suits your needs **Wiggle Room — OCEAN ALEXANDER** from our catalogue. Presently, at Shestakov Yacht Sales Inc., we have a wide variety of yachts available on our sale's list. We also work in close contact with all the big yacht manufacturers from all over the world.

If you would like to buy a yacht **Wiggle Room — OCEAN ALEXANDER** or would like help answering any questions concerning purchasing, selling or chartering a yacht, please call **+1(954)274-4435**

# TABLE OF CONTENTS

TABLE OF CONTENTS	2
SPECIFICATIONS	7
Overview	7
Basic Information	7
Dimensions	7
Speed, Capacities and Weight	7
Accommodations	7
Hull and Deck Information	8
Engine Information	8
DETAILED INFORMATION	9
General	9
Interior Decor	9
Master Stateroom	10
Master Head	10
VIP & Guest Staterooms	10
Crew Quarters	11
VIP & Guest Heads	11
Hull & Bottom	12
Deck/PH	12
Engines	12
Steering Control	13
Generator	13
Windlass/Mooring	13
Thruster/Stabilizers	13
Mechanical - Other	14
Fresh Water System	14
Hot Water Heater	14
Fuel System	15

Sewage Treatment System	15
Bilge/Discharge	15
Deck/Flybridge	15
AC System	15
Air Conditioning	16
Shore Power Connector	16
Lighting	16
Inverter/Charger	17
Battery	17
Bonding	17
Furuno Navigation Package	17
Electrical - Other	18
Audio/Visual	18
Main Deck/Bridge	19
Flybridge & Dinette	20
Skylounge	20
Salon	21
Galley	21
Generator Hours	21
Certification	22
Disclaimer	22
Exclusions	22
Disclaimer	22
PHOTOS	23
IMG_3891	23
IMG_3896	23
IMG_3892	23
IMG_3903	23
Wiggle Room_Swim Platform1	23

Wiggle Room_Swim Platform6	23
Wiggle Room_Aft Deck8	24
Wiggle Room_Aft Deck3	24
Wiggle Room_Aft Deck4	24
Wiggle Room_Aft Deck10	24
Wiggle Room_Bow9	25
Wiggle Room_Bow1	25
Wiggle Room_Bow5	25
Wiggle Room_Bow6	25
IMG_2806	25
IMG_2807	25
IMG_2808	26
IMG_2809	26
IMG_2810	26
IMG_2811	26
IMG_2818	26
IMG_2819	26
IMG_2820	27
IMG_2835	27
IMG_2834	27
IMG_2836	27
Wiggle Room_Galley3	27
Wiggle Room_Galley5	27
Wiggle Room_Galley2	28
Wiggle Room_Galley1	28
IMG_2813	28
IMG_2816	28
IMG_2812	28
IMG_2814	28

Wiggle Room_Galley8	29
IMG_2817	29
Wiggle Room_Enclosed Flybridge6	29
Wiggle Room_Enclosed Flybridge9	29
Wiggle Room_Enclosed Flybridge2	30
Wiggle Room_Enclosed Flybridge10	30
Wiggle Room_Enclosed Flybridge11	30
Wiggle Room_Enclosed Flybridge5	30
Wiggle Room_Enclosed Flybridge3	30
Wiggle Room_Enclosed Flybridge Aft Deck6	30
Wiggle Room_Enclosed Flybridge Aft Deck4	31
Wiggle Room_Enclosed Flybridge Aft Deck8	31
IMG_3900	31
IMG_3906	31
IMG_3907	31
Wiggle Room_Master Stateroom1	31
Wiggle Room_Master Head9	32
Wiggle Room_Master Stateroom3	32
Wiggle Room_Master Head7	32
Wiggle Room_Master Head6	32
Wiggle Room_Master Head1	33
Wiggle Room_Master Stateroom8	33
Wiggle Room_Crew Quarters2	33
Wiggle Room_Guest Stateroom1	33
Wiggle Room_Guest Head2	34
Wiggle Room_Guest Stateroom5	34
Wiggle Room_Forward Stateroom8	34
Wiggle Room_Forward Stateroom1	34
Wiggle Room_Forward Head1	35

Wiggle Room_Crew Quarters7	35
Wiggle Room_Crew Quarters4	35
Wiggle Room_Crew Quarters5	35
Wiggle Room_Engine Room1	36
Wiggle Room_Engine Room4	36
Wiggle Room_Engine Room7	36
IMG_2828	36
Accomodation Deck and Upper Deck Rendering	36
Main Deck Rendering	36
CONTACTS	37
Contact details	37
Telephones	37
Office hours	37
Address	37

# SPECIFICATIONS

## Overview

Wiggle Room is a 2012 Ocean Alexander 90A featuring three staterooms all with en suite heads, two day heads, crew quarters, captain's quarters and crew head. Her exterior and interior are in impeccable condition and you will enjoy playing host in her large salon. Upwards is an enclosed fly bridge with dinette paired with an entertaining aft deck complete with sun shades, bar, grill and large wrap around seating at the table. She is powered by twin MTU 10V-200-M94 1650HP engines with 1450 hours. Her engines and generators have recently been serviced and she just received a full ceramic coat along with new bottom paint. A 12ft tender is included.

## Basic Information

**Category:** Motor Yacht

**Model Year:** 2012

**Year Built:** 2012

**Country:** United States

**Fly Bridge:** Yes

## Dimensions

**LOA:** 90' 0" (27.43m)

**Beam:** 22' 0" (6.71m)

**Min Draft:** 5' 6" (1.68m)

**Max Draft:** 6' 5" (1.96m)

## Speed, Capacities and Weight

**Water Capacity:** 650 Gallons

**Fuel Capacity:** 3000 Gallons

## Accommodations

**Total Cabins:** 3

**Crew Cabin:** 2

**Crew Heads:** 1

---

## Hull and Deck Information

---

**Hull Material:** Fiberglass

**Hull Color:** White

---

## Engine Information

---

**Engines:** 2

**Manufacturer:** MTU

**Model:** 10V-200-M94

**Engine Type:** Inboard

**Fuel Type:** Diesel



---

# DETAILED INFORMATION

---

## General

---

- Vinylester resin
- Carbon fiber infused composite hull and decks
- Airex® C70.90 PVC foam sandwich construction above water line (closed cell, crosslinked polymer foam w/ highest elongation in its class for great impact strength. Sound and temperature insulation w/ self extinguishing properties)
- Longitudinal and lateral fiberglass stringers filled with highdensity foam
- Ocean Alexander employs various techniques to reduce sound and vibration. Focusing on providing a quiet and comfortable yachting environment through various proprietary techniques of controlling sound and noise transmission. Some of these techniques include, multiple insulation barriers including reflective materials, absorptive materials, dampening materials, air pockets and flexible and isolation mounts. Ultimately resulting in vibration/sounds levels that are industry leading and at times 1/2 to 1/10 of ISO6954 requirements
- Fiberglass with infusion and “vacuum bag technology”
- Reinforced collision bulkhead
- Reinforced aluminum lbeam
- White PU paint on exterior in lieu of white gelcoat
- Frameless windows
- All exterior hardware to be S/S 316 or better and to manufacturer requirements
- Watertight bulkheads with further sound and temperature insulation

## Interior Decor

---

- Walnut paneling and cabinetry in semigloss
- High quality European door locks
- Cedarlined, hanging locker with auto lighting
- Majilite Fabric for lower walkway walls
- Painted plywood flooring prepared for carpet, except wood flooring in skylounge & fore dinette
- Concealed hinges throughout interior cabinets w/ auto soft closing function that prevents a kitchen cabinet door from slamming, as it slowly and silently brings the door to a closed position
- Ergonomically designed mattresses and settees
- Mattresses for berths (independent his/her construction allowing for disturb free movement during sleep)
- Maytag™ 2400AWW stacked washer/ dryer (Commercial quality, Energy star washer/dryer)

w/ generous 2.4 cu. ft. capacity) in lower foyer

- Refrigerator and icemaker in lower foyer
- Granite and marble floor in inlay with custom pattern in lower foyer
- Granite counter top for cabinet in foyer

## Master Stateroom

---

- “Floating” Kingsized berth
- Two “floating” nightstands with granite or marble countertops
- Bureau w/ chest of drawers at starboard side
- Hidden safe in hanging locker
- Fixed windows on hull side
- Painted floor prepared for carpet
- Custom headboard with recessed indirect lighting
- Cedarlined, twin fullheight hanging locker with automatic lighting
- Granite or marble countertop for AV cabinet in MSR

## Master Head

---

- Walnut paneling and cabinetry
- Granite or marble heated flooring in VIP & port guest
- Granite or marble countertops with china sink
- Cifial™ & Grohe™ sink faucets and Grohe™ for shower
- Seamless fiberglass stall shower w/ onepiece glass door. Industry leading seamless one piece shower stall design provides long term protection against moisture, water intrusion behind the shower panels leading to foul odors and water damage Cabinet with mirror door above sink
- Air extraction in each head shall be by low noise extraction fans
- Tecma™ toilet system throughout
- Custom bathroom fixtures
- S/S rectangular port lights w/screens
- Granite or marble countertops and back splash in heads with Cifial™ & Grohe™ faucets and bone china sink
- Fiberglass seamless stall shower w/onepiece
- glass door
- Crew quarters w/private head, shower and refrigerator

## VIP & Guest Staterooms

---

- Queen-sized berth w/ inner spring mattress
- Walnut paneling and cabinetry

- Painted floor prepared for carpet
- Drawer & luggage storage under berth
- Cedarlined hanging locker with automatic lighting
- S/S rectangular port light w/screen in port guest
- Two nightstands with granite or marble tops in port guest

---

## Crew Quarters

---

Kitchenette (microwave & refrigerator)

Walnut paneling and cabinetry

Crew quarters include one captain room & one double bunk cabin

Cedarlined hanging locker with automatic lighting

Granite or marble countertop in lounge

Storage locker

Amtico flooring

Working Bench in lieu of lower berth on crew cabin (upper still pullman berth), Custom crew layout: 1. S/S Bench top with two shelves cabins & three drawers underneath. 2. Plumbing the drain inside closet. 3. Remove built lower berth and underneath drawers replace with new working bench.

---

## VIP & Guest Heads

---

- Walnut paneling and cabinetry
- Granite or marble heated flooring in VIP & port guest
- Granite or marble countertops with china sink
- Cifial™ & Grohe™ sink faucets and Grohe™ for shower
- Seamless fiberglass stall shower w/ onepiece glass door. Industry leading seamless one piece shower stall design provides long term protection against moisture, water intrusion behind the shower panels leading to foul odors and water damage Cabinet with mirror door above sink
- Air extraction in each head shall be by low noise extraction fans
- Tecma™ toilet system throughout
- Custom bathroom fixtures
- S/S rectangular port lights w/screens
- Granite or marble countertops and back splash in heads with Cifial™ & Grohe™ faucets and bone china sink
- Fiberglass seamless stall shower w/onepiece

- glass door

---

## Hull & Bottom

---

- Black boot top stripe
- Interior structural components all bonded to hull
- Three coats of Seahawk primer, hi-build epoxy barrier coat and covered with two coats of Seahawk self polishing bottom paint
- Fiberglass rub rail w/ S/S striking plate

---

## Deck/PH

---

- White nonskid
- fiberglass decks
- Teak swim platform w/ teak steps
- Teak deck for aft deck and side walkway to midship
- S/S transom gates for pets/children protection
- Deck, superstructure and Flybridge with aluminum Ibeam reinforcements
- Swimming ladder
- Sunbrella® fabric (Daponi Sand) on outside cushions
- Custom sun pad in fore deck
- Additional watertight hatch with climb in storage chamber. Fwd of VIP and behind chain locker
- Exterior canvas covers

---

## Engines

---

- Engine alarm system, for low oil pressure and high water temperature
- S/S engine beds
- Lube oil change system for engines and generators with approximately 45gallon lube tank
- Delta T intake/ exhaust fans with variable frequency drives shall be mounted to facilitate the pushing and/or pulling of air through the machinery spaces and the providing of a high rate of air exchange. Ducts shall have fire dampers installed with manual/ automatic triggering that shall be tied into the machinery shut down circuits. Ducts in way of interior living space shall be insulated and soundproofed. System of DeltaT water separator grills used on intake and exhaust sides of system
- Underwater exhaust specifically designed for Monk/Hageman tunnels
- Stainless steel rails on side of engine and stainless steel engine mounting plates
- Stabilizer with power takeoff from both engines

---

## Steering Control

---

- Hydraulic steering system by Hynautic/Teleflex power steering system
- Steering control station with complete instrumentation
- S/S rudders w/integrated zinc plates
- Dripless seal for rudder post
- High performance computer designed and machined NiBrAl propeller Class
- "S"
- Wood steering wheel
- Maintenance free "dripless" seals for engine shaft packing glands
- Propeller shaft Aqua 22HS. 22HS is a highgrade austenitic alloy stainless steel that provides superior corrosion resistance (comparable to Aqua 22) along with excellent toughness and high strength (comparable with Aqua 17). A no compromised approach adopted by the navies around the world
- Three electrical Stidd® helm seats

---

## Generator

---

- Kohler 53KW (110V/220V@60HZ)
- Generator exhausts water-drop typer per "Centek", "Marine Exhaust Co."
- Generator set resiliently mounted and installed with sound shield

---

## Windlass/Mooring

---

- Hydraulic windlass, Maxwell® VWC4000C
- Stainless steel plow type anchor 350 lbs w/ 300ft anchor chain (1/2" HT) & chain stopper
- Integral roller and chain stopper with Maxwell® anchor winch
- Two Maxwell® VC2500 vertical electric rope winches for aft deck
- Reinforced anchor platform and anchoring system
- Chain counter

---

## Thruster/Stabilizers

---

- ABT® hydraulic bow 40HP and stern 40HP thruster with proportional control
- Custom "Two Fin" (12 sq. ft. x 2) hipformance ABT® stabilizer
- ABT® hydraulic stabilizers w/ zero speed system with upgrade Twin Kohler 53 Kw generator

---

## Mechanical - Other

---

- All engine room and machinery spaces shall be primed and top coated with polyurethane paint system.
- Kahlenberg™ triple heavyduty horn
- Fire Boy™ Fire extinguisher system with engine shutdown feature
- 3 function hydraulic retracting boom, rotation and extension)
- Hydraulic 1750lbs yacht crane (21,000ftlb
- Colorcoded piping system for easy identification
- Spare conduit running from engine room to MSR, crew, galley etc..
- MTU 1000 Service Complete including cooling systems schedule maintenance completed
- Hepworth® heavyduty commercial grade pantograph windshield wipers & washers w/ intermittent function
- Detailed stringers in engine room & lazarette
- *S/S cap on transverse stringers in central walkway*
- 2HP air compressor in engine room w/ multiple quick disconnect outlets
- Zinc anodes on hull bottom under engine room
- Humphree Fixed Plate System

---

## Fresh Water System

---

- High volume AC freshwater
- pump x2
- 2mm thickness 316 S/S water tank w/ sight gauge
- Freshwater
- outlet with hose for engines & generator
- Freshwater
- system in 120VAC and with 24VDC backup pump
- Cold freshwater
- wash down at bow, stern and boat deck
- Sea Recovery 900G/Day water maker w/auto fresh water flush operation, PH Neutralizer, UV sterilizer and Commercial Pre-filter

---

## Hot Water Heater

---

- Two 40gallon water heater with high density fiberglass insulation w/ high efficiency heating element

---

## Fuel System

---

- 4.5mm thickness 5052 Aluminum fuel tanks with sight gauges and tested to International Standards 33CFR 510(a)
- w/ high and low fuel level alarm system
- Dual Racor® fuel/water separator with Yvalves for engine & generator
- Gulfcoast™ Fuel polishing system based on US Military AbrahamsM1 Tank design
- Sight gauges for all tanks

---

## Sewage Treatment System

---

- Headhunter™ waste treatment system (50Gal/day)
- Grey water tanks for showers

---

## Bilge/Discharge

---

- Oversized drains to overboard
- Automatic bilge pumps The vessel shall be outfitted with automatic bilge pump with manual and automatic switches in each space as divided by watertight bulkheads. High water alarms will be mounted in each of these bilge zones
- High water bilge alarm at every Rule® bilge pump station
- One manual bilge pump
- Dry bilge area arrangement in center engine room

---

## Deck/Flybridge

---

- Dockside water inlet
- Both sides filler for fuel tanks with individual tank vents

---

## AC System

---

- AC outlets throughout
- Octoplex NMEA 2000 electrical control system. Based on military technology for remote activation, control and status reporting of all AC and DC breakers. Monitors all power sources (AC and DC) for voltage, frequency and amperage abnormalities and provide visual and audio alerts. Includes enhanced circuit breaker functionality with no-load indication, dimming and usage information with touch screen monitors that is user

reconfigurable. Brownout configurable control through auto load shedding is included where operator designated equipment (eg navigation and other essential systems) remains powered on while automatically switching other systems off. Octoplex NMEA 2000 Vessel system monitor system. Provides main access doors, tank level, bilge level and battery monitoring of current, voltage and temp, It is networked into NMEA 2000

- Octoplex® system AC/ DC sub panels in galley, PH, crew areas
- Additional Octoplex screen for master stateroom
- All primary AC & DC electrical wiring is appropriately labeled throughout the yacht
- GFI (110V) AC outlet with SmartLock feature for operation error protection which exceeds UL requirements
- AC duplex receptacles throughout the boat with GFI protection in dedicated areas
- 24V DC system throughout boat
- 12V DC generator starting system
- 12V & 24V DC electronic system

---

## Air Conditioning

- Cruisair® chilled water system air conditioning w/ air handlers for central air conditioner, 3 units, total 201K BTU (Reverse Cycle capable for operating down to 40)
- Electric heater coils in entire air conditioning system for operation in below 40F water
- Refrigerant type is accepted worldwide under the Montreal Protocols
- Dedicated engine room air conditioning

---

## Shore Power Connector

- Shore power receptacle 2 x 100 AMP on transom w/ 115ft cablemaster

---

## Lighting

- 24V lights in all compartments
- 24V LED lights (Aerospace quality , specially tuned color temperature for Ocean Alexander that last over 100,000+ hours)
- Marine explosionproof
- fluorescent lights in AC and DC configurations
- Convenience lights, lower deck and FB
- Flood lights at back of boat deck
- Reading lights in VIP headboard
- International navigation lights
- All staterooms, salon, dinettes and skylounge w/ indirect lighting



- ACR searchlight (RCL100D/24V) with remote in skylounge, PH
- Spreader lights under wing mast
- Four Underwater lights
- Color change light on skylounge

---

## **Inverter/Charger**

---

- Inverter Package. Upgrade 40AMP charger to Victron 5000W/120A inverter/ charger
- Victron battery charger (engine: 24V/60A, genset: 12V/25A)

---

## **Battery**

---

- Heavyduty
- batteries (house banks: 1100 AH, engine batteries: 550AH, genset batteries: 490AH)
- Battery paralleling system w/ control switch
- Service battery switch
- AGM Batteries with 40 to 140 operating temp and industry leading low self-discharge rates 1 to 3%

---

## **Bonding**

---

- Bonding system throughout
- The vessel's bonding and grounding systems shall include copper straps secured to the hull and running the full length of the vessel parallel to centerline. Engines, generators, metallic through hulls, strainers, and pump bodies shall be connected to the bonding strap using 8 AWG wire minimum or equivalent.

---

## **Furuno Navigation Package**

---

- FURUNO MFD Black Box Processors
- FURUNO 6Kw 6ft Open Array Dual Ranging Radar
- FURUNO Class B AIS Integrated into Radar and Chart Plotter
- FURUNO Digital Sounder with 1Kw B260 Broadband Transducer
- 19" Marine Monitors
- AXIS IP Camera in Engine Room and Aft Deck
- ICOM 604 VHF skylounge
- Simrad AP28 Autopilot System at skylounge
- KVH HD7 Control Panel Satellite HDTV System
- Maretron DSM250 NMEA 2000 Display skylounge, galley and MSR
- Maretron NMEA 2000 GPS, Depth Sounder and Weatherstation

- Computer Software Maxsea Times O
- UPS electrical protection for navigation computer
- Direct TV receiver with UPS

---

## Electrical - Other

---

- Marinegrade, tinned copper wiring
- Vimar™ switches and outlets
- Ritchie compass 5
- Isoboost package (100AMP+100AMP)
- N2KView Vessel and Security Monitoring Package
- Additional telephone system

---

## Audio/Visual

---

### Audio / Visual Master Stateroom

- LCD 42" TV with Professional A/V System with IR repeater (Dolby true HD DTSHD
- XM/Sirius capable w/multiEQ that
- provides virtually perfect acoustical environment for up to six individual seating locations, also detects "out of phase
- inner" auto compensable to match w/ subwoofer & speakers. HDMI 1.3 provides high bandwidth HD video output) for
- true color HD reproduction.
- One Subwoofer

### Audio / Visual SkyLounge

- LCD 42" TV with Professional A/V System with IR repeater (Dolby true HD DTSHD
- XM/Sirius capable w/multiEQ that provides virtually perfect acoustical environment for up to six individual seating locations, also detects "out of phase inner" auto compensable to match w/ subwoofer & speakers. HDMI 1.3 provides high bandwidth HD video output) for true color HD reproduction.
- MiddleAtlantic
- Media Rack for A/ V equipments (Professional Studio quality rack provides ease in accessing various
- A/V equipment. Reduces labor, damage w/ heavy duty 13gauge
- S/S and interlocking corners)
- Furman power conditioner (featuring multistage linear amplifier tech & extreme voltage shutdown for yacht's unstable shore/genset power)

## Audio / Visual Salon

- Upgraded LCD 50" TV with Professional A/V System with IR repeater (Dolby true HD DTS HD)
- XM/Sirius capable
- w/multiEQ that provides virtually perfect acoustical environment for up to six individual seating locations, also detects
- "out of phase inner" auto compensable to match w/ subwoofer & speakers. HDMI 1.3 provides high bandwidth HD
- video output) for true color HD reproduction.
- MiddleAtlantic Media Rack for A/ V equipments (Professional Studio quality rack provides ease in accessing various A/V equipment. Reduces labor, damage w/ heavy duty 13gauge
- S/S and interlocking corners) Furman power conditioner (featuring multistage linear amplifier tech & extreme voltage shutdown for yacht's unstable shore/genset power )
- One Subwoofer

## Audio / Visual Crew Quarters

- LCD 22" TV & BluRay
- disc player on Capt. & crew cabins wall
- Audio stereo and video system w/ IR repeater eye

## Audio / Visual Dinette / Aft Deck

- LCD 26" TV for dinette Galley
- LCD 22" TV on wall (Aft Deck)

## Audio / Visual VIP / Guest Stateroom

- LCD 22" TV & BluRay disc player on port wall (VIP)
- LCD 22" TV on wall and BluRay disc player (Port Guest)
- Audio stereo and video system

## Main Deck/Bridge

- 2" elliptical 316 Stainless steel handrails & stanchions, main deck 11/
- 2" on FB
-

- 316 stainlesssteel cleats and port lights
- Fiberglass stairs to boat deck from aft deck
- Elec. stainless steel sliding doors for salon
- Two teak flag poles, fore and aft.
- Teak and stainless swim ladder, foldable
- Watertight door on transom for access to engine room/ crew quarters
- Cabinet for storage wet bar refrigerator and LCD 22" TV
- Side boarding doors
- Aft deck docking control
- High bulwark w/ flushmounted
- deck lights, bulwark side doors for boarding ! Side boarding gates in aft deck and midship
- Tempered and safety glass (1/2" in fwd PH, 3/8" other areas) which is 80% stronger than normal glass and with a safety sandwich for protection against broken shards. Glass is Lowe glass which increase energy efficiency by 25%+ and is UV stabilized for reduction of fading and degradation of a yacht's interior and health of occupants due to harmful UV rays
- Humphere Interceptor
- Recessed boarding ladder on starboard gunnel

---

## Flybridge & Dinette

- Sunken and extended dash with instrumentation (Skylounge)
- Ushaped dinette (Skylounge)
- Dinette table & computer desk in main deck
- Windshield defrosters
- Phantom screen (for insects + pollen protection) with dedicated wood box for door
- Watertight doors to side deck from dinette
- Wood flooring in forward dinette
- Weather tight doors in Skylounge

---

## Skylounge

- Skylounge w/ dual hatches for ventilation and color change light
- Skylounge w/ day head & air condition and full size Stidd electric admiral series seats) x3
- White nonskid boat deck
- Cabinet including wet bar, Sub Zero™ wine cooler w/ solid panel door and storage (Skylounge)
- Wet bar w/ 24" ElectriChef™ electric barbecue on boat deck
- Boat deck sliding hatch

- Wood valance board
- Wood table x2
- Raised settee with table

---

## Salon

---

- Walnut paneling and cabinetry
- Painted floor prepared for carpet
- Cabinets port and starboard of salon
- Custom designed window mullion
- Decorative ceiling treatment
- Phantom screen (for insects + pollen protection) with dedicated wood box for door
- Sub Zero™ wine cooler
- Sub Zero™ freezer drawers

---

## Galley

---

- Walnut panel and cabinetry
- Galley storage cabinetry w/hidden hinges
- Granitecountertops
- Marble flooring
- Franke™ professional series kitchen sink w/ pull out tap
- Exhaust blower
- Overhead dish locker fwd & aft
- 27" JennAir
- electric cook top
- 24" Gaggenau™ electric oven
- SubZero
- ® Refrigerator/ freezer
- Whirlpool™ garbage disposal
- 30" JennAir Overthe
- Range Microwave with SpeedCook
- Convection oven with exhaust blower
- 24" Fisher/ Paykel™ dishwasher
- 15" Whirlpool™ trash compactor
- Seagull™ water purifier

---

## Generator Hours

---

Port 1755

Starboard 1741

## Certification

---

As - is

## Disclaimer

---

The Company offers the details of this vessel in good faith but cannot guarantee or warrant the accuracy of this information nor warrant the condition of the vessel. A buyer should instruct his agents, or his surveyors, to investigate such details as the buyer desires validated. This vessel is offered subject to prior sale, price change, or withdrawal without notice.

## Exclusions

---

Owner's personal belongings.

## Disclaimer

---

The Company offers the details of this vessel or yacht in good faith but cannot guarantee or warrant the accuracy of this information nor warrant the condition of the vessel. A buyer should instruct his representatives, agents, or his surveyors, to investigate such details as the buyer desires validated. This vessel or yacht is offered subject to prior sale, price change, or withdrawal without notice.

# PHOTOS

IMG\_3891



IMG\_3896



IMG\_3892



IMG\_3903



Wiggle Room\_Swim Platform1



Wiggle Room\_Swim Platform6



Wiggle Room\_Aft Deck8



Wiggle Room\_Aft Deck3



Wiggle Room\_Aft Deck4



Wiggle Room\_Aft Deck10





Wiggle Room\_Bow9



Wiggle Room\_Bow1



Wiggle Room\_Bow5



Wiggle Room\_Bow6



IMG\_2806



IMG\_2807



IMG\_2808



IMG\_2809



IMG\_2810



IMG\_2811



IMG\_2818



IMG\_2819





IMG\_2820



IMG\_2835



IMG\_2834



IMG\_2836



Wiggle Room\_Galley3



Wiggle Room\_Galley5



Wiggle Room\_Galley2



Wiggle Room\_Galley1



IMG\_2813



IMG\_2816



IMG\_2812



IMG\_2814





IMG\_2817



Wiggle Room\_Galley8



Wiggle Room\_Enclosed Flybridge6



Wiggle Room\_Enclosed Flybridge9



Wiggle Room\_Enclosed Flybridge10



Wiggle Room\_Enclosed Flybridge2



Wiggle Room\_Enclosed Flybridge11



Wiggle Room\_Enclosed Flybridge5



Wiggle Room\_Enclosed Flybridge3

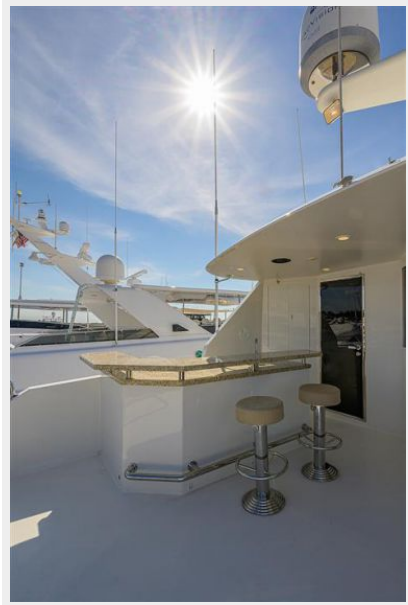


Wiggle Room\_Enclosed Flybridge Aft Deck6





## Wiggle Room\_Enclosed Flybridge Aft Deck4

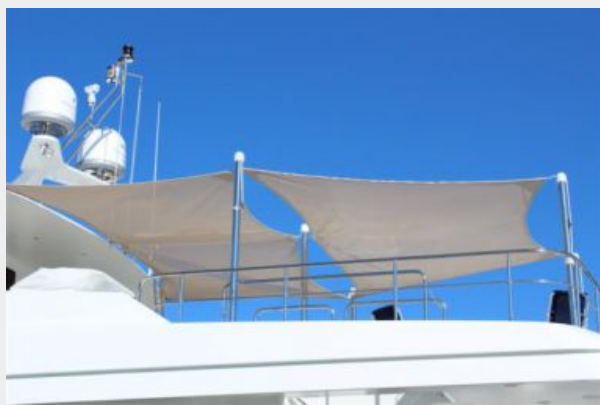


IMG\_3900

## Wiggle Room\_Enclosed Flybridge Aft Deck8



IMG\_3906



IMG\_3907



## Wiggle Room\_Master Stateroom1



**Wiggle Room\_Master Stateroom3**



**Wiggle Room\_Master Head9**



**Wiggle Room\_Master Head7**



**Wiggle Room\_Master Head6**





**Wiggle Room\_Master Head1**



**Wiggle Room\_Master Stateroom8**



**Wiggle Room\_Crew Quarters2**



**Wiggle Room\_Guest Stateroom1**



**Wiggle Room\_Guest Stateroom5**



**Wiggle Room\_Guest Head2**



**Wiggle Room\_Foward Stateroom8**

**Wiggle Room\_Foward Stateroom1**



**Wiggle Room\_Foreward Head1**



**Wiggle Room\_Crew Quarters7**



**Wiggle Room\_Crew Quarters4**

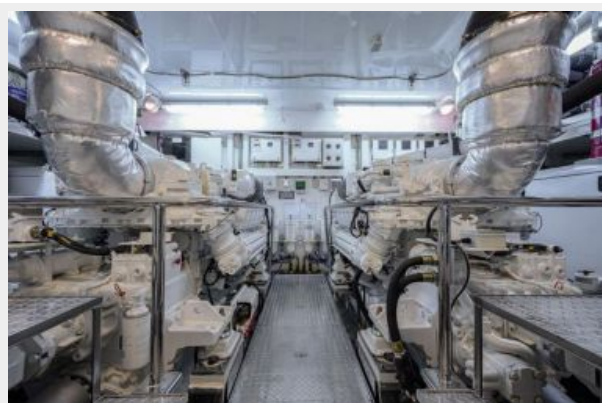


**Wiggle Room\_Crew Quarters5**





**Wiggle Room\_Engine Room1**



**Wiggle Room\_Engine Room4**



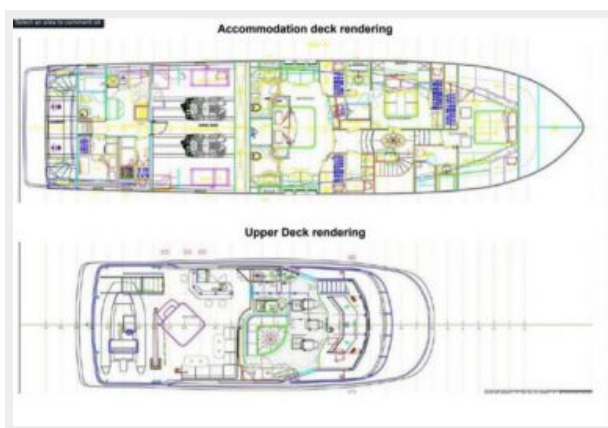
**Wiggle Room\_Engine Room7**



**IMG\_2828**



**Accommodation Deck and Upper Deck Rendering**



**Main Deck Rendering**



# CONTACTS

---

Andrey Shestakov, leading yacht broker of the sales department of Shestakov Yacht Sales Inc. Shestakov Yacht Sales Inc., the official representative of the Miami/Fort Lauderdale FL headquarters.

## Contact details

---

Email: **andrey@shestakovyachtsales.com**

Web: [shestakovyachtsales.com/en/](http://shestakovyachtsales.com/en/)

## Telephones

---

USA: **+1(954)274-4435**

## Office hours

---

Monday – Saturday: **9:00 - 21:00 EDT**

Sunday: **closed**

## Address

---



Harbour Towne Marina, 850 NE 3rd St,  
STE 213, Dania, FL 33004