

BLUE MARKER — SUNSEEKER



Builder: [SUNSEEKER](#)

Year Built: 2016

Model: Motor Yacht

Price: PRICE ON APPLICATION

Location: United States

LOA: 75' 0" (22.86m)

Beam: 18' 10" (5.74m)

Max Draft: 5' 4" (1.63m)

Cruise Speed: 21.72440605 Kts. (25 MPH)

Max Speed: 29.545192228 Kts. (34 MPH)

Our experienced yacht broker, Andrey Shestakov, will help you choose and buy a yacht that best suits your needs **Blue Marker — SUNSEEKER** from our catalogue. Presently, at Shestakov Yacht Sales Inc., we have a wide variety of yachts available on our sale's list. We also work in close contact with all the big yacht manufacturers from all over the world.

If you would like to buy a yacht **Blue Marker — SUNSEEKER** or would like help answering any questions concerning purchasing, selling or chartering a yacht, please call **+1(954)274-4435**

TABLE OF CONTENTS

TABLE OF CONTENTS	2
SPECIFICATIONS	5
Overview	5
Basic Information	5
Dimensions	5
Speed, Capacities and Weight	5
Accommodations	6
Hull and Deck Information	6
Engine Information	6
DETAILED INFORMATION	7
Fly Bridge	7
Helm Station	7
Aft Cockpit	7
Salon	7
Dining	8
Aft Master Stateroom	8
VIP Forward Stateroom	8
Starboard Guest Cabin	9
Port Guest Cabin	9
Crew Quarters - Aft	9
Main Helm Console	9
Galley	10
Deck Equipment	10
Mechanical	10
Electrical	11
Construction	11
Manufacturer Provided Description	11
Exclusions	12

Disclaimer	12
PHOTOS	13
75-2016-Sunseeker-Yacht-02	13
75-2016-Sunseeker-Yacht-01	13
75-2016-Sunseeker-Yacht-03	13
75-2016-Sunseeker-Yacht-04	13
75-2016-Sunseeker-Yacht-05	13
75-2016-Sunseeker-Yacht-06	13
75-2016-Sunseeker-Yacht-07	14
75-2016-Sunseeker-Yacht-08	14
75-2016-Sunseeker-Yacht-09	14
75-2016-Sunseeker-Yacht-10	14
75-2016-Sunseeker-Yacht-11	14
75-2016-Sunseeker-Yacht-12	14
75-2016-Sunseeker-Yacht-13	15
75-2016-Sunseeker-Yacht-14	15
75-2016-Sunseeker-Yacht-15	15
75-2016-Sunseeker-Yacht-16	15
75-2016-Sunseeker-Yacht-17	15
75-2016-Sunseeker-Yacht-18	15
75-2016-Sunseeker-Yacht-19	16
75-2016-Sunseeker-Yacht-20	16
75-2016-Sunseeker-Yacht-21	16
75-2016-Sunseeker-Yacht-22	16
CONTACTS	17
Contact details	17
Telephones	17
Office hours	17
Address	17

SPECIFICATIONS

Overview

Classic styling combines with state of the art technology to produce this handsome 75' Sunseeker.

- Luxury accommodations in 4 en suite staterooms
- Twin MAN V12's @1550 hp each
- Satin finish White Oak joinery
- Sleipner Fin Stabilization
- Simrad Nav Electronics
- Many Custom Upgrades

Basic Information

Category: Motor Yacht

Model Year: 2016

Year Built: 2016

Country: United States

Registration #: 81935-3589238

Dimensions

LOA: 75' 0" (22.86m)

Beam: 18' 10" (5.74m)

Max Draft: 5' 4" (1.63m)

Speed, Capacities and Weight

Cruise Speed: 21.72440605 Kts. (25 MPH) **Max Speed:** 29.545192228 Kts. (34 MPH)

Water Capacity: 317 Gallons

Holding Tank: 49 Gallons

Fuel Capacity: 1321 Gallons

Accommodations

Total Cabins: 2

Total Heads: 4

Hull and Deck Information

Hull Material: Fiberglass

Hull Configuration: Deep Vee

Engine Information

Engines: 2

Manufacturer: MAN

Engine Type: Inboard

Fuel Type: Diesel

DETAILED INFORMATION

Fly Bridge

- Teak Deck
- Hard Top w/retractable canvas sun roof
- Large U-settee w/teak top pedestal table
- Sun pads
- 4 x Sonance speakers
- Wet Bar w/Ceramic BBQ grill, Victrofrigo Icemaker, Waeco Coolmatic refrigerator, Coolbox

Helm Station

- Simrad IS40 Speed/Depth
- Simrad Autopilot
- 2 X Simrad touch screen Chart Plotter display
- Simrad RS90 VHF w/DSC function
- Xenta Smart-stick docking system

Aft Cockpit

- Teak deck
- Molded staircase to flybridge
- Side bar unit with ice maker and cool box
- Stern seating
- Stern safety gates
- Engine room access hatch
- 2 x stern capstan winches and fairleads
- Xenta Smart Stick aft docking station
- 4 x Sonance speakers
- 24v Overhead cockpit lights
- 24v Low-level courtesy lights aft cockpit
- Canvas enclosure w/isinglass windows

Salon

- Flush stainless steel glazed sliding door to aft cockpit
- Satin finish White Oak w/gloss finish Wenge accents and Carodin Wenge sole
- Tropic Spec A/C
- 55" Samsung TV

- Bose Surround Sound system/Pioneer Blu-Ray Player
- L-settee w/Ottoman (S)
- Settee (P)
- Coffee Table
- 24v LED overhead lighting

Dining

- Large dining area with Wenge top dining table, outboard bench seating plus 5 chairs
- Bar cabinet with 8 champagne flutes and 8 whisky glasses
- U-Line wine cooler
- Access stairs to the lower decks

Aft Master Stateroom

- Panoramic windows with opening ports and blinds
- Queen berth w/storage below
- 2 x Night Stands
- B & R Carlton tub chair
- Drawer Storage
- 24v LED overhead lights
- 2 x 24v reading lights
- 55" Samsung TV
- Harmon Kardon Blu-Ray Cinema Surround Sound
- Large Walk-in closet
- En Suite head and shower

VIP Forward Stateroom

- Centerline Queen berth w/storage below
- Hanging locker
- Dressing table with mirror and stool
- 24v LED overhead lights
- 2 x 24v reading lights
- 2 x panoramic windows with opening ports and blinds
- Deck hatch with screen
- 40" Samsung TV
- Fusion Radio/CD/DVD player
- En Suite head and shower

Starboard Guest Cabin

- Double berth w/storage below
- 2 x Nightstands
- 2 x 24v reading lights
- Hanging locker w/mirrored door
- Opening porthole w/screen and blinds
- 32" Samsung TV
- Fusion Radio/CD/DVD player
- En Suite head w/shower

Port Guest Cabin

- Twin berths w/storage below
- 2 x 24v reading lights
- 22" Samsung TV
- Fusion Radio/CD/DVD player
- Hanging locker w/mirror
- Opening porthole w/screen and blinds
- En Suite head w/shower

Crew Quarters - Aft

- Twin berths w/storage below
- Vitrefrigo Refrigerator & Vitrefrigo Freezer below forward berths
- 22" Samsung TV
- Fusion Radio/CD/DVD player
- Miele Washer & Dryer (separate units)

Main Helm Console

- Port-side observation seating
- Upholstered helm chairs
- Hydraulic power steering
- Simrad IS40 Speed/Depth
- Simrad AC12 Autopilot system
- 2 x 19" Simrad Chartplotter/Radar/GPS
- Simrad RS90 VHF Radio w/DSC
- Simrad AIS Module w/GPS.
- Simrad Go-Free wireless bridge
- Xenta Smart Stick docking system

- Engine instrumentation
- Touch screen monitoring panel
- Rudder indicator
- Jabsco Searchlight
- Trim tab controls
- Compass
- Dual Trumpet Kahlenburg Horn
- Hand-held fire extinguisher
- Side opening door to side deck

Galley

- Subzero Refrigerator/Freezer w/Icemaker
- Plastimo 4 burner ceramic cooktop
- Bosch Exhaust fan
- Sharp Microwave oven
- Miele dishwasher
- Stainless steel sink w/hot and cold water
- 8 place settings: china and flatware
- 2 x double AC sockets
- Hand-held fire extinguisher

Deck Equipment

- Double sized Stainless steel bow plate
- 50 kg Stainless Steel Delta anchor and 90m chain
- Lewmar 24v bow winch and capstan with deck, cockpit and flybridge controls
- Teak decking-Foredeck, side deck, swim platform, aft deck & fly bridge
- 16 x LED side deck lights (8 per side)
- 10 x Lumishore, white underwater lights
- Stern docking light
- Foredeck storage lockers
- Foredeck seating and sunpad w/folding back rests
- 2 x Foredeck Sonance speakers
- Fresh water wash down outlets (fore & aft)
- Hydraulic passerelle
- Hydraulic lift platform
- Swim Ladder
- Hand held swim shower

Mechanical

- Twin MAN V12's @1550 hp each
- 2 x 29kW Onan generators
- Sleipner hydraulic fin stabilizers
- Hydraulic Bow & Stern thrusters w/simultaneous dual proportional controls
- Idromar Watermaker @130 liters/hr
- Tropic Spec Air-conditioning
- Separate fuel filters/water separators
- Automatic fire extinguishers
- Engine room and forward bilge flood alarms
- Automatic bilge pumps
- Automatic flood pumps
- 4 x 24v extractor fans
- Manual bilge pump

Electrical

- 2 x 29kW Onan generators
- Galvanic isolator
- 24v and 12v electrical system with full circuit breaker protection
- 8 x 24v engine batteries
- 8 x 24v domestic batteries
- 4 x 12v generator batteries
- 24v Battery charger
- 12v Battery charger
- AC Water heater

Construction

- Hand-laid GRP
- Gel coat including stripes
- Vinylester skin coat with powderbound mat
- Stitched multi-axial reinforced single-skin bottom
- Balsa-cored hull topsides
- Cored deck and superstructure
- Hull stiffened with longitudinal stringers supported by transverse bulkheads and floors

Manufacturer Provided Description

A fusion of style and sophistication, the Sunseeker 75 Yacht will never fail to disappoint. Over three spacious decks, both modern and classic design blend harmoniously to exceed even the highest of expectations.

On the main deck, signature 'z' shaped windows allow plenty of natural light to illuminate both the dining and separate seating areas. Below deck, three double suites, plus twin bed guest cabin comfortably accommodate up to eight guests. Outside, the vast outdoor playground was made for entertaining. Complete with wetbar, sunpads and dining area, it's the perfect space for relaxing in a secluded bay or enjoying the thrill of travelling along the coastline at 34 knots - proving that sometimes, you can have it all.

Exclusions

Owner's personal belongings.

Disclaimer

The Company offers the details of this vessel or yacht in good faith but cannot guarantee or warrant the accuracy of this information nor warrant the condition of the vessel. A buyer should instruct his representatives, agents, or his surveyors, to investigate such details as the buyer desires validated. This vessel or yacht is offered subject to prior sale, price change, or withdrawal without notice.

PHOTOS

75-2016-Sunseeker-Yacht-01



75-2016-Sunseeker-Yacht-02



75-2016-Sunseeker-Yacht-03



75-2016-Sunseeker-Yacht-04



75-2016-Sunseeker-Yacht-05



75-2016-Sunseeker-Yacht-06



75-2016-Sunseeker-Yacht-07



75-2016-Sunseeker-Yacht-08



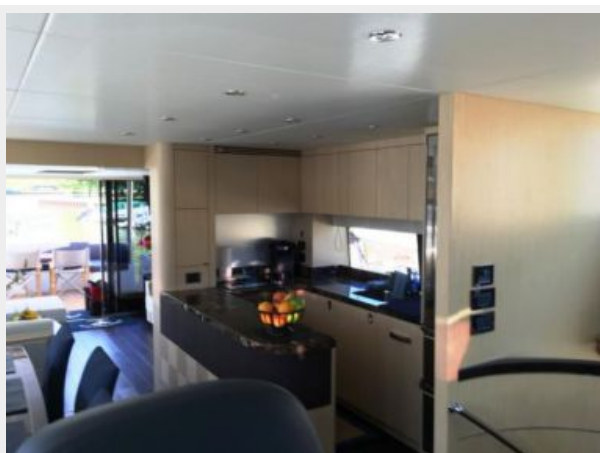
75-2016-Sunseeker-Yacht-09



75-2016-Sunseeker-Yacht-10



75-2016-Sunseeker-Yacht-11



75-2016-Sunseeker-Yacht-12



75-2016-Sunseeker-Yacht-13



75-2016-Sunseeker-Yacht-14



75-2016-Sunseeker-Yacht-15



75-2016-Sunseeker-Yacht-16



75-2016-Sunseeker-Yacht-17



75-2016-Sunseeker-Yacht-18



75-2016-Sunseeker-Yacht-19



75-2016-Sunseeker-Yacht-20



75-2016-Sunseeker-Yacht-21



75-2016-Sunseeker-Yacht-22



CONTACTS

Andrey Shestakov, leading yacht broker of the sales department of Shestakov Yacht Sales Inc. Shestakov Yacht Sales Inc., the official representative of the Miami/Fort Lauderdale FL headquarters.

Contact details

Email: andrey@shestakovyachtsales.com

Web: shestakovyachtsales.com/en/

Telephones

USA: +1(954)274-4435

Office hours

Monday – Saturday: **9:00 - 21:00** EDT

Sunday: **closed**

Address



Harbour Towne Marina, 850 NE 3rd St,
STE 213, Dania, FL 33004