

2016 50' AZIMUT — AZIMUT



Builder: [AZIMUT](#)

Year Built: 2016

Model: Motor Yacht

Price: PRICE ON APPLICATION

Location: Mexico

LOA: 50' 0" (15.24m)

Beam: 15' 3" (4.65m)

Max Draft: 4' 11" (1.50m)

Cruise Speed: 26 Kts. (30 MPH)

Max Speed: 32 Kts. (37 MPH)

Our experienced yacht broker, Andrey Shestakov, will help you choose and buy a yacht that best suits your needs 2016 50' Azimut — AZIMUT from our catalogue. Presently, at Shestakov Yacht Sales Inc., we have a wide variety of yachts available on our sale's list. We also work in close contact with all the big yacht manufacturers from all over the world.

If you would like to buy a yacht 2016 50' Azimut — AZIMUT or would like help answering any questions concerning purchasing, selling or chartering a yacht, please call +1(954)274-4435

TABLE OF CONTENTS

TABLE OF CONTENTS	2
SPECIFICATIONS	4
Overview	4
Basic Information	4
Dimensions	4
Speed, Capacities and Weight	4
Accommodations	4
Hull and Deck Information	4
Engine Information	5
DETAILED INFORMATION	6
Additional Specs, Equipment and Information:	6
Disclaimer	10
Exclusions	10
Disclaimer	10
PHOTOS	11
IMAG1594	11
20171118_171152	11
IMAG1593	11
IMAG1595	11
IMAG1596	11
IMAG1597	11
IMAG1598	12
IMAG1603	12
IMAG1599	12
IMAG1602	12
IMAG1601	12
IMAG1600	12
IMAG1604	13

IMAG1605	13
IMAG1606	13
IMAG1607	13
IMAG1609	13
IMAG1608	13
IMAG1592	14
CONTACTS	15
Contact details	15
Telephones	15
Office hours	15
Address	15

SPECIFICATIONS

Overview

This 2016 Azimut 50 Flybridge is in pristine condition. With a 3 cabin layout and full beam master, she has a comfortable layout for accommodating guests.

Basic Information

Category: Motor Yacht

Model Year: 2016

Year Built: 2016

Country: Mexico

Fly Bridge: Yes

Cockpit: Yes

Dimensions

LOA: 50' 0" (15.24m)

Beam: 15' 3" (4.65m)

Max Draft: 4' 11" (1.50m)

Speed, Capacities and Weight

Cruise Speed: 26 Kts. (30 MPH)

Max Speed: 32 Kts. (37 MPH)

Displacement: 46120 Pounds

Water Capacity: 156 Gallons

Fuel Capacity: 555 Gallons

Accommodations

Total Cabins: 2

Total Heads: 2

Hull and Deck Information

Hull Material: Fiberglass

Engine Information

Engines: 2

Manufacturer: Volvo Penta

Engine Type: Inboard

Fuel Type: Diesel

DETAILED INFORMATION

Additional Specs, Equipment and Information:

Electronics

- Radar
- TV set
- Autopilot
- CD player
- Depth-sounder
- VHF
- Plotter
- Radio
- Navigation center
- DVD player
- Cockpit speakers
- GPS
- Compass
- Repeater(s)

Inside Equipment

- Battery charger
- Hot water
- Heating
- Manual bilge pump
- Air conditioning
- Microwave oven
- Refrigerator
- Electric head
- Bow thruster
- Electric bilge pump
- Deep freezer

Electrical Equipment

- Generator (20 kw)
- Shore power inlet
- Inverter
- Electrical Circuit: 110V

Outside Equipment/Extras

- Cockpit table
- Liferaft
- Cockpit shower
- Cockpit cushions
- Swimming ladder
- Teak cockpit
- Electric windlass

Additional Information

Enhanced Options - Exterior:

- Xenta Joystick control Lower Helm and Upper Helm
- Fiberglass Hardtop
- Hydraulic Swim Platform with Teak Deck
- Flybridge furniture at the aft area of the Fly area
- Sun pads in bow section
- Flybridge entertainment area with wet bar (Grill + Sink + Refrigerator)
- Crew Cabin with Air Conditioning and Head
- Cockpit Refrigerator (Drawer-Type Refrigerator)
- Oskar Cockpit Chairs
- Teak Laid Deck on swim platform, aft cockpit and stair to fly
- LED lighting (all dimmed, inside and outside)
- Underwater lights
- Canvas for all section of the yachts
- Oil change system

Enhanced Options - Interior:

- Wooden Floor in Salon and Dinette
- Sofa Bed in the Salon
- Miele Appliances (Convection/Microwave and Cooktop)
- BOSE Hifi system in all rooms
- TV in each stateroom and salon (hi-lo) with Bose lifestyle surround sound
- Flybridge speakers

Salon

- Wooden Flooring
- Wooden Cupboards
- C-Shaped Sofa to Starboard
- Roman Blinds for Stern Windows and Sliding Blind Aft Door
- TV
- Bose Surround Sound Speakers
- Dinette to Port across from Lower Helm

Galley

- Galley Top and Floor
- Port Side Down Stairs
- Great Access to Staterooms
- MIELE Appliances
- Ceramic Glass Range with 4 Burners
- Overhead Extraction Fan Hood
- Refrigerator / Freezer
- Microwave Oven
- Stainless Steel Sink

Master Stateroom and Head - Midship

- Queen Sized Bed – Center Lined
- Wardrobe with shelves
- Hanging Wardrobe to Port
- Vanity with mirror
- 2 bedside tables
- Cabinets with door and shelves on both sides
- 2 portlights
- Private access to En-Suite head
- Metal Venetian blinds
- Fabric wall upholstery and wood paneling
- Flat Screen TV system

Master Head:

- Located forward of the owner's cabin, on starboard side
- Private Access from owner's stateroom
- GRP top and cognac (brown) Washbasin
- Separate shower enclosure
- TECMA toilet
- Wall unit with 1 openable door next to washbasin top and under-cabinet with shelves
- Spotlights
- 1 Portlight
- Metal Venetian blinds
- Non-slip GRP flooring in shower
- Head air extractor

VIP Stateroom - Forward

- Located Forward towards the Bow
- Double Center Line Bed with large locker underneath
- Wooden headboard
- Hanging wardrobe Closet to Starboard

- Wardrobe Closet to Port
- Direct access to guest head
- Mirror inside wardrobe
- 2 wall unit with 2 storage areas over windows Port and Starboard
- Escape Exit in ceiling through concealed hatchway to Exterior Sunbed Area
- 2 openable round portlights inserted in windows
- Air conditioning system control panel
- Metal Venetian blinds
- Fabric-upholstered bulwarks and Head Linings

Guest Stateroom - Starboard

- 2 Guest Beds
- 1 bedside table next to beds
- Wardrobe Closet with coat rack and shelves
- Lockers under bed
- Openable round portlight
- Metal Venetian blinds
- Carpeted floor
- Separate AC control panel
- Spotlights
- Access to head leading to corridor

VIP/Guest Head

- Located portside next to VIP Stateroom
- Washbasin with GRP top
- Separate shower enclosure with glass door
- Under basin cabinet with shelves
- Direct access from the VIP cabin or from the corridor
- GRP top Brown colored Washbasin
- TECMA toilet
- Chromed shower rail
- Spotlights
- Metal blinds
- Non-slip GRP flooring in shower
- Head air extractor
- Openable round portlight

Crew Cabin and Head - Aft

- Located Aft under Seating in Aft Deck
- Access from cockpit bench
- Single bed with under-bed compartments
- 1 wall unit

- 1 wardrobe
- 1 head cabinet
- Fabric bulwark upholstery
- GRP ceiling and upholstered panels
- Bulwark shelves, 1 at the foot of the bed, 1 over the rudder hold
- Openable round portlight over cockpit bench
- GRP non-slip floor
- Spotlights
- Fabric blind

Crew Head:

- TECMA toilet
- White resin washbasin
- Chrome mixer with extractable shower head
- Shower area with waterproof curtain
- Wall unit with mirror
- Under sink door
- Power socket
- Head accessories

Disclaimer

The Company offers the details of this vessel in good faith but cannot guarantee or warrant the accuracy of this information nor warrant the condition of the vessel. A buyer should instruct his agents, or his surveyors, to investigate such details as the buyer desires validated. This vessel is offered subject to prior sale, price change, or withdrawal without notice.

Exclusions

Owner's personal belongings.

Disclaimer

The Company offers the details of this vessel or yacht in good faith but cannot guarantee or warrant the accuracy of this information nor warrant the condition of the vessel. A buyer should instruct his representatives, agents, or his surveyors, to investigate such details as the buyer desires validated. This vessel or yacht is offered subject to prior sale, price change, or withdrawal without notice.

PHOTOS

20171118_171152



IMAG1594



IMAG1593



IMAG1595



IMAG1596



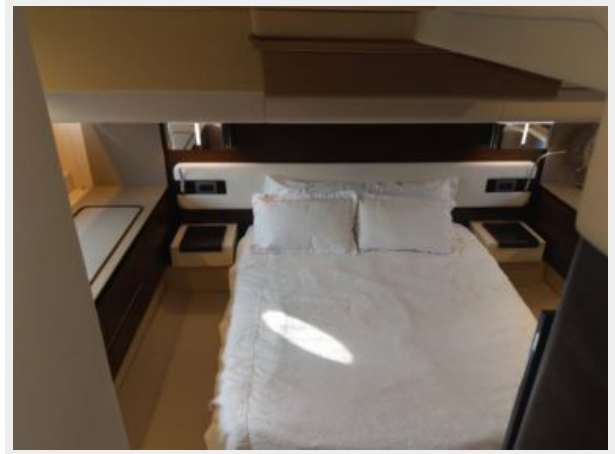
IMAG1597



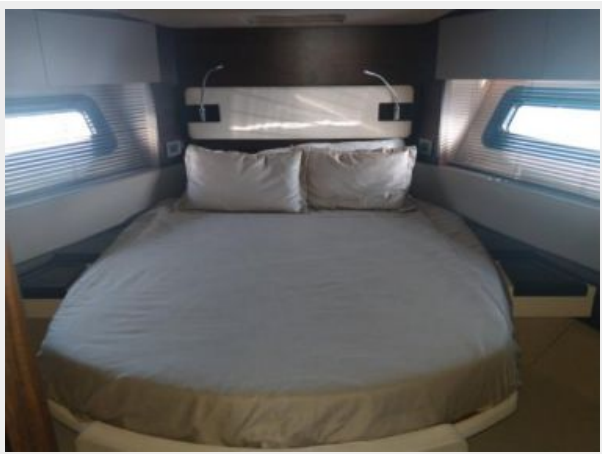
IMAG1598



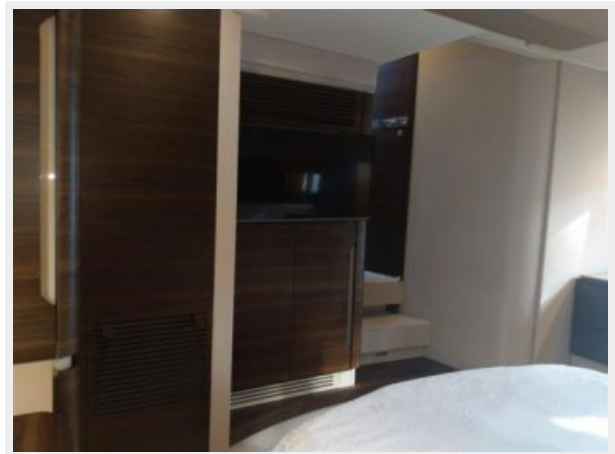
IMAG1603



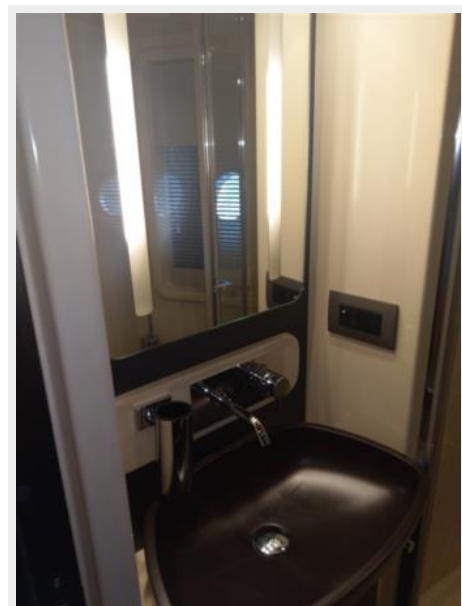
IMAG1599



IMAG1602



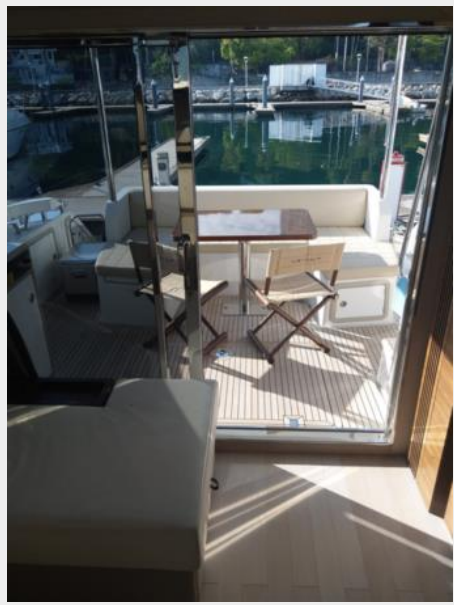
IMAG1601



IMAG1600



IMAG1604



IMAG1605



IMAG1606



IMAG1607



IMAG1609



IMAG1608



IMAG1592



CONTACTS

Andrey Shestakov, leading yacht broker of the sales department of Shestakov Yacht Sales Inc. Shestakov Yacht Sales Inc., the official representative of the Miami/Fort Lauderdale FL headquarters.

Contact details

Email: andrey@shestakovyachtsales.com

Web: shestakovyachtsales.com/en/

Telephones

USA: +1(954)274-4435

Office hours

Monday – Saturday: **9:00 - 21:00** EDT

Sunday: **closed**

Address



Harbour Towne Marina, 850 NE 3rd St,
STE 213, Dania, FL 33004