

EL LIBRE — HUNTER



Судостроитель: HUNTER

Год постройки: 1994

Модель: Center Cockpit

Цена: **ЦЕНА ЯХТЫ ПО ЗАПРОСУ**

Местонахождение: United States

Длина общая: 42' 1" (12.83m)

Ширина: 14' 3" (4.34m)

Мин. осадка: 5' 0" (1.52m)

Купить **El Libre — HUNTER** а также выбрать подходящую вам яхту из нашего каталога яхт вам поможет опытный яхтенный брокер Андрей Шестаков. На сегодняшний день компания **Shestakov Yacht Sales Inc.** имеет большое количество яхт в собственном списке продаж, а также тесно сотрудничает со всеми крупными яхтенными производителями по всему миру.

Для того чтобы купить яхту **El Libre — HUNTER** а также проконсультироваться по любому вопросу связанному с покупкой, продажей, чартером яхт позвоните по телефону **+7(918)465-66-44**.

ОГЛАВЛЕНИЕ

ОГЛАВЛЕНИЕ	2
ХАРАКТЕРИСТИКИ	7
Обзор	7
Основная информация	7
Размеры	7
Скорость, вместимость и масса	8
Размещение	8
Корпус и палуба	8
Информация о двигателе	8
ПОДРОБНОЕ ОПИСАНИЕ	9
DESCRIPTION	9
UPGRADES	11
Исключения	13
Отказ от ответственности	13
ФОТОГРАФИИ	14
EL LIBRE (3)	14
EL LIBRE 1 (2)	14
WING ON WING	14
EL LIBRE JIB FURLER 1	14
EL LIBRE JIB FURLER	15
MAIN SAIL	15
EL LIBRE BOOM	15
MAIN WINCH	15
MAST	16
WIND GENERATOR	16
EL LIBRE GAS CONTAINERS AND GRILL W-SOLAR	16
EL LIBRE ANCHOR WINCH	16
RADAR WITH ARCH	17

EL LIBRE- Raymarine hybridtouch-1	17
EL LIBRE- Raymarine hybridtouch-2	17
EL LIBRE- Raymarine hybridtouch-3	17
P70	17
EL LIBRE- Raymarine hybridtouch-4	17
ST60	18
EL LIBRE I 70S	18
EL LIBRE COCKPIT EQUIPMENT	18
EL LIBRE COCKPIT	18
EL LIBRE ENGINE YANMAR 4JH2TE	18
EL LIBRE ENGINE 1	18
EL LIBRE ENGINE 2	19
EL LIBRE ENGINE 3	19
EL LIBRE BATTERY LOCKER 1	19
EL LIBRE ENGINE HRS	19
EL LIBRE GENERATOR KOHLER 9 KW	20
EL LIBRE BATTERIES	20
NAV STATION	20
EL LIBRE GENERATOR 1	20
GENERATOR DATA PLATE 1	20
GENERATOR DATA PLATE	20
GENERATOR HOURS	21
NAV TABLE	21
NAV STATION SHELF	21
NAV STATION LOCKER	21
EL LIBRE LOCKER OPEN	22
POWER CONTOR PANEL	22
EL LIBRE INVERTER MANUEL	22
EL LIBRE INVERTER PAGE	22

LOCKER SHELVES	23
LOCKERS OPEN	23
LOCKERS & PARTS STORAGE	23
IMG_3205	23
EL LIBRE GALLEY 2	24
EL LIBRE GALLEY STORAGE 1	24
REFIG- FREEZOR	24
EL LIBRE FLOOR AND DRAWS	24
REFIG-FREEZ OPEN	25
REFIG-FREEZ OPEN 2	25
REFIG-FREEZ OPEN 1	25
REFIG	25
STAINLESS SINK	25
UNDER SINK STORAGE	25
EL LIBRE FORCE 10 OVEN 1	26
OVER COUNTER STORAGE	26
REFIG-FREEZ OPEN	26
EL LIBRE GALLEY FLOOR	26
EL LIBRE GALLEY STORAGE	26
SALOON FLOOR	26
EL LIBRE COMPANION WAY STEPS	27
MASTER CABIN	27
MASTER CABIN STORAGE	27
MASTER CABIN SHELF AND STORAGE 1	27
MASTER CABIN HEAD	28
MASTER CABIN SHELF AND STORAGE	28
MASTER CABIN BATH-SHOWER	28
IMG_3207	28
Guest Cabin 6	29

Guest Cabin 1	29
Guest Cabin and drawers	29
Guest Cabin and drawers 1	29
Guest Cabin LOCKER 1	29
Guest Cabin LOCKER SHELVES	29
Guest Cabin LOCKER 2	30
Guest Cabin HEAD 2	30
Guest Cabin 7	30
Guest Cabin STORAGE 1	30
Guest Cabin STORAGE 2	31
Guest Cabin STORAGE	31
Guest Cabin W-WATER STORAGE COMPARTMENTS	31
Guest Cabin HATCH	31
Guest Cabin SINK AND STORAGE	32
Guest Cabin Head	32
Guest Cabin HEAD 4	32
Guest Cabin SINK 1	32
Guest Cabin SHOWER	33
Guest Cabin HEAD 1	33
EL LIBRE BATTERY LOCKER	33
EL LIBRE MAST	33
IMG_3201	34
IMG_3202	34
IMG_3203	34
IMG_3204	34
КОНТАКТЫ	35
Контактная информация	35
Телефоны	35
Время работы	35

Адрес

35

ХАРАКТЕРИСТИКИ

Обзор

The Passage 42 is extremely comfortable. Tan Ultrasuede fabrics, hand rubbed teak, teak and holly sole and Corian counters provide the warm, friendly atmosphere, while her 14' beam gives the spaciousness you need. The incredible salon with its cherry wood finish is perfect for dining in or entertaining the crew. The 16,000 BTU forward a/c unit was replaced 7/14 and the aft a/c unit was replaced in 2017. Any cook will appreciate the layout of the fully equipped galley with large fridge, separate freezer (Adler Barber). The 3 burner Force 10 stove with oven was new in March 2014 when she was converted to propane with new tank and solenoid. A 750 watt microwave completes the fully equipped galley. Privacy is important for extended cruising with a family or guests and the Hunter 42 with its two stateroom, two head design keeps it that way. The standing room master stateroom offers a queen size walk around berth with custom innerspring mattress new in 2014, incredible storage and hanging lockers, plus a full head complete with a shower/tub and electric macerating toilet. New port lights and hatches were installed 7/14. Your family or friends will not feel slighted in the forward guest quarters with plenty of storage and private access to the head with electric macerating toilet. The full size berth, desk vanity, and adjoining head will be a comfortable refuge after a great day at sea. Float switches were added to operate both shower drain pumps. On those days when the weather is less than perfect... No problem, simply turn on the reverse cycle heat or air conditioning via shore power or generator. If your plans call for comfort and your destinations are far, take a closer look at this Hunter Passage 42.

Основная информация

Тип судна: Center Cockpit

Подкатегория: Крейсерская яхта

Модельный год: 1995

Год постройки: 1994

Страна: United States

Номер регистрации в береговой охране: 1038182

Размеры

Длина общая: 42' 1" (12.83m)

Длина по ватерлинии: 36' 0" (10.97m)

Ширина: 14' 3" (4.34m)

Мин. осадка: 5' 0" (1.52m)

Трапы: 62' 0" (18.90m)

Скорость, вместимость и масса

Водоизмещение: 20500 Pounds

Чистый вес: 22 Pounds

Вместимость воды: 150 Gallons

Вместимость сточного бака: 29 Gallons

Объем топливного бака: 72 Gallons

Размещение

Всего кают: 2

Корпус и палуба

Материал корпуса: Fiberglass

Информация о двигателе

Двигатели: 1

Производитель: Yanmar

ПОДРОБНОЕ ОПИСАНИЕ

DESCRIPTION

Below, the Passage 42 is extremely comfortable. Tan Ultrasuede fabrics, hand rubbed teak, teak and holly sole and Corian counters provide the warm, friendly atmosphere, while her 14' beam gives the spaciousness you need. The incredible salon with its cherry wood finish is perfect for dining in or entertaining the crew. The 16,000 BTU forward a/c unit was replaced 7/14 and the aft a/c unit was replaced in 2017.

Any cook will appreciate the layout of the fully equipped galley with large fridge, separate freezer (Adler Barber). The 3 burner Force 10 stove with oven was new in March 2014 when she was converted to propane with new tank and solenoid. A 750 watt microwave completes the fully equipped galley. Privacy is important for extended cruising with a family or guests and the Hunter 42 with its two stateroom, two head design keeps it that way. The standing room master stateroom offers a queen size walk around berth with custom innerspring mattress new in 2014, incredible storage and hanging lockers, plus a full head complete with a shower/tub and electric macerating toilet. New port lights and hatches were installed 7/14. Your family or friends will not feel slighted in the forward guest quarters with plenty of storage and private access to the head with electric macerating toilet. The full size berth, desk vanity, and adjoining head will be a comfortable refuge after a great day at sea. Float switches were added to operate both shower drain pumps. On those days when the weather is less than perfect....No problem, simply turn on the reverse cycle heat or air conditioning via shore power or generator. If your plans call for comfort and your destinations are far, take a closer look at this Hunter Passage 42.

Engine:

Engine Brand: Yanmar Year Built: 1995 Engine Type: Inboard Engine/Fuel Type: Diesel Engine Hours: 1229 Drive Type: Direct Drive Engine Power: 67 HP TURBO

Tanks:

Fresh Water Tanks: 2 Tanks 85 and 65 (150 Gallons) Fuel Tanks: 1 (72 Gallons) Holding Tanks: 1 (29 Gallons), New 2014

All sanitary lines replaced in 2017.

Accommodations:

Number of double berths: 2 Number of cabins: 2 Number of heads: 2

Galley:

Corian countertops Double stainless steel sinks Hot/Cold pressurized water system with two tanks

for 150 gallons of water
Adler Barber refrigeration system compressor rebuilt and new electronics
4/15 Refrigerator both top and side loading maintains 36-42F
Large freezer maintains below 0 F, keeps ice, even ice cream
3 burner Force 10 propane stove with oven
Propane detector new
Spring 2015
Microwave
Sony Bluetooth Marine Series Sound System with JL Audio m600/6
Marine Amp

Engine and Mechanical

Inside Equipment:

Electric head
Refrigerator
Microwave oven
Air conditioning 2 UNITS 10000 BTU & 16000 BTU
Deep freezer

Electrical Equipment:

Generator 9KW
Inverter
Shore power inlet

Electronics:

P70S Autopilot CONTROL W/EV400
I70S MULTI FUNCTION DISPLAY (2)
E 127 MFD
CHART PLOTTER
I60 WIND METER

Sails & Sail Handling:

Furling genoa, 135 Doyle
Furling mainsail, Doyle
B & R rig used (backstay present unlike many other Hunters)
LEWMAR 42, 2 speed ST halyard winch port
LEWMAR 44, 2 speed ST main sheet and halyard winch starboard
Two primary LEWMAR 50 2 speed primary winches-both self-tailing
All sail handling lines led to cockpit
Jib Inhaul, main Inhaul, main halyard, jib halyard new 2014
Outhaul replaced 5/15
Standing rigging replaced 2014, all Norseman Mechanical

Hull and Deck:

Full Bimini cockpit enclosure with 4mm Stratoglass & Screens-new 2013
Stratoglass and screens/shades roll up separately
All Nav Instruments Mounted At Wheel.
Teak Cockpit Table for 4.
Thru hulls for cockpit drains replaced 3/15
Thru Hulls for Engine and Generator replaced 3/15
CQR Anchor Electric anchor windlass below deck
New v-berth hatch 2014
Double stainless steel lifelines, 2015
Custom SS heavy duty dinghy davits
Magma grill mounted aft
Running Deck Lights and Mast lights replaced with LED lights

Electronics:
Raymarine E 127 MFD.
RAYMARINE I-60 Wind
Raymarine I70S MULTI FUNCTION INST (2): 1 at helm, 1 at NAV station) .
Raymarine P70S Autopilot Control
RAYMARINE EVOLUTION EV-400 Autopilot compass.
VHF at helm and in salon.
Raymarine RD418HD COLOR RADAR

Electrical:

Kohler Generator 9kw (761 hours)

House batteries 4-125+, 480amps (new 5/18)12v Start battery 400 watt Solar Panel with InterfaceMarine Kinitex Wind Generator with Sound Dampening pole.Freedom 2500 watt inverter/ 130amp charger will operate all outletsDual 30 amp shore power circuits (2) 50' Shore power cords 30 amp with Smart PlugsSplitter 50amp/30 amp12v/110v ServiceNew Galvanic isolator 8/14Tricolor on mast LIGHT

NOTE: Pre-plumbed for installation of a washer/dryer combo, (not included).

Electric windlass

Thru hulls for Engine, Generator, scuppers replaced 3/15All new hoses for engine, generator, and scuppers 2014Electric Bilge pump3 bladed prop replaced 3/2017

Exclusions:

The following items are excluded from sale:Owner's personal items

UPGRADES

EL LIBRE UPGRADES:

2014:

Installed New Standing Rigging.

All new hoses for engine, generator, and scuppers.

Added Additional Shelving and storage throughout.

2015:

Thru hulls for Engine, Generator, scuppers replaced.

Adler Barber refrigeration system compressor rebuilt.

Added New Freezer Electronics module.

2017:

Reinstalled 400 watt solar panel with interface (N-Power).

Reinstalled wind generator with Interface Marine Kinetix 3phase.

Replaced glass in 2 small hatches forward and large hatch in rear.

Replaced water pump for AC Units

Replace Shower Bilge with Whale.

Installed overhead LED lights through boat.

Replaced Cafrano fans.

NEW Whale water heater SS.

Installed New Rule Gold 2000 Bilge with new float switch.

NEW Prop Installed.
hulls installed total 4.

NEW thru

Overboard discharge, air conditioner intake, galley sink discharge and aft head discharge.

Installed Bilge Alarm.

Installed Trojan Emergency Bilge Pump, serviced 1/2020.

Serviced Winches.

Added New Refrigerator Electronics Module.

Install

Smart Plugs for Shore Power.
unit 10,000 BTU.

Replaced Aft Berth AC
Installed New Ducting on Aft AC Unit.

Installed New Jabsco Head in Aft Berth /w motor.

Electrician Checked all circuits and Galvanic Isolator on boat.

Installed New Jabsco Head in forward Berth /w motor.

Replaced all Sanitation Hoses.

Installed all New Fire Extinguishers.

Installed Heat Deflection Cover.

Master Bed Platform Rebuilt.

Entire Sailing Rig Inspected, Serviced, and Tuned.

2018:

Replace bilge overboard hose.

Replaced fuel pump with electric fuel pump.

Replaced all 4 House Bank Batteries.

Boat hull stripped, dings repaired and Primacoat and Micron 66 applied 2 coats each.
Survey Completed.

Replaced Galley Faucet.

New cockpit cushions.

Batteries serviced monthly.

Ac pump screen/filter serviced weekly.

Исключения

При продаже яхты исключаются личные вещи владельца.

Отказ от ответственности

Компания предоставляет описание судна или яхты добросовестно, но не может гарантировать точность этой информации, а также не ручается за техническое состояние. Покупатель должен проинструктировать своих агентов или оценщиков исследовать представленную информацию более подробно, по собственному желанию. Продажа судна или яхты, изменение цены или снятие с продажи будет происходить без предварительного уведомления.

ФОТОГРАФИИ

EL LIBRE (3)



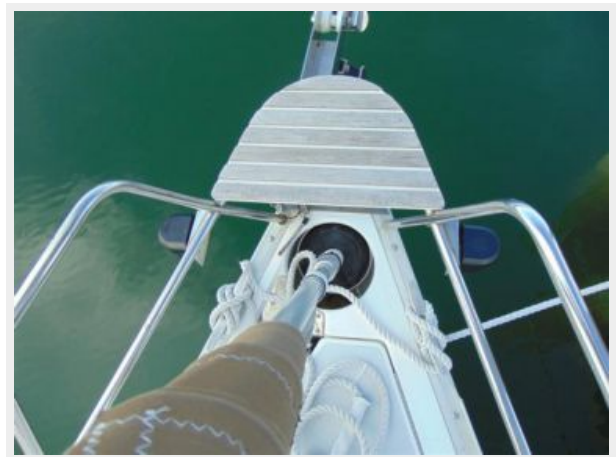
EL LIBRE 1 (2)



WING ON WING



EL LIBRE JIB FURLER 1



EL LIBRE JIB FURLER



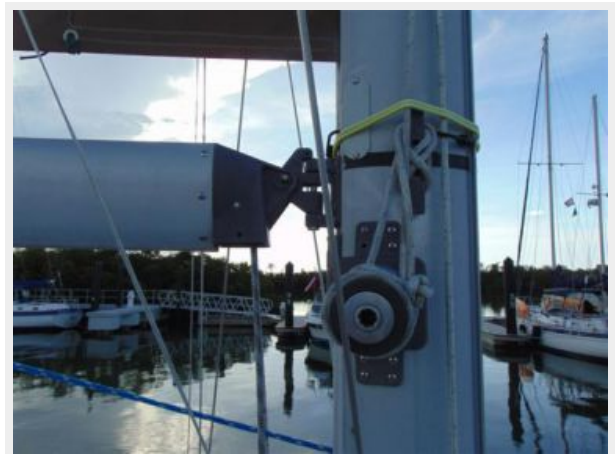
MAIN SAIL



EL LIBRE BOOM



MAIN WINCH



MAST



WIND GENERATOR



EL LIBRE ANCHOR WINCH



EL LIBRE GAS CONTAINERS AND GRILL W-SOLAR



RADAR WITH ARCH



EL LIBRE- Raymarine hybridtouch-1



EL LIBRE- Raymarine hybridtouch-2



EL LIBRE- Raymarine hybridtouch-3



P70

EL LIBRE- Raymarine hybridtouch-4



ST60



EL LIBRE I 70S



EL LIBRE COCKPIT EQUIPMENT



EL LIBRE COCKPIT



EL LIBRE ENGINE YANMAR 4JH2TE



EL LIBRE ENGINE 1



EL LIBRE ENGINE 2



EL LIBRE ENGINE 3



EL LIBRE ENGINE HRS



EL LIBRE BATTERY LOCKER 1



EL LIBRE GENERATOR KOHLER 9 KW

EL LIBRE BATTERIES



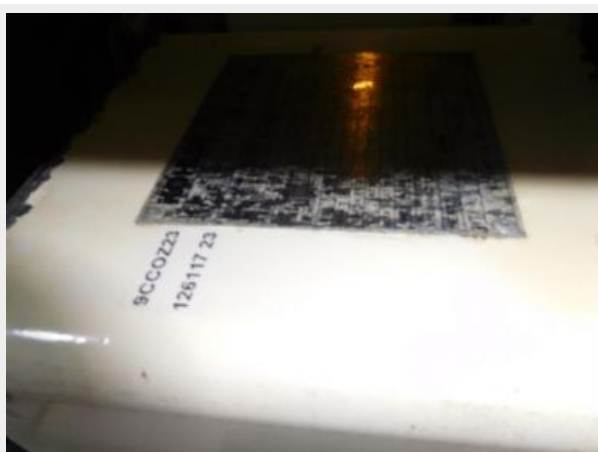
NAV STATION



EL LIBRE GENERATOR 1



GENERATOR DATA PLATE 1



GENERATOR DATA PLATE



GENERATOR HOURS



NAV TABLE



NAV STATION SHELF



NAV STATION LOCKER



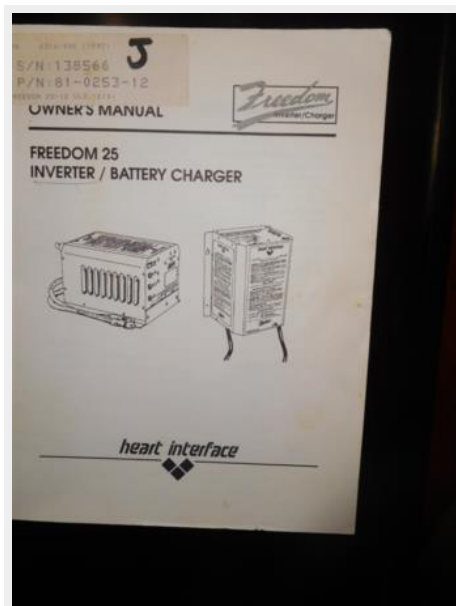
EL LIBRE LOCKER OPEN



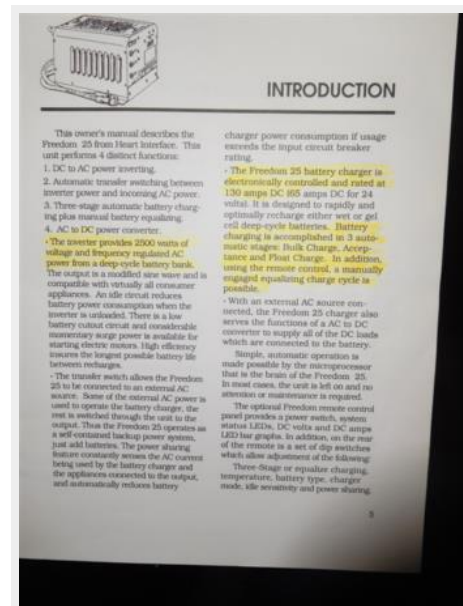
POWER CONTOR PANEL



EL LIBRE INVERTER MANUEL



EL LIBRE INVERTER PAGE



LOCKER SHELVES



LOCKERS OPEN



LOCKERS & PARTS STORAGE



IMG_3205



EL LIBRE GALLEY 2



EL LIBRE GALLEY STORAGE 1



REFIG- FREEZOR



EL LIBRE FLOOR AND DRAWS



REFIG-FREEZ OPEN



REFIG-FREEZ OPEN 2



REFIG-FREEZ OPEN 1



REFIG



STAINLESS SINK



UNDER SINK STORAGE



EL LIBRE FORCE 10 OVEN 1



OVER COUNTER STORAGE



REFIG-FREEZ OPEN



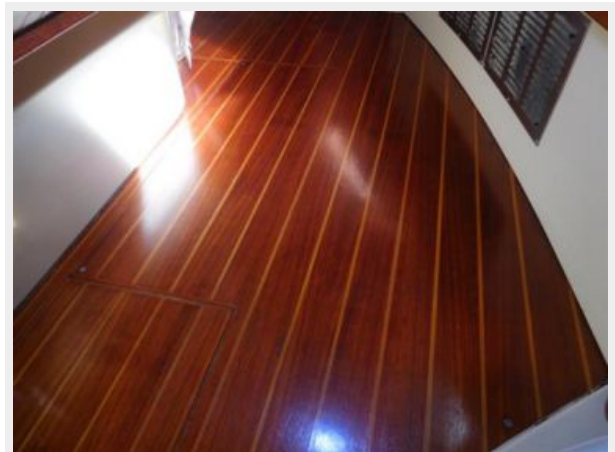
EL LIBRE GALLEY FLOOR



EL LIBRE GALLEY STORAGE



SALOON FLOOR



EL LIBRE COMPANION WAY STEPS



MASTER CABIN



MASTER CABIN STORAGE



MASTER CABIN SHELF AND STORAGE 1



MASTER CABIN HEAD

MASTER CABIN SHELF AND STORAGE



MASTER CABIN BATH-SHOWER



IMG_3207



Guest Cabin 6



Guest Cabin 1



Guest Cabin and drawers



Guest Cabin and drawers 1



Guest Cabin LOCKER 1



Guest Cabin LOCKER SHELVES



Guest Cabin LOCKER 2



Guest Cabin HEAD 2



Guest Cabin 7



Guest Cabin STORAGE 1



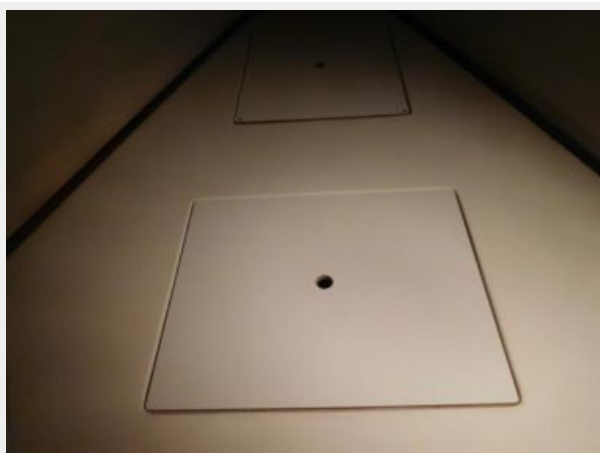
Guest Cabin STORAGE 2



Guest Cabin STORAGE



**Guest Cabin W-WATER STORAGE
COMPARTMENTS**



Guest Cabin HATCH



Guest Cabin SINK AND STORAGE



Guest Cabin Head



Guest Cabin HEAD 4



Guest Cabin SINK 1



Guest Cabin SHOWER



Guest Cabin HEAD 1



EL LIBRE BATTERY LOCKER



EL LIBRE MAST



IMG_3201



IMG_3202



IMG_3203



IMG_3204



КОНТАКТЫ

Андрей Шестаков (Andrey Shestakov) – ведущий яхтенный брокер отдела продаж яхт и судов компании Shestakov Yacht Sales Inc. Официальный представитель Shestakov Yacht Sales Inc. для русскоговорящих клиентов в центральном офисе компании в Майами/Форт Лодердейл/Флорида/США.

Контактная информация

Email: andrey@shestakovyachtsales.com

Web: shestakovyachtsales.com

Телефоны

Краснодарский край: **+7(918)465-66-44**

США, Майами, Флорида: **+1(954)274-4435**

Время работы

Понедельник – Суббота: **9:00 - 21:00**
EDT

Воскресенье: **Закрито**

Адрес



Harbour Towne Marina, 850 NE 3rd St,
STE 213, Dania, FL 33004