

LIBERTY — TRUMPY



Судостроитель: TRUMPY

Год постройки: 1954

Модель: Моторная яхта

Цена: **ЦЕНА ЯХТЫ ПО ЗАПРОСУ**

Местонахождение: United States

Длина общая: 68' 0" (20.73m)

Ширина: 16' 4" (4.98m)

Мин. осадка: 3' 5" (1.04m)

Макс. осадка: 3' 7" (1.09m)

Крейс. скорость: 9 Kts. (10 MPH)

Макс. скорость: 13 Kts. (15 MPH)

Купить **Liberty — TRUMPY** а также выбрать подходящую вам яхту из нашего каталога яхт вам поможет опытный яхтенный брокер Андрей Шестаков. На сегодняшний день компания **Shestakov Yacht Sales Inc.** имеет большое количество яхт в собственном списке продаж, а также тесно сотрудничает со всеми крупными яхтенными производителями по всему миру.

Для того чтобы купить яхту **Liberty — TRUMPY** а также проконсультироваться по любому вопросу связанному с покупкой, продажей, чартером яхт позвоните по телефону **+7(918)465-66-44**.

ОГЛАВЛЕНИЕ

ОГЛАВЛЕНИЕ	2
ХАРАКТЕРИСТИКИ	5
Обзор	5
Основная информация	5
Размеры	5
Скорость, вместимость и масса	6
Размещение	6
Корпус и палуба	6
Информация о двигателе	6
ПОДРОБНОЕ ОПИСАНИЕ	7
Specs	7
Electronics	7
Inside Equipment	7
Electrical Equipment	7
Outside Equipment/Extras	8
LIBERTY IS READY FOR NEW ADVENTURES	8
Construction and Refit Features	8
Work Completed 2018	9
March, 2018, all three heads were extensively refurbished including	9
Vessel Walk Thru	9
Accommodations	11
A stairway from the main salon accesses the staterooms	12
Updated Master En Suite Head	12
Guest Stateroom-Starboard	12
Guest Stateroom-Port	12
Guest Stateroom Shared Head	13
Crew Quarters	13
Helm	13

Galley	14
Deck Equipment	14
Mechanical	14
Electrical	15
Safety Equipment	16
Broker Remarks	16
Exclusions	16
Исключения	17
Отказ от ответственности	17
ФОТОГРАФИИ	18
68-1954-Trumpy-Cruiser-01	18
68-1954-Trumpy-Cruiser-02	18
68-1954-Trumpy-Cruiser-03	18
68-1954-Trumpy-Cruiser-04	18
68-1954-Trumpy-Cruiser-05	18
68-1954-Trumpy-Cruiser-06	18
68-1954-Trumpy-Cruiser-07	19
68-1954-Trumpy-Cruiser-08	19
68-1954-Trumpy-Cruiser-09	19
68-1954-Trumpy-Cruiser-10	19
68-1954-Trumpy-Cruiser-11	19
68-1954-Trumpy-Cruiser-12	19
68-1954-Trumpy-Cruiser-13	20
68-1954-Trumpy-Cruiser-14	20
68-1954-Trumpy-Cruiser-15	20
68-1954-Trumpy-Cruiser-16	20
68-1954-Trumpy-Cruiser-17	20
68-1954-Trumpy-Cruiser-18	20
68-1954-Trumpy-Cruiser-19	21

68-1954-Trumpy-Cruiser-20	21
68-1954-Trumpy-Cruiser-21	21
68-1954-Trumpy-Cruiser-22	21
68-1954-Trumpy-Cruiser-23	22
68-1954-Trumpy-Cruiser-24	22
68-1954-Trumpy-Cruiser-25	22
68-1954-Trumpy-Cruiser-26	22
68-1954-Trumpy-Cruiser-27	22
68-1954-Trumpy-Cruiser-28	22
68-1954-Trumpy-Cruiser-29	23
68-1954-Trumpy-Cruiser-30	23
68-1954-Trumpy-Cruiser-31	23
68-1954-Trumpy-Cruiser-32	23
68-1954-Trumpy-Cruiser-33	23
68-1954-Trumpy-Cruiser-34	23
68-1954-Trumpy-Cruiser-36	24
68-1954-Trumpy-Cruiser-35	24
68-1954-Trumpy-Cruiser-38	24
68-1954-Trumpy-Cruiser-37	24
68-1954-Trumpy-Cruiser-39	24
68-1954-Trumpy-Cruiser-40	24
68-1954-Trumpy-Cruiser-41	25
68-1954-Trumpy-Cruiser-42	25
68-1954-Trumpy-Cruiser-43	25
КОНТАКТЫ	26
Контактная информация	26
Телефоны	26
Время работы	26
Адрес	26

ХАРАКТЕРИСТИКИ

Обзор

"OWNERS HAVE OUTGROWN HER AND WISH TO FIND A NEW PROJECT. PERFECT OPPORTUNITY TO OWN A PART OF UNITED STATES MARITIME HISTORY.

John Trumpy designed and built the most iconic American motor yachts from the 1920's until the 1970's. They always evoke a much kinder, gentler time in American history wherever they grace a harbor or marina. That was a time when yachts were yachts and life was simpler. John bestowed much love, elegance and functionality into each of the over 400 yachts that were built bearing the name Trumpy.

LIBERTY started life on John's drafting board as Design Number 368 and was designated the moniker SERANO. She was built in Annapolis, Md.

LIBERTY, IS READY TO CARRY ON HER TRADITION OF GRACEFUL CRUISING WITH A NEW OWNER AND FAMILY.

- Twin GM 6V71N diesels removed and rebuilt, now have 650 hours
- 3 Stateroom/2 Head Layout plus Crew
- Extreme Restoration was begun in 2016 and is still ongoing

Основная информация

Тип судна: Моторная яхта

Модельный год: 1954

Год постройки: 1954

Страна: United States

Регистрационный номер: 81935-3587410

Размеры

Длина общая: 68' 0" (20.73m)

Ширина: 16' 4" (4.98m)

Мин. осадка: 3' 5" (1.04m)

Макс. осадка: 3' 7" (1.09m)

Трапы: 22' 0" (6.71m)

Скорость, вместимость и масса

Крейс. скорость: 9 Kts. (10 MPH)

Макс. скорость: 13 Kts. (15 MPH)

Вместимость воды: 120 Gallons

Вместимость сточного бака: 45 Gallons

Объем топливного бака: 175 Gallons

Размещение

Всего кают: 2

Всего ком. состава: 3

Корпус и палуба

Материал корпуса: Wood

Информация о двигателе

Двигатели: 2

Производитель: GM

Модель: 6V71 N

Тип двигателя: Inboard

Тип топлива: Diesel

ПОДРОБНОЕ ОПИСАНИЕ

Specs

- Builder: John Trumpy and Sons
- Designer: John Trumpy

Electronics

- TV set
- VHF
- GPS
- Radar
- Navigation center
- Depthsounder
- Log-speedometer
- Compass
- Autopilot
- Plotter

Inside Equipment

- Refrigerator
- Air conditioning
- Air compressor
- Oven
- Hot water
- Bow thruster
- Battery charger
- Electric bilge pump
- Manual bilge pump
- Electric head
- Deep freezer
- Microwave oven

Electrical Equipment

- Shore power inlet
- Inverter
- Generator

- Electrical Circuit: 12V

Outside Equipment/Extras

- Swimming ladder
- Tender
- Liferaft
- Cockpit cushions
- Davits
- Gangway
- Cockpit table
- Electric windlass

LIBERTY IS READY FOR NEW ADVENTURES

Each of LIBERTY'S 9 owners have loved her and treated her as the Grand Dame that she is. Her current owner bought her in 2012 and in the past 7 years has lovingly restored her to her former elegance and comfort while adding contemporary amenities. LIBERTY is one of only 3 cruisers designed and built by John Trumpy and Sons. With her skinny draft of 3'5" she is perfectly suited for intracoastal and inland waters. But don't be fooled by her pedigree, she has been set up to also cruise the Bahamas and to remain self sufficient on the hook for up to 48 hrs.

As heads will turn when a Rolls Royce slides by, one is guaranteed to see all heads turn as LIBERTY cruises past in her stately elegance and grace.

LIBERTY, until recently, has been kept in a boathouse in Stuart, FL. She is ready to cruise. Her sleek profile, crisp white hull and polished wood detailing exudes luxury, leisure and an aristocracy that is elusive in modern cookie cutter boats. Come step aboard and be prepared to be wowed.

Paste this link in your browser to view virtual tour:

Find us on Facebook [Facebook.com/trumpyliberty](https://www.facebook.com/trumpyliberty)

Construction and Refit Features

- LIBERTY has her original canvas over wood decking which has been glassed over and painted white
- The top of the cabin house has been rebuilt and glassed over by Moores Marine in 2014 while lying in Riviera Beach FL
- LIBERTY had her bottom re planked with long leaf yellow pine on Oak frames during the same yard visit in 2014. She is fastened with bronze fasteners

- Her pillow blocks were also replaced at the same time
- Any and all necessary repairs below water were completed in 2014 by Jim Moores team of crafts people
- Great care was taken in painting LIBERTY with white Awlgrip on her topsides
- Her cap rails, hand rails and all exterior teak have been varnished with at least 9 coats of varnish, several coats of clear Awlgrip and an additional coat is added every 6 months
- A new worm shoe was added to LIBERTY during her annual maintenance in April 2017. During the same yard visit LIBERTY received new zincs and Sea Hawk blue bottom paint.
- August 2019 was her last yard visit during which time everything below the water line was inspected and found to be in excellent condition. Her annual maintenance was performed and she returned to the water after less than a week out of the water
- There are 6 Port lights per side with newly restored stainless steel “eyebrows”. LIBERTY also has 7 Round port lights per side finished with gold leaf and red accent surrounds
- LIBERTY has side decks with white overheads accented with teak battens
- The Varnished Mahogany Transom of LIBERTY is a show stopper with her gold leaf name and hailing port
- LIBERTY has the intricate signature bow scroll of all Trumpys including Sequoia, the presidential yacht, that makes them stand out in a crowd
- A stainless steel ladder leads from the starboard side deck to the hard top above
- The mast has also benefited from a minimum of 9 coats of varnish and does sport all of the necessary lights including master aboard and dinner being served lights

Work Completed 2018

- June 2018: Haul out - bottom painted with 2 coats of Sea Hawk
- Cutlass bearings were inspected and found to be fine

March, 2018, all three heads were extensively refurbished including

- Fabricated fixed portlight covers
- All new vinyl straw wall coverings
- New teak flooring
- Custom vanities with corian countertops
- New sinks and new plumbing
- New Nickel plated, spot resistant faucets, shower head, etc. (mostly Grohe)
- New Exhaust fans in both bathrooms
- New LED lighting
- New Custom built shower door

Vessel Walk Thru

Walking along the graceful profile of LIBERTY to the boarding ladder located just aft of midship, one cannot help but be impressed. Her clean, clutter free, decks are perfectly suited for lounging in a teak deck chair with a cold beverage in hand. The two dunnage boxes are covered to protect them from the Florida sun. Proceeding through either wing door to port and starboard, one finds a most accommodating aft deck that can be enclosed or open with sliding plexiglass windows and roll-up isinglass curtains. There is a built in settee fully aft, a very handy Hi-Lo table and 4 white Bamboo chairs that make gathering guests together for cocktails or dinner extremely easy and enjoyable.

The aft deck has been refurbished to reflect a bygone era with nautical blue indoor/outdoor carpet, white bamboo side table, lamps as well as navy blue cushions for the settee and the chairs. All overhead lights are LED and provide perfect illumination for reading, dancing, or chit chatting.

Aft to starboard is a sliding access door leading to the composite swim platform. Down the bi-fold teak and gleaming stainless steel ladder, you find the very large, teak colored swim platform; perfect for diving, snorkeling or swimming in crystal clear waters of the Bahamas or the Keys. The size of the swim platform makes it perfect for jumping into the tender, lounging after swimming or just plain goofing off. There is an air compressor located in the lazarette locker.

Entry to the main salon is through highly varnished double doors that are centered in the high gloss white bulkhead.

Your breath is taken away by the warmth and glow emanating from the original mahogany paneling. The paneling and the original built in signature Trumpy secretary on the aft starboard bulkhead were painstakingly stripped and refinished.

The overhead is newly painted white with the traditional varnished teak battens. Here too, the lighting has been upgraded to LED. If you turn and look at the aft doors, you will see beautiful glass uppers and removable bottom panels that allow the fresh breeze to circulate. To ensure even more cross breezes, one may crank down the two large windows located to port and starboard. These too have been lovingly refitted and brought back to original. White shades and valances insure privacy while dockside.

Blue and white upholstered wing chairs, so reminiscent of a luxury rarely encountered in modern day yachts have a small table and lamp between them. A suitably upholstered love seat is located forward. There is a large mirror above sofa running athwart ship across the forward bulkhead. Next to the love seat is a lovely, small mahogany cabinet with storage and a lamp a handsome reading lamp. A built in cabinet on the far end of the love seat houses an air cooled portable AC unit.

The wisdom behind the portable AC unit is this: Even though wired as a permanent accessory, there was no chopping and dicing of the saloon to install MarineAir Air Conditioning. This unit has a replacement cost of less than \$500 and takes a couple of hours from start to finish. The blue carpet complements the varnished bulkheads. There is an originally designed, Trumpy yard

built mahogany Balustrade located around the steps that lead below to the guest staterooms. This stairway is located aft to port.

The wheelhouse is forward through varnished mahogany and glass doors.

The wheelhouse has been restored to her former glory with the some rather handy improvements that do not deter from the elegance of her launch era. The parquet teak sole was refinished in the Spring of 2017. Along the aft bulkhead is a traditional bench seat with 2 large file drawers and 3 very handy chart drawers. Opposite the settee is the traditional wooden spoke wheel. Visions of cruising in yacht club regattas will swirl through your mind as soon as you put your hands on her wheel. Sure beats a stainless steel wheel. Her steering has also been totally rebuilt and the Morse controls are very responsive. The 2 foot pedals (one of the many Captain inspired improvements on LIBERTY) for the massive 42 hp bow thruster will move LIBERTY along side in an heavy wind.

She has such an extensive battery bank that you may engage for extended periods of time without fear of draining the batteries. Another really great idea of her extremely knowledgeable Captain and owner was to locate one of the heavy duty battery banks below the inboard bunk of the port guest stateroom. Makes it a lot easier to replace batteries rather than climbing over her gleaming GM Diesels to reach an outboard battery box.

The original location of LIBERTY'S electrical panel has been maintained even after the complete rewiring of the yacht. The totally upgraded electrical panels are located to port of the helm. The switches for the inverters are also conveniently located behind these varnished doors. LIBERTY has been set up to live on the hook for up to 48 hours on her battery banks. The remote generator start is also located in this area. The generator was replaced in 2017.

Breezes waft through the pilothouse via the two opening varnished pilothouse doors to port and starboard. Open the electric center window of the windshield, and gather even more breezes. The two side windows comprising the rest of the windshield are fixed. All new wiper motors.

Accommodations

SECOND LOWER SALOON OR FORMER DINING ROOM:

Three steps down from the Pilothouse is the lower salon or former formal dining salon. This room also features mahogany joinery. 2 windows have been refitted with frames and their cranking mechanisms have been rebuilt; there are also 3 fixed windows facing forward. The original sideboard has been updated with a flat screen TV mounted above. The TV is concealed behind a painting held in place by magnets which maintains the ambiance of an earlier era. There are 2 original cabinets, one, of which houses a second portable A/C unit. The sole is carpeted with access to the main engines.

This comfortable area could be very easily returned to the original intended usage as a formal dining room. A stairway to port leads to the galley.

A stairway from the main salon accesses the staterooms

MASTER STATEROOM

- Full Beam, Aft
- Centerline Queen berth w/NEW Tempur-Pedic mattress
- Drawers below berth
- 2 x Hanging lockers with slide outs
- 2 x Nightstands w/lamps
- Seating-port
- Vanity & stool-starboard
- Vizio TV
- Overhead hatch
- 4 x Opening portlights w/louvered privacy doors

Updated Master En Suite Head

- NEW Crown Imperial fresh water throne, 2018
- NEW Plumbing
- NEW Grohe faucets
- Separate stall show w/custom door
- NEW exhaust fan
- NEW wiring
- NEW LED lighting
- NEW Custom Vanity w/Corian top, 2018

Guest Stateroom-Starboard

- Twin berths w/drawers below
- Custom Blue spreads and shams
- NEW Tempur-Pedic mattresses
- Built-in nightstand between berths with mirror above
- 110v Wall Scones over each berth
- 110v LED overhead lights
- 2 x Opening portlights
- Hanging locker
- Full length mirror on forward bulkhead

Guest Stateroom-Port

- Twin berths w/drawers below

- Custom Navy Blue spreads and shams
- NEW Tempur-Pedic mattresses
- Built-in nightstand between berths with mirror above
- 110v Wall Scones over each berth
- 110v LED overhead lights
- 2 x Opening portlights
- Hanging locker
- Full length mirror on forward bulkhead

Guest Stateroom Shared Head

- NEW Crown Imperial fresh water throne, 2018
- NEW Plumbing
- NEW Grohe faucets
- Separate shower stall w/curtain
- NEW exhaust fan
- NEW wiring
- NEW LED lighting
- NEW Custom vanity w/Corian top, 2018

Crew Quarters

- The door to the crew quarters is located out board on the starboard side of the galley
- Accommodations for 3 persons
- Head and sink are all the way forward and there is a separate shower stall
- Avanti drink refrigerator
- Premium ice maker
- Large overhead hatch

Helm

- Garmin 7215 color 17" screen monitor with radar, chart plotter, depth and speed, AIS
- Garmin autopilot
- VHF radio
- Fixed stainless steel binnacle with compass
- Search light control
- Dual air horns
- A clock and barometer are located on the aft bulkhead as well as a teak binocular box
- Her launch medallions are also located on the aft bulkhead

Galley

- Completely refurbished to its original functionality and classic appearance in 2015
- Completely rewired
- Original stainless steel Star Metal double door refrigerator w/freezer below was completely renewed
- 4 burner electric Whirlpool stove with oven is new on the inside and classic looking on the outside
- Bulkheads were freshly painted, trim and cabinets re-varnished and new blue and white asphalt tile flooring was installed
- Overhead longitudinal beams have been boxed in with teak
- Stainless steel counters are ta signature Trumpy detail
- Deep stainless steel sink
- Abundant storage, cabinets and drawers will please your most discriminating seagoing chef
- New Panasonic microwave/convection oven is a great asset to a sea
- Hinged, highly varnished teak table provides extra counter space or a quick snack
- Overhead butterfly hatch with plenty of glass to allow in the daylight
- 4 Round port lights

Deck Equipment

- Highly varnished handrails with stainless stanchions
- Highly varnished caprails
- Painted wood dunnage boxes, covered -Foredeck
- Large crew companionway hatch
- Glass and teak hatch over galley/crew area with protection bars
- Ideal electric windlass with rope and chain capstans 40' Chain and 250' new rode
- Powerful Bendix electric bow thruster (42 Horsepower) with remote foot pedals in the pilothouse just below the helm.
- 2 Danforth anchors: (1) 50 lb. on bow; (1) 80 lb. in lazarette
- "Dummy" stack with storage located inside
- Garmin antenna
- Dual air horns
- Search light controlled from the pilothouse
- Electric Davit
- Avon 12' RIB tender in chocks (2010) with Nissan 8 hp outboard

Mechanical

A doorway on the port side of LIBERTY'S leads aft from the galley into the immaculate engine room. It is very apparent that the bulk of the 1.3 million dollars spent to bring LIBERTY back to

her former glory, was spent in the ER.

The biggest single project on the inside of LIBERTY was the removal from the yacht of her twin GM 6V71N engines. They left the yacht in 2016 and were taken to East Coast Diesel. At the time of this writing, she has approximately 500 hours on fully rebuilt and refurbished engines. The entire engine room was gutted, steam cleaned and refurbished including all NEW fuel tanks, water tanks and holding tanks. She has been meticulously maintained since the reinsertion of the now new GM 6V71 Naturals. These engines are indeed bullet proof and they are very reliable and economical: 5 – 7 gph at 9.6 knots at 1300 rpm. The naturally aspirated engines have a substantially longer life than more modern engines equipped with turbos and a zillion computer chips. Most problems that might pop up can be easily addressed without a computer and 5 technicians.

Completely rebuilt twin GM 6V71N's with approximately 500 hours.

- NEW Stainless Steel fuel tanks
- NEW Stainless Steel water tanks
- NEW wiring
- NEW plumbing
- NEW Oberdorfer AC water pump
- 1 Newer AC compressor
- 1 New (2018) AC compressor for master stateroom
- All new bilge pumps and float switches during the past years
- NEW exhaust system
- NEW 12v lighting
- NEW engine mounts
- NEW Camera for the engine room
- NEW oil change system
- NEW exhaust blankets.
- Original chain and link manual steering: NEW cables and pulleys in 2015
- 2014 3 bladed bronze 24" props are inspected and are refurbished as necessary every year.
- Stainless Steel shafts are dialed every 3 years
- Cutlass bearings new in 2018
- Pillow blocks 2014
- LIBERTY has 30k in new plumbing, Crown Imperial Heads with 2 new plastic holding tanks. (2017)

Electrical

- 110/220 V AC
- 12 V DC
- 2 Newer 4kw Inverters
- Heavy duty alternators on both engines.

- 2 x 50 amp power cords with electrical outlets both port and starboard.
- Newer 42 HP Bendix Electric Bow Thruster
- 1 NEWER 12v battery bank for engine starting
- 1 Newer 12v start battery bank for generator
- 5 Newer 12v maintenance free batteries for House bank.
- All batteries are less than 1 year old.
- Onan 20 kw generator with 1900 hours. This generator was purchased used in August 2016 with 1500 hrs on it. Has been totally serviced.
- All new wiring through out LIBERTY.
- Electric dinghy Davit recently serviced.
- Night lights on timers in Galley.
- Custom light covers in galley.
- All new 12 v and 110 v LED lighting throughout LIBERTY.
- Two newer Portable self contained AC's for saloons.
- Bauer mini air compressor located in the lazarette.

Safety Equipment

- Flares in flare kit
- Life Vests - 2 per Stateroom plus 3 Crew
- Winslow 6-man life raft
- SART EPIRB (mounted on stack)
- Portable fire extinguishers in each cabin
- 2 x CO2 canisters 30 lb & 40 lb.- Engine room -NEW, 2015

Broker Remarks

LIBERTY has enjoyed 9 owners since being commissioned for Mr. Miller and launched as SERENO in 1954. Her present owner has spent in the area of 1.3 million dollars to make her one of the most cruise ready Trumpys currently afloat. She is ready for her next adventure whether cruising the East Coast of the US or gunk holing around the Bahamas. LIBERTY will make her new owner very proud and will continue to turn heads for many more generations of yachtsmen.

Paste this link in your browser to view virtual tour:

Exclusions

- Owners personal items
- The COAT OF ARMS ON THE STACK MUST BE REMOVED UPON PURCHASE

Исключения

При продаже яхты исключаются личные вещи владельца.

Отказ от ответственности

Компания предоставляет описание судна или яхты добросовестно, но не может гарантировать точность этой информации, а также не ручается за техническое состояние. Покупатель должен проинструктировать своих агентов или оценщиков исследовать представленную информацию более подробно, по собственному желанию. Продажа судна или яхты, изменение цены или снятие с продажи будет происходить без предварительного уведомления.

ФОТОГРАФИИ

68-1954-Trumpy-Cruiser-01



68-1954-Trumpy-Cruiser-02



68-1954-Trumpy-Cruiser-03



68-1954-Trumpy-Cruiser-04



68-1954-Trumpy-Cruiser-05



68-1954-Trumpy-Cruiser-06



68-1954-Trumpy-Cruiser-07



68-1954-Trumpy-Cruiser-08



68-1954-Trumpy-Cruiser-09



68-1954-Trumpy-Cruiser-10



68-1954-Trumpy-Cruiser-11



68-1954-Trumpy-Cruiser-12



68-1954-Trumpy-Cruiser-13



68-1954-Trumpy-Cruiser-14



68-1954-Trumpy-Cruiser-15



68-1954-Trumpy-Cruiser-16



68-1954-Trumpy-Cruiser-17



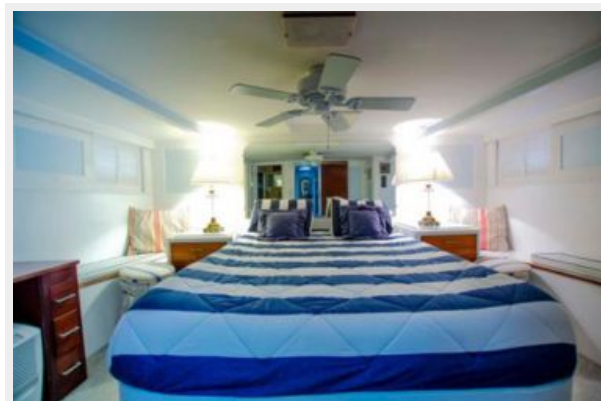
68-1954-Trumpy-Cruiser-18



68-1954-Trumpy-Cruiser-19



68-1954-Trumpy-Cruiser-20



68-1954-Trumpy-Cruiser-21



68-1954-Trumpy-Cruiser-22



68-1954-Trumpy-Cruiser-23



68-1954-Trumpy-Cruiser-24



68-1954-Trumpy-Cruiser-25



68-1954-Trumpy-Cruiser-26



68-1954-Trumpy-Cruiser-27



68-1954-Trumpy-Cruiser-28



68-1954-Trumpy-Cruiser-29



68-1954-Trumpy-Cruiser-30



68-1954-Trumpy-Cruiser-31



68-1954-Trumpy-Cruiser-32



68-1954-Trumpy-Cruiser-33



68-1954-Trumpy-Cruiser-34



68-1954-Trumpy-Cruiser-35



68-1954-Trumpy-Cruiser-36



68-1954-Trumpy-Cruiser-38



68-1954-Trumpy-Cruiser-37



68-1954-Trumpy-Cruiser-39



68-1954-Trumpy-Cruiser-40



68-1954-Trumpy-Cruiser-41



68-1954-Trumpy-Cruiser-42



68-1954-Trumpy-Cruiser-43



КОНТАКТЫ

Андрей Шестаков (Andrey Shestakov) – ведущий яхтенный брокер отдела продаж яхт и судов компании Shestakov Yacht Sales Inc. Официальный представитель Shestakov Yacht Sales Inc. для русскоговорящих клиентов в центральном офисе компании в Майами/Форт Лодердейл/Флорида/США.

Контактная информация

Email: andrey@shestakovyachtsales.com

Web: shestakovyachtsales.com

Телефоны

Краснодарский край: **+7(918)465-66-44**

США, Майами, Флорида: **+1(954)274-4435**

Время работы

Понедельник – Суббота: **9:00 - 21:00**
EDT

Воскресенье: **Закрито**

Адрес



Harbour Towne Marina, 850 NE 3rd St,
STE 213, Dania, FL 33004