

ZEN — LEOPARD



Судостроитель: LEOPARD

Год постройки: 2006

Модель: Моторная яхта

Цена: ЦЕНА ЯХТЫ ПО ЗАПРОСУ

Местонахождение: United States

Длина общая: 88' 0" (26.82m)

Ширина: 19' 10" (6.05m)

Макс. осадка: 4' 2" (1.27m)

Крейс. скорость: 32 Kts. (37 MPH)

Макс. скорость: 38 Kts. (44 MPH)

Купить ZEN — LEOPARD а также выбрать подходящую вам яхту из нашего каталога яхт вам поможет опытный яхтенный брокер Андрей Шестаков. На сегодняшний день компания Shestakov Yacht Sales Inc. имеет большое количество яхт в собственном списке продаж, а также тесно сотрудничает со всеми крупными яхтенными производителями по всему миру.

Для того чтобы купить яхту ZEN — LEOPARD а также проконсультироваться по любому вопросу связанному с покупкой, продажей, чартером яхт позвоните по телефону **+7(918)465-66-44**.

ОГЛАВЛЕНИЕ

ОГЛАВЛЕНИЕ	2
ХАРАКТЕРИСТИКИ	3
Обзор	3
Основная информация	4
Размеры	4
Скорость, вместимость и масса	5
Размещение	5
Корпус и палуба	5
Информация о двигателе	5
ПОДРОБНОЕ ОПИСАНИЕ	6
Additional Specs, Equipment and Information:	6
Исключения	15
Отказ от ответственности	15
ФОТОГРАФИИ	16
КОНТАКТЫ	28
Контактная информация	28
Телефоны	28
Время работы	28
Адрес	28

ХАРАКТЕРИСТИКИ

Обзор

Best Priced Worldwide.

Smaller trades are welcome .

She boasts a maximum cruising range of 400.0nm.

Low financing rates available and Dockage in a Prime Location Marina .

- OPTIONAL ENGINE PACKAGE- 16V 2000 MTU M92
- UPDATED GARMIN ELECTRONIC NAV EQUIPMENT
- CRESTRON AUDIO VISUAL
- LED LIGHTS THROUGHOUT
- NEW UNDERWATER LIGHTS
- NEW SALON UPHOLSTERY
- HUGE MASTER SUITE WITH LOUNGE SITTING AREA

ACCOMMODATIONS:

MASTER'S SUITE: The mid-ship/Master's Suite provides sleeping for two adults on a queen berth (w/ storage and drawers below), two (2) hanging lockers, a digital safe, an LCD TV, a Blu-Ray disc player, an AV receiver, a desk/vanity with a stool, a compact refrigerator, a chest of drawers, and two (2) head compartments (aft to port and starboard).

MASTER'S SITTING ROOM: Located forward of the Master Suite. Featured a sofa, two (2) leather armchairs, an LCD TV, an electric TV lift, a Blu-Ray disc player, an AV receiver, and plentiful storage for glassware and cutlery.

Electric TV

VIP'S STATEROOM: The port/VIP's Stateroom provides sleeping for two adults on a full berth (w/ storage and drawers below), a hanging locker, an LCD TV, a digital safe, a music entertainment system, and a full head compartment (forward).

GUEST'S STATEROOM: The starboard/Guest's Stateroom provides sleeping for three adults on two (2) single berths (w/ storage and drawers below), a retractable upper single berth, a hanging locker, an LCD TV, a music entertainment system, and a full head compartment (aft).

CAPTAIN'S STATEROOM: Located in the lower deck forward to port, the Captain's Stateroom provides sleeping for one adult on a single berth (w/ storage and drawers below), a hanging locker, an LCD TV, a satellite receiver, an AM/FM radio & CD/DVD player, a navigation system, a multi-function display, an emergency escape hatch (overhead), a digital safe, and two retractable table tops.

CREW STATEROOM: Located in the lower deck forward to starboard, the Crew Stateroom provides sleeping for two (2) adults on two single berths (w/ storage and drawers below), a hanging locker, an LCD TV, a satellite receiver, an AM/FM radio & CD/DVD player, and an emergency escape hatch (overhead).

STAIRCASES:

A staircase located forward to port at the Helm Station provides access down to the staterooms.

New bottom paint, new zincs, March 2020

Drives serviced with all new cables and Hydraulic hoses. March 2020 Brand new BCS bow thruster. March 2020 Buff and wax the hull and galvanize the anchors March 2020.

Основная информация

Тип судна: Моторная яхта

Модельный год: 2006

Год постройки: 2006

Страна: United States

Кубрик: Да

Размеры

Длина общая: 88' 0" (26.82m)

Ширина: 19' 10" (6.05m)

Макс. осадка: 4' 2" (1.27m)

Скорость, вместимость и масса

Крейс. скорость: 32 Kts. (37 MPH)

Макс. скорость: 38 Kts. (44 MPH)

Водоизмещение: 12547 Pounds

Вместимость воды: 2000 Gallons

Объем топливного бака: 8000 Gallons

Размещение

Всего кают: 3

Всего ком. состава: 5

Корпус и палуба

Материал корпуса: Fiberglass

Информация о двигателе

Двигатели: 2

Производитель: MTU

Модель: M92 16V 2000

ПОДРОБНОЕ ОПИСАНИЕ

Additional Specs, Equipment and Information:

ACCOMMODATIONS:

MASTER'S SUITE: The mid-ship/Master's Suite provides sleeping for two adults on a queen berth (w/ storage and drawers below), two (2) hanging lockers, a digital safe, an LCD TV, a Blu-Ray disc player, an AV receiver, a desk/vanity with a stool, a compact refrigerator, a chest of drawers, and two (2) head compartments (aft to port and starboard).

MASTER'S SITTING ROOM: Located forward of the Master Suite. Featured a sofa, two (2) leather armchairs, an LCD TV, an electric TV lift, a Blu-Ray disc player, an AV receiver, and plentiful storage for glassware and cutlery.

Electric TV

VIP'S STATEROOM: The port/VIP's Stateroom provides sleeping for two adults on a full berth (w/ storage and drawers below), a hanging locker, an LCD TV, a digital safe, a music entertainment system, and a full head compartment (forward).

GUEST'S STATEROOM: The starboard/Guest's Stateroom provides sleeping for three adults on two (2) single berths (w/ storage and drawers below), a retractable upper single berth, a hanging locker, an LCD TV, a music entertainment system, and a full head compartment (aft).

CAPTAIN'S STATEROOM: Located in the lower deck forward to port, the Captain's Stateroom provides sleeping for one adult on a single berth (w/ storage and drawers below), a hanging locker, an LCD TV, a satellite receiver, an AM/FM radio & CD/DVD player, a navigation system, a multi-function display, an emergency escape hatch (overhead), a digital safe, and two retractable table tops.

CREW STATEROOM: Located in the lower deck forward to starboard, the Crew Stateroom provides sleeping for two (2) adults on two single berths (w/ storage and drawers below), a hanging locker, an LCD TV, a satellite receiver, an AM/FM radio & CD/DVD player, and an emergency escape hatch (overhead).

STAIRCASES:

A staircase located forward to port at the Helm Station provides access down to the staterooms.

Main deck salon

- **Main deck salon with 3 seating areas**
- **2 Teak tables with stainless still base**
- **2 side doors to deck**
- **Sliding roof top**

- **Stairs to the guest area**
- **Teak flooring**
- **Air Conditioning**
- **SS sliding door**
- **Entertainment system**
- **2 New Flat Screen, HDTV Samsung lift-up**
- **Overhead lights**
- **Speakers**
- **Video cameras**

U-shape bar forward salon

- **Frigomar ice maker**
- **Fridge**
- **Stainless still sink**
- **Forward pilot station with 4 leather sport seats**

Helm Station & Electronic

- **Sailor 6006**
- **1 X ICOM GM1600E GMDSS EMERGENCY VHF**
- **1 X ICOM M33 EMERGENCY VHF**
- **Garmin GMR24HD RADAR**
- **1 X Garmin GPS/ RADAR /CHART/ NAVIGATION SYSTEM Display 15" 8215**
- **2 X Garmin GPS/ RADAR /CHART/ NAVIGATION SYSTEM 12" display 8212**
- **Garmin GPS / CHART / NAVIGATION SYSTEM ON CAPTAIN STATEROOM**
- **Ritchie Compass**
- **Garmin Windmeter**
- **Simrad AP25 autopilot Vessel computer with touch screen control over all main systems**
- **Simrad FU25 steering lever**
- **Simrad IS15 ON captain stateroom**
- **Garmin VHF GHS 10**
- **MTU engines display**
- **KVH Trivision SAT TV**
- **Electronavid digital display**
- **Bow & Stern Thruster**
- **Leopard systems touchscreen control display**
- **Digital Trim Indicators**

Electronics

- **Depthsounder**
- **Radar**

- **Log-Speedometer**
- **Wind Speed and Direction**
- **Computer**
- **Repeater(s)**
- **TV Set**
- **Navigation Center**
- **Plotter**
- **DVD Player**
- **Autopilot**
- **Radio**
- **Compass**
- **CD Player**
- **GPS**
- **Cockpit Speakers**
- **VHF**

Lower Salon

- **Very cozy area with magnificent woodwork**
- **Sofa and 2 sofa chairs**
- **Lots of shelves for storage**
- **Carpeted floor**
- **Access to master room**
- **Air Conditioning**
- **New Flat Screen, HDTV Samsung Liftup TV**
- **Direct lights on ceilings**
- **Opening porthole Port & Starboard**
- **Overhead Speakers • Custom electric window shades**
- **Frigomar digital AC control**

Master Stateroom

- **Located Mid ship**
- **Queen size bed**
- **Upgraded mirror aft bulkhead**
- **Vanity to starboard , with lift-up**
- **Opening porthole on port side and on starboard.**
- **Custom electric window shades**
- **Reading lamps**
- **Overhead speakers**
- **Overhead lights (white & blue)**
- **Sony Flat screen HDTV TV Hi-Lo**
- **(2) Hanging locker**
- **Air Conditioning**

- **Carpet floor**
- **Dressing**
- **Access to en suite bathroom**

Aft Master Head and Shower to starboard

- **Wood flooring**
- **WC TECMA**
- **Opening porthole**
- **Dual sink**
- **Mirror, shelves and cabinet under the sink**
- **Lights on ceilings and above the sinks**
- **Enclosed shower**

Aft Master Head

- **Aft to port side**
- **Wood flooring**
- **WC TECMA**
- **Mirror, shelves and cabinet under the sink**
- **Lights on ceilings and above the sink**
- **Opening porthole**
- **Blinds**

VIP Port Stateroom

- **Queen size bed**
- **Air Conditioning**
- **Flat screen TV**
- **Opening porthole on portside**
- **(2) Reading lamps**
- **Access to en-suite bathroom**
- **Custom electric window shades**
- **Carpet floor**
- **Private head & shower**
- **Overhead speakers**
- **Hanging closet**

VIP Port Head

- **Wood flooring**
- **WC TECMA**
- **Opening porthole**

- Sink
- Mirror, shelves and cabinet under the sink
- Lights on ceilings and above the sinks
- Enclosed shower

VIP Starboard Head

- **Wood flooring**
- **WC TECMA**
- **Opening porthole**
- **Sink**
- **Mirror, shelves and cabinet under the sink**
- **Lights on ceilings and above the sinks**
- **Enclosed shower**

Guest Starboard Stateroom

- **Access from the lower deck corridor to starboard side**
- **(3) Three single beds with mattresses**
- **Nightstand in the middle with drawers**
- **Reading lamp**
- **Opening porthole**
- **Curtains**
- **Carpet flooring**
- **Overhead lights**
- **Overhead speakers**
- **Flat screen TV**
- **Smoke detectors**
- **Hanging closet**

Galley

- **Stainless Steel fridge (3) and freeze (1) wall with independent temp controls**
Frigomar
- **Isotherm automatic Ice Maker**
- **Premiun Freezer bellow companionway steps**
- **Compact refrigerator/ freezer located corridor bilge**
- **Washer and Dryer Miele**
- **Dishwasher Miele**
- **Extractor**
- **Stove Miele Four (4) burners**
- **• Microwave Miele**

- **Compact Oven Miele**
- **Hatch access to storage compartment with additional freezer**

Crew Area

- **2 separate rooms**
- **1 Captain room with single bed and monitoring controls**
- **1 Crew quarter with twin beds**
- **1 head and shower room**
- **2 access to foredeck through ladders and hatches from crew area for separate access and security**

Deck

DECK FITTINGS (CONT.):

CLEATS:

Total of eight (8) cleats sighted:

- **Two (2) stainless steel 19” cleats located at the aft main deck**
- **Two (2) stainless steel 15” cleats forward at the aft main deck**
- **Two (2) stainless steel 15” cleats located at the forward deck**
- **Two (2) stainless steel 23” cleats located at the bow**

House Pipes:

- **Three(3) stainless steel hosepipes located at the bow.**
- **(2) stainless steel house pipes located at the forward deck. Two**
- **(2) stainless steel house pipes located forward at the aft main deck. Two (2) stainless steel house pipes (w/ rollers) located at the aft main deck.**

SAFETY RAILING SYSTEM:

- **Stainless steel tubular railing and stanchion safety system surrounds the bow, the forward deck, and the side decks.**

GRAB RAILS:

- **Stainless steel tubular grab rails located outboard transom.**

BOARDING DOOR:

- **One (1) FRP boarding door located aft mid-ship at the starboard side deck.**

SUN PADS:

- One (1) large sun pad (w/ six (6) cushions and a retractable stainless steel tubular canopy structure) located at the forward deck.
- One (1) large sun pad (w/ two sun-brellas) located at the aft main deck.

STORAGE HOLDS:

- Two (2) storage holds located at the forward deck.

DECK SHOWER:

- One (1) deck shower located outboard transom. One (1) deck shower located at the bow.

WASH DOWNS:

- Fresh and raw water wash downs located outboard transom.
- Fresh and raw water wash downs located at the bow.
- Electro-hydraulic transom garage door
- One (1) electro-hydraulic pasarelle (which can be utilized as a davit/crane) located outboard transom
- One (1) electro-hydraulic swim ladder located at the integral swim platform.
- Super structure Helm Station and Main Salon featured an electrically belt-driven retractable sunroof.

All teak:

- 2 wrapping winches on each Aft
- 2 Anchor windlass
- 2 Anchor with 180 meters of galvanized chain each

Garage

- Hydraulic Passerelle
- Teak deck
- Sunbed island with electric table insert
- Custom stainless steel rails
- Starboard and port line winch
- Access to swim platform and garage through 2 stairs (one on each side)
- Access forward on each side
- Sliding door entry to salon
- Custom sunshade umbrella
- Video camera

Forward Deck

- **Very spacious sunbed area with folding Bimini sun protection**
- **Sound system**
- **Access to both anchors and windlass**
- **Chain wash and firefighting connections**
- **Storage compartments on each side**
- **Opening hatches to crew and Capt quarter Electric**
- **100 AMP Shoreline**
- **Cable Master Glendenning system**
- **All outlets 110/60HZ US Specs**
- **US Power converted**

Inside Equipment

- **Stern Thruster**
- **Dishwasher**
- **Bow Thruster**
- **Washing Machine**
- **Electric Bilge Pump**
- **Oven**
- **Manual Bilge Pump**
- **Microwave Oven**
- **Air Compressor**
- **Marine Head**
- **Air Conditioning**
- **Electric Head**
- **Heating**
- **Hot Water**
- **Refrigerator**
- **Fresh Water Maker**
- **Deep Freezer**
- **Sea Water Pump**
- **Battery Charger**

Electrical Equipment

- **Shore Power Inlet**
- **Inverter**

Outside Equipment/Extras

- **Teak Cockpit**
- **Cockpit Shower**
- **Teak Sidedecks**
- **Gangway**

- Davit(s)
- Hydraulic Gangway
- Radar Reflector
- Wind Generator
- Tender
- Liferaft
- Cockpit Cushions
- Cockpit Table
- Swimming Ladder

Engine Room

- 2 X MTU 16V 2000 M92 with 2203 hours
- ZF Transmissions. Model ZF 3060. Ratio: 2.240:1A
- Surface Drives: Twin Disc Arneson Surface Drives. Model ASD15
- 1 Generator 27KVA Kohler with 1389 hours
- 1 Generator 20 KVA Kohler with 1882 hours
- Water Chilled Air Conditioning system (3 units)
- Idromar water maker
- Video camera
- AC/DC water pump for fire and chain wash system
- Dual fuel water separator
- Dolphin battery charger 24V 100
- MasterVolt Chargermaster 24/30-3
- Voltmaster
- Voltage Regulator: Nippon America: ASERV-5000C
- 2 X 24V fresh water pumps
- Bilge pump system with manifold
- Electrical panel
- 4 Blower/extractor
- 1 automatic Co2 Fire System with ventilation shut of system
- Oil change pumps
- Fuel transfer pumps
- Engines synchronize
- Acme Power transformer
- Power Supply Adapter
- Idromar International Water Maker
- Quick Water Heater: Model B-3

Covers

- Cockpit Covers

Disclaimer

The Company offers the details of this vessel in good faith but cannot guarantee or warrant the accuracy of this information nor warrant the condition of the vessel. A buyer should instruct his agents, or his surveyors, to investigate such details as the buyer desires validated. This vessel is offered subject to prior sale, price change, or withdrawal without notice.

Исключения

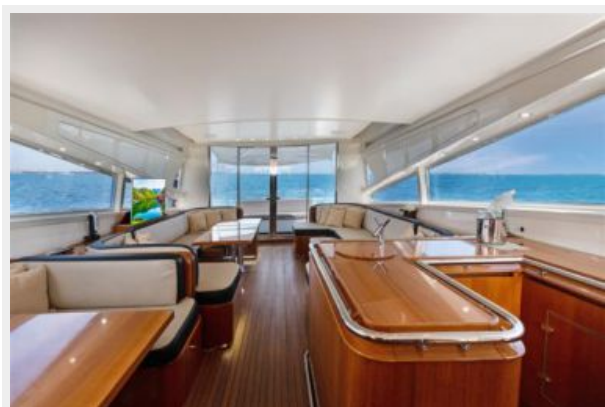
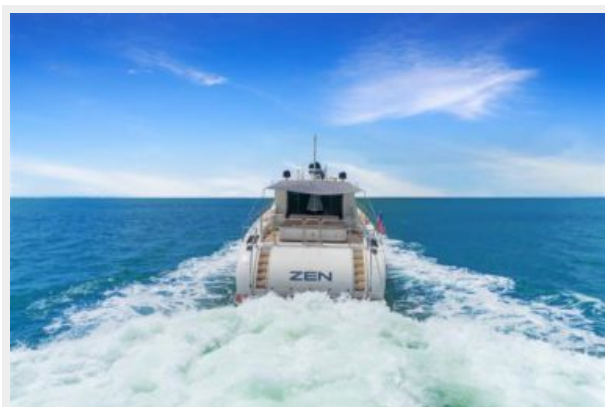
При продаже яхты исключаются личные вещи владельца.

Отказ от ответственности

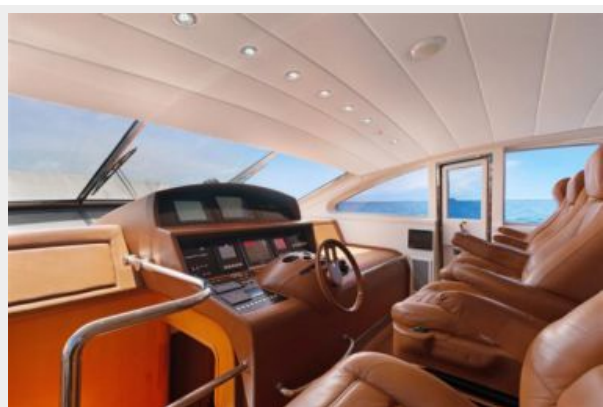
Компания предоставляет описание судна или яхты добросовестно, но не может гарантировать точность этой информации, а также не ручается за техническое состояние. Покупатель должен проинструктировать своих агентов или оценщиков исследовать представленную информацию более подробно, по собственному желанию. Продажа судна или яхты, изменение цены или снятие с продажи будет происходить без предварительного уведомления.

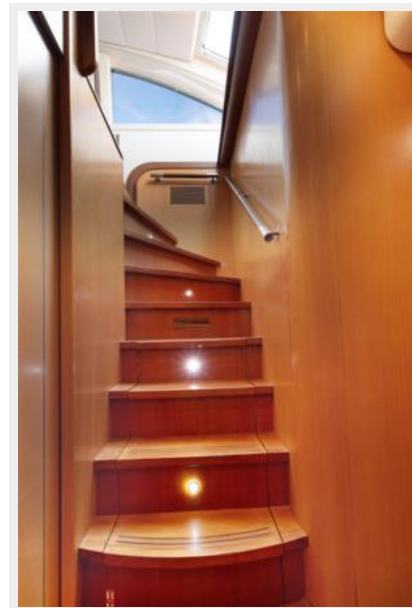
ФОТОГРАФИИ

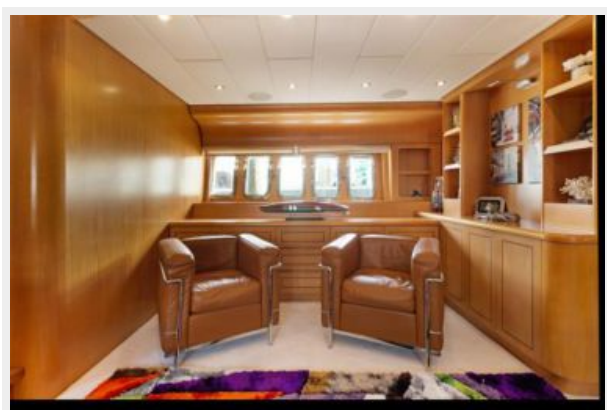


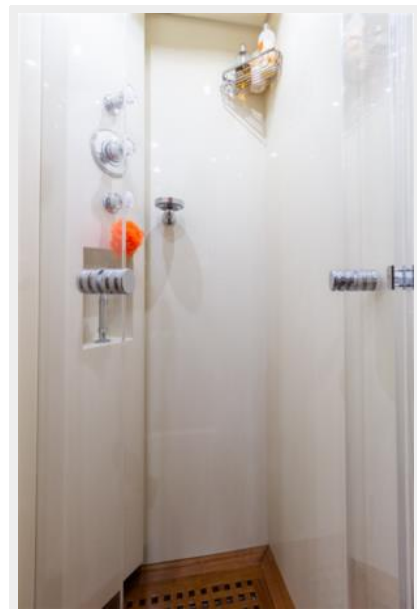








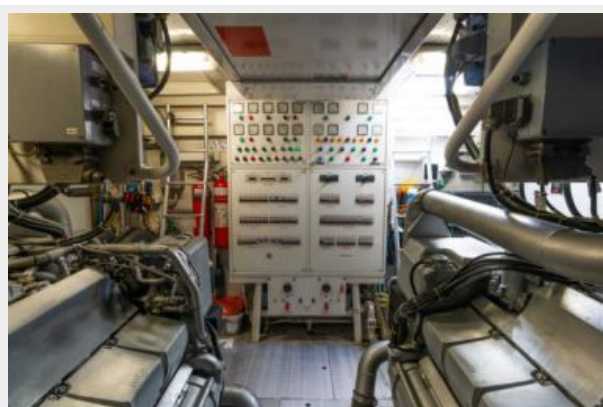
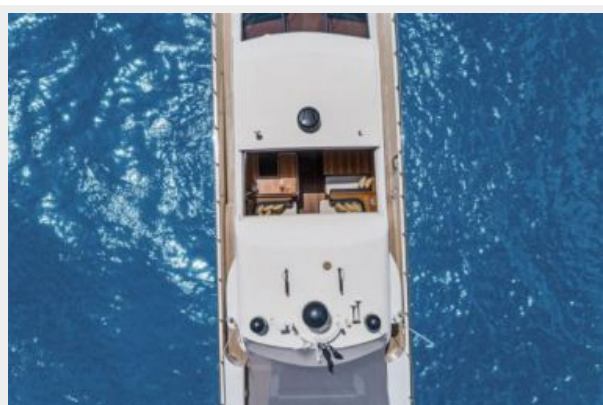














КОНТАКТЫ

Андрей Шестаков (Andrey Shestakov) – ведущий яхтенный брокер отдела продаж яхт и судов компании Shestakov Yacht Sales Inc. Официальный представитель Shestakov Yacht Sales Inc. для русскоговорящих клиентов в центральном офисе компании в Майами/Форт Лодердейл/Флорида/США.

Контактная информация

Email: andrey@shestakovyachtsales.com

Web: shestakovyachtsales.com

Телефоны

Краснодарский край: **+7(918)465-66-44**

США, Майами, Флорида: **+1(954)274-4435**

Время работы

Понедельник – Суббота: **9:00 - 21:00**
EDT

Воскресенье: **Закрето**

Адрес



Harbour Towne Marina, 850 NE 3rd St,
STE 213, Dania, FL 33004