

K-YACHTIC — SEA RAY



Builder: SEA RAY

Year Built: 2006

Model: Motor Yacht

Price: PRICE ON APPLICATION

Location: United States

LOA: 58' 0" (17.68m)

Beam: 16' 0" (4.88m)

Max Draft: 4' 3" (1.30m)

Cruise Speed: 24 Kts. (28 MPH)

Our experienced yacht broker, Andrey Shestakov, will help you choose and buy a yacht that best suits your needs **K-YACHTIC — SEA RAY** from our catalogue. Presently, at Shestakov Yacht Sales Inc., we have a wide variety of yachts available on our sale's list. We also work in close contact with all the big yacht manufacturers from all over the world.

If you would like to buy a yacht **K-YACHTIC — SEA RAY** or would like help answering any questions concerning purchasing, selling or chartering a yacht, please call **+1(954)274-4435**

TABLE OF CONTENTS

TABLE OF CONTENTS	2
SPECIFICATIONS	4
Basic Information	4
Dimensions	4
Speed, Capacities and Weight	4
Accommodations	4
Hull and Deck Information	4
Engine Information	5
DETAILED INFORMATION	6
58' Sea Ray 580 Sedan Bridge Motor Yacht K-YACHTIC	6
Exclusions	6
Disclaimer	6
PHOTOS	7
Transom	7
Starboard Profile	7
Flybridge Seating	7
Flybridge Seating	7
Flybridge Helm Controls	8
Flybridge Helm	8
Flybridge Helm Controls	8
Flybridge Refrigerator	8
Salon - Starboard Seating	9
Salon - Port Seating	9
Salon Facing Aft	9
Galley	9
Galley	9
Galley	9
Dinette Facing Forward	10

Dinette Facing Aft	10
Steps to Accomodations	10
Companionway to Master	10
Master Stateroom	10
Master Stateroom	10
Master Stateroom	11
Master Bathroom	11
Master Bathroom	11
Companionway to Forward Staterooms	11
VIP Stateroom	11
VIP Stateroom	11
Starboard Stateroom	12
VIP Stateroom	12
Guest Bathroom	12
Starboard Stateroom	12
Stacked Washer Dryer	13
Steps to Salon/Galley	13
CONTACTS	14
Contact details	14
Telephones	14
Office hours	14
Address	14

SPECIFICATIONS

Basic Information

Category: Motor Yacht

Sub Category: Flybridge

Model Year: 2006

Year Built: 2006

Country: United States

Fly Bridge: Yes

Cockpit: Yes

Dimensions

LOA: 58' 0" (17.68m)

Beam: 16' 0" (4.88m)

Max Draft: 4' 3" (1.30m)

Clearance: 19' 0" (5.79m)

Speed, Capacities and Weight

Cruise Speed: 24 Kts. (28 MPH)

Displacement: 51500 Pounds

Water Capacity: 150 Gallons

Holding Tank: 68 Gallons

Fuel Capacity: 700 Gallons

Accommodations

Total Cabins: 3

Total Heads: 2

Hull and Deck Information

Hull Material: Fiberglass

Engine Information

Engines: 2

Manufacturer: MAN

Model: 900CRM

Engine Type: Inboard

Fuel Type: Diesel

DETAILED INFORMATION

58' Sea Ray 580 Sedan Bridge Motor Yacht K-YACHTIC

Ultra clean 2006 Sea Ray 58 Sedan Bridge. 715 Hours on MAN 900CRM's. All MAN services completed in May 2019. MMDS Board update completed. New helm electronics including Raymarine eS127 Hybrid Touchscreen Chartplotters, HD Digital Color Radar, ST8002+ Autopilot, Sounder with fairing block and Engine Room Camera. New Polycarbonate Bridge enclosure, Fusion UD650 Stereo w/JL Audio Speakers and bridge ice maker. Sea Ray factory options include; bridge AC, separate stacked Washer and Dryer, Central Vac, KVH Satellite TV w/2 receivers, Hydraulic Swim Platform, Vetus Bow and Stern Thrusters, Bose Lifestyle Surround Sound System in Salon and MSR, Underwater lights, Bow Sun pads and beautiful high gloss black granite flooring in galley and dinette.

Exclusions

Owner's personal belongings.

Disclaimer

The Company offers the details of this vessel or yacht in good faith but cannot guarantee or warrant the accuracy of this information nor warrant the condition of the vessel. A buyer should instruct his representatives, agents, or his surveyors, to investigate such details as the buyer desires validated. This vessel or yacht is offered subject to prior sale, price change, or withdrawal without notice.

PHOTOS

Starboard Profile



Transom



Flybridge Seating



Flybridge Seating



Flybridge Helm**Flybridge Helm Controls****Flybridge Helm Controls****Flybridge Refrigerator**

Salon - Starboard Seating**Salon - Port Seating****Salon Facing Aft****Galley****Galley****Galley**

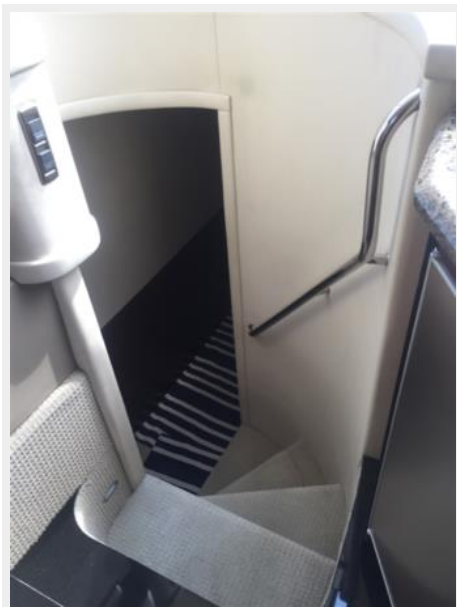
Dinette Facing Forward



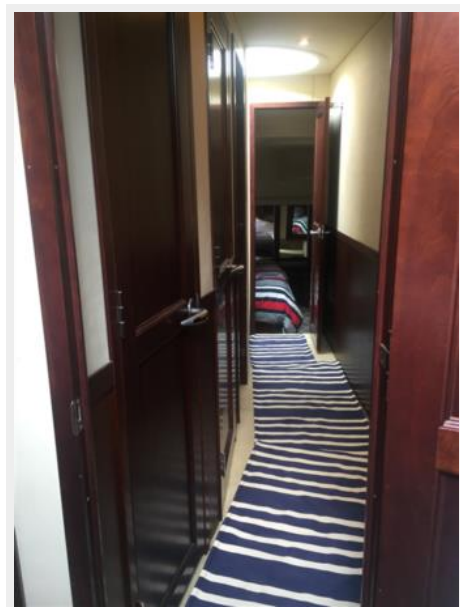
Dinette Facing Aft



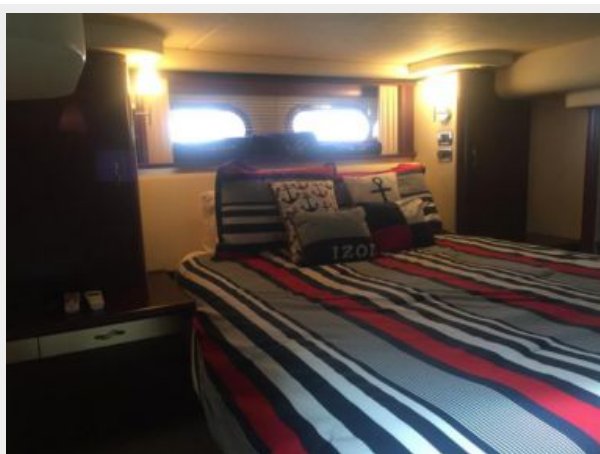
Steps to Accomodations



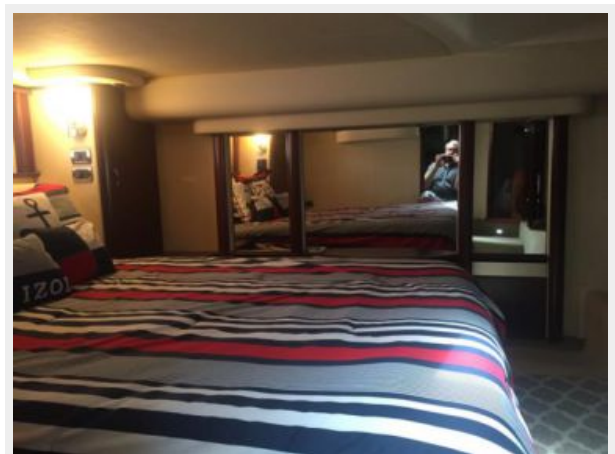
Companionway to Master



Master Stateroom



Master Stateroom



Master Stateroom



Master Bathroom



Master Bathroom



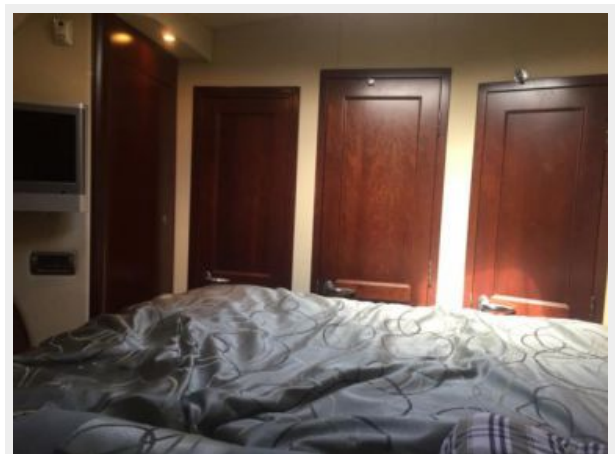
Companionway to Forward Staterooms



VIP Stateroom



VIP Stateroom



VIP Stateroom



Starboard Stateroom



Starboard Stateroom



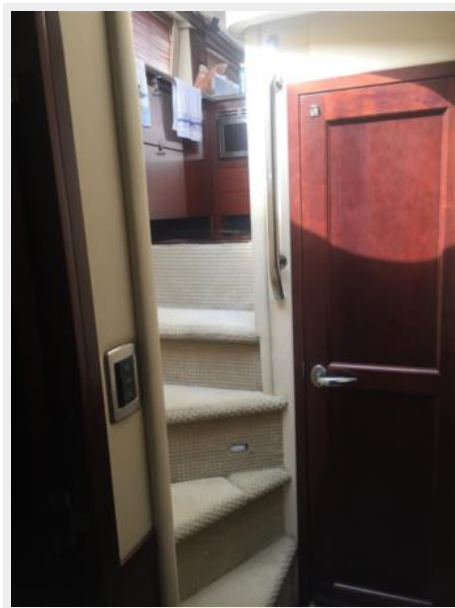
Guest Bathroom



Stacked Washer Dryer



Steps to Salon/Galley



CONTACTS

Andrey Shestakov, leading yacht broker of the sales department of Shestakov Yacht Sales Inc. Shestakov Yacht Sales Inc., the official representative of the Miami/Fort Lauderdale FL headquarters.

Contact details

Email: **andrey@shestakovyachtsales.com**

Web: shestakovyachtsales.com/en/

Telephones

USA: **+1(954)274-4435**

Office hours

Monday – Saturday: **9:00 - 21:00 EDT**

Sunday: **closed**

Address



Harbour Towne Marina, 850 NE 3rd St,
STE 213, Dania, FL 33004