

LADY BOSS — POST



Builder: POST

Year Built: 1989

Model: Motor Yacht

Price: PRICE ON APPLICATION

Location: Bermuda

LOA: 46' 0" (14.02m)

Beam: 15' 7" (4.75m)

Max Draft: 3' 6" (1.07m)

Cruise Speed: 24 Kts. (28 MPH)

Max Speed: 30 Kts. (35 MPH)

Our experienced yacht broker, Andrey Shestakov, will help you choose and buy a yacht that best suits your needs **Lady Boss — POST** from our catalogue. Presently, at Shestakov Yacht Sales Inc., we have a wide variety of yachts available on our sale's list. We also work in close contact with all the big yacht manufacturers from all over the world.

If you would like to buy a yacht **Lady Boss — POST** or would like help answering any questions concerning purchasing, selling or chartering a yacht, please call **+1(954)274-4435**

TABLE OF CONTENTS

TABLE OF CONTENTS	2
SPECIFICATIONS	4
Overview	4
Basic Information	5
Dimensions	5
Speed, Capacities and Weight	5
Accommodations	5
Hull and Deck Information	5
Engine Information	6
DETAILED INFORMATION	7
1989 Post 46'	7
1989 Post 46' Sport fishing yacht	7
Exclusions	7
Disclaimer	7
PHOTOS	8
boss 8	8
boss 7	8
boss 3	8
boss 4	8
boss 5	8
boss 6	8
boss lady 2	9
boss lady 3	9
boss lady 4	9
boss lady 5	9
boss lady	9
boss1	9
boss2	10

DSCN0972	10
DSCN0989	10
CONTACTS	11
Contact details	11
Telephones	11
Office hours	11
Address	11

SPECIFICATIONS

Overview

Boss Lady is a Mark 11 Post 46'. Very few hours as it has been used for Corporate clients only. All the cleats were removed and decks reinforced with backing plates and larger bolts, so that the boat can be anchored out in a hurricane, it has been through 4 hurricanes no problem. Most screws in the cabin have been removed and replaced with bolts to make it stronger.

From the stern going forward , it has a Fiberglas swim platform with a built in ladder. A Tuna door. Teak surroundings on the cockpit have been removed and replaced with black starboard trim . Zero maintenance. Below one hatch is a live bait tank. Flash freezer in cockpit, condition unknown. Engines under Salon floor no rust , however the cast iron tailpipe on the two turbo chargers need replacing or rebuilding. Present ones could be turned in as cores in the USA . Engines run well but do not go into full turbo boost. Generator 9 kW Westerbeake . Has a sound shield but does not require it, very quiet. Two fuel tanks that can hold approximately 630 gals.

Batteries are 8D gel cells . They were new two years ago. Above it is a Salon and Galley. Salon was reupholstered about two years ago in a off white leatherette. Shows well. Swivel chair need upholstering. Needs work. Galley includes 18 cubic foot refrigerator was replaced about 3 years ago. includes a microwave and a stove . Stainless steel sink. Has a flat screen TV in lounge. Central vacuum system works well. Clothes washer and dryer. Two cabins two heads, both with showers. Under the forward bunk is a Vetus bow thruster 8D battery. Bow thruster single blade so it can be easily cleaned.

Bow has anchor pulpit and capstan winch. . On deck is a 11' inflatable with outboard . Also has a life raft (fixed). Bridge has GPS . Needs ant. Needs Repair. SSB , VHF, Hailer , Radar. Rupp outriggers and center rigger , presently the boat is in Bermuda in lockdown. No sales tax . The boat needs bottom painting which has all been delayed because of the lockdown. Cushion on the bridge and Captain and mates chair need recovering. Throughout the whole boat every light works.

Basic Information

Category: Motor Yacht

Model Year: 1989

Year Built: 1989

Country: Bermuda

Vessel Top: Full / Tuna Tower

Dimensions

LOA: 46' 0" (14.02m)

Beam: 15' 7" (4.75m)

Max Draft: 3' 6" (1.07m)

Clearance: 19' 0" (5.79m)

Speed, Capacities and Weight

Cruise Speed: 24 Kts. (28 MPH)

Max Speed: 30 Kts. (35 MPH)

Water Capacity: 55 Gallons

Holding Tank: 55 Gallons

Fuel Capacity: 550 Gallons

Accommodations

Total Cabins: 2

Hull and Deck Information

Hull Material: Fiberglass

Engine Information

Engines: 2

Manufacturer: Detroit Diesel

Model: 692

Engine Type: Inboard

Fuel Type: Diesel

DETAILED INFORMATION

1989 Post 46'

The Boss Lady is an amazing 46' Post Sport Fishing yacht. This yacht is well maintained, upgraded, and turn key.

Additional information and Specifications to follow.

Located In Paget Bermuda

1989 Post 46' Sport fishing yacht

Boss Lady is a beautiful 46' Sport Fishing Yacht She is maintained to the highest standards. Turn key and ready for her next owner.

Additional details to follow.

Located in Paget Bermuda

Exclusions

Owner's personal belongings.

Disclaimer

The Company offers the details of this vessel or yacht in good faith but cannot guarantee or warrant the accuracy of this information nor warrant the condition of the vessel. A buyer should instruct his representatives, agents, or his surveyors, to investigate such details as the buyer desires validated. This vessel or yacht is offered subject to prior sale, price change, or withdrawal without notice.

PHOTOS

boss 8



boss 7



boss 3



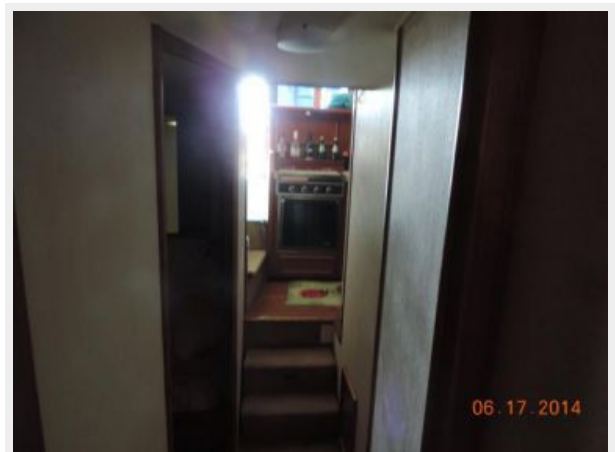
boss 4



boss 5



boss 6



boss lady 2



boss lady 3



boss lady 4



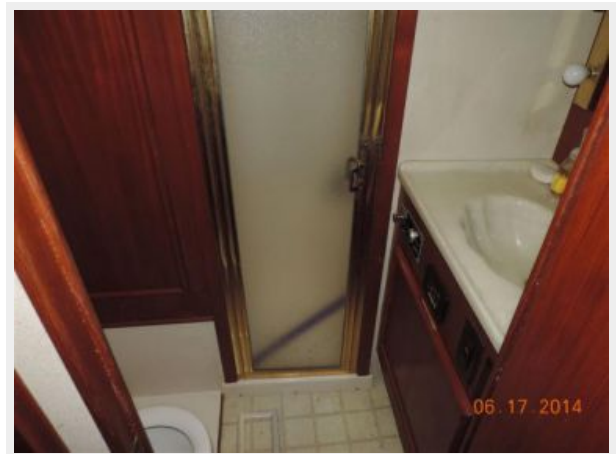
boss lady 5



boss lady



boss1



boss2



DSCN0972



DSCN0989



CONTACTS

Andrey Shestakov, leading yacht broker of the sales department of Shestakov Yacht Sales Inc. Shestakov Yacht Sales Inc., the official representative of the Miami/Fort Lauderdale FL headquarters.

Contact details

Email: andrey@shestakovyachtsales.com

Web: shestakovyachtsales.com/en/

Telephones

USA: +1(954)274-4435

Office hours

Monday – Saturday: **9:00 - 21:00** EDT

Sunday: **closed**

Address



Harbour Towne Marina, 850 NE 3rd St,
STE 213, Dania, FL 33004