

MISS MICHELLE — OCEAN ALEXANDER



Судостроитель: OCEAN ALEXANDER

Год постройки: 2012

Модель: Моторная яхта

Цена: ЦЕНА ЯХТЫ ПО ЗАПРОСУ

Местонахождение: United States

Длина общая: 90' 2" (27.48m)

Ширина: 22' 3" (6.78m)

Мин. осадка: 5' 6" (1.68m)

Макс. осадка: 6' 5" (1.96m)

Крейс. скорость: 14 Kts. (16 MPH)

Макс. скорость: 21 Kts. (24 MPH)

Купить **MISS MICHELLE — OCEAN ALEXANDER** а также выбрать подходящую вам яхту из нашего каталога яхт вам поможет опытный яхтенный брокер Андрей Шестаков. На сегодняшний день компания **Shestakov Yacht Sales Inc.** имеет большое количество яхт в собственном списке продаж, а также тесно сотрудничает со всеми крупными яхтенными производителями по всему миру.

Для того чтобы купить яхту **MISS MICHELLE — OCEAN ALEXANDER** а также проконсультироваться по любому вопросу связанному с покупкой, продажей, чартером яхт позвоните по телефону **+7(918)465-66-44**.

ОГЛАВЛЕНИЕ

ОГЛАВЛЕНИЕ	2
ХАРАКТЕРИСТИКИ	4
Обзор	4
Основная информация	4
Размеры	4
Скорость, вместимость и масса	5
Размещение	5
Корпус и палуба	5
Информация о двигателе	6
ПОДРОБНОЕ ОПИСАНИЕ	7
ABOUT MISS MICHELLE	7
CONSTRUCTION	9
MECHANICAL	10
PLUMBING	12
ELECTRICAL	14
AUDIO VISUAL	17
ACCOMODATIONS / INTERIOR DÉCOR	19
MAIN DECK I FLY BRIDGE	22
SKY LOUNGE / DINETTE	24
SALON	24
Исключения	24
Отказ от ответственности	24
ФОТОГРАФИИ	26
КОНТАКТЫ	32
Контактная информация	32
Телефоны	32
Время работы	32
Адрес	32

ХАРАКТЕРИСТИКИ

Обзор

MISS MICHELLE reveals a vessel of distinction, where careful thought was placed into every detail on board. With an LOA of 91.2 ft / 27.81 m, the interior design is by Ocean Alexander, with exterior styling by Ocean Alexander. MISS MICHELLE accommodates 8 guests in 4 staterooms, which are each appointed with the best in comfort and entertainment. Explore this top of the line yacht, built by luxury yacht builder OCEAN ALEXANDER, where meticulous work and creativity come together to create a floating sanctuary.

Основная информация

Тип судна: Моторная яхта	Модельный год: 2012
Год постройки: 2012	Год обновления: 2019
Вид обновления: Paint and interiors	Страна: United States
Верх: Enclosed P.H. W/Sundeck	Открытая палуба мостика: Да

Размеры

Длина общая: 90' 2" (27.48m)	Длина по ватерлинии: 76' 9" (23.39m)
Ширина: 22' 3" (6.78m)	Мин. осадка: 5' 6" (1.68m)
Макс. осадка: 6' 5" (1.96m)	Длина привального бруса: 92' 5" (28.17m)

Скорость, вместимость и масса

Крейс. скорость: 14 Kts. (16 MPH)

Дальность на крейсерской скорости:
850

Макс. скорость: 21 Kts. (24 MPH)

Дальность на макс. скорости: 450 Kts.

Водоизмещение: 209000 Pounds

Чистый вес: 173 Pounds

Вместимость воды: 650 Gallons

Вместимость сточного бака: 200 Gallons

Объем топливного бака: 3000 Gallons

Расход топлива: 50 Gallons

Размещение

Всего кают: 4

Всего коек: 5

Спальные места: 8

Всего ком. состава: 5

Каюта капитана: Да

Каюты экипажа: 2

Койки экипажа: 3

Спальных мест экипажа: 4

Комм. состав экипажа: 1

Корпус и палуба

Материал корпуса: GRP

Материал палубы: Teak

Комплектация корпуса: Semi-Displacement

Цвет корпуса: White

Отделка корпуса: Stainless Steel

Дизайнер экстерьера: Ocean Alexander

Дизайнер интерьера: Ocean Alexander

Информация о двигателе

Двигатели: 2

Производитель: MTU

Модель: MTU 10V2000 M94

Тип двигателя: Inboard

Тип топлива: Diesel

ПОДРОБНОЕ ОПИСАНИЕ

ABOUT MISS MICHELLE

OCEAN ALEXANDER 90 SKYLounge (2012/2019)

90-0006

Recently reduced in price, Miss Michelle is the best deal for a late model 90 Motor Yacht with Skylounge in the market today. Counting with a new paint job in 2019, all new interiors, 1000 engine service, engine room AC, new AC chiller units, etc. She is zero speed stabilized for ultimate comfort. Full time crew maintained with open checkbook.

HIGHLIGHTS

- 100 plus ft motor yacht volume in a 90 ft package
- Skylounge layout with forward-facing lounge and full-beam master stateroom
- 4-person lighted Jacuzzi w/custom fiberglass enclosure
- 2 Day Heads 1) in main deck and 2) in skylounge deck
- Aluminum i-beam core construction providing unrivaled safety and reliability
- Shallow draft for worry-free Bahamas cruising
- Zero Speed Stabilized
- Cockpit full driving station for easy docking
- Bow & Stern Thrusters
- 2/ 1,600-hp MTU 10V2000 M94
- Low engine hours considering the year/make of vessel
- Complete paint job (Hull & Super structure in 2019)
- New and refurbished teak decks in 2019
- Spacious and well-equipped outdoor areas
- Updated interiors in 2019
- Air Conditioning in the engine room

- **Meticulous owner with open checkbook**
- **Presents in excellent condition**

MISS MICHELLE reveals a vessel of distinction, where careful thought was placed into every detail on board. With an LOA of 91.2 ft / 27.81 m, the interior design is by Ocean Alexander, with exterior styling by Ocean Alexander. MISS MICHELLE accommodates 8 guests in 4 staterooms, which are each appointed with the best in comfort and entertainment. Explore this top of the line yacht, built by luxury yacht builder OCEAN ALEXANDER, where meticulous work and creativity come together to create a floating sanctuary.

The 30-year-old boatbuilder Ocean Alexander is introducing a 90-footer that looks and feels like a much larger yacht. A wide 22-foot beam produces an airy feel throughout the vessel, particularly in her main saloon where oversized windows create an interior that is awash in sunlight. Below, the four staterooms (each layout includes a spacious full-beam master suite); all staterooms in both plans will be beautifully accented with exotic sapele and burlwood cabinetry.

Miss Michelle's exterior lines are particularly interesting, as her enclosed flying bridge gives her the unmistakable look and feel of a true megayacht. This is the kind of boat any owner would be proud to own—graceful and sleek on the outside, spacious and elegant on the inside, she's really got it all. There's not much else you could ask for.

Owning a yacht is about getting away from the outside world, and most yachts are alluring in this aspect, but the Ocean Alexander 90' Skylounge is built to be silent, strong, and safe- so you can completely let go in confidence. The extent of naval engineering, craftsmanship, and refinement involved in an Ocean Alexander Skylounge is difficult to quantify in mere specifications and measurements.

Miss Michelle is an exceptional example of graceful bearing and obvious splendor that can only be experienced in person, but we will attempt to translate this into words. Ocean Alexanders are designed to cruise the Pacific on the west coast, so they're extremely sturdy. West coast cruisers go from rock to rock, while east coast cruisers go from dock to dock, so everything is heavier duty. For example, the anchor bulkhead is a collision bulkhead. Qualities like these keep the interior a lot drier, you never have water weeping through, and you know you and your guests are safe.

CONSTRUCTION

CONSTRUCTION

- Vinylester resin
- Carbon fiber infused composite hull and decks
- Airex® C70.90 PVC foam sandwich construction above temperature insulation water line (closed cell, cross-linked polymer foam w/ highest elongation in its class for great impact strength. Sound and temperature insulation w/ self-extinguishing properties
- Longitudinal and lateral fiberglass stringers self-filled with high-density foam
- Ocean Alexander employs various techniques to reduce sound and vibration. Focusing on providing a quiet and comfortable yachting environment through various proprietary techniques of controlling sound and noise transmission. Some of these techniques include, multiple insulation barriers including reflective absorptive materials, dampening materials, air pockets and flexible and isolation mounts. Ultimately resulting in vibration/sounds levels that are industry leading and at times 1/2 to 1/10 of ISO-6954 requirements.
- Fiberglass with infusion and "vacuum bag technology"
- Reinforced collision bulkhead
- Reinforced aluminum I-beam
- White gelcoat on exterior(white PU paint for hull)
- Frameless window
- All exterior hardware to be S/S 316 or better and to manufacturer requirements
- Watertight bulkheads with further sound and temperature insulation

HULL/ BOTTOM:

- Black boot top stripe
- Interior structural components all bonded to hull
- Two coats of Seahawk primer, hi-build epoxy barrier coat and covered with three coats of Seahawk self-polishing bottom paint
- Fiberglass rub rail w/ S/S striking plate
- One storage in forward bilge

DECK/ PILOTHOUSE:

- White non-skid fiberglass decks
- Teak swim platform w/ teak steps
- Teak deck from cockpit to sidewalk materials,
- Teak deck for cockpit
- S/S transom gates for pets/children protection
- Deck, superstructure and Flybridge with aluminum I-beam reinforcements
- Swimming ladder
- Sunbrella® fabric (Berenson Tuxedo #8521) on outside cushions (upholstered in Florida)

MECHANICAL

MECHANICAL**MAIN ENGINES:**

- MTU® 10V2000 M94 1600HP engines
- Engine alarm system, for low oil pressure and high-water temperature
- S/S engine beds
- Lube oil change system for engines and generators with approximately 45-gallon lube tank
- Delta T intake/ exhaust fans with variable frequency drives shall be mounted to facilitate the pushing and/or pulling of air through the machinery spaces and the providing of a high rate of air exchange. Ducts shall have fire dampers installed with manual/ automatic triggering that shall be tied into the machinery shut down circuits. Ducts in way of interior living space shall be insulated and soundproofed. System of Delta-T water separator grills used on intake and exhaust sides of system.
- Underwater exhaust specifically designed for Monk/Hageman tunnels
- Stainless steel rails on side of engine and stainless steel engine mounting plates
- Stabilizer with power take-off from both engines

STEERING/ CONTROL:

- Hydraulic steering system by Hynautic/Teleflex power steering system
- Steering control station with complete instrumentation
- S/S rudders w/integrated zinc plates
- Dripless seal for rudder post
- High performance computer designed and machined NiBrAl propeller - Class "S"
- Wood steering wheel inside & S/S on FB
- Maintenance free "dripless" seals for engine shaft packing glands
- Propeller shaft Aqua 22HS. 22HS is a high-grade authentic alloy stainless steel that provides superior corrosion resistance (comparable to Aqua 22) along with excellent toughness and high strength (comparable with Aqua 17). A no compromised approach adopted by the navies around the world
- Three electrical Stidd® helm seats (Skylounge w/ white 391-1256 PAPHYRUS)

GENERATOR:

- (2) Kohler®53 KW (110V/220V@60HZ)
- Generator exhausts to be water-drop type per "Centek", "Marine Exhaust Co." or equal. Generator set resiliently mounted and installed with sound shield

WINDLASS / MOORING:

- Hydraulic windlass, Maxwell® VWC4000C x 2
- Stainless steel plow type anchors 140 lbs w/ 300ft anchor chain (1/2" HT) & chain stoppers
- Integral roller and chain stopper with Maxwell® anchor winches
- Two Maxwell® VC2500 vertical electric rope winches for aft deck
- Reinforced anchor platform and anchoring system
- Chain counter

THRUSTER/ STABILIZERS:

- ABT® hydraulic bow 40HP and stern 40HP thruster
with proportional control
- Custom "Two Fin" (12 sq. ft. x 2) hi-performance ABT®
- ABT® hydraulic stabilizers w/ zero speed system (will reduce speed by 1~2knots)

OTHER:

- Spare conduit running from engine room to MSR, crew, galley etc..
- Color-coded piping system for easy identification
- Hydraulic I 750lbs yacht crane (21,000ft-lb 3 function hydraulic retracting boom, rotation and extension)
- Fire Boy™ Fire extinguisher system with engine- shutdown feature
- Kahlenberg™ triple heavy-duty horn
- All engine room and machinery spaces shall be primed winches and top coated with polyurethane paint system.
- Hepworth® heavy-duty commercial grade pantograph windshield wipers & washers w/ intermittent function
- Detailed stringers in engine room & lazarette
- S/S cap on transverse stringers in central walkway
- 2HP air compressor in engine room w/ multiple quick disconnect outlets
- Zinc anodes on hull bottom under engine room
- Humphree® Interceptor with automatic trim stabilizer optimization system (ATOS)

PLUMBING**PLUMBING****FRESH WATER SYSTEM:**

- High volume AC fresh-water pumps

- 2mm thickness 316 S/S water tank w/ sight gauge
- Fresh-water outlet with hose for engines & generator
- Fresh-water system in 120VAC and with 24VDC backup pump
- Cold fresh-water wash down at bow, stern and boat deck

HOT WATER HEATER:

- Two 30-gallon water heater with high density fiberglass insulation w/ high efficiency heating element

FUEL SYSTEM:

- 4.5mm thickness 5052 Aluminum fuel tanks with sight gauges and tested to International Standards 33CFR 510(a) w/ high and low fuel level alarm system
- Dual Racor® fuel/water separator with Y-valves for engine & generator
- Gulfcoast™ Fuel polishing system based on US Military Abrahams-MI Tank design
- Sight gauges for all tanks

SEWAGE TREATMENT SYSTEM:

- Headhunter™ waste treatment system (50Gal/day)
- Grey water tanks for showers

BILGE/ DISCHARGE:

- Oversized drains to overboard
- Automatic bilge pump - The vessel shall be outfitted with automatic bilge pump with manual and automatic switches in each space as divided by watertight bulkheads. High water alarms will be mounted in each of these bilge zones
- High water bilge alarm at every Rule® bilge pump station
- One manual bilge pump

- Dry bilge area arrangement in center engine room

DECK/ FLYBRIDGE:

- Dock-side water inlet
- Both sides filler for fuel tanks with individual tank vents

ELECTRICAL

ELECTRICAL

AC/DC SYSTEM:

- AC outlets throughout
- Octoplex NMEA 2000 electrical control system. Based on military technology for remote activation, control and status reporting of all AC and DC breakers. Monitors all power sources (AC and DC) for voltage, frequency and amperage abnormalities and provide visual and audio alerts. Includes enhanced circuit breaker functionality with no-load indication, dimming and usage information with touch screen monitors that is user reconfigurable. Brown-out configurable control through auto load shedding is included where operator designated equipment (eg navigation and other essential systems) remains powered-on while automatically switching other systems off. Octoplex NMEA 2000 Vessel system monitor system. Provides main access doors, tank level, bilge level and battery monitoring of current, voltage and temp, it is networked into NMEA 200
- Octoplex® system AC/ DC sub panels in galley, pilot house, and crew areas
- Additional Octoplex screen for master stateroom
- All primary AC & DC electrical wiring is appropriately labeled throughout the yacht
- GFI (II0V) AC outlet with SmartLock feature for error protection which exceeds UL requirements
- AC duplex receptacles throughout the boat with GFI protection in dedicated areas
- 24V DC system throughout boat
- 12V DC generator starting system
- 12V & 24V DC electronic system

AIR CONDITIONING:

- Cruisair® chilled water system air conditioning w/ air handlers for central air conditioner, 3 units, total 201K BTU (Reverse Cycle capable for operating down to 40). REPLACED NEW IN 2019
- Refrigerant type is accepted worldwide under the Montreal Protocols
- Dedicated engine room air conditioning

SHORE POWER CONNECTER:

- Shore power receptacle 2 x 100 AMP on transom w/115ft cablemaster
- Isoboost package (100AMP+ 100AMP)

LIGHTING:

- 24V lights in all compartments
- 24V LED lights (Aerospace quality, specially tuned color temperature for Ocean Alexander that last over 100,000+ hours)
- Marine explosion-proof fluorescent lights in AC and DC configurations
- Convenience lights, lower deck and Fly Bridge
- Flooding light at back of boat deck
- Reading lights in VIP headboard
- International navigation lights
- All staterooms, salon, pilothouse and Flybridge w/ indirect lighting
- ACR searchlight (RCL100D/24V) with remote in skylounge
- Spreader lights under wing mast
- Four Underwater lights

CHARGER:

- Mastervolt®24V/100A house battery charger
- Mastervolt® battery charger (engine/engine computer: 24V/60A, genset: 12V/25A)

BATTERY:

- Heavy-duty batteries (house banks: 1100 AH)
- engine batteries: 550AH
- genset batteries: 490AH
- Battery paralleling system w/ control switch
 - Service battery switch
 - AGM Batteries with 40_ to 140_ operating temp and industry leading low self-discharge rates 1 to 3% operation

BONDING SYSTEM:

- Bonding system throughout
- The vessel's bonding and grounding systems shall include copper straps secured to the hull and running the full length of the vessel parallel to centerline. Engines, generators, metallic through hulls, strainers, and pump bodies shall be connected to the bonding strap using-8 AWG wire minimum or equivalent

FURUNO NAVIGATION PACKAGE

- FURUNO MFD Black Box Processors
- FURUNO 6Kw 6ft Open Array Dual Ranging Radar
- FURUNO Class B AIS Integrated into Radar and Chart Plotter (CHARTS UPDATED IN 2019)
- FURUNO Digital Sounder with 1Kw B260 Broadband Transducer
- 19" Marine Monitors Pilot House and Fly Bridge
- AXIS IP Camera in Engine Room and Aft Deck
- ICOM 604 VHF PH and FB

- Simrad AP28 Autopilot System at Pilot House and Fly Bridge
- KVH HD7 Control Panel Satellite HDTV System
- Maretron DSM250 NMEA 2000 Display Pilot House, Fly Bridge and Master Cabin
- Maretron NMEA 2000 GPS, Depth Sounder and Weatherstation
- Nobeltec Navigation Computer Software (UPDATED IN 2019)
- UPS electrical protection for navigation computer
- Direct TV receiver with UPS

OTHER:

- Marine-grade, tinned copper wiring
- Vimar™ switches and outlets
- Ritchie compass 5

AUDIO VISUAL

AUDIO VISUAL

MASTER STATEROOM:

- LCD 42" TV with Professional A/V System with IR repeater (Dolby true HD DTS-HD XM/Sirius capable w/multiEQ that provides virtually perfect acoustical environment for up to six individual seating locations , also detects "out of phase inner" auto compensable to match w/ subwoofer & speakers. HDMI 1.3 provides high bandwidth HD video output) for true color HD reproduction.
- Middle-Atlantic Media Rack for A/V equipment (Professional Studio quality rack provides ease in accessing various A/V equipment. Reduces labor, damage w/ heavy duty 13-gauge 8/8 and interlocking corners)
- Furman power conditioner (featuring multi-stage linear amplifier tech & extreme voltage shutdown for yacht's (Professional Studio quality rack provides ease in unstable shore/genset power)
- One Subwoofer

SKY LOUNGE:

- LCD 42" TV with Professional A/V System with IR repeater (Dolby true HD DTS-HD XM/Sirius capable w/multiEQ that provides virtually perfect acoustical environment for up to six individual seating locations, also detects "out of phase inner" auto compensable to match w/ subwoofer & speakers. HDMI 1.3 provides high bandwidth HD video output) for true color HD reproduction
- Middle-Atlantic Media Rack for A/V equipment (Professional Studio quality rack provides ease in accessing various A/V equipment. Reduces labor, damage w/ heavy duty 13-gauge S/8 and interlocking corners)
- Furman power conditioner (featuring multi-stage linear repeater amplifier tech & extreme voltage shutdown for yacht's unstable shore/genset power)

SALON:

- LCD 52" TV with Professional A/V System with IR repeater (Dolby true HD DTS-HD XM/Sirius capable w/multiEQ that provides virtually perfect acoustical environment for up to six individual seating locations, also detects "out of phase inner" auto compensable to match w/ subwoofer & speakers. HDMI 1.3 provides high bandwidth HD video output) for true color HD high bandwidth HD video output) for true color HD reproduction
- Middle-Atlantic Media Rack for A/V equipment (Professional Studio quality rack provides ease in accessing various A/V equipment. Reduces labor, damage w/ heavy duty 13-gauge S/8 and interlocking corners)
- Furman power conditioner (featuring multi-stage linear repeater amplifier tech & extreme voltage shutdown for yacht's unstable shore/genset power)
- One Subwoofer

CREW QUARTERS:

- LCD 22" TV & Blu-Ray disc player on Capt. & crew cabins wall
- Audio stereo and video system w/ IR repeater eye
- Middle-Atlantic Media Rack for A/V equipments

DINETTE / AFT DECK

- LCD 26" TV in dinette
- LCD 26" TV in dinette on wall (Aft Deck)

VIP/ GUEST STATEROOM

- LCD 22" TV on wall and Blu-Ray disc player on port wall beside door (VIP)
- LCD 22" TV on wall and Blu-Ray disc player (Port Guest)
- LCD 22" TV on wall and Blu-Ray disc player (Starboard Guest)
- Audio stereo and video

ACCOMODATIONS / INTERIOR DÉCOR

ACCOMODATIONS / INTERIOR DÉCOR

INTERIOR DECOR:

- Sapelli paneling and cabinetry in semi-gloss
- 4 Stateroom Version
- High quality European door locks
- Cedar-lined, hanging locker with auto lighting
- Majilite Fabric for lower walkway walls
- Painted plywood flooring prepared for carpet, except wood flooring in PH, head and galley
- Concealed hinges throughout interior cabinets w/ auto soft-closing function that prevents a kitchen cabinet door from slamming, as it slowly and silently brings the door to a closed position
- Ergonomically designed mattresses and settees
- Mattresses for berths (independent his/her construction allowing for disturb free movement during sleep)
- Maytag™ 2400AWW stacked washer/ dryer (Commercial quality, Energy star washer/dryer w/ generous 2.4 cu. ft. capacity) in lower foyer
- Refrigerator and icemaker in lower foyer

MASTER STATEROOM:

- "Floating" King-sized berth
- Two "floating" nightstands with granite countertops
- Bureau w/ chest of drawers at starboard side and Burl accents
- Hidden safe in hanging locker
- Fixed windows on hull side
- Painted floor prepared for carpet
- Custom headboard with recessed indirect lighting
- Cedar-lined, twin full-height hanging locker with automatic lighting

CREW QUARTERS:

- Kitchenette (microwave & refrigerator)
- Sapelli paneling and cabinetry
- Double berth on crew cabin
- Cedar-lined hanging locker with automatic lighting
- Storage locker
- Amtico flooring

HEADS:

- Sapelli paneling and cabinetry
- Granite heated flooring in VIP & port guest
- Granite or marble counter tops with china sink
- Cifial™ & Grohe™ sink faucets and Grohe™ for shower
- Seamless fiberglass stall shower w/ one-piece glass door. Industry leading seamless one-piece shower stall design provides long term protection against moisture, water intrusion behind the shower panels leading to foul odors and water damage
- Cabinet with mirror door above sink

- Air extraction in each head shall be by low noise extraction fans
- Tecma™ toilet system throughout
- Custom bathroom fixtures
- S/S rectangular port lights w/screens
- Granite or marble countertops and back splash in heads with Cifial™ & Grohe™ faucets and bone china sink
- Fiberglass seamless stall shower w/one-piece glass door
- Crew quarters w/private head, shower and refrigerator

MASTER HEAD:

- Twin his-and-hers heads
- Sconces with dimmers above sink
- Lockers beside heads
- Clear glass wall between shower room and head
- Granite wall in shower and heated floor in head

GALLEY:

- Sapelli panel and cabinetry
- Galley storage cabinetry w/hidden hinges
- Granite countertops
- Wood flooring
- Franke™ professional series kitchen sink w/ pull out tap
- Exhaust blower
- Overhead dish locker fwd & aft
- 30" Jenn-Air™ electric cook top
- 24" Gaggenau electric oven

- Sub-Zero® Refrigerator/ freezer
- Whirlpool™ garbage disposal
- 30" JennAir Over-the Range Microwave with Speed-Cook Convection oven with exhaust blower
- 24" Fisher/ Paykel™ dishwasher
- 15" Whirlpool™ trash compactor
- Seagull™ water purifier (ADEX design award winner w/ filtration to 0.1 microns & EPA certification for sink microbiological purification)

VIP/ GUEST STATEROOMS:

- Queen-sized berth w/ inner spring mattress
- Sapelli paneling and cabinetry
- Painted floor prepared for carpet
- Drawers under berth
- Cedar-lined hanging locker with automatic lighting
- S/S rectangular port lights w/screens in port guest
- Two "floating" nightstands with granite or marble tops in port guest

MAIN DECK I FLY BRIDGE

MAIN DECK

- 2" elliptical 316 Stainless steel handrails & stanchions, main deck 1-1/2" on fiberglass
- 316 stainless-steel cleats and port lights
- Circular fiberglass stairs to fiberglass from cockpit
- Electric stainless-steel sliding doors for salon
- Two teak flag poles, fore and aft
- Teak and stainless swim ladder, foldable
- Watertight door on transom for access to engine room/ crew quarters

- Cabinet for storage, tackle center, wet bar refrigerator and LCD 22" TV
- Side boarding doors
- Fiberglass stairway up to Flybridge
- Cockpit docking control
- High bulwark w/ flush-mounted deck lights, bulwark side doors for boarding
- Side boarding gates in cockpit and midship
- Tempered and safety glass (1/2" in fwd pilot house, 3/8" other areas) which is 80% stronger than normal glass and with a safety sandwich for protection against broken shards. Glass is Low-E glass which increase energy efficiency by 25%+ and is UV stabilized for reduction of fading and degradation of a yacht's interior and health of occupants due to harmful UV rays
- Humphere Interceptor with automatic trim optimization system (ATOS)

FLY BRIDGE AND SKY LOUNGE:

- Skylounge w/ dual hatches for ventilation and light
- Skylounge w/ day head & air condition and full size Stidd electric admiral series seats)
- White non-skid fly bridge decks
- Cabinet including wet bar, Sub Zero™ wine cooler w/ solid panel door and storage (Skylounge)
- 24" Electri-Chef™ electric barbecue
- Custom sun pad on fly bridge (w/ storage under)
- Boat deck sliding hatch
- Wood valance board
- Wood or fiberglass table
- Raised settee with table
- Day head for skylounge layout
- Chart locker (Skylounge)
- 4-person lighted Jacuzzi w/custom fiberglass enclosure shards.
- Electric awning in skylounge covering after area

SKY LOUNGE / DINETTE

- Sunken and extended dash with instrumentation (Skylounge)
- U-shaped dinette (Skylounge)
- Wood dinette table & computer desk
- Windshield defrosters
- Phantom screen (for insects + pollen protection) with dedicated wood box for door
- Watertight doors to side deck
- Wood flooring in forward dinette
- Pantograph doors in Pilothouse

SALON

- Sapelli paneling and cabinetry
- Painted floor prepared for carpet
- Cabinets port and starboard of salon
- Custom designed window mullion
- Decorative ceiling treatment
- Phantom screen (for insects + pollen protection) with dedicated wood box for door
- Sub Zero wine cooler (NEW in 2019)
- Sub Zero freezer drawers

Исключения

При продаже яхты исключаются личные вещи владельца.

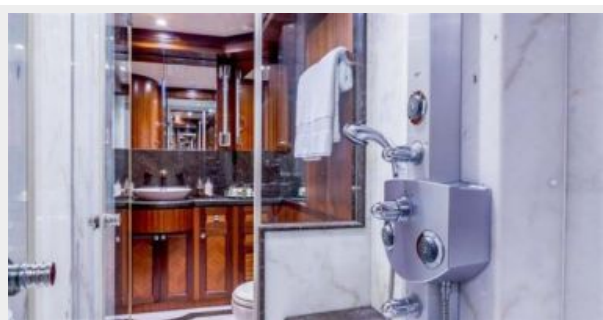
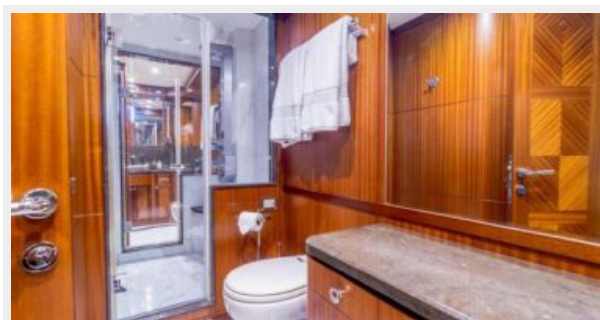
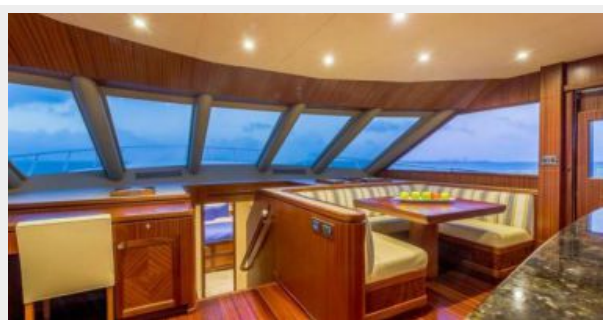
Отказ от ответственности

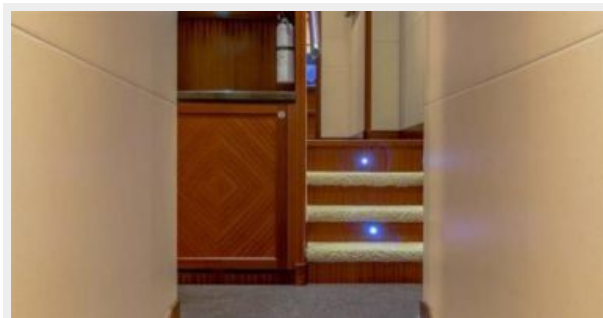
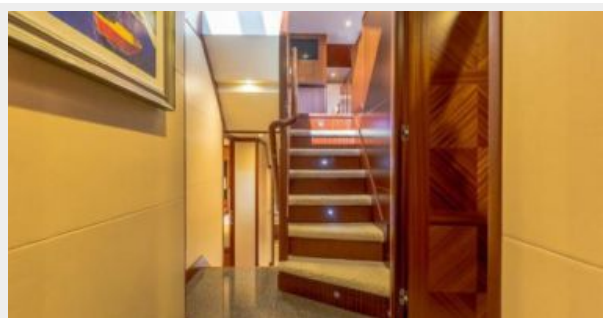
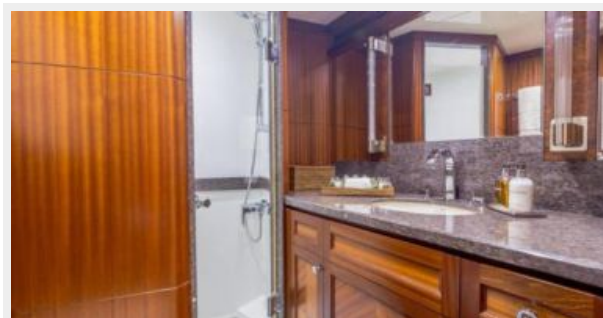
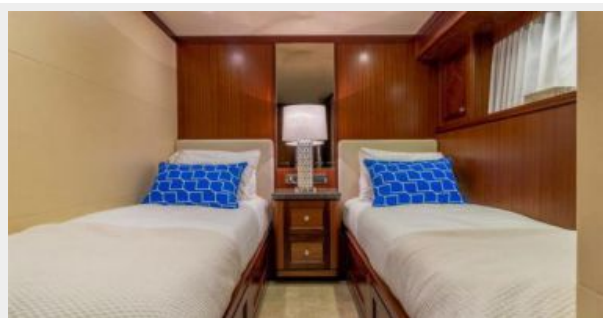
Компания предоставляет описание судна или яхты добросовестно, но не может гарантировать точность этой информации, а также не ручается за техническое состояние. Покупатель должен проинструктировать своих агентов или оценщиков

исследовать представленную информацию более подробно, по собственному желанию. Продажа судна или яхты, изменение цены или снятие с продажи будет происходить без предварительного уведомления.

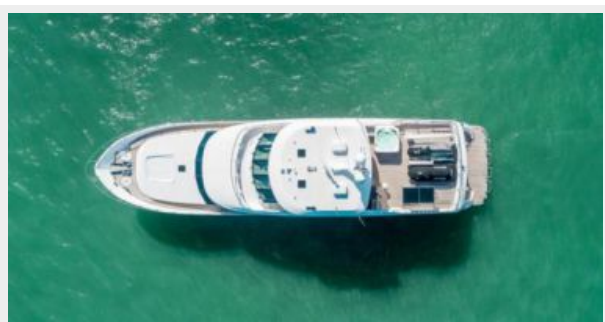
ФОТОГРАФИИ

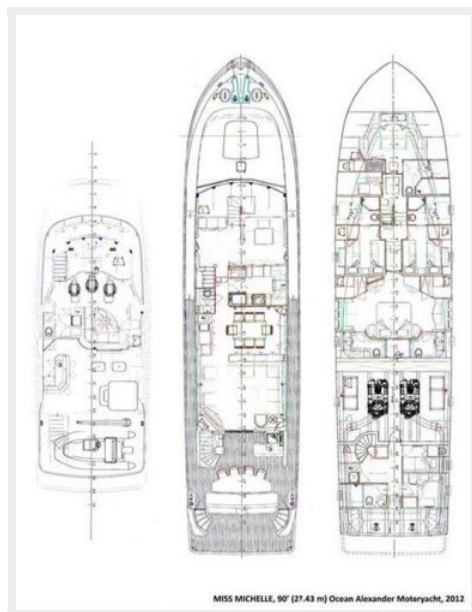












КОНТАКТЫ

Андрей Шестаков (Andrey Shestakov) – ведущий яхтенный брокер отдела продаж яхт и судов компании Shestakov Yacht Sales Inc. Официальный представитель Shestakov Yacht Sales Inc. для русскоговорящих клиентов в центральном офисе компании в Майами/Форт Лодердейл/Флорида/США.

Контактная информация

Email: andrey@shestakovyachtsales.com

Web: shestakovyachtsales.com

Телефоны

Краснодарский край: **+7(918)465-66-44**

США, Майами, Флорида: **+1(954)274-4435**

Время работы

Понедельник – Суббота: **9:00 - 21:00**
EDT

Воскресенье: **Закрето**

Адрес



Harbour Towne Marina, 850 NE 3rd St,
STE 213, Dania, FL 33004