

KABRIS #100 — J BOATS



Судостроитель: J BOATS

Год постройки: 2017

Модель: Cruising/Racing Sailboat

Цена: ЦЕНА ЯХТЫ ПО ЗАПРОСУ

Местонахождение: United States

Длина общая: 29' 0" (8.84m)

Ширина: 9' 6" (2.90m)

Макс. осадка: 6' 6" (1.98m)

Купить Kabris #100 — J BOATS а также выбрать подходящую вам яхту из нашего каталога яхт вам поможет опытный яхтенный брокер Андрей Шестаков. На сегодняшний день компания Shestakov Yacht Sales Inc. имеет большое количество яхт в собственном списке продаж, а также тесно сотрудничает со всеми крупными яхтенными производителями по всему миру.

Для того чтобы купить яхту Kabris #100 — J BOATS а также проконсультироваться по любому вопросу связанному с покупкой, продажей, чартером яхт позвоните по телефону **+7(918)465-66-44**.

ОГЛАВЛЕНИЕ

ОГЛАВЛЕНИЕ	2
ХАРАКТЕРИСТИКИ	5
Обзор	5
Основная информация	5
Размеры	5
Скорость, вместимость и масса	6
Размещение	6
Корпус и палуба	6
Информация о двигателе	6
ПОДРОБНОЕ ОПИСАНИЕ	7
Overview	7
Исключения	12
Отказ от ответственности	13
ФОТОГРАФИИ	14
2.jpg.jpg	14
3.jpg	14
4.jpg	14
5.jpg	14
10.jpg.jpg	14
11.jpg.jpg	14
10a.jpg	15
11a.jpg	15
11a2.jpg	15
11b.jpg	15
11d.jpg	15
11c.jpg	15
12.jpg.jpg	16
12a.jpg	16

13.jpg.jpg	16
13a.jpg	16
14.jpg.jpg	16
14a.jpg.jpg	16
14a2.jpg	17
15.jpg.jpg	17
15a.jpg.jpg	17
16.jpg.jpg	17
16a.jpg	17
17.jpg.jpg	17
17a.jpg	18
18.jpg.jpg	18
18a.jpg	18
19.jpg.jpg	18
19a.jpg	18
20.jpg.jpg	18
20a.jpg	19
21.jpg	19
22.jpg	19
23.jpg	19
24.jpg	19
25.jpg	19
26.jpg	20
27.jpg	20
28.jpg	20
29.jpg	20
30.jpg	20
31.jpg	20
32.jpg	21

33.jpg	21
34.jpg	21
35.jpg	21
36.jpg	21
37.jpg	21
38.jpg	22
39.jpg	22
41.jpg	22
40.jpg	22
42.jpg	22
43.jpg	22
44.jpg	23
45.jpg	23
46.jpg	23
47.jpg	23
48.jpg	24
КОНТАКТЫ	25
Контактная информация	25
Телефоны	25
Время работы	25
Адрес	25

ХАРАКТЕРИСТИКИ

Обзор

Overview:

Fresh Water Boat, sailed 6 weeks each summer on Lake Of Woods, Ontario. Kept on a floating dock at a private island home. Stored on a trailer indoors each winter. One of the last J88's built in the US. Has just about every option imaginable and still like new.

Factory Options:

- White hull
- Light gray non-skid
- Black boot stripe
- Two AGM batteries
- Cockpit bulkhead opening ports
- Cockpit seat cushions (four, white)
- Lifeline Covers (white)
- Opening Lifeline Gates
- Black Sunbrella with white piping on interior cushions
- V Berth package and cushions
- Cabin settee cushions with seatbacks

Основная информация

Тип судна: Cruising/Racing Sailboat

Модельный год: 2017

Год постройки: 2017

Страна: United States

Размеры

Длина общая: 29' 0" (8.84m)

Ширина: 9' 6" (2.90m)

Макс. осадка: 6' 6" (1.98m)

Длина привального бруса: 29' 0" (8.84m)

Скорость, вместимость и масса

Водоизмещение: 4990 Pounds

Размещение

Всего кают: 1

Всего ком. состава: 1

Корпус и палуба

Материал корпуса: Fiberglass

Информация о двигателе

Двигатели: 1

Производитель: Yanmar

Тип двигателя: Sail Drive

Тип топлива: Diesel

ПОДРОБНОЕ ОПИСАНИЕ

Overview

Race Bottom:

- Black Petit Vivid Race Bottom over Epoxy Barrier Coat (done by International Marine, Bristol RI)

Sails:

- North 3di black sails
- Class Mainsail
- A/P jib
- Light jib
- A2 spinnaker (hot pink)
- A3 spinnaker (lime green)
- Code 0, Mylar, with custom retractable bobstay

B&G instruments:

- Zeus 3 chart plotter (12 inch) in swing arm in companionway
- 3 - 2020 displays on the mast
- 3 - Triton displays on a seahood (custom made for the boat by CCF)
- 1 - Triton display on sidewall of cockpit by the traveler. This enables the helmsman to change data and displays on any instruments from the helm position.
- NMEA 2000 network integrating chart plotter and instruments
- B&G VHF with separate remote cockpit handset.
- Fusion Bluetooth stereo with speakers in cockpit.
- Sirius XM antenna (low profile dome) integrated with network and chart plotter

Triad Trailer:

- 2017 trailer. Has never been on the road, was trucked on a flatbed to original home and again to RCR.
- Deep drop keel box version with Lift On/Off Package
- 4 wheel electric brakes
- 2500lb capacity front jack with foot rest
- 8 hull support screw jacks with marine grade carpet
- 6 tie down loops

- 2 Ratchet Straps
- LED light package
- Spare tire and mount

Additional:

- Safety Gear
- Black Mainsail Cover
- Lightweight Anchor

Construction:

- J/88 hull & deck infusion molded with biaxial and unidirectional E-glass fabrics and balsa core in the hull for rugged durability and Corecell foam core in the deck for light weight. High density core material and additional glass reinforcements are placed in way of highly loaded hardware and components. All laminates are engineered and built to required ISO structural standards.
- Molded internal bulkheads and liners finished with gelcoat, bonded and/or tabbed to the hull and/or deck.
- White gelcoat hull with single boot stripe.
- 10 year transferable warranty against osmotic hull blistering, 5 year structural warranty.
- Infused GRP molded structural grid with longitudinal and transverse keel support beams. One large cockpit seat storage locker.
- Open transom for easy access with lightweight ORC transom safety ladder.
- High strength, inward turning and overlapping hull to deck joint bonded with structural

adhesive.

- White gelcoat deck with molded non-skid on horizontal deck surfaces.
- Molded ISO/ORC height foredeck toe-rails on deck.
- Large self-draining cockpit with molded secure helmsman footbraces in cockpit.
- 6.5' draft low VCG keel with lead ballast featuring molded GRP finish.

Engine, Steering & Systems:

- 14hp, two cylinder Yanmar 2YM15 diesel engine with 80amp alternator and Saildrive SD-20 leg.
- Keyless start/stop engine panel and tachometer with alarms and engine hour counter.
- Flexofold geared 2-bladed bronze folding prop.
- Engine throttle control with neutral safety switch.
- Waterlock muffler with exhaust run aft to transom.
- 12 gal fuel tank.
- High aspect transom mounted rudder with custom SS gudgeon hardware.
- Custom molded composite tiller in white gelcoat finish.
- Spinlock EA 1200 adjustable tiller extension with handle.
- Cockpit operated manual bilge pump operable from the helm position plumbed to transom fitting.

Electrical:

- One AGM Group 27 battery.
- 12V DC On/Off battery switch.
- 12V DC electrical distribution panel w/ 6 circuit breakers.

- LED Navigation & steaming lights.
- UL approved stranded, tinned copper ABYC color-coded wiring.
- Bonding system to meet ABYC regulations.
- Two swiveling reading lights in main cabin.
- Two red/white dome lights.
- Two DC charging plugs.
- Automatic electric bilge pump and panel switch for manual operation.

Deck Hardware:

- Low maintenance stainless grab rails on cabin house (P&S).
- Companionway opening with PVC slider tracks, large gutter drains, molded seahood and sliding cover.
- Acrylic offshore removable drop board with inside/outside lockable hasp.
- SS custom fabricated chain plates for shrouds and backstay terminations.
- Interior flush ventilation hatch mounted on cabin house forward of mast.
- Two fixed cabin side portlights.
- Two aluminum 2-speed 40:1 self-tailing primary winches in cockpit.
- Two aluminum 2-speed 30:1 self-tailing secondary winches on cabin top.
- Two 10" Lewmar OneTouch lock-in winch handles.
- Cockpit operated Harken adjustable jib car and 4:1 in-hauler systems to P&S.
- 6:1 Mainsheet system leading to ratchet block and cam mounted on centerline swivel cam base aft of traveler.
- 18:1 mainsheet fine-tune adjuster mounted to swivel base cam forward of traveler.

- Adjustable mainsheet traveler with 4:1 control line and cam cleats P & S.
- Double ended backstay adjuster purchase system leading forward to P & S cam cleats.
- Internal bowsprit launching system to exit aft face of the cabin house to cam cleat.
- Harken underdeck headsail furling system with black foils and control line leading aft on port side to cabin to cam cleat.
- Spinnaker tack line side mounted rope clutch mounted to starboard on cabin side.
- Spinnaker sheet blocks outboard of primary winches on stanchion bases and aft at stern rail.
- Halyard lead blocks mounted at mast base, halyard organizers and double Antal Vcam rope clutches one per side.
- SS stanchions, two SS stern rails at transom corners and custom SS bow rail with 9.5" lower lifeline height.
- SS double lifelines.
- Foredeck and transom mooring cleats.

Spars & Rigging:

- Hall Spars carbon fiber mast with double swept spreaders, long masthead crane and mainsail luff track. Deck step design and SS tabernacle system. Mast finished in satin black with contrasting white bands.
- Boom with internal 8:1 outhaul, mainsheet attachment points, outhaul and single reef sheaves as well as provision for reef cleat and block at inboard end. Finished in satin black with contrasting white bands.
- Carbon bow sprit with tack ferrule fitting, painted black finish. Bow sprit seal system

mounted between sprit bearings.

- Rod headstay, 1 x 19 compacted strand wire side rigging with adjustable open-body turnbuckles, and Dyneema backstay.
- Complete Hall Spars running rigging package. Hall Quickvang

Interior:

- Molded main salon liner with full length settee berths, molded backrests, storage access below, and molded areas for sink (forward to port) and hinged utility counter (forward to starboard).
- Choice of fabrics for 3" standard main salon cushions.
- Teak and holly synthetic high-wear cabin sole in main cabin.
- Igloo Cooler.
- Fabricated companionway ladder with teak treads.
- Molded V-berth and hull support liner. (Option for V-berth platform & cushions)
- Raritan PH-II marine head with holding tank and deck pump out fitting.
- Bin storage opposite head.
- Molded cockpit support liner surrounding engine and mechanicals with foam insulated engine area.
- Low maintenance painted gelcoat finish on all interior hull & deck surfaces.
- Black anodized aluminum compression post to transfer mast loads to internal hull Structure

Исключения

При продаже яхты исключаются личные вещи владельца.

Отказ от ответственности

Компания предоставляет описание судна или яхты добросовестно, но не может гарантировать точность этой информации, а также не ручается за техническое состояние. Покупатель должен проинструктировать своих агентов или оценщиков исследовать представленную информацию более подробно, по собственному желанию. Продажа судна или яхты, изменение цены или снятие с продажи будет происходить без предварительного уведомления.

ФОТОГРАФИИ

2.jpg.jpg



3.jpg



4.jpg



5.jpg



10.jpg.jpg



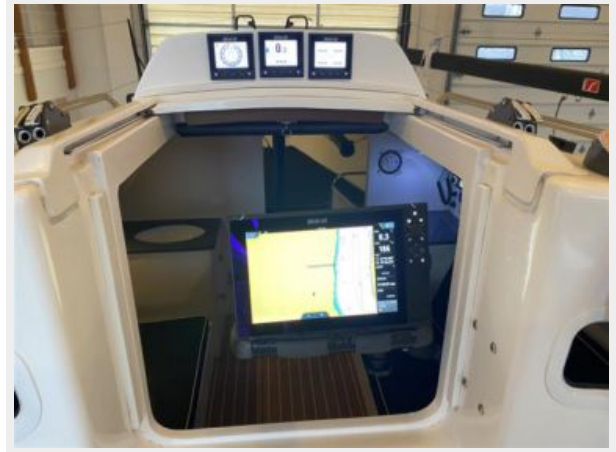
11.jpg.jpg



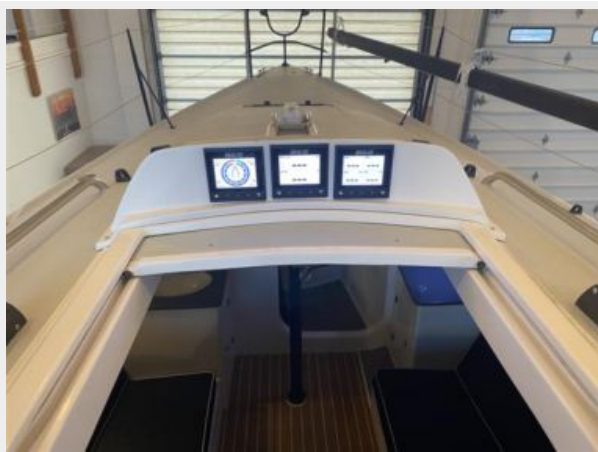
10a.jpg



11a.jpg



11a2.jpg



11b.jpg



11c.jpg



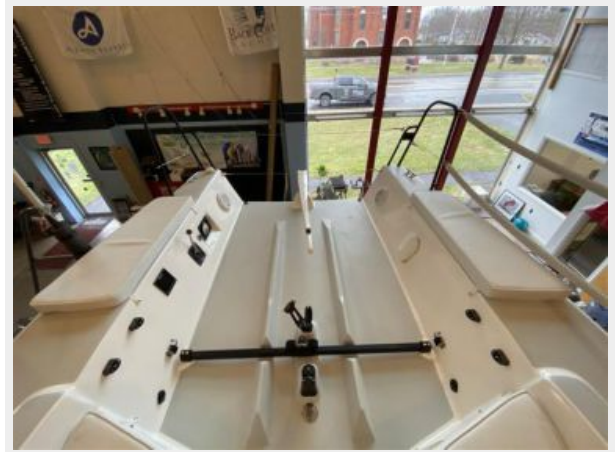
11d.jpg



12.jpg.jpg



12a.jpg



13.jpg.jpg



13a.jpg



14.jpg.jpg



14a.jpg.jpg



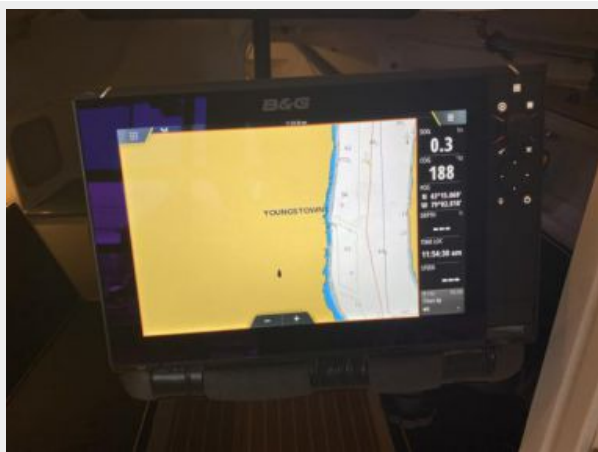
14a2.jpg



15.jpg.jpg



15a.jpg.jpg



16.jpg.jpg



16a.jpg



17.jpg.jpg



17a.jpg



18.jpg.jpg



18a.jpg



19.jpg.jpg



19a.jpg



20.jpg.jpg



20a.jpg



21.jpg



22.jpg



23.jpg



24.jpg



25.jpg



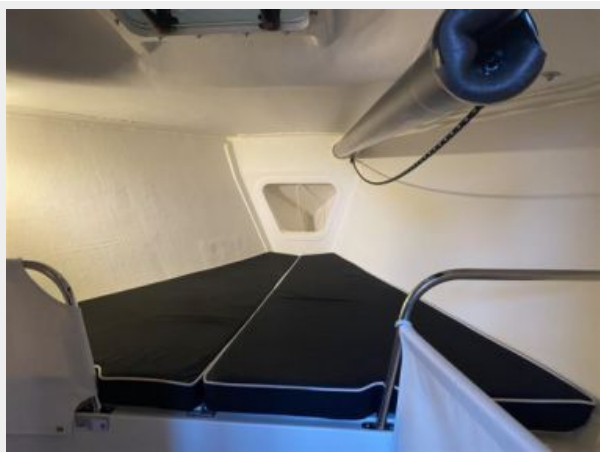
26.jpg



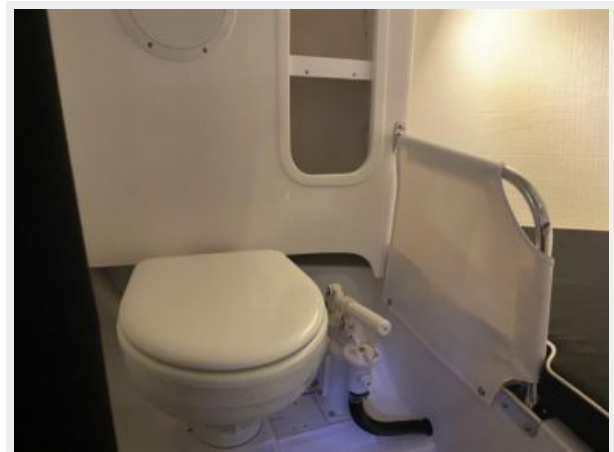
27.jpg



28.jpg



29.jpg



30.jpg



31.jpg



32.jpg



33.jpg



34.jpg



35.jpg



36.jpg



37.jpg



38.jpg



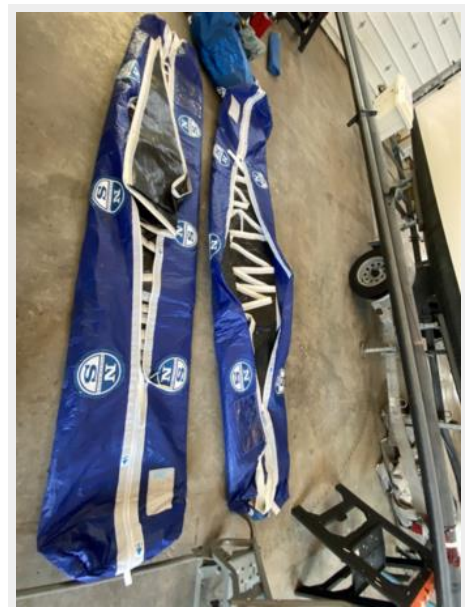
39.jpg



40.jpg



41.jpg



42.jpg



43.jpg



44.jpg



45.jpg



46.jpg



47.jpg



48.jpg



КОНТАКТЫ

Андрей Шестаков (Andrey Shestakov) – ведущий яхтенный брокер отдела продаж яхт и судов компании Shestakov Yacht Sales Inc. Официальный представитель Shestakov Yacht Sales Inc. для русскоговорящих клиентов в центральном офисе компании в Майами/Форт Лодердейл/Флорида/США.

Контактная информация

Email: andrey@shestakovyachtsales.com

Web: shestakovyachtsales.com

Телефоны

Краснодарский край: **+7(918)465-66-44**

США, Майами, Флорида: **+1(954)274-4435**

Время работы

Понедельник – Суббота: **9:00 - 21:00**
EDT

Воскресенье: **Закрето**

Адрес



Harbour Towne Marina, 850 NE 3rd St,
STE 213, Dania, FL 33004