

PEPA — PROUT



Builder: PROUT

Year Built: 2001

Model: Catamaran

Price: PRICE ON APPLICATION

Location: United States

LOA: 38' 0" (11.58m)

Beam: 17' 5" (5.31m)

Max Draft: 5' 1" (1.55m)

Our experienced yacht broker, Andrey Shestakov, will help you choose and buy a yacht that best suits your needs **PEPA — PROUT** from our catalogue. Presently, at Shestakov Yacht Sales Inc., we have a wide variety of yachts available on our sale's list. We also work in close contact with all the big yacht manufacturers from all over the world.

If you would like to buy a yacht **PEPA — PROUT** or would like help answering any questions concerning purchasing, selling or chartering a yacht, please call **+1(954)274-4435**

TABLE OF CONTENTS

TABLE OF CONTENTS	2
SPECIFICATIONS	4
Overview	4
Basic Information	4
Dimensions	4
Speed, Capacities and Weight	4
Accommodations	5
Hull and Deck Information	5
Engine Information	5
PHOTOS	6
7354464_0_090320201041_1	6
7354464_0_090320201041_2	6
7354464_0_090320201041_13	6
7354464_0_300120201130_3	6
7354464_0_300120201130_0	6
7354464_0_090320201041_14	6
7354464_0_090320201041_3	7
7354464_0_090320201041_4	7
7354464_0_300120201130_4	7
7354464_0_300120201130_11	7
7354464_0_300120201130_12	7
7354464_0_300120201130_15	7
7354464_0_300120201130_18	8
7354464_0_300120201130_16	8
7354464_0_300120201130_20	8
7354464_0_300120201130_23	8
7354464_0_300120201130_24	8
7354464_0_300120201130_27	8

7354464_0_300120201130_31	9
7354464_0_300120201130_33	9
7354464_0_300120201130_34	9
7354464_0_300120201130_35	9
7354464_0_300120201130_36	9
7354464_0_300120201130_37	9
7354464_0_300120201130_38	10
7354464_0_300120201130_39	10
7354464_0_300120201130_40	10
7354464_0_300120201130_41	10
7354464_0_300120201130_43	10
7354464_0_300120201130_45	10
CONTACTS	11
Contact details	11
Telephones	11
Office hours	11
Address	11

SPECIFICATIONS

Overview

Hard to Find - 2001 Prout 380 Cruising Catamaran Seller has single-handed, owned/cruised PEPA since 2011 and is ready to SELL! If your Dream is to cruise with an affordable cruising catamaran PEPA is the boat for you Notable Features -

- 2 - 60Hp Volvo Penta 22P Diesels - No Wind - No Problem
- Need to conserve fuel - alternate running on a single diesel, 7 Knots @ 2300 Rpm, Burns Approximately 3/4 Gal. Serviced annually using synthetic oil.
- Hard Top
- In-Mast Main Furler
- 2 - Electric Winches
- Folding Props - Gori
- Solar Panels - 10 Total, 125 Watts Each!
- Dinghy Davits
- Dinghy - 2020 Zodiac Cadet 300, 9'11" Aluminum RIB
- Outboard - 2013 Suzuki 15Hp

Basic Information

Category: Catamaran

Model Year: 2001

Year Built: 2001

Country: United States

Dimensions

LOA: 38' 0" (11.58m)

LWL: 34' 6" (10.52m)

Beam: 17' 5" (5.31m)

Max Draft: 5' 1" (1.55m)

Speed, Capacities and Weight

Displacement: 14330 Pounds

Water Capacity: 100 Gallons

Holding Tank: 36 Gallons

Fuel Capacity: 110 Gallons

Accommodations

Total Cabins: 2

Hull and Deck Information

Hull Material: Fiberglass

Engine Information

Engines: 1

Manufacturer: Volvo Penta

Model: MD22P

PHOTOS

7354464_0_090320201041_2



7354464_0_090320201041_1



7354464_0_090320201041_13



7354464_0_300120201130_3



7354464_0_090320201041_14



7354464_0_300120201130_0



7354464_0_090320201041_4



7354464_0_090320201041_3



7354464_0_300120201130_4



7354464_0_300120201130_11



7354464_0_300120201130_12



7354464_0_300120201130_15



7354464_0_300120201130_16



7354464_0_300120201130_18



7354464_0_300120201130_20



7354464_0_300120201130_23



7354464_0_300120201130_24



7354464_0_300120201130_27



7354464_0_300120201130_31



7354464_0_300120201130_33



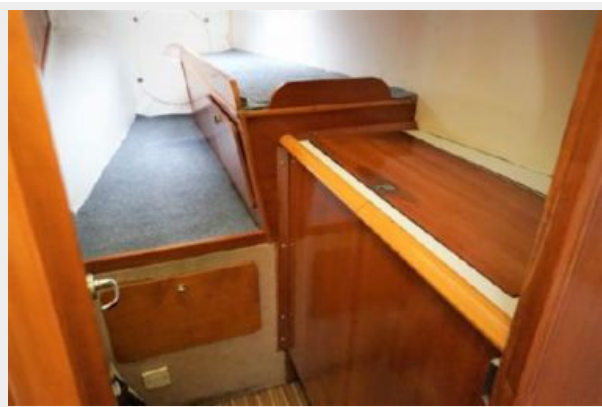
7354464_0_300120201130_34



7354464_0_300120201130_35



7354464_0_300120201130_36



7354464_0_300120201130_37



7354464_0_300120201130_38



7354464_0_300120201130_39



7354464_0_300120201130_40



7354464_0_300120201130_41



7354464_0_300120201130_43



7354464_0_300120201130_45



CONTACTS

Andrey Shestakov, leading yacht broker of the sales department of Shestakov Yacht Sales Inc. Shestakov Yacht Sales Inc., the official representative of the Miami/Fort Lauderdale FL headquarters.

Contact details

Email: andrey@shestakovyachtsales.com

Web: shestakovyachtsales.com/en/

Telephones

USA: +1(954)274-4435

Office hours

Monday – Saturday: **9:00 - 21:00** EDT

Sunday: **closed**

Address



Harbour Towne Marina, 850 NE 3rd St,
STE 213, Dania, FL 33004