

## KYRATHENA — FORMOSA



**Builder:** FORMOSA

**Year Built:** 1980

**Model:** Cruising Ketch

**Price:** PRICE ON APPLICATION

**Location:** United States

**LOA:** 51' 0" (15.54m)

**Beam:** 14' 1" (4.29m)

**Max Draft:** 6' 3" (1.91m)

Our experienced yacht broker, Andrey Shestakov, will help you choose and buy a yacht that best suits your needs **KYRATHENA — FORMOSA** from our catalogue. Presently, at Shestakov Yacht Sales Inc., we have a wide variety of yachts available on our sale's list. We also work in close contact with all the big yacht manufacturers from all over the world.

If you would like to buy a yacht **KYRATHENA — FORMOSA** or would like help answering any questions concerning purchasing, selling or chartering a yacht, please call **+1(954)274-4435**

---

# TABLE OF CONTENTS

---

TABLE OF CONTENTS	2
SPECIFICATIONS	3
Overview	3
Basic Information	4
Dimensions	4
Speed, Capacities and Weight	4
Accommodations	4
Hull and Deck Information	4
Engine Information	4
PHOTOS	5
CONTACTS	17
Contact details	17
Telephones	17
Office hours	17
Address	17

---

# SPECIFICATIONS

---

## Overview

---

### Salespersons Comments:

KYRATHENA (pronounced 'KYRA' K eye ruh which is Greek for Lady) is a cutter rigged ketch that is equally well suited for use as a live aboard, a Bluewater cruiser, a charter vessel or a tourist attraction. Sistership to the infamous Formosa 51 used for the filming of the movie Captain Ron. She features all the amenities of home and a spacious deck area for watching sunsets and hosting parties. Currently berthed in Port Clinton, OH, she has been in storage for 9 years, inside for the winters, outside under shrink wrap for the summers. With some TLC, she can be returned to the same beautiful condition that she was in during her glory years. Original wooded mast replaced with aluminum masts, newer standing rigging and running rigging that has only been in fresh water since being replaced. Original ships wheels and many other items are in storage for safekeeping and will go with the boat. KYRATHENA will provide you many years of pleasure, no matter where you decide to sail her. Classic yacht that is a project worth taking on.

Hull Type: Long Keel

Rigging Type: Staysail Ketch

LOA: 51.00 ft / 15.54 m

LWL: 39.58 ft / 12.06 m 7

Beam: 14.08 ft / 4.29 m 1

S.A. (reported): 959.00 ft<sup>2</sup> / 89.09 m<sup>2</sup>

Draft (max): 6.23 ft / 1.90 m 3

Displacement: 56,000 lb / 25,401 kg

Ballast: 12,000 lb / 5,443 kg

S.A./Disp.: 10.53 6

Bal./Disp.: 21.43 5

Disp./Len.: 403.19

Construction: FG

Built: 1972-1984

Builder: Formosa Yachts

Designer: William Garden

---

## Basic Information

---

**Category:** Cruising Ketch

**Model Year:** 1980

**Year Built:** 1980

**Country:** United States

---

## Dimensions

---

**LOA:** 51' 0" (15.54m)

**LWL:** 39' 7" (12.06m)

**Beam:** 14' 1" (4.29m)

**Max Draft:** 6' 3" (1.91m)

---

## Speed, Capacities and Weight

---

**Displacement:** 56000 Pounds

---

## Accommodations

---

**Total Cabins:** 3

**Total Heads:** 2

---

## Hull and Deck Information

---

**Hull Material:** Fiberglass

---

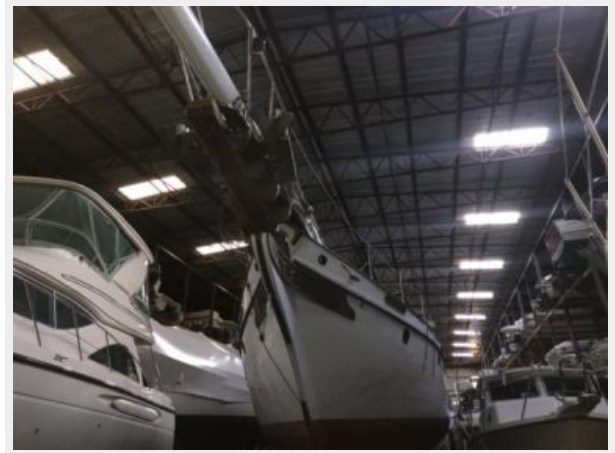
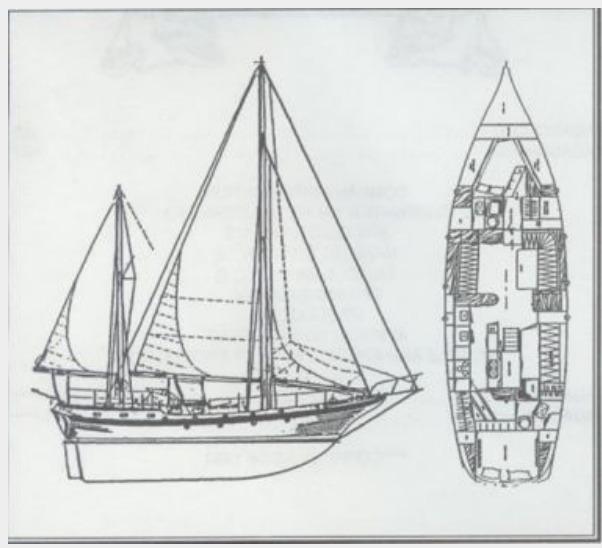
## Engine Information

---

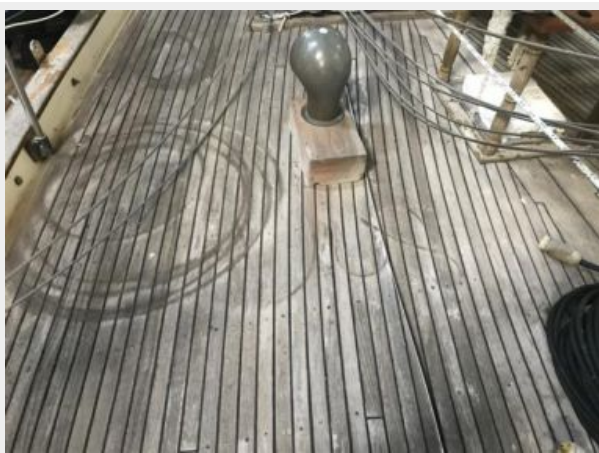
**Engines:** 1

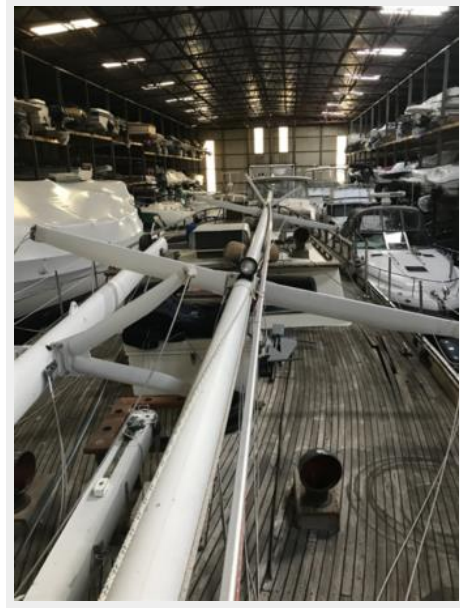
**Manufacturer:** Unknown

# PHOTOS





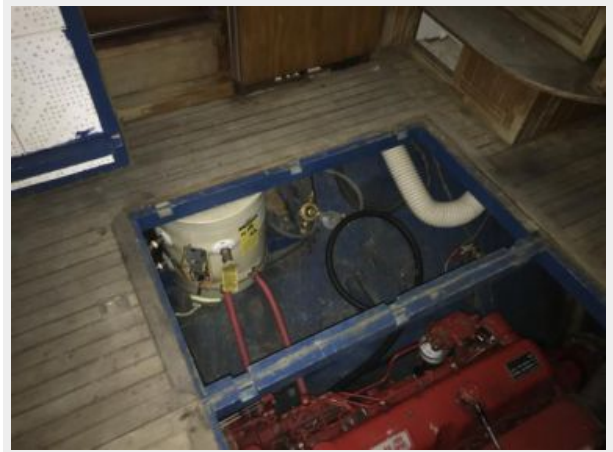






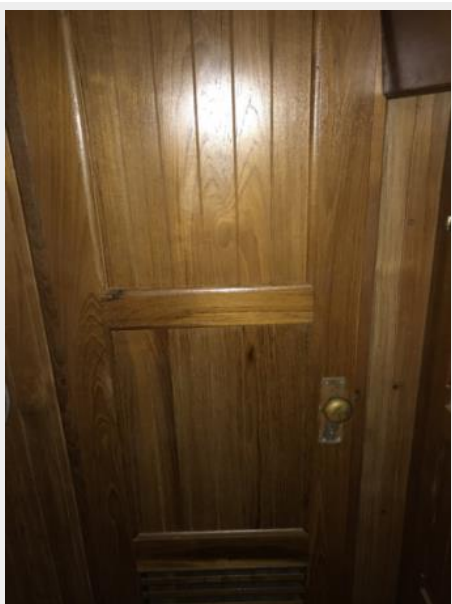




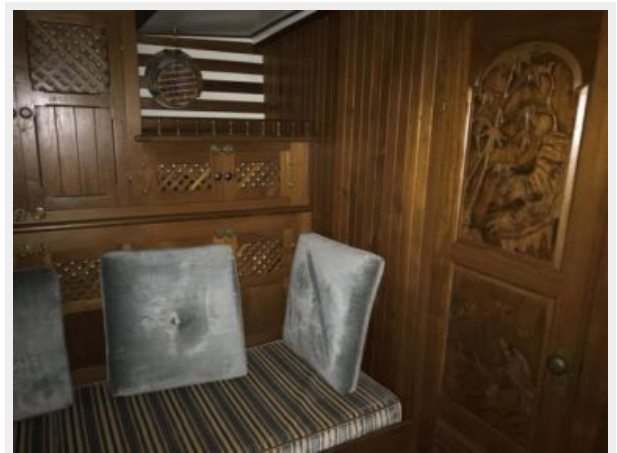
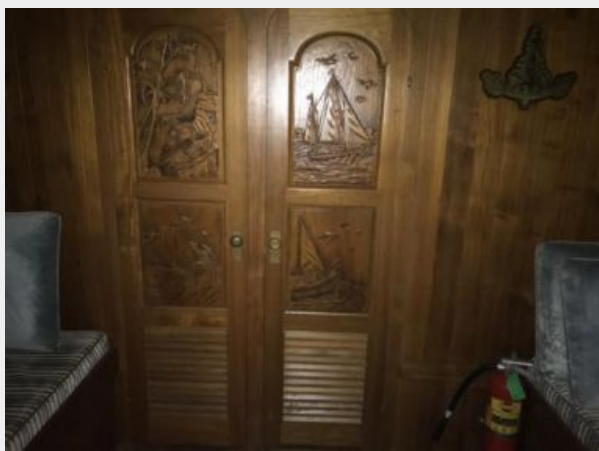




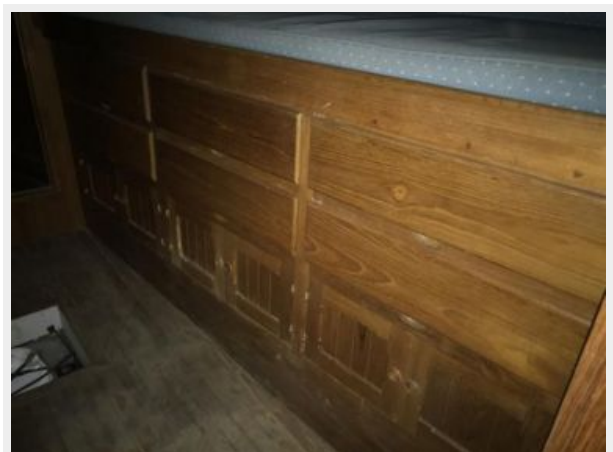
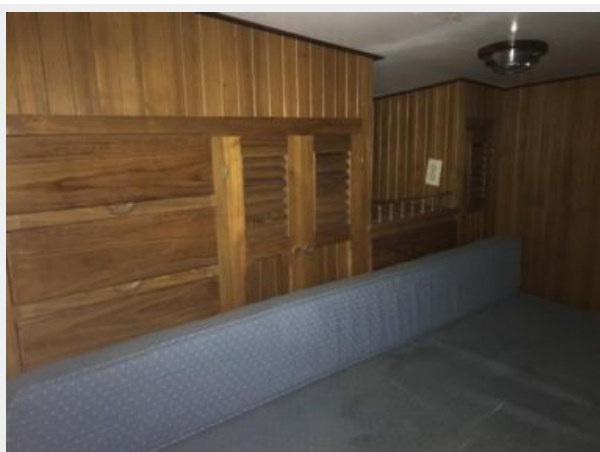
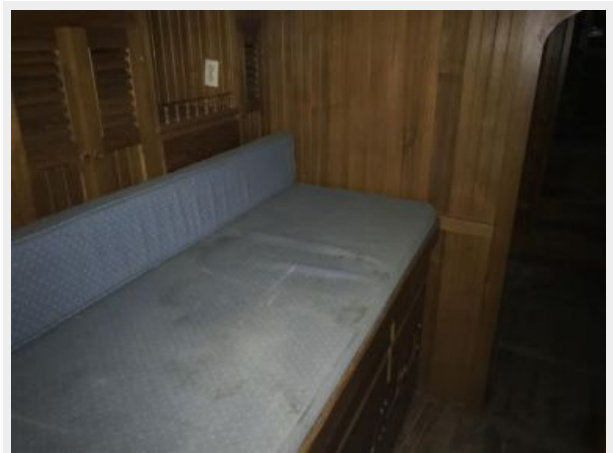




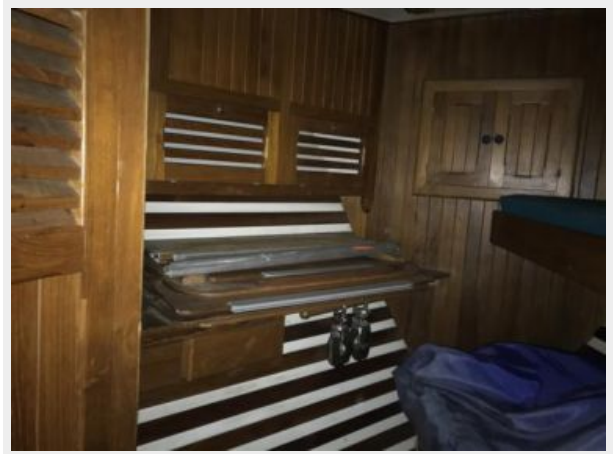
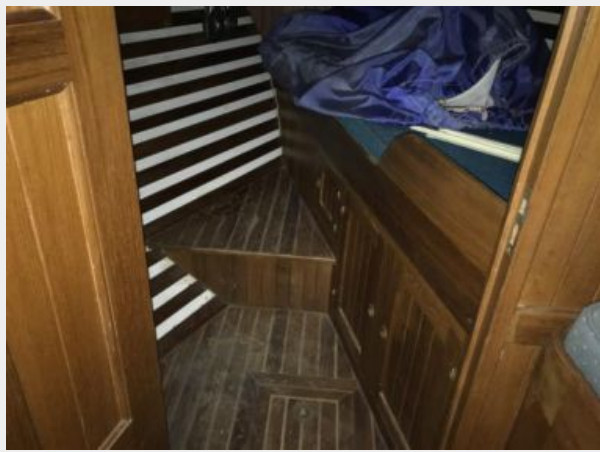














# CONTACTS

---

Andrey Shestakov, leading yacht broker of the sales department of Shestakov Yacht Sales Inc. Shestakov Yacht Sales Inc., the official representative of the Miami/Fort Lauderdale FL headquarters.

## Contact details

---

Email: [andrey@shestakovyachtsales.com](mailto:andrey@shestakovyachtsales.com)

Web: [shestakovyachtsales.com/en/](http://shestakovyachtsales.com/en/)

## Telephones

---

USA: +1(954)274-4435

## Office hours

---

Monday – Saturday: **9:00 - 21:00** EDT

Sunday: **closed**

## Address

---



Harbour Towne Marina, 850 NE 3rd St,  
STE 213, Dania, FL 33004