

## THUNDER — OCEANFAST



**Судостроитель:** OCEANFAST

**Год постройки:** 1998

**Модель:** Моторная яхта

**Цена:** **ЦЕНА ЯХТЫ ПО ЗАПРОСУ**

**Местонахождение:** United States

**Длина общая:** 164' 0" (49.99m)

**Ширина:** 26' 7" (8.10m)

**Мин. осадка:** 4' 9" (1.45m)

**Макс. осадка:** 5' 3" (1.60m)

**Крейс. скорость:** 17 Kts. (20 MPH)

**Макс. скорость:** 25 Kts. (29 MPH)

Купить **Thunder — OCEANFAST** а также выбрать подходящую вам яхту из нашего каталога яхт вам поможет опытный яхтенный брокер Андрей Шестаков. На сегодняшний день компания **Shestakov Yacht Sales Inc.** имеет большое количество яхт в собственном списке продаж, а также тесно сотрудничает со всеми крупными яхтенными производителями по всему миру.

Для того чтобы купить яхту **Thunder — OCEANFAST** а также проконсультироваться по любому вопросу связанному с покупкой, продажей, чартером яхт позвоните по телефону **+7(918)465-66-44**.

# ОГЛАВЛЕНИЕ

ОГЛАВЛЕНИЕ	2
ХАРАКТЕРИСТИКИ	3
Обзор	3
Основная информация	3
Размеры	3
Скорость, вместимость и масса	4
Размещение	4
Корпус и палуба	4
Информация о двигателе	4
ПОДРОБНОЕ ОПИСАНИЕ	5
Main Deck Accommodations	5
Lower Accommodations	6
Deck Spaces and Fly Bridge Sun Decks	7
Helm, Bridge, Communications	8
Galley and Laundries	9
Mechanical	10
Engine and Electrical	11
Crew Accommodations	11
Disclaimer	11
Исключения	11
Отказ от ответственности	11
ФОТОГРАФИИ	13
КОНТАКТЫ	22
Контактная информация	22
Телефоны	22
Время работы	22
Адрес	22

# ХАРАКТЕРИСТИКИ

## Обзор

On Display at the Palm Beach Boat Show A very rare opportunity to own one of the most unique mega yachts built. Pioneering style and propulsion, THUNDER, was built as a leader in the yachting world. Her styling is like no other and she wears her provenance proudly. First commissioned as THUNDER B, her designs by the late Jon Bannenberg, with naval architecture by Mark Ellis Marine Designs make this mega yacht stand out from any other. Big, Sleek, and fast with a shallow draft puts this yacht in a class of stand out from any other. Big, sleek, and fast with a shallow draft puts this yacht in a class of her own. A complete and extensive refit in 2015/16 saw her redone with 'cost as no issue'. Thunder's refit includes an entirely new interior; everything has been changed including all new walls, ceilings, floors, and furniture. The complete new interior is outfitted in Cavalli Visionaire furniture and furnishings throughout, by Cavalli. Her plush interior that has been completely redone at Lusben Shipyard in Viareggio, Italy. The refit went beyond the interiors with updated electronics and the W6 completed on her MTU's. When launched in 1998, Thunder B set new bounds in the mega yacht category. Thirty four knot speed and a draft of only 5'3". She provides the ability to get into places almost no other yacht of her size can go, and can get there faster than most, as well. Beautiful entertaining spaces abound with a mid-ship Master Suite that is befitting a 50 meter yacht. Four more staterooms on the lower deck and an additional convertible den on the main deck, all with ensuite bathrooms provides private accommodations for 12. A 7 meter pool sits on the fore-deck. Spectacularly clean and fresh, Thunder provides the most amount of yachting for her very aggressive pricing. Call today for more information. Extensive Refit has been done- contact broker for more information

## Основная информация

**Тип судна:** Моторная яхта

**Модельный год:** 1998

**Год постройки:** 1998

**Год обновления:** 2021

**Страна:** United States

## Размеры

**Длина общая:** 164' 0" (49.99m)

**Ширина:** 26' 7" (8.10m)

**Мин. осадка:** 4' 9" (1.45m)

**Макс. осадка:** 5' 3" (1.60m)

## Скорость, вместимость и масса

---

**Крейс. скорость:** 17 Kts. (20 MPH)

**Дальность на крейсерской скорости:**  
3000

**Макс. скорость:** 25 Kts. (29 MPH)

**Чистый вес:** 445 Pounds

**Вместимость воды:** 1320.99762946704  
Gallons

**Объем топливного бака:**  
18683.9989781448 Gallons

## Размещение

---

**Всего кают:** 6

**Всего коек:** 6

**Всего ком. состава:** 7

## Корпус и палуба

---

**Материал корпуса:** Carbon Fiber

**Дизайнер экстерьера:** Jon Bannenberg

**Дизайнер интерьера:** Jon Bannenberg

## Информация о двигателе

---

**Двигатели:** 3

**Производитель:** MTU

**Модель:** 396 Series V16 TE 94

**Тип двигателя:** Inboard

**Тип топлива:** Diesel

# ПОДРОБНОЕ ОПИСАНИЕ

## Main Deck Accommodations

### Indoor/Outdoor Salon Dining

*Thunder* shows her most dramatic look from behind. Sweeping lines with sweeping dual staircases from the large swim deck bring you up to her indoor/outdoor dining salon. With glass doors for over 180 degrees of visibility, you keep the panorama view while staying in air-conditioned comfort. Open the sliding glass doors and the area is converted into an outdoor, Al Fresco dining space. The doors open partially or completely transforming the aft deck into the protected or open area as you desire.

The Visionaire table with seating for ten is an elegant space for Al Fresco dining, with floor-to-ceiling glass doors to allow weather protection while maintaining the beautiful views.

The Smart TV is connected to the entertainment systems on board.

### Salon

Moving forward from the outdoor dining salon is the entry foyer leading to the main salon. A large hallway with glass doors provides privacy in the room. The main salon is a very intimate, private area with tall windows and high ceilings (over 11'). *Thunder's* main salon is a formal living room giving the owner a more elegant space to welcome and entertain guests. Luxuriously appointed with Visionaire furniture and furnishings that create a distinctive yet comfortable space for the most formal occasion.

The chandeliers and artwork on board are all included with the yacht.

Moving forward from the main salon, through electronic glass sliding doors, you enter the forward lobby with powder room to port, staircases leading to the lower accommodations, and wheelhouse stairway and forward guest suite to starboard.

### Main Deck Guest Suite

All the way forward is a guest suite. This private, intimate space with wrap-around windows gives this cabin incredible views. EnSuite bath and shower located to port.

- 1- 32 inch SMART LG TV ( retractable from the ceiling)
- 1 x Direct TV
- 1- Remote control for illumination
- 1- Remote control for retraction of TV

---

## Lower Accommodations

---

There are 5 staterooms on this level.

### Master Suite

*Thunder's* Master Suite is full beam and located to the aft section of this deck. As you enter this incredibly large space, there is a comfortable lounge area, king-size bed, Furnishings are all exquisite Visionaire designs and are very fitting for the yacht. The lighting is remote-controlled. Extra-large double wardrobes covered in full-length mirrors add to the volume in the suite.

There are two master bathrooms; the main is outfitted with a full-size tub, shower, and water closet complete with bidet. The second is complete with a steam shower.

The 50" Smart TV is connected to the satellite systems onboard providing access to SAT TV and internet. WiFi is available throughout the yacht.

*Thunder's* master suite gives you the retreat and privacy you need while aboard.

### Master Stateroom Entertainment

- 1 x 50 inch SMART LG TV (Auto retraction)
- 1 x Direct TV
  
- 2 x Air cleaning and Ozonating system BORK
- 1 x Air cleaning system BORK
  
- 1 x Remote control for illumination
- 1 x Remote control for retraction of TV

### VIP Stateroom

Elegantly appointed, the VIP suite is located amidships to port. The VIP suite is a place for your guests to enjoy their privacy in an area that is inviting and warm. Bed and all furnishings are Visionaire. There is also a desk, wardrobe, recently replaced carpets, curtains, and soft furnishings. The 32" Smart TV is connected to the ships satellite and internet systems as well as WiFi throughout. The VIP suite is also outfitted with remote control lighting.

The en suite bathroom is also equipped with a programmable spa shower.

This room will not disappoint the most discerning guest.

- 1 x 32" SMART LG TV (retractable from ceiling)
- 1 x Direct TV
  
- 1 x remote control for illumination
- 1 x remote control for retraction of TV

## Guest Stateroom/Den

Adjacent to the VIP suite is a stateroom laid out with a variety of possibilities for accommodations, a standard berth, massage table, exercise space can easily be accommodated here quipped with en suite bathroom, this room functions for both a relaxing TV room below deck or as a fully outfitted 6th guest cabin.

- 1 x 32" SMART LG TV (retractable from ceiling)
- 1 x Direct TV
- 1 x Remote control for illumination
- 1 x Remote control for retraction of TV

## Forward Guest Staterooms

*Thunder* provides two near-identical guest cabins. These two staterooms mirror each other; one to port, the other to starboard forward in the guest area. Special attention was paid during the refit to use these spaces in a fashionable way. The double berths are outboard with a unique seating area forward leading into the en suite head.

The use of the woods conforming to the shape of the yacht gives these two rooms a warmth and openness. These spaces add to *Thunder's* uniqueness and give your guests an experience that is nautical, but nothing close to the cookie cutter staterooms seen often in yachts today.

Again, elegant Visionaire styling is used in the furnishings of these rooms.

- 1 x 32" SMART LG TV (retractable from ceiling)
- 1 x Direct TV
- 1 x Remote control for illumination
- 1 x Remote control for retraction of TV

## Deck Spaces and Fly Bridge Sun Decks

*Thunder* has many exterior spaces to enjoy. From her lower aft swim deck, her special fore-deck seven meter pool with stunning spaces, to her flybridge. This yacht was designed for the yachtsman who places a priority on outdoor living, lounging, and enjoyment.

*Thunder* has a very inviting swim platform ready to receive guests at the water's edge. Low to the water, this is the point to enter from a tender or while swimming. The passerelle extends aft to welcome visitors and doubles as the crane to lift the aft tender.

Ascending sweeping stairs to the main deck, you are now at the indoor/outdoor dining salon. Wrap around wide gangways leading forward to the fore-deck. Here, you reach a stunning area with its amazing 7 meter pool. Sunpads and umbrellas surround the pool and it can be smartly shaded with retractable umbrellas. This area is one of the most popular exterior spaces aboard, giving you a private area for swimming or sunbathing in port or at anchor. The pool doubles as a tender garage while underway. The pool also has a separate area for a jacuzzi as well as an "endless pool" feature that allows you to do laps in place.

*Thunder's* dramatic profile continues with sweeping dual stainless steel stairways from the aft deck. As you reach the upper deck, you are greeted with a glorious vista from atop *Thunder*. There are side-by-side settees each with a dining table and large retractable umbrellas is available to cover the area.

Forward on the flybridge is the upper deck. Again, giving a lofty view around the yacht and harbor. This is the most thrilling spot to experience the yacht while underway. Sunning pads are located at the foremost part of this deck.

---

## Helm, Bridge, Communications

---

### Navigation Equipment

- Gyro compass: 1 x C. Plath Fibro-Optical gyro
- Automatic pilot: 1 x C. Plath Navy Pilot V
- MDI 1 x MDI system with automated TRIMS and fins control KAMEWA control
- Echo sounder: 1 x Simrad IS 15
- Radar: 2 x Furuno MU 190,
- DPGS: 1 x Leica MX400 and 1 x Furuno SC 502
- Navtex: 1 x Furuno NX 700
- Wind instruments: 1 x Furuno anemometer
- ECDIS display unit
- ECDIS: 1 x Transas Navisailor with wind input

### Communication Equipment

- Satcom: 1 x Inmarsat C Furuno Felcom 18
- Satcom: 1 x Inmarsat Fleet, Thrane and Thrane (data+voice+VOIP+fax)
- EGC: 1 x Furuno Felcom 18
- VHF: 2 x Furuno FM4800 VHF+DSC
- EPIRBs: 1 x ACR Cat I, 1 x ACR Cat II
- GMDSS VHF: 2 x McMurdo E5 Handheld and 2 x McMurdo R5 TT1709 A
- SART: 2 x ACR Electronics Pathfinder 3
- AIS: 1 x Furuno FA-170 (Class A)
- Daily use VHF: 6 x ICOM units with chargers

-



## Galley and Laundries

---

*Thunder's* galley is a very serviceable arrangement. Designed for the chef on board, there are ample storage and work spaces. Recently updated appliances and kitchen machines provide the necessary tools needed for gourmet meals and efficient service. Large pantries are well positioned for stocks.

Easy access for the crew maintains guest privacy while working around the yacht. Crew also have access through the exterior gangway. Crew quarter access is also at this service entry. Your crew remain as separate as desired.

- 2 x side-by-side refrigerators and freezers LG RSA1SHVB-555 ITRs each
- (2 x 180 ITRs freezer & 2 x 360 ITRs refrigerator)
- 1 x refrigerator zanussi ZGR 11600 WA 116 ITRs
- 1 x freezer zanussi ZFT 11100 WA 110 ITRs
- 1 x ice maker isotherm 30 ITRs
- 1 x BOSCH FD 9382 steam combination oven
- 1 x Hobart steam combination
- 1 x microwave BEKO 30 ITRs (with grill)
- 1 x dishwasher electrolux
- 1 x hobart FE600
- 1 x induction cooking top BOSCH Schott Ceran 5
- 1 x extractor fan with CO2 fire shut off flap
- 1 x Fryer Bosch
- 1 x Hot plate Bosch
- 1 x Mixer Kitchen Aid deluxe
- 1 x Ice cream maker BORK E801
- 1 x Juice Maker BORK
- 1 x Sink Grinder-Incinerator
- 1 x Water filtering system CRYSTAL
- 1 x coffee machine BORK C830 (capsule)
- 1 x coffee machine DeLonghi Eletta Plus
- 1 x Multicooker Philips HR 1922
- 1 x Toaster Tefal TT356A11

### Store Room Fridge

- 1 x Refrigerator SNAIGE F100 100 ITRs
- 1 x Refrigerator SNAIGE F100 100 ITRs

### Laundries

- 1 x washing machine LG direct drive FH0C3LD

- 1 x washing machine LG direct drive F1496ADP3
- 1 x dryer miele softronic T4263C
- 1 x dryer electrolux ADC67555W
- 1 x washing machine LG direct drive F1296CDP3
- 1 x washing machine LG direct drive F1296CDP3

## Mechanical

---

### Crane

- 1 x nautical structures concealed in the fore deck 2,3 mt SWL
- 1 x nautical structures concealed in the passerole 750 kg SWL

### Security and Safety Equipment

- 1 x CO2 fixed fire fighting station, 5 bottles x 20kg each
- 34 x fire extinguishers-dry powder and CO2
- 6 x fire hydrant points with hoses and nozzles
- 1 x fire pump with 1 x bilge/fire pump
- 1 x emergency fire/bilge pump (diesel)
- 2 x fire suit with breathing apparatus & 2 spare bottles
- 1 x Pack EEBD in engine room
- 2 x fire blankets
- 1 x autotrónica central fire alarm panel
- 2 x RFD 25 man rafts (painted color of yacht)
- 28 x auto inflate life jackets
- 4 x life rings (with covers in color of yacht)
- 4 x pains wessex line throwers (located sundeck aft)
- 1 x offshore pack flares

### Anchoring and Mooring Systems

- 2 x stainless steel 138kg certified anchors
- 1 x chains, certified of 275m @ 19mm (stainless steel, changed in 2016)
- 4 x 50m 32mm new braided mooring lines with padded loop
- capstans muir 2 aft
- general assortment of lines
- winches and chains are concealed in the fore deck of the superstructure
- anchors winches muir radio control with 2 gypsies
- crane, passarella, winches, anchors all remotely controlled by 2 available remote controls

### Boarding

- 1 x marquipt boarding ladder: fittings on port & starboard with 2 x handrails
- 2 x set of tender whips

---

## Engine and Electrical

---

Thunder's engineering spaces and engine room are well designed with the engineer in mind. Accesses all around and well kept engineering documentation.

- engines: 2 x MTU 396 series V16 TE 94 @ 2,950 Hp each SMOH 320 engine hours
- propulsion: KAMEWA jets
- generators & electricity: 2 x KOHLER 80EFOZD (50 Hz) 80 kWt, engine JOHN DEERE-6068TFM76, Generator hours: 1 x Port DG-2225 hours, 1 x Stbd DG - 2234 hours.
- Electricity: Atlas 380v 3ph conditioner unit (new 2020)
- Batteries: maintenance free lead batteries
- chargers: master volt 25/50/100 -any units
- stabilizers: maritime dynamics inc
- bowthruster: HPS 20 HT (90hp)
- Air conditioning: 1 x condaria 105kw water chiller
- water maker: 1 x HEM 30/4000 340 lph
- Fuel centrifuge/separator: racor filters
- Passerelle: 1 x Aquacrane hydraulic gangway
- Teak Deck, 2 x sets of handrails

---

## Crew Accommodations

---

Generous crew accommodations for 8 with separate crew mess area.

- 1 x 32in SMART LG TV (retractable from the ceiling)
- 1 x Hot Bird Sat TV

---

## Disclaimer

---

The Company offers the details of this vessel in good faith but cannot guarantee or warrant the accuracy of this information nor warrant the condition of the vessel. A buyer should instruct his agents, or his surveyors, to investigate such details as the buyer desires validated. Hours listed may vary from actual hours due to recent use. Purchaser is encouraged to verify hours prior to purchase. This vessel is offered subject to prior sale, price change, or withdrawal without notice.

---

## Исключения

---

При продаже яхты исключаются личные вещи владельца.

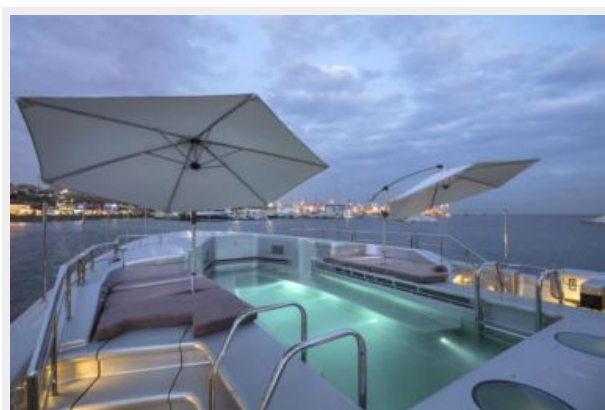
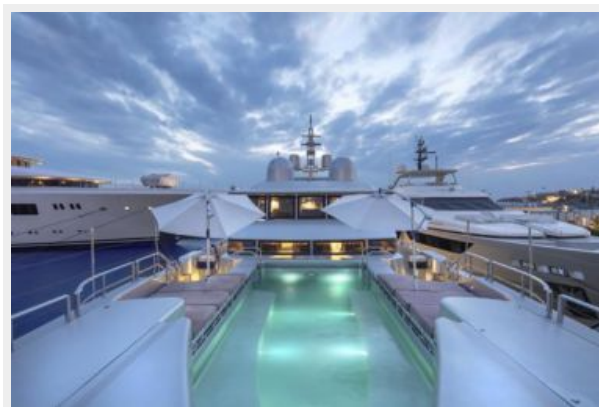
---

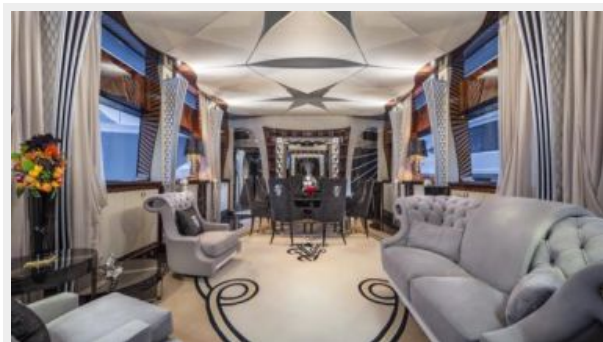
## Отказ от ответственности

---

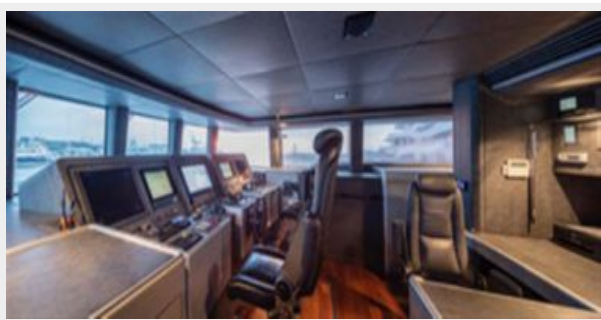
Компания предоставляет описание судна или яхты добросовестно, но не может гарантировать точность этой информации, а также не ручается за техническое состояние. Покупатель должен проинструктировать своих агентов или оценщиков исследовать представленную информацию более подробно, по собственному желанию. Продажа судна или яхты, изменение цены или снятие с продажи будет происходить без предварительного уведомления.

# ФОТОГРАФИИ





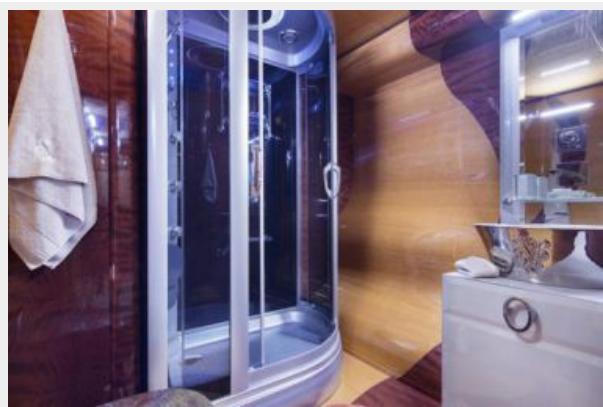




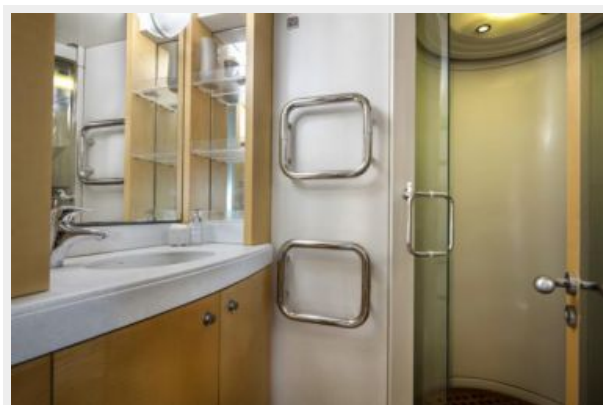
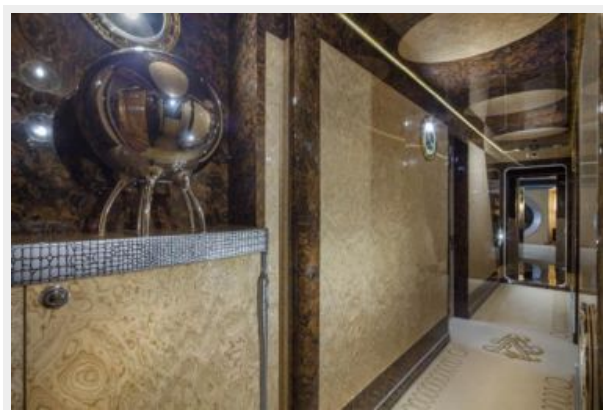


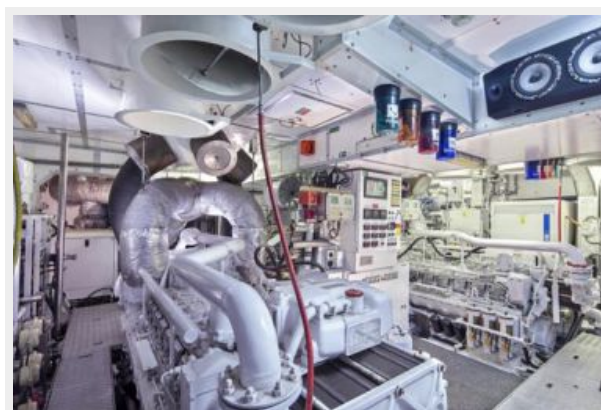
















# КОНТАКТЫ

---

Андрей Шестаков (Andrey Shestakov) – ведущий яхтенный брокер отдела продаж яхт и судов компании Shestakov Yacht Sales Inc. Официальный представитель Shestakov Yacht Sales Inc. для русскоговорящих клиентов в центральном офисе компании в Майами/Форт Лодердейл/Флорида/США.

## Контактная информация

---

Email: [andrey@shestakovyachtsales.com](mailto:andrey@shestakovyachtsales.com)

Web: [shestakovyachtsales.com](http://shestakovyachtsales.com)

## Телефоны

---

Краснодарский край: **+7(918)465-66-44**

США, Майами, Флорида: **+1(954)274-4435**

## Время работы

---

Понедельник – Суббота: **9:00 - 21:00**  
EDT

Воскресенье: **Закрито**

## Адрес

---



Harbour Towne Marina, 850 NE 3rd St,  
STE 213, Dania, FL 33004