

## STILL DREAMING — AZIMUT



**Судостроитель:** [AZIMUT](#)

**Год постройки:** 2019

**Модель:** Моторная яхта

**Цена:** ЦЕНА ЯХТЫ ПО ЗАПРОСУ

**Местонахождение:** United States

**Длина общая:** 59' 10" (18.24m)

**Ширина:** 16' 7" (5.05m)

**Макс. осадка:** 4' 9" (1.45m)

Купить **Still Dreaming** — **AZIMUT** а также выбрать подходящую вам яхту из нашего каталога яхт вам поможет опытный яхтенный брокер Андрей Шестаков. На сегодняшний день компания **Shestakov Yacht Sales Inc.** имеет большое количество яхт в собственном списке продаж, а также тесно сотрудничает со всеми крупными яхтенными производителями по всему миру.

Для того чтобы купить яхту **Still Dreaming** — **AZIMUT** а также проконсультироваться по любому вопросу связанному с покупкой, продажей, чартером яхт позвоните по телефону **+7(918)465-66-44**.

# ОГЛАВЛЕНИЕ

ОГЛАВЛЕНИЕ	2
ХАРАКТЕРИСТИКИ	7
Обзор	7
Основная информация	7
Размеры	7
Скорость, вместимость и масса	8
Размещение	8
Корпус и палуба	8
Информация о двигателе	8
ПОДРОБНОЕ ОПИСАНИЕ	9
Still Dreaming	9
Flybridge	9
Foredeck	10
Aft Deck	10
Engine Room	10
Swim Platform	10
Salon	10
Galley	11
Lower Helm	11
Master Stateroom	11
Twin Cabin	12
VIP Stateroom	12
Исключения	12
Отказ от ответственности	12
ФОТОГРАФИИ	13
2	13
3	13
4	13

5	13
6	13
7	13
8	14
9	14
10	14
11	14
12	14
13	14
14	14
15	14
16	15
17	15
18	15
19	15
20	15
21	15
22	15
23	15
24	16
25	16
26	16
27	16
28	16
29	16
30	16
31	16
32	17
33	17

---

34	17
35	17
36	17
37	17
38	17
39	17
40	18
41	18
42	18
43	18
44	18
45	18
46	18
47	18
48	19
49	19
50	19
51	19
52	19
53	19
54	19
55	19
56	20
57	20
58	20
59	20
60	20
61	20
62	20

---

63	20
64	21
65	21
66	21
67	21
68	21
69	21
70	21
71	21
72	22
73	22
74	22
75	22
76	22
77	22
78	22
79	22
80	23
81	23
82	23
83	23
84	23
85	23
86	23
87	23
88	24
89	24
90	24
91	24

---

92	24
93	24
94	24
95	24
96	25
97	25
99	25
98	25
100	25
101	25
102	26
103	26
104	26
105	26
106	26
107	26
<b>КОНТАКТЫ</b>	<b>27</b>
Контактная информация	27
Телефоны	27
Время работы	27
Адрес	27

# ХАРАКТЕРИСТИКИ

## Обзор

**Motor Yacht Still Dreaming** is 2019 Azimut 60 FLY, the newest generation of Azimut Yachts introduced in 2018.

Her exterior lines identify Still Dreaming immediately as an Azimut. The 2019 model has significant exterior design innovations by designer Stefano Righini who gave her sporty lines.

A feature of note is the volume that we find on her extremely spacious flybridge that now extends further aft than previous models. This is a big deal because the flybridge is where guests are likely to spend most of their time.

The dinette offers an unprecedented and unimpeded view of the sea through full high glazing over cutaway gunwales. This area furnished with a table that can be lowered to become a coffee table can be used both for dining and as a second lounge.

In her foredeck sunbathing area there is no shortage of usable exterior space.

The 2019 AZIMUT 60 FLY offers 3 comfortable cabins and 1 crew quarter.

## Основная информация

<b>Тип судна:</b> Моторная яхта	<b>Подкатегория:</b> Flybridge
<b>Модельный год:</b> 2019	<b>Год постройки:</b> 2019
<b>Страна:</b> United States	<b>Верх:</b> Hardtop
<b>Открытая палуба мостика:</b> Да	<b>Кубрик:</b> Да

## Размеры

<b>Длина общая:</b> 59' 10" (18.24m)	<b>Ширина:</b> 16' 7" (5.05m)
<b>Макс. осадка:</b> 4' 9" (1.45m)	

## Скорость, вместимость и масса

---

**Водоизмещение:** 60000 Pounds

**Вместимость воды:** 198 Gallons

**Вместимость сточного бака:** 46 Gallons

**Объем топливного бака:** 739 Gallons

## Размещение

---

**Всего кают:** 3

**Всего коек:** 4

**Спальные места:** 6

**Всего ком. состава:** 3

**Каюта капитана:** Да

**Каюты экипажа:** 1

**Спальных мест экипажа:** 1

**Комм. состав экипажа:** 1

## Корпус и палуба

---

**Материал корпуса:** Fiberglass

## Информация о двигателе

---

**Двигатели:** 2

**Производитель:** Volvo Penta

**Модель:** D13-900

**Тип двигателя:** Inboard

**Тип топлива:** Diesel



---

# ПОДРОБНОЕ ОПИСАНИЕ

---

## Still Dreaming

---

**Motor Yacht Still Dreaming** is 2019 Azimut 60 FLY, the newest generation of Azimut Yachts introduced in 2018.

Her exterior lines identify Still Dreaming immediately as an Azimut. The 2019 model has significant exterior design innovations by designer Stefano Righini who gave her sporty lines.

A feature of note is the volume that we find on her extremely spacious flybridge that now extends further aft than previous models. This is a big deal because the flybridge is where guests are likely to spend most of their time.

The dinette offers an unprecedented and unimpeded view of the sea through full high glazing over cutaway gunwales. This area furnished with a table that can be lowered to become a coffee table can be used both for dining and as a second lounge.

In her foredeck sunbathing area there is no shortage of usable exterior space.

The 2019 AZIMUT 60 FLY offers 3 comfortable cabins and 1 crew quarter.

## Flybridge

---

With a newly redesigned layout, the flybridge is extremely spacious and it extends further aft than you may expect.

This area embodies all the elements of an Italian luxury product: long, simple lines that create areas for social interaction and ultimately to celebrate life with your family and guests on board.

It is divided into 3 areas.

First, we have the helm station.

With pilot and copilot seats, she offers her owner the ultimate pleasure in piloting, while flying above the water.

Next up of the social area features a sun lounge to starboard.

This is just a few feet away from a grilling station. There's also an ice maker and a sink conveniently located in front of the dinette.

Finally, is a fully furnished seating area.

All of these seating feature foam cushions that are upholstered in a fabric that is super soft to the touch. Additionally, it's also easy to maintain... even in a marine environment.

---

## Foredeck

---

Offering a completely different experience than the flybridge, the foredeck is a private oasis that has become something Azimut is famous for.

Now, it might look like a fairly standard fore deck layout but the sun bathing area can easily convert into two comfortable sitting areas for breakfast in the morning or sipping cocktails in the evening. Shade is provided by the bimini overhead.

Forward of this is her ground tackle.

---

## Aft Deck

---

This space is going to get used as your primary al fresco dining location. This dinette features a teak table.

---

## Engine Room

---

Underfoot is the engine room access hatch. Down here is where we find a pair of VOLVO PENTA D-13 Diesel Engines each generating 900 horsepower.

The boat performed magnificently with a top speed in excess of 31 knots. Her cruise speed is 28 knots.

In terms of range, you can expect to get around 300 Nautical Miles every time you fill her up, and run her at around 23 Knots.

---

## Swim Platform

---

Just a few steps down from the aft deck is the swim hydraulic teak platform. This is your ticket to enjoying the water anytime you want.

This is also where her tender is stored when underway. The hydraulic swim platform holds a tender of 3.25 mt.

There's also some secondary storage space- sufficient enough for a sea bob, fenders or diving gear.

The lay out of this yacht provides crew accommodation with a single cabin with bathroom and shower.

---

## Salon

---

The salon, that was designed by Achille Salvagni one of Interior Digests top 100 international designers.

The design philosophy is based on the theme of timeless calm and elegance- which also puts an emphasis on a contemporary look.

For materials, here we will see primarily brushed oak embellished with brass and stainless steel accents. These details are timeless and rich.

The salon offers your guests a great view of the their surroundings.

Forward of the seating area is the dinette that offers an unprecedented and unimpeded view of the sea through full high glazing over cutaway gunwales. This area finished (furnished) with a table that can be lowered to become a coffee table can be used both for dining and as a second lounge.

---

## Galley

---

Across from the formal dining space is her striking galley. With plenty of counter top space and storage, this galley is a great place to prepare and cook your meals.

All of the appliances are made by Miele... a top brand producer with some of the most reliable appliances available on yachts today.

The galley is fully equipped with freezer, refrigerator, double sink and even a wine cooler.

---

## Lower Helm

---

Forward of the galley is the lower helm.

This state of the art helm is equipped with the latest equipment available from the Azimut innovation lab. These systems insure optimal yacht management solutions and features like active trim control which automatically adjust the trim of the yacht while underway.

Not only does this give you one less thing to think about, but it also guarantees the lowest possible fuel consumption.

Electronic power steering allows you to customize the helm sensitivity by regulating the number of wheel turns and the force required. This also increases safety because the maximum steering angle is reduced at full throttle and increased at slower speeds.

---

## Master Stateroom

---

From here, let's head below deck and take a look at the master stateroom.

Here in the midship owners suite, the styling borrows a home-y feel.

All of the furniture found in here, fits this yachts contemporary stylings perfectly.

In addition to a queen berth, there is a beautiful vanity.

Like the rest of the staterooms, the master also has a private en suite.

---

## **Twin Cabin**

---

Forward of the master to starboard is another cabin with twin berths.

---

## **VIP Stateroom**

---

Her final stateroom is the bow vip.

---

## **Исключения**

---

При продаже яхты исключаются личные вещи владельца.

---

## **Отказ от ответственности**

---

Компания предоставляет описание судна или яхты добросовестно, но не может гарантировать точность этой информации, а также не ручается за техническое состояние. Покупатель должен проинструктировать своих агентов или оценщиков исследовать представленную информацию более подробно, по собственному желанию. Продажа судна или яхты, изменение цены или снятие с продажи будет происходить без предварительного уведомления.

# ФОТОГРАФИИ

2



3



4



5



6



7



8



9



10



11



12



13



14



15





16



17



18



19



20



21



22



23



24



25



26



27



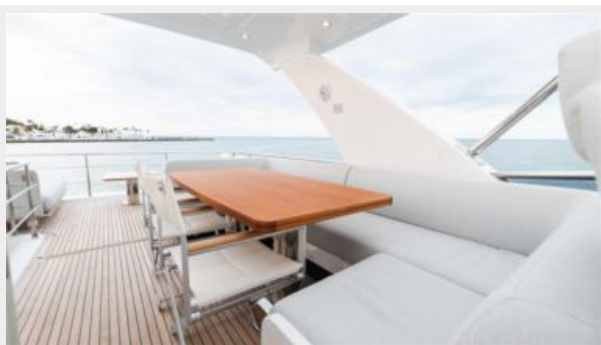
28



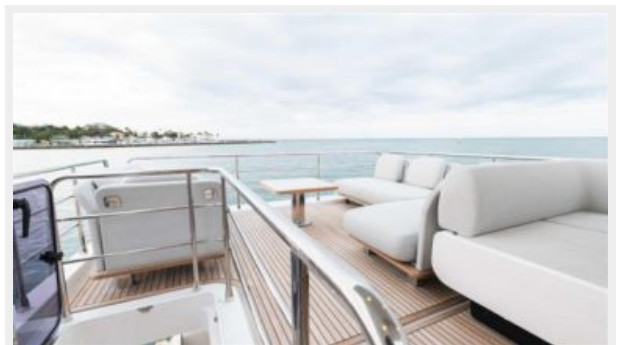
29



30

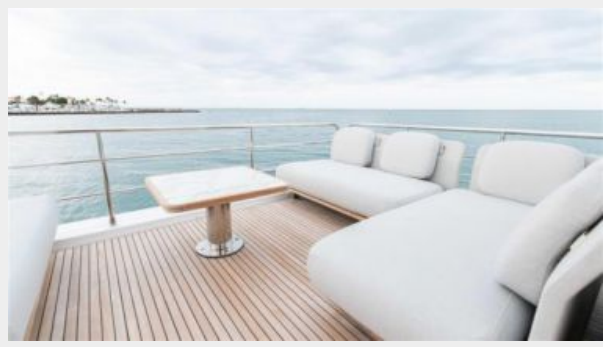


31

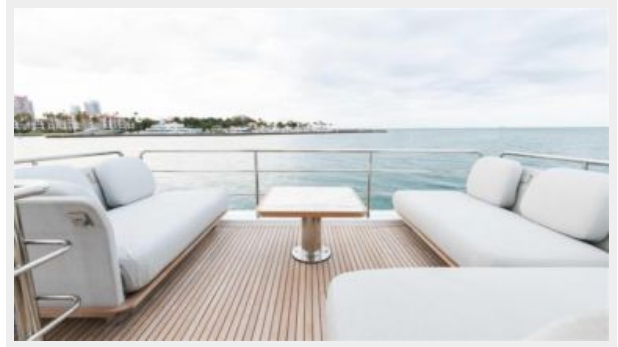




32



33



34



35



36



37



38



39



40



41



42



43



44



45



46



47





48



49



50



51



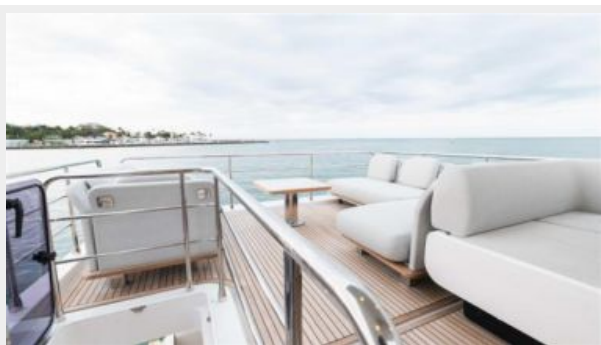
52



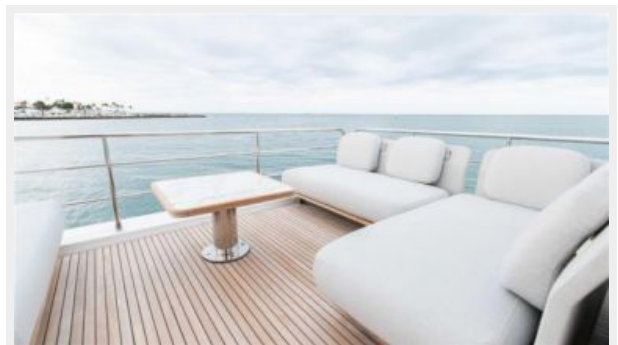
53



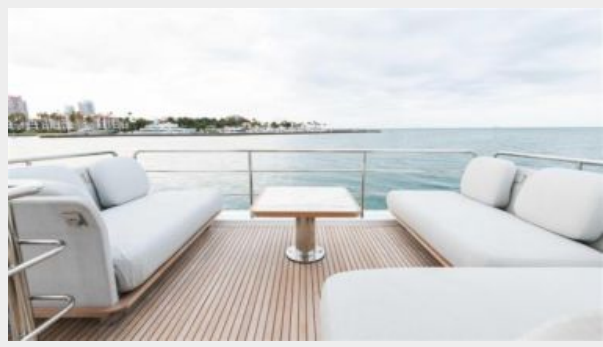
54



55



56



57



58



59



60



61



62



63





64



65



66



67



68



69



70



71



72



73



74



75



76



77



78



79





80



81



82



83



84



85



86



87



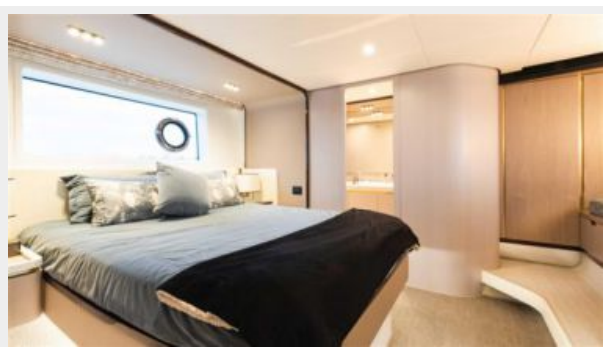
88



89



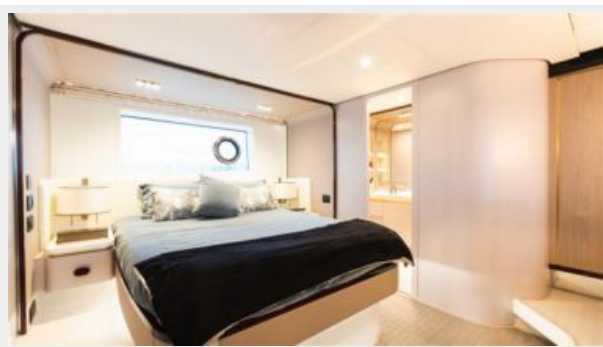
90



91



92



93



94

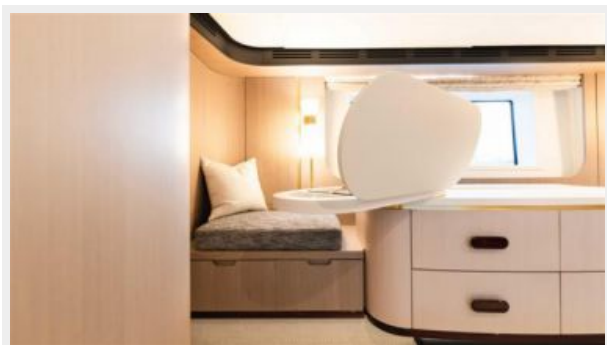


95





96



97



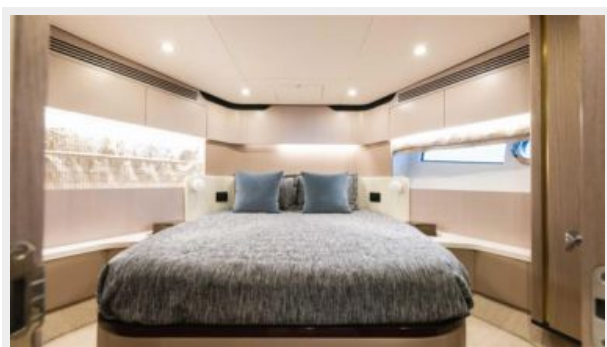
99



98



100



101



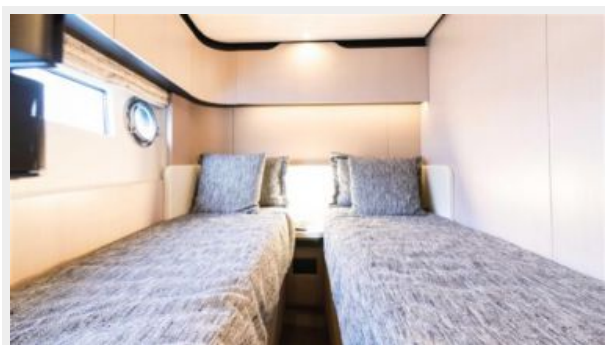
102



103



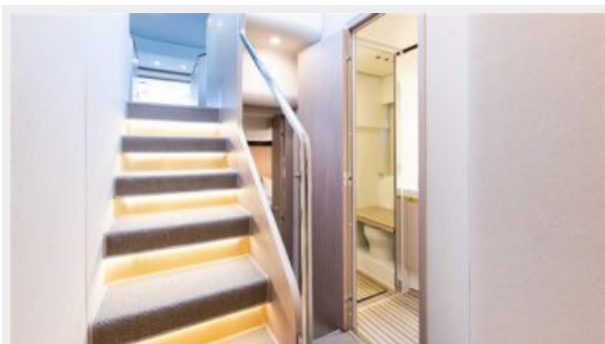
104



105



106



107



# КОНТАКТЫ

---

Андрей Шестаков (Andrey Shestakov) – ведущий яхтенный брокер отдела продаж яхт и судов компании Shestakov Yacht Sales Inc. Официальный представитель Shestakov Yacht Sales Inc. для русскоговорящих клиентов в центральном офисе компании в Майами/Форт Лодердейл/Флорида/США.

## Контактная информация

---

Email: [andrey@shestakovyachtsales.com](mailto:andrey@shestakovyachtsales.com)

Web: [shestakovyachtsales.com](http://shestakovyachtsales.com)

## Телефоны

---

Краснодарский край: **+7(918)465-66-44**

США, Майами, Флорида: **+1(954)274-4435**

## Время работы

---

Понедельник – Суббота: **9:00 - 21:00**  
EDT

Воскресенье: **Закрито**

## Адрес

---



Harbour Towne Marina, 850 NE 3rd St,  
STE 213, Dania, FL 33004