

## GEAR JAMMER — HATTERAS



**Builder:** HATTERAS

**Year Built:** 2017

**Model:** Sport Fisherman

**Price:** PRICE ON APPLICATION

**Location:** United States

**LOA:** 70' 0" (21.34m)

**Beam:** 21' 4" (6.50m)

**Min Draft:** 5' 0" (1.52m)

**Max Draft:** 5' 0" (1.52m)

Our experienced yacht broker, Andrey Shestakov, will help you choose and buy a yacht that best suits your needs **Gear Jammer — HATTERAS** from our catalogue. Presently, at Shestakov Yacht Sales Inc., we have a wide variety of yachts available on our sale's list. We also work in close contact with all the big yacht manufacturers from all over the world.

If you would like to buy a yacht **Gear Jammer — HATTERAS** or would like help answering any questions concerning purchasing, selling or chartering a yacht, please call **+1(954)274-4435**

# TABLE OF CONTENTS

TABLE OF CONTENTS	2
SPECIFICATIONS	5
Overview	5
Basic Information	5
Dimensions	5
Speed, Capacities and Weight	6
Accommodations	6
Hull and Deck Information	6
Engine Information	6
DETAILED INFORMATION	7
Manufacturer Provided Description	7
Hatteras Factory Upgrades	7
Standard Equipment	8
HighSeas Technology Marine Electronics Package	16
Pipewelders	17
Exclusions	17
Disclaimer	17
PHOTOS	18
2	18
3	18
4	18
5	18
6	18
7	18
8	19
9	19
11	19
10	19

13	19
12	19
14	20
15	20
16	20
17	20
18	20
19	20
20	21
21	21
22	21
23	21
24	21
25	21
26	22
27	22
28	22
29	22
30	23
31	23
32	23
33	23
34	23
35	23
36	24
37	24
38	24
39	24
40	24

DSC_3241	24
DSC_3261	25
CONTACTS	26
Contact details	26
Telephones	26
Office hours	26
Address	26

# SPECIFICATIONS

## Overview

Offered for sale by her original owner, "Gear Jammer" is a stunning flagship of the Hatteras sport fish fleet

Beautifully customized and appointed by the Hatteras design team throughout with incredible attention to detail and only the highest grade fit and finish

Built with CAT-32A 1900hp engines for ease of maintenance and operation with a top speed of over 40mph

HUGE range of over 525 miles at cruising speed!

Zero speed fin stabilizers offer the ultimate in comfort while bottom fishing, trolling or cruising

See full specs for lengthy options list

## Basic Information

Category: Sport Fisherman	Model Year: 2017
Year Built: 2017	Country: United States
Vessel Top: Full / Tuna Tower	Fly Bridge: Yes

## Dimensions

LOA: 70' 0" (21.34m)	LWL: 61' 4" (18.69m)
Beam: 21' 4" (6.50m)	Min Draft: 5' 0" (1.52m)
Max Draft: 5' 0" (1.52m)	Clearance: 15' 4" (4.67m)

---

## Speed, Capacities and Weight

---

**Displacement:** 120000 Pounds

**Water Capacity:** 330 Gallons

**Holding Tank:** 215 Gallons

**Fuel Capacity:** 2140 Gallons

---

## Accommodations

---

**Total Cabins:** 5

**Total Heads:** 4

---

## Hull and Deck Information

---

**Hull Material:** Fiberglass

**Hull Designer:** Hatteras Yachts

**Exterior Designer:** Hatteras Yachts

**Interior Designer:** Hatteras Yachts

---

## Engine Information

---

**Engines:** 2

**Manufacturer:** CAT

**Model:** C-32A

**Engine Type:** Inboard

**Fuel Type:** Diesel

---

# DETAILED INFORMATION

---

---

## Manufacturer Provided Description

---

The GT70 is engineered to excel under tough conditions, while offering a host of features and amenities that define the premium sportfish category. It is built on a variable deadrise bottom with a sharp entry and powered by twin CAT C-32A diesels, it is a workhorse with the bearing and grace of a thoroughbred.

Inside, you'll find a lavish interior, from the gourmet galley and spacious salon to the five-stateroom, four-head accommodations. In taking cues from the celebrated Hatteras style and legendary performance, the GT70 offers the ultimate tournament sportfishing platform.

---

## Hatteras Factory Upgrades

---

- Bow Thruster
- Additional Fuel Tank, 700 Gallons
- Additional 120V outlet under helm
- High gloss teak sketch face rounded top stateroom and entry doors
- (4) Lumishore LED color change underwater lights
- Flybridge Air Conditioning
- Mezzanine Cockpit Air Conditioning
- Palma Blue Metallic Hull Paint
- LED TV in Crew Cabin
- VIP Head in Bow Mirrored Ceiling
- Master Head Mirrored Ceiling
- Port Guest Head Mirrored Ceiling
- Eskimo Ice Machine Plumbed to Cockpit
- Flybridge Fresh Water Spigot
- (6) Additional Cockpit Wing Board Rod Holders, 3 Each Side
- Cockpit Teak Coaming Boards
- Cockpit Teak Covering Boards
- Cockpit Teak Decking
- Cockpit Teak Mezzanine Deck
- Flybridge Teak Helm Pod
- Faux Teak Salon Entry Door, Pneumatic Ram Open/Close
- Flybridge Teak Accent Strip
- Finished Wood Berth Keepers, Master and VIP Bow Staterooms
- Flush Entry Hatch to Bridge Deck
- Kenyon Electric Grill in Cockpit
- Black Satin Paint in Inside of Helm Instrument Compartments
- Cockpit Teaser Reel Plugs (12V)

- Salon Sound Deadening Sub Floor Layer
- Upgrade to Meile Cooktop in Galley
- FCI 1850 GPD Watermaker
- Zero Spot 1500 GPD Spot Zero Water System
- Zero Speed Stabilizer Fins
- Stainless Steel Anchor Chute on Bow
- 600' of Anchor Line with 30' of Chain
- Chill Plate in Port Cockpit Fish Box
- 50" LED TV Installed in Dinette Bulkhead
- Carpet Runners Throughout
- Custom Glass Storage Compartment Port Salon
- Custom Extended Bow Rail Back to Cockpit w/Lift up Section to Lay Down Outriggers
- Upgraded Master Stateroom HMC System 6 Mattress
- Release Marine Teak Salon Cocktail Table
- Custom Salon Sectional Sofa with Integrated Flip up Bottom and Backrest Cushions on Gas Support Struts for Easy Storage Access
- Custom Pillows and Bedspreads Throughout Chosen by Interior Designer
- Custom Coffeemaker in Galley Connected to Fresh Water System Onboard
- Release Marine Trillion Series Helm Chair Upgrade (3) Includes Contoured Seat and Back, Teak Ladder Back and Teak Footboard
- Release Marine Trillion Series Fighting Chair Upgrade with Footrest
- Winslow 10 Man Super Light Offshore Plus Liferaft
- Hi-Seas Technology Full Electronics Package (See Navigation Electronics Section for Details)
- Pipewelders Full Tower Package (See Tower Section for Details)

---

## Standard Equipment

---

### Salon

- Carpeting
- Salon aft entry synthetic wood-style flooring
- Fabric headliner with wood accents installed on track system for service access
- Automatic door to cockpit
- 40" class TV
- BOSE Lifestyle V-35 home theater with Wifi enabled Blu-ray player
- Polished stainless-steel threshold at salon door
- Fixed frameless windows with tinted safety glass
- DC LED dimmable lighting
- Ice maker
- Sofa with rod storage and throw pillows
- HVAC control
- Smoke and carbon monoxide detectors



## Galley/Dinette

- Synthetic wood-style flooring
- Fabric headliner installed on track system for service access
- Dinette seating with storage underneath and wood table with stainless steel pedestal
- Bar stools
- Granite countertops and wood cabinetry
- Fixed frameless windows with tinted safety glass
- Wood inserts to match interior finish on appliance fascia
- AC under counter refrigerator and freezer drawer units (2 Refrigerators, 1 Fridge/Freezer)
- Microwave/convection oven
- AC four-burner ceramic cook top
- Garbage disposal
- AC duplex outlet(s) with ground fault protection
- DC LED dimmable lighting

## Companionway

- Carpeting
- Fabric headliner installed on track system for service access
- Cedar-lined port companionway locker
- Fabric covered hull side(s) and bulkhead(s) installed on track system for service access
- Lighted stairway to salon
- DC LED lighting
- Lighted port and starboard attic space with access to electric panels and water tank gauge
- Wainscoting
- Washer/dryer closet

## Master Stateroom

- Carpeting
- Fabric headliner on track system for service access
- Fabric covered bulkhead(s) installed on track system for service access
- King-sized berth with upholstered headboard and cedar-lined storage underneath
- HMC System 4 mattress, spread, throw pillows, pillows, pillow shams, mattress pad and sheets
- Cedar-lined closet with automatic light
- Nightstands
- Full-length mirror
- Private head access
- AC duplex outlet(s) with ground fault protection
- DC LED dimmable lighting
- DC low-voltage lights under berth
- 40" class TV
- BOSE Lifestyle 235 home theater system with Wifi enable Blu-ray player

- Wainscoting
- HVAC control
- Smoke and carbon monoxide detectors

## Master Head

- Synthetic wood-style flooring
- Hardwood baseboards
- Fabric headliner installed on track system for service access
- Wall covering
- Granite countertops and backsplash, with sink
- Storage cabinet with mirror above sink
- Base cabinet to match interior finish with storage
- Cabinet with finished soffit
- Shower with door and automatic sump pump
- Freshwater toilet
- Towel bar, towel ring, tissue holder, robe hook
- 120 volt AC recirculating fan
- AC duplex outlet(s) with ground fault protection
- DC LED lighting
- Holding tank 3/4 full indicator light

## Bow Guest Stateroom

- Carpeting
- Fabric headliner installed on track system for service access
- Fabric covered hull side(s) and bulkhead(s) installed on track system for service access
- Queen-sized tapered berth with upholstered headboard and cedar-lined storage underneath
- HMC mattress, spread, throw pillows, pillows, pillow shams, mattress pad and sheets
- Port and starboard locker storage
- Cedar-lined hanging/storage lockers with automatic light
- Nightstands
- 32" class TV
- DC AM/FM stereo with CD player and speakers
- Full-length mirror
- Private head access
- Screened overhead hatch with privacy cover
- AC duplex outlet(s)
- DC LED lighting
- HVAC control
- Smoke and carbon monoxide detectors

## Port Forward Guest Stateroom

- Carpeting
- Fabric headliner installed on track system for service access
- Fabric covered hull side(s) and bulkhead(s) installed on track system for service access
- Two berths, upper pullman, lower storage
- HMC mattress, spread, throw pillows, pillows, pillow shams, mattress pad and sheets
- Cedar-lined hanging locker with door and automatic light
- 22" class TV
- Full-length mirror
- AC duplex outlet(s)
- DC LED lighting
- HVAC control
- Smoke and carbon monoxide detectors

### Port Aft Guest Stateroom

- Carpeting
- Fabric headliner installed on track system for service access
- Fabric covered hull side(s) and bulkhead(s) installed on track system for service access
- Two berths, upper pullman, lower storage
- HMC mattress, spread, throw pillows, pillows, pillow shams, mattress pad and sheets
- Cedar-lined hanging locker with door and automatic light
- 22" class TV
- Private head access
- Full-length mirror
- AC duplex outlet(s) with ground fault protection
- DC LED lighting
- HVAC control
- Smoke and carbon monoxide detectors

### Guest Heads

- Synthetic wood-style flooring
- Hardwood baseboards
- Fabric headliner installed on track system for service access
- Wall covering
- Solid-surface countertop, backsplash, with sink
- Storage cabinet with mirror above sink
- Base cabinet to match interior finish with storage
- Cabinet with finished soffit
- Shower with door and automatic sump pump
- Freshwater toilet
- Towel bar, towel ring, tissue holder, robe hook
- 120 volt AC recirculating fan
- AC duplex outlet(s) with ground fault protection
- DC LED lighting

- Holding tank 3/4 full indicator light

## Crew

- Carpeting
- Fabric headliner installed on track system for service access
- Fabric covered hull side(s) and bulkhead(s) installed on track system for service access
- Two berths, upper pullman, lower storage
- HMC mattress, spread, throw pillows, pillows, pillow shams, mattress pad and sheets
- Cedar-lined hanging locker with door and automatic light
- 22" class TV
- Nightstand
- Full-length mirror
- Private head access
- Center line engine room access
- AC duplex outlet(s) with ground fault protection
- DC LED lighting
- Smoke and carbon monoxide detectors

## Crew Head

- Synthetic wood-style flooring
- Hardwood baseboards
- Fabric headliner installed on track system for service access
- Wall covering
- Solid-surface countertop, backsplash, with sink
- Base cabinet to match interior finish with storage
- Shower with door and automatic sump pump
- Freshwater toilet
- Towel bar, towel ring, tissue holder, robe hook
- 120 volt AC recirculating fan
- AC duplex outlet(s) with ground fault protection
- DC LED lighting
- Holding tank 3/4 full indicator light

## Cockpit

- Molded fiberglass, 200 square feet including mezzanine with seating
- Seating with cushions across upper mezzanine
- Automatic sliding glass door to deckhouse
- Hatch with chrome plated brass lock to engine compartment
- Lazarette access hatch
- Transom door
- Lift up coaming gate
- Bait and tackle center with three drawers and cutting board

- Insulated storage tub 6 cubic foot (port mezzanine)
- Refrigerated drink box in top steps leading to salon
- Insulated starboard mezzanine (9.7 cubic foot)
- Insulated bait box with rack system (5.0 cubic-foot)
- Fiberglass step box with storage
- DC LED overhead lights under flybridge overhang
- Cockpit scuppers and hatches
- Aluminum mounting plate laminated in deck for fighting chair
- Four polished 316 stainless-steel rod holders, flush mount
- Two 65-inch fish boxes with macerator, flush in deck
- Molded-in transom livewell (50 gallons)
- Freshwater wash down outlet
- Saltwater washdown with on-deck livewell connection
- Stereo speakers with volume control
- Combing lights

## Electrical Systems

- Two 24 volt banks of heavy-duty, 12 volt marine batteries (4 AGM) mounted in fire retardant fiberglass boxes
- Wiring, tin-coated with insulation (labeled and color coded)
- Automatic 240 volt battery charger, 50/60Hz
- Automatic battery paralleling system with switch at helm
- Battery control panel with fuses and isolation switches
- AC and DC distribution panels with magnetic circuit breakers
- AC switching panel with source selector switches, volt meter, ammeter, frequency meter, distribution panel selector switches
- DC electronics panel with magnetic circuit breakers
- Two 240 volt, 50 amp, shore cords with overcurrent protection, (one retractable, one fixed)
- Two 12kva polarization shoreline transformers with low voltage boost function
- Ground fault protection on AC receptacles and AC lighting circuits
- AC duplex outlet(s) with ground fault protection
- DC LED lights and fixtures
- USCG International navigation lights
- Ventilation fans for electronics in attic space
- Air conditioning, 64,000 BTU's, with reverse cycle heating
- TV antenna, Omni-directional
- Systems monitor with programmable logic controller read-out, visual and audible signals for exhaust temperature, alternator, battery voltage, high bilge water, fire warning in engine compartment, fire extinguisher discharge in engine room, AC power loss, smoke and carbon monoxide detectors, and holding tank 3/4 full monitor
- VHF radio, digital depth and temp
- Two bench seats
- Control station with all necessary switches and dimmable lighted instrument panel

- Compass with dimmable light
- Pod console with steering wheel
- Hydraulic power-assisted steering
- Three helm chairs
- Two reversible riding seat backs
- Freshwater outlet
- DC AM/FM stereo and speakers
- Neutral interlock switches allowing engine to start in neutral only
- Fuel level gauges
- Rod storage under port and starboard benches
- Top-loading freezer
- Additional storage areas beneath seat(s) and Console

## Engine Compartment & Bilge

- Painted polyurethane engine room and bilges
- Stainless grab rails
- Rubber deck mat between engines
- Insulation in engine room ceiling, for noise mitigation in salon
- AC fluorescent lights
- DC lights
- DC bilge blowers
- Twin diesel, freshwater-cooled main engines with electrically controlled marine gears, neutral interlocks, exhaust silencers, engine hour meters, alternators, fuel filters and seawater strainers
- Fiberglass fuel tank constructed with fire retardant resin and bronze fittings
- United States Coast Guard type A1 U.L. Marine listed fuel lines
- Electric fuel priming pumps, engines
- U.L. Marine-listed duplex fuel filters/water separators, engines and generators
- Fiberglass water tank
- Polyethylene water lines
- 230 volt AC freshwater pump
- 230-volt AC 40-gallon electric water heaters
- Polyethylene sewage holding tank with 24 volt DC sewage pump, plumbed for dockside pump-out with 3/4 full display and alarm as part of systems monitor programmable logic controller
- Sealed shower sumps
- 24-volt DC bilge and sump pumps: three (3) at 3700 gph, one (1) at 500 gph, with heavy duty float switches and protective guards
- Auxiliary emergency bilge pump, 150 gpm in lazarette
- Bronze/chrome-plated ball-valves through-bolted in solid fiberglass on all underwater through hull fittings with electrical bonding throughout
- Individual sea chests for each engine and gensets, high speed seachest for water makers, air conditioners, raw water pumps

- Discharge sea chest
- Painted pultruded fiberglass rudder shelf bolted to steel plates in the stringers
- Stainless-steel steering tie bar with pivoting self aligning ball joint connection at all cylinder and tie bar connections
- Patented differential steering system for improved control in high speed turns (Patent # 7895959B1)
- Shore water connection with pressure-reducing Valve
- 220 volt AC air compressor with regulator
- 110 volt oil change system for engine gears and generators
- Transducer location molded into hull bottom
- FM200 fixed fire extinguishing system for engine compartment with automatic and remote manual controls, audible and visual discharge signals
- DC voltmeter in battery panel
- Engine start / stop switches with hour meter

## Hardware & Miscellaneous

- Wood interior bulkheads, cabinetry and trim: flush-filled african mahogany, walnut, white oak, or teak; all with satin or high gloss finish
- All interior hardware in chrome
- Bow deck anchor locker
- Anchor, 25' chain, 300' anchor line
- Four polished stainless-steel spring cleats with chafing strips, through bolted in aluminum backing plate
- Two polished stainless-steel bow cleats and chocks with chafing strips, through bolts, stern cleats and hawse pipes, through-bolted in aluminum backing plate
- Polished anodized welded aluminum bow rail, flybridge, and ladder
- Stern cleats and hawse fastened in aluminum backing plate
- Keyless deck plates for fuel, water fill and waste pump out
- Stainless-steel rudders
- Fog bell
- Dual air horn
- Transom zinc
- Manganese bronze rudder bearings with dripless seals
- Heavy duty manganese bronze engine couplings
- Alloy 22 high-strength propeller shafts tapered with round keys for reduced stress concentrations at propeller and coupling ends
- Dripless shaft seals with spare seals
- Manganese bronze struts
- Propellers, Nibral high performance
- Stainless-steel trim tabs
- Life jackets (10)
- Life ring
- Portable "drychem" fire extinguishers (6), U.L. approved type in compliance with United

States Coast Guard and ABYC standards

- Braided nylon mooring lines (6)
- Black fenders (3)
- Water delivery kit
- Prop removal and installation tool

## Exterior Finish / Construction

- Isophthalic gel coat, exterior layer, white (all areas except hull bottom)
- Blister resistant vinylester gel coat, white (hull bottom)
- Painted hull and superstructure for improved cosmetics & increased durability
- Polymer/copper based anti-fouling bottom paint
- Painted boot stripe, choice of colors
- Decks, painted non-skid surface
- Solid fiberglass, resin-infused hull bottom, with premium vinylester resins
- Hull sides of resin infused composite construction with closed cell foam core and premium vinylester resins
- Solid fiberglass, resin-infused longitudinal stringers
- Steel infused into longitudinal stringers at key locations to create engine foundations
- Bulkheads, athwartship frames and interior decks of resin-infused composite construction using closed cell foam core
- Painted black mask
- Bow deck freshwater wash down

## HighSeas Technology Marine Electronics Package

- **Radar-** Garmin: GMR1226XHD2-6 12KW open Array Radar with 6' Antenna
- **Processors-** (4) Garmin: GPSMAP 8617 17" HD touchscreen MFD and Garmin card reader for 2 mapping SD Cards
- **Weather System-** Garmin: GXM52 XM Satellite antenna and Garmin: AIS 600
- **Sounder-** Garmin: GSD -26 Digital Black box network sounder and Garmin: CM599LHW pocket mounted beam transducer
- **Autopilot-** Garmin: GHP reactor hydraulic corepack with smartpump
- **2nd VHF-** ICOM: M604 VHF radio, ICOM: MB75 Flush mount Kit, and SPECO: SPC15 Hailer Horn
- **Night Vision Camera-** FLIR: M625L HD Night vision camera system
- **Spot Light-** ACR: RCL-100D 24V Remote control searchlight
- **Satellite TV Antenna-** KVVH: Tracvision HD7 US SAT TV System
- **Satellite TV Components-** (6) KVVH: H25 HDTV DirectTV receiver for HD7 and HD11 only – US service
- **SAT-FI-System-** Globalstar: SAT-FI Satellite hotspot
- **UPS-** APC: 620 Smart UPS
- **Flybridge Stereo-** Fusion: MS-NRX200I Full function remote



- **Engine Room Cameras-** (3) Garmin: GC10 Marine Camera
- **Tower Electronics-** Garmin: GPSMAP 7612 12- inch Multi-touch widescreen Chartplotter, Garmin: GHC20 Marine Autopilot control unit, and ICOM: IC-HM162B Command MIC3

---

## Pipewelders

---

- **Tuna Tower-** Molded top single rail, 7' GAP, and Polished bends on bowlegs and braces.
- **Tower Sunshade-** 60" Molded top, bench seat fixed with backrest 60", (2) red, white, and blue tri colored recessed LED lights installed.
- **Tower Control Box-** Edson Marine Satin Stainless 13" Steering Wheel, Compass: Black flush mounted Richie Model F82, Anchor run lights, cup holder molded in control box.
- **Molded Standing Platform-** one piece molded standing platform 60-69, Flood light: LED Style -dimmable- linear 2 in 1 pod, Flood light: LED Style- dimmable- linear single pod, (4) red, white, and blue tri colored recessed LED lights installed, washdown water in tower with bladder tank to increase water pressure.
- **Hardtop Accessories-** Teaser reel bracket and sliding door installed in hardtop, and (2) teaser reels-super US9HDR.
- **Outriggers-** Outrigger 50' 4-Spreader, super lightweight riggers bridge release PW-SUPER stiff arm, and Center Rigger: Pipewelders tapered pole 15'.
- **Hydraulic Outrigger Option-** KIT: Hydro-rigger, layout only and HYDRO-LOCK.
- **Curtain Enclosure-** "Seacrylic" 70-79 per panel.

---

## Exclusions

---

Owner's personal belongings.

---

## Disclaimer

---

The Company offers the details of this vessel or yacht in good faith but cannot guarantee or warrant the accuracy of this information nor warrant the condition of the vessel. A buyer should instruct his representatives, agents, or his surveyors, to investigate such details as the buyer desires validated. This vessel or yacht is offered subject to prior sale, price change, or withdrawal without notice.

# PHOTOS

2



3



4



5



6



7



8



9



10



11



12

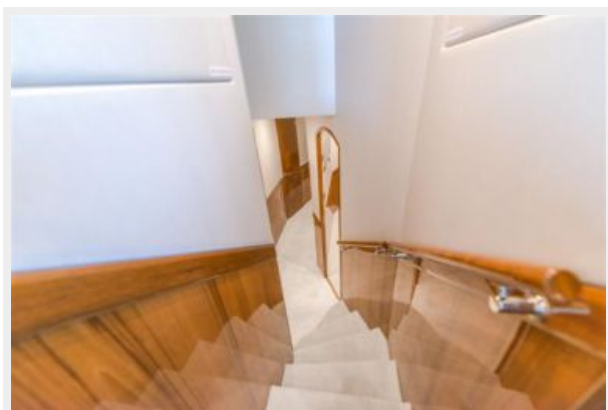


13

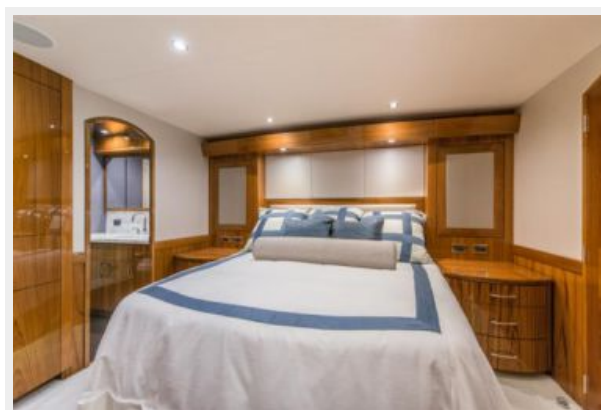




14



15



16



17



18



19



20



21



22



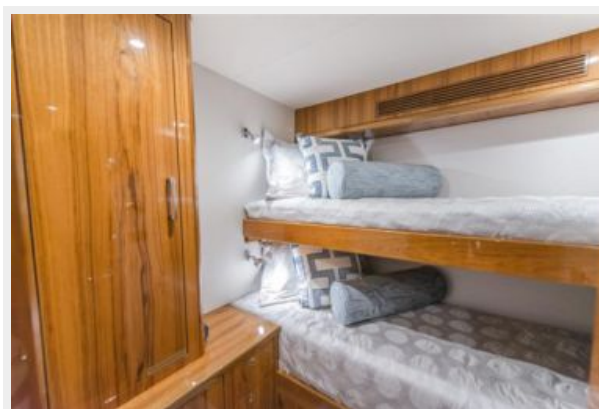
23



24



25



26



27



28



29





30



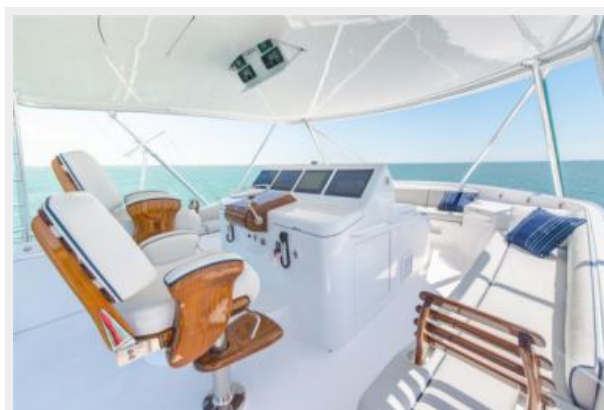
31



32



33



34



35



36



37



38



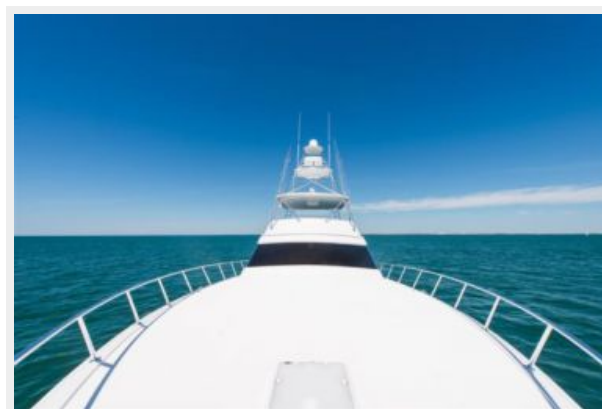
39



40



DSC\_3241





## DSC\_3261



# CONTACTS

---

Andrey Shestakov, leading yacht broker of the sales department of Shestakov Yacht Sales Inc. Shestakov Yacht Sales Inc., the official representative of the Miami/Fort Lauderdale FL headquarters.

## Contact details

---

Email: **andrey@shestakovyachtsales.com**

Web: [shestakovyachtsales.com/en/](http://shestakovyachtsales.com/en/)

## Telephones

---

USA: **+1(954)274-4435**

## Office hours

---

Monday – Saturday: **9:00 - 21:00 EDT**

Sunday: **closed**

## Address

---



Harbour Towne Marina, 850 NE 3rd St,  
STE 213, Dania, FL 33004