

BELLA RONA — FERRETTI YACHTS



Судостроитель: FERRETTI YACHTS

Год постройки: 2016

Модель: Моторная яхта

Цена: ЦЕНА ЯХТЫ ПО ЗАПРОСУ

Местонахождение: United States

Длина общая: 80' 0" (24.38m)

Ширина: 20' 7" (6.27m)

Макс. осадка: 6' 2" (1.88m)

Крейс. скорость: 24.331334776 Kts. (28 MPH)

Макс. скорость: 28.241727865 Kts. (33 MPH)

Купить **Bella Rona — FERRETTI YACHTS** а также выбрать подходящую вам яхту из нашего каталога яхт вам поможет опытный яхтенный брокер Андрей Шестаков. На сегодняшний день компания **Shestakov Yacht Sales Inc.** имеет большое количество яхт в собственном списке продаж, а также тесно сотрудничает со всеми крупными яхтенными производителями по всему миру.

Для того чтобы купить яхту **Bella Rona — FERRETTI YACHTS** а также проконсультироваться по любому вопросу связанному с покупкой, продажей, чартером яхт позвоните по телефону **+7(918)465-66-44**.

ОГЛАВЛЕНИЕ

ОГЛАВЛЕНИЕ	2
ХАРАКТЕРИСТИКИ	6
Обзор	6
Основная информация	6
Размеры	6
Скорость, вместимость и масса	7
Размещение	7
Корпус и палуба	7
Информация о двигателе	7
ПОДРОБНОЕ ОПИСАНИЕ	8
Description	8
Factory Options	8
Standard Equipment	9
Flybridge	13
Lower Deck	14
Crew Area	17
Technical Area	18
Исключения	20
Отказ от ответственности	20
ФОТОГРАФИИ	22
"Bella Rona" 2016 Ferretti 800 - Profile	22
"Bella Rona" 2016 Ferretti 800 - Running	22
"Bella Rona" 2016 Ferretti 800 - Top	22
"Bella Rona" 2016 Ferretti 800 - Profile	22
"Bella Rona" 2016 Ferretti 800 - Profile	23
"Bella Rona" 2016 Ferretti 800 - Profile	23
"Bella Rona" 2016 Ferretti 800 -Stern	23
"Bella Rona" 2016 Ferretti 800 - Top	23

"Bella Rona" 2016 Ferretti 800 -Bow	24
"Bella Rona" 2016 Ferretti 800 - Bow	24
"Bella Rona" 2016 Ferretti 800 - Bow	24
"Bella Rona" 2016 Ferretti 800 - Bow	24
"Bella Rona" 2016 Ferretti 800 - Flybridge Helm	24
"Bella Rona" 2016 Ferretti 800 - Flybridge	24
"Bella Rona" 2016 Ferretti 800 - Flybridge Helm	25
"Bella Rona" 2016 Ferretti 800 - Flybridge Seating	25
"Bella Rona" 2016 Ferretti 800 - Flybridge Seating	25
"Bella Rona" 2016 Ferretti 800 - Flybridge Seating	25
"Bella Rona" 2016 Ferretti 800 - Flybridge Seating	25
"Bella Rona" 2016 Ferretti 800 - Flybridge	25
"Bella Rona" 2016 Ferretti 800 - Flybridge Seating	26
"Bella Rona" 2016 Ferretti 800 - Flybridge / Tender	26
"Bella Rona" 2016 Ferretti 800	26
"Bella Rona" 2016 Ferretti 800 - Flybridge / Tender	26
"Bella Rona" 2016 Ferretti 800 - Flybridge Stairs	27
"Bella Rona" 2016 Ferretti 800 - Stern Seating	27
"Bella Rona" 2016 Ferretti 800 - Stern Seating	27
"Bella Rona" 2016 Ferretti 800 - Salon	27
"Bella Rona" 2016 Ferretti 800 - Salon	28
"Bella Rona" 2016 Ferretti 800 - Salon	28
"Bella Rona" 2016 Ferretti 800 - Salon	28
"Bella Rona" 2016 Ferretti 800 - Salon	28
"Bella Rona" 2016 Ferretti 800 - Dinning	28
"Bella Rona" 2016 Ferretti 800 - Dinning	28
"Bella Rona" 2016 Ferretti 800 - Dinning	29
"Bella Rona" 2016 Ferretti 800 - Galley	29
"Bella Rona" 2016 Ferretti 800 - Galley	29

"Bella Rona" 2016 Ferretti 800 - Galley	29
"Bella Rona" 2016 Ferretti 800 - Galley	30
"Bella Rona" 2016 Ferretti 800 - Galley	30
"Bella Rona" 2016 Ferretti 800 - Helm Station	30
"Bella Rona" 2016 Ferretti 800 - Helm Station	30
"Bella Rona" 2016 Ferretti 800 -Stair Way	31
"Bella Rona" 2016 Ferretti 800 - Helm Station	31
"Bella Rona" 2016 Ferretti 800 - Master Stateroom	31
"Bella Rona" 2016 Ferretti 800 - Master Stateroom	31
"Bella Rona" 2016 Ferretti 800 - Master Stateroom	32
"Bella Rona" 2016 Ferretti 800 - Master Stateroom	32
"Bella Rona" 2016 Ferretti 800 - Master Head	32
"Bella Rona" 2016 Ferretti 800 - Master Head	32
"Bella Rona" 2016 Ferretti 800 -VIP Stateroom	33
"Bella Rona" 2016 Ferretti 800 -VIP Stateroom	33
"Bella Rona" 2016 Ferretti 800 -VIP Stateroom	33
"Bella Rona" 2016 Ferretti 800 -VIP Stateroom	33
"Bella Rona" 2016 Ferretti 800 - Head	33
"Bella Rona" 2016 Ferretti 800 -VIP Stateroom	33
"Bella Rona" 2016 Ferretti 800 - Laundry	34
"Bella Rona" 2016 Ferretti 800 - Guest Stateroom	34
"Bella Rona" 2016 Ferretti 800 - Engine Room	34
"Bella Rona" 2016 Ferretti 800 - Engine Room	34
"Bella Rona" 2016 Ferretti 800 - Propellers	35
"Bella Rona" 2016 Ferretti 800 - Engine Room	35
"Bella Rona" 2016 Ferretti 800 - Propellers	35
"Bella Rona" 2016 Ferretti 800 - Propellers	35
КОНТАКТЫ	36
Контактная информация	36

Телефоны	36
Время работы	36
Адрес	36

ХАРАКТЕРИСТИКИ

Обзор

Bella Rona is an immaculate, in better than new condition, 1 owner 800 Ferretti, built 60hz for the American market with upgraded Generators and Tropical Air Conditioning. This is the best kept and nicest 80 foot Motor Yacht on the market today. Always maintained by the same captain/ crew and the same owner since new. Easy to see in Fort Lauderdale

Here are some notable features that can't be looked over:

- Full Awlgrip Paint Job from the bottom paint up; hull and superstructure, performed by Paramount Yacht Refinishing at Rolly Marine- July 2019
- Full 5 Year MTU warranty; estimate 1 ½ years remaining
- Upgraded Walnut Interior Wood
- All teak deck caulking replaced August 2019
- 10 underwater lights
- Engines and Generators serviced July 2019
- SeaKeepers serviced March 2020
- New Zincs, Bottom Paint and Prop Speed July 2019
- Shafts scoped, props S-Classed

Основная информация

Тип судна: Моторная яхта

Подкатегория: Flybridge

Модельный год: 2016

Год постройки: 2016

Страна: United States

Размеры

Длина общая: 80' 0" (24.38m)

Длина по ватерлинии: 67' 8" (20.62m)

Ширина: 20' 7" (6.27m)

Макс. осадка: 6' 2" (1.88m)

Скорость, вместимость и масса

Крейс. скорость: 24.331334776 Kts. (28 MPH) **Дальность на крейсерской скорости:** 310

Макс. скорость: 28.241727865 Kts. (33 MPH) **Водоизмещение:** 362422.32174704 Pounds

Чистый вес: 75930 Pounds **Вместимость воды:** 349 Gallons

Вместимость сточного бака: 20 Gallons **Объем топливного бака:** 1783 Gallons

Размещение

Всего кают: 4

Корпус и палуба

Материал корпуса: Fiberglass

Информация о двигателе

Двигатели: 2 **Производитель:** MTU

Модель: 12V 2000 M96L **Тип двигателя:** Inboard

Тип топлива: Diesel

ПОДРОБНОЕ ОПИСАНИЕ

Description

Bella Rona is an immaculate, in better than new condition, 1 owner 800 Ferretti, built 60hz for the American market with upgraded Generators and Tropical Air Conditioning. This is the best kept and nicest 80 foot Motor Yacht on the market today. Always maintained by the same captain/ crew and the same owner since new. Easy to see in Fort Lauderdale

Here are some notable features that can't be looked over:

- Full Awlgrip Paint Job from the bottom paint up; hull and superstructure, performed by Paramount Yacht Refinishing at Rolly Marine- July 2019
- Full 5 Year MTU warranty; estimate 2 ½ years remaining
- Upgraded Walnut Interior Wood
- All teak deck caulking replaced August 2019
- 10 underwater lights
- Engines and Generators serviced July 2019
- SeaKeepers serviced March 2020
- New Zincs, Bottom Paint and Prop Speed July 2019
- Shafts scoped, props S-Classed

Factory Options

- Upgraded engine MTU 1948 HP
- Upgraded Boat wood- Walnut
- F800 Hard Top version
- Anti rolling gyro stabilizers (Sea Keeper)
- Wooden floor in bathrooms without stripes
- Upgraded walls in boat
- Lamp over dining table: lacquered white
- Parquet custom flooring for main deck
- Wastemincer in galley (usa)
- Upgraded dining table karnak
- Tv 22" lcd/led a/ntsc, us version (in vip and guest cabins)
- Decoder sat hd usa (in vip and guest cabins)
- Watertight socket 110v (on fly inside bar furniture)
- Main deck salon rug in salon
- Upgraded fly and cockpit cushions pacific star
- Upgraded bedcovers in master, VIP and guest cabins
- Assorted decorative cushions (each)
- Upgraded carpet in lower deck
- Upgraded ceiling

- Upgraded salon's sofas
- Upgraded dining chairs Martha in leather
- Upgraded coffee table in saloon
- Salon window frame in saddle leather
- Bedframes + top bedside tables (master + vip) + curtains frames + tv column and top beauty (master) + top furniture on the right (vip)
- Headbed board + sofa + pouf in master cabin
- Headbed frames in vip and guest cabin
- Upgraded bar stools upholstery
- Upgraded curtains
- Cupboard tops in saddle leather
- Upgraded cockpit freestanding
- Painting n° 1 radar op.array white
- Additional chart map (Maine)
- Covers for freestanding in cockpit
- Hi-fi stereo fm/cd/dvd w/loudspeakers guest cabins (2)
- Do not install stereo fm/cd std (guest cabins)
- Day head in dinette area instead of stbd side door
- N° 2 domes painting white color
- Cockpit furniture
- Canvas package
- Exportation cost
- Flooring: teak on flybridge
- Smoke separator for generator -each- (2)
- Upgraded twin beds (sliding) in guest cabin
- Thruster: stern electric thruster 20 hp high performance (double propeller)
- Control station in the cockpit fixed with cover
- Lights: underwater light (spoiler and under master cabin) (4)
- Water intake: shore fresh water intake
- Lighting on stairs to cabins
- Salon curtains electrically-driven lifting system
- Electric lift for curtains in master cabin
- Electric lift for roll blinds (5)
- Searchlight electrically controlled (big rectangular)
- Refrigerator in Lazarette

Standard Equipment

MAIN DECK

- Access to the flybridge through GRP and teak steps, stainless steel handrail
- Accesses (2) to aft platform through GRP and teak steps, stainless steel handrail, stainless steel and plexiglass gates (2)

- Accesses (2) to the engine room (hatch and stainless steel and teak ladder in the stern bench, hatch in cockpit)
- Aft garage with lighting
- Aft handrail with side cleats (2)
- Aft tempered glass sliding door and tilting window, both with stainless steel frames
- Boat hooks (2)
- Bow hawses (2) in stainless steel
- Bow pulpit with side rails
- Bow thruster (20 HP), electric
- Bruce style anchors (50 Kg and 30 Kg) with 2 chains (mt. 100 and mt 75, 12 mm diameter)
- Cockpit chairs (4)
- Cylindrical fenders (8) and spherical fenders (2)
- Electric anchor windlasses (2 x 2700 W) with controls at bow, main helm position and flybridge helm position
- Electro-hydraulic garage hatch laid in teak on the inside
- Extendable teak cockpit table (1450-1950x850mm) with storage for
- Chairs
- External acoustic alarm for bilge water level at bow and at stern
- Foot-controlled electric windlasses (2x1500 W) in the mooring stations
- Hatches (2) to forepeak
- Ice maker in the cockpit
- Indirect lighting on side decks and at bow
- Lighting on cockpit
- Lights on sidewalks
- Living and sunbathing area at bow with sofa with underneath storages (3) and cover, GRP table and storages (2)
- Mooring line holder in the forepeak
- Mooring lines (total mt.72)
- Mooring stations (2) with GRP covers, storage space for mooring lines
- Perimetrical curtain rod for canopies (cockpit, side decks)
- Protective shades for front and side windows at bow
- Pull handles in the engine room (engine and generator shut down, ventilation fans (2) shut off, activation of fire extinguishing system)
- Roller fairleads, aft (2), bow (3)
- Sea water fire fighter hose and chain wash-down
- Shore line cable (230V mt 15)
- Shower with hot/cold fresh water (inside steps to aft platform)
- Side exit doors (2)
- Sink with hot/cold fresh water in the mooring station
- Stainless steel deck hardware
- Stainless steel mooring cleat: at stern (6), at midship (3 for each side) and at bow (3)
- Stern bench with sofa with repositionable backrest for sunbed use
- Storage space in the port support
- Storage space in the starboard support

- Sunlounge pad at bow with sunbathing cushions with 2 storages and 2 handrails
- Teak aft platform with electro-hydraulic foldaway bathing ladder
- Teak deck and cockpit flooring
- Telescopic stainless steel and teak gangway with electro-hydraulic movement, with remote controls (2) and automatic stanchions
- Watertight loudspeakers (2) in the cockpit

Saloon

- Aft sliding door and tilting window, both in tempered glass with stainless steel frames
- Air conditioning
- Apple TV
- Blu Ray DVD reader
- Bookshelf
- Cabinet with shelves
- Cooler drawer (lt. 75 24V)
- Fitted carpet and soundproof lining
- Hi-Fi system home cinema 5+1
- Indirect lighting
- Living area (leather sofas (2) and armchair, corner counter tops (2), coffee table)
- TV LED 32" or equivalent
- Venetian blinds on aft sliding door and tilting window

Dining area

- Air conditioning
- Bookshelf
- Cabinet with sliding drawer
- Ceiling lamp
- Chairs (8)
- Cupboards
- Fitted carpet and soundproof lining
- Glass partition between dining and helm with inside Venetian blind
- Roman blinds (single) on side windows
- Sliding door to the dinette
- Tempered glass, extensible dining table (size 1800-2500x900mm)
- Wooden staircase to lower deck and stainless steel handrail
- Wooden steps to flybridge

Dinette

- Air conditioning
- Cabinets with shelves
- Counter top with stools (2)
- Electrical panel

- Fitted carpet
- Side exit door
- Side windows with tilt opening (1)
- Sliding door to the galley and wooden steps
- Sofas (2) with wooden table
- Wooden and glass electric foldaway partition between dinette and galley
- Wooden steps to main helm

Galley

- Air conditioning
- Bottle drawer
- Cabinets with shelves and drawers
- Carpeted steps leading to crew area
- Ceramic cooktop
- China tableware, glasses and stainless steel cutlery, for 12
- Dishwasher
- Electric/microwave combined oven
- Extractor fan with external outlet (230V)
- Fridge (204 lt) and freezer (72 lt 230 V, 24 V through inverter)
- Overhead cabinets with shelves
- Quartz counter top
- Side windows
- Skylight
- Sliding door to dinette with wooden steps
- Stainless steel sinks (2) with hot/cold fresh water
- Vinyl wooden flooring
- Wooden and glass electric foldaway partition between galley and dinette

Main helm position

- Air conditioning
- Automatic pilot control unit
- Barometer, clock and hygrothermometer
- Cigarette lighter outlet (12V)
- Co-pilot bench
- Cordless phone
- Electro-hydraulic power steering
- Electronic controls for engine clutch and throttle with easy-dock and auto-troll functions
- Electronic digital chain counter
- Fitted carpet
- Helmsman seat
- Instant parallel battery
- Magnetic compass
- Main helm position with full instrumentation

- Monitoring integrated system with touch-screen display
- Furuno Radar, chartplotter and GPS, ecosounder function with LCD colour display and Furuno depth sounder
- Simrad VHF
- Rudder angle indicator
- Side exit door
- Side window with tilt opening
- Storage
- Synoptic switchboard with visual and
- acoustic alarms
- Telephone interface GSM/Voice/Fax
- VHF
- Windscreen wipers (2) with timer
- Wooden steps to dinette

Flybridge

- Access to the cockpit through GRP and teak steps, stainless steel handrail
- Access to the dining area through wooden steps
- Co-pilot sofa with storage
- Cover for helm position, helmsman seat, sofa and cabinet
- Detachable and directable spotlight
- Electrohydraulic davit (capacity load kg. 420) from the flybridge and garage
- Flag pole
- Fully fitted wet bar (50 lt fridge, sink, storage, countertop)
- GRP radar arch
- Life jackets (12)
- Life-buoy with floating lifeline and luminous buoy
- Liferafts for 12 people (2) (6+6)
- Lighting on the flybridge
- Navigation lights
- Plexiglass and stainless steel front and side deflector
- Saloon and cockpit stairs skylights
- Sofa with storage space underneath
- Stainless steel signal/flag mast
- Sunlounge pads (2) with sunbathing cushions and locker
- Table
- TV Antenna
- Warning horn with compressor
- Watertight loudspeakers (2)
- Flybridge helm position
- Cigarette lighter outlet (12V)
- Electro-hydraulic power steering

- Electronic controls for engine clutch and throttle with easy-dock and auto-troll functions
- Electronic digital chain counter
- Helmsman bench with storage
- Instrument panel with electric opening
- Mini Hi-Fi, watertight with USB socket radar, chartplotter repeater with LCD colour display with GPS and autopilot
- Rudder angle indicator
- Second steering position equipped with instruments and alarms
- VHF

Lower Deck

Lobby

- Access to main deck area (wooden steps and stainless steel handrail)
- Fully fitted carpet

Master cabin

- Air conditioning
- Bedside tables (2) with drawer
- Double bed with mattress, pillows and bedspread
- Drawers underneath bed
- Fitted carpet
- Hull window with side openable stainless steel portholes (2) and roll-up covers
- Indirect lighting
- Mini HiFi CD/DVD
- Mirrors
- Natural ventilation under bed
- Reading lights (2)
- Roman blinds (single) on side windows
- Sliding doors to bathroom
- TV LED 22" or equivalent
- Upholstered headboard
- Upholstered settee
- Vanity (mirror and ottoman)
- Walk-in wardrobe with hanging rail and
- Mirror Wardrobe (drawers, safe)

Master bathroom

- Air conditioning
- Cabinets with shelves and mirror doors
- Design washbasin in Corian®

- Electric ceramic WC and bidet in separate area closed by satin glass door
- Fabric Venetian blinds
- Hull window with side openable stainless steel portholes (2) and roll-up covers (3)
- Shower with glass door, wooden tray and bench
- Sliding doors to master cabin
- Sliding overhead locker with mirror door and shelf
- WC control panel with holding tank gauge (3/4 and full)
- Wooden flooring

VIP cabin

- Air conditioning
- Bedside tables (2) with drawers
- Bookshelf
- Cabinet with shelves
- Double bed with mattress, pillows and bedspread
- Drawers underneath bed
- Fully fitted carpet
- Hull window with stainless steel openable portholes (2) and roll-up cover
- Indirect lighting
- Mini HiFi with USB socket
- Mirror
- Reading lights (2)
- Roman blinds (single)
- TV outlet
- Upholstered bed headboard
- Ventilation under bed
- Wardrobe with mirror inside

VIP bathroom

- Cabinet with laundry bin
- Ceramic bidet
- Corian® counter top with integrated washbasin
- Electric ceramic WC
- Fabric Venetian blinds
- Hull window with stainless steel openable portholes (2) with roll up covers
- Shower with glass door, wooden floor and bench
- Sliding overhead locker with mirror door and shelf
- WC control panel with holding tank gauge (3/4 and full)
- Wooden flooring

Port guest cabin

- Air conditioning

- Bedside tables (2) with drawers
- Bookshelves (2)
- Double bed with mattress, pillows and bedspread
- Drawers underneath bed
- Fully fitted carpet
- Hull window with stainless steel openable portholes (2) and roll-up cover
- Indirect lighting
- Mini HiFi with USB socket
- Reading lights (2)
- Roman blinds (single)
- TV outlet
- Upholstered bed headboard
- Ventilation under bed
- Wardrobes (2), one with mirror inside

Port guest bathroom

- Cabinets with shelves and laundry bin
- Ceramic bidet
- Corian® counter top with integrated washbasin
- Electric ceramic WC
- Fabric Venetian blinds
- Overhead locker with mirror door
- Shower with glass door, wooden tray and bench
- Stainless steel openable porthole
- WC control panel with holding tank gauge (3/4 and full)
- Wooden flooring

Starboard guest cabin

- Air conditioning
- Drawers underneath bed
- Fully fitted carpet
- Hull window with stainless steel openable portholes (2) and roll-up cover
- Indirect lighting
- Mini HiFi with USB socket
- Reading lights (2)
- Roman blinds (single)
- Three-quarter size bed with mattress,
pillow and bedspread
- Upholstered bed headboard
- Ventilation under bed
- Wardrobe

Starboard guest bathroom

- Cabinet with laundry bin
- Corian® counter top with integrated
- washbasin
- Electric ceramic WC and with built-in bidet
- Fabric Venetian blinds
- Overhead locker with mirror door
- Shower with glass door and wooden tray
- Stainless steel openable porthole
- WC control panel with holding tank gauge (3/4 and full)
- Wooden flooring

Crew Area

Captain's bathroom

- Electric ceramic WC
- Overhead locker with mirror door
- Shower with plexiglass door and wooden bench
- Stainless steel openable porthole
- Washbasin
- WC control panel with holding tank gauge (3/4 and full)

Captain's cabin on port side

- Air conditioning
- Bed with mattress, pillow and bedspread
- Fully fitted carpet
- Lockers with shelves
- Overhead locker with shelf
- Reading light
- Stainless steel openable portholes (2)
- Wardrobe

Crew bathroom

Electric ceramic WC

- Lockers with shelves
- Shower
- Stainless steel openable porthole
- Washbasin
- WC control panel with holding tank gauge (3/4 and full)

Crew cabin on starboard side

- Air conditioning
- Bunk beds (2) with mattresses, pillows and bedspreads
- Drawer underneath bed
- Fully fitted carpet
- Lockers with shelves
- Overhead locker with shelves
- Reading lights (2)
- Stainless steel openable portholes (2)
- Wardrobe

Lobby in crew area

- Access to the main deck through
- carpeted steps
- Combined washer/dryer machine
- Cupboards
- Fully fitted carpet

Technical Area

Engine room

- Accesses (2) to the cockpit area (ladder in the stern bench, hatch and stainless steel and teak ladder)
- Air intakes (2) with air/water separator
- Change over valves (2) for emergency water pumping from the bilge
- Electric bilge pump
- Electric ventilation fans (2)
- FM200 fire extinguishing system with automatic/manual control
- Fresh water outlet for filling and washing
- Fuel tank level indicator
- Generator -2 Cummins 21.5 KW Hours- 534.1 Port/ 534.6 Stbd
- Generator- Upgraded
- GRP fuel tank 6750 lt with integrated settling tank and discharge
- Main electric panel
- Neon lights
- Portable lamp
- Racor diesel engine filters (2)
- Water filters (2) for engine cooling system
- Water filters (2) for generator cooling system
- Watertight fore bulkhead
- Wooden no-slip flooring

- Garage
- Electrohydraulic hatch with teak on the
- internal side
- Lighting

PROPULSION AND CONTROL

EQUIPMENT

- Propulsion and control
- Bow thruster (20 Hp)
- Electrohydraulic powered steering
- GRP fuel tank 1t 6750 with integrated settling tank and discharge
- Underwater silenced exhausts
- V-Drive transmission
- Stabilization systems
- Trim tabs (flaps)

ELECTRONIC EQUIPMENT

- Communication
- Cordless phone
- Telephone interface GSM/GPRS/FAX
- VHF (2)
- Monitoring system
- Integrated managing system with touch-screen display
- Navigation
- Automatic pilot control unit (main helm position)
- Furuno Radar, chart plotter repeater LCD display with GPS and autopilot (flybridge helm position)
- Furuno Radar, chartplotter and GPS with LCD colour display and depth sounder (2) (main helm position)

SYSTEMS

- Fire extinguishing system
- FM200 fire extinguishing system in the engine room with automatic/manual control
- Portable fire extinguishers
- Pull handles in the engine room (engine and generator shut down, ventilation fans
- (2) shut off, activation of fire extinguishing system)
- Smoke detection alarm in the engine room
- Air conditioning system
- Mediterranean air conditioning system

Electrical system

- Automatic battery charger for engine batteries 24 V
- Auxiliary generator starting battery 12 V
- Battery charger for auxiliary service batteries complete with switch to charge bow thruster 24 V
- Battery disconnecting switches: mechanical (engine room) and electronic (cockpit)
- Cathodic protection with zinc anodes
- Electric outlets 230 V throughout

- Group of auxiliary service batteries 24 V
- Group of batteries for bow thruster 24 V
- Group of batteries for the engine starting 24 V
- Inverter 24 V dc/230 V ac for galley fridge
- Inverter 24 V dc/230 V ac for services
- Isolation transformer (18,5 KVA)
- Lighting throughout 24 V
- Main generator battery 12 V
- Manual battery disconnecting switches (2) for generators
- Mechanical (cockpit) and instant (main helm position) electric battery parallel switch
- Shore plug 63 A 230 V

Bilge system

- Electric pumps (2) for bilge drainage (engine room, midship)
- Electric pumps, 3 (2 in the engine room, 1 midship)
- Emergency bilge suction pipe (engine room) through engine cooling pump
- Multipurpose electric pump (bilge, gray water, black water)
- Sanitary and water systems
- Automatic electric pump grey water discharge system
- Black water sump pump with electric automatic pump
- Black water tank (330 lt) with gauge (3/4 and full)
- Connection of crew WC to holding tank
- Electric WC system
- Fresh water autoclave pump 24 V with electronic control
- Fresh water tank 1320
- Grey water tank
- Sea water fire fighting system and chain wash-down
- Water heater 230 V 80 lt

Исключения

При продаже яхты исключаются личные вещи владельца.

Отказ от ответственности

Компания предоставляет описание судна или яхты добросовестно, но не может гарантировать точность этой информации, а также не ручается за техническое состояние. Покупатель должен проинструктировать своих агентов или оценщиков исследовать представленную информацию более подробно, по собственному желанию. Продажа судна или яхты, изменение цены или снятие с продажи будет происходить без предварительного уведомления.

ФОТОГРАФИИ

"Bella Rona" 2016 Ferretti 800 - Running



"Bella Rona" 2016 Ferretti 800 - Profile



"Bella Rona" 2016 Ferretti 800 - Profile



"Bella Rona" 2016 Ferretti 800 - Top



"Bella Rona" 2016 Ferretti 800 - Profile



"Bella Rona" 2016 Ferretti 800 - Profile



"Bella Rona" 2016 Ferretti 800 -Stern



"Bella Rona" 2016 Ferretti 800 - Top



"Bella Rona" 2016 Ferretti 800 -Bow



"Bella Rona" 2016 Ferretti 800 - Bow



"Bella Rona" 2016 Ferretti 800 - Bow



"Bella Rona" 2016 Ferretti 800 - Bow



"Bella Rona" 2016 Ferretti 800 - Flybridge



"Bella Rona" 2016 Ferretti 800 - Flybridge Helm



"Bella Rona" 2016 Ferretti 800 - Flybridge Helm



"Bella Rona" 2016 Ferretti 800 - Flybridge Seating



"Bella Rona" 2016 Ferretti 800 - Flybridge Seating



"Bella Rona" 2016 Ferretti 800 - Flybridge Seating



"Bella Rona" 2016 Ferretti 800 - Flybridge Seating



"Bella Rona" 2016 Ferretti 800 - Flybridge



"Bella Rona" 2016 Ferretti 800 - Flybridge Seating



"Bella Rona" 2016 Ferretti 800 - Flybridge / Tender



"Bella Rona" 2016 Ferretti 800

"Bella Rona" 2016 Ferretti 800 - Flybridge / Tender



"Bella Rona" 2016 Ferretti 800 - Flybridge Stairs



"Bella Rona" 2016 Ferretti 800 - Stern Seating



"Bella Rona" 2016 Ferretti 800 - Stern Seating



"Bella Rona" 2016 Ferretti 800 - Salon



"Bella Rona" 2016 Ferretti 800 - Salon

"Bella Rona" 2016 Ferretti 800 - Salon



"Bella Rona" 2016 Ferretti 800 - Salon



"Bella Rona" 2016 Ferretti 800 - Salon



"Bella Rona" 2016 Ferretti 800 - Dinning



"Bella Rona" 2016 Ferretti 800 - Dinning



"Bella Rona" 2016 Ferretti 800 - Dinning



"Bella Rona" 2016 Ferretti 800 - Galley



"Bella Rona" 2016 Ferretti 800 - Galley



"Bella Rona" 2016 Ferretti 800 - Galley



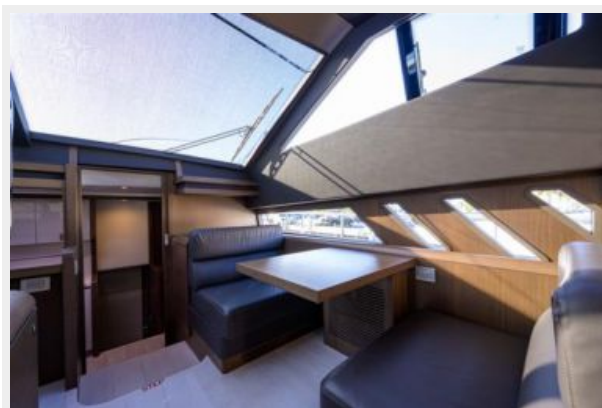
"Bella Rona" 2016 Ferretti 800 - Galley

"Bella Rona" 2016 Ferretti 800 - Galley



"Bella Rona" 2016 Ferretti 800 - Helm Station

"Bella Rona" 2016 Ferretti 800 - Helm Station



"Bella Rona" 2016 Ferretti 800 - Helm Station



"Bella Rona" 2016 Ferretti 800 -Stair Way



"Bella Rona" 2016 Ferretti 800 - Master Stateroom



"Bella Rona" 2016 Ferretti 800 - Master Stateroom



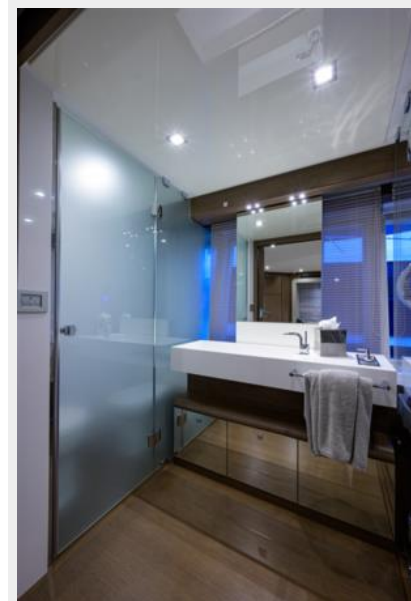
"Bella Rona" 2016 Ferretti 800 - Master Stateroom

"Bella Rona" 2016 Ferretti 800 - Master Stateroom



"Bella Rona" 2016 Ferretti 800 - Master Head

"Bella Rona" 2016 Ferretti 800 - Master Head



**"Bella Rona" 2016 Ferretti 800 -VIP
Stateroom**



**"Bella Rona" 2016 Ferretti 800 -VIP
Stateroom**



**"Bella Rona" 2016 Ferretti 800 -VIP
Stateroom**



**"Bella Rona" 2016 Ferretti 800 -VIP
Stateroom**



**"Bella Rona" 2016 Ferretti 800 -VIP
Stateroom**



"Bella Rona" 2016 Ferretti 800 - Head



"Bella Rona" 2016 Ferretti 800 - Guest Stateroom



"Bella Rona" 2016 Ferretti 800 - Laundry



"Bella Rona" 2016 Ferretti 800 - Engine Room



"Bella Rona" 2016 Ferretti 800 - Engine Room



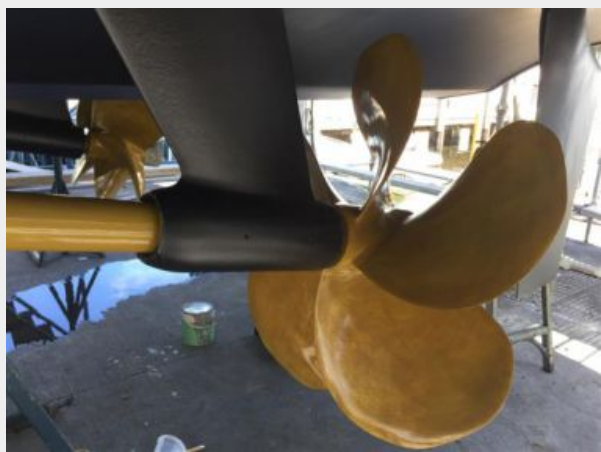
"Bella Rona" 2016 Ferretti 800 - Engine Room



"Bella Rona" 2016 Ferretti 800 - Propellers



"Bella Rona" 2016 Ferretti 800 - Propellers



"Bella Rona" 2016 Ferretti 800 - Propellers



КОНТАКТЫ

Андрей Шестаков (Andrey Shestakov) – ведущий яхтенный брокер отдела продаж яхт и судов компании Shestakov Yacht Sales Inc. Официальный представитель Shestakov Yacht Sales Inc. для русскоговорящих клиентов в центральном офисе компании в Майами/Форт Лодердейл/Флорида/США.

Контактная информация

Email: andrey@shestakovyachtsales.com

Web: shestakovyachtsales.com

Телефоны

Краснодарский край: **+7(918)465-66-44**

США, Майами, Флорида: **+1(954)274-4435**

Время работы

Понедельник – Суббота: **9:00 - 21:00**
EDT

Воскресенье: **Закрито**

Адрес



Harbour Towne Marina, 850 NE 3rd St,
STE 213, Dania, FL 33004