

## IMAGINE — HATTERAS



**Builder:** HATTERAS

**Year Built:** 2019

**Model:** Motor Yacht

**Price:** PRICE ON APPLICATION

**Location:** United States

**LOA:** 75' 0" (22.86m)

**Beam:** 21' 0" (6.40m)

**Max Draft:** 5' 3" (1.60m)

**Cruise Speed:** 21 Kts. (24 MPH)

**Max Speed:** 26 Kts. (30 MPH)

Our experienced yacht broker, Andrey Shestakov, will help you choose and buy a yacht that best suits your needs **IMAGINE — HATTERAS** from our catalogue. Presently, at Shestakov Yacht Sales Inc., we have a wide variety of yachts available on our sale's list. We also work in close contact with all the big yacht manufacturers from all over the world.

If you would like to buy a yacht **IMAGINE — HATTERAS** or would like help answering any questions concerning purchasing, selling or chartering a yacht, please call **+1(954)274-4435**

# TABLE OF CONTENTS

TABLE OF CONTENTS	2
SPECIFICATIONS	5
Basic Information	5
Dimensions	5
Speed, Capacities and Weight	5
Accommodations	5
Hull and Deck Information	5
Engine Information	6
DETAILED INFORMATION	7
75' Hatteras M75 Custom Motor Yacht IMAGINE	7
Walkthrough/Key Features	7
Exterior	8
Aft Deck	8
All Areas	8
Salon	8
Day Head	9
Galley/Dinette	9
Lower Companionway	9
All Staterooms	9
Master Stateroom and Head	10
Starboard VIP Stateroom and Head	10
Guest Bunk Stateroom - Port	10
Bow VIP Stateroom and Head	10
Flybridge	11
Electronics	11
HattCon Control Package	12
Custom Audio/Visual Equipment	12
Crew Quarters	13

Engine Room	13
Exclusions	13
Exclusions	14
Disclaimer	14
PHOTOS	15
Bow Profile	15
Port Profile	15
Stern	15
Starboard Profile	15
Foredeck	15
Windlass	15
Aft Deck Controls	16
Aft Deck	16
Aft Deck	16
Salon Seating	16
Salon Entertainment	16
Salon/Galley	16
Day Head	17
Galley	17
Dining	17
Steps to Accommodations	17
Master Stateroom - Aft	17
Master Stateroom - Aft	17
Master Stateroom - Aft	18
Master Bath	18
Master Shower	18
VIP Stateroom - Starboard	18
Guest Bunk Stateroom - Port	19
Guest Bath - Starboard	19

Washer/Dryer - Accommodations Companionway	19
Guest Bath - Starboard	19
VIP Bath - Forward	20
VIP Stateroom - Forward	20
Flybridge Deck	20
Flybridge	20
Flybridge	20
Flybridge Seats	20
Flybridge Helm	21
Flybridge Facing Aft	21
Crew Quarters	21
Engine Room	21
Engine Room	21
Engine Room	21
Engine Room	22
GA Plans	22
GA Plans	22
CONTACTS	23
Contact details	23
Telephones	23
Office hours	23
Address	23

# SPECIFICATIONS

## Basic Information

**Category:** Motor Yacht

**Sub Category:** Flybridge

**Model Year:** 2020

**Year Built:** 2019

**Country:** United States

**Fly Bridge:** Yes

## Dimensions

**LOA:** 75' 0" (22.86m)

**Beam:** 21' 0" (6.40m)

**Max Draft:** 5' 3" (1.60m)

## Speed, Capacities and Weight

**Cruise Speed:** 21 Kts. (24 MPH)

**Max Speed:** 26 Kts. (30 MPH)

**Displacement:** 155000 Pounds

**Gross Tonnage:** 128 Pounds

**Water Capacity:** 300 Gallons

**Holding Tank:** 250 Gallons

**Fuel Capacity:** 2200 Gallons

## Accommodations

**Total Cabins:** 4

**Total Heads:** 4

**Crew Cabin:** 1

## Hull and Deck Information

**Hull Material:** Fiberglass

## Engine Information

---

**Engines:** 2

**Manufacturer:** Caterpillar

**Model:** C32A

**Engine Type:** Inboard

**Fuel Type:** Diesel

---

# DETAILED INFORMATION

---

---

## 75' Hatteras M75 Custom Motor Yacht IMAGINE

---

75' Hatteras M75 Custom Motor Yacht IMAGINE

---

### Walkthrough/Key Features

---

IMAGINE is a 2020 M75 Hatteras that was built for a true yachtsman. The owner decided on Hatteras because they could build him and his family a custom yacht in a 75' platform, and offer the level of customization you can only find in a 112' yacht or larger. IMAGINE is the most extensively optioned M75 Panacera ever built. There are so many details that it must be seen in person. She is more of a 90' than any other 75' on the market. IMAGINE offers features and custom designs that are built into the M90/98 Hatteras. To list a few:

- The bridge is a complete custom arrangement with Cat 360 joystick docking
- The aft deck offers port & starboard wing stations with Cat 360 joystick docking
- The lower level staterooms are designed to offer one master and two VIP staterooms with Queen to King-size beds, and a guest bunk stateroom
- The all teak swim platform was upgraded to hydraulic, and teak stairs were added that expands to a stairwell from the fixed platform behind the bustle door to the swim platform when in the down position creating a beach club platform when lowered
- The crew quarters offer 2 staterooms with a galley and each stateroom has a porthole
- There is access to the crew quarters from the aft deck (port side) via an integrated stairwell. This was designed to allow the captain to access the engine room while underway, and not have to go through the floor hatch or the swim deck bustle door
- The stairs to the bridge are more gradually sloped to make the transition to and from the bridge easier - additionally, the steps were increased in size
- The salon and galley were both upgraded and Soundown was added under the wood floors to lower the decibel sound level while underway.
- The skylight wrapping around the galley area is equipped with "Smart Glass" which allows one to block out the sun 100% or at any level to 0%, and full controlled via HattCON

IMAGINE's audio/video system and electronics are all upgraded to the best megayacht systems offered today:

- M90/98 Hatteras offers a complete HattCON system which is also offered on IMAGINE as the first 75' Hatteras to have fully equipped integrated HattCON. There is a lot of cost associated with adding this system to Imagine, but this again is another upgraded feature that separates this vessel from any other M75 Hatteras
- Crestron complete integrated system with all zone control with 12 iPad stations, Sonos zones, 4 Apple TVs, 8 DirecTV HD receivers, KVH HD7 satellite TV system, Kaleidescape Strato 12TB Movie Player

- Electronics are all Garmin and offer 3 touch screens & the top of the line FLIR Night Vision Stabilized Thermal Camera (M400XR)
- Full GOST security systems with 8 cameras

---

## Exterior

- Teak Hydraulic Swim Platform with Ladder in Center Used to Move from Fixed Platform to Swim Platform
- Teak Stairs Integrated into Hydraulic Swim Platform
- Bow Sun Pad with Independent Raised Back Rest Positions
- Elevated Bow Sun Pad with Storage Below, Arm Rests, Cup Holders, and Recessed Trays
- (2) Reboarding Ladders on Swim Platform - Port and Starboard Sides
- Double Stainless Steel Rub Rail Around Entire Aft Side of Hydraulic Swim Platform
- (6) Each Underwater Lights - Blue and White
- Stainless 110lb. Anchor
- Dark Black Metallic Hardtop Paint Color
- Rectangular Portlights in Port and Starboard Staterooms
- Kahlenberg 12" Diameter Chrome Finish Bell
- Marquipt Carbon Fiber Sea Stairs w/ Handrails and 3" Teak Caps

---

## Aft Deck

- Teak Deck, Steps to Flybridge, and to Swim Platform Steps
- CAT 360 Wing Station - Port & Starboard with Shifters
- Bow & Stern Thruster Controls on Wing Stations
- Entry to Crew Quarters - Port Side Door - Very custom design (standard entry is off swim platform)
- Enlarged and Increased Sloped Steps to Flybridge
- Teak Drain Risers
- Additional Reinforcement to Cleats
- Docking Windlass - Port & Starboard
- Storage Under Stairwell to Flybridge
- Teak Table with Mother of Pearl Inlay

---

## All Areas

- Soundown Under Salon, Galley, Dinette, Lower Companionway Flooring
- European Walnut wood paneling throughout

---

## Salon

- Electric Salon Door
- 65" LG TV - LED - Model W8
- 24" Refrigerator - Bar - port aft corner
- Glass Storage - Above Bar
- Release Marine Cocktail Table with Walnut Frame and Faux Leather Insert
- (2) Linrose Ottomans with Storage - Grid Stitching on Top and sides with double baseball stitching
- Moorpark lounge/recliner club chair

---

## Day Head

- Calacatta Gold Countertop with 2.5" Mitered Edge

---

## Galley/Dinette

- (3) Large Atrium Windows with Smart Glass (turns from clear to dark)
- Smart Glass Control through HattCON for Atrium Windows
- Sub Zero Refrigerator
- Villeroy & Boch Flatware Set
- Luigi Bormiloi 15oz Glasses
- Juliska Le Panier Dinner and Dessert/Salad China Set
- Cambira Countertops with 2.5" Mitered edge
- Custom lunada bay outboard backsplash
- (2) sandler seating, tonon dinette chairs

---

## Lower Companionway

- Walnut-Finished Wood with Nonskid Steps to Lower Companionway
- Hallways with Wood Accents
- Satin Finish Walnut Wood Detail Along Perimeter of Floor
- Carpet Inset Between wood floor perimeter
- Satin Finish Walnut Wood Detail in Headliner
- Custom hallway layout to accommodate larger starboard stateroom layout

---

## All Staterooms

- All Recessed TVs in Staterooms
- Motion Detection Low Level Lights in All Stateroom Heads
- USB Plugs Added to All Staterooms with Outlets

---

## Master Stateroom and Head

---

- Settee/Chair to Port with Drawers
- Louvered Walnut Closet Door (same as M90)
- Jewelry Safe in Closet
- 55" LD OLED TV - more detail in AV section
- Hot Water Capacity increased
- Bianco Arpell, Calacatta Shower wall with Artistic Tile

---

## Starboard VIP Stateroom and Head

---

- Custom Stateroom Layout
- Walk Around Berth
- Custom Hanging Locker & Night Stands
- Port hull window Centered to room
- LED Rope Lighting Under Berth
- Custom Built Shower with Tile on Walls with Niches
- Custom Calacatta gold flooring
- Custom shower niche
- Custom Calacatta gold shower seat and ledges
- Custom shower flooring - Calacatta gold, honed, running bond
- Shower walls and face of shower seat polished in Calacatta gold

---

## Guest Bunk Stateroom - Port

---

- Custom Bunk Beds
- Window in Stateroom
- Reading Lights with USB Outlets
- 28" LG TV - LED

---

## Bow VIP Stateroom and Head

---

- Stateroom Door Swings Out into Hallway to create more room in stateroom
- Bedside Shelf Moved Forward 8" to Get Around Sides of Berths Easier
- Insulation Around A/C Compressor for Noise Reduction
- Samsung 32" LGD TV - LED
- Custom Built Shower with Tile on Walls with Niches
- Custom Head Flooring - Calacatta gold , polished, running bond
- Shower seat and ledges
- Custom Shower flooring - Calacatta gold
- Shower walls and face of shower seat polished in Calacatta gold

---

## Flybridge

---

- Teak Decking
- CAT 360 Joystick at Helm
- Wing Station with CAT 360 Joystick - Port
- Garmin GRID Steering Joystick on Helm Chair
- Removed standard Chaise Lounge to Create U-Shaped dinette Seating
- 6" Elevated Dinette Seating
- Forward of Port Seat Converted to Storage with Hinged Lid with Edge Detail to Match Helm Console
- 40" LG TV above Starboard Side Bar on Fixed Pivot Point Pole
- Stidd Helm Chairs
- (2) Removable armrests with (2) cupholders each in helm chairs
- Stidd Double Wide Port Riding Seat
- Anchor Chain Counter
- Painted Aluminum Framed Seacrylic door leading to aft deck
- Custom cambria bar top with straight edge
- (3) Bar stools
- Teak release marine tables with mother of pearl inlays
- Aft Deck Awning with Removable Stainless Steel Poles
- Stainless Steel Poles Fit into Turn Buckle Style Inserts like the M90
- Sail Shade Pole Storage in Backrest of Outboard U-Shaped Seating with Hinged/removable Cover
- Kenyon Grill
- (2) Viking 8-Man Rescue Pro Life Rafts with Canisters, Hydrostatic releases, and iso-i equipment packs
- (2) Fabricated life raft Cradles, Recessed into the Flybridge Railing

---

## Electronics

---

- FLIR Night Vision - M400XR Stabilized Thermal Camera
- (3) Garmin GPSMAP 8617
- Garmin GSD-24 Network Sounder
- Garmin B260 Transducer
- Garmin Reactor 40 Steer-by-Wire
- Garmin 12kW Open Array with 6' Antenna
- Garmin Hub, Cabling, N2K Connectors
- (2) Garmin GC 10 Marine Cameras
- Garmin AIS 800
- Garmin GXM53 XM Satellite Antenna
- Garmin gWind Marine Wind Sensor
- KVH HD7 Sat TV System
- (8) HVH Direct TV Receivers

- KVH V7 Dome
- Backup CAT MPDS for Each Engine Mounted Under Flybridge Helm Console
- Dual Kahlenberg d-330 Air Horns with m/512 Signal Controller
- Trim Tab Switch with Rocker Switches with Indicator Lights
- EPIRB ACR Global Fixi iPro CAT - 406 MHZ GPS
- (2) Icom IC-M506 Radio
- (2) ACR 100LED Remote Controlled Searchlight

---

## HattCon Control Package

---

- Lighting Controls
- HVAC Controls
- Electric Blinds
- Smart Glass Control in Galley
- Additional Windlass Chain Counter Controls
- (8) Each PTZ Cameras
- Flir Camera
- Watermaker/Spot Zero Combo Unit Controls
- Controls for Cameras on TVs - Salon TV, & Master TV
- Video Quad Display of Camera Video on Helm Screens
- Iphone/Ipad App with Camera Video Streaming

---

## Custom Audio/Visual Equipment

---

- Full Crestron integrated AV system with all zone control, central music and movie
- Storage, bluetooth, WiFi, and iPad remotes and Sonos
- XM on the Crestron
- TV Displayed on Garmins
- (4) Apple TV Streaming Devices
- (8) Sonos Connect Streaming Devices
- (2) Samsung Blu-Ray Players
- (12) Apple iPad Mini and Charging Stations
- (13) Crestron DM-NVX-351 Digital Media Encoder/Decoder
- (24) KEF Interior Speakers
- (6) Bowers and Wilkins Marine 8 Exterior Speakers
- (2) JL Audio M770 Exterior Speakers
- (4) Fusion 6"Marine Exterior Speakers
- JL Audio Exterior Subwoofer
- (2) Niles Interior Subwoofer
- Crestron 10" Touchscreen
- Crestron Pro3 3-Series Control System
- (2) Audio Control Power Amplifier

- UPS Backup for all TVs, A/V, and SAT Equipment so they do not power off when switching between shore and gen power

---

## Crew Quarters

---

- Additional Crew Stateroom to Starboard
- Custom Port Captain Stateroom with a queen berth
- LG 28" TV in Staterooms
- Storage Drawers in Companionway
- Inside drawers to be metal for tool box style drawers
- Pull Out Drawer Seat with Hinged Backrest
- Wide Crew Companionway stairs to bustle door - made into a convertible seat
- Pull Drawer Refrigerator/Freezer Drawers
- Microwave
- 20" TV in Main Area

---

## Engine Room

---

- T-Caterpillar C-32A Engines at 1600hp each (with 258 hours as of 2/2020)
- CAT 5 Year Platinum Warranty until June 2024
- EIAPP Certificates for CAT Engines
- Twin Caterpillar 27kW Generators (with 220 hours as of 2/2020)
- Generator 5 Year Platinum Warranty until June 2024
- Dometic Water Maker 1800 GPD with Spot zero (2000 GPD)
- Hydraulic Stern Thruster
- Storage Racks Above Engines
- Hydraulic Zero Speed Stabilizers
- Backup Pressure Water Pump - 240VAC and 24VAC
- Ventilation Fans
- Triple Racor Fuel Transfer Fuel Polishing System from Main Tanks to day tanks
- AC in engine room
- Second fire suppression system - forward port corner
- GP link for engines
- Additional backup raw water AC pump for interior AC units
- Backup raw water pump flybridge AC pump
- Second fuel sender connected to an analog gauge
- Pressure gauge on triple racor filters for fuel transferring polishing system
- Black Water Flexible Hoses Accessible and Replaceable
- Accessible Connection between PVC and Flexible Hose

---

## Exclusions

---

- Lighted IMAGINE sign on the transom (Name reserved)
- IMAGINE bell on the foredeck

## Exclusions

---

Owner's personal belongings.

## Disclaimer

---

The Company offers the details of this vessel or yacht in good faith but cannot guarantee or warrant the accuracy of this information nor warrant the condition of the vessel. A buyer should instruct his representatives, agents, or his surveyors, to investigate such details as the buyer desires validated. This vessel or yacht is offered subject to prior sale, price change, or withdrawal without notice.

# PHOTOS

**Bow Profile**



**Port Profile**



**Starboard Profile**



**Stern**



**Foredeck**



**Windlass**



**Aft Deck**



**Aft Deck Controls**



**Aft Deck**



**Salon Seating**



**Salon Entertainment**



**Salon/Galley**



**Day Head**



**Galley**



**Dining**



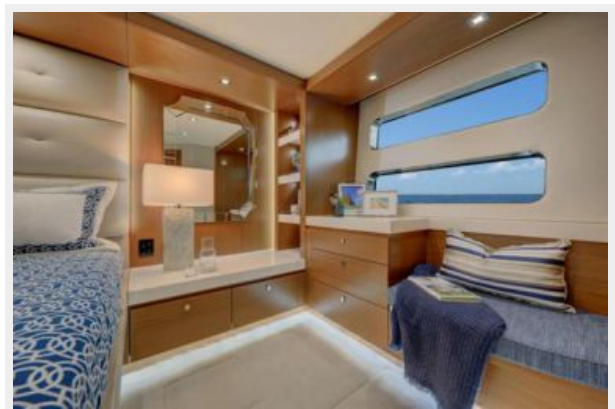
**Steps to Accommodations**



**Master Stateroom - Aft**



**Master Stateroom - Aft**



**Master Stateroom - Aft**



**Master Bath**



**Master Shower**



**VIP Stateroom - Starboard**



**Guest Bunk Stateroom - Port**



**Guest Bath - Starboard**



**Washer/Dryer - Accommodations  
Companionway**

**Guest Bath - Starboard**



**VIP Stateroom - Forward**



**VIP Bath - Forward**



**Flybridge Deck**



**Flybridge**



**Flybridge**



**Flybridge Seats**



**Flybridge Helm**



**Flybridge Facing Aft**



**Crew Quarters**



**Engine Room**



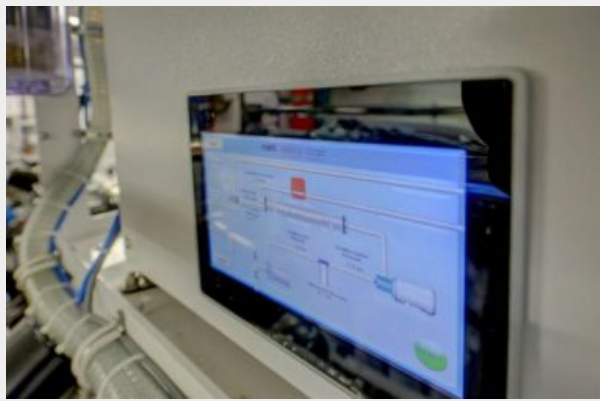
**Engine Room**



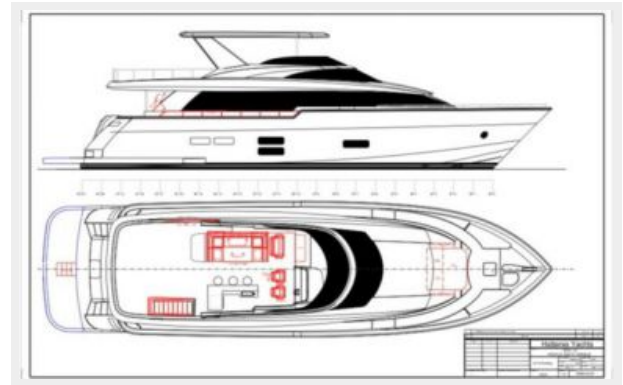
**Engine Room**



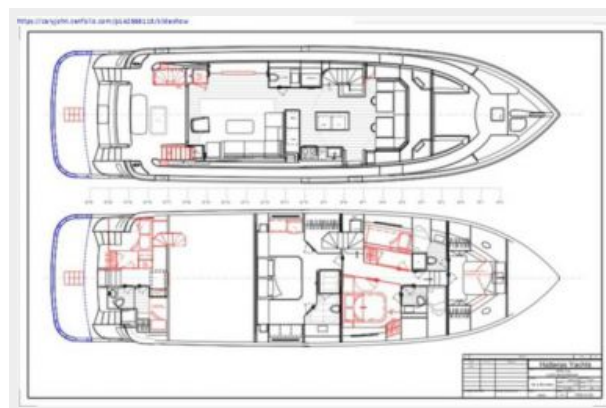
## Engine Room



## GA Plans



## GA Plans



# CONTACTS

---

Andrey Shestakov, leading yacht broker of the sales department of Shestakov Yacht Sales Inc. Shestakov Yacht Sales Inc., the official representative of the Miami/Fort Lauderdale FL headquarters.

## Contact details

---

Email:  
**andrey@shestakovyachtsales.com**

Web: [shestakovyachtsales.com/en/](http://shestakovyachtsales.com/en/)

## Telephones

---

USA: **+1(954)274-4435**

## Office hours

---

Monday – Saturday: **9:00 - 21:00 EDT**

Sunday: **closed**

## Address

---



Harbour Towne Marina, 850 NE 3rd St,  
STE 213, Dania, FL 33004