

NO NAME — SEA RAY



Builder: SEA RAY

Year Built: 2003

Model: Cruising Yacht

Price: PRICE ON APPLICATION

Location: United States

LOA: 36' 0" (10.97m)

Beam: 12' 6" (3.81m)

Min Draft: 3' 1" (0.94m)

Max Draft: 3' 1" (0.94m)

Our experienced yacht broker, Andrey Shestakov, will help you choose and buy a yacht that best suits your needs **NO NAME — SEA RAY** from our catalogue. Presently, at Shestakov Yacht Sales Inc., we have a wide variety of yachts available on our sale's list. We also work in close contact with all the big yacht manufacturers from all over the world.

If you would like to buy a yacht **NO NAME — SEA RAY** or would like help answering any questions concerning purchasing, selling or chartering a yacht, please call **+1(954)274-4435**

TABLE OF CONTENTS

TABLE OF CONTENTS	2
SPECIFICATIONS	5
Overview	5
Basic Information	5
Dimensions	5
Speed, Capacities and Weight	6
Accommodations	6
Hull and Deck Information	6
Engine Information	6
DETAILED INFORMATION	7
Key Features & Upgrades	7
Exclusions	7
Disclaimer	7
PHOTOS	8
A1	8
A1A	8
A1B	8
A1C	8
A2A	8
A2B	8
A2C	9
A2D	9
A3	9
A3A	9
A5	10
A4A	10
A5B	10
A5A	10

A6	10
A6A	10
A8	11
A7	11
A9	11
A9A	11
B	11
B1A	11
B3A	12
B3	12
B4	12
B3B	12
B4B	13
B4A	13
B4C	13
B4D	13
B6	14
B6A	14
B6B	14
B6C	14
B7	15
B6D	15
B8	15
B9	15
B9A	16
B9B	16
C1	16
C2	16
C3	17

C4	17
C5	17
C6	17
CONTACTS	18
Contact details	18
Telephones	18
Office hours	18
Address	18

SPECIFICATIONS

Overview

NEW TO MARKET JULY 2020 -- Professionally Maintained 2003 36' Sea Ray Sundancer -- Fresh Water Vessel For Most of Her Life -- Currently Lift Kept / Indoor Stored When Not in Use

Powered w/ Twin Inboard 8.1L Mercuisers -- 650 Original Hours. 7.5kW Kohler Generator has 130 Original Hours

Loaded with Upgrades: Bow Thruster (Added 2018), AfterMarket Fresh Water Flush System, SeaDek Flooring in Cockpit + Swim Platform, FlatScreen TV's Throughout + Much More!!

Basic Information

Category: Cruising Yacht

Sub Category: Cabin Cruiser

Model Year: 2003

Year Built: 2003

Country: United States

Vessel Top: Bimini Top

Cockpit: Yes

Dimensions

LOA: 36' 0" (10.97m)

Beam: 12' 6" (3.81m)

Min Draft: 3' 1" (0.94m)

Max Draft: 3' 1" (0.94m)

Speed, Capacities and Weight

Displacement: 18500 Pounds

Water Capacity: 55 Gallons

Holding Tank: 35 Gallons

Fuel Capacity: 250 Gallons

Accommodations

Total Cabins: 2

Total Heads: 1

Hull and Deck Information

Hull Material: Fiberglass

Hull Color: White

Engine Information

Engines: 2

Manufacturer: Mercruiser

Model: 8.1L S Horizon

Engine Type: Inboard

Fuel Type: Gas

DETAILED INFORMATION

Key Features & Upgrades

- **2003 36' Sea Ray Sundancer -- Fresh Water Vessel for Most of Her Life (Until 2 Years Ago)**
- **Lift Kept / Indoor Stored When Not in Use**
- **Professionally Maintained -- Serviced & Detailed Monthly**
- **Fresh Bottom Paint (10/2018)**
- **New Bow Thruster (2018)**
- **Twin 8.1L Mercruiser Horizons w/ 640 Hours**
- **Kohler 7.5 kW Generator w/ 117 Hours**
- **New SeaDeck Flooring - Cockpit & Swim Platform**
- **New FlatScreen TV's (2019) - Cockpit & Salon**
- **Power Inverter System**
- **After Market Fresh Water Flush System**
- **Standard Horizon CP300 Chartplotter / GPS**
- **Standard Horizon Explorer VHF Radio**
- **Mercury SmartCraft Diagnostics on Helm**
- **Cockpit Refrigerator**
- **Clarion Stereo System**
- **After Market Flooring in Salon**

Exclusions

Owner's personal belongings.

Disclaimer

The Company offers the details of this vessel or yacht in good faith but cannot guarantee or warrant the accuracy of this information nor warrant the condition of the vessel. A buyer should instruct his representatives, agents, or his surveyors, to investigate such details as the buyer desires validated. This vessel or yacht is offered subject to prior sale, price change, or withdrawal without notice.

PHOTOS

A1



A1A



A1B



A1C



A2A



A2B



A2C



A2D



A3



A3A



A4A



A5



A5B



A5A



A6



A6A



A7



A8



A9



A9A



B



B1A



B3



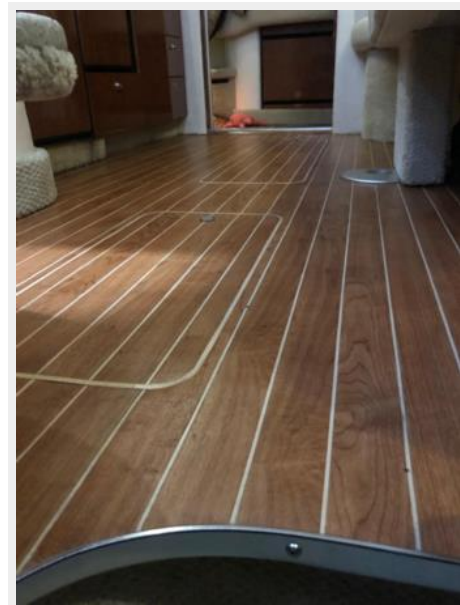
B3A



B3B



B4



B4A



B4B



B4C



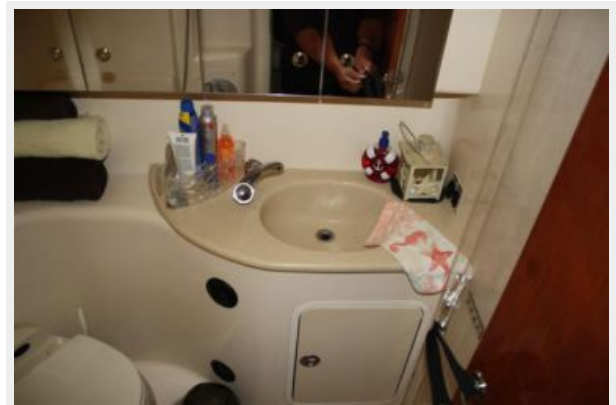
B4D



B6



B6A



B6B



B6C



B6D



B7



B8



B9



B9A



B9B



C1



C2



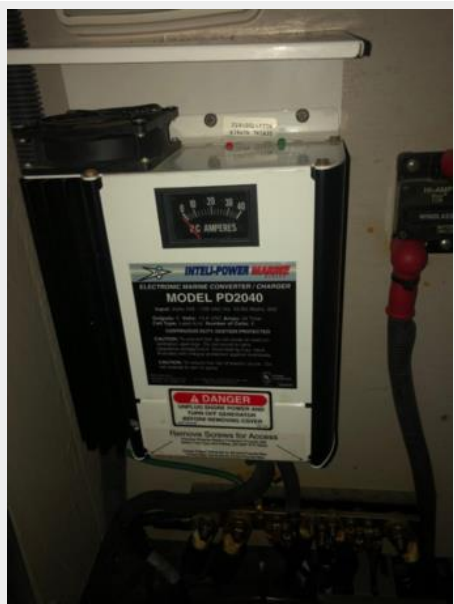
C3



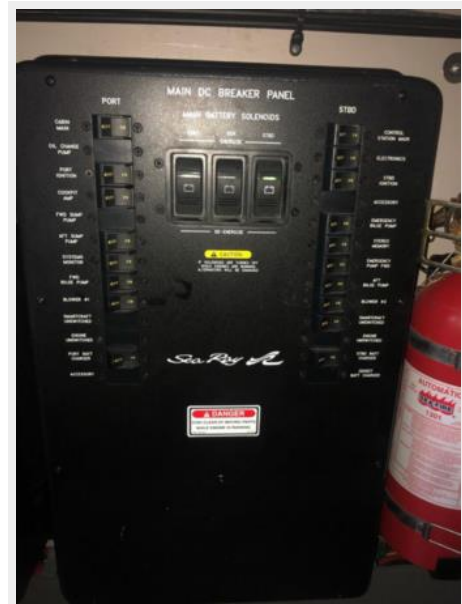
C4



C5



C6



CONTACTS

Andrey Shestakov, leading yacht broker of the sales department of Shestakov Yacht Sales Inc. Shestakov Yacht Sales Inc., the official representative of the Miami/Fort Lauderdale FL headquarters.

Contact details

Email: andrey@shestakovyachtsales.com

Web: shestakovyachtsales.com/en/

Telephones

USA: +1(954)274-4435

Office hours

Monday – Saturday: **9:00 - 21:00** EDT

Sunday: **closed**

Address



Harbour Towne Marina, 850 NE 3rd St,
STE 213, Dania, FL 33004