

ATLANTIDA BCN — ISLAND GYPSY



Builder: ISLAND GYPSY

Year Built: 1980

Model: Trawler Yacht

Price: PRICE ON APPLICATION

Location: Spain

LOA: 36' 0" (10.97m)

Beam: 12' 6" (3.81m)

Min Draft: 3' 11" (1.19m)

Max Draft: 0' 0" (0.00m)

Cruise Speed: 9 Kts. (10 MPH)

Max Speed: 11 Kts. (13 MPH)

Our experienced yacht broker, Andrey Shestakov, will help you choose and buy a yacht that best suits your needs **ATLANTIDA BCN — ISLAND GYPSY** from our catalogue. Presently, at Shestakov Yacht Sales Inc., we have a wide variety of yachts available on our sale's list. We also work in close contact with all the big yacht manufacturers from all over the world.

If you would like to buy a yacht **ATLANTIDA BCN — ISLAND GYPSY** or would like help answering any questions concerning purchasing, selling or chartering a yacht, please call **+1(954)274-4435**

TABLE OF CONTENTS

TABLE OF CONTENTS	2
SPECIFICATIONS	5
Overview	5
Basic Information	5
Dimensions	5
Speed, Capacities and Weight	6
Accommodations	6
Hull and Deck Information	6
Engine Information	6
DETAILED INFORMATION	7
SPECIFICATION	7
Exclusions	7
Disclaimer	7
PHOTOS	8
Island Gypsy 36 Exterior	8
Island Gypsy Profile	8
Island Gypsy 36 Exterior	8
Island Gypsy 36 Exterior	8
Island Gypsy 36 Exterior	9
Island Gypsy 36 Exterior	9
Island Gypsy 36 Exterior	9
Island Gypsy 36 Exterior	9
Island Gypsy 36 Exterior	9
Island Gypsy 36 Exterior	9
Island Gypsy 36 Exterior	10
Island Gypsy 36 Exterior	10
Island Gypsy 36 Exterior	10
Island Gypsy 36 Exterior	10

Island Gypsy 36 Exterior	10
Island Gypsy Interior	10
Island Gypsy Interior	11
Island Gypsy Interior	11
Island Gypsy Interior	11
Island Gypsy Interior	11
Island Gypsy Interior	12
Island Gypsy Interior	12
Island Gypsy Interior	12
Island Gypsy Interior	12
Island Gypsy Interior	13
Island Gypsy Interior	13
Island Gypsy Interior	13
Island Gypsy Interior	13
Island Gypsy Interior	14
Island Gypsy Interior	14
Island Gypsy Interior	14
Island Gypsy Interior	14
Island Gypsy Interior	14
Island Gypsy Interior	15
Island Gypsy Interior	15
Island Gypsy Interior	15
Island Gypsy Interior	15
Island Gypsy Interior	16
Island Gypsy Interior	16
CONTACTS	17
Contact details	17
Telephones	17
Office hours	17
Address	17

SPECIFICATIONS

Overview

Atlantida Bcn is a fantastic trawler Island Gypsy 36. She was built in 1980 and has been meticulously cared for and maintained over time by its only two owners.

Among the latest refits we highlight:

- Complete refit of the interiors- Restoration and varnishing of teak- Complete exterior painting- Tuning of engines and systems

Basic Information

Category: Trawler Yacht

Model Year: 36

Year Built: 1980

Refit Year: 2018

Country: Spain

Vessel Top: Bimini Top

Fly Bridge: Yes

Cockpit: Yes

Dimensions

LOA: 36' 0" (10.97m)

LWL: 0' 0" (0.00m)

LOD: 32' 10" (10.01m)

Beam: 12' 6" (3.81m)

Min Draft: 3' 11" (1.19m)

Max Draft: 0' 0" (0.00m)

Clearance: 0' 0" (0.00m)

MFG Length: 0' 0" (0.00m)

Speed, Capacities and Weight

Cruise Speed: 9 Kts. (10 MPH)

Max Speed: 11 Kts. (13 MPH)

Displacement: 23368999.772 Pounds

Water Capacity: 198.129039 Gallons

Fuel Capacity: 449.0924884 Gallons

Accommodations

Total Cabins: 2

Total Berths: 5

Sleeps: 5

Total Heads: 1

Hull and Deck Information

Hull Material: Wood

Hull Configuration: Other

Hull Color: GREY

Engine Information

Engines: 2

Manufacturer: Ford

Model: TEMPEST

Fuel Type: Diesel

DETAILED INFORMATION

SPECIFICATION

ACCOMODATION:

5 Guests in 2 Cabins

REFITS AND UPDATES:

- Generator KHOLER 9 KW (2017)- Air Conditioning: Two CLIMMA 3500 BTU units and one 9000 BTU unit (2016)- RAYMARINE Autopilot (2015)- RAYMARINE Multifunction Display (2015)- Plotter (2015)- Probe (2015)- Radar (2015)- Electrical Installation (2016)- Electric panel (2016)- Interior and exterior led lighting (2016)- Battery charger (2015)- Electric water heater (2015)- W.C. Electric TECMA (2016)- Shafts and Propellers (2015)- Machine room insulation with 0.5mm aluminium sheet (2016)- Bathing platform (2015)- Window panes (2016)- Cockpit ice cooler (2015)- Cockpit shower (2016)

-

Exclusions

Owner's personal belongings.

Disclaimer

The Company offers the details of this vessel or yacht in good faith but cannot guarantee or warrant the accuracy of this information nor warrant the condition of the vessel. A buyer should instruct his representatives, agents, or his surveyors, to investigate such details as the buyer desires validated. This vessel or yacht is offered subject to prior sale, price change, or withdrawal without notice.

PHOTOS

Island Gypsy Profile



Island Gypsy 36 Exterior



Island Gypsy 36 Exterior



Island Gypsy 36 Exterior



Island Gypsy 36 Exterior



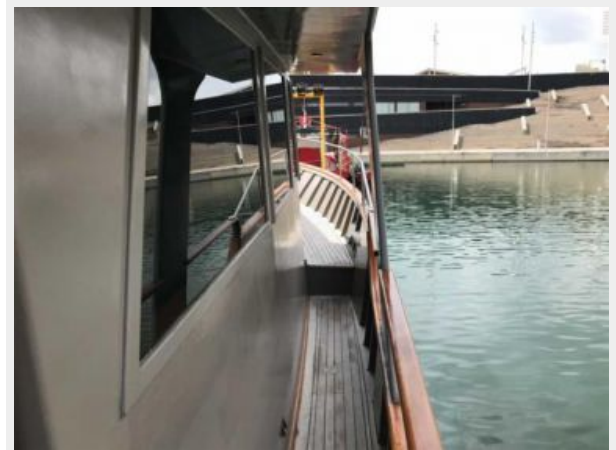
Island Gypsy 36 Exterior



Island Gypsy 36 Exterior



Island Gypsy 36 Exterior



Island Gypsy 36 Exterior



Island Gypsy 36 Exterior



Island Gypsy 36 Exterior



Island Gypsy 36 Exterior



Island Gypsy 36 Exterior



Island Gypsy 36 Exterior



Island Gypsy 36 Exterior



Island Gypsy Interior



Island Gypsy Interior



Island Gypsy Interior



Island Gypsy Interior



Island Gypsy Interior



Island Gypsy Interior



Island Gypsy Interior



Island Gypsy Interior



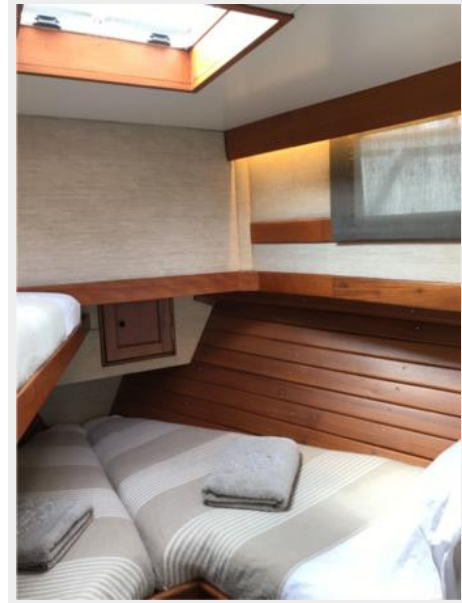
Island Gypsy Interior



Island Gypsy Interior



Island Gypsy Interior



Island Gypsy Interior



Island Gypsy Interior



Island Gypsy Interior



Island Gypsy Interior



Island Gypsy Interior



Island Gypsy Interior



Island Gypsy Interior



Island Gypsy Interior



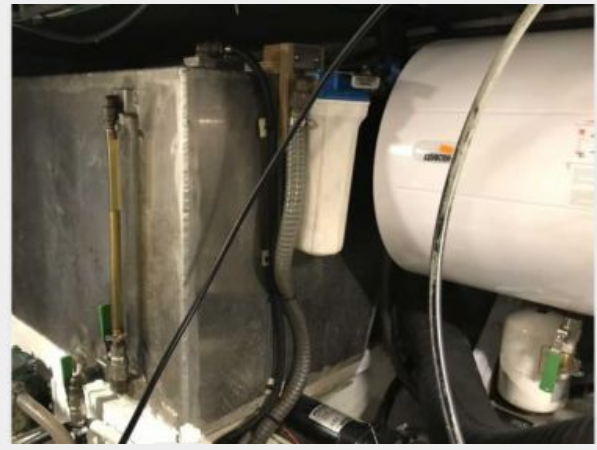
Island Gypsy Interior



Island Gypsy Interior



Island Gypsy Interior



Island Gypsy Interior



CONTACTS

Andrey Shestakov, leading yacht broker of the sales department of Shestakov Yacht Sales Inc. Shestakov Yacht Sales Inc., the official representative of the Miami/Fort Lauderdale FL headquarters.

Contact details

Email: andrey@shestakovyachtsales.com

Web: shestakovyachtsales.com/en/

Telephones

USA: +1(954)274-4435

Office hours

Monday – Saturday: **9:00 - 21:00** EDT

Sunday: **closed**

Address



Harbour Towne Marina, 850 NE 3rd St,
STE 213, Dania, FL 33004